
National Mining Association

Weekly Statistical Summary

September 28, 2007 Edition
(Data for Week Ending September 22, 2007)

Prepared by
National Mining Association



Suite 500 East, 101 Constitution Avenue, NW
Washington, DC, 20001
Phone (202) 463-2600
Visit us at <http://www.nma.org>

NMA Weekly Statistical Summary

Vol. 45, No. 38
Dated 09/28/07

PRODUCTION, CONSUMPTION & TRADE						
	Week Ended			Cumulative Jan 1 to		
	09/22/07	09/23/06	% Chng	09/22/07	09/23/06	% Chng
EIA Coal Production (000 Tons):						
Week Ended/Year to Date	22,370	21,846	2.4%	833,391	847,398	-1.7%
52 Weeks Ended	1,147,077	1,151,331	-0.4%			
Month Ended -- August						
	August 07/06		% Chng	Jan - August 07/06		% Chng
	101,462	100,644	0.8%	763,335	777,128	-1.8%
MONTH ENDED AND CUMULATIVE NUMBERS ARE PRELIMINARY AND SUBJECT TO CHANGE						
DOC Bituminous Coal Trade (000 Tons)						
Exports:	July 07/06			Jan - July 07/06		
			% Chng			% Chng
Metallurgical	3,247	1,483	118.9%	17,889	15,204	17.7%
Steam	2,532	1,847	37.1%	13,525	11,182	21.0%
Imports:	3,373	3,181	6.0%	20,564	20,095	2.3%
EEI Electric Output (Mil. Kwh)						
	Week Ended			Cumulative Jan 1 to		
	09/22/07	09/23/06	% Chng	09/22/07	09/23/06	% Chng
EEI Electric Output (Mil. Kwh)	79,130	76,523	3.4%	3,036,007	2,962,121	2.5%
AISI Raw Steel Output (000 Tons)	2,101	2,147	-2.1%	77,269	81,338	-5.0%
EIA U.S. PETROLEUM DATA						
4-Week Averages 000 Barrels per Day						
PETROLEUM SUPPLY:						
	Week Ending			Cumulative Daily Averages		
	09/21/07	09/21/06	% Chng	2007	2006	% Chng
Domestic Crude	5,054	5,179	-2.4	5,170	5,110	1.2
Net Imports (Incl. SPR)	9,987	10,636	-6.1	10,026	10,126	-1.0
SPR Stocks W/D or Added	-81	0	--	-15	-13	--
Other Stocks W/D or added	465	-34	--	-46	-32	--
Natural Gas Liquids Prod.	2,321	2,401	-3.3	2,363	2,209	7.0



NMA

THE AMERICAN RESOURCE

National Mining Association Web Site: [http:// www.nma.org](http://www.nma.org)

EIA Estimated Weekly U.S. Coal Production Overview (Thousand Short Tons)

Coal-Producing Region and State	Week Ended			Year To Date		Percent Change	52 Weeks Ended		
	9/22/2007	9/15/2007	9/23/2006	9/22/2007	9/22/2006		9/22/2007	9/23/2006	Percent Change
Alabama	397	399	340	14,320	14,175	1.0	19,165	19,402	-1.2
Alaska	27	27	24	1,113	1,011	10.1	1,527	1,344	13.6
Arizona	153	154	160	5,850	5,987	-2.3	8,079	9,000	-10.2
Arkansas	1	1	s	44	13	231.1	54	14	277.7
Colorado	758	762	708	26,953	25,888	4.1	37,313	35,525	5.0
Illinois	639	643	635	25,817	23,670	9.1	34,850	31,675	10.0
Indiana	705	709	656	26,018	25,428	2.3	35,688	34,818	2.5
Kansas	9	9	9	327	271	20.7	482	312	54.6
Kentucky Total	2,295	2,308	2,230	85,154	90,019	-5.4	116,212	122,016	-4.8
Eastern	1,722	1,732	1,731	64,233	70,168	-8.5	87,894	94,921	-7.4
Western	573	576	499	20,921	19,851	5.4	28,318	27,095	4.5
Louisiana	47	77	70	2,103	2,910	-27.7	3,300	4,037	-18.3
Maryland	103	103	116	2,345	4,256	-44.9	3,143	5,591	-43.8
Mississippi	87	34	81	2,668	2,819	-5.4	3,637	3,782	-3.8
Missouri	6	6	3	187	313	-40.3	268	492	-45.5
Montana	799	804	808	29,358	29,975	-2.1	41,108	40,777	0.8
New Mexico	499	502	474	18,797	18,489	1.7	26,212	26,293	-0.3
North Dakota	521	524	599	20,638	21,804	-5.3	29,245	30,194	-3.1
Ohio	474	476	422	16,168	16,658	-2.9	22,217	23,336	-4.8
Oklahoma	40	40	36	1,307	1,508	-13.3	1,797	2,023	-11.2
Pennsylvania Total	1,214	1,221	1,161	48,329	48,736	-0.8	65,752	67,368	-2.4
Anthracite	27	27	30	1,112	1,136	-2.1	1,514	1,629	-7.1
Bituminous	1,187	1,194	1,131	47,216	47,600	-0.8	64,238	65,739	-2.3
Tennessee	56	56	53	1,990	2,088	-4.7	2,706	2,918	-7.3
Texas	911	916	932	30,760	33,269	-7.5	42,918	46,520	-7.7
Utah	461	464	439	17,857	18,743	-4.7	25,121	25,333	-0.8
Virginia	570	573	555	21,006	22,077	-4.9	28,780	29,187	-1.4
Washington	0	0	51	0	2,106	-100.0	473	3,320	-85.8
West Virginia Total	2,932	2,948	2,772	113,086	112,635	0.4	152,733	153,097	-0.2
Northern	908	913	728	33,433	31,791	5.2	44,019	43,379	1.5
Southern	2,024	2,035	2,044	79,654	80,844	-1.5	108,714	109,718	-0.9
Wyoming	8,667	8,516	8,510	321,198	322,550	-0.4	444,299	432,959	2.6
Appalachian Total	7,468	7,510	7,151	281,476	290,793	-3.2	382,389	395,819	-3.4
Interior Total	3,018	3,011	2,922	110,152	110,053	0.1	151,311	150,767	0.4
Western Total	11,885	11,752	11,773	441,763	446,553	-1.1	613,376	604,744	1.4
East of Miss. River	9,472	9,472	9,022	356,900	362,561	-1.6	484,882	493,188	-1.7
West of Miss. River	12,899	12,800	12,824	476,491	484,837	-1.7	662,195	658,142	0.6
Bituminous and Lignite	22,343	22,245	21,817	832,279	846,262	-1.7	1,145,563	1,149,702	-0.4
Anthracite	27	27	30	1,112	1,136	-2.1	1,514	1,629	-7.1
U.S. Total	22,370	22,272	21,846	833,391	847,398	-1.7	1,147,077	1,151,331	-0.4
Railroad Cars Loaded	147,434	146,299	142,511	5,380,725	5,444,890	-1.2	7,391,192	7,354,321	0.5

Source: Energy Information Administration



WEEKLY ELECTRIC OUTPUT

Essential Energy Information from EEI's Statistics Department

Volume 75 No. 38

OUTPUT FOR WEEK ENDED - Sep 22, 2007

Sep 26, 2007

The net available amount of electric energy distributed by the Total Electric Utility Industry+ for the week ended Saturday, **Sep 22, 2007** was **79,130** gigawatthours (GWh), according to the Edison Electric Institute. This is equivalent to **175** on the weekly electric output index.

WEEKLY ELECTRIC OUTPUT BY GEOGRAPHIC DIVISION

(48 CONTIGUOUS STATES)

	Week Ended September 22		52 Weeks Ended September 22	
	GWh Output	% Increase Over Corresponding Week of 2006	GWh Output	% Increase Over Corresponding Period of 2006
New England	2,402	-2.4	133,034	0.0
Mid-Atlantic	8,235	0.0	452,399	1.2
Central Industrial	13,595	8.7	715,406	2.3
West Central	6,720	6.6	349,491	1.3
Southeast	21,318	1.5	1,095,485	1.9
South Central	12,645	2.3	593,492	-0.8
Rocky Mountain	5,585	13.1	272,488	5.4
Pacific Northwest	2,698	4.4	157,131	3.9
Pacific Southwest	5,932	-3.1	293,826	0.6
Total United States	79,130	3.4	4,062,753	1.6

WEEKLY ELECTRIC OUTPUT IN PREVIOUS WEEKS--GWh

Week Ended	2007	Week Ended	2006	% Inc. (07/06)	52 Weeks Ended	2007	% Inc. (07/06)
Sep 01	90,365	Sep 02	84,076	7.5	Sep 01	4,045,478	0.8
Sep 08	88,495	Sep 09	78,027	13.4	Sep 08	4,055,947	1.1
Sep 15	81,556	Sep 16	77,357	5.4	Sep 15	4,060,145	1.4
Sep 22	79,130	Sep 23	76,523	3.4	Sep 22	4,062,753	1.6
Sep 22	3,036,007	Sep 23	2,962,121	2.5	YEAR TO DATE, FIRST 38 WEEKS		

WEEKLY ELECTRIC OUTPUT INDEX--TOTAL U.S.*

SEASONALLY ADJUSTED 1982 = 100

Week Ended	2007	Week Ended	2006	Week Ended	2005
Sep 01	183	Sep 02	171	Sep 03	181
Sep 08	188	Sep 09	167	Sep 10	160
Sep 15	175	Sep 16	168	Sep 17	189
Sep 22	175	Sep 23	172	Sep 24	196

* Excludes Alaska and Hawaii

+ Includes investor-owned companies, cooperatives and government-owned utilities.

Copyright © 2007 Edison Electric Institute. All rights reserved.

WEEKLY ELECTRIC OUTPUT BY GEOGRAPHIC DIVISION (48 CONTIGUOUS STATES)

	Week Ended			NMA CUMULATIVE JANUARY 1 to			52 Weeks Ended		
	22-Sep	23-Sep	% Increase Over Corresponding Week of 2006	22-Sep	23-Sep	% Increase Over Corresponding Week of 2006	22-Sep	23-Sep	% Increase Over Corresponding Week of 2006
	2007	2006		2007	2006		2007	2006	
	GWh	GWh		GWh	GWh		GWh	GWh	
	Output	Output		Output	Output		Output	Output	
New England	2,402	2,462	-2.4%	99,149	97,939	1.2%	133,034	133,018	0.0%
Mid-Atlantic	8,235	8,239	0.0%	339,610	330,961	2.6%	452,399	446,848	1.2%
Central Industrial	13,595	12,509	8.7%	533,584	513,066	4.0%	715,406	699,367	2.3%
West Central	6,720	6,301	6.6%	261,565	256,224	2.1%	349,491	345,040	1.3%
Southeast	21,318	21,001	1.5%	818,479	795,085	2.9%	1,095,485	1,074,732	1.9%
South Central	12,645	12,366	2.3%	448,518	453,396	-1.1%	593,492	598,499	-0.8%
Rocky Mountain	5,585	4,938	13.1%	203,017	191,151	6.2%	272,488	258,484	5.4%
Pacific Northwest	2,698	2,586	4.3%	113,205	107,448	5.4%	157,131	151,247	3.9%
Pacific Southwest	<u>5,932</u>	<u>6,121</u>	-3.1%	<u>218,878</u>	<u>216,854</u>	0.9%	<u>293,826</u>	<u>291,973</u>	0.6%
Total United States *	79,130	76,523	3.4%	3,036,005	2,962,124	2.5%	4,062,752	3,999,208	1.6%

Notes: EEI output data are an estimate of electricity load made available for distribution derived as weekly net generation + purchases from non-utilities + net imports - exports - sales for resale. It is not meant to be a measure of electricity generation for the U.S. EEI survey data represent the majority of national distribution (large utilities, large government power projects, some independent and large municipal power projects). The remaining segment of the industry (smaller producers) is estimated. Non-utility generation is captured via direct sales to utilities.

* Excludes Alaska and Hawaii

** Less than one-tenth of one percent

SOURCE: Edison Electric Institute (EEI), *Weekly Electric Output Report*.

AMERICAN IRON AND STEEL INSTITUTE
 1140 Connecticut Avenue, Suite 705
 Washington, D.C. 20036

September 24, 2007

ESTIMATED WEEKLY RAW STEEL* PRODUCTION

<u>Period</u>	<u>Thousand Net Tons</u>	<u>Percent</u>		<u>Production by District</u>		
		<u>Change from Previous Period</u>	<u>Percent Capability Utilization**</u>	<u>Week Ending</u>		
				<u>Sep 22</u>	<u>Sep 15</u>	
<u>Week Ending</u>				North East Coast	149	148
				Pgh/Youngstown	196	203
				Lake Erie	112	120
Sept 22, 2007	2,101	0.6	88.8	Detroit	120	125
Sept 22, 2006	2,147	-2.1	91.2	Indiana/Chicago	549	571
Sept 15, 2007	2,088	-0.1	88.2	Midwest	255	249
<u>Year-to-Date+</u>				Southern	634	583
				Western	<u>86</u>	<u>89</u>
Sept 22, 2007	77,269	-5.0	85.5	Total	2101	2088
Sept 22, 2006	81,338	-	90.1			

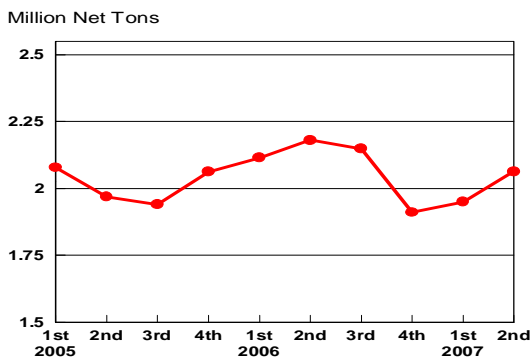
*Raw steel production tonnage included in this report is estimated based on a sampling of steel producers. Therefore, this report should be used primarily to assess production trends. The AISI production report "AIS 7," produced monthly and available by subscription, provides a more accurate summary of steel production based on data supplied by companies representing approximately 75% of U.S. production capacity.

+Includes revisions for previous months

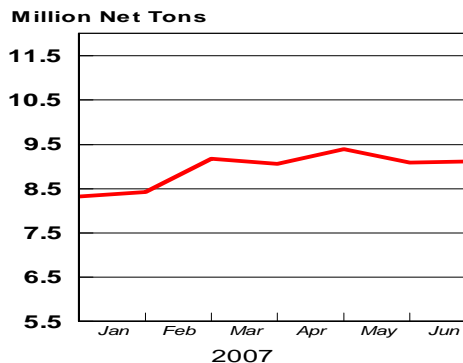
NOTE: Capability for the First Quarter 2007 is approximately 31.2 million net tons vs 30.5 million net tons for the same period last year, and 30.7 million tons for the fourth quarter of 2006.

Capability -	2003 approx.	2004	2005	2006	2007
	2.3 million tons/week	2.2	2.3	2.4	2.4

Average Weekly Raw Steel Production

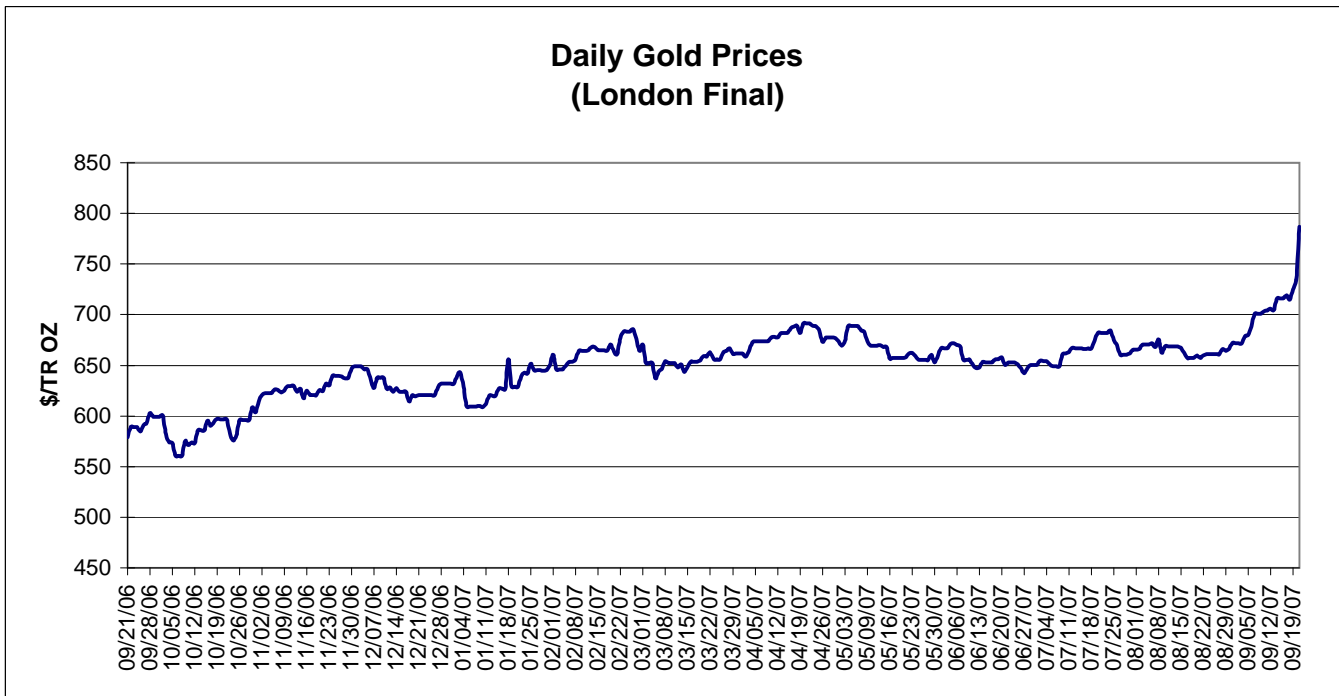
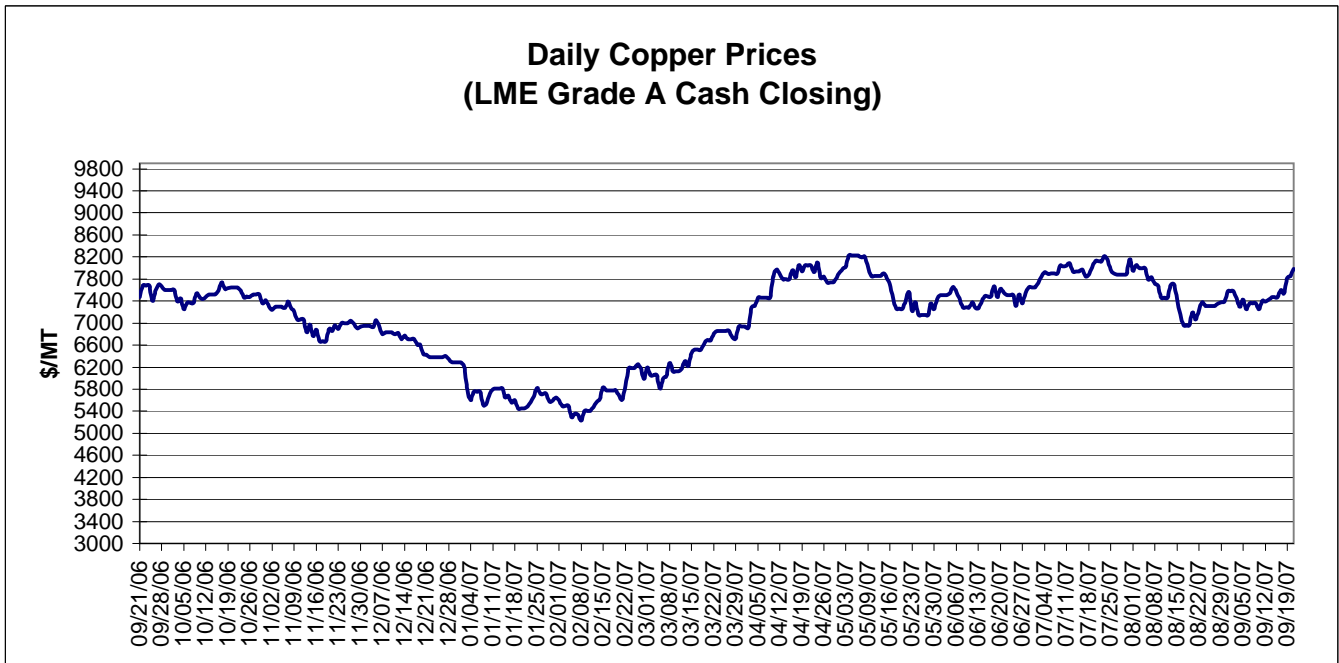


MONTHLY RAW STEEL PRODUCTION



*Steel in the first solid state after melting suitable for further processing or sale, including ingots, steel for castings and strand or pressure cast blooms, slabs, or other product forms.

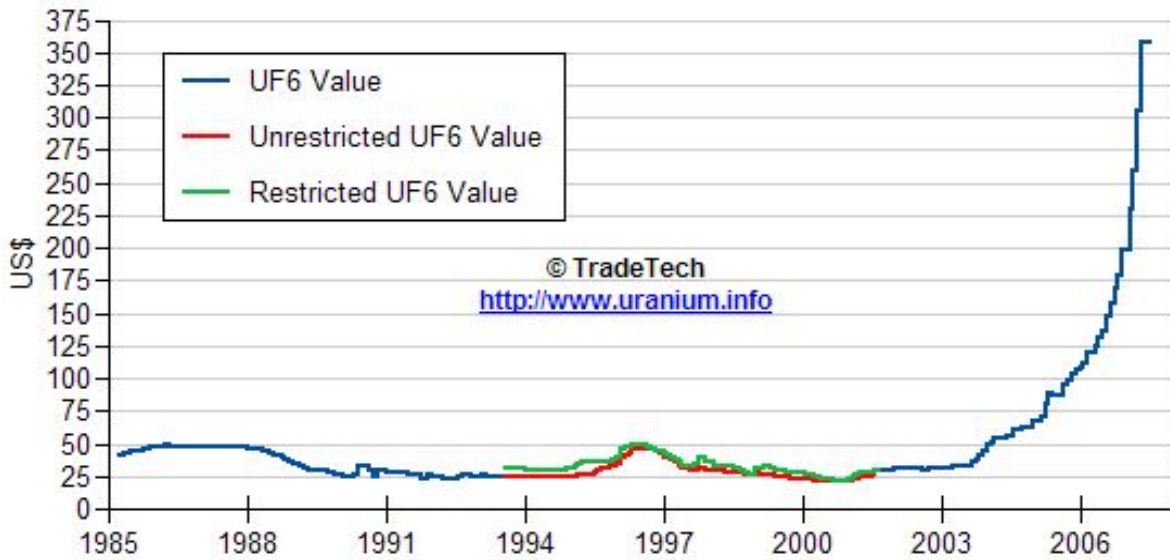
** Based on tonnage capability to produce raw steel for a sustained full order book.



Data reflect closings on weekends and holidays.

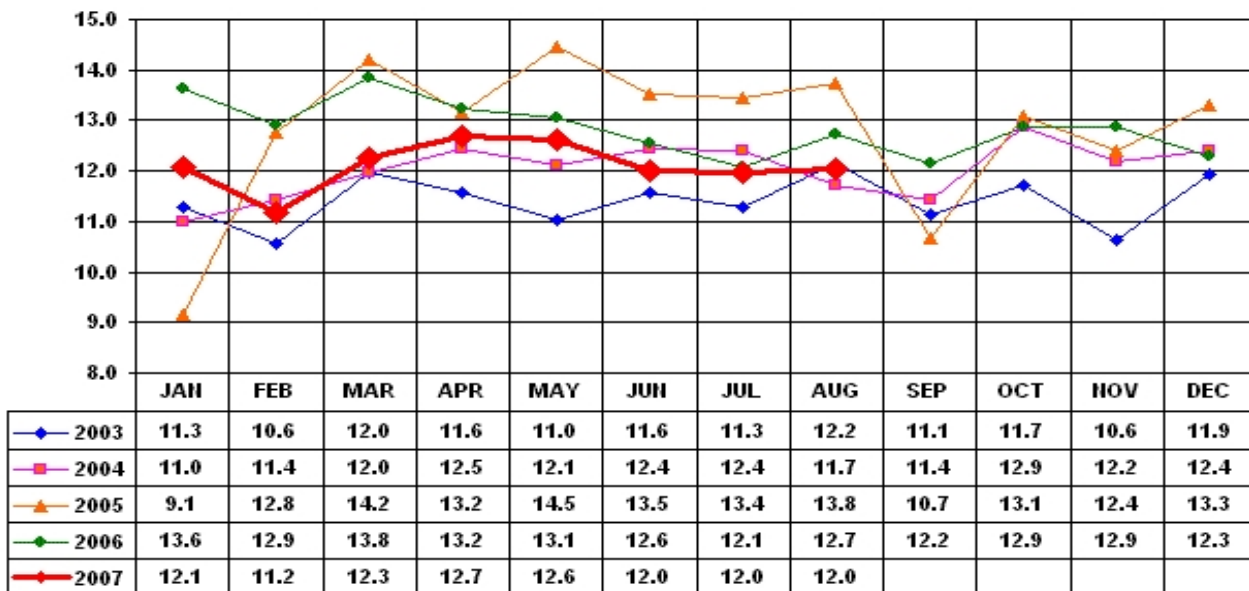
Source: Platts Metals Week

Trade Tech's Uranium (UF6) Monthly Spot Prices (US\$/kg as UF6)



Source: Trade Tech, Uranium Info Website – <http://www.uranium.info>

Coal and Coke Monthly Tonnage Indicator for Internal U.S. Waterways



Source: U.S. Army Corps of engineers, Waterborne Commerce Statistics Center