

NATIONAL MINING ASSOCIATION

2001 COAL PRODUCER SURVEY

May 2002

2001 COAL PRODUCER SURVEY

May 2002

Prepared by:
Leslie L. Coleman
(202) 463-9780
E-mail: lcoleman@nma.org

**NATIONAL MINING ASSOCIATION
101 Constitution Avenue, NW *
Suite 500 East
Washington, D.C. 20001
(202) 463-2600
www.nma.org**

* New address effective June 24, 2002

THE NATIONAL MINING ASSOCIATION 2001 COAL PRODUCER SURVEY

May 2002

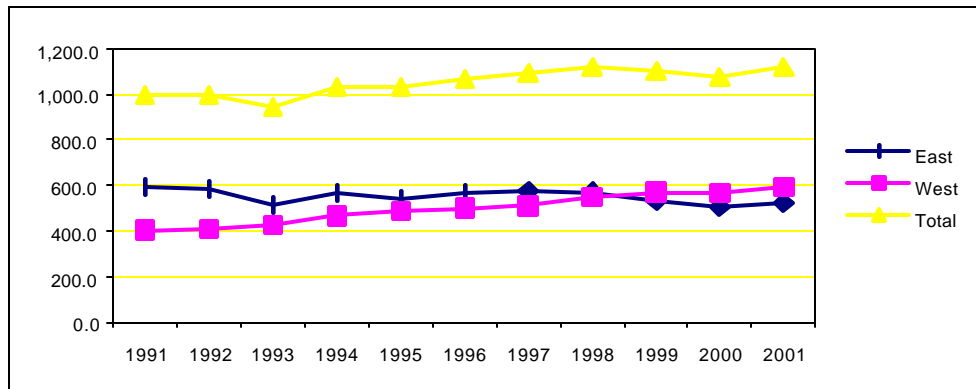
The Coal Industry In 2001

Coal production in 2001 rose to an all-time high of 1,121.3 million short tons, a one-year increase of 47.7 million tons, or 4.5 percent, according to the Energy Information Administration's preliminary production estimate (Table 1). It was the fifth year of increase in a nine-year period characterized by a general, but fluctuating rise, of 175.9 million tons, or 18.6 percent. A key Factor cited by analysts as influencing 2001 was ongoing demand in the electric-power sector, which has driven the general rise. Production has exceeded 1 billion tons for eight consecutive years.

Of last year's output, Eastern production was 46.9 percent (595.6 million tons) and Western production was 53.1 percent (595.6 million tons). Increases were reported both East (18.2 million tons) and West (29.6 million tons) of the Mississippi River (Figure 1). The production increases came primarily from mines in Wyoming and Colorado in the West; and from mines in Pennsylvania, West Virginia, Kentucky and Indiana in the East.

Figure 1

U.S. Coal Production
1991 - 2001
(Million Short Tons)



In assessing 2001, government and producer analysts alike identified the rebuilding of stockpiles in the electric-power sector as a primary factor behind the increase in coal production – the need to replenish supplies driven to very low levels by high demand for power-generation in the year 2000.

Nevertheless, companion EIA surveys of the electric-power sector report that in 2001 generation required an estimated 994.4 million tons of coal, slightly more than in 2000; and 41.9 million tons more than in 1999, a two-year increase of 19.8 percent (See EIA *Monthly Energy Review*, April 2002, Table 7.6).

Producer analysts said 2001 production was influenced by a series of interrelated factors that included:

- Cooler weather than normal in the winter months of the first quarter;
- Continuing strength in the economy into the second quarter;
- Higher natural gas prices that made coal by far the most economic power fuel for much of the year;
- The approach of the static nuclear power fleet to a maximum level of capacity utilization;
- The ongoing rise in capacity utilization in coal-based generation;
- A regulation-driven tendency to blend (or substitute) lower-Btu Western coal from the Powder River Basin with Eastern coal, which can mean rising consumption to maintain equivalent output;
- And, some additional mine capacity from new mines, and the re-opening of older mines.

Seen as subsequent restraints on production were moderating gas prices and weather-related factors in the last half of the year.

Last year, coal generated 51 percent of the power supply. Consumer-producer stockpiles were estimated to be 140 million tons at the end of 2000, up 22 percent from the level of 171 million tons in 2001.

Coal industry productivity, as measured in tons per miner per hour, has more than doubled since 1985 (Table 7), and continues to increase. The general trend throughout the industry continues to be toward larger companies and larger more efficient mines. In addition, coal mining technology continues to evolve. Larger haul trucks, shovels and draglines have increased productivity significantly since the mid 1980's. Expansion of output at the highly productive large surface mines in the West, and the greater use of eastern longwall and continuous mining methods, and closure of less productive mines, also are key factors in productivity gains. Today, the U.S. coal industry is recognized as one of the safest, most productive, and technologically advanced in the world.

Coal Industry Sales and Consolidation Activity

Sales and consolidation activities continued in 2001. Westmoreland Mining LLC, a wholly owned subsidiary of Westmoreland Coal Company, purchased Montana Power Company's Western Energy Company and Northwestern Resources Company coal business units in April 2001. Westmoreland Coal Company then purchased Knife River Corporation's (MDU Resources Group, Inc.) North Dakota and Montana coal operations in May 2001.

In June 2001, American Electric Power's Southwestern Electric Power Company (SWEPCO) subsidiary assumed the mine assets of the Dolet Hills Mining Venture mine as a result of a litigation settlement involving the mine, SWEPCO, and Cleco Corporation. The mine, now known as the Dolet Hills Lignite Mine, mines the lignite coal used by the Dolet Hills Power Station. American Electric Power provides overall direction and support to the mining operations.

American Electric Power (AEP) sold its affiliate coal mining companies in Ohio and West Virginia in July 2001 to CONSOL Energy Inc. AEP then acquired most of the coal assets of Quaker Coal in October 2001 through resolution of Quaker Coal Company bankruptcy proceedings.

Australia's BHP Ltd., owner of four mines in New Mexico, merged with Britain's Billiton Plc., forming BHP Billiton in June 2001.

The Major Coal Producing Companies in 2001

In 2001, Peabody Energy Corporation again was the largest coal producer in the United States with output (including sales) of 194.4 million short tons, 17.3 percent of total U.S. coal production. The second largest was Arch Coal, Inc. with 118.4 million tons, 10.6 percent of total U.S. coal production. The third was Kennecott Energy Company with 117.5 million tons, 10.5 percent of U.S. production, and the fourth largest coal producer, CONSOL Energy Inc., had output of 73.7 million tons, 6.6 percent of U.S. production. The fifth largest producer was RAG American Coal Holding, Inc. with 65.6 million tons, and 5.8 percent of production. The top ten coal producing companies listed in this survey account for approximately 68 percent of total U.S. production, up slightly from 66 percent in 2000.

Table 2, compiled by National Mining Association (NMA) from data supplied through its recent survey of the major coal producers, shows 2001 production for 45 coal producing companies in the United States. Foreign coal production (production outside the U.S.) was only reported this year by three of the coal companies surveyed (CONSOL, Drummond, and ExxonMobil) and was not included in the tables in this report.

The Major U.S. Coal Mines and Mining Complexes in 2001 (Tables 3 - 5)

According to the 2002 survey, the top four underground mines in terms of production were the Bailey Mine and the Enlow Fork Mine in Pennsylvania (both CONSOL Energy Inc.), Twentymile Mine in Colorado (The RAG American Coal Holding Company, Inc.), and the SUFCO Mine in Utah (Arch Coal, Inc.). The four top producing surface mines in 2001 were the North Antelope/Rochelle Mine (Peabody Energy), Black Thunder Mine (Arch Coal, Inc.), the Cordero-Rojo Mine (Kennecott Energy Company), and the Jacobs Ranch Mine (Kennecott Energy Company), all located in Wyoming's Powder River Basin coal region. A list of major underground and surface operations is found in Tables 3 and 4. Table 5 shows the 2001 output of major multi-mine production complexes. Kennecott Energy's Cordero-Rojo complex was the largest multi-mine complex with 43.5 million tons, second was Peabody Energy's Arizona Operating Unit (13.1 million tons). Arch Coal, Inc.'s Mingo Logan complex was third with 6.4 million tons, and Massey Energy's Sidney complex was fourth (6.2 million tons).

Major U.S. Coal Reserve Holders in 2001 (Table 6)

The U.S. government holds the most coal reserves, with approximately 91.7 billion short tons of estimated recoverable coal reserves. The figure is based on the Department of Interior's U.S. Bureau of Land Management's estimation that the Federal government holds about one-third ownership of the nation's coal resources. Great Northern Limited Partnership reported the second largest reserve holding with 20 billion tons. Third, was Peabody Energy with 9.1 billion tons. Fourth and fifth was CONSOL Energy Inc., and Arch Coal, Inc. with 4.4 billion tons and 3.4 billion tons, respectively. Table 6 ranks the top holders of U.S. coal reserves.

Survey Methodology

Coal producers are asked to provide their company's total U.S. coal production and sales tonnage, foreign production (not included in Table 2), and reserve holdings for the calendar year past, in this case, 2001. They also are asked to name their mines and output using the following criteria: surface mines, production of 2 million tons or greater; underground mines, production of 1 million tons or greater; and any multi-mine production complex with output of more than 1 million tons. A multi-mine production complex is defined as a facility that is not a single mine, but one that processes production from more than one mine. Every effort was made to include as many coal producers as possible, whether or not a National Mining Association (NMA) member. A total of 49 coal companies were surveyed for their production and/or reserves, of which all 49 responded. A copy of the survey form is appended to this report. Individual survey responses are kept confidential.

Notes: The production figures reported in this survey reflect ownership of mine production as of the end of calendar year 2001. Companies not included in the list are encouraged to submit data for next year. The National Mining Association has conducted a survey of major coal producers since the 1980's. The results of prior surveys can be found in earlier editions of NMA's *Coal Producer Survey* and *Coal Data* publications, and prior to 1998, in NMA *Facts About Coal* publications and Intertec Publishing's *Keystone Coal Industry Manual* editions. Last year's Coal Producer Survey (2000 data) is available in PDF format on the NMA web site - www.nma.org

TABLE 1

U.S. Coal Production by State, 1993 - 2001
(Thousand Short Tons)

State	1993	1994	1995	1996	1997	1998	1999	2000 r/	2001 p/
East:									
Alabama	24,768	23,266	24,640	24,637	24,468	23,013	19,504	19,324	19,174
Illinois	41,098	52,797	48,180	46,656	41,159	39,732	40,417	33,444	33,784
Indiana	29,295	30,927	26,007	29,670	35,497	36,803	34,004	27,965	37,073
Kentucky	156,299	161,642	153,739	152,425	155,853	150,295	139,626	130,688	132,601
Eastern	120,191	124,447	118,541	116,951	120,918	116,654	110,043	104,901	107,245
Western	36,108	37,195	35,198	35,474	34,936	33,641	29,583	25,787	25,356
Maryland	3,355	3,632	3,667	4,093	4,160	4,060	3,837	4,546	4,596
Mississippi	0	0	0	0	0	0	18	902	604
Ohio	28,816	29,897	26,118	28,572	29,154	28,048	22,480	22,269	25,327
Pennsylvania	59,700	62,237	61,576	67,942	76,198	81,036	76,399	74,619	76,399
Bituminous	55,394	57,616	56,893	63,190	71,520	75,805	71,646	70,046	72,542
Anthracite	4,306	4,621	4,682	4,751	4,678	5,231	4,753	4,572	3,857
Tennessee	3,047	2,987	3,221	3,651	3,300	2,696	3,037	2,669	3,324
Virginia	39,317	37,129	34,099	35,590	35,837	33,747	32,294	32,834	32,469
West Virginia	<u>130,525</u>	<u>161,776</u>	<u>162,997</u>	<u>170,433</u>	<u>173,743</u>	<u>171,145</u>	<u>157,978</u>	<u>158,257</u>	<u>160,377</u>
Total East	516,220	566,289	544,246	563,668	579,369	570,575	529,594	507,516	525,728
West:									
Alaska	1,601	1,567	1,698	1,481	1,450	1,344	1,565	1,641	1,514
Arizona	12,173	13,056	11,947	10,442	11,723	11,315	11,787	13,111	13,418
Arkansas	44	51	28	21	18	24	22	12	14
California	0	0	0	0	0	0	0	0	0
Colorado	21,886	25,304	25,710	24,886	27,449	29,631	29,989	29,137	33,372
Iowa	175	46	0	0	0	0	0	0	0
Kansas	341	284	285	232	360	341	409	201	176
Louisiana	3,134	3,463	3,719	3,221	3,545	3,216	2,953	3,699	3,647
Missouri	653	838	548	710	401	372	392	436	366
Montana	35,917	41,640	39,451	37,891	41,005	42,840	41,102	38,352	39,143
New Mexico	28,268	28,041	26,813	24,067	27,025	28,597	29,156	27,323	29,614
North Dakota	31,973	32,286	30,112	29,861	29,580	29,912	31,135	31,270	30,475
Oklahoma	1,758	1,911	1,876	1,701	1,621	1,661	1,661	1,588	1,635
Texas	54,567	52,346	52,684	55,164	53,328	52,583	53,072	49,498	45,040
Utah	21,847	24,399	25,167	27,507	26,683	26,075	26,373	26,656	26,966
Washington	4,739	4,893	4,868	4,565	4,495	4,638	4,101	4,270	4,624
Wyoming	<u>210,129</u>	<u>237,092</u>	<u>263,822</u>	<u>278,440</u>	<u>281,881</u>	<u>314,409</u>	<u>337,119</u>	<u>338,900</u>	<u>365,595</u>
Total West	429,205	467,217	488,728	500,188	510,563	546,958	570,836	566,094	595,599
Appalachian	409,718	445,370	434,861	451,868	467,778	460,400	425,573	419,419	428,910
Interior	167,174	179,858	168,526	172,848	170,863	168,374	162,530	143,531	147,697
Western	368,532	408,276	429,587	439,140	451,291	488,762	512,328	510,661	544,720
Grand Total	945,425	1,033,504	1,032,974	1,063,856	1,089,932	1,117,535	1,100,431	1,073,612	1,121,328

Note: Data include mines producing less than 10,000 short tons/year.
r/ Revised. p/ Coal Production for 2001 is preliminary.

Source: U.S. Department of Energy/Energy Information Administration

TABLE 2

**Major U.S. Coal Producers - 2001
(Million Short Tons)**

Company	Production Tonnage	Percent of Total U.S.
1. Peabody Energy Corporation ¹	194.4	17.3%
2. Arch Coal, Inc. ²	118.4	10.6%
3. Kennecott Energy Company ³	117.5	10.5%
4. CONSOL Energy Inc.	73.7	6.6%
5. RAG American Coal Holding, Inc.	65.5	5.8%
6. AEI Resources, Inc. (Addington Enterprises, Inc.)	45.6	4.1%
7. Massey Energy Company	45.0	4.0%
8. Triton Coal Company, LLC	43.0	3.8%
9. The North American Coal Corporation	31.3	2.8%
10. Westmoreland Coal Company	27.8	2.5%
11. TXU Mining (Texas Utilities)	22.8	2.0%
12. The Pittsburg & Midway Coal Mining Company	16.0	1.4%
13. BHP Billiton	15.8	1.4%
14. Alliance Resource Partners	15.7	1.4%
15. Kiewit Mining Group, Inc. ⁴	15.1	1.3%
16. James River Coal Company	13.1	1.2%
17. Interwest Mining Company (Sub. Of PacifiCorp)	11.3	1.0%
18. Lodestar Energy, Inc.	10.4	0.9%
19. TECO Coal Corporation	10.1	0.9%
20. Pittston Coal Company	9.4	0.8%
21. Coastal Coal Company, LLC	9.3	0.8%
22. Andalex Resources, Inc.	7.1	0.6%
23. American Coal Company (Murray Energy Corp.)	6.8	0.6%
24. American Electric Power Service Corp. (AEP) ⁵	6.8	0.6%
25. Jim Walter Resources, Inc.	5.8	0.5%
26. Aluminum Company of America (ALCOA Inc.)	5.7	0.5%
27. U.S. Steel Mining Company LLC	4.8	0.4%
28. AMVEST Minerals Company LLC	4.6	0.4%
29. The Ohio Valley Coal Company (Murray Energy Corp.)	4.6	0.4%
30. Drummond Company, Inc.	4.1	0.4%
31. Anker Coal Group, Inc.	4.0	0.4%
32. Oxford Mining Co.	3.6	0.3%
33. Western Fuels Association, Inc.	3.6	0.3%
34. Black Hills Corp.	3.5	0.3%
35. ExxonMobil Coal and Minerals Company	3.2	0.3%
36. Dolet Hills Lignite Co. (Sub. of AEP)	2.8	0.2%
37. KenAmerican Resources, Inc. (Murray Energy Corp.)	2.3	0.2%
38. Maple Creek Mining, Inc. (Murray Energy Corp.)	2.3	0.2%
39. Trapper Mining Inc.	1.9	0.2%
40. Usibelli Coal Mine, Inc.	1.5	0.1%
41. PennAmerican Coal LP (Murray Energy Corp.)	1.2	0.1%
42. Sun Coke Company	1.0	0.1%
43. Energy Resources, Inc. (Murray Energy Corp.)	0.8	0.1%
44. Cravat Coal Company	0.7	0.1%
45. Pacific Coast Coal Company ⁶	0.0	0.0%
Other Producers	<u>127.4</u>	<u>11.4%</u>
Total U.S. Production	1,121.3	100.0%

Notes: Figures are rounded. 2001 data compiled from 2002 NMA survey of major producers. May not be all-inclusive. Any companies not included in this listing are invited to submit data for the next edition. U.S. production total for 2001 is an EIA preliminary estimate.

¹ Peabody Energy Corp. production figure includes production plus sales tonnage.

² Arch Coal production figure includes 100% interest in Canyon Fuels (65% ownership).

³ Kennecott Energy production figure includes 50% ownership (tonnage) of Decker Mine.

⁴ Kiewit production figure includes 100% ownership (tonnage) of Decker, Black Butte, and Walnut Creek mine tonnage.

⁵ AEP production figure includes tonnage from Quaker Coal Company, excludes Dolet Hills Lignite Co.

⁶ Production tonnage under a half million (.003 million tons)

TABLE 3**Major U.S. Underground Coal Mines - 2001
(Million Short Tons)**

	Mine Name	Location	Tonnage	Operating Company
1.	Bailey	Pennsylvania	10.3	CONSOL Energy Inc.
2.	Enlow Fork	Pennsylvania	10.3	CONSOL Energy Inc.
3.	Twentymile	Colorado	7.7	Twentymile Coal Company
4.	SUFCO ¹	Utah	7.0	Canyon Fuel Company
5.	Galatia	Illinois	6.8	The American Coal Co.
6.	Cumberland	Pennsylvania	6.7	RAG Cumberland Resources LP
7.	Emerald	Pennsylvania	6.7	RAG Emerald Resources LP
8.	McElroy	West Virginia	6.6	CONSOL Energy Inc.
9.	Baker	Kentucky	6.3	Lodestar Energy, Inc.
10.	Bowie No. 2	Colorado	5.4	Bowie Resources, Ltd.
11.	Mountaineer	West Virginia	5.3	Arch Coal, Inc.
12.	Blacksville	West Virginia	5.0	CONSOL Energy Inc.
13.	Federal No. 2	West Virginia	5.0	Peabody Energy Subsidiary
14.	West Elk	Wyoming	5.0	Arch Coal, Inc.
15.	Robinson Run	West Virginia	4.9	CONSOL Energy Inc.
16.	Dilworth	Pennsylvania	4.7	CONSOL Energy Inc.
17.	Dotiki	Kentucky	4.6	Webster County Coal LLC
18.	Powhatan No. 6	Ohio	4.6	The Ohio Valley Coal Co.
19.	Buchanan	Virginia	4.4	CONSOL Energy Inc.
20.	Deer Creek	Utah	4.3	Energy West Mining Co.
21.	Shoal Creek	Alabama	4.1	Drummond Company, Inc.
22.	Shoemaker	West Virginia	4.1	CONSOL Energy Inc.
23.	Crandall Canyon	Utah	4.0	Genwal Resources, Inc.
24.	Harris No. 1	West Virginia	3.8	Peabody Energy Subsidiary
25.	Skyline ¹	Utah	3.8	Canyon Fuel Company
26.	Camp No. 11	Kentucky	3.5	Peabody Energy Subsidiary
27.	Justice	West Virginia	3.5	Independence Coal Co.
28.	North River	Alabama	3.4	Pittsburg & Midway Coal Mining Co.
29.	Monterey No. 1	Illinois	3.2	Monterey Coal Co.
30.	U.S. Steel No. 50	West Virginia	3.0	U.S. Steel Mining Co.
31.	Upper Big Branch	West Virginia	3.0	Performance Coal Co.
32.	Mettiki	Maryland	2.7	Mettiki Coal LLC
33.	Randolph Mine 11	Illinois	2.6	Old Ben Coal Co.
34.	Big Mountain No. 16	West Virginia	2.5	Peabody Energy Subsidiary
35.	No. 4	Alabama	2.5	Jim Walter Resources
36.	Maple Creek	Pennsylvania	2.3	Maple Creek Mining, Inc.
37.	Paradise	Kentucky	2.3	KenAmerican Resources, Inc.
38.	West Ridge	Utah	2.3	West Ridge Resources Inc.
39.	Rockspring	West Virginia	2.2	Rockspring Development, Inc.
40.	Stockton	West Virginia	2.1	Cannelton Industries (AEI)
41.	Turris	Illinois	2.1	Turris Coal Company
42.	Dugout Canyon ¹	Utah	2.0	Canyon Fuel Company
43.	Ellis Eagle	West Virginia	2.0	Marfork Coal Company
44.	Freedom Energy	Kentucky	1.9	Sidney Coal Company
45.	Pattiki	Illinois	1.9	White County Coal LLC
46.	VP #8	Virginia	1.9	CONSOL Energy Inc.
47.	No. 7	Alabama	1.8	Jim Walter Resources
48.	Oak Grove	Alabama	1.8	U.S. Steel Mining Co.
49.	Huff Creek	Kentucky	1.7	Arch Coal, Inc.
50.	Excel	Kentucky	1.7	Excel Mining, LLC

TABLE 3

**Major U.S. Underground Coal Mines - 2001
(Million Short Tons)
(Continued)**

	Mine Name	Location	Tonnage	Operating Company
51.	Wabash	Illinois	1.6	Wabash Mine Holding Co.
52.	Harrison	Ohio	1.5	Harrison Mining Corp.
53.	No. 5	Alabama	1.5	Jim Walter Resources
54.	Eighty-Four Mine	Pennsylvania	1.4	CONSOL Energy Inc.
55.	Rend Lake	Illinois	1.4	CONSOL Energy Inc.
56.	Clean Energy	Kentucky	1.3	Sidney Coal Company
57.	Lightfoot No. 2	West Virginia	1.3	Peabody Energy Subsidiary
58.	San Juan	New Mexico	1.3	BHP Billiton
59.	Burrell	Pennsylvania	1.2	PennAmerican Coal LP
60.	Jerry Fork	West Virginia	1.2	Nicholas Energy
61.	Solid Energy	Kentucky	1.2	Sidney Coal Company
62.	Loveridge	West Virginia	1.1	CONSOL Energy Inc.
63.	MC Mining	Kentucky	1.1	MC Mining
64.	Meigs No. 2	Ohio	1.1	CONSOL Energy Inc.
65.	Straight Creek VG	Kentucky	1.1	Straight Creek Coal Co.
66.	Darby Fork	Kentucky	1.0	Arch Coal, Inc.
67.	Trail Mountain	Utah	0.9	Energy West Mining Co.

Notes: Figures are rounded. 2001 data compiled from 2002 NMA survey of major producers.

May not be all-inclusive. Any companies not included in this listing are invited to submit data for the next edition.

¹ Figure includes 100% of Arch's 65% interest in Canyon Fuels mine.

TABLE 4**Major U.S. Surface Coal Mines - 2001
(Million Short Tons)**

	Mine Name	Location	Tonnage	Operating Company
1.	North Antelope/Rochelle	Wyoming	75.4	Peabody Energy Subsidiary
2.	Black Thunder	Wyoming	68.3	Arch Coal, Inc.
3.	Cordero-Rojo	Wyoming	43.5	Kennecott Energy Co.
4.	Jacobs Ranch	Wyoming	29.3	Kennecott Energy Co.
5.	Caballo	Wyoming	28.3	Peabody Energy Subsidiary
6.	Eagle Butte	Wyoming	24.8	RAG Coal West, Inc.
7.	Antelope	Wyoming	24.6	Kennecott Energy Co.
8.	North Rochelle	Wyoming	23.8	Triton Coal Co., LLC
9.	Buckskin	Wyoming	19.2	Triton Coal Co., LLC
10.	Freedom	North Dakota	15.7	The Coteau Properties Co.
11.	Belle Ayr	Wyoming	11.7	RAG Coal West, Inc.
12.	Martin Lake	Texas	11.6	Texas Utilities Mining Company (TXU)
13.	Rosebud ¹	Montana	11.3	Western Energy Co.
14.	Spring Creek	Montana	9.6	Kennecott Energy Co.
15.	Decker ²	Montana	9.5	Kiewit Mining Group, Inc.
16.	Kayenta	Arizona	8.2	Peabody Energy Subsidiary
17.	Navajo	New Mexico	8.1	BHP Billiton
18.	Falkirk	North Dakota	7.7	The Falkirk Mining Company
19.	Monticello	Texas	7.5	Texas Utilities Mining Company (TXU)
20.	Jewett ¹	Texas	7.1	Northwestern Resources Co.
21.	McKinley	New Mexico	6.9	The Pittsburg & Midway Coal Mining Co.
22.	Jim Bridger	Wyoming	6.1	Bridger Coal Co.
23.	Absaloka ³	Montana	5.9	Westmoreland Resources Inc.
24.	Lee Ranch	New Mexico	5.9	Peabody Energy Subsidiary
25.	Samples	West Virginia	5.9	Arch Coal, Inc.
26.	Colowyo	Colorado	5.8	Kennecott Energy Co.
27.	Sadow	Texas	5.7	Aluminum Co. of America (ALCOA)
28.	Black Mesa	Arizona	4.9	Peabody Energy Subsidiary
29.	Hobet 21	West Virginia	4.9	Arch Coal, Inc.
30.	La Plata	New Mexico	4.8	BHP Billiton
31.	Fola Coal	West Virginia	4.5	Nicholas-Clay
32.	Kemmerer	Wyoming	4.5	The Pittsburg & Midway Coal Mining Co.
33.	Big Brown	Texas	3.7	Texas Utilities Mining Company (TXU)
34.	Wyodak	Wyoming	3.5	Wyodak Resources Dev. Corp.
35.	Black Butte ⁴	Wyoming	3.5	Kiewit Mining Group, Inc.
36.	Ruffner	West Virginia	3.4	Arch Coal, Inc.
37.	San Miguel Lignite	Texas	3.3	The North American Coal Corp.
38.	Evergreen	West Virginia	3.3	Evergreen Mining
39.	S. Hallsville No. 1	Texas	3.2	The Sabine Mining Co.
40.	Dry Fork	Wyoming	3.2	Dry Fork Coal Co.
41.	Wildcat MTR	West Virginia	3.1	Nicholas Energy Co.
42.	Beulah ¹	North Dakota	3.1	Dakota Westmoreland Corp.
43.	Twilight MTR	West Virginia	3.0	Progress Coal Company
44.	Black Castle	West Virginia	2.9	Black Castle Mining Company
45.	Dolet Hills Lignite	Louisiana	2.8	Dolet Hills Lignite Co.
46.	Big Sky	Montana	2.6	Peabody Energy Subsidiary
47.	Martin County MTR	Kentucky	2.3	Martin County Coal Corp.
48.	Phoenix	West Virginia	2.2	Arch Coal, Inc.
49.	Walnut Creek ⁴	Texas	2.1	Kiewit Mining Group, Inc.
50.	San Juan	New Mexico	1.5	BHP Billiton

Notes: Figures are rounded. 2001 data compiled from a 2002 NMA survey of major producers.

May not be all-inclusive. Any companies not included in this listing are invited to submit data for the next edition.

¹ Subsidiary of Westmoreland Mining, LLC (100% owned)

² Mine jointly owned by Kiewit Mining Group, Inc. and Kennecott Energy Co. (50% each).

³ 80% owned by Westmoreland Coal Co.

⁴ Mine jointly owned by Kiewit Mining Group, Inc. and Anadarko (50% each).

TABLE 5

**Major Multi-Mine Production Complexes - 2001
(Million Short Tons)**

Complex Name	Location	Tonnage	Company
1. Cordero-Rojo	Wyoming	43.5	Kenecott Energy Co.
2. Arizona Operating Unit	Arizona	13.1	Peabody Energy Subsidiary
3. Mingo Logan	West Virginia	6.4	Arch Coal, Inc.
4. Sidney	Kentucky	6.2	Massey Energy Co.
5. Hobet 21	West Virginia	5.8	Arch Coal, Inc.
6. Typo	Kentucky	5.6	Leslie Resources (AEI)
7. Pyro Plant	Kentucky	5.6	Lodestar Energy, Inc.
8. Independence	West Virginia	5.4	Massey Energy Co.
9. Elk Run	West Virginia	5.2	Massey Energy Co.
10. Nicholas Energy	West Virginia	4.9	Massey Energy Co.
11. Jones Fork	Kentucky	4.8	CONSOL Energy Inc.
12. Premier Elkhorn	Kentucky	4.5	Premier Elkhorn
13. Bledsoe	Kentucky	4.1	Bledsoe Coal Corporation
14. Rob Fork	Kentucky	3.9	Branham & Baker Coal, Inc.
15. Marfolk	West Virginia	3.8	Massey Energy Co.
16. Tug Valley	West Virginia	3.7	Marrowbone Development (AEI)
17. Arch of West Virginia	West Virginia	3.6	Arch Coal, Inc.
18. Logan County Mine Services	West Virginia	3.6	Massey Energy Co.
19. Mill Creek	Kentucky	3.6	CONSOL Energy Inc.
20. Progress	West Virginia	3.6	Massey Energy Co.
21. Delbarton	West Virginia	3.3	Massey Energy Co.
22. Leeco, Inc.	Kentucky	3.2	Leeco, Inc.
23. Martin County	Kentucky	3.2	Massey Energy Co.
24. Ken Car	Kentucky	3.2	Sunny Ridge Coal Co. (AEI)
25. McCoy Elkhorn	Kentucky	3.1	McCoy Elkhorn Coal Corp.
26. Lady Dunn	West Virginia	3.0	Cannelton Industries (AEI)
27. Performance	West Virginia	3.0	Massey Energy Co.
28. Brooks Run	West Virginia	2.9	Coastal Coal-West Va., LLC
29. Toms Creek	Virginia	2.9	Coastal Coal Company, LLC
30. Lone Mountain	Kentucky	2.8	Arch Coal, Inc.
31. Blue Diamond	Kentucky	2.6	Blue Diamond Coal Co.
32. Clintwood Elkhorn	Kentucky	2.4	Clintwood Elkhorn Mining
33. Kingwood	West Virginia	2.4	Coastal Coal -West Virginia LLC
34. Moss No. 3 Prep. Plant	Virginia	2.4	Clinchfield Coal Company
35. Patriot Operating Unit	Kentucky	2.4	Peabody Energy Subsidiary
36. Perry County Coal	Kentucky	2.3	Perry County Coal
37. Alloy Barge Dock	West Virginia	2.0	Vandalia Resources, Inc.
38. Hopkins County Coal	Kentucky	2.0	Hopkins County Coal, LLC
39. Roxana	Kentucky	2.0	Coastal Coal Co., LLC
40. McClure River Prep. Plant	Virginia	1.9	Clinchfield Coal Company
41. Rawl Sales & Processing	West Virginia	1.9	Massey Energy Co.
42. Vail	Kentucky	1.9	Straight Creek (AEI)
43. Cyrus Dock	West Virginia	1.8	CC Coal (AEI)
44. Midwest	Kentucky	1.8	Peabody Energy Subsidiary
45. Pardee	Virginia	1.7	Arch Coal, Inc.
46. Ramsey Prep. Plant	Virginia	1.7	Paramont Coal Corporation
47. Riverpoint Dock	West Virginia	1.7	CC Coal (AEI)
48. Laurel Creek	West Virginia	1.6	Laurel Creek Co., Inc.
49. Pioneer	West Virginia	1.6	Pioneer Fuel Corp.
50. Harrison	Ohio	1.5	Harrison Mining Co.
51. Transcontinental	Kentucky	1.5	Lodestar Energy, Inc.
52. Spruce Fork	West Virginia	1.4	Anker West Virginia Mining Co. Inc.
53. Campbells Creek	West Virginia	1.3	Arch Coal, Inc.
54. Bates Branch	West Virginia	1.3	Pike County Coal Corp. (AEI)
55. Bell County	Kentucky	1.1	Bell County Coal Corp.
56. Bush	Kentucky	1.1	Pike County Coal Corp. (AEI)

Notes: Figures are rounded. 2001 data compiled from 2002 NMA survey of major producers.

May not be all-inclusive. Any companies not included in this listing are invited to submit data for the next edition.

TABLE 6
Major Holders of U.S. Coal Reserves - 2001
(Billion Short Tons)

Holder	Estimated Reserves
1. U.S. Government	91.700 *
2. Great Northern Properties Limited Partnership	20.000
3. Peabody Energy Corporation	9.100
4. CONSOL Energy Inc.	4.400
5. Arch Coal, Inc. 1/	3.428
6. The North American Coal Corporation	2.640
7. RAG American Coal Holding, Inc.	2.147
8. Massey Energy Company	2.134
9. Norfolk Southern Corp. (Pocahontas Land Corp.)	1.740
10. Kennecott Energy Company	1.560
11. AEI Resources Inc. (Addington Enterprises, Inc.)	1.539
12. Pacific Coast Coal Company	1.500
13. Westmoreland Coal Company	1.358
14. BHP Billiton	1.150
15. Pittston Coal Company	1.100
16. Western Pocahontas Limited Partnership	1.000
17. Triton Coal Company, LLC	0.748
18. TXU Mining Co. (Texas Utilities)	0.671
19. Kentucky River Coal Corp.	0.570
20. Anker Coal Group, Inc.	0.517
21. ExxonMobil Coal and Minerals Company	0.500
22. Coastal Coal Company, LLC	0.426
23. Lodestar Energy, Inc.	0.417
24. Kiewit Mining Group, Inc.	0.405
25. Alliance Resources Partners	0.401
26. The American Coal Company (Murray Energy Corp.)	0.347
27. Western Fuels Association, Inc.	0.301
28. Black Hills Corp.	0.277
29. Usibelli Coal Mine, Inc.	0.250
30. Interwest Mining Company (Sub. Of PacifiCorp)	0.223
31. TECO Coal Corporation	0.200
32. The Pittsburg & Midway Coal Mining Co.	0.196
33. AMVEST Minerals Company LLC	0.187
34. Jim Walter Resources, Inc.	0.175
35. Drummond Company, Inc.	0.148
36. Trapper Mining Inc.	0.143
37. U.S. Steel Mining Company, LLC	0.135
38. Sun Coke Company	0.110
39. Andalex Resources, Inc.	0.085
40. KenAmerican Resources, Inc. (Murray Energy Corp.)	0.065
41. The Ohio Valley Coal Company (Murray Energy Corp.)	0.048
42. Aluminum Company of America (ALCOA Inc.)	0.041
43. Oxford Mining Co.	0.015
44. Maple Creek Mining, Inc. (Murray Energy Corp.)	0.012
45. Energy Resources, Inc. (Murray Energy Corp.)	0.011
46. PennAmerican Coal LP (Murray Energy Corp.)	0.009
47. Cravat Coal Company	0.002
48. American Electric Power Services Corp. (AEP)	N/A
49. Dolet Hills Lignite Company (Sub. of AEP)	N/A
50. James River Coal Company	N/A

Notes: 2001 data compiled from 2002 NMA survey of major producers. May not be all-inclusive.

Any companies not included in this listing are invited to submit data for the next edition.

* U.S. government total is an NMA calculation based on federal ownership of about one-third of the United States' coal resources (Bureau of Land Management, 1993) and estimated recoverable reserves of 275 billion short tons (Energy Information Administration, 1997).

N/A = Not Available. 1/ Includes 100% of Canyon Fuels reserves.

TABLE 7**U.S. Coal Mining Productivity
(Average Tons per Miner per Hour)**

Year	Underground	Surface	All Mines
1985	1.78	4.24	2.74
1986	2.00	4.60	3.01
1987	2.20	4.98	3.30
1988	2.38	5.32	3.55
1989	2.46	5.61	3.70
1990	2.54	5.94	3.83
1991	2.69	6.38	4.09
1992	2.93	6.59	4.36
1993	2.95	7.23	4.70
1994	3.19	7.67	4.98
1995	3.39	8.48	5.38
1996	3.57	9.05	5.69
1997	3.83	9.46	6.04
1998	3.90	9.58	6.20
1999 r/	3.99	10.39	6.61
2000 r/	4.17	11.05	7.02
2001 e/	4.20	11.20	7.10

Notes: Data excludes mines producing less than 10,000 short tons/year.

Data latest available. (1998 forward includes office workers). r/ Revised.

e/ NMA estimate based on preliminary 2001 Mine Safety & Health Administration (MSHA) data.

SOURCE: Energy Information Administration, *Coal Industry Annual*.