
National Mining Association

Weekly Statistical Summary

August 19, 2016 Edition
(Data for Week Ending August 13, 2016)

Prepared by
National Mining Association



Suite 500 East, 101 Constitution Avenue, NW
Washington, DC, 20001
Phone (202) 463-2600
Visit us at <http://www.nma.org>

NMA Weekly Statistical Summary

Vol. 54, No. 33
Dated 08/19/16

PRODUCTION, CONSUMPTION & TRADE

	Week Ended			* Cumulative Jan 1 to		
	08/13/16	08/15/15	% Chng	08/13/16	08/13/15	% Chng
EIA Coal Production (000 Tons):						
Week Ended/Year to Date	15,838	18,672	-15.2%	421,643	563,681	-25.2%
52 Weeks Ended	749,712	947,714	-20.9%			
AAR Coal Rail Cars Loaded:	88,905	106,339	-16.4%	2,342,499	3,237,749	-27.7%
Coal Production Month Ended - July	Jul 16/15		% Chng	Jan - Jul 16/15		% Chng
	65,088	76,618	-15.0%	383,902	527,936	-27.3%

DOC Bituminous Coal Trade (000 Tons)

Exports:	June 16/15		% Chng	Jan - June 16/15		% Chng
Metallurgical	3,423	3,952	-13.4%	20,215	26,246	-23.0%
Steam *	1,960	1,796	9.1%	7,863	15,279	-48.5%
Lignite	6	6	0.0%	34	31	9.7%
Anthracite	46	38	21.1%	288	210	37.1%
Total	5,435	5,792	-6.2%	28,400	41,766	-32.0%
Imports:	641	842	-23.9%	4,989	5,649	-11.7%

	Week Ended			Cumulative Jan 1 to		
	08/13/16	08/15/15	% Chng	08/13/16	08/15/15	% Chng
EI Electric Total Output (Mil. Kwh)	93,832	88,044	6.6%	2,571,255	2,599,143	-1.1%
EI Coal Region Output (Mil. Kwh)	81,722	76,201	7.2%	2,216,003	2,242,461	-1.2%
AISI Raw Steel Output (000 Tons)	1,685	1,726	-2.4%	55,966	56,526	-1.0%

EIA (SNL ENERGY) AVERAGE COAL SPOT PRICES Dollars Per Short Ton

Average Coal Spot Prices (\$/Short Ton)	Week Ending			Natural Gas Spot Prices (\$/MMBtu)	
	08/12/16	08/05/16	% Chng	Wed.	08/10/16
Central App, 12,500 Btu, 1.2 SO ₂	\$41.10	\$41.10	0.0%	Henry Hub	2.73
Northern App, 13,000 Btu, < 3.0 SO ₂	42.35	42.35	0.0%	New York	2.44
Illinois Basin, 11,800, 5.0 SO ₂	32.00	32.00	0.0%	Chicago	2.69
Powder River Basin, 8,800 Btu 0.8 SO ₂	8.70	8.70	0.0%	Cal.Comp.Avg.	2.81
Uinta Basin, 11,700 Btu, 0.8 SO ₂	39.40	39.40	0.0%		

Coal exports and Imports are "as reported" (not revised); *Steam excludes lignite & anthracite. All data in this report are preliminary and subject to revision.

Sources: Energy Information Administration; Edison Electric Institute; American Iron & Steel Institute; Association of American Railroads; Dept. of Commerce; SNL Energy; NGI's Daily Gas Price Index



EIA Estimated Weekly U.S. Coal Production Overview

Coal-Producing Region & State (thousand short tons)	Week Ended			Year to Date			52 Weeks Ended		
	8/13/2016 (week 33)	8/6/2016 (week 32)	8/15/2015 (week 33)	8/13/2016	8/13/2015	% Change	8/13/2016	8/15/2015	% Change
Alabama	188	172	257	5,662	9,103	-37.8	9,680	15,321	-36.8
Alaska	22	21	20	661	730	-9.5	1,102	1,241	-11.2
Arizona	113	112	139	3,206	4,492	-28.6	5,480	7,664	-28.5
Arkansas	2	2	2	38	60	-37.6	68	105	-35.2
Colorado	280	277	416	7,131	12,813	-44.3	13,080	21,793	-40.0
Illinois	918	908	1,102	26,524	36,809	-27.9	45,634	59,801	-23.7
Indiana	587	595	708	16,756	22,249	-24.7	28,604	37,195	-23.1
Kansas	4	5	3	94	122	-23.3	170	176	-3.4
Kentucky Total	986	981	1,244	27,324	40,090	-31.8	48,301	68,387	-29.4
Eastern (KY)	422	420	558	11,508	18,568	-38.0	20,874	32,016	-34.8
Western (KY)	563	561	686	15,816	21,521	-26.5	27,427	36,371	-24.6
Louisiana	72	77	97	1,748	2,020	-13.5	3,139	3,683	-14.8
Maryland	31	37	35	971	1,253	-22.5	1,622	1,994	-18.7
Mississippi	61	62	73	1,719	2,031	-15.3	2,811	3,307	-15.0
Missouri	2	2	3	75	100	-24.8	112	228	-50.9
Montana	737	744	915	18,993	26,144	-27.4	34,456	45,004	-23.4
New Mexico	444	437	441	10,673	11,784	-9.4	18,444	19,477	-5.3
North Dakota	584	591	599	16,220	17,806	-8.9	27,048	28,841	-6.2
Ohio	280	278	345	8,258	11,013	-25.0	14,188	18,740	-24.3
Oklahoma	14	13	15	390	500	-22.0	666	818	-18.6
Pennsylvania Total	906	922	1,144	24,408	32,420	-24.7	42,837	55,609	-23.0
Anthracite (PA)	47	48	47	1,158	1,279	-9.5	2,008	2,071	-3.0
Bituminous (PA)	860	875	1,097	23,250	31,141	-25.3	40,829	53,538	-23.7
Tennessee	19	16	19	501	552	-9.3	841	910	-7.6
Texas	767	770	861	20,183	20,665	-2.3	35,195	37,850	-7.0
Utah	262	286	299	7,615	8,974	-15.1	12,977	15,714	-17.4
Virginia	255	246	268	7,193	8,960	-19.7	12,245	14,513	-15.6
West Virginia Total	1,575	1,531	1,838	44,646	61,771	-27.7	77,993	102,685	-24.0
Northern (WV)	859	842	899	23,844	29,728	-19.8	41,649	48,131	-13.5
Southern (WV)	715	689	939	20,802	32,042	-35.1	36,345	54,554	-33.4
Wyoming	6,729	6,832	7,829	170,657	231,221	-26.2	313,016	386,659	-19.0
Appalachian Total	3,675	3,623	4,464	103,146	143,640	-28.2	180,281	241,788	-25.4
Interior Total	2,991	2,996	3,550	83,342	106,077	-21.4	143,827	179,533	-19.9
Western Total	9,172	9,301	10,658	235,156	313,964	-25.1	425,604	526,393	-19.1
East of Mississippi River	5,805	5,750	7,033	163,961	226,250	-27.5	284,756	378,461	-24.8
West of Mississippi River	10,033	10,170	11,639	257,682	337,431	-23.6	464,955	569,253	-18.3
Bituminous and Lignite	15,791	15,872	18,624	420,485	562,402	-25.2	747,704	945,643	-20.9
Anthracite	47	48	47	1,158	1,279	-9.5	2,008	2,071	-3.0
U.S. Total	15,838	15,920	18,672	421,643	563,681	-25.2	749,712	947,714	-20.9
Railroad Cars Loaded	88,905	89,310	106,339	2,342,499	3,237,749	-27.7	4,228,815	5,483,680	-22.9

Source: Energy Information Administration

EEI Prepared by EEI's Business Information Group

WEEKLY ELECTRIC OUTPUT

Volume 84 No. 33

OUTPUT FOR WEEK ENDED - Aug 13, 2016

Aug 17, 2016

The net available amount of electric energy distributed by the Total Electric Utility Industry+ for the week ended Saturday, Aug 13, 2016 was 93,832 gigawatthours (GWh), according to the Edison Electric Institute. This is equivalent to 189 on the weekly electric output index.

WEEKLY ELECTRIC OUTPUT BY GEOGRAPHIC DIVISION

(48 CONTIGUOUS STATES)

	Week Ended August 13		52 Weeks Ended August 13	
	GWh Output	% Increase Over Corresponding Week of 2015	GWh Output	% Increase Over Corresponding Period of 2015
New England	3,011	14.6	123,906	-2.5
Mid-Atlantic	11,163	20.5	431,507	-3.4
Central Industrial	15,616	12.9	669,887	-2.1
West Central	7,523	1.7	328,730	-0.9
Southeast	22,936	6.7	1,012,112	-1.7
South Central	18,088	2.3	707,269	-0.3
Rocky Mountain	6,396	-2.2	279,357	2.1
Pacific Northwest	2,743	-3.4	152,136	-0.1
Pacific Southwest	6,356	-0.3	286,596	1.5
Total United States	93,832	6.6	3,991,500	-1.1

WEEKLY ELECTRIC OUTPUT IN PREVIOUS WEEKS--GWh

Week Ended	2016	Week Ended	2015	% Inc. (16/15)	52 Weeks Ended	2016	% Inc. (16/15)
Jul 23	95,441	Jul 25	90,587	5.4	Jul 23	3,978,914	-1.0
Jul 30	96,099	Aug 01	93,085	3.2	Jul 30	3,981,928	-1.1
Aug 06	92,495	Aug 08	88,711	4.3	Aug 06	3,985,712	-1.1
Aug 13	93,832	Aug 15	88,044	6.6	Aug 13	3,991,500	-1.1
Aug 13	2,571,255	Aug 15	2,599,143	-1.1	YEAR TO DATE, FIRST 33 WEEKS		

WEEKLY ELECTRIC OUTPUT INDEX--TOTAL U.S.*

SEASONALLY ADJUSTED 1982 = 100

Week Ended	2016	Week Ended	2015	Week Ended	2014
Jul 23	178	Jul 25	216	Jul 26	168
Jul 30	176	Aug 01	216	Aug 02	161
Aug 06	172	Aug 08	210	Aug 09	165
Aug 13	189	Aug 15	203	Aug 16	168

* Excludes Alaska and Hawaii.

+ Includes investor-owned companies, cooperatives and government-owned utilities.

Copyright © 2016 Edison Electric Institute. All rights reserved.

EEl WEEKLY ELECTRIC OUTPUT BY GEOGRAPHIC DIVISION
(48 CONTIGUOUS STATES)

	Week Ended			NMA CUMULATIVE JANUARY WEEK ONE TO			52 Weeks Ended		
	13-Aug 2016 GWh Output	15-Aug 2015 GWh Output	% Increase Over Corresponding Week of 2015	13-Aug 2016 GWh Output	15-Aug 2015 GWh Output	% Increase Over Corresponding Week of 2015	13-Aug 2016 GWh Output	15-Aug 2015 GWh Output	% Increase Over Corresponding Week of 2015
New England	3,011	2,626	14.7%	79,080	82,069	-3.6%	123,906	127,104	-2.5%
Mid-Atlantic	11,163	9,264	20.5%	277,898	290,749	-4.4%	431,507	446,465	-3.4%
Central Industrial	15,616	13,833	12.9%	435,881	440,310	-1.0%	669,887	683,956	-2.1%
West Central	7,523	7,394	1.7%	211,845	212,949	-0.5%	328,730	331,608	-0.9%
Southeast	22,936	21,488	6.7%	659,762	668,420	-1.3%	1,012,112	1,029,693	-1.7%
South Central	18,088	17,681	2.3%	456,940	458,896	-0.4%	707,269	709,044	-0.3%
Rocky Mountain	6,396	6,541	-2.2%	173,677	171,137	1.5%	279,357	273,588	2.1%
Pacific Northwest	2,743	2,841	-3.4%	96,924	96,936	0.0%	152,136	152,224	-0.1%
Pacific Southwest	6,356	6,376	-0.3%	179,248	177,679	0.9%	286,596	282,460	1.5%
Total United States ^{1/}	93,832	88,044	6.6%	2,571,255	2,599,145	-1.1%	3,991,500	4,036,142	-1.1%
Coal Regions Only ^{2/}	81,722	76,201	7.2%	2,216,003	2,242,461	-1.2%	3,428,862	3,474,354	-1.3%

Notes: EEI output data are an estimate of electricity load made available for distribution derived as weekly net generation + purchases from non-utilities + net imports - exports - sales for resale. It is not meant to be a measure of electricity generation for the U.S. EEI survey data represent the majority of national distribution (large utilities, large government power projects, some independent and large municipal power projects). The remaining segment of the industry (smaller producers) is estimated. Non-utility generation is captured via direct sales to utilities.

^{1/} Excludes Alaska and Hawaii

^{2/} Excludes New England and Pacific regions

SOURCE: Edison Electric Institute (EEI), *Weekly Electric Output Report*.

AMERICAN IRON AND STEEL INSTITUTE
 25 Massachusetts Avenue, NW, Suite 800
 Washington, D.C. 20001

August 15, 2016

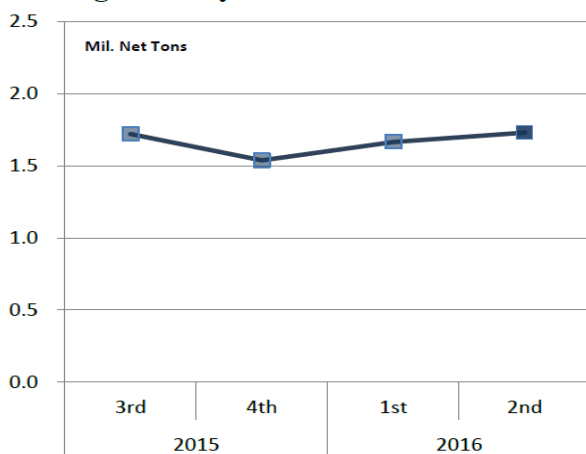
ESTIMATED WEEKLY RAW STEEL * PRODUCTION

<u>Period</u>	<u>Thousand Net Tons</u>	<u>Percent Change from Previous Period</u>	<u>Percent Capability Utilization**</u>	<u>Production by District</u>		
				<u>Week Ending Aug. 13</u>	<u>Week Ending Aug. 6</u>	
<u>Week Ending</u>				North East	203	195
				Great Lakes	675	663
August 13, 2016	1,685	-0.7	72.1	Midwest	164	165
August 13, 2015	1,726	-2.4	72.2	Southern	575	603
August 6, 2016	1,697	1.0	72.6	Western	68	71
				Total	1,685	1,697
<u>Year-to-Date +</u>						
August 13, 2016	55,966	-1.0	72.5			
August 13, 2015	56,526	-	72.3			

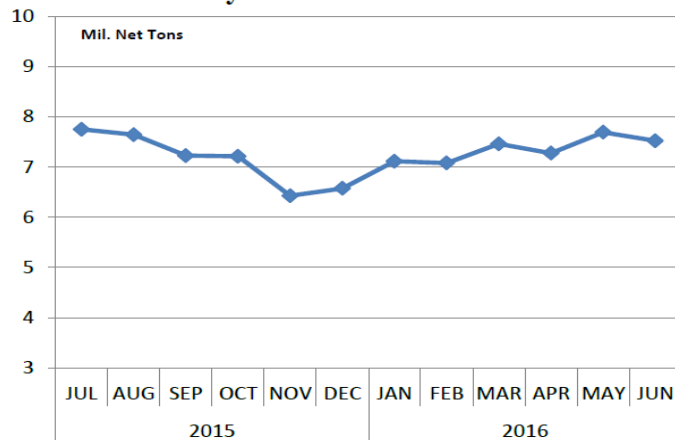
*Raw steel production tonnage included in this report is estimated based on a sampling of steel producers (50% of domestic producers). Therefore, this report should be used primarily to assess production trends. The AISI production report "AIS 7," produced monthly and available by subscription, provides a more accurate summary of steel production based on data supplied by companies representing approximately 75% of U.S. production capacity plus includes revisions for previous months.

NOTE: Capacity for the third quarter 2016 is approximately 30.7 million net tons vs. 31.4 million net tons for the same period last year, and 30.4 million tons for the second quarter of 2016.

Average Weekly Raw Steel Production



Monthly Raw Steel Production



*Steel in the first solid state after melting suitable for further processing or sale, including ingots, steel for castings and strand or pressure cast blooms, slabs or other product forms. ** Based on tonnage capability to produce raw steel for a sustained full order book.



Source: Kitco website - www.kitco.com/connecting.html

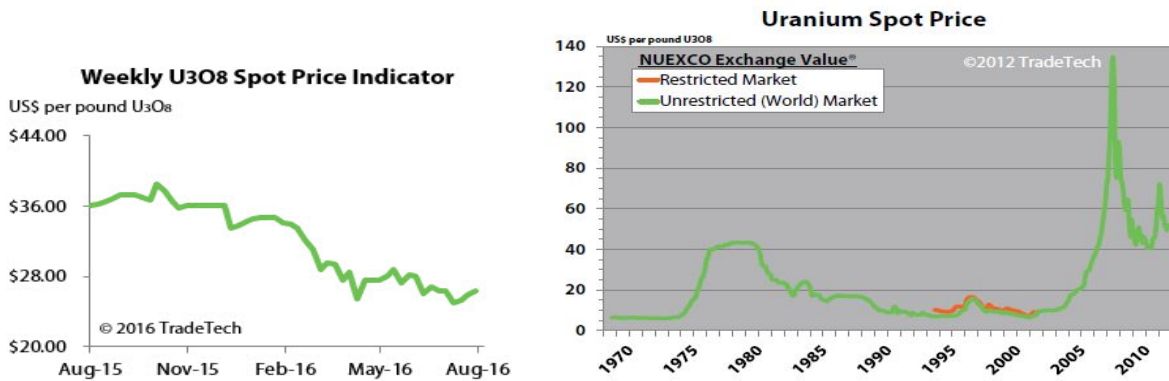


Source: Kitco website - www.kitco.com/connecting.html

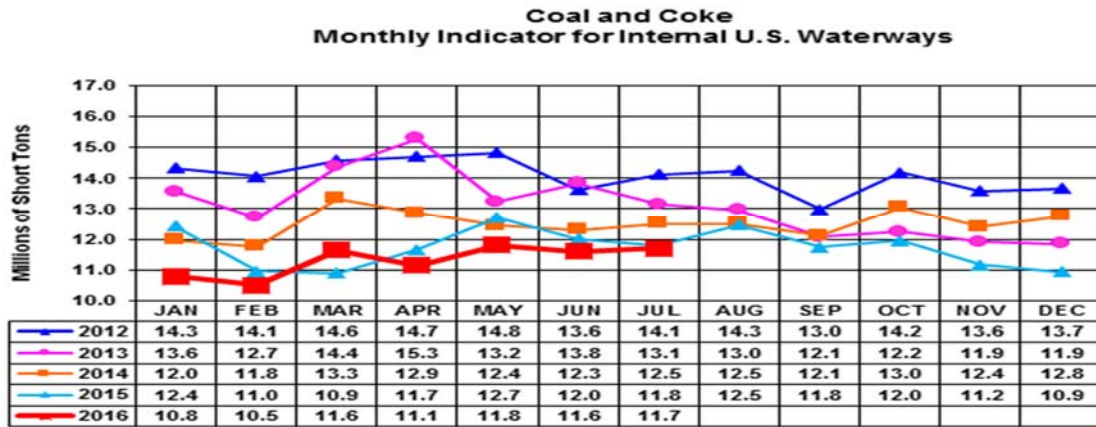


Source: Kitco website - www.kitco.com/connecting.html

Trade Tech's Uranium Price Indicators

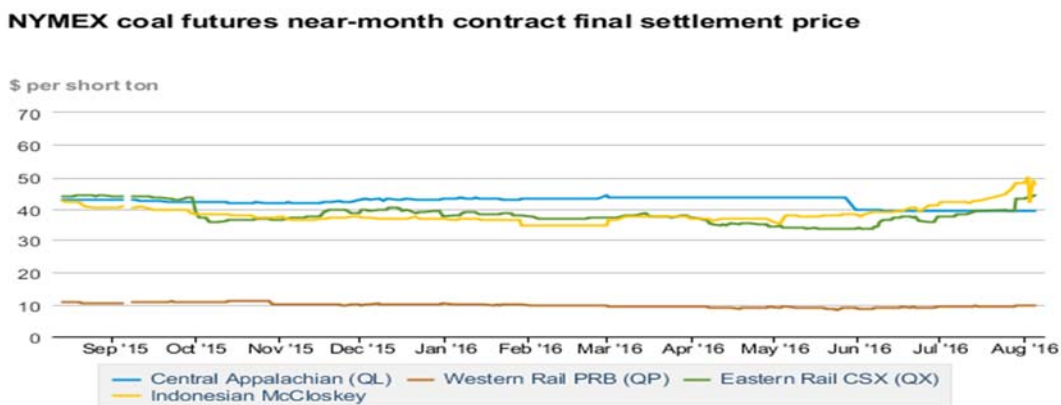


Source: Trade Tech, Uranium Info Website – www.uranium.info



Source: U.S. Army Corps of Engineers, Waterborne Commerce Statistics Center

NYMEX Coal Futures Near-month Contract Final Settlement Price



Source: The New York Mercantile Exchange (NYMEX), Daily Energy Bulletin.

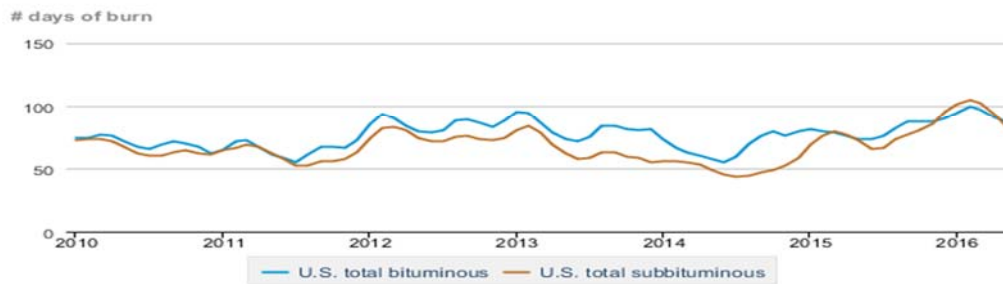
Source: Energy Information Administration, based on NYMEX and Daily Energy Bulletin data

Average weekly coal commodity spot prices *dollars per short ton*

	Week ending					Week ago
	07/08/16	07/15/16	07/29/16	08/05/16	08/12/16	change
Central Appalachia <i>12,500 Btu, 1.2 SO₂</i>	\$41.10	\$41.10	\$41.10	\$41.10	\$41.10	\$0.00
Northern Appalachia <i>13,000 Btu, < 3.0 SO₂</i>	\$43.35	\$43.35	\$43.35	\$42.35	\$42.35	\$0.00
Illinois Basin <i>11,800 Btu, 5.0 SO₂</i>	\$32.00	\$32.00	\$32.00	\$32.00	\$32.00	\$0.00
Powder River Basin <i>8,800 Btu, 0.8 SO₂</i>	\$8.70	\$8.70	\$8.70	\$8.70	\$8.70	\$0.00
Uinta Basin <i>11,700 Btu, 0.8 SO₂</i>	\$39.40	\$39.40	\$39.40	\$39.40	\$39.40	\$0.00

Source: Energy Information Administration (with permission from SNL), *Coal News and Markets Report*

Days of burn by non-lignite coal rank, January 2009 - May 2016



Source: U.S. Energy Information Administration

Source: Energy Information Administration, *Electricity Monthly Update Report*

Region	Temperature -- heating & cooling degree days (week ending Jul 28)					
	HDD Current	HDD deviation from:		CDD Current	CDD deviation from:	
		normal	last year		normal	last year
New England	0	-2	0	54	10	-6
Middle Atlantic	0	-3	0	64	5	-4
E N Central	0	-4	-1	71	15	20
W N Central	0	-2	-1	71	1	9
South Atlantic	0	0	0	114	17	7
E S Central	0	0	0	108	14	8
W S Central	0	0	0	139	13	4
Mountain	0	-2	0	91	14	8
Pacific	0	-2	0	72	25	2
United States	0	-2	0	88	14	6

Note: HDD = heating degree-day; CDD = cooling degree-day

Source: National Oceanic and Atmospheric Administration

Source: Energy Information Administration

USGS Production of Selected Mineral Commodities	2016 Year to Date - 1st Quarter	2015 Year to Date - 1st Quarter	Percent Change
Aluminum, secondary (000 Mt.)	226.0	191.0	18%
Cement (Mil. Mt.)	17.0	14.9	14%
Copper (000 Mt.)	355.0	336.0	6%
Gold (Mt.)	49.7	48.2	3%
Gypsum (Mil. Mt.)	4.1	3.4	21%
Iron Ore (Mil. Mt.)	9.0	13.0	-31%
Lead (000 Mt.)	82.6	93.8	-12%
Molybdenum (000 Mt.)	6.4	13.8	-54%
Phosphate rock (Mil. Mt.)	6.1	6.2	-2%
Sand & gravel, construction (Mil. Mt.)	173.0	157.0	10%
Silver (Mt.)	277.0	283.0	-2%
Soda ash (Mil. Mt.)	2.9	2.9	0%
Stone, crushed (Mil. Mt.)	270.0	224.0	21%
Zinc (000 Mt.)	166.0	203.0	-18%

Source: U.S. Geological Survey, Mineral Industry Surveys. Percent change based on USGS rounded numbers. 2016 data are preliminary estimates.

Natural gas spot prices (Henry Hub)



 Source: Natural Gas Intelligence

Source: Energy Information Administration, *Natural Gas Weekly Update*

EIA Coal Stocks and Average Number of Days of Burn (Power Sector)

Coal stocks and average number of days of burn for non-lignite coal by region (electric power sector)

Zone	Coal	May 2016		May 2015		% Change of Stocks	April 2016		% Change of Stocks
		Stocks (1000 tons)	Days of Burn	Stocks (1000 tons)	Days of Burn		Stocks (1000 tons)	Days of Burn	
Northeast	Bituminous	7,439	115	6,638	84	12.1%	7,641	117	-2.6%
	Subbituminous	171	184	797	242	-78.5%	171	184	0.0%
South	Bituminous	37,894	84	34,738	72	9.1%	37,654	89	0.6%
	Subbituminous	7,959	82	7,066	75	12.6%	7,838	86	1.5%
Midwest	Bituminous	18,853	92	15,727	73	19.9%	18,365	95	2.7%
	Subbituminous	47,382	80	40,939	65	15.7%	46,805	86	1.2%
West	Bituminous	5,861	76	5,544	70	5.7%	5,587	76	4.9%
	Subbituminous	39,169	90	35,064	80	11.7%	41,393	103	-5.4%
U.S. Total	Bituminous	70,047	87	62,648	73	11.8%	69,247	91	1.2%
	Subbituminous	94,681	84	83,866	72	12.9%	96,207	93	-1.6%

Source: Energy Information Administration, *Electricity Monthly Update*

EIA Working Natural Gas Underground Storage

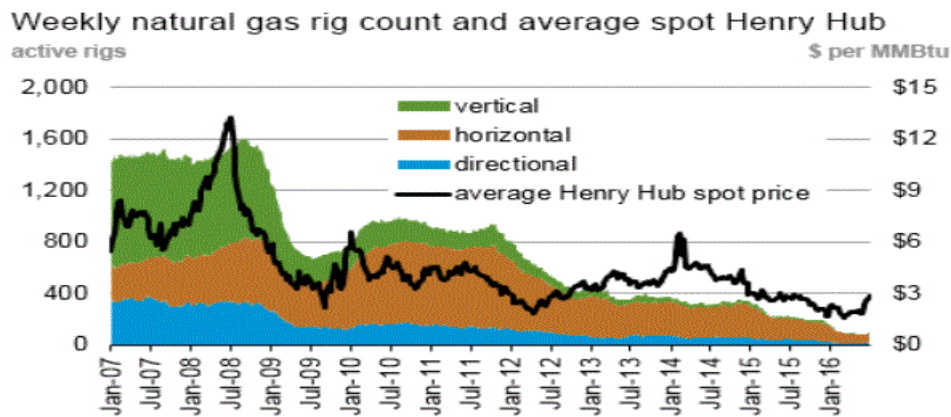
Working gas in underground storage

Region	Stocks billion cubic feet (Bcf)		
	2016-08-05	2016-07-29	change
East	746	729	17
Midwest	845	825	20
Mountain	215	213	2
Pacific	314	314	0
South Central	1,197	1,207	-10
Total	3,317	3,288	29

Source: U.S. Energy Information Administration

Source: Energy Information Administration, *Natural Gas Weekly Update*

EIA Natural Gas Rig Count and Price Trend



eia Source: Baker Hughes

Source: Energy Information Administration, *Natural Gas Weekly Update*

EIA Oil and Natural Gas Rig Productivity

Region	New-well oil production per rig barrels/day			New-well gas production per rig thousand cubic feet/day		
	August 2016	September 2016	change	August 2016	September 2016	change
Bakken	857	875	18	1,149	1,189	40
Eagle Ford	1,076	1,089	13	3,194	3,232	38
Haynesville	31	31	-	5,573	5,639	66
Marcellus	69	69	-	11,353	11,503	150
Niobrara	961	982	21	3,004	3,080	76
Permian	520	522	2	895	895	-
Utica	351	360	9	7,547	7,659	112
Rig-weighted average	560	578	18	2,859	2,767	(92)

Source: Energy Information Administration, *Drilling Productivity Report*