
National Mining Association

Weekly Statistical Summary

August 26, 2016 Edition
(Data for Week Ending August 20, 2016)

Prepared by
National Mining Association



Suite 500 East, 101 Constitution Avenue, NW
Washington, DC, 20001
Phone (202) 463-2600
Visit us at <http://www.nma.org>

NMA Weekly Statistical Summary

Vol. 54, No. 34
Dated 08/26/16

PRODUCTION, CONSUMPTION & TRADE

	Week Ended			* Cumulative Jan 1 to		
	08/20/16	08/22/15	% Chng	08/20/16	08/20/15	% Chng
EIA Coal Production (000 Tons):						
Week Ended/Year to Date	15,951	18,836	-15.3%	437,595	582,471	-24.9%
52 Weeks Ended	746,827	946,776	-21.1%			
AAR Coal Rail Cars Loaded:	89,599	107,273	-16.5%	2,432,098	3,344,752	-27.3%
Coal Production Month Ended - July						
Coal Production	Jul 16/15		% Chng	Jan - Jul 16/15		% Chng
Month Ended - July	65,088	76,618	-15.0%	383,902	527,936	-27.3%

DOC Bituminous Coal Trade (000 Tons)

Exports:	June 16/15		% Chng	Jan - June 16/15		% Chng
Metallurgical	3,423	3,952	-13.4%	20,215	26,246	-23.0%
Steam *	1,960	1,796	9.1%	7,863	15,279	-48.5%
Lignite	6	6	0.0%	34	31	9.7%
Anthracite	46	38	21.1%	288	210	37.1%
Total	5,435	5,792	-6.2%	28,400	41,766	-32.0%
Imports:	641	842	-23.9%	4,989	5,649	-11.7%

	Week Ended			Cumulative Jan 1 to		
	08/20/16	08/22/15	% Chng	08/20/16	08/22/15	% Chng
EI Electric Total Output (Mil. Kwh)	90,103	87,622	2.8%	2,661,358	2,686,765	-0.9%
EI Coal Region Output (Mil. Kwh)	77,545	75,374	2.9%	2,293,548	2,317,835	-1.0%
AISI Raw Steel Output (000 Tons)	1,655	1,726	-4.1%	57,621	58,253	-1.1%

EIA (SNL ENERGY) AVERAGE COAL SPOT PRICES Dollars Per Short Ton

Average Coal Spot Prices (\$/Short Ton)	Week Ending			Natural Gas Spot Prices (\$/MMBtu)	
	08/19/16	08/12/16	% Chng	Wed.	08/17/16
Central App, 12,500 Btu, 1.2 SO ₂	\$41.10	\$41.10	0.0%	Henry Hub	2.71
Northern App, 13,000 Btu, < 3.0 SO ₂	42.35	42.35	0.0%	New York	2.44
Illinois Basin, 11,800, 5.0 SO ₂	32.00	32.00	0.0%	Chicago	2.66
Powder River Basin, 8,800 Btu 0.8 SO ₂	8.70	8.70	0.0%	Cal.Comp.Avg.	2.86
Uinta Basin, 11,700 Btu, 0.8 SO ₂	39.40	39.40	0.0%		

Coal exports and Imports are "as reported" (not revised); *Steam excludes lignite & anthracite. All data in this report are preliminary and subject to revision.

Sources: Energy Information Administration; Edison Electric Institute; American Iron & Steel Institute; Association of American Railroads; Dept. of Commerce; SNL Energy; NGI's Daily Gas Price Index



NMA
THE AMERICAN RESOURCE

National Mining Association Web Site: [http:// www.nma.org](http://www.nma.org)

EIA Estimated Weekly U.S. Coal Production Overview

Coal-Producing Region & State (thousand short tons)	Week Ended			Year to Date			52 Weeks Ended		
	8/20/2016 (week 34)	8/13/2016 (week 33)	8/22/2015 (week 34)	8/20/2016	8/20/2015	% Change	8/20/2016	8/22/2015	% Change
Alabama	189	188	259	5,851	9,361	-37.5	9,610	15,244	-37.0
Alaska	24	22	20	684	750	-8.8	1,106	1,233	-10.3
Arizona	109	113	140	3,315	4,631	-28.4	5,449	7,636	-28.6
Arkansas	1	2	2	39	62	-37.3	68	106	-35.8
Coloradc	259	280	420	7,390	13,231	-44.1	12,920	21,704	-40.5
Illinois	925	918	1,112	27,449	37,918	-27.6	45,447	59,764	-24.0
Indiana	580	587	715	17,335	22,961	-24.5	28,469	37,150	-23.4
Kansas	4	4	3	98	125	-22.2	170	179	-5.0
Kentucky Total	972	986	1,254	28,297	41,341	-31.6	48,019	68,103	-29.5
Eastern (KY)	414	422	562	11,922	19,129	-37.7	20,726	31,824	-34.9
Western (KY)	558	563	692	16,374	22,212	-26.3	27,293	36,280	-24.8
Louisiana	70	72	98	1,817	2,117	-14.2	3,112	3,698	-15.8
Maryland	32	31	35	1,002	1,288	-22.2	1,619	1,990	-18.6
Mississippi	58	61	73	1,777	2,104	-15.5	2,796	3,297	-15.2
Missouri	2	2	3	77	103	-25.6	111	222	-50.0
Montana	738	737	923	19,731	27,065	-27.1	34,272	45,007	-23.9
New Mexicc	447	444	445	11,120	12,229	-9.1	18,446	19,496	-5.4
North Dakota	589	584	604	16,809	18,409	-8.7	27,033	28,910	-6.5
Ohio	280	280	348	8,538	11,361	-24.9	14,120	18,667	-24.4
Oklahoma	14	14	15	404	515	-21.5	665	816	-18.5
Pennsylvania Tota	892	906	1,154	25,300	33,571	-24.6	42,574	55,578	-23.4
Anthracite (PA)	47	47	48	1,205	1,327	-9.2	2,007	2,078	-3.4
Bituminous (PA)	844	860	1,107	24,094	32,244	-25.3	40,567	53,499	-24.2
Tennessee	19	19	20	520	572	-9.0	841	912	-7.8
Texas	790	767	868	20,973	21,531	-2.6	35,116	37,784	-7.1
Utah	266	262	302	7,882	9,275	-15.0	12,941	15,669	-17.4
Virginia	261	255	271	7,455	9,230	-19.2	12,236	14,495	-15.6
West Virginia Total	1,625	1,575	1,854	46,270	63,620	-27.3	77,764	102,347	-24.0
Northern (WV)	905	859	907	24,749	30,633	-19.2	41,647	48,111	-13.4
Southern (WV)	719	715	947	21,521	32,987	-34.8	36,117	54,236	-33.4
Wyoming	6,804	6,729	7,897	177,461	239,099	-25.8	311,923	386,769	-19.4
Appalachian Tota	3,712	3,675	4,503	106,858	148,132	-27.9	179,490	241,057	-25.5
Interior Total	3,002	2,991	3,581	86,344	109,649	-21.3	143,247	179,295	-20.1
Western Total	9,237	9,172	10,751	244,393	324,689	-24.7	424,090	526,424	-19.4
East of Mississippi River	5,833	5,805	7,095	169,795	233,327	-27.2	283,495	377,548	-24.9
West of Mississippi River	10,118	10,033	11,741	267,800	349,143	-23.3	463,332	569,228	-18.6
Bituminous and Lignite	15,904	15,791	18,788	436,389	581,144	-24.9	744,820	944,698	-21.2
Anthracite	47	47	48	1,205	1,327	-9.2	2,007	2,078	-3.4
U.S. Total	15,951	15,838	18,836	437,595	582,471	-24.9	746,827	946,776	-21.1
Railroad Cars Loaded	89,599	88,905	107,273	2,432,098	3,344,752	-27.3	4,211,141	5,475,903	-23.1

Source: Energy Information Administration

Prepared by EEI's Business Information Group

WEEKLY ELECTRIC OUTPUT

Volume 84 No. 34

OUTPUT FOR WEEK ENDED - Aug 20, 2016

Aug 24, 2016

The net available amount of electric energy distributed by the Total Electric Utility Industry+ for the week ended Saturday, **Aug 20, 2016** was **90,103** gigawatthours (GWh), according to the Edison Electric Institute. This is equivalent to **181** on the weekly electric output index.

WEEKLY ELECTRIC OUTPUT BY GEOGRAPHIC DIVISION

(48 CONTIGUOUS STATES)

	Week Ended August 20		52 Weeks Ended August 20	
	GWh Output	% Increase Over Corresponding Week of 2015	GWh Output	% Increase Over Corresponding Period of 2015
New England	3,029	-1.2	123,870	-3.0
Mid-Atlantic	11,165	7.7	432,304	-3.5
Central Industrial	14,769	5.3	670,634	-1.9
West Central	7,360	5.8	329,134	-0.6
Southeast	22,836	7.0	1,013,599	-1.5
South Central	14,996	-7.3	706,095	-0.3
Rocky Mountain	6,419	-1.4	279,267	1.8
Pacific Northwest	2,803	5.6	152,285	0.0
Pacific Southwest	6,726	3.0	286,792	1.4
Total United States	90,103	2.8	3,993,980	-1.1

WEEKLY ELECTRIC OUTPUT IN PREVIOUS WEEKS--GWh

Week Ended	2016	Week Ended	2015	% Inc. (16/15)	52 Weeks Ended	2016	% Inc. (16/15)
Jul 30	96,099	Aug 01	93,085	3.2	Jul 30	3,981,928	-1.1
Aug 06	92,495	Aug 08	88,711	4.3	Aug 06	3,985,712	-1.1
Aug 13	93,832	Aug 15	88,044	6.6	Aug 13	3,991,500	-1.1
Aug 20	90,103	Aug 22	87,622	2.8	Aug 20	3,993,980	-1.1
Aug 20	2,661,358	Aug 22	2,686,765	-0.9	YEAR TO DATE, FIRST 34 WEEKS		

WEEKLY ELECTRIC OUTPUT INDEX--TOTAL U.S.*

SEASONALLY ADJUSTED 1982 = 100

Week Ended	2016	Week Ended	2015	Week Ended	2014
Jul 30	176	Aug 01	216	Aug 02	161
Aug 06	172	Aug 08	210	Aug 09	165
Aug 13	189	Aug 15	203	Aug 16	168
Aug 20	181	Aug 22	207	Aug 23	176

* Excludes Alaska and Hawaii.

+ Includes investor-owned companies, cooperatives and government-owned utilities.

Copyright © 2016 Edison Electric Institute. All rights reserved.

EEI WEEKLY ELECTRIC OUTPUT BY GEOGRAPHIC DIVISION
(48 CONTIGUOUS STATES)

	Week Ended			NMA CUMULATIVE JANUARY WEEK ONE TO			52 Weeks Ended		
	20-Aug 2016 GWh Output	22-Aug 2015 GWh Output	% Increase Over Corresponding Week of 2015	20-Aug 2016 GWh Output	22-Aug 2015 GWh Output	% Increase Over Corresponding Week of 2015	20-Aug 2016 GWh Output	22-Aug 2015 GWh Output	% Increase Over Corresponding Week of 2015
New England	3,029	3,064	-1.1%	82,109	85,133	-3.6%	123,870	127,752	-3.0%
Mid-Atlantic	11,165	10,368	7.7%	289,063	301,117	-4.0%	432,304	447,933	-3.5%
Central Industrial	14,769	14,022	5.3%	450,650	454,332	-0.8%	670,634	683,467	-1.9%
West Central	7,360	6,956	5.8%	219,205	219,905	-0.3%	329,134	331,258	-0.6%
Southeast	22,836	21,349	7.0%	682,598	689,769	-1.0%	1,013,599	1,029,087	-1.5%
South Central	14,996	16,170	-7.3%	471,936	475,066	-0.7%	706,095	708,336	-0.3%
Rocky Mountain	6,419	6,509	-1.4%	180,096	177,646	1.4%	279,267	274,251	1.8%
Pacific Northwest	2,803	2,654	5.6%	99,727	99,590	0.1%	152,285	152,233	0.0%
Pacific Southwest	6,726	6,530	3.0%	185,974	184,209	1.0%	286,792	282,763	1.4%
Total United States ^{1/}	<u>90,103</u>	<u>87,622</u>	2.8%	<u>2,661,358</u>	<u>2,686,767</u>	-0.9%	<u>3,993,980</u>	<u>4,037,080</u>	-1.1%
Coal Regions Only ^{2/}	77,545	75,374	2.9%	2,293,548	2,317,835	-1.0%	3,431,033	3,474,332	-1.2%

Notes: EEI output data are an estimate of electricity load made available for distribution derived as weekly net generation + purchases from non-utilities + net imports - exports - sales for resale. It is not meant to be a measure of electricity generation for the U.S. EEI survey data represent the majority of national distribution (large utilities, large government power projects, some independent and large municipal power projects). The remaining segment of the industry (smaller producers) is estimated. Non-utility generation is captured via direct sales to utilities.

^{1/} Excludes Alaska and Hawaii

^{2/} Excludes New England and Pacific regions

SOURCE: Edison Electric Institute (EEI), *Weekly Electric Output Report*.

AMERICAN IRON AND STEEL INSTITUTE
 25 Massachusetts Avenue, NW, Suite 800
 Washington, D.C. 20001

August 22, 2016

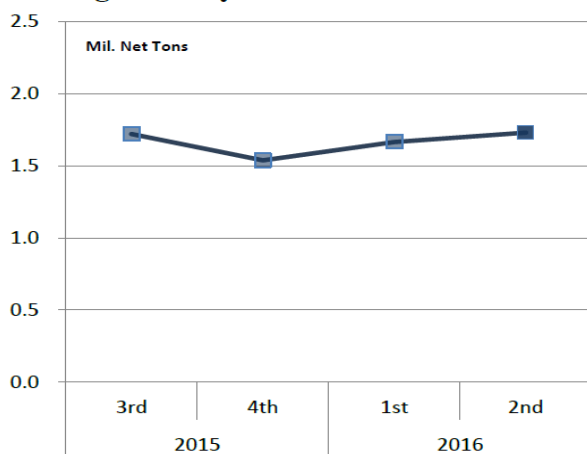
ESTIMATED WEEKLY RAW STEEL * PRODUCTION

<u>Period</u>	<u>Thousand Net Tons</u>	<u>Percent Change from Previous Period</u>	<u>Percent Capacity Utilization**</u>	<u>Production by District</u>		
				<u>Week Ending Aug. 20</u>	<u>Week Ending Aug. 13</u>	
<u>Week Ending</u>				North East	205	203
				Great Lakes	651	675
August 20, 2016	1,655	-1.8	70.8	Midwest	161	164
August 20, 2015	1,726	-4.1	72.2	Southern	568	575
August 13, 2016	1,685	-0.7	72.1	Western	<u>70</u>	<u>68</u>
				Total	1,655	1,685
<u>Year-to-Date +</u>						
August 20, 2016	57,621	-1.1	72.5			
August 20, 2015	58,253	-	72.3			

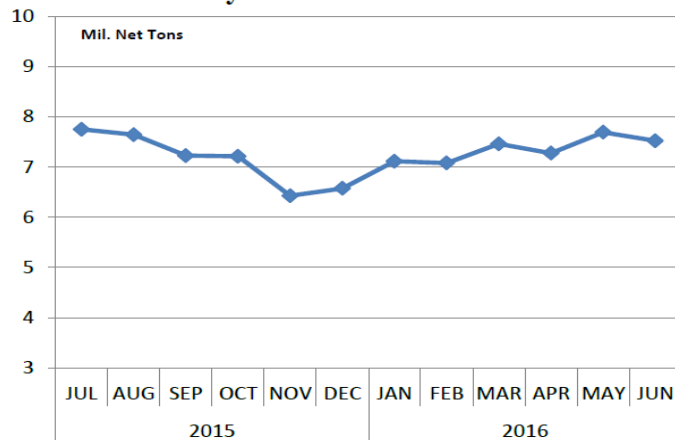
*Raw steel production tonnage included in this report is estimated based on a sampling of steel producers (50% of domestic producers). Therefore, this report should be used primarily to assess production trends. The AISI production report "AIS 7," produced monthly and available by subscription, provides a more accurate summary of steel production based on data supplied by companies representing approximately 75% of U.S. production capacity plus includes revisions for previous months.

NOTE: Capacity for the third quarter 2016 is approximately 30.7 million net tons vs. 31.4 million net tons for the same period last year, and 30.4 million tons for the second quarter of 2016.

Average Weekly Raw Steel Production



Monthly Raw Steel Production



*Steel in the first solid state after melting suitable for further processing or sale, including ingots, steel for castings and strand or pressure cast blooms, slabs or other product forms. ** Based on tonnage capability to produce raw steel for a sustained full order book.



Source: Kitco website - www.kitco.com/connecting.html

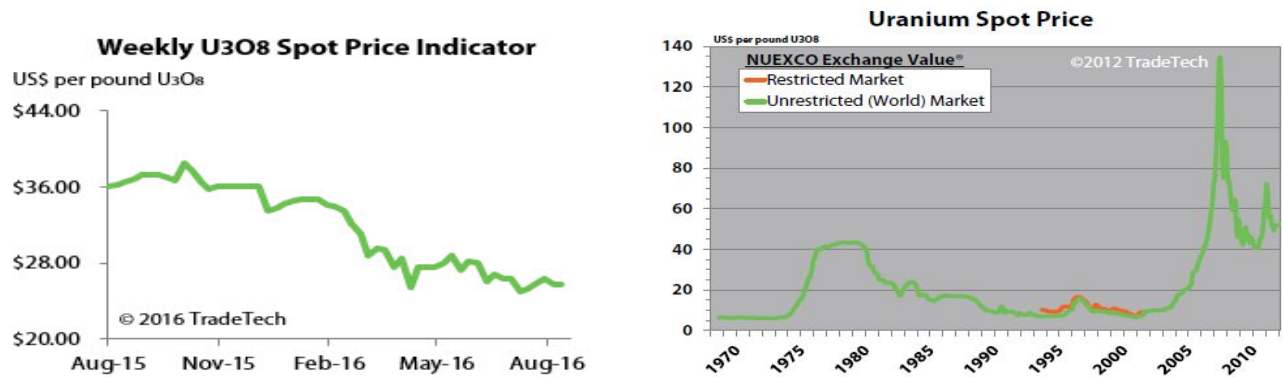


Source: Kitco website - www.kitco.com/connecting.html

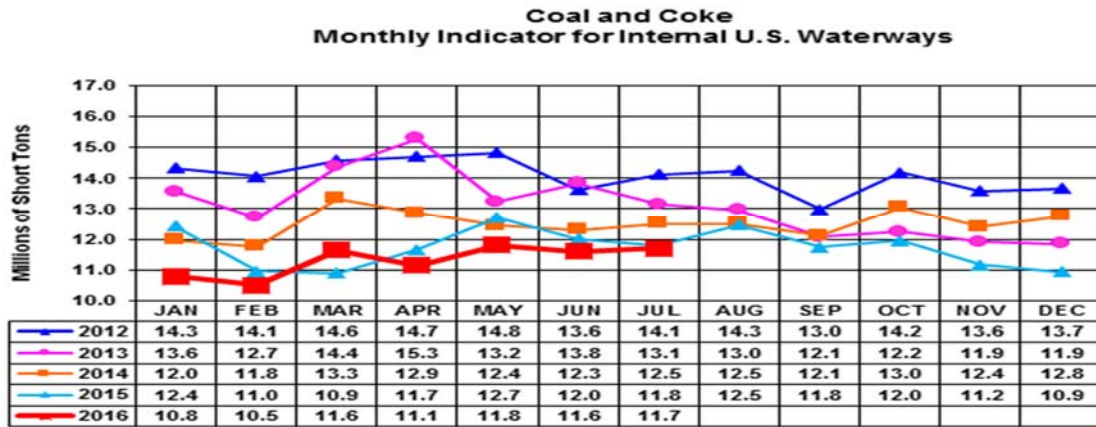


Source: Kitco website - www.kitco.com/connecting.html

Trade Tech's Uranium Price Indicators

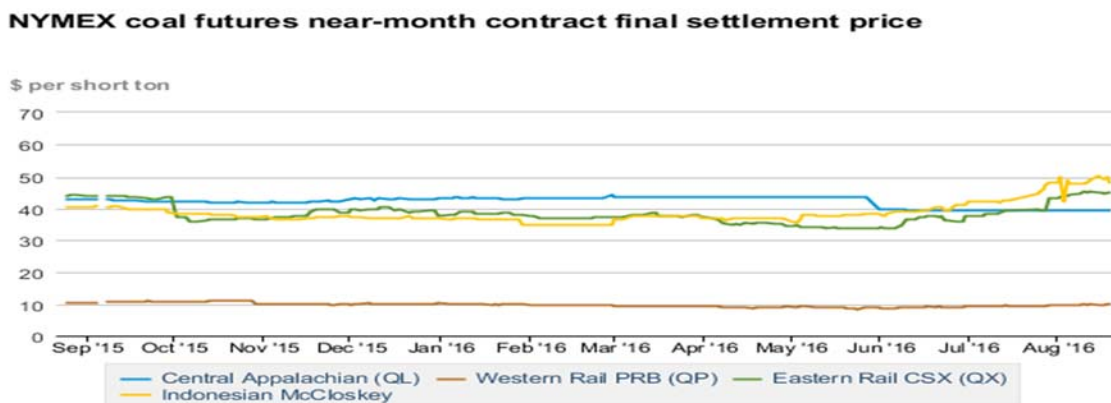


Source: Trade Tech, Uranium Info Website – www.uranium.info



Source: U.S. Army Corps of Engineers, Waterborne Commerce Statistics Center

NYMEX Coal Futures Near-month Contract Final Settlement Price



Source: The New York Mercantile Exchange (NYMEX), Daily Energy Bulletin.

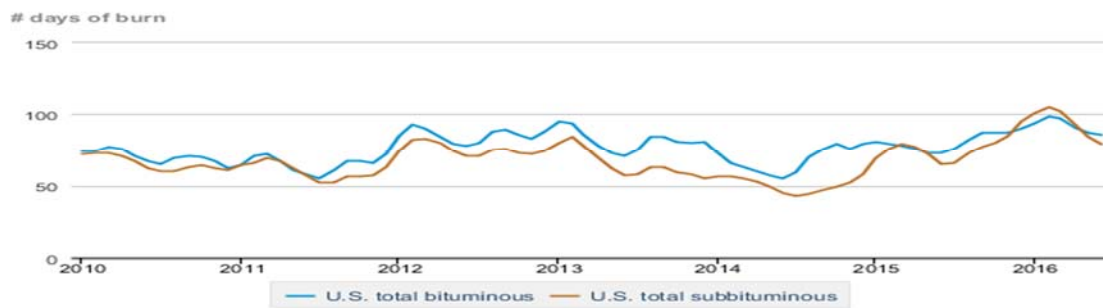
Source: Energy Information Administration, based on NYMEX and Daily Energy Bulletin data

Average weekly coal commodity spot prices dollars per short ton

	Week ending					Week ago
	07/15/16	07/29/16	08/05/16	08/12/16	08/19/16	change
Central Appalachia 12,500 Btu, 1.2 SO ₂	\$41.10	\$41.10	\$41.10	\$41.10	\$41.10	\$0.00
Northern Appalachia 13,000 Btu, < 3.0 SO ₂	\$43.35	\$43.35	\$42.35	\$42.35	\$42.35	\$0.00
Illinois Basin 11,800 Btu, 5.0 SO ₂	\$32.00	\$32.00	\$32.00	\$32.00	\$32.00	\$0.00
Powder River Basin 8,800 Btu, 0.8 SO ₂	\$8.70	\$8.70	\$8.70	\$8.70	\$8.70	\$0.00
Uinta Basin 11,700 Btu, 0.8 SO ₂	\$39.40	\$39.40	\$39.40	\$39.40	\$39.40	\$0.00

Source: Energy Information Administration (with permission from SNL), *Coal News and Markets Report*

Days of burn by non-lignite coal rank, January 2009 - June 2016



Source: U.S. Energy Information Administration

Source: Energy Information Administration, *Electricity Monthly Update Report*

Temperature -- heating & cooling degree days (week ending Aug 11)

Region	HDD Current	HDD deviation from:		CDD Current	CDD deviation from:	
		normal	last year		normal	last year
New England	0	-3	-3	70	28	47
Middle Atlantic	0	-3	-2	77	22	36
E N Central	0	-4	-3	74	21	33
W N Central	1	-2	1	67	2	3
South Atlantic	0	0	0	108	14	13
E S Central	0	0	0	111	19	16
W S Central	0	0	0	146	22	-7
Mountain	0	-3	0	81	9	3
Pacific	1	-1	1	45	-1	-2
United States	0	-2	-1	87	15	16

Note: HDD = heating degree-day; CDD = cooling degree-day

Source: National Oceanic and Atmospheric Administration

Source: Energy Information Administration

USGS Production of Selected Mineral Commodities	2016 Year to Date - 1st Quarter	2015 Year to Date - 1st Quarter	Percent Change
Aluminum, secondary (000 Mt.)	226.0	191.0	18%
Cement (Mil. Mt.)	17.0	14.9	14%
Copper (000 Mt.)	355.0	336.0	6%
Gold (Mt.)	49.7	48.2	3%
Gypsum (Mil. Mt.)	4.1	3.4	21%
Iron Ore (Mil. Mt.)	9.0	13.0	-31%
Lead (000 Mt.)	82.6	93.8	-12%
Molybdenum (000 Mt.)	6.4	13.8	-54%
Phosphate rock (Mil. Mt.)	6.1	6.2	-2%
Sand & gravel, construction (Mil. Mt.)	173.0	157.0	10%
Silver (Mt.)	277.0	283.0	-2%
Soda ash (Mil. Mt.)	2.9	2.9	0%
Stone, crushed (Mil. Mt.)	270.0	224.0	21%
Zinc (000 Mt.)	166.0	203.0	-18%

Source: U.S. Geological Survey, Mineral Industry Surveys. Percent change based on USGS rounded numbers. 2016 data are preliminary estimates.

Natural gas spot prices (Henry Hub)



eia Source: Natural Gas Intelligence

Source: Energy Information Administration, *Natural Gas Weekly Update*

EIA Coal Stocks and Average Number of Days of Burn (Power Sector)

Coal stocks and average number of days of burn for non-lignite coal by region (electric power sector)

Zone	Coal	June 2016		June 2015		% Change of Stocks	May 2016		% Change of Stocks
		Stocks (1000 tons)	Days of Burn	Stocks (1000 tons)	Days of Burn		Stocks (1000 tons)	Days of Burn	
Northeast	Bituminous	7,043	119	6,937	99	1.5%	7,439	115	-5.3%
	Subbituminous	171	157	806	229	-78.8%	171	184	0.0%
South	Bituminous	35,292	82	33,382	71	5.7%	37,894	84	-6.9%
	Subbituminous	7,180	74	6,457	68	11.2%	7,959	82	-9.8%
Midwest	Bituminous	18,434	91	15,778	73	16.8%	18,853	92	-2.2%
	Subbituminous	45,364	76	38,839	58	16.8%	47,382	80	-4.3%
West	Bituminous	5,862	75	5,583	69	5.0%	5,861	76	0.0%
	Subbituminous	36,200	83	32,908	74	10.0%	39,169	90	-7.6%
U.S. Total	Bituminous	66,631	86	61,680	73	8.0%	70,047	87	-4.9%
	Subbituminous	88,915	79	79,011	65	12.5%	94,681	84	-6.1%

Source: Energy Information Administration, *Electricity Monthly Update*

EIA Working Natural Gas Underground Storage

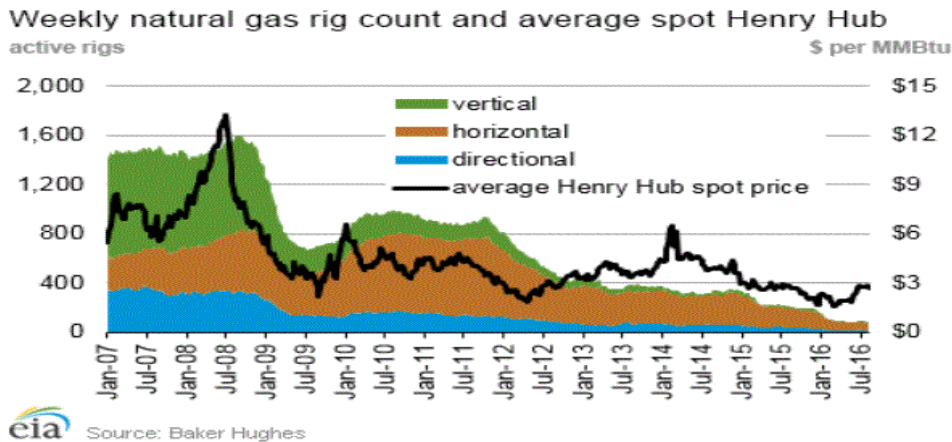
Working gas in underground storage

Region	Stocks billion cubic feet (Bcf)		
	2016-08-12	2016-08-05	change
East	763	746	17
Midwest	861	845	16
Mountain	217	215	2
Pacific	313	314	-1
South Central	1,185	1,197	-12
Total	3,339	3,317	22

Source: U.S. Energy Information Administration

Source: Energy Information Administration, *Natural Gas Weekly Update*

EIA Natural Gas Rig Count and Price Trend



Source: Energy Information Administration, *Natural Gas Weekly Update*

EIA Oil and Natural Gas Rig Productivity

Region	New-well oil production per rig barrels/day			New-well gas production per rig thousand cubic feet/day		
	August 2016	September 2016	change	August 2016	September 2016	change
Bakken	857	875	18	1,149	1,189	40
Eagle Ford	1,076	1,089	13	3,194	3,232	38
Haynesville	31	31	-	5,573	5,639	66
Marcellus	69	69	-	11,353	11,503	150
Niobrara	961	982	21	3,004	3,080	76
Permian	520	522	2	895	895	-
Utica	351	360	9	7,547	7,659	112
Rig-weighted average	560	578	18	2,859	2,767	(92)

Source: Energy Information Administration, *Drilling Productivity Report*