

---

**National Mining Association**

# Weekly Statistical Summary

September 2, 2016 Edition  
(Data for Week Ending August 27, 2016)

Prepared by  
National Mining Association



Suite 500 East, 101 Constitution Avenue, NW  
Washington, DC, 20001  
Phone (202) 463-2600  
Visit us at <http://www.nma.org>

# NMA Weekly Statistical Summary

Vol. 54, No. 35  
Dated 09/02/16

## PRODUCTION, CONSUMPTION & TRADE

	Week Ended			* Cumulative Jan 1 to		
	08/27/16	08/29/15	% Chng	08/27/16	08/27/15	% Chng
<b>EIA Coal Production (000 Tons):</b>						
Week Ended/Year to Date	16,276	19,088	-14.7%	453,871	601,488	-24.5%
52 Weeks Ended	744,016	946,269	-21.4%			
AAR Coal Rail Cars Loaded:	91,469	108,709	-15.9%	2,523,567	3,453,061	-26.9%
<b>Coal Production Month Ended - July</b>						
Coal Production	<b>Jul 16/15</b>		<b>% Chng</b>	<b>Jan - Jul 16/15</b>		<b>% Chng</b>
Month Ended - July	65,088	76,618	-15.0%	383,902	527,936	-27.3%

## DOC Bituminous Coal Trade (000 Tons)

Exports:	June 16/15			Jan - June 16/15		
			% Chng			% Chng
Metallurgical	3,423	3,952	-13.4%	20,215	26,246	-23.0%
Steam *	1,960	1,796	9.1%	7,863	15,279	-48.5%
Lignite	6	6	0.0%	34	31	9.7%
Anthracite	46	38	21.1%	288	210	37.1%
<b>Total</b>	<b>5,435</b>	<b>5,792</b>	<b>-6.2%</b>	<b>28,400</b>	<b>41,766</b>	<b>-32.0%</b>
Imports:	641	842	-23.9%	4,989	5,649	-11.7%

	Week Ended			Cumulative Jan 1 to		
	08/27/16	08/29/15	% Chng	08/27/16	08/29/15	% Chng
EI Electric Total Output (Mil. Kwh)	86,862	83,468	4.1%	2,748,220	2,770,233	-0.8%
EI Coal Region Output (Mil. Kwh)	75,295	71,436	5.4%	2,368,843	2,389,271	-0.9%
AISI Raw Steel Output (000 Tons)	1,642	1,726	-4.9%	59,263	59,979	-1.2%

## EIA (SNL ENERGY) AVERAGE COAL SPOT PRICES Dollars Per Short Ton

Average Coal Spot Prices (\$/Short Ton)	Week Ending			Natural Gas Spot Prices (\$/MMBtu)	
	08/26/16	08/19/16	% Chng	Wed.	08/24/16
Central App, 12,500 Btu, 1.2 SO <sub>2</sub>	\$41.10	\$41.10	0.0%	Henry Hub	2.77
Northern App, 13,000 Btu, < 3.0 SO <sub>2</sub>	42.35	42.35	0.0%	New York	1.81
Illinois Basin, 11,800, 5.0 SO <sub>2</sub>	32.00	32.00	0.0%	Chicago	2.76
Powder River Basin, 8,800 Btu 0.8 SO <sub>2</sub>	8.70	8.70	0.0%	Cal.Comp.Avg.	2.89
Uinta Basin, 11,700 Btu, 0.8 SO <sub>2</sub>	39.40	39.40	0.0%		

Coal exports and Imports are "as reported" (not revised); \*Steam excludes lignite & anthracite. All data in this report are preliminary and subject to revision.

Sources: Energy Information Administration; Edison Electric Institute; American Iron & Steel Institute; Association of American Railroads; Dept. of Commerce; SNL Energy; NGI's Daily Gas Price Index



## EIA Estimated Weekly U.S. Coal Production Overview

Coal-Producing Region & State (thousand short tons)	Week Ended			Year to Date			52 Weeks Ended		
	8/27/2016 (week 35)	8/20/2016 (week 34)	8/29/2015 (week 35)	8/27/2016	8/27/2015	% Change	8/27/2016	8/29/2015	% Change
Alabama	180	189	263	6,031	9,623	-37.3	9,528	15,174	-37.2
Alaska	21	24	21	706	771	-8.4	1,107	1,225	-9.6
Arizona	114	109	142	3,430	4,773	-28.1	5,422	7,612	-28.8
Arkansas	2	1	2	41	64	-36.8	67	107	-37.4
Colorado	292	259	425	7,682	13,655	-43.7	12,787	21,625	-40.9
Illinois	928	925	1,127	28,377	39,041	-27.3	45,248	59,752	-24.3
Indiana	601	580	724	17,936	23,683	-24.3	28,346	37,122	-23.6
Kansas	5	4	3	102	129	-20.6	172	182	-5.5
<b>Kentucky Total</b>	<b>1,003</b>	<b>972</b>	<b>1,271</b>	<b>29,300</b>	<b>42,608</b>	<b>-31.2</b>	<b>47,751</b>	<b>67,851</b>	<b>-29.6</b>
Eastern (KY)	428	414	570	12,350	19,697	-37.3	20,584	31,646	-35.0
Western (KY)	575	558	701	16,950	22,910	-26.0	27,167	36,205	-25.0
Louisiana	79	70	99	1,896	2,216	-14.4	3,092	3,715	-16.8
Maryland	31	32	35	1,033	1,323	-21.9	1,615	1,986	-18.7
Mississippi	64	58	74	1,841	2,178	-15.5	2,785	3,289	-15.3
Missouri	2	2	3	79	107	-26.0	110	216	-49.1
Montana	761	738	935	20,493	27,997	-26.8	34,098	45,031	-24.3
New Mexico	452	447	451	11,573	12,678	-8.7	18,447	19,525	-5.5
North Dakota	604	589	612	17,413	19,018	-8.4	27,025	28,992	-6.8
Ohio	286	280	353	8,824	11,712	-24.7	14,054	18,603	-24.5
Oklahoma	14	14	15	418	530	-21.1	664	814	-18.4
<b>Pennsylvania Total</b>	<b>944</b>	<b>892</b>	<b>1,170</b>	<b>26,244</b>	<b>34,736</b>	<b>-24.4</b>	<b>42,349</b>	<b>55,572</b>	<b>-23.8</b>
Anthracite (PA)	48	47	48	1,253	1,375	-8.8	2,007	2,086	-3.8
Bituminous (PA)	896	844	1,121	24,990	33,362	-25.1	40,342	53,486	-24.6
Tennessee	20	19	20	540	591	-8.7	840	915	-8.2
Texas	801	790	880	21,774	22,408	-2.8	35,037	37,738	-7.2
Utah	266	266	306	8,148	9,580	-14.9	12,901	15,631	-17.5
Virginia	255	261	274	7,710	9,503	-18.9	12,217	14,484	-15.7
<b>West Virginia Total</b>	<b>1,564</b>	<b>1,625</b>	<b>1,879</b>	<b>47,834</b>	<b>65,492</b>	<b>-27.0</b>	<b>77,449</b>	<b>102,053</b>	<b>-24.1</b>
Northern (WV)	859	905	919	25,608	31,549	-18.8	41,587	48,112	-13.6
Southern (WV)	705	719	960	22,226	33,943	-34.5	35,862	53,941	-33.5
Wyoming	6,987	6,804	8,003	184,448	247,073	-25.3	310,907	387,054	-19.7
<b>Appalachian Total</b>	<b>3,708</b>	<b>3,712</b>	<b>4,563</b>	<b>110,566</b>	<b>152,678</b>	<b>-27.6</b>	<b>178,635</b>	<b>240,434</b>	<b>-25.7</b>
<b>Interior Total</b>	<b>3,070</b>	<b>3,002</b>	<b>3,629</b>	<b>89,413</b>	<b>113,265</b>	<b>-21.1</b>	<b>142,687</b>	<b>179,140</b>	<b>-20.3</b>
<b>Western Total</b>	<b>9,499</b>	<b>9,237</b>	<b>10,895</b>	<b>253,891</b>	<b>335,544</b>	<b>-24.3</b>	<b>422,694</b>	<b>526,696</b>	<b>-19.7</b>
<b>East of Mississippi River</b>	<b>5,875</b>	<b>5,833</b>	<b>7,190</b>	<b>175,670</b>	<b>240,490</b>	<b>-27.0</b>	<b>282,181</b>	<b>376,801</b>	<b>-25.1</b>
<b>West of Mississippi River</b>	<b>10,401</b>	<b>10,118</b>	<b>11,898</b>	<b>278,201</b>	<b>360,997</b>	<b>-22.9</b>	<b>461,835</b>	<b>569,468</b>	<b>-18.9</b>
Bituminous and Lignite	16,228	15,904	19,039	452,617	600,113	-24.6	742,009	944,183	-21.4
Anthracite	48	47	48	1,253	1,375	-8.8	2,007	2,086	-3.8
<b>U.S. Total</b>	<b>16,276</b>	<b>15,951</b>	<b>19,088</b>	<b>453,871</b>	<b>601,488</b>	<b>-24.5</b>	<b>744,016</b>	<b>946,269</b>	<b>-21.4</b>
Railroad Cars Loaded	91,469	89,599	108,709	2,523,567	3,453,061	-26.9	4,193,901	5,470,604	-23.3

Source: Energy Information Administration

Prepared by EEI's Business Information Group



## WEEKLY ELECTRIC OUTPUT

Volume 84 No. 35

### OUTPUT FOR WEEK ENDED - Aug 27, 2016

Aug 31, 2016

The net available amount of electric energy distributed by the Total Electric Utility Industry\* for the week ended Saturday, **Aug 27, 2016** was **86,862** gigawatthours (GWh), according to the Edison Electric Institute. This is equivalent to **178** on the weekly electric output index.

### WEEKLY ELECTRIC OUTPUT BY GEOGRAPHIC DIVISION

(48 CONTIGUOUS STATES)

	Week Ended August 27		52 Weeks Ended August 27	
	GWh Output	% Increase Over Corresponding Week of 2015	GWh Output	% Increase Over Corresponding Period of 2015
New England	2,752	2.7	123,941	-3.0
Mid-Atlantic	9,828	8.6	433,079	-3.3
Central Industrial	14,207	14.7	672,458	-1.3
West Central	6,718	8.6	329,666	-0.1
Southeast	22,917	9.2	1,015,528	-1.2
South Central	15,666	-3.3	705,557	-0.3
Rocky Mountain	5,959	-10.0	278,605	1.3
Pacific Northwest	2,686	4.5	152,402	0.2
Pacific Southwest	6,129	-9.6	286,139	1.0
Total United States	86,862	4.1	3,997,375	-0.9

### WEEKLY ELECTRIC OUTPUT IN PREVIOUS WEEKS--GWh

Week Ended	2016	Week Ended	2015	% Inc. (16/15)	52 Weeks Ended	2016	% Inc. (16/15)
Aug 06	92,495	Aug 08	88,711	4.3	Aug 06	3,985,712	-1.1
Aug 13	93,832	Aug 15	88,044	6.6	Aug 13	3,991,500	-1.1
Aug 20	90,103	Aug 22	87,622	2.8	Aug 20	3,993,980	-1.1
Aug 27	86,862	Aug 29	83,468	4.1	Aug 27	3,997,375	-0.9
<b>Aug 27</b>	<b>2,748,220</b>	<b>Aug 29</b>	<b>2,770,233</b>	<b>-0.8</b>	<b>YEAR TO DATE, FIRST 35 WEEKS</b>		

### WEEKLY ELECTRIC OUTPUT INDEX--TOTAL U.S.\*

SEASONALLY ADJUSTED 1982 = 100

Week Ended	2016	Week Ended	2015	Week Ended	2014
Aug 06	172	Aug 08	210	Aug 09	165
Aug 13	189	Aug 15	203	Aug 16	168
Aug 20	181	Aug 22	207	Aug 23	176
Aug 27	178	Aug 29	201	Aug 30	179

\* Excludes Alaska and Hawaii.

+ Includes investor-owned companies, cooperatives and government-owned utilities.

Copyright © 2016 Edison Electric Institute. All rights reserved.

**EEl WEEKLY ELECTRIC OUTPUT BY GEOGRAPHIC DIVISION**  
**(48 CONTIGUOUS STATES)**

	Week Ended			NMA CUMULATIVE JANUARY WEEK ONE TO			52 Weeks Ended		
	27-Aug	29-Aug	% Increase Over Corresponding Week of 2015	27-Aug	29-Aug	% Increase Over Corresponding Week of 2015	27-Aug	29-Aug	% Increase Over Corresponding Week of 2015
	2016	2015		2016	2015		2016	2015	
	GWh	GWh		GWh	GWh		GWh	GWh	
	Output	Output		Output	Output		Output	Output	
<b>New England</b>	2,752	2,680	2.7%	<b>84,861</b>	<b>87,813</b>	<b>-3.4%</b>	123,941	127,820	-3.0%
<b>Mid-Atlantic</b>	9,828	9,054	8.5%	<b>298,891</b>	<b>310,171</b>	<b>-3.6%</b>	433,079	447,960	-3.3%
<b>Central Industrial</b>	14,207	12,382	14.7%	<b>464,857</b>	<b>466,714</b>	<b>-0.4%</b>	672,458	681,119	-1.3%
<b>West Central</b>	6,718	6,186	8.6%	<b>225,923</b>	<b>226,091</b>	<b>-0.1%</b>	329,666	330,092	-0.1%
<b>Southeast</b>	22,917	20,988	9.2%	<b>705,515</b>	<b>710,757</b>	<b>-0.7%</b>	1,015,528	1,028,350	-1.2%
<b>South Central</b>	15,666	16,205	-3.3%	<b>487,602</b>	<b>491,271</b>	<b>-0.7%</b>	705,557	707,895	-0.3%
<b>Rocky Mountain</b>	5,959	6,621	-10.0%	<b>186,055</b>	<b>184,267</b>	<b>1.0%</b>	278,605	274,922	1.3%
<b>Pacific Northwest</b>	2,686	2,570	4.5%	<b>102,413</b>	<b>102,160</b>	<b>0.2%</b>	152,402	152,141	0.2%
<b>Pacific Southwest</b>	6,129	6,782	-9.6%	<b>192,103</b>	<b>190,991</b>	<b>0.6%</b>	286,139	283,222	1.0%
<b>Total United States <sup>1/</sup></b>	<u>86,862</u>	<u>83,468</u>	4.1%	<u><b>2,748,220</b></u>	<u><b>2,770,235</b></u>	<b>-0.8%</b>	<u>3,997,375</u>	<u>4,033,521</u>	-0.9%
<b>Coal Regions Only <sup>2/</sup></b>	75,295	71,436	5.4%	<b>2,368,843</b>	<b>2,389,271</b>	<b>-0.9%</b>	3,434,893	3,470,338	-1.0%

Notes: EEI output data are an estimate of electricity load made available for distribution derived as weekly net generation + purchases from non-utilities + net imports - exports - sales for resale. It is not meant to be a measure of electricity generation for the U.S. EEI survey data represent the majority of national distribution (large utilities, large government power projects, some independent and large municipal power projects). The remaining segment of the industry (smaller producers) is estimated. Non-utility generation is captured via direct sales to utilities.

<sup>1/</sup> Excludes Alaska and Hawaii

<sup>2/</sup> Excludes New England and Pacific regions

SOURCE: Edison Electric Institute (EEI), *Weekly Electric Output Report*.

AMERICAN IRON AND STEEL INSTITUTE  
 25 Massachusetts Avenue, NW, Suite 800  
 Washington, D.C. 20001

August 29, 2016

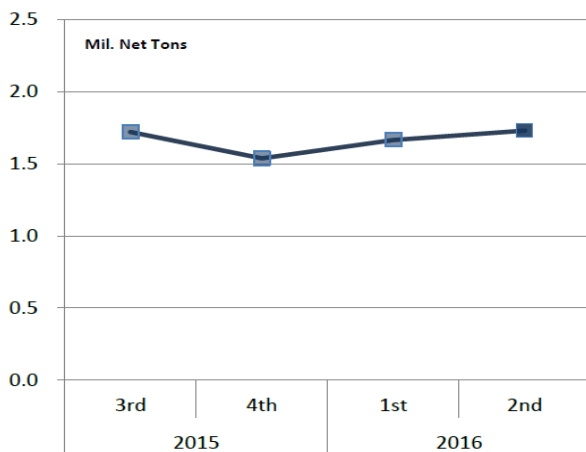
**ESTIMATED WEEKLY RAW STEEL \* PRODUCTION**

<u>Period</u>	<u>Thousand Net Tons</u>	<u>Percent Change from Previous Period</u>	<u>Percent Capability Utilization**</u>	<u>Production by District</u>		
				<u>Week Ending Aug. 27</u>	<u>Week Ending Aug. 20</u>	
<b><u>Week Ending</u></b>				North East	204	205
				Great Lakes	652	651
August 27, 2016	1,642	-0.8	70.2	Midwest	159	161
August 27, 2015	1,726	-4.9	72.2	Southern	553	568
August 20, 2016	1,655	-1.8	70.8	Western	74	70
				<b>Total</b>	<b>1,642</b>	<b>1,655</b>
<b><u>Year-to-Date +</u></b>						
August 27, 2016	59,263	-1.2	72.4			
August 27, 2015	59,979	-	72.3			

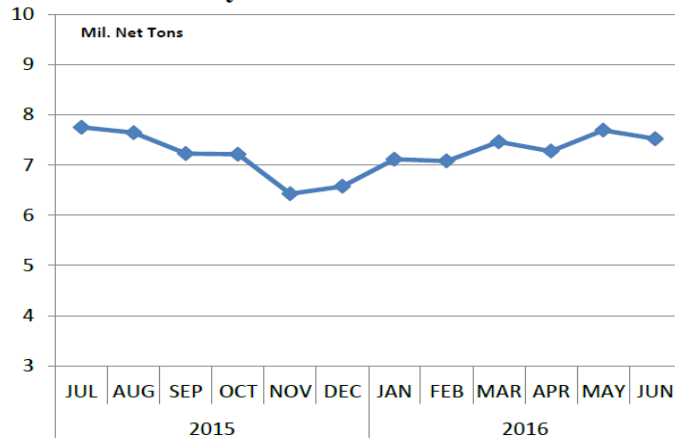
\*Raw steel production tonnage included in this report is estimated based on a sampling of steel producers (50% of domestic producers). Therefore, this report should be used primarily to assess production trends. The AISI production report "AIS 7," produced monthly and available by subscription, provides a more accurate summary of steel production based on data supplied by companies representing approximately 75% of U.S. production capacity plus includes revisions for previous months.

NOTE: Capacity for the third quarter 2016 is approximately 30.7 million net tons vs. 31.4 million net tons for the same period last year, and 30.4 million tons for the second quarter of 2016.

**Average Weekly Raw Steel Production**



**Monthly Raw Steel Production**



\*Steel in the first solid state after melting suitable for further processing or sale, including ingots, steel for castings and strand or pressure cast blooms, slabs or other product forms. \*\* Based on tonnage capability to produce raw steel for a sustained full order book.



Source: Kitco website - [www.kitco.com/connecting.html](http://www.kitco.com/connecting.html)

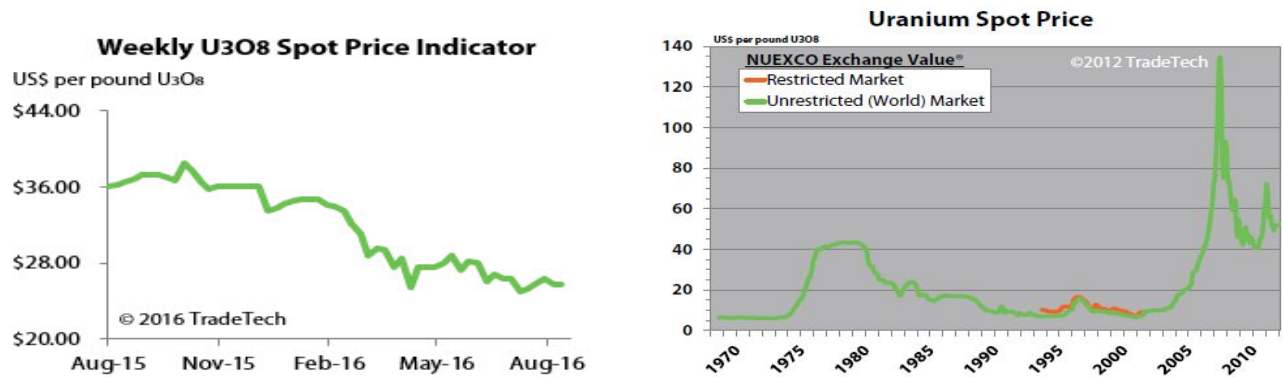


Source: Kitco website - [www.kitco.com/connecting.html](http://www.kitco.com/connecting.html)

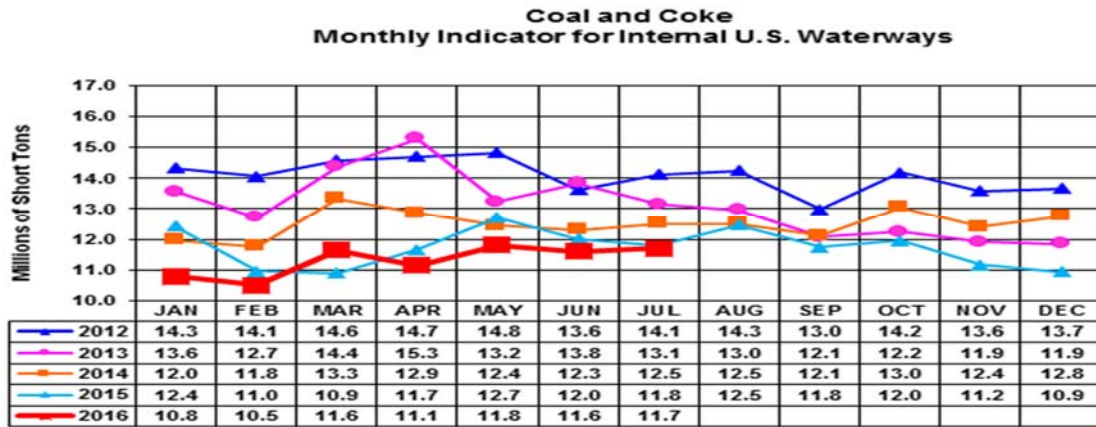


Source: Kitco website - [www.kitco.com/connecting.html](http://www.kitco.com/connecting.html)

### Trade Tech's Uranium Price Indicators

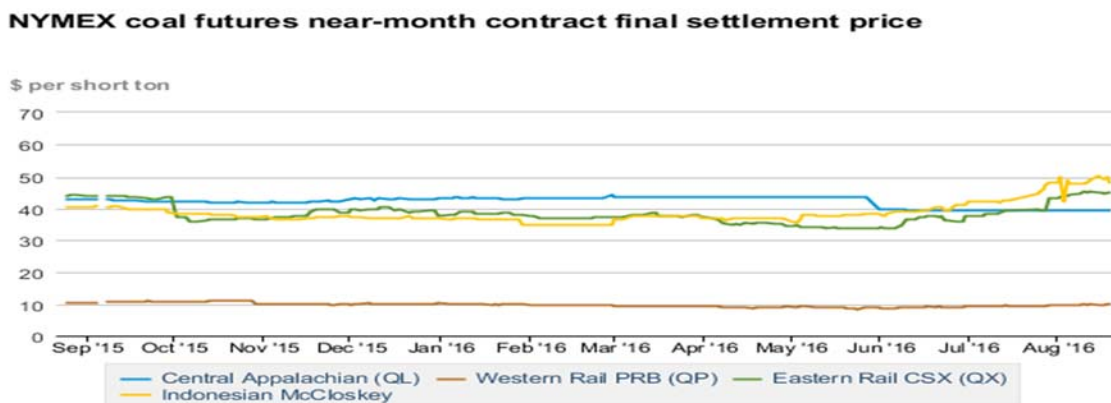


Source: Trade Tech, Uranium Info Website – [www.uranium.info](http://www.uranium.info)



Source: U.S. Army Corps of Engineers, Waterborne Commerce Statistics Center

### NYMEX Coal Futures Near-month Contract Final Settlement Price



Source: The New York Mercantile Exchange (NYMEX), Daily Energy Bulletin.

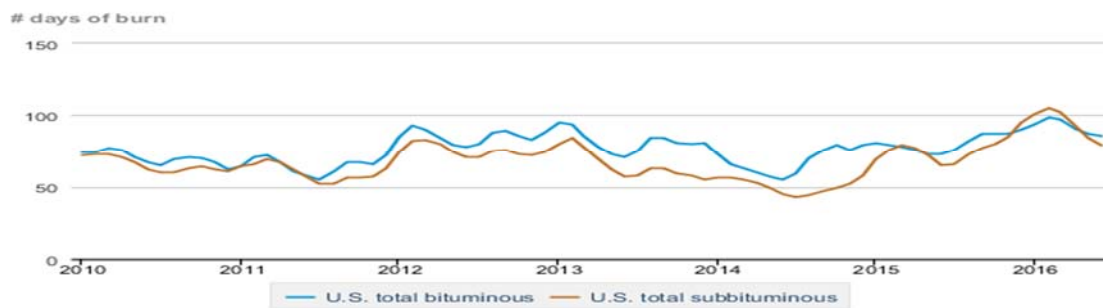
Source: Energy Information Administration, based on NYMEX and Daily Energy Bulletin data

### Average weekly coal commodity spot prices dollars per short ton

	Week ending					Week ago
	07/29/16	08/05/16	08/12/16	08/19/16	08/26/16	change
Central Appalachia 12,500 Btu, 1.2 SO <sub>2</sub>	\$41.10	\$41.10	\$41.10	\$41.10	\$41.10	\$0.00
Northern Appalachia 13,000 Btu, < 3.0 SO <sub>2</sub>	\$43.35	\$42.35	\$42.35	\$42.35	\$42.35	\$0.00
Illinois Basin 11,800 Btu, 5.0 SO <sub>2</sub>	\$32.00	\$32.00	\$32.00	\$32.00	\$32.00	\$0.00
Powder River Basin 8,800 Btu, 0.8 SO <sub>2</sub>	\$8.70	\$8.70	\$8.70	\$8.70	\$8.70	\$0.00
Uinta Basin 11,700 Btu, 0.8 SO <sub>2</sub>	\$39.40	\$39.40	\$39.40	\$39.40	\$39.40	\$0.00

Source: Energy Information Administration (with permission from SNL), *Coal News and Markets Report*

### Days of burn by non-lignite coal rank, January 2009 - June 2016



Source: U.S. Energy Information Administration

Source: Energy Information Administration, *Electricity Monthly Update Report*

### Temperature -- heating & cooling degree days (week ending Aug 18)

Region	HDD Current	HDD deviation from:		CDD Current	CDD deviation from:	
		normal	last year		normal	last year
New England	0	-3	0	83	49	21
Middle Atlantic	0	-3	-1	101	52	30
E N Central	0	-5	-1	72	26	8
W N Central	0	-5	-7	61	1	4
South Atlantic	0	0	0	124	34	29
E S Central	0	0	0	104	17	24
W S Central	0	0	0	109	-13	-18
Mountain	0	-6	-5	88	18	-4
Pacific	0	-4	-1	77	33	1
United States	0	-3	-1	94	26	12

Note: HDD = heating degree-day; CDD = cooling degree-day

Source: National Oceanic and Atmospheric Administration

Source: Energy Information Administration

USGS Production of Selected Mineral Commodities	2016 Year to Date - 1st Quarter	2015 Year to Date - 1st Quarter	Percent Change
Aluminum, secondary (000 Mt.)	226.0	191.0	18%
Cement (Mil. Mt.)	17.0	14.9	14%
Copper (000 Mt.)	355.0	336.0	6%
Gold (Mt.)	49.7	48.2	3%
Gypsum (Mil. Mt.)	4.1	3.4	21%
Iron Ore (Mil. Mt.)	9.0	13.0	-31%
Lead (000 Mt.)	82.6	93.8	-12%
Molybdenum (000 Mt.)	6.4	13.8	-54%
Phosphate rock (Mil. Mt.)	6.1	6.2	-2%
Sand & gravel, construction (Mil. Mt.)	173.0	157.0	10%
Silver (Mt.)	277.0	283.0	-2%
Soda ash (Mil. Mt.)	2.9	2.9	0%
Stone, crushed (Mil. Mt.)	270.0	224.0	21%
Zinc (000 Mt.)	166.0	203.0	-18%

Source: U.S. Geological Survey, Mineral Industry Surveys. Percent change based on USGS rounded numbers. 2016 data are preliminary estimates.

### Natural gas spot prices (Henry Hub)



eia Source: Natural Gas Intelligence

Source: Energy Information Administration, *Natural Gas Weekly Update*

### EIA Coal Stocks and Average Number of Days of Burn (Power Sector)

Coal stocks and average number of days of burn for non-lignite coal by region (electric power sector)

Zone	Coal	June 2016		June 2015		% Change of Stocks	May 2016		% Change of Stocks
		Stocks (1000 tons)	Days of Burn	Stocks (1000 tons)	Days of Burn		Stocks (1000 tons)	Days of Burn	
Northeast	Bituminous	7,043	119	6,937	99	1.5%	7,439	115	-5.3%
	Subbituminous	171	157	806	229	-78.8%	171	184	0.0%
South	Bituminous	35,292	82	33,382	71	5.7%	37,894	84	-6.9%
	Subbituminous	7,180	74	6,457	68	11.2%	7,959	82	-9.8%
Midwest	Bituminous	18,434	91	15,778	73	16.8%	18,853	92	-2.2%
	Subbituminous	45,364	76	38,839	58	16.8%	47,382	80	-4.3%
West	Bituminous	5,862	75	5,583	69	5.0%	5,861	76	0.0%
	Subbituminous	36,200	83	32,908	74	10.0%	39,169	90	-7.6%
U.S. Total	Bituminous	66,631	86	61,680	73	8.0%	70,047	87	-4.9%
	Subbituminous	88,915	79	79,011	65	12.5%	94,681	84	-6.1%

Source: Energy Information Administration, *Electricity Monthly Update*

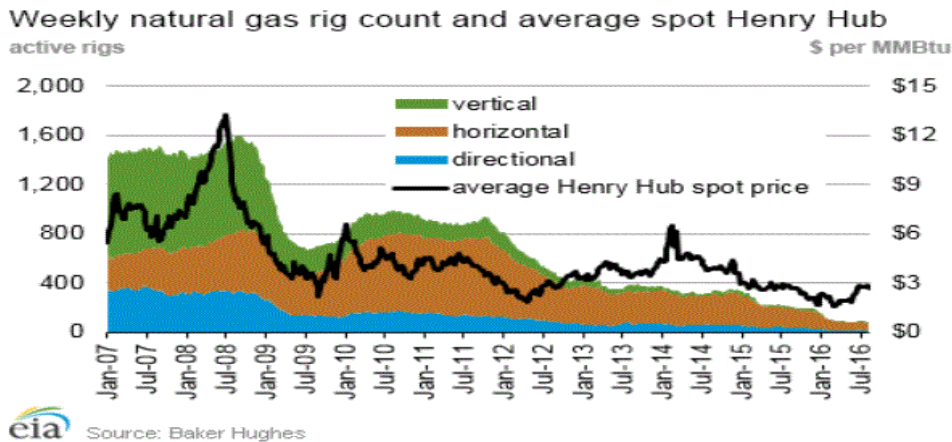
### EIA Working Natural Gas Underground Storage

#### Working gas in underground storage

Region	Stocks billion cubic feet (Bcf)		
	2016-08-19	2016-08-12	change
East	775	763	12
Midwest	875	861	14
Mountain	219	217	2
Pacific	310	313	-3
South Central	1,171	1,185	-14
Total	3,350	3,339	11

Source: Energy Information Administration, *Natural Gas Weekly Update*

### EIA Natural Gas Rig Count and Price Trend



Source: Energy Information Administration, *Natural Gas Weekly Update*

### EIA Oil and Natural Gas Rig Productivity

Region	New-well oil production per rig barrels/day			New-well gas production per rig thousand cubic feet/day		
	August 2016	September 2016	change	August 2016	September 2016	change
Bakken	857	875	18	1,149	1,189	40
Eagle Ford	1,076	1,089	13	3,194	3,232	38
Haynesville	31	31	-	5,573	5,639	66
Marcellus	69	69	-	11,353	11,503	150
Niobrara	961	982	21	3,004	3,080	76
Permian	520	522	2	895	895	-
Utica	351	360	9	7,547	7,659	112
Rig-weighted average	560	578	18	2,859	2,767	(92)

Source: Energy Information Administration, *Drilling Productivity Report*