
National Mining Association

Weekly Statistical Summary

September 16, 2016 Edition
(Data for Week Ending August 10, 2016)

Prepared by
National Mining Association



Suite 500 East, 101 Constitution Avenue, NW
Washington, DC, 20001
Phone (202) 463-2600
Visit us at <http://www.nma.org>

NMA Weekly Statistical Summary

Vol. 54, No. 37
Dated 09/16/16

PRODUCTION, CONSUMPTION & TRADE

	Week Ended			* Cumulative Jan 1 to		
	09/10/16	09/12/15	% Chng	09/10/16	09/10/15	% Chng
EIA Coal Production (000 Tons):						
Week Ended/Year to Date	15,113	17,679	-14.5%	485,095	638,427	-24.0%
52 Weeks Ended	738,561	944,734	-21.8%			
AAR Coal Rail Cars Loaded:	87,058	103,405	-15.8%	2,701,200	3,665,384	-26.3%
Coal Production	Aug 16/15		% Chng	Jan - Aug 16/15		% Chng
Month Ended - August	71,258	82,682	-13.8%	455,160	611,962	-25.6%
DOC Bituminous Coal Trade (000 Tons)						
Exports:	July 16/15		% Chng	Jan - July 16/15		% Chng
Metallurgical	2,425	2,933	-17.3%	22,640	29,179	-22.4%
Steam *	844	2,178	-61.2%	8,707	17,456	-50.1%
Lignite	6	5	20.0%	40	36	11.1%
Anthracite	5	5	0.0%	293	215	36.3%
Total	3,280	5,121	-36.0%	31,680	46,886	-32.4%
Imports:	990	1,091	-9.3%	5,979	6,740	-11.3%
	Week Ended			Cumulative Jan 1 to		
	09/10/16	09/12/15	% Chng	09/10/16	09/12/15	% Chng
EEl Electric Total Output (Mil. Kwh)	85,369	84,944	0.5%	2,917,946	2,941,994	-0.8%
EEl Coal Region Output (Mil. Kwh)	74,651	72,855	2.5%	2,516,513	2,537,693	-0.8%
AISI Raw Steel Output (000 Tons)	1,626	1,687	-3.6%	62,545	63,375	-1.3%

EIA (SNL ENERGY) AVERAGE COAL SPOT PRICES Dollars Per Short Ton

Average Coal Spot Prices (\$/Short Ton)	Week Ending			Natural Gas Spot Prices (\$/MMBtu)	
	09/09/16	09/02/16	% Chng	Wed.	09/07/16
Central App, 12,500 Btu, 1.2 SO ₂	\$41.10	\$41.10	0.0%	Henry Hub	2.82
Northern App, 13,000 Btu, < 3.0 SO ₂	42.35	42.35	0.0%	New York	2.83
Illinois Basin, 11,800, 5.0 SO ₂	32.00	32.00	0.0%	Chicago	2.81
Powder River Basin, 8,800 Btu 0.8 SO ₂	8.70	8.70	0.0%	Cal.Comp.Avg.	2.84
Uinta Basin, 11,700 Btu, 0.8 SO ₂	39.40	39.40	0.0%		

Coal exports and Imports are "as reported" (not revised); *Steam excludes lignite & anthracite. All data in this report are preliminary and subject to revision.

Sources: Energy Information Administration; Edison Electric Institute; American Iron & Steel Institute; Association of American Railroads; Dept. of Commerce; SNL Energy; NGI's Daily Gas Price Index



NMA
THE AMERICAN RESOURCE

National Mining Association Web Site: [http:// www.nma.org](http://www.nma.org)

EIA Estimated Weekly U.S. Coal Production Overview

Coal-Producing Region & State (thousand short tons)	Week Ended			Year to Date			52 Weeks Ended		
	9/10/2016 (week 37)	9/3/2016 (week 36)	9/12/2015 (week 37)	9/10/2016	9/10/2015	% Change	9/10/2016	9/12/2015	% Change
Alabama	179	191	243	6,402	10,131	-36.8	9,394	15,030	-37.5
Alaska	22	23	19	751	810	-7.4	1,112	1,209	-8.0
Arizona	103	115	131	3,648	5,047	-27.7	5,367	7,561	-29.0
Arkansas	1	2	2	44	68	-36.2	66	108	-38.9
Colorado	246	285	394	8,213	14,478	-43.3	12,500	21,458	-41.7
Illinois	877	934	1,044	30,187	41,222	-26.8	44,893	59,697	-24.8
Indiana	549	597	671	19,082	25,084	-23.9	28,100	37,046	-24.1
Kansas	4	4	3	110	135	-18.5	173	188	-8.0
Kentucky Total	921	1,003	1,177	31,224	45,068	-30.7	47,232	67,321	-29.8
Eastern (KY)	392	429	528	13,172	20,800	-36.7	20,310	31,283	-35.1
Western (KY)	529	573	649	18,052	24,267	-25.6	26,922	36,038	-25.3
Louisiana	66	74	92	2,036	2,407	-15.4	3,042	3,745	-18.8
Maryland	30	32	33	1,095	1,392	-21.3	1,608	1,978	-18.7
Mississippi	55	62	69	1,959	2,322	-15.7	2,760	3,272	-15.6
Missouri	2	2	3	82	113	-27.1	107	204	-47.5
Montana	699	750	866	21,942	29,806	-26.4	33,751	45,051	-25.1
New Mexico	424	452	418	12,448	13,552	-8.1	18,455	19,569	-5.7
North Dakota	558	594	567	18,565	20,203	-8.1	27,002	29,135	-7.3
Ohio	265	284	327	9,373	12,395	-24.4	13,926	18,468	-24.6
Oklahoma	13	14	14	445	559	-20.3	663	811	-18.2
Pennsylvania Total	845	922	1,083	28,010	37,000	-24.3	41,867	55,528	-24.6
Anthracite (PA)	45	47	45	1,345	1,468	-8.4	2,006	2,100	-4.5
Bituminous (PA)	800	874	1,039	26,665	35,532	-25.0	39,861	53,428	-25.4
Tennessee	18	20	18	578	630	-8.2	841	920	-8.6
Texas	748	781	815	23,303	24,111	-3.4	34,875	37,624	-7.3
Utah	252	267	283	8,667	10,172	-14.8	12,833	15,547	-17.5
Virginia	248	259	254	8,217	10,034	-18.1	12,197	14,453	-15.6
West Virginia Total	1,539	1,602	1,740	50,975	69,127	-26.3	76,981	101,426	-24.1
Northern (WV)	858	874	851	27,340	33,327	-18.0	41,553	48,087	-13.6
Southern (WV)	682	728	889	23,635	35,800	-34.0	35,427	53,339	-33.6
Wyoming	6,446	6,845	7,413	197,739	262,561	-24.7	308,819	387,383	-20.3
Appalachian Total	3,517	3,739	4,226	117,822	161,509	-27.0	177,123	239,087	-25.9
Interior Total	2,844	3,042	3,362	95,300	120,289	-20.8	141,600	178,732	-20.8
Western Total	8,752	9,330	10,091	271,973	356,629	-23.7	419,839	526,914	-20.3
East of Mississippi River	5,527	5,905	6,659	187,102	254,404	-26.5	279,797	375,140	-25.4
West of Mississippi River	9,586	10,206	11,020	297,993	384,023	-22.4	458,764	569,593	-19.5
Bituminous and Lignite	15,068	16,064	17,634	483,749	636,959	-24.1	736,555	942,633	-21.9
Anthracite	45	47	45	1,345	1,468	-8.4	2,006	2,100	-4.5
U.S. Total	15,113	16,111	17,679	485,095	638,427	-24.0	738,561	944,734	-21.8
Railroad Cars Loaded	87,058	90,575	103,405	2,701,200	3,665,384	-26.3	4,159,921	5,456,947	-23.8

Source: Energy Information Administration

Prepared by EEI's Business Information Group

WEEKLY ELECTRIC OUTPUT

Volume 84 No. 37

OUTPUT FOR WEEK ENDED - Sep 10, 2016

Sep 14, 2016

The net available amount of electric energy distributed by the Total Electric Utility Industry+ for the week ended Saturday, **Sep 10, 2016** was **85,369** gigawatthours (GWh), according to the Edison Electric Institute. This is equivalent to **195** on the weekly electric output index.

WEEKLY ELECTRIC OUTPUT BY GEOGRAPHIC DIVISION

(48 CONTIGUOUS STATES)

	Week Ended September 10		52 Weeks Ended September 10	
	GWh Output	% Increase Over Corresponding Week of 2015	GWh Output	% Increase Over Corresponding Period of 2015
New England	2,561	-6.9	123,559	-3.5
Mid-Atlantic	9,583	-0.1	432,071	-3.8
Central Industrial	14,530	6.4	672,319	-1.6
West Central	6,810	-0.9	329,059	-0.7
Southeast	22,074	5.5	1,016,975	-1.1
South Central	15,995	1.4	705,520	-0.4
Rocky Mountain	5,659	-6.4	278,197	0.9
Pacific Northwest	2,435	-3.1	152,421	0.2
Pacific Southwest	5,722	-16.2	285,219	0.7
Total United States	85,369	0.5	3,995,340	-1.1

WEEKLY ELECTRIC OUTPUT IN PREVIOUS WEEKS--GWh

Week Ended	2016	Week Ended	2015	% Inc. (16/15)	52 Weeks Ended	2016	% Inc. (16/15)
Aug 20	90,103	Aug 22	87,622	2.8	Aug 20	3,993,980	-1.1
Aug 27	86,862	Aug 29	83,468	4.1	Aug 27	3,997,375	-0.9
Sep 03	84,357	Sep 05	86,817	-2.8	Sep 03	3,994,915	-1.0
Sep 10	85,369	Sep 12	84,944	0.5	Sep 10	3,995,340	-1.1
Sep 10	2,917,946	Sep 12	2,941,994	-0.8	YEAR TO DATE, FIRST 37 WEEKS		

WEEKLY ELECTRIC OUTPUT INDEX--TOTAL U.S.*

SEASONALLY ADJUSTED 1982 = 100

Week Ended	2016	Week Ended	2015	Week Ended	2014
Aug 20	181	Aug 22	207	Aug 23	176
Aug 27	178	Aug 29	201	Aug 30	179
Sep 03	180	Sep 05	217	Sep 06	185
Sep 10	195	Sep 12	200	Sep 13	177

* Excludes Alaska and Hawaii.

+ Includes investor-owned companies, cooperatives and government-owned utilities.

Copyright © 2016 Edison Electric Institute. All rights reserved.

**EEl WEEKLY ELECTRIC OUTPUT BY GEOGRAPHIC DIVISION
(48 CONTIGUOUS STATES)**

	Week Ended			NMA CUMULATIVE JANUARY WEEK ONE TO			52 Weeks Ended		
	10-Sep 2016 GWh Output	12-Sep 2015 GWh Output	% Increase Over Corresponding Week of 2015	10-Sep 2016 GWh Output	12-Sep 2015 GWh Output	% Increase Over Corresponding Week of 2015	10-Sep 2016 GWh Output	12-Sep 2015 GWh Output	% Increase Over Corresponding Week of 2015
New England	2,561	2,751	-6.9%	90,040	93,374	-3.6%	123,559	128,095	-3.5%
Mid-Atlantic	9,583	9,591	-0.1%	317,659	329,946	-3.7%	432,071	449,079	-3.8%
Central Industrial	14,530	13,650	6.4%	493,003	494,999	-0.4%	672,319	683,021	-1.6%
West Central	6,810	6,870	-0.9%	239,650	240,426	-0.3%	329,059	331,377	-0.7%
Southeast	22,074	20,932	5.5%	749,320	753,114	-0.5%	1,016,975	1,028,536	-1.1%
South Central	15,995	15,768	1.4%	519,467	523,173	-0.7%	705,520	708,424	-0.4%
Rocky Mountain	5,659	6,044	-6.4%	197,414	196,035	0.7%	278,197	275,681	0.9%
Pacific Northwest	2,435	2,512	-3.1%	107,378	107,106	0.3%	152,421	152,055	0.2%
Pacific Southwest	5,722	6,826	-16.2%	204,015	203,823	0.1%	285,219	283,359	0.7%
Total United States ^{1/}	<u>85,369</u>	<u>84,944</u>	0.5%	<u>2,917,946</u>	<u>2,941,996</u>	-0.8%	<u>3,995,340</u>	<u>4,039,627</u>	-1.1%
Coal Regions Only ^{2/}	74,651	72,855	2.5%	2,516,513	2,537,693	-0.8%	3,434,141	3,476,118	-1.2%

Notes: EEI output data are an estimate of electricity load made available for distribution derived as weekly net generation + purchases from non-utilities + net imports - exports - sales for resale. It is not meant to be a measure of electricity generation for the U.S. EEI survey data represent the majority of national distribution (large utilities, large government power projects, some independent and large municipal power projects). The remaining segment of the industry (smaller producers) is estimated. Non-utility generation is captured via direct sales to utilities.

^{1/} Excludes Alaska and Hawaii

^{2/} Excludes New England and Pacific regions

SOURCE: Edison Electric Institute (EEI), *Weekly Electric Output Report*.

AMERICAN IRON AND STEEL INSTITUTE
 25 Massachusetts Avenue, NW, Suite 800
 Washington, D.C. 20001

September 12, 2016

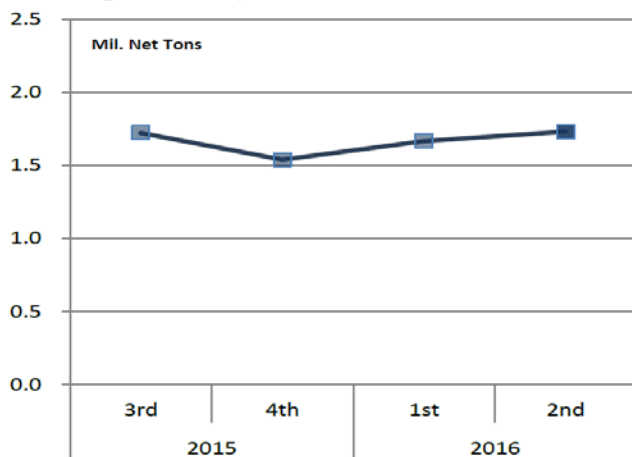
ESTIMATED WEEKLY RAW STEEL * PRODUCTION

<u>Period</u>	<u>Thousand Net Tons</u>	<u>Percent Change from Previous Period</u>	<u>Percent Capability Utilization**</u>	<u>Production by District</u>		
				<u>Week Ending</u>		
				<u>Sep. 10</u>	<u>Sep. 3</u>	
<u>Week Ending</u>				North East	202	205
				Great Lakes	653	648
September 10, 2016	1,626	-1.8	69.5	Midwest	158	161
September 10, 2015	1,687	-3.6	70.5	Southern	544	570
September 3, 2016	1,656	0.9	70.8	Western	69	72
				Total	1,626	1,656
<u>Year-to-Date +</u>						
September 10, 2016	62,545	-1.3	72.3			
September 10, 2015	63,375	-	72.1			

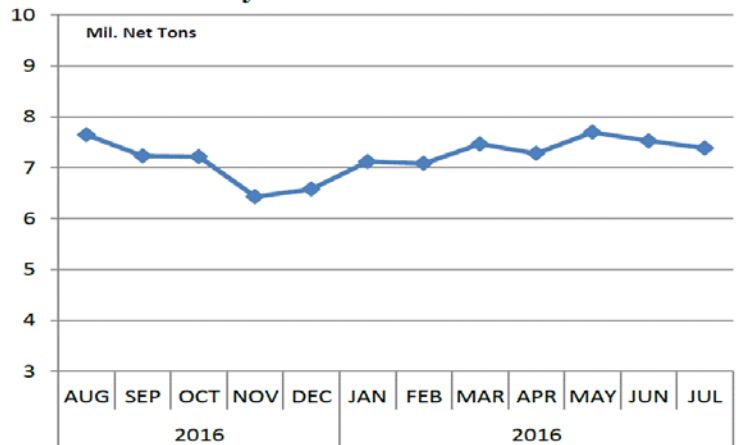
*Raw steel production tonnage included in this report is estimated based on a sampling of steel producers (50% of domestic producers). Therefore, this report should be used primarily to assess production trends. The AISI production report "AIS 7," produced monthly and available by subscription, provides a more accurate summary of steel production based on data supplied by companies representing approximately 75% of U.S. production capacity plus includes revisions for previous months.

NOTE: Capability for the third quarter 2016 is approximately 30.7 million net tons vs. 31.4 million net tons for the same period last year, and 30.4 million tons for the second quarter of 2016.

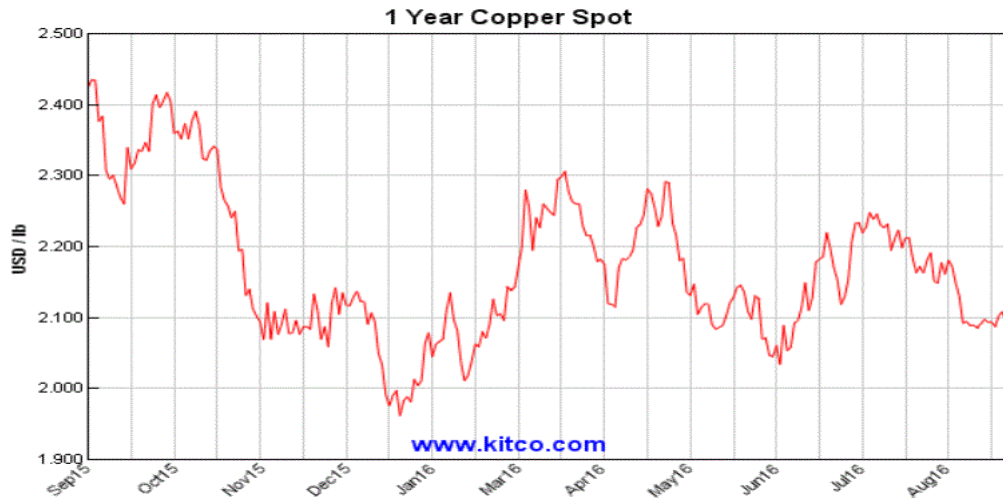
Average Weekly Raw Steel Production



Monthly Raw Steel Production



*Steel in the first solid state after melting suitable for further processing or sale, including ingots, steel for castings and strand or pressure cast blooms, slabs or other product forms. ** Based on tonnage capability to produce raw steel for a sustained full order book.



Source: Kitco website - www.kitco.com/connecting.html

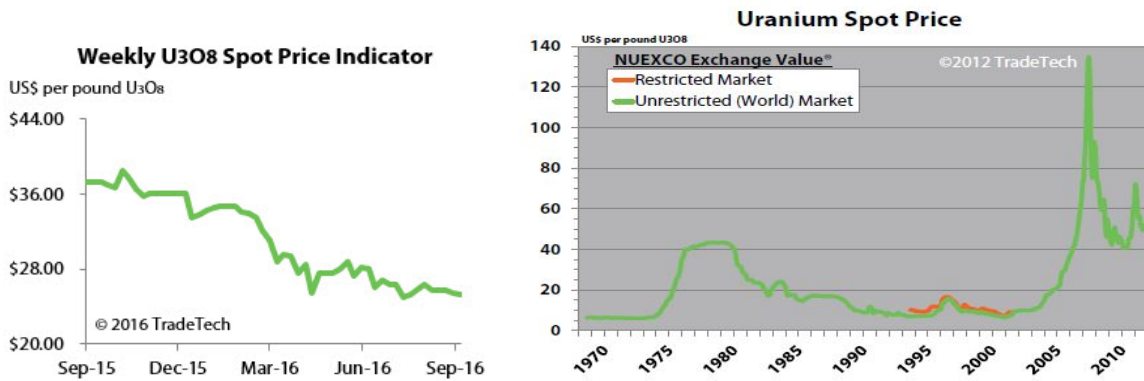


Source: Kitco website - www.kitco.com/connecting.html

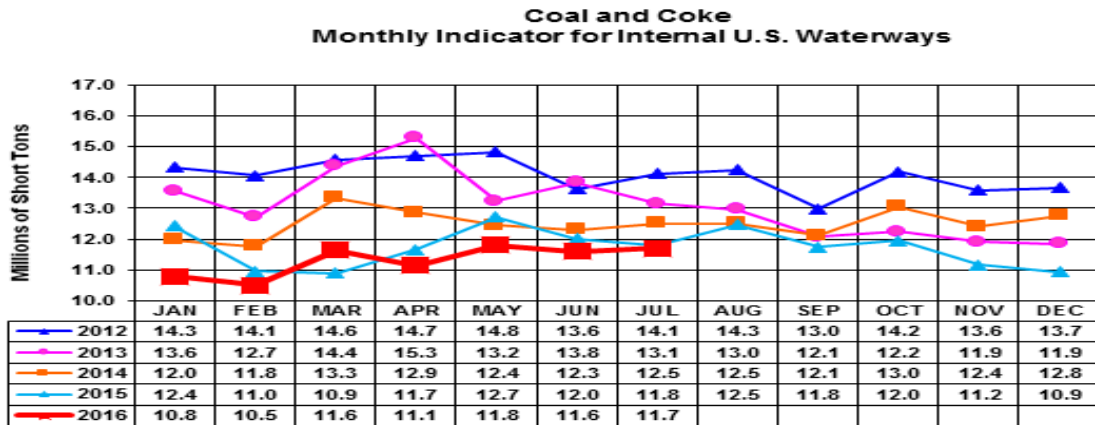


Source: Kitco website - www.kitco.com/connecting.html

Trade Tech's Uranium Price Indicators

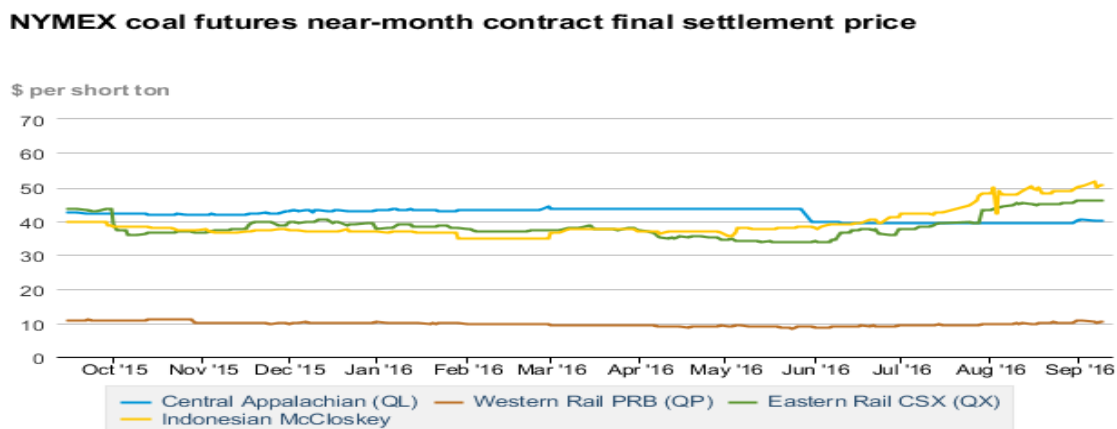


Source: Trade Tech, Uranium Info Website – www.uranium.info



Source: U.S. Army Corps of Engineers, Waterborne Commerce Statistics Center

NYMEX Coal Futures Near-month Contract Final Settlement Price



Source: The New York Mercantile Exchange (NYMEX), Daily Energy Bulletin.

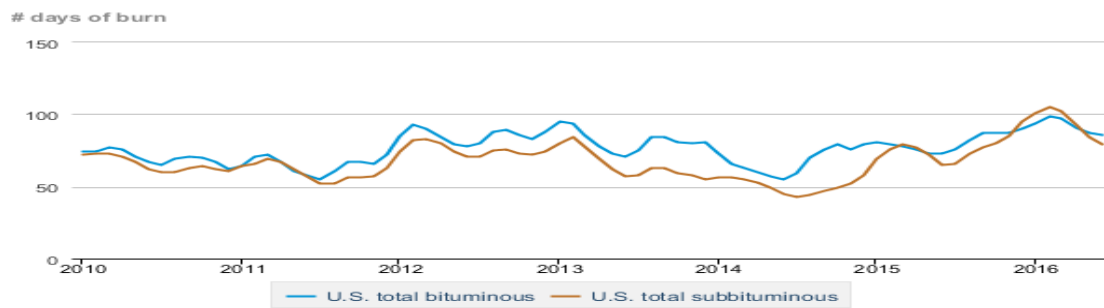
Source: Energy Information Administration, based on NYMEX and Daily Energy Bulletin data

Average weekly coal commodity spot prices dollars per short ton

	Week ending					Week ago
	08/12/16	08/19/16	08/26/16	09/02/16	09/09/16	change
Central Appalachia 12,500 Btu, 1.2 SO ₂	\$41.10	\$41.10	\$41.10	\$41.10	\$41.10	\$0.00
Northern Appalachia 13,000 Btu, < 3.0 SO ₂	\$42.35	\$42.35	\$42.35	\$42.35	\$42.35	\$0.00
Illinois Basin 11,800 Btu, 5.0 SO ₂	\$32.00	\$32.00	\$32.00	\$32.00	\$32.00	\$0.00
Powder River Basin 8,800 Btu, 0.8 SO ₂	\$8.70	\$8.70	\$8.70	\$8.70	\$8.70	\$0.00
Uinta Basin 11,700 Btu, 0.8 SO ₂	\$39.40	\$39.40	\$39.40	\$39.40	\$39.40	\$0.00

Source: Energy Information Administration (with permission from SNL), *Coal News and Markets Report*

Days of burn by non-lignite coal rank, January 2009 - June 2016



Source: U.S. Energy Information Administration

Source: Energy Information Administration, *Electricity Monthly Update Report*

Temperature -- heating & cooling degree days (week ending Sep 01)

Region	HDD Current	HDD deviation from:		CDD Current	CDD deviation from:	
		normal	last year		normal	last year
New England	0	-8	-2	61	41	26
Middle Atlantic	0	-5	-2	72	40	23
E N Central	2	-7	-7	61	30	20
W N Central	5	-8	0	53	10	0
South Atlantic	0	-1	0	110	30	27
E S Central	0	-1	-1	112	39	41
W S Central	0	0	0	112	3	8
Mountain	4	-12	4	68	9	-8
Pacific	1	-5	-1	54	14	-7
United States	1	-5	-2	79	25	14

Note: HDD = heating degree-day; CDD = cooling degree-day

Source: Energy Information Administration

USGS Production of Selected Mineral Commodities	2016 Year to Date - 1st Quarter	2015 Year to Date - 1st Quarter	Percent Change
Aluminum, secondary (000 Mt.)	226.0	191.0	18%
Cement (Mil. Mt.)	17.0	14.9	14%
Copper (000 Mt.)	355.0	336.0	6%
Gold (Mt.)	49.7	48.2	3%
Gypsum (Mil. Mt.)	4.1	3.4	21%
Iron Ore (Mil. Mt.)	9.0	13.0	-31%
Lead (000 Mt.)	82.6	93.8	-12%
Molybdenum (000 Mt.)	6.4	13.8	-54%
Phosphate rock (Mil. Mt.)	6.1	6.2	-2%
Sand & gravel, construction (Mil. Mt.)	173.0	157.0	10%
Silver (Mt.)	277.0	283.0	-2%
Soda ash (Mil. Mt.)	2.9	2.9	0%
Stone, crushed (Mil. Mt.)	270.0	224.0	21%
Zinc (000 Mt.)	166.0	203.0	-18%

Source: U.S. Geological Survey, Mineral Industry Surveys. Percent change based on USGS rounded numbers. 2016 data are preliminary estimates.

Natural gas spot prices (Henry Hub)



Source: Energy Information Administration, *Natural Gas Weekly Update*

EIA Coal Stocks and Average Number of Days of Burn (Power Sector)

Coal stocks and average number of days of burn for non-lignite coal by region (electric power sector)

Zone	Coal	June 2016		June 2015		% Change of Stocks	May 2016		% Change of Stocks
		Stocks (1000 tons)	Days of Burn	Stocks (1000 tons)	Days of Burn		Stocks (1000 tons)	Days of Burn	
Northeast	Bituminous	7,043	119	6,937	99	1.5%	7,439	115	-5.3%
	Subbituminous	171	157	806	229	-78.8%	171	184	0.0%
South	Bituminous	35,292	82	33,382	71	5.7%	37,894	84	-6.9%
	Subbituminous	7,180	74	6,457	68	11.2%	7,959	82	-9.8%
Midwest	Bituminous	18,434	91	15,778	73	16.8%	18,853	92	-2.2%
	Subbituminous	45,364	76	38,839	58	16.8%	47,382	80	-4.3%
West	Bituminous	5,862	75	5,583	69	5.0%	5,861	76	0.0%
	Subbituminous	36,200	83	32,908	74	10.0%	39,169	90	-7.6%
U.S. Total	Bituminous	66,631	86	61,680	73	8.0%	70,047	87	-4.9%
	Subbituminous	88,915	79	79,011	65	12.5%	94,681	84	-6.1%

Source: Energy Information Administration, *Electricity Monthly Update*

EIA Working Natural Gas Underground Storage

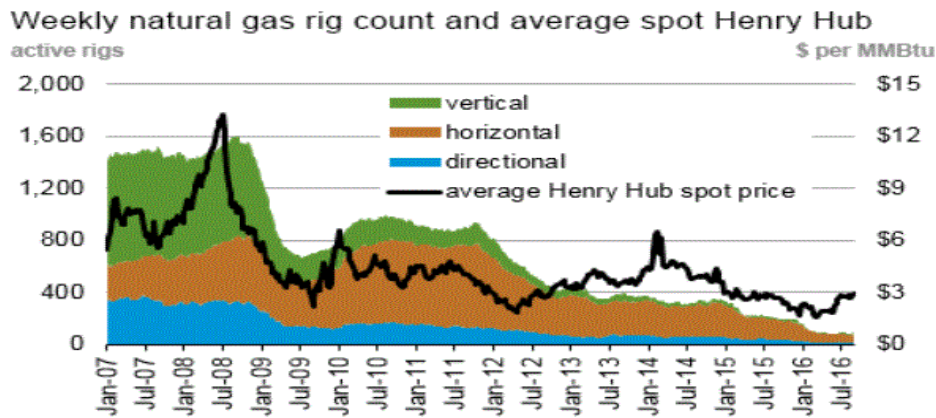
Working gas in underground storage

Region	Stocks billion cubic feet (Bcf)		
	2016-09-02	2016-08-26	change
East	812	796	16
Midwest	928	904	24
Mountain	224	222	2
Pacific	313	310	3
South Central	1,160	1,169	-9
Total	3,437	3,401	36

Source: U.S. Energy Information Administration

Source: Energy Information Administration, *Natural Gas Weekly Update*

EIA Natural Gas Rig Count and Price Trend



Source: Baker Hughes

Source: Energy Information Administration, *Natural Gas Weekly Update*

EIA Oil and Natural Gas Rig Productivity

Region	New-well oil production per rig barrels/day			New-well gas production per rig thousand cubic feet/day		
	September 2016	October 2016	change	September 2016	October 2016	change
Bakken	875	896	21	1,189	1,228	39
Eagle Ford	1,153	1,170	17	3,335	3,382	47
Haynesville	31	31	-	5,723	5,803	80
Marcellus	69	69	-	11,583	11,733	150
Niobrara	982	1,004	22	3,097	3,172	75
Permian	539	543	4	902	909	7
Utica	353	361	8	7,849	7,951	102
Rig-weighted average	595	605	10	2,804	2,715	(89)

Source: Energy Information Administration, *Drilling Productivity Report*