
National Mining Association

Weekly Statistical Summary

October 10, 2008 Edition
(Data for Week Ending October 4, 2008)

Prepared by
National Mining Association



Suite 500 East, 101 Constitution Avenue, NW
Washington, DC, 20001
Phone (202) 463-2600
Visit us at <http://www.nma.org>

NMA Weekly Statistical Summary

Vol. 46, No. 40
Dated 10/10/08

PRODUCTION, CONSUMPTION & TRADE						
	Week Ended			* Cumulative Jan 1 to		
	10/04/08	10/06/07	% Chng	10/04/08	10/04/07	% Chng
EIA Coal Production (000 Tons):						
Week Ended/Year to Date	23,223	21,854	6.3%	883,841	872,468	1.3%
52 Weeks Ended	1,152,610	1,147,237	0.5%			
* Due to leap year, 2008 cumulative reflects one extra day of tonnage.						
	September 08/07		% Chng	Jan - Sep 08/07		% Chng
Month Ended -- September	98,782	92,404	6.9%	870,264	857,763	1.5%
MONTH ENDED AND CUMULATIVE NUMBERS ARE PRELIMINARY AND SUBJECT TO CHANGE						
DOC Bituminous Coal Trade (000 Tons)						
	July 08/07		% Chng	Jan - July 08/07		% Chng
Exports:						
Metallurgical	2,948	3,247	-9.2%	24,608	17,889	37.6%
Steam	3,437	2,532	35.7%	20,339	13,525	50.4%
Imports:	2,569	3,373	-23.8%	19,191	20,564	-6.7%
	Week Ended			* Cumulative Jan 1 to		
	10/04/08	10/06/07	% Chng	10/04/08	10/06/07	% Chng
EEl Electric Output (Mil. Kwh)	74,224	78,867	-5.9%	3,168,886	3,195,894	-0.8%
AISI Raw Steel Output (000 Tons)	1,942	2,112	-8.0%	83,548	82,012	1.9%
EIA U.S. PETROLEUM DATA						
4-Week Averages						
000 Barrels per Day						
	Week Ending			Cumulative Daily Averages		
	10/03/08	10/03/07	% Chng	2008	2007	% Chng
PETROLEUM SUPPLY:						
Domestic Crude	4,045	4,895	-17.4	4,984	5,073	-1.8
Net Imports (Incl. SPR)	8,721	10,234	-14.8	9,696	10,049	-3.5
SPR Stocks W/D or Added	171	-77	--	-21	-16	--
Other Stocks W/D or added	-163	301	--	-51	5	--
Natural Gas Liquids Prod.	2,108	2,418	-12.8	2,253	2,375	-5.1



NMA

THE AMERICAN RESOURCE National Mining Association Web Site: [http:// www.nma.org](http://www.nma.org)

EIA Estimated Weekly U.S. Coal Production Overview (Thousand Short Tons)

Coal-Producing Region and State	Week Ended			Year to Date			52 Weeks Ended		
	10/4/2008	9/27/2008	10/6/2007	10/4/2008	10/4/2007	Percent Change	10/4/2008	10/6/2007	Percent Change
Alabama	386	379	393	15,715	14,844	5.9	20,312	19,058	6.6
Alaska	28	27	26	1,071	987	8.5	1,402	1,351	3.8
Arizona	157	155	155	5,765	6,239	-7.6	7,478	8,167	-8.4
Arkansas	1	1	1	45	63	-28.6	65	71	-9.3
Colorado	810	795	703	27,461	27,837	-1.4	35,822	36,569	-2.0
Illinois	597	586	485	23,380	26,561	-12.0	29,567	34,389	-14.0
Indiana	701	688	639	26,891	26,940	-0.2	34,814	35,361	-1.5
Kansas	6	6	7	230	325	-29.2	324	460	-29.5
Kentucky Total	2,377	2,335	2,104	91,628	88,785	3.2	117,924	115,827	1.8
Eastern	1,794	1,762	1,608	69,122	67,169	2.9	88,879	87,733	1.3
Western	583	572	496	22,506	21,616	4.1	29,045	28,094	3.4
Louisiana	94	47	18	2,925	2,062	41.8	3,984	3,082	29.3
Maryland	41	41	67	1,759	1,717	2.4	2,329	2,359	-1.3
Mississippi	70	70	78	2,498	2,809	-11.1	3,214	3,657	-12.1
Missouri	4	4	6	167	177	-5.6	225	250	-9.9
Montana	839	824	844	32,326	31,988	1.1	43,499	42,219	3.0
New Mexico	496	487	475	18,769	18,549	1.2	24,570	24,969	-1.6
North Dakota	564	554	500	21,872	22,627	-3.3	28,751	30,104	-4.5
Ohio	467	459	468	18,959	16,945	11.9	24,486	22,236	10.1
Oklahoma	36	35	31	1,143	1,273	-10.2	1,512	1,695	-10.8
Pennsylvania Total	1,275	1,252	1,141	50,398	50,353	0.1	64,996	65,564	-0.9
Anthracite	24	24	25	1,127	1,186	-5.0	1,505	1,544	-2.6
Bituminous	1,251	1,228	1,116	49,271	49,167	0.2	63,491	64,019	-0.8
Tennessee	52	51	57	1,913	2,002	-4.5	2,554	2,627	-2.8
Texas	780	766	850	28,958	31,509	-8.1	39,160	42,093	-7.0
Utah	474	465	487	18,278	18,075	1.1	24,405	24,504	-0.4
Virginia	479	471	417	18,392	20,409	-9.9	23,353	27,098	-13.8
Washington	--	--	--	--	--	--	0	368	-100.0
West Virginia Total	3,140	3,084	2,737	122,526	118,411	3.5	157,036	152,939	2.7
Northern	815	800	739	31,792	32,973	-3.6	40,878	42,160	-3.0
Southern	2,325	2,284	1,998	90,734	85,438	6.2	116,157	110,779	4.9
Wyoming	9,348	9,160	9,165	350,773	340,981	2.9	460,831	450,220	2.4
Appalachian Total	7,635	7,498	6,886	298,782	291,849	2.4	383,944	379,613	1.1
Interior Total	2,872	2,776	2,612	108,744	113,336	-4.1	141,909	149,153	-4.9
Western Total	12,716	12,468	12,356	476,314	467,283	1.9	626,757	618,471	1.3
East of Miss. River	9,585	9,415	8,585	374,058	369,776	1.2	480,584	481,115	-0.1
West of Miss. River	13,638	13,327	13,269	509,783	502,692	1.4	672,026	666,122	0.9
Bituminous and Lignite	23,199	22,718	21,829	882,713	871,282	1.3	1,151,106	1,145,693	0.5
Anthracite	24	24	25	1,127	1,186	-5.0	1,505	1,544	-2.6
U.S. Total	23,223	22,742	21,854	883,841	872,468	1.3	1,152,610	1,147,237	0.5
Railroad Cars Loaded	156,779	152,540	145,302	5,871,093	5,677,053	3.4	7,598,072	7,397,468	2.7

Source: Energy Information Administration

EIA Estimated Weekly and Monthly U.S. Coal Production Overview (Thousand Short Tons)

Coal-Producing Region and State	Week Ended		Year to Date		Month Ended		January - September		Percent Change
	10/4/2008	10/6/2007	10/4/2008	10/4/2007	September 2008	September 2007	2008	2007	
Alabama	386	393	15,715	14,844	1,652	1,483	15,484	14,534	6.5
Alaska	28	26	1,071	987	119	53	1,054	966	9.1
Arizona	157	155	5,765	6,239	675	642	5,671	6,115	-7.3
Arkansas	1	1	45	63	5	8	44	62	-29.0
Colorado	810	703	27,461	27,837	3,404	3,035	26,992	27,392	-1.5
Illinois	597	485	23,380	26,561	2,538	2,407	23,026	26,208	-12.1
Indiana	701	639	26,891	26,940	2,986	2,866	26,476	26,463	*
Kansas	6	7	230	325	26	30	227	319	-29.1
Kentucky Total	2,377	2,104	91,628	88,785	10,144	8,884	90,213	87,179	3.5
Eastern	1,794	1,608	69,122	67,169	7,668	6,651	68,051	65,923	3.2
Western	583	496	22,506	21,616	2,476	2,234	22,162	21,256	4.3
Louisiana	94	18	2,925	2,062	311	234	2,870	2,051	39.9
Maryland	41	67	1,759	1,717	177	164	1,734	1,664	4.2
Mississippi	70	78	2,498	2,809	283	309	2,458	2,760	-11.0
Missouri	4	6	167	177	18	17	165	172	-4.4
Montana	839	844	32,326	31,988	3,520	3,761	31,843	31,475	1.2
New Mexico	496	475	18,769	18,549	2,119	1,646	18,473	18,183	1.6
North Dakota	564	500	21,872	22,627	2,419	2,403	21,533	22,227	-3.1
Ohio	467	468	18,959	16,945	1,990	1,852	18,681	16,596	12.6
Oklahoma	36	31	1,143	1,273	155	128	1,122	1,249	-10.2
Pennsylvania Total	1,275	1,141	50,398	50,353	5,448	4,807	49,637	49,470	0.3
Anthracite	24	25	1,127	1,186	103	116	1,113	1,166	-4.6
Bituminous	1,251	1,116	49,271	49,167	5,345	4,692	48,525	48,303	0.5
Tennessee	52	57	1,913	2,002	225	193	1,881	1,956	-3.8
Texas	780	850	28,958	31,509	3,268	3,588	28,510	31,001	-8.0
Utah	474	487	18,278	18,075	2,021	1,654	17,996	17,702	1.7
Virginia	479	417	18,392	20,409	2,041	1,813	18,108	20,099	-9.9
Washington	--	--	--	--	--	--	--	--	--
West Virginia Total	3,140	2,737	122,526	118,411	13,374	11,933	120,663	116,369	3.7
Northern	815	739	31,792	32,973	3,471	3,191	31,308	32,416	-3.4
Southern	2,325	1,998	90,734	85,438	9,903	8,743	89,355	83,952	6.4
Wyoming	9,348	9,165	350,773	340,981	39,865	38,493	345,404	335,551	2.9
Appalachian Total	7,635	6,886	298,782	291,849	32,574	28,896	294,239	286,611	2.7
Interior Total	2,872	2,612	108,744	113,336	12,067	11,821	107,060	111,541	-4.0
Western Total	12,716	12,356	476,314	467,283	54,141	51,687	468,966	459,611	2.0
East of Miss. River	9,585	8,585	374,058	369,776	40,858	36,711	368,361	363,298	1.4
West of Miss. River	13,638	13,269	509,783	502,692	57,925	55,693	501,903	494,465	1.5
Bituminous and Lignite	23,199	21,829	882,713	871,282	98,679	92,288	869,152	856,597	1.5
Anthracite	24	25	1,127	1,186	103	116	1,113	1,166	-4.6
U.S. Total	23,223	21,854	883,841	872,468	98,782	92,404	870,264	857,763	1.5
Railroad Cars Loaded	156,779	145,302	5,871,093	5,677,053	--	--	--	--	--

Source: Energy Information Administration



Volume 76 No. 40

OUTPUT FOR WEEK ENDED - Oct 04, 2008

Oct 08, 2008

The net available amount of electric energy distributed by the Total Electric Utility Industry+ for the week ended Saturday, **Oct 04, 2008** was **74,224** gigawatthours (GWh), according to the Edison Electric Institute. This is equivalent to **181** on the weekly electric output index.

WEEKLY ELECTRIC OUTPUT BY GEOGRAPHIC DIVISION
(48 CONTIGUOUS STATES)

	Week Ended October 04		52 Weeks Ended October 04	
	GWh Output	% Increase Over Corresponding Week of 2007	GWh Output	% Increase Over Corresponding Period of 2007
New England	2,324	-6.9	131,911	-1.2
Mid-Atlantic	7,854	-9.2	452,844	-0.3
Central Industrial	12,356	-8.7	710,072	-1.2
West Central	6,234	-5.8	346,012	-1.3
Southeast	19,323	-10.1	1,094,581	-0.4
South Central	11,239	-11.2	604,250	1.5
Rocky Mountain	5,729	5.3	276,790	1.4
Pacific Northwest	2,769	-2.5	167,532	6.4
Pacific Southwest	6,396	24.2	289,612	-1.2
Total United States	74,224	-5.9	4,073,604	0.0

WEEKLY ELECTRIC OUTPUT IN PREVIOUS WEEKS--GWh

Week Ended	2008	Week Ended	2007	% Inc. (08/07)	52 Weeks Ended	2008	% Inc. (08/07)
Sep 13	80,537	Sep 15	81,556	-1.2	Sep 13	4,085,038	0.6
Sep 20	76,962	Sep 22	79,130	-2.7	Sep 20	4,082,870	0.5
Sep 27	76,398	Sep 29	81,021	-5.7	Sep 27	4,078,247	0.2
Oct 04	74,224	Oct 06	78,867	-5.9	Oct 04	4,073,604	0.0
Oct 04	3,168,886	Oct 06	3,195,894	-0.8	YEAR TO DATE, FIRST 40 WEEKS		

WEEKLY ELECTRIC OUTPUT INDEX--TOTAL U.S.*
SEASONALLY ADJUSTED 1982 = 100

Week Ended	2008	Week Ended	2007	Week Ended	2006
Sep 13	179	Sep 15	175	Sep 16	168
Sep 20	175	Sep 22	175	Sep 23	172
Sep 27	184	Sep 29	189	Sep 30	172
Oct 04	181	Oct 06	187	Oct 07	179

* Excludes Alaska and Hawaii.

+ Includes investor-owned companies, cooperatives and government-owned utilities.

Copyright © 2008 Edison Electric Institute. All rights reserved.

**WEEKLY ELECTRIC OUTPUT BY GEOGRAPHIC DIVISION
(48 CONTIGUOUS STATES)**

	Week Ended			NMA CUMULATIVE JANUARY WEEK ONE TO			52 Weeks Ended		
	4-Oct 2008 GWh Output	6-Oct 2007 GWh Output	% Increase Over Corresponding Week of 2007	4-Oct 2008 GWh Output	6-Oct 2007 GWh Output	% Increase Over Corresponding Week of 2007	4-Oct 2008 GWh Output	6-Oct 2007 GWh Output	% Increase Over Corresponding Week of 2007
New England	2,324	2,496	-6.9%	101,756	104,291	-2.4%	131,911	133,497	-1.2%
Mid-Atlantic	7,854	8,650	-9.2%	351,516	357,337	-1.6%	452,844	454,317	-0.3%
Central Industrial	12,356	13,527	-8.7%	549,119	561,185	-2.2%	710,072	718,491	-1.2%
West Central	6,234	6,617	-5.8%	268,810	275,013	-2.3%	346,012	350,539	-1.3%
Southeast	19,323	21,493	-10.1%	850,014	862,094	-1.4%	1,094,581	1,099,192	-0.4%
South Central	11,239	12,653	-11.2%	479,923	473,809	1.3%	604,250	595,581	1.5%
Rocky Mountain	5,729	5,443	5.3%	212,710	213,349	-0.3%	276,790	272,876	1.4%
Pacific Northwest	2,769	2,840	-2.5%	127,291	118,838	7.1%	167,532	157,517	6.4%
Pacific Southwest	6,396	5,148	24.2%	227,749	229,977	-1.0%	289,612	293,261	-1.2%
Total United States *	<u>74,224</u>	<u>78,867</u>	-5.9%	<u>3,168,888</u>	<u>3,195,893</u>	-0.8%	4,073,604	4,075,271	0.0%

Notes: EEI output data are an estimate of electricity load made available for distribution derived as weekly net generation + purchases from non-utilities + net imports - exports - sales for resale. It is not meant to be a measure of electricity generation for the U.S. EEI survey data represent the majority of national distribution (large utilities, large government power projects, some independent and large municipal power projects). The remaining segment of the industry (smaller producers) is estimated. Non-utility generation is captured via direct sales to utilities.

* Excludes Alaska and Hawaii

** Less than one-tenth of one percent

SOURCE: Edison Electric Institute (EEI), *Weekly Electric Output Report*.

AMERICAN IRON AND STEEL INSTITUTE
 1140 Connecticut Avenue, Suite 705
 Washington, D.C. 20036

October 6, 2008

ESTIMATED WEEKLY RAW STEEL* PRODUCTION

Period	Thousand Net Tons	Percent Change from Previous Period	Percent Capability Utilization**	Production by District		
				Week Ending Oct. 20	Week Ending Sep. 27	
Week Ending				North East Coast	181	187
October 4, 2008	1,942	-2.3	81.4	Pgh/Youngstown	173	175
October 4, 2008	2,112	-8.1	88.5	Lake Erie	92	90
September 27, 2008	1,986	-2.1	83.2	Detroit	69	76
				Indiana/Chicago	468	480
				Midwest	259	265
				Southern	615	630
				Western	85	83
				Total	1,942	1,986
Year-to-Date+						
October 4, 2008	83,548	1.9	88.2			
October 4, 2008	82,012	-	86.4			

*Raw steel production tonnage included in this report is estimated based on a sampling of steel producers. Therefore, this report should be used primarily to assess production trends. The AISI production report "AIS 7," produced monthly and available by subscription, provides a more accurate summary of steel production based on data supplied by companies representing approximately 75% of U.S. production capacity.

+ Includes revisions for previous months

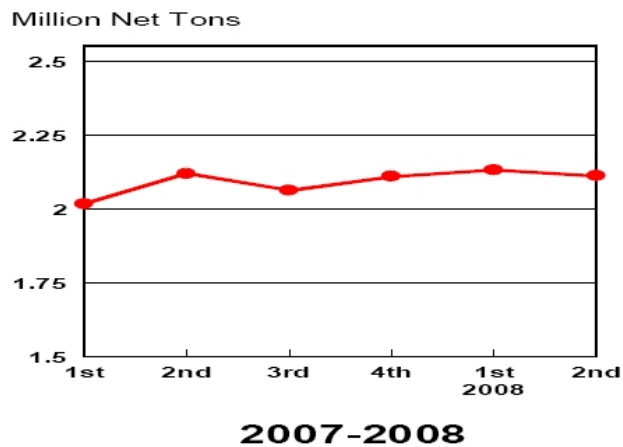
NOTE: Capability for the Third Quarter 2008 is approximately 31.4 million net tons vs 30.1 million net tons for the same period last year, and 31.0 million tons for the second quarter of 2008.

Capability -	2004 approx.	2.2 million tons/week
	2005	2.3
	2006	2.4
	2007	2.4
	2008	2.4

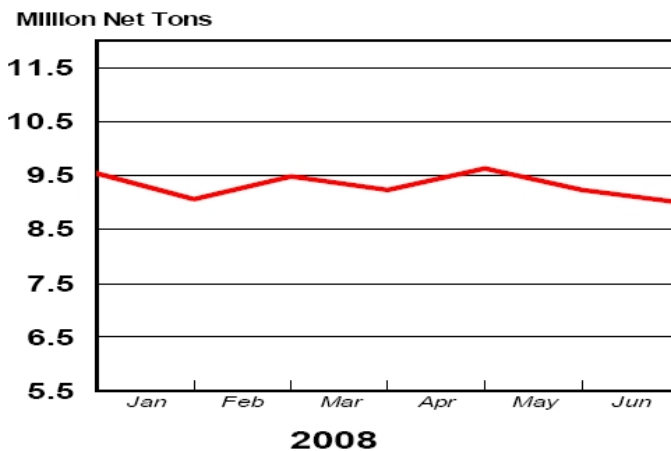
*Steel in the first solid state after melting suitable for further processing or sale, including ingots, steel for castings and strand or pressure cast blooms, slabs, or other product forms.

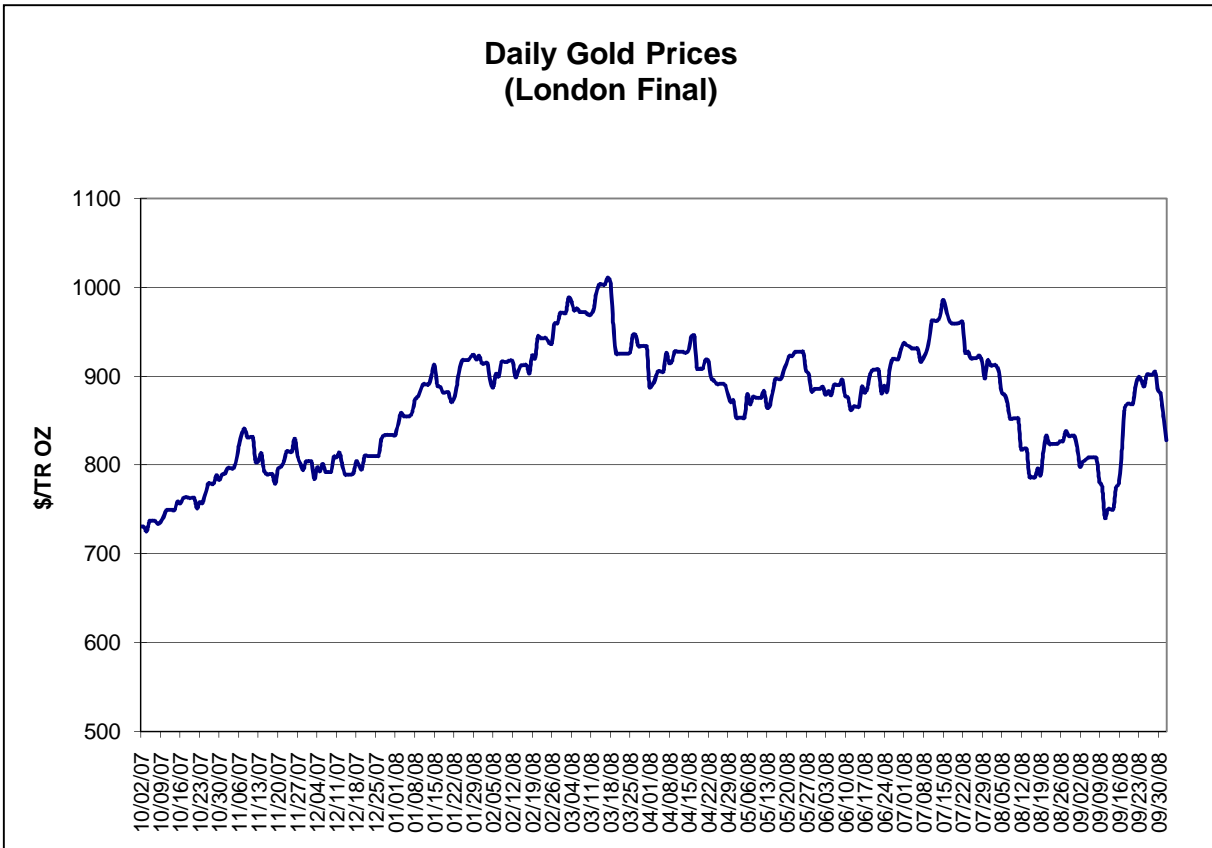
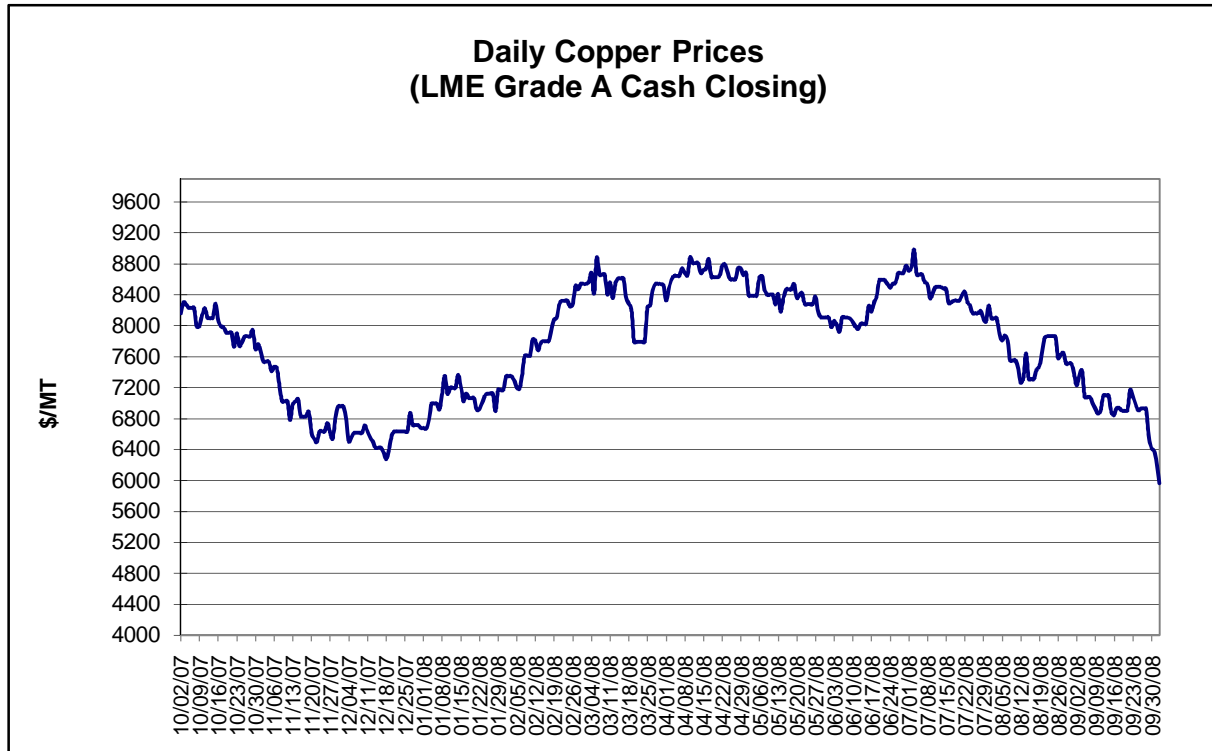
** Based on tonnage capability to produce raw steel for a sustained full order book.

Average Weekly Raw Steel Production



Monthly Raw Steel Production

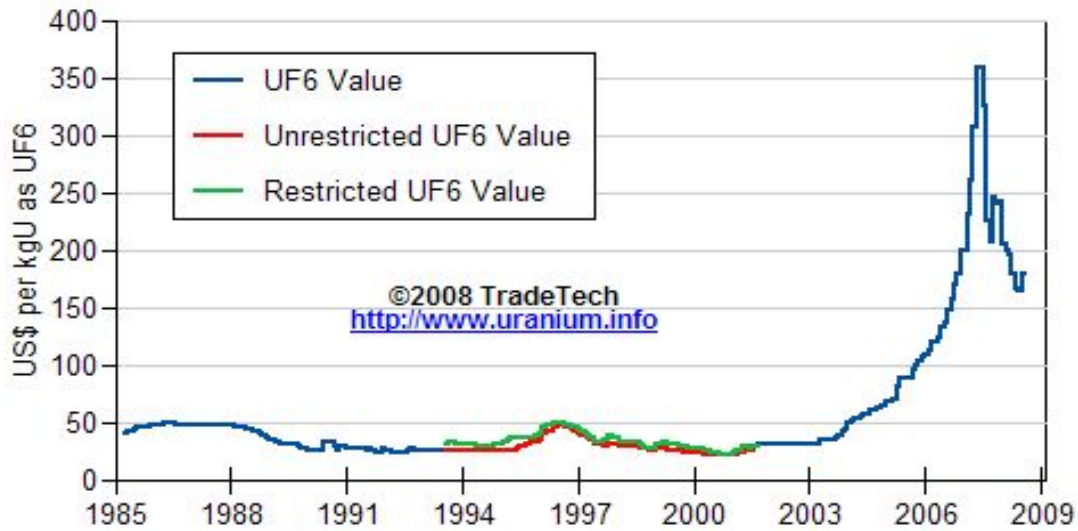




Data reflect closings on weekends and holidays.

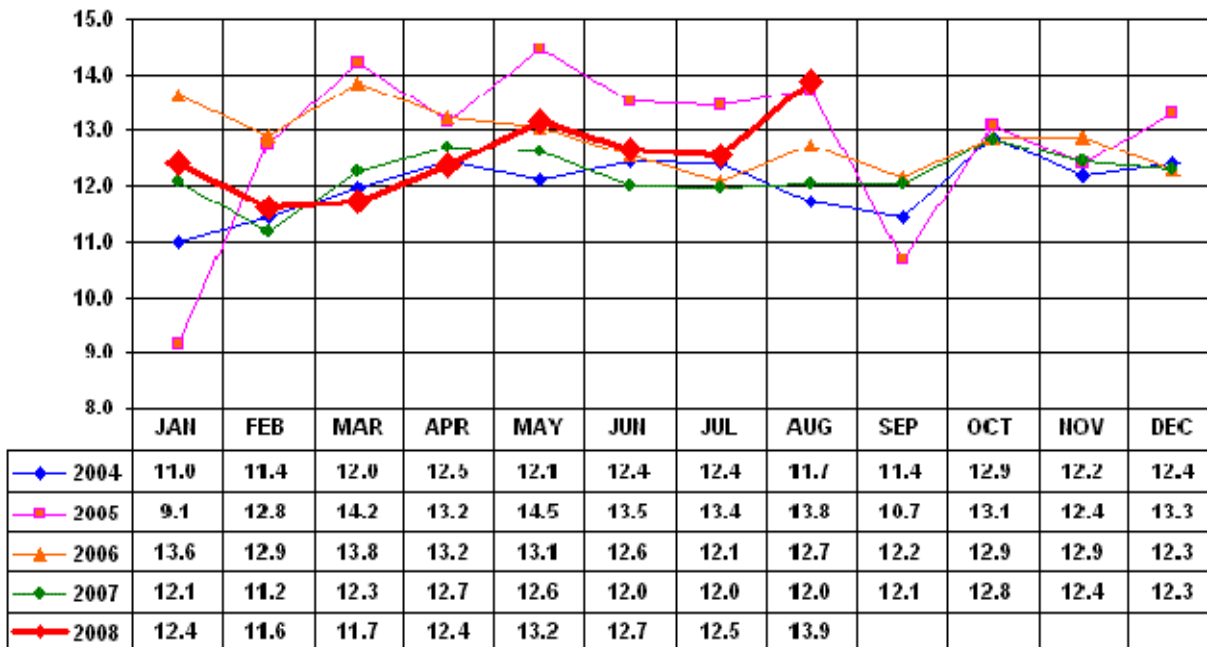
Source: Platts Metals Week

Trade Tech's Uranium (UF6) Monthly Spot Prices (US\$/kg as UF6)



Source: Trade Tech, Uranium Info Website – <http://www.uranium.info>

Coal and Coke Monthly Tonnage Indicator for Internal U.S. Waterways

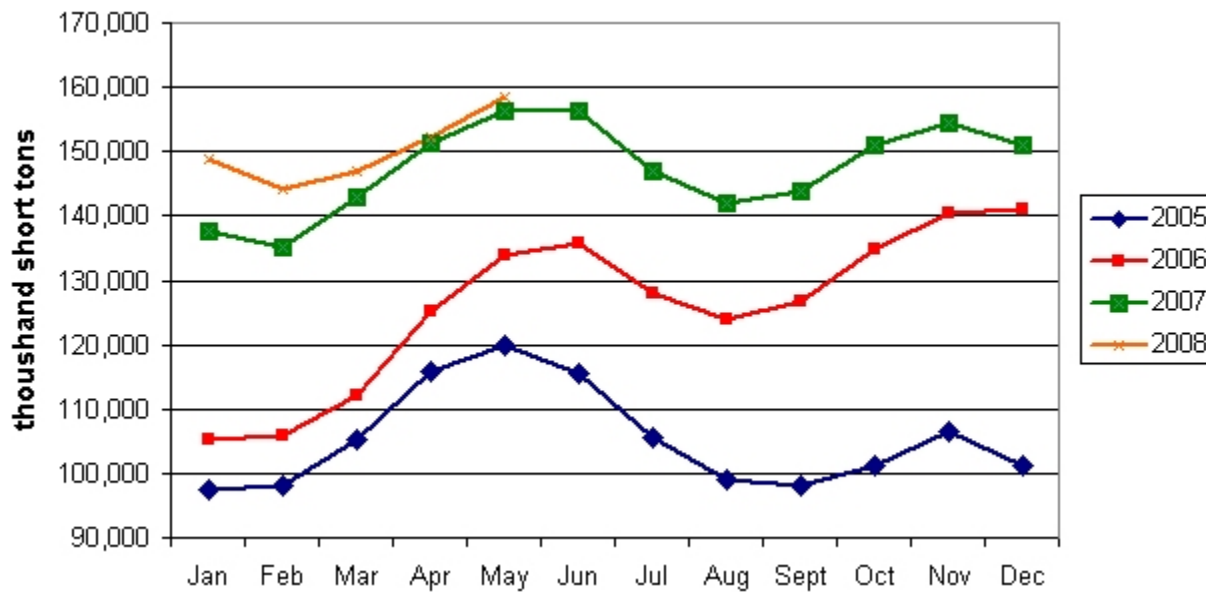


Source: U.S. Army Corps of Engineers, Waterborne Commerce Statistics Center

Weekly Coal Commodity Spot Prices (Dollars per Short Ton)					
Week Ended	Central Appalachia 12,500 Btu, 1.2 SO2	Northern Appalachia 13,000 Btu, <3.0 SO2	Illinois Basin 11,800 Btu, 5.0 SO2	Powder River Basin 8,800 Btu, 0.8 SO2	Uinta Basin 11,700 Btu, 0.8 SO2
22-Aug-08	\$140.00	\$144.00	\$93.00	\$11.00	\$62.00
29-Aug-08	\$140.00	\$144.00	\$83.00	\$11.00	\$62.00
05-Sep-08	\$140.00	\$140.00	\$83.00	\$11.00	\$61.00
12-Sep-08	\$140.00	\$140.00	\$83.00	\$11.00	\$61.00
19-Sep-08	\$140.00	\$150.00	\$84.00	\$11.25	\$61.00
26-Sep-08	\$135.00	\$150.00	\$84.00	\$11.25	\$61.00
03-Oct-08	\$133.00	\$143.00	\$84.00	\$14.50	\$61.00

Source: Energy Information Administration (from Platts *Coal Outlook*, "Weekly Price Survey")

EIA Electric Power Sector Coal Stocks



Source: Energy Information Administration

USGS Production of Selected Mineral Commodities	2008 Year to Date - 2nd Quarter	2007 Year to Date - 2nd Quarter	Percent Change
Aluminum, secondary (000 Mt.)	445.0	477.0	-7%
Cement (Mil. Mt.)	41.1	43.7	-6%
Gypsum (Mil. Mt.)	9.4	10.9	-14%
Iron Ore (Mil. Mt.)	26.8	25.1	7%
Phosphate rock (Mil. Mt.)	15.3	14.7	4%
Sand & gravel, construction (Mil. Mt.)	477.0	533.0	-11%
Soda ash (Mil. Mt.)	5.6	5.5	2%
Stone, crushed (Mil. Mt.)	664.0	730.0	-9%
Zinc (000 Mt.)	420.0	365.0	15%

Source: U.S. Geological Survey, Mineral Industry Surveys, *U.S. Production of Selected Mineral Commodities in the Second Quarter 2008*, August 2008