
National Mining Association

Weekly Statistical Summary

October 12, 2007 Edition
(Data for Week Ending October 6, 2007)

Prepared by
National Mining Association



Suite 500 East, 101 Constitution Avenue, NW
Washington, DC, 20001
Phone (202) 463-2600
Visit us at <http://www.nma.org>

NMA Weekly Statistical Summary

Vol. 45, No. 40
Dated 10/12/07

PRODUCTION, CONSUMPTION & TRADE						
	Week Ended			Cumulative Jan 1 to		
	10/06/07	10/07/06	% Chng	10/06/07	10/07/06	% Chng
EIA Coal Production (000 Tons):						
Week Ended/Year to Date	22,134	22,026	0.5%	878,316	891,765	-1.5%
52 Weeks Ended	1,147,687	1,151,930	-0.4%			
Month Ended -- September						
	September 07/06	% Chng		Jan - September 07/06	% Chng	
	93,029	94,144	-1.2%	857,912	871,353	-1.5%
MONTH ENDED AND CUMULATIVE NUMBERS ARE PRELIMINARY AND SUBJECT TO CHANGE						
DOC Bituminous Coal Trade (000 Tons)						
Exports:	July 07/06			Jan - July 07/06		
		% Chng			% Chng	
Metallurgical	3,247	1,483	118.9%	17,889	15,204	17.7%
Steam	2,532	1,847	37.1%	13,525	11,182	21.0%
Imports:	3,373	3,181	6.0%	20,564	20,095	2.3%
EI Electric Output (Mil. Kwh)						
	78,867	74,504	5.9%	3,195,894	3,109,491	2.8%
AISI Raw Steel Output (000 Tons)						
	2,137	2,134	0.1%	81,531	85,619	-4.8%
EIA U.S. PETROLEUM DATA						
4-Week Averages 000 Barrels per Day						
PETROLEUM SUPPLY:						
	Week Ending			Cumulative Daily Averages		
	10/05/07	10/05/06	% Chng	2007	2006	% Chng
Domestic Crude	5,047	5,122	-1.5	5,157	5,094	1.2
Net Imports (Incl. SPR)	10,068	10,597	-5.0	9,991	10,173	-1.8
SPR Stocks W/D or Added	-85	-4	--	-15	-12	--
Other Stocks W/D or added	92	-52	--	-17	-36	--
Natural Gas Liquids Prod.	2,363	2,445	-3.4	2,374	2,185	8.6



NMA
THE AMERICAN RESOURCE

National Mining Association Web Site: [http:// www.nma.org](http://www.nma.org)

EIA Estimated Weekly U.S. Coal Production Overview (Thousand Short Tons)

Coal-Producing Region and State	Week Ended			Year To Date			52 Weeks Ended		
	10/6/2007	9/29/2007	10/7/2006	10/6/2007	10/6/2006	Percent Change	10/6/2007	10/7/2006	Percent Change
Alabama	376	397	362	15,094	14,886	1.4	19,227	19,344	-0.6
Alaska	26	27	31	1,165	1,066	9.3	1,525	1,359	12.2
Arizona	145	153	166	6,148	6,320	-2.7	8,044	8,885	-9.5
Arkansas	1	1	1	46	14	215.8	54	15	256.0
Colorado	719	759	737	28,432	27,697	2.7	36,978	35,870	3.1
Illinois	607	641	668	27,064	24,982	8.3	34,784	31,828	9.3
Indiana	669	706	718	27,393	26,814	2.2	35,674	34,886	2.3
Kansas	8	9	11	344	293	17.4	477	327	45.7
Kentucky Total	2,177	2,299	2,305	89,630	94,481	-5.1	116,223	121,901	-4.7
Eastern	1,634	1,725	1,754	67,592	73,602	-8.2	87,819	94,818	-7.4
Western	543	574	551	22,039	20,880	5.5	28,405	27,084	4.9
Louisiana	19	19	94	2,140	3,089	-30.7	3,155	4,054	-22.2
Maryland	97	103	54	2,546	4,425	-42.5	3,174	5,571	-43.0
Mississippi	86	86	62	2,840	2,964	-4.2	3,667	3,790	-3.2
Missouri	6	6	6	199	323	-38.5	270	477	-43.5
Montana	758	800	861	30,916	31,718	-2.5	40,918	40,921	*
New Mexico	473	500	548	19,771	19,583	1.0	26,089	26,243	-0.6
North Dakota	495	522	640	21,655	23,035	-6.0	29,031	30,213	-3.9
Ohio	449	475	451	17,092	17,518	-2.4	22,280	23,243	-4.1
Oklahoma	38	40	36	1,385	1,583	-12.5	1,800	2,027	-11.2
Pennsylvania Total	1,152	1,217	1,298	50,698	51,186	-1.0	65,669	67,206	-2.3
Anthracite	26	27	30	1,166	1,185	-1.6	1,519	1,610	-5.7
Bituminous	1,126	1,189	1,267	49,532	50,001	-0.9	64,151	65,596	-2.2
Tennessee	53	56	54	2,099	2,191	-4.2	2,712	2,900	-6.5
Texas	864	912	855	32,537	35,091	-7.3	42,883	46,476	-7.7
Utah	437	462	548	18,756	19,680	-4.7	25,081	25,344	-1.0
Virginia	541	571	574	22,118	23,255	-4.9	28,714	29,301	-2.0
Washington	0	0	54	0	2,211	-100.0	368	3,242	-88.6
West Virginia Total	2,782	2,937	2,940	118,805	118,349	0.4	152,732	152,982	-0.2
Northern	861	909	783	35,204	33,348	5.6	44,231	43,292	2.2
Southern	1,920	2,028	2,157	83,602	85,001	-1.6	108,501	109,689	-1.1
Wyoming	9,154	9,094	7,953	339,446	339,012	0.1	446,156	433,525	2.9
Appalachian Total	7,086	7,481	7,486	296,043	305,411	-3.1	382,328	395,364	-3.3
Interior Total	2,841	2,993	3,001	115,985	116,033	*	151,169	150,965	0.1
Western Total	12,207	12,317	11,539	466,288	470,321	-0.9	614,190	605,601	1.4
East of Miss. River	8,991	9,487	9,484	375,378	381,051	-1.5	484,858	492,952	-1.6
West of Miss. River	13,143	13,304	12,542	502,937	510,714	-1.5	662,829	658,977	0.6
Bituminous and Lignite	22,108	22,764	21,996	877,150	890,581	-1.5	1,146,168	1,150,319	-0.4
Anthracite	26	27	30	1,166	1,185	-1.6	1,519	1,610	-5.7
U.S. Total	22,134	22,791	22,026	878,316	891,765	-1.5	1,147,687	1,151,930	-0.4
Railroad Cars Loaded	145,302	151,026	145,344	5,677,053	5,734,942	-1.0	7,397,468	7,367,613	0.4

Source: Energy Information Administration

EIA Estimated Monthly U.S. Coal Production Overview (Thousand Short Tons)

Coal-Producing Region and State	Week Ended		Year to Date		Month Ended		January - September		Percent Change
	10/6/2007	10/7/2006	10/6/2007	10/6/2006	September 2007	September 2006	2007	2006	
Alabama	376	362	15,094	14,886	1,580	1,458	14,719	14,526	1.3
Alaska	26	31	1,165	1,066	107	102	1,140	1,035	10.2
Arizona	145	166	6,148	6,320	607	691	6,003	6,154	-2.5
Arkansas	1	1	46	14	3	2	45	14	225.1
Colorado	719	737	28,432	27,697	3,165	3,429	27,788	27,038	2.8
Illinois	607	668	27,064	24,982	2,590	2,729	26,482	24,341	8.8
Indiana	669	718	27,393	26,814	2,844	2,822	26,746	26,120	2.4
Kansas	8	11	344	293	36	41	335	282	19.1
Kentucky Total	2,177	2,305	89,630	94,481	9,215	9,456	87,503	92,229	-5.1
Eastern	1,634	1,754	67,592	73,602	6,890	7,336	65,984	71,876	-8.2
Western	543	551	22,039	20,880	2,325	2,119	21,520	20,354	5.7
Louisiana	19	94	2,140	3,089	253	315	2,124	3,005	-29.3
Maryland	97	54	2,546	4,425	410	494	2,449	4,371	-44.0
Mississippi	86	62	2,840	2,964	310	288	2,763	2,909	-5.0
Missouri	6	6	199	323	24	15	193	317	-39.1
Montana	758	861	30,916	31,718	3,360	3,579	30,249	30,961	-2.3
New Mexico	473	548	19,771	19,583	2,000	2,096	19,307	19,045	1.4
North Dakota	495	640	21,655	23,035	2,070	2,541	21,160	22,395	-5.5
Ohio	449	451	17,092	17,518	1,913	1,795	16,658	17,083	-2.5
Oklahoma	38	36	1,385	1,583	158	155	1,347	1,547	-12.9
Pennsylvania Total	1,152	1,298	50,698	51,186	4,860	4,947	49,564	49,909	-0.7
Anthracite	26	30	1,166	1,185	108	115	1,140	1,155	-1.3
Bituminous	1,126	1,267	49,532	50,001	4,751	4,832	48,424	48,754	-0.7
Tennessee	53	54	2,099	2,191	222	221	2,046	2,137	-4.3
Texas	864	855	32,537	35,091	3,846	4,067	31,784	34,346	-7.5
Utah	437	548	18,756	19,680	1,852	1,828	18,329	19,145	-4.3
Virginia	541	574	22,118	23,255	2,304	2,426	21,596	22,702	-4.9
Washington	0	54	0	2,211	0	219	0	2,157	-100.0
West Virginia Total	2,782	2,940	118,805	118,349	11,828	11,865	116,115	115,506	0.5
Northern	861	783	35,204	33,348	3,655	3,160	34,367	32,588	5.5
Southern	1,920	2,157	83,602	85,001	8,173	8,704	81,748	82,919	-1.4
Wyoming	9,154	7,953	339,446	339,012	37,475	36,564	331,466	332,078	-0.2
Appalachian Total	7,086	7,486	296,043	305,411	30,007	30,543	289,132	298,111	-3.0
Interior Total	2,841	3,001	115,985	116,033	12,388	12,553	113,339	113,234	0.1
Western Total	12,207	11,539	466,288	470,321	50,634	51,048	455,441	460,008	-1.0
East of Miss. River	8,991	9,484	375,378	381,051	38,075	38,501	366,642	371,835	-1.4
West of Miss. River	13,143	12,542	502,937	510,714	54,953	55,643	491,269	499,518	-1.7
Bituminous and Lignite	22,108	21,996	877,150	890,581	92,920	94,029	856,772	870,198	-1.5
Anthracite	26	30	1,166	1,185	108	115	1,140	1,155	-1.3
U.S. Total	22,134	22,026	878,316	891,765	93,029	94,144	857,912	871,353	-1.5
Railroad Cars Loaded	145,302	145,344	5,677,053	5,734,942	--	--	--	--	--

Source: Energy Information Administration



Volume 75 No. 40

OUTPUT FOR WEEK ENDED - Oct 06, 2007

Oct 10, 2007

The net available amount of electric energy distributed by the Total Electric Utility Industry+ for the week ended Saturday, Oct 06, 2007 was **78,867** gigawatthours (GWh), according to the Edison Electric Institute. This is equivalent to **187** on the weekly electric output index.

WEEKLY ELECTRIC OUTPUT BY GEOGRAPHIC DIVISION
(48 CONTIGUOUS STATES)

	Week Ended October 06		52 Weeks Ended October 06	
	GWh Output	% Increase Over Corresponding Week of 2006	GWh Output	% Increase Over Corresponding Period of 2006
New England	2,496	6.9	133,497	0.5
Mid-Atlantic	8,650	10.7	454,317	1.8
Central Industrial	13,527	8.0	718,491	3.0
West Central	6,617	5.9	350,539	1.7
Southeast	21,493	7.1	1,099,192	2.4
South Central	12,653	4.2	595,581	-0.4
Rocky Mountain	5,443	5.8	272,876	5.6
Pacific Northwest	2,840	7.6	157,517	4.2
Pacific Southwest	5,148	-7.9	293,261	0.5
Total United States	78,867	5.9	4,075,271	2.0

WEEKLY ELECTRIC OUTPUT IN PREVIOUS WEEKS--GWh

Week Ended	2007	Week Ended	2006	% Inc. (07/06)	52 Weeks Ended	2007	% Inc. (07/06)
Sep 15	81,556	Sep 16	77,357	5.4	Sep 15	4,060,145	1.4
Sep 22	79,130	Sep 23	76,523	3.4	Sep 22	4,062,753	1.6
Sep 29	81,021	Sep 30	72,866	11.2	Sep 29	4,070,908	1.9
Oct 06	78,867	Oct 07	74,504	5.9	Oct 06	4,075,271	2.0
Oct 06	3,195,894	Oct 07	3,109,491	2.8	YEAR TO DATE, FIRST 40 WEEKS		

WEEKLY ELECTRIC OUTPUT INDEX--TOTAL U.S.*
SEASONALLY ADJUSTED 1982 = 100

Week Ended	2007	Week Ended	2006	Week Ended	2005
Sep 15	175	Sep 16	168	Sep 17	189
Sep 22	175	Sep 23	172	Sep 24	196
Sep 29	189	Sep 30	172	Oct 01	183
Oct 06	187	Oct 07	179	Oct 08	189

* Excludes Alaska and Hawaii

+ Includes investor-owned companies, cooperatives and government-owned utilities.

Copyright © 2007 Edison Electric Institute. All rights reserved.

WEEKLY ELECTRIC OUTPUT BY GEOGRAPHIC DIVISION (48 CONTIGUOUS STATES)

	Week Ended			NMA CUMULATIVE JANUARY 1 to			52 Weeks Ended		
	6-Oct 2007 GWh Output	7-Oct 2006 GWh Output	% Increase Over Corresponding Week of 2006	6-Oct 2007 GWh Output	7-Oct 2006 GWh Output	% Increase Over Corresponding Week of 2006	6-Oct 2007 GWh Output	7-Oct 2006 GWh Output	% Increase Over Corresponding Week of 2006
New England	2,496	2,334	6.9%	104,291	102,618	1.6%	133,497	132,775	0.5%
Mid-Atlantic	8,650	7,815	10.7%	357,337	346,771	3.0%	454,317	446,077	1.8%
Central Industrial	13,527	12,527	8.0%	561,185	537,582	4.4%	718,491	697,555	3.0%
West Central	6,617	6,247	5.9%	275,013	268,623	2.4%	350,539	344,533	1.7%
Southeast	21,493	20,064	7.1%	862,094	834,993	3.2%	1,099,192	1,073,119	2.4%
South Central	12,653	12,144	4.2%	473,809	476,598	-0.6%	595,581	598,255	-0.4%
Rocky Mountain	5,443	5,145	5.8%	213,349	201,095	6.1%	272,876	258,414	5.6%
Pacific Northwest	2,840	2,640	7.6%	118,838	112,696	5.5%	157,517	151,212	4.2%
Pacific Southwest	<u>5,148</u>	<u>5,588</u>	-7.9%	<u>229,977</u>	<u>228,518</u>	0.6%	<u>293,261</u>	<u>291,695</u>	0.5%
Total United States *	78,867	74,504	5.9%	3,195,893	3,109,494	2.8%	4,075,271	3,993,635	2.0%

Notes: EEI output data are an estimate of electricity load made available for distribution derived as weekly net generation + purchases from non-utilities + net imports - exports - sales for resale. It is not meant to be a measure of electricity generation for the U.S. EEI survey data represent the majority of national distribution (large utilities, large government power projects, some independent and large municipal power projects). The remaining segment of the industry (smaller producers) is estimated. Non-utility generation is captured via direct sales to utilities.

* Excludes Alaska and Hawaii

** Less than one-tenth of one percent

SOURCE: Edison Electric Institute (EEI), *Weekly Electric Output Report*.

AMERICAN IRON AND STEEL INSTITUTE
 1140 Connecticut Avenue, Suite 705
 Washington, D.C. 20036

October 8, 2007

ESTIMATED WEEKLY RAW STEEL* PRODUCTION

<u>Period</u>	<u>Thousand Net Tons</u>	<u>Percent Change from Previous Period</u>	<u>Percent Capability Utilization**</u>	<u>Production by District</u>	
				<u>Week Ending</u>	
				<u>Oct 6</u>	<u>Sep 29</u>
<u>Week Ending</u>					
Oct. 6, 2007	2,137	0.5	90.1	North East Coast 140	138
Oct. 6, 2006	2,134	0.1	86.2	Pgh/Youngstown 199	205
Sept 29, 2007	2,125	1.1	89.8	Lake Erie 103	106
				Detroit 135	128
				Indiana/Chicago 561	559
				Midwest 250	252
				Southern 657	642
				Western <u>92</u>	<u>95</u>
				Total 2137	2125
<u>Year-to-Date+</u>					
Oct. 6, 2007	81,531	-4.7	85.7		
Oct. 6, 2006	85,619	-	89.8		

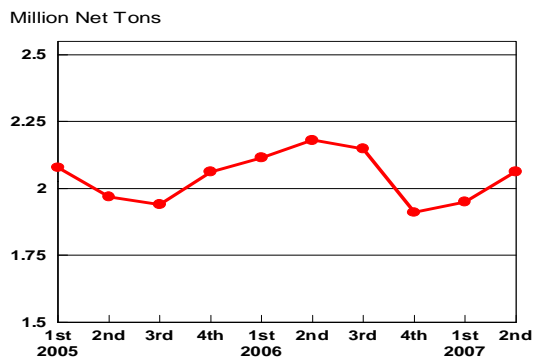
*Raw steel production tonnage included in this report is estimated based on a sampling of steel producers. Therefore, this report should be used primarily to assess production trends. The AISI production report "AIS 7," produced monthly and available by subscription, provides a more accurate summary of steel production based on data supplied by companies representing approximately 75% of U.S. production capacity.

+Includes revisions for previous months

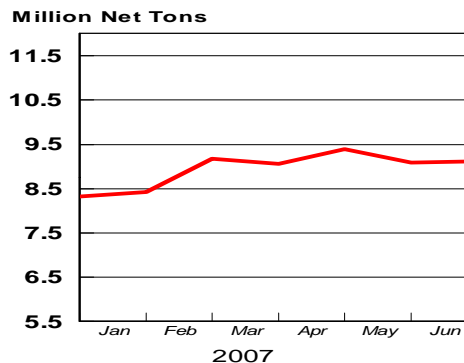
NOTE: Capability for the First Quarter 2007 is approximately 31.2 million net tons vs 30.5 million net tons for the same period last year, and 30.7 million tons for the fourth quarter of 2006.

Capability -	2003 approx.	2.3 million tons/week
	2004	2.2
	2005	2.3
	2006	2.4
	2007	2.4

Average Weekly Raw Steel Production

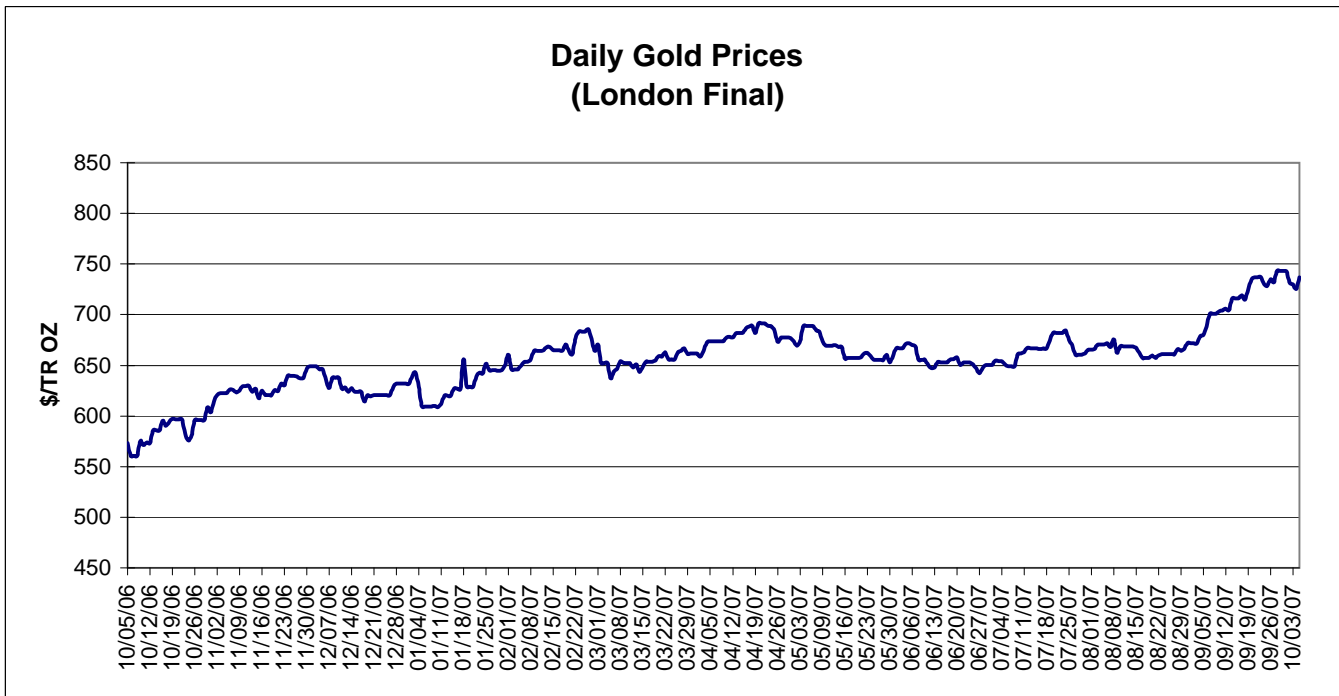
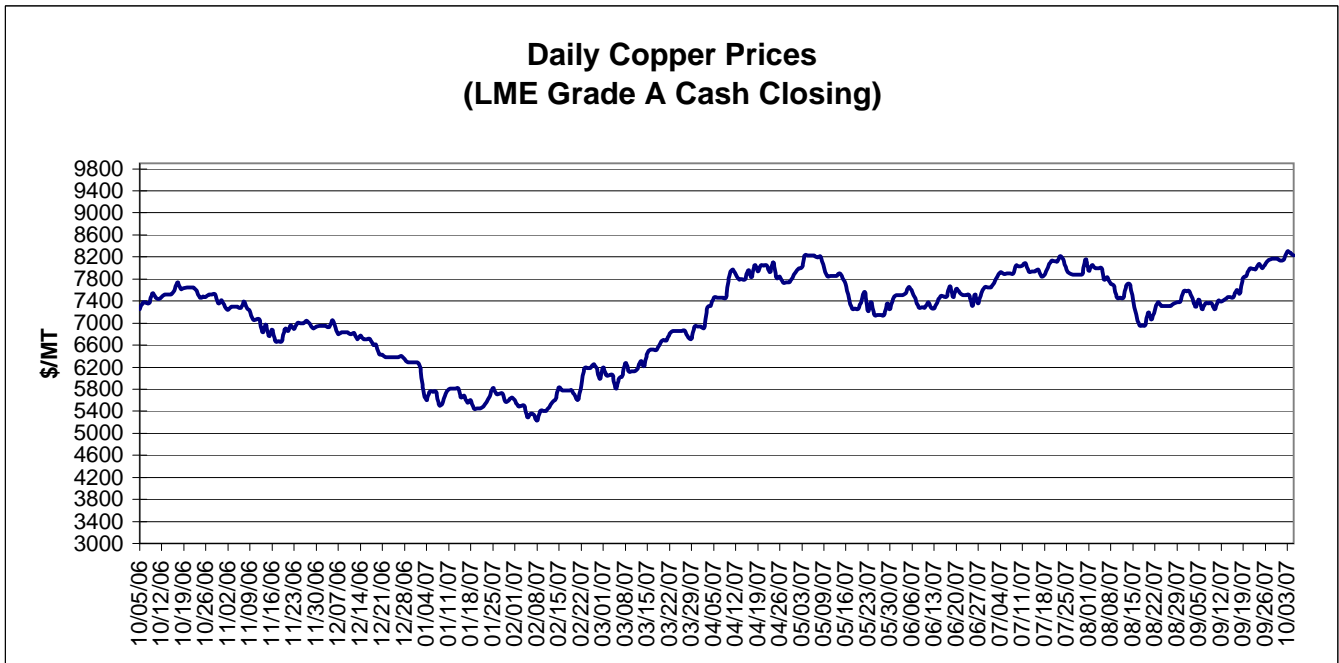


MONTHLY RAW STEEL PRODUCTION



*Steel in the first solid state after melting suitable for further processing or sale, including ingots, steel for castings and strand or pressure cast blooms, slabs, or other product forms.

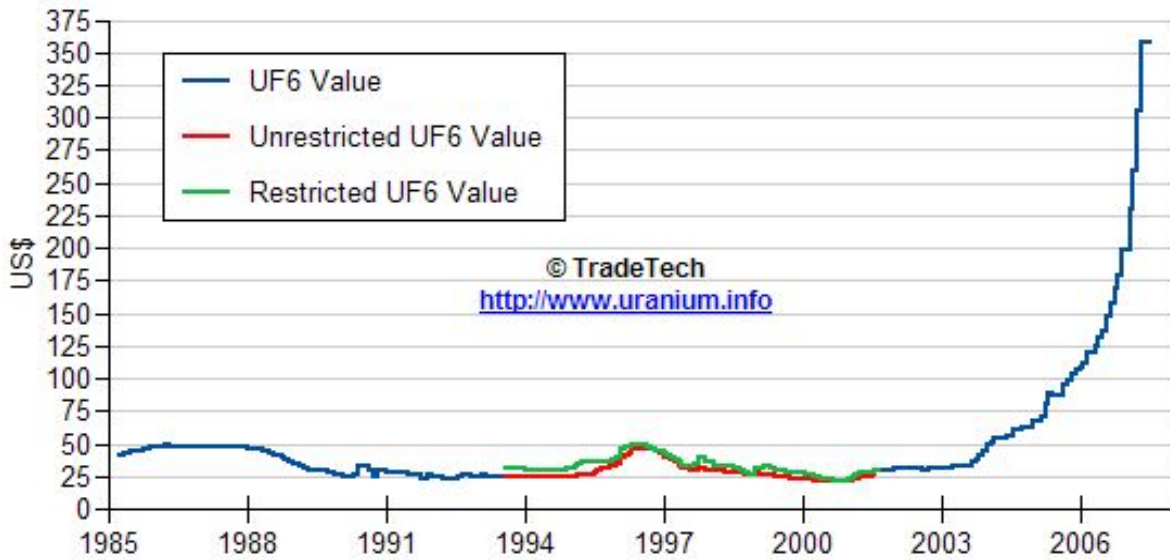
** Based on tonnage capability to produce raw steel for a sustained full order book.



Data reflect closings on weekends and holidays.

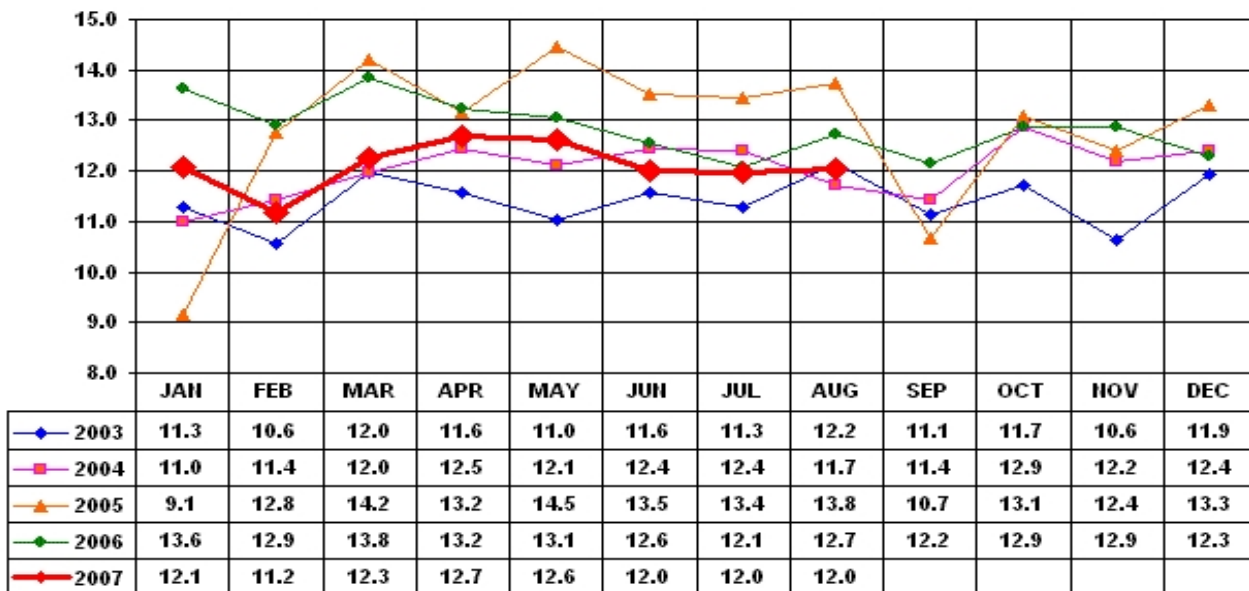
Source: Platts Metals Week

Trade Tech's Uranium (UF6) Monthly Spot Prices (US\$/kg as UF6)



Source: Trade Tech, Uranium Info Website – <http://www.uranium.info>

Coal and Coke Monthly Tonnage Indicator for Internal U.S. Waterways



Source: U.S. Army Corps of engineers, Waterborne Commerce Statistics Center