
National Mining Association

Weekly Statistical Summary

October 17, 2008 Edition
(Data for Week Ending October 11, 2008)

Prepared by
National Mining Association



Suite 500 East, 101 Constitution Avenue, NW
Washington, DC, 20001
Phone (202) 463-2600
Visit us at <http://www.nma.org>

NMA Weekly Statistical Summary

Vol. 46, No. 41
Dated 10/17/08

PRODUCTION, CONSUMPTION & TRADE						
	Week Ended			* Cumulative Jan 1 to		
	10/11/08	10/13/07	% Chng	10/11/08	10/11/07	% Chng
EIA Coal Production (000 Tons):						
Week Ended/Year to Date	23,179	22,241	4.2%	907,020	894,613	1.4%
52 Weeks Ended	1,153,549	1,147,336	0.5%			
* Due to leap year, 2008 cumulative reflects one extra day of tonnage.						
Month Ended -- September	September 08/07		% Chng	Jan - Sep 08/07		% Chng
	98,782	92,404	6.9%	870,264	857,763	1.5%
MONTH ENDED AND CUMULATIVE NUMBERS ARE PRELIMINARY AND SUBJECT TO CHANGE						
DOC Bituminous Coal Trade (000 Tons)						
Exports:	Aug 08/07		% Chng	Jan - Aug 08/07		% Chng
Metallurgical	2,881	3,237	-11.0%	27,489	21,125	30.1%
Steam	2,351	2,172	8.2%	22,690	15,697	44.5%
Imports:	3,144	3,716	-15.4%	22,335	24,280	-8.0%
	Week Ended			* Cumulative Jan 1 to		
	10/11/08	10/13/07	% Chng	10/11/08	10/13/07	% Chng
EEl Electric Output (Mil. Kwh)	72,660	77,585	-6.3%	3,241,546	3,273,479	-1.0%
AISI Raw Steel Output (000 Tons)	1,869	2,112	-11.5%	85,417	84,124	1.5%
EIA U.S. PETROLEUM DATA						
4-Week Averages						
000 Barrels per Day						
PETROLEUM SUPPLY:	Week Ending			Cumulative Daily Averages		
	10/10/08	10/10/07	% Chng	2008	2007	% Chng
Domestic Crude	4,191	4,935	-15.1	4,974	5,072	-1.9
Net Imports (Incl. SPR)	9,133	10,096	-9.5	9,707	10,041	-3.3
SPR Stocks W/D or Added	181	-68	--	-20	-16	--
Other Stocks W/D or added	-589	253	--	-70	8	--
Natural Gas Liquids Prod.	2,105	2,427	-13.3	2,254	2,377	-5.2



NMA

THE AMERICAN RESOURCE National Mining Association Web Site: [http:// www.nma.org](http://www.nma.org)

EIA Estimated Weekly U.S. Coal Production Overview (Thousand Short Tons)

Coal-Producing Region and State	Week Ended			Year to Date			52 Weeks Ended		
	10/11/2008	10/4/2008	10/13/2007	10/11/2008	10/11/2007	Percent Change	10/11/2008	10/13/2007	Percent Change
Alabama	412	386	404	16,127	15,246	5.8	20,320	19,100	6.4
Alaska	27	28	27	1,098	1,014	8.3	1,403	1,347	4.1
Arizona	160	157	159	5,926	6,398	-7.4	7,479	8,160	-8.3
Arkansas	1	1	1	46	63	-27.6	65	71	-9.0
Colorado	711	810	726	28,172	28,557	-1.3	35,808	36,556	-2.0
Illinois	618	597	495	23,997	27,054	-11.3	29,689	34,216	-13.2
Indiana	745	701	657	27,637	27,592	0.2	34,903	35,299	-1.1
Kansas	6	6	7	236	332	-28.9	323	456	-29.2
Kentucky Total	2,288	2,377	2,166	93,916	90,937	3.3	118,046	115,683	2.0
Eastern	1,706	1,794	1,656	70,828	68,814	2.9	88,930	87,631	1.5
Western	581	583	510	23,088	22,123	4.4	29,116	28,052	3.8
Louisiana	89	94	94	3,013	2,136	41.0	3,979	3,091	28.7
Maryland	58	41	69	1,817	1,786	1.7	2,318	2,373	-2.3
Mississippi	2	70	55	2,500	2,870	-12.9	3,161	3,651	-13.4
Missouri	6	4	6	173	183	-5.4	225	249	-9.8
Montana	914	839	869	33,240	32,850	1.2	43,544	42,225	3.1
New Mexico	632	496	491	19,401	19,037	1.9	24,711	24,910	-0.8
North Dakota	606	564	515	22,478	23,139	-2.9	28,842	29,977	-3.8
Ohio	496	467	483	19,455	17,424	11.7	24,499	22,267	10.0
Oklahoma	36	36	32	1,180	1,305	-9.6	1,516	1,691	-10.3
Pennsylvania Total	1,271	1,275	1,175	51,669	51,520	0.3	65,092	65,438	-0.5
Anthracite	22	24	26	1,149	1,212	-5.2	1,501	1,540	-2.5
Bituminous	1,249	1,251	1,149	50,520	50,309	0.4	63,591	63,899	-0.5
Tennessee	54	52	59	1,966	2,061	-4.6	2,549	2,632	-3.2
Texas	776	780	882	29,734	32,384	-8.2	39,053	42,119	-7.3
Utah	481	474	504	18,759	18,575	1.0	24,382	24,459	-0.3
Virginia	534	479	429	18,926	20,835	-9.2	23,458	26,952	-13.0
Washington	--	--	--	--	--	--	0	314	-100.0
West Virginia Total	3,219	3,140	2,815	125,745	121,209	3.7	157,440	152,808	3.0
Northern	837	815	760	32,629	33,728	-3.3	40,955	42,136	-2.8
Southern	2,383	2,325	2,055	93,117	87,481	6.4	116,485	110,672	5.3
Wyoming	9,036	9,348	9,121	359,809	350,105	2.8	460,746	451,291	2.1
Appalachian Total	7,751	7,635	7,090	306,534	298,895	2.6	384,605	379,202	1.4
Interior Total	2,860	2,872	2,739	111,604	116,044	-3.8	142,030	148,894	-4.6
Western Total	12,568	12,716	12,412	488,882	479,674	1.9	626,913	619,240	1.2
East of Miss. River	9,697	9,585	8,807	383,756	378,534	1.4	481,474	480,419	0.2
West of Miss. River	13,481	13,638	13,434	523,264	516,079	1.4	672,074	666,917	0.8
Bituminous and Lignite	23,157	23,199	22,215	905,871	893,402	1.4	1,152,048	1,145,796	0.5
Anthracite	22	24	26	1,149	1,212	-5.2	1,501	1,540	-2.5
U.S. Total	23,179	23,223	22,241	907,020	894,613	1.4	1,153,549	1,147,336	0.5
Railroad Cars Loaded	156,493	156,779	148,098	6,027,586	5,825,151	3.5	7,606,467	7,400,147	2.8

Source: Energy Information Administration



Volume 76 No. 41

OUTPUT FOR WEEK ENDED - Oct 11, 2008

Oct 15, 2008

The net available amount of electric energy distributed by the Total Electric Utility Industry+ for the week ended Saturday, Oct 11, 2008 was 72,660 gigawatthours (GWh), according to the Edison Electric Institute. This is equivalent to 181 on the weekly electric output index.

WEEKLY ELECTRIC OUTPUT BY GEOGRAPHIC DIVISION
(48 CONTIGUOUS STATES)

	Week Ended October 11		52 Weeks Ended October 11	
	GWh Output	% Increase Over Corresponding Week of 2007	GWh Output	% Increase Over Corresponding Period of 2007
New England	2,272	-4.5	131,805	-1.3
Mid-Atlantic	7,631	-11.1	451,894	-0.7
Central Industrial	12,203	-10.9	708,585	-1.6
West Central	6,060	-6.8	345,567	-1.6
Southeast	19,553	-8.1	1,092,863	-0.8
South Central	10,897	-6.3	603,516	1.1
Rocky Mountain	5,259	2.9	276,936	1.4
Pacific Northwest	2,895	0.5	167,546	6.3
Pacific Southwest	5,890	6.4	289,968	-1.2
Total United States	72,660	-6.3	4,068,680	-0.3

WEEKLY ELECTRIC OUTPUT IN PREVIOUS WEEKS--GWh

Week Ended	2008	Week Ended	2007	% Inc. (08/07)	52 Weeks Ended	2008	% Inc. (08/07)
Sep 20	76,962	Sep 22	79,130	-2.7	Sep 20	4,082,870	0.5
Sep 27	76,398	Sep 29	81,021	-5.7	Sep 27	4,078,247	0.2
Oct 04	74,224	Oct 06	78,867	-5.9	Oct 04	4,073,604	0.0
Oct 11	72,660	Oct 13	77,585	-6.3	Oct 11	4,068,680	-0.3
Oct 11	3,241,546	Oct 13	3,273,479	-1.0	YEAR TO DATE, FIRST 41 WEEKS		

WEEKLY ELECTRIC OUTPUT INDEX--TOTAL U.S.*
SEASONALLY ADJUSTED 1982 = 100

Week Ended	2008	Week Ended	2007	Week Ended	2006
Sep 20	175	Sep 22	175	Sep 23	172
Sep 27	184	Sep 29	189	Sep 30	172
Oct 04	181	Oct 06	187	Oct 07	179
Oct 11	181	Oct 13	192	Oct 14	172

* Excludes Alaska and Hawaii.

+ Includes investor-owned companies, cooperatives and government-owned utilities.

Copyright © 2008 Edison Electric Institute. All rights reserved.

**WEEKLY ELECTRIC OUTPUT BY GEOGRAPHIC DIVISION
(48 CONTIGUOUS STATES)**

	Week Ended			NMA CUMULATIVE JANUARY WEEK ONE TO			52 Weeks Ended		
	11-Oct 2008 GWh Output	13-Oct 2007 GWh Output	% Increase Over Corresponding Week of 2007	11-Oct 2008 GWh Output	13-Oct 2007 GWh Output	% Increase Over Corresponding Week of 2007	11-Oct 2008 GWh Output	13-Oct 2007 GWh Output	% Increase Over Corresponding Week of 2007
New England	2,272	2,378	-4.5%	104,028	106,669	-2.5%	131,805	133,564	-1.3%
Mid-Atlantic	7,631	8,581	-11.1%	359,147	365,918	-1.9%	451,894	455,190	-0.7%
Central Industrial	12,203	13,690	-10.9%	561,322	574,875	-2.4%	708,585	719,870	-1.6%
West Central	6,060	6,505	-6.8%	274,870	281,518	-2.4%	345,567	351,024	-1.6%
Southeast	19,553	21,271	-8.1%	869,567	883,365	-1.6%	1,092,863	1,101,580	-0.8%
South Central	10,897	11,631	-6.3%	490,820	485,440	1.1%	603,516	596,868	1.1%
Rocky Mountain	5,259	5,113	2.9%	217,969	218,462	-0.2%	276,936	273,240	1.4%
Pacific Northwest	2,895	2,882	0.5%	130,186	121,720	7.0%	167,546	157,680	6.3%
Pacific Southwest	5,890	5,534	6.4%	233,639	235,511	-0.8%	289,968	293,346	-1.2%
Total United States *	72,660	77,585	-6.3%	3,241,548	3,273,478	-1.0%	4,068,680	4,082,362	-0.3%

Notes: EEI output data are an estimate of electricity load made available for distribution derived as weekly net generation + purchases from non-utilities + net imports - exports - sales for resale. It is not meant to be a measure of electricity generation for the U.S. EEI survey data represent the majority of national distribution (large utilities, large government power projects, some independent and large municipal power projects). The remaining segment of the industry (smaller producers) is estimated. Non-utility generation is captured via direct sales to utilities.

* Excludes Alaska and Hawaii

** Less than one-tenth of one percent

SOURCE: Edison Electric Institute (EEI), *Weekly Electric Output Report*.

AMERICAN IRON AND STEEL INSTITUTE
 1140 Connecticut Avenue, Suite 705
 Washington, D.C. 20036

October 13, 2008

ESTIMATED WEEKLY RAW STEEL* PRODUCTION

Period	Thousand Net Tons	Percent Change from Previous Period	Percent Capability Utilization**	Production by District		
				Week Ending Oct. 11	Week Ending Oct. 4	
Week Ending				North East Coast	154	181
October 11, 2008	1,869	-3.8	78.3	Pgh/Youngstown	172	173
October 11, 2008	2,112	-11.5	88.5	Lake Erie	96	92
October 4, 2008	1,942	-2.3	81.4	Detroit	75	69
				Indiana/Chicago	472	468
				Midwest	241	259
				Southern	579	615
				Western	80	85
				Total	1,869	1,942
Year-to-Date+						
October 11, 2008	85,417	1.6	87.9			
October 11, 2008	84,124	-	86.4			

*Raw steel production tonnage included in this report is estimated based on a sampling of steel producers. Therefore, this report should be used primarily to assess production trends. The AISI production report "AIS 7," produced monthly and available by subscription, provides a more accurate summary of steel production based on data supplied by companies representing approximately 75% of U.S. production capacity.

+ Includes revisions for previous months

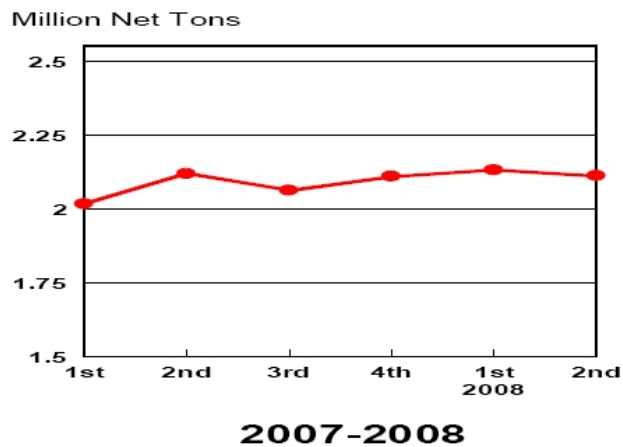
NOTE: Capability for the Third Quarter 2008 is approximately 31.4 million net tons vs 30.1 million net tons for the same period last year, and 31.0 million tons for the second quarter of 2008.

Capability -	2004 approx.	2.2 million tons/week
	2005	2.3
	2006	2.4
	2007	2.4
	2008	2.4

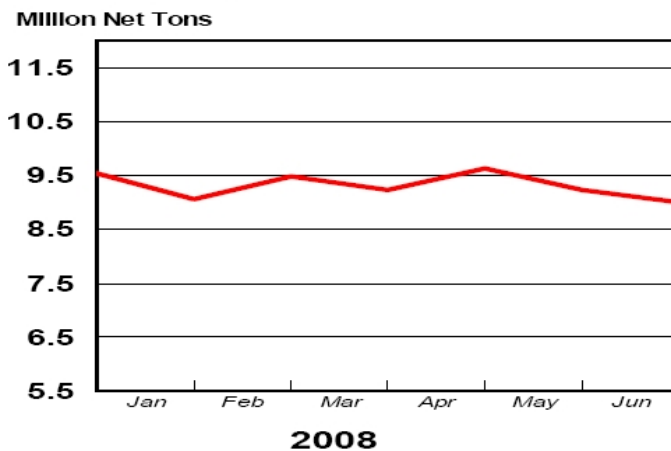
*Steel in the first solid state after melting suitable for further processing or sale, including ingots, steel for castings and strand or pressure cast blooms, slabs, or other product forms.

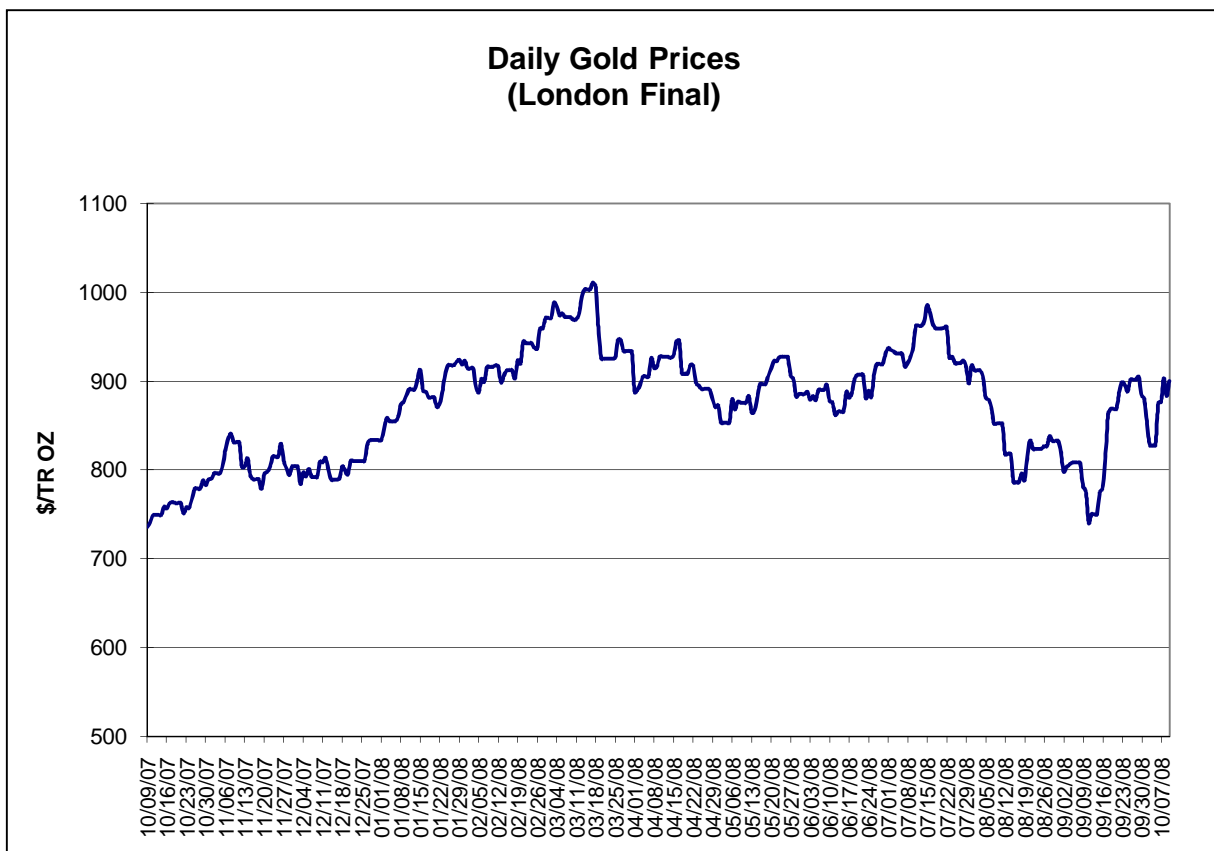
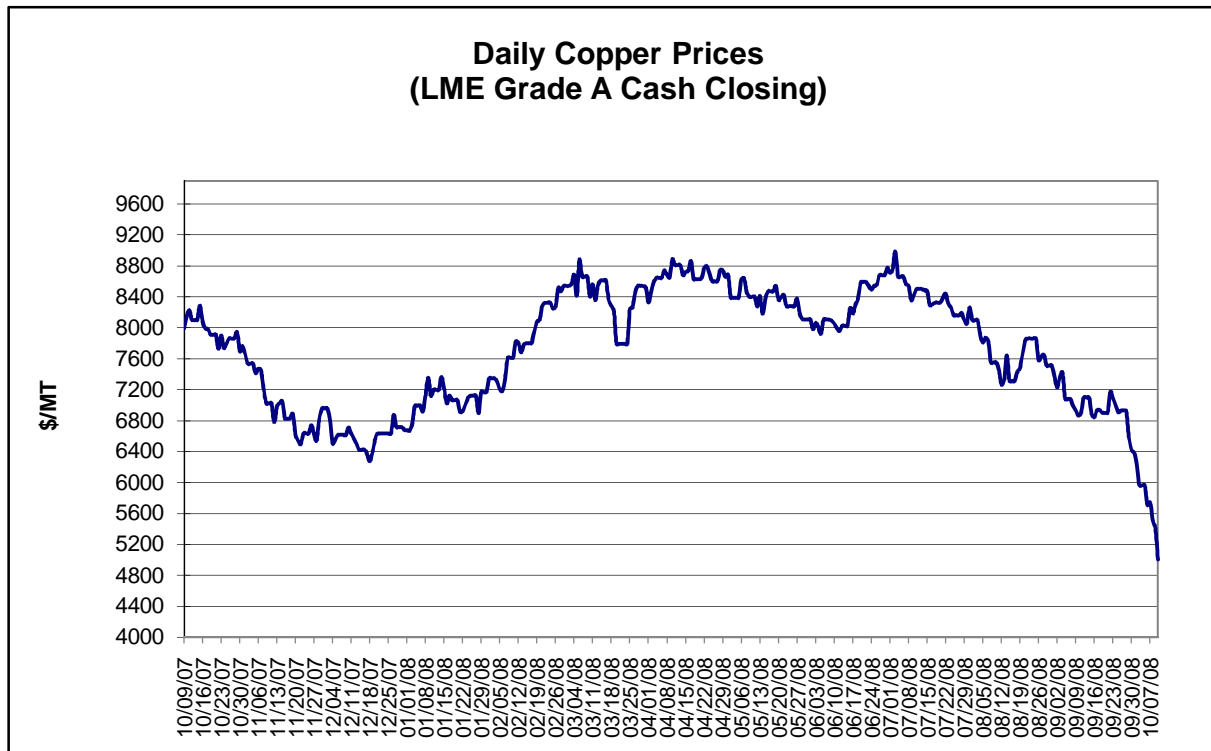
** Based on tonnage capability to produce raw steel for a sustained full order book.

Average Weekly Raw Steel Production



Monthly Raw Steel Production

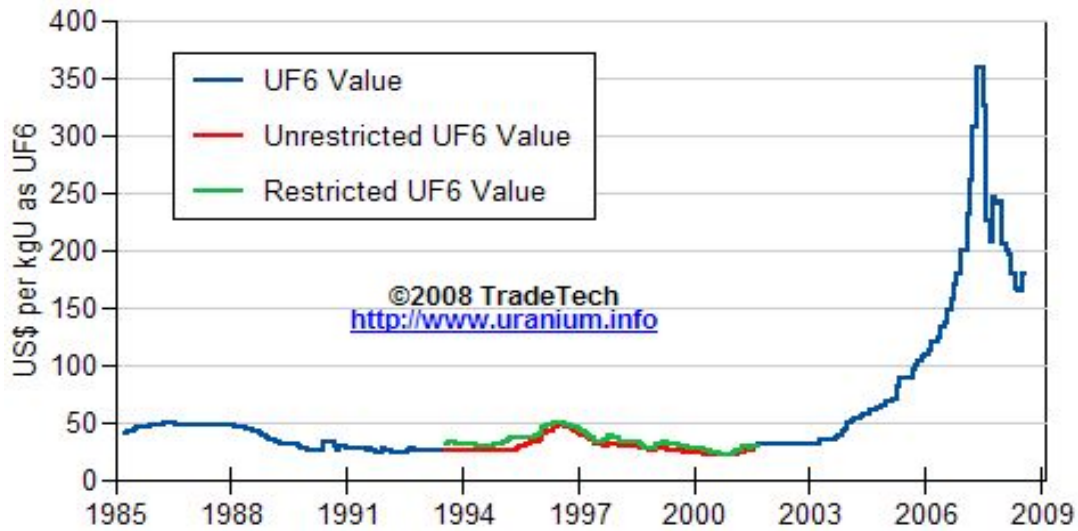




Data reflect closings on weekends and holidays.

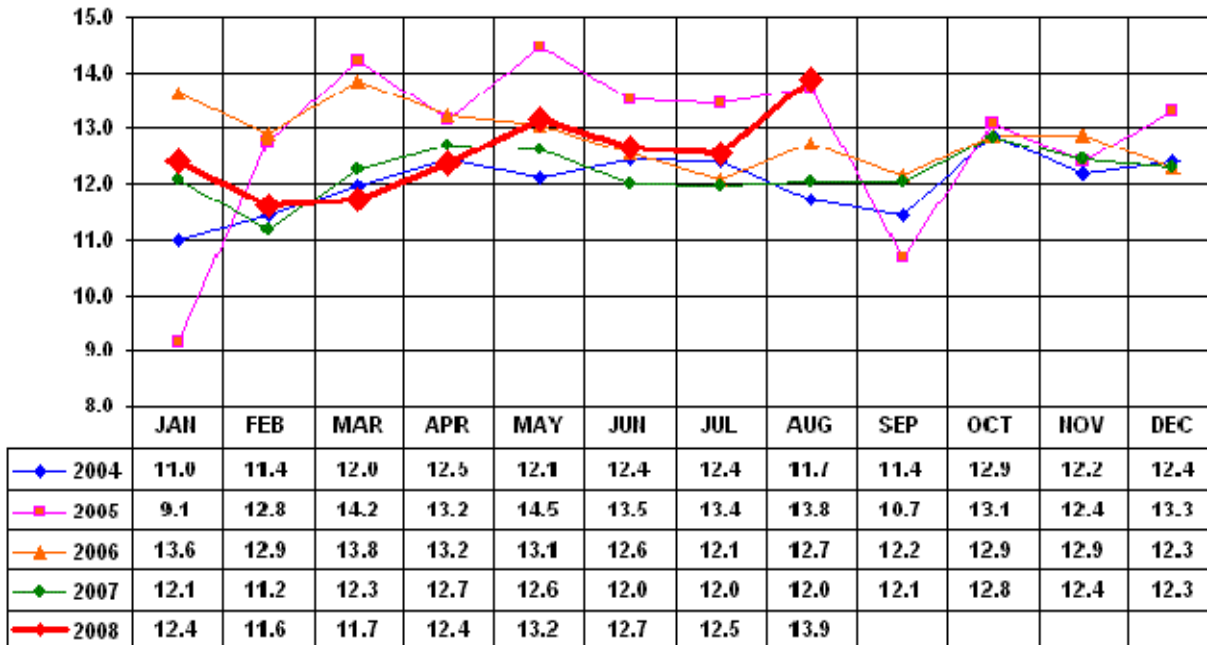
Source: Platts Metals Week

Trade Tech's Uranium (UF6) Monthly Spot Prices (US\$/kg as UF6)



Source: Trade Tech, Uranium Info Website – <http://www.uranium.info>

Coal and Coke Monthly Tonnage Indicator for Internal U.S. Waterways

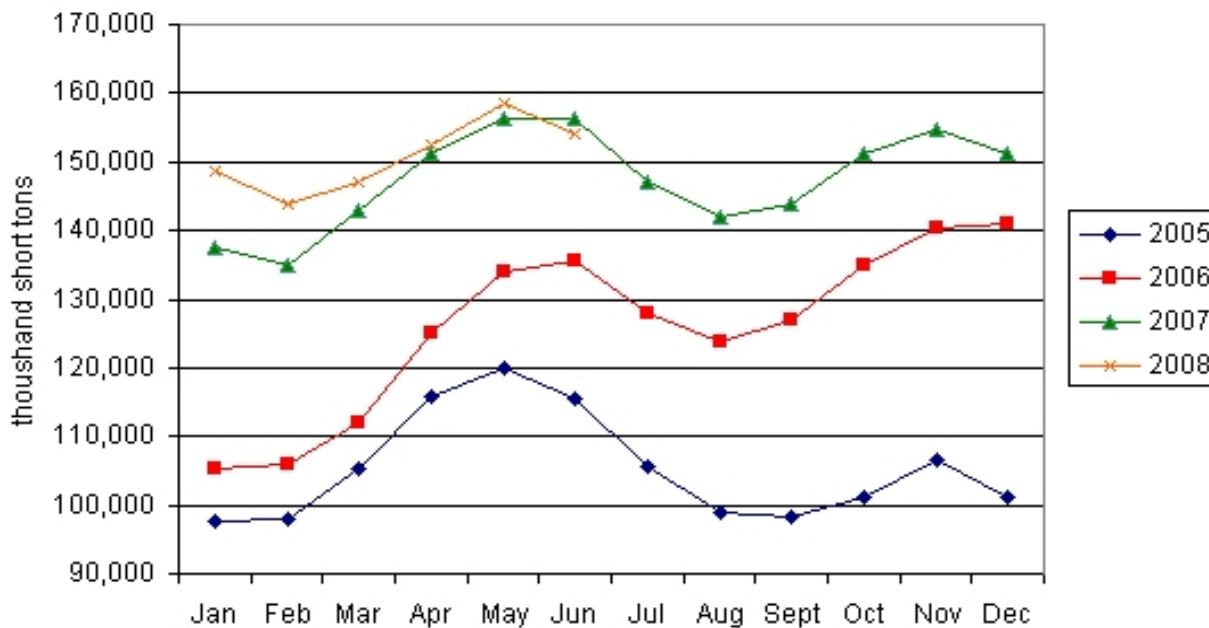


Source: U.S. Army Corps of Engineers, Waterborne Commerce Statistics Center

Average Weekly Coal Commodity Spot Prices (Dollars per Short Ton)					
Week Ended	Central Appalachia 12,500 Btu, 1.2 SO2	Northern Appalachia 13,000 Btu, <3.0 SO2	Illinois Basin 11,800 Btu, 5.0 SO2	Powder River Basin 8,800 Btu, 0.8 SO2	Uinta Basin 11,700 Btu, 0.8 SO2
29-Aug-08	\$140.00	\$144.00	\$83.00	\$11.00	\$62.00
05-Sep-08	\$140.00	\$140.00	\$83.00	\$11.00	\$61.00
12-Sep-08	\$140.00	\$140.00	\$83.00	\$11.00	\$61.00
19-Sep-08	\$140.00	\$150.00	\$84.00	\$11.25	\$61.00
26-Sep-08	\$135.00	\$150.00	\$84.00	\$11.25	\$61.00
03-Oct-08	\$133.00	\$143.00	\$84.00	\$14.50	\$61.00
10-Oct-08	\$133.00	\$138.00	\$84.00	\$14.50	\$61.00

Source: Energy Information Administration (from Platts *Coal Outlook*, "Weekly Price Survey")

EIA Electric Power Sector Coal Stocks



Source: Energy Information Administration

USGS Production of Selected Mineral Commodities	2008 Year to Date - 2nd Quarter	2007 Year to Date - 2nd Quarter	Percent Change
Aluminum, secondary (000 Mt.)	445.0	477.0	-7%
Cement (Mil. Mt.)	41.1	43.7	-6%
Gypsum (Mil. Mt.)	9.4	10.9	-14%
Iron Ore (Mil. Mt.)	26.8	25.1	7%
Phosphate rock (Mil. Mt.)	15.3	14.7	4%
Sand & gravel, construction (Mil. Mt.)	477.0	533.0	-11%
Soda ash (Mil. Mt.)	5.6	5.5	2%
Stone, crushed (Mil. Mt.)	664.0	730.0	-9%
Zinc (000 Mt.)	420.0	365.0	15%

Source: U.S. Geological Survey, Mineral Industry Surveys, *U.S. Production of Selected Mineral Commodities in the Second Quarter 2008*, August 2008