

---

National Mining Association

# Weekly Statistical Summary

October 19, 2007 Edition  
(Data for Week Ending October 13, 2007)

Prepared by  
National Mining Association



Suite 500 East, 101 Constitution Avenue, NW  
Washington, DC, 20001  
Phone (202) 463-2600  
Visit us at <http://www.nma.org>

# NMA Weekly Statistical Summary

Vol. 45, No. 41  
Dated 10/19/07

PRODUCTION, CONSUMPTION & TRADE						
	Week Ended			Cumulative Jan 1 to		
	10/13/07	10/14/06	% Chng	10/13/07	10/14/06	% Chng
<b>EIA Coal Production (000 Tons):</b>						
Week Ended/Year to Date	22,557	22,141	1.9%	900,873	913,894	-1.4%
52 Weeks Ended	1,148,103	1,152,905	-0.4%			
<b>Month Ended -- September</b>						
	September 07/06		% Chng	Jan - September 07/06		% Chng
	93,029	94,144	-1.2%	857,912	871,353	-1.5%
MONTH ENDED AND CUMULATIVE NUMBERS ARE PRELIMINARY AND SUBJECT TO CHANGE						
<b>DOC Bituminous Coal Trade (000 Tons)</b>						
<b>Exports:</b>	August 07/06		% Chng	Jan - August 07/06		% Chng
Metallurgical	3,237	2,807	15.3%	21,125	18,011	17.3%
Steam	2,172	2,277	-4.6%	15,697	13,459	16.6%
<b>Imports:</b>	3,716	3,849	-3.5%	24,280	23,943	1.4%
<b>EI Electric Output (Mil. Kwh)</b>						
	Week Ended			Cumulative Jan 1 to		
	10/13/07	10/14/06	% Chng	10/13/07	10/14/06	% Chng
EI Electric Output (Mil. Kwh)	77,585	70,492	10.1%	3,273,479	3,179,983	2.9%
<b>AISI Raw Steel Output (000 Tons)</b>	2,133	2,063	3.4%	83,664	87,682	-4.6%
<b>EIA U.S. PETROLEUM DATA</b>						
4-Week Averages 000 Barrels per Day						
<b>PETROLEUM SUPPLY:</b>						
	Week Ending			Cumulative Daily Averages		
	10/12/07	10/12/06	% Chng	2007	2006	% Chng
Domestic Crude	5,063	5,102	-0.8	5,156	5,095	1.2
Net Imports (Incl. SPR)	10,219	10,444	-2.2	10,001	10,170	-1.7
SPR Stocks W/D or Added	-86	-10	--	-17	-13	--
Other Stocks W/D or added	-111	-94	--	-23	-40	--
Natural Gas Liquids Prod.	2,405	2,407	-0.1	2,377	2,189	8.6



**NMA**

THE AMERICAN RESOURCE

National Mining Association Web Site: [http:// www.nma.org](http://www.nma.org)

## EIA Estimated Weekly U.S. Coal Production Overview (Thousand Short Tons)

Coal-Producing Region and State	Week Ended			Year to Date		52 Weeks Ended		Percent	
	10/13/2007	10/6/2007	10/14/2006	10/13/2007	10/13/2006	Change	10/13/2007	10/14/2006	Change
Alabama	388	376	362	15,481	15,249	1.5	19,252	19,340	-0.5
Alaska	26	26	31	1,192	1,097	8.6	1,520	1,366	11.2
Arizona	149	145	166	6,297	6,486	-2.9	8,028	8,838	-9.2
Arkansas	1	1	1	46	15	207.5	54	16	244.4
Colorado	740	719	739	29,172	28,436	2.6	36,980	35,930	2.9
Illinois	625	607	669	27,689	25,650	7.9	34,740	31,951	8.7
Indiana	689	669	719	28,082	27,533	2.0	35,644	34,964	1.9
Kansas	9	8	11	353	304	16.0	475	336	41.1
<b>Kentucky Total</b>	<b>2,242</b>	<b>2,177</b>	<b>2,310</b>	<b>91,872</b>	<b>96,791</b>	<b>-5.1</b>	<b>116,155</b>	<b>121,971</b>	<b>-4.8</b>
Eastern	1,682	1,634	1,757	69,274	75,359	-8.1	87,744	94,853	-7.5
Western	560	543	552	22,598	21,432	5.4	28,412	27,118	4.8
Louisiana	95	19	85	2,235	3,175	-29.6	3,166	4,089	-22.6
Maryland	100	97	55	2,646	4,480	-40.9	3,220	5,534	-41.8
Mississippi	61	86	62	2,901	3,025	-4.1	3,667	3,784	-3.1
Missouri	6	6	6	204	329	-37.9	269	471	-42.9
Montana	781	758	862	31,697	32,580	-2.7	40,836	41,042	-0.5
New Mexico	487	473	549	20,258	20,132	0.6	26,027	26,264	-0.9
North Dakota	509	495	641	22,164	23,676	-6.4	28,899	30,262	-4.5
Ohio	463	449	452	17,554	17,970	-2.3	22,291	23,235	-4.1
Oklahoma	39	38	36	1,424	1,619	-12.1	1,803	2,027	-11.1
<b>Pennsylvania Total</b>	<b>1,186</b>	<b>1,152</b>	<b>1,300</b>	<b>51,884</b>	<b>52,486</b>	<b>-1.1</b>	<b>65,556</b>	<b>67,192</b>	<b>-2.4</b>
Anthracite	27	26	30	1,192	1,215	-1.9	1,515	1,605	-5.6
Bituminous	1,160	1,126	1,270	50,692	51,271	-1.1	64,041	65,587	-2.4
Tennessee	55	53	54	2,154	2,244	-4.0	2,713	2,898	-6.4
Texas	890	864	857	33,426	35,947	-7.0	42,916	46,412	-7.5
Utah	450	437	549	19,206	20,229	-5.1	24,982	25,450	-1.8
Virginia	557	541	575	22,675	23,829	-4.8	28,697	29,374	-2.3
Washington	0	0	54	0	2,265	-100.0	314	3,228	-90.3
<b>West Virginia Total</b>	<b>2,864</b>	<b>2,782</b>	<b>2,946</b>	<b>121,670</b>	<b>121,295</b>	<b>0.3</b>	<b>152,650</b>	<b>153,116</b>	<b>-0.3</b>
Northern	887	861	785	36,091	34,133	5.7	44,333	43,264	2.5
Southern	1,977	1,920	2,162	85,579	87,162	-1.8	108,317	109,852	-1.4
Wyoming	9,145	9,154	8,051	348,591	347,050	0.4	447,250	433,813	3.1
<b>Appalachian Total</b>	<b>7,295</b>	<b>7,086</b>	<b>7,501</b>	<b>303,338</b>	<b>312,912</b>	<b>-3.1</b>	<b>382,122</b>	<b>395,543</b>	<b>-3.4</b>
<b>Interior Total</b>	<b>2,973</b>	<b>2,841</b>	<b>2,997</b>	<b>118,959</b>	<b>119,031</b>	<b>-0.1</b>	<b>151,145</b>	<b>151,168</b>	<b>*</b>
<b>Western Total</b>	<b>12,289</b>	<b>12,207</b>	<b>11,643</b>	<b>478,576</b>	<b>481,951</b>	<b>-0.7</b>	<b>614,836</b>	<b>606,194</b>	<b>1.4</b>
<b>East of Miss. River</b>	<b>9,230</b>	<b>8,991</b>	<b>9,502</b>	<b>384,608</b>	<b>390,553</b>	<b>-1.5</b>	<b>484,585</b>	<b>493,360</b>	<b>-1.8</b>
<b>West of Miss. River</b>	<b>13,327</b>	<b>13,143</b>	<b>12,639</b>	<b>516,265</b>	<b>523,341</b>	<b>-1.4</b>	<b>663,518</b>	<b>659,546</b>	<b>0.6</b>
Bituminous and Lignite	22,531	22,108	22,111	899,681	912,679	-1.4	1,146,588	1,151,301	-0.4
Anthracite	27	26	30	1,192	1,215	-1.9	1,515	1,605	-5.6
<b>U.S. Total</b>	<b>22,557</b>	<b>22,134</b>	<b>22,141</b>	<b>900,873</b>	<b>913,894</b>	<b>-1.4</b>	<b>1,148,103</b>	<b>1,152,905</b>	<b>-0.4</b>
Railroad Cars Loaded	148,098	145,302	145,419	5,825,151	5,880,361	-0.9	7,400,147	7,383,262	0.2

Source: Energy Information Administration



## WEEKLY ELECTRIC OUTPUT

Essential Energy Information from E.E.I.'s Statistics Department

Volume 75 No. 41

### OUTPUT FOR WEEK ENDED - Oct 13, 2007

Oct 17, 2007

The net available amount of electric energy distributed by the Total Electric Utility Industry\* for the week ended Saturday, Oct 13, 2007 was 77,585 gigawatthours (GWh), according to the Edison Electric Institute. This is equivalent to 192 on the weekly electric output index.

### WEEKLY ELECTRIC OUTPUT BY GEOGRAPHIC DIVISION

(48 CONTIGUOUS STATES)

	Week Ended October 13		52 Weeks Ended October 13	
	GWh Output	% Increase Over Corresponding Week of 2006	GWh Output	% Increase Over Corresponding Period of 2006
New England	2,378	2.9	133,564	0.6
Mid-Atlantic	8,581	11.3	455,190	2.0
Central Industrial	13,690	11.2	719,870	3.2
West Central	6,505	8.1	351,024	1.9
Southeast	21,271	12.6	1,101,580	2.7
South Central	11,631	12.4	596,868	-0.2
Rocky Mountain	5,113	7.7	273,240	5.7
Pacific Northwest	2,882	6.0	157,680	4.2
Pacific Southwest	5,534	1.6	293,346	0.6
Total United States	77,585	10.1	4,082,363	2.2

### WEEKLY ELECTRIC OUTPUT IN PREVIOUS WEEKS--GWh

Week Ended	2007	Week Ended	2006	% Inc. (07/06)	52 Weeks Ended	2007	% Inc. (07/06)
Sep 22	79,130	Sep 23	76,523	3.4	Sep 22	4,062,753	1.6
Sep 29	81,021	Sep 30	72,866	11.2	Sep 29	4,070,908	1.9
Oct 06	78,867	Oct 07	74,504	5.9	Oct 06	4,075,271	2.0
Oct 13	77,585	Oct 14	70,492	10.1	Oct 13	4,082,363	2.2
Oct 13	3,273,479	Oct 14	3,179,983	2.9	YEAR TO DATE, FIRST 41 WEEKS		

### WEEKLY ELECTRIC OUTPUT INDEX--TOTAL U.S.\*

SEASONALLY ADJUSTED 1982 = 100

Week Ended	2007	Week Ended	2006	Week Ended	2005
Sep 22	175	Sep 23	172	Sep 24	196
Sep 29	189	Sep 30	172	Oct 01	183
Oct 06	187	Oct 07	179	Oct 08	189
Oct 13	192	Oct 14	172	Oct 15	178

\* Excludes Alaska and Hawaii

+ Includes investor-owned companies, cooperatives and government-owned utilities.

Copyright © 2007 Edison Electric Institute. All rights reserved.

## WEEKLY ELECTRIC OUTPUT BY GEOGRAPHIC DIVISION (48 CONTIGUOUS STATES)

	Week Ended			NMA CUMULATIVE JANUARY 1 to			52 Weeks Ended		
	13-Oct	14-Oct	% Increase Over Corresponding Week of 2006	13-Oct	14-Oct	% Increase Over Corresponding Week of 2006	13-Oct	14-Oct	% Increase Over Corresponding Week of 2006
	2007	2006		2007	2006		2007	2006	
	GWh Output	GWh Output		GWh Output	GWh Output		GWh Output	GWh Output	
<b>New England</b>	2,378	2,311	2.9%	<b>106,669</b>	<b>104,929</b>	<b>1.7%</b>	133,564	132,712	0.6%
<b>Mid-Atlantic</b>	8,581	7,707	11.3%	<b>365,918</b>	<b>354,478</b>	<b>3.2%</b>	455,190	446,056	2.0%
<b>Central Industrial</b>	13,690	12,311	11.2%	<b>574,875</b>	<b>549,893</b>	<b>4.5%</b>	719,870	697,679	3.2%
<b>West Central</b>	6,505	6,020	8.1%	<b>281,518</b>	<b>274,643</b>	<b>2.5%</b>	351,024	344,581	1.9%
<b>Southeast</b>	21,271	18,883	12.6%	<b>883,365</b>	<b>853,876</b>	<b>3.5%</b>	1,101,580	1,072,346	2.7%
<b>South Central</b>	11,631	10,344	12.4%	<b>485,440</b>	<b>486,942</b>	<b>-0.3%</b>	596,868	598,349	-0.2%
<b>Rocky Mountain</b>	5,113	4,749	7.7%	<b>218,462</b>	<b>205,844</b>	<b>6.1%</b>	273,240	258,491	5.7%
<b>Pacific Northwest</b>	2,882	2,718	6.0%	<b>121,720</b>	<b>115,414</b>	<b>5.5%</b>	157,680	151,273	4.2%
<b>Pacific Southwest</b>	<u>5,534</u>	<u>5,449</u>	1.6%	<u><b>235,511</b></u>	<u><b>233,967</b></u>	<b>0.7%</b>	<u>293,346</u>	<u>291,542</u>	0.6%
<b>Total United States *</b>	<u>77,585</u>	<u>70,492</u>	10.1%	<u><b>3,273,478</b></u>	<u><b>3,179,986</b></u>	<b>2.9%</b>	<u>4,082,362</u>	<u>3,993,029</u>	2.2%

**Notes:** EEI output data are an estimate of electricity load made available for distribution derived as weekly net generation + purchases from non-utilities + net imports - exports - sales for resale. It is not meant to be a measure of electricity generation for the U.S. EEI survey data represent the majority of national distribution (large utilities, large government power projects, some independent and large municipal power projects). The remaining segment of the industry (smaller producers) is estimated. Non-utility generation is captured via direct sales to utilities.

\* Excludes Alaska and Hawaii

\*\* Less than one-tenth of one percent

SOURCE: Edison Electric Institute (EEI), *Weekly Electric Output Report*.

AMERICAN IRON AND STEEL INSTITUTE  
 1140 Connecticut Avenue, Suite 705  
 Washington, D.C. 20036

October 15, 2007

**ESTIMATED WEEKLY RAW STEEL\* PRODUCTION**

<u>Period</u>	<u>Thousand Net Tons</u>	<u>Percent Change from Previous Period</u>	<u>Percent Capacity Utilization**</u>	<u>Production by District</u>		
				<u>Week Ending</u>		
<u>Week Ending</u>				<u>Oct 13</u>	<u>Oct 6</u>	
Oct. 13, 2007	2,133	-0.1	89.4	146	140	
Oct. 13, 2006	2,063	3.3	86.2	203	199	
Oct. 6, 2007	2,137	0.5	90.1	108	103	
				130	135	
				571	561	
				254	250	
				631	657	
				<u>90</u>	<u>92</u>	
				2133	2137	

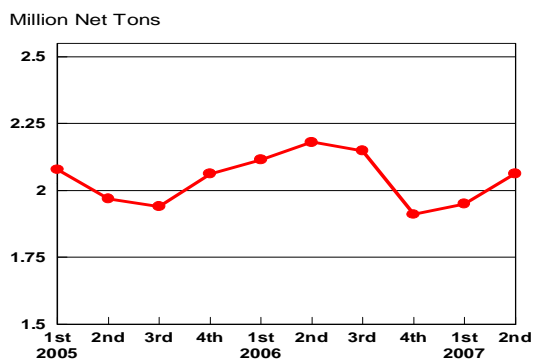
\*Raw steel production tonnage included in this report is estimated based on a sampling of steel producers. Therefore, this report should be used primarily to assess production trends. The AISI production report "AIS 7," produced monthly and available by subscription, provides a more accurate summary of steel production based on data supplied by companies representing approximately 75% of U.S. production capacity.

+Includes revisions for previous months

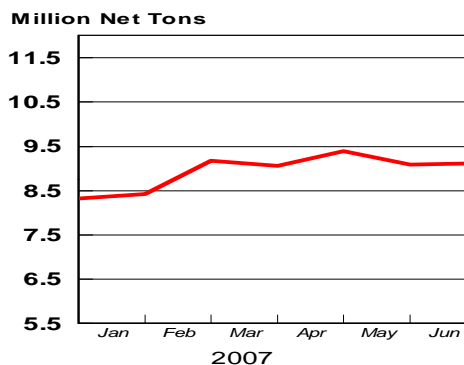
NOTE: Capacity for the First Quarter 2007 is approximately 31.2 million net tons vs 30.5 million net tons for the same period last year, and 30.7 million tons for the fourth quarter of 2006.

Capacity -	2003 approx.	2.3 million tons/week
	2004	2.2
	2005	2.3
	2006	2.4
	2007	2.4

**Average Weekly Raw Steel Production**

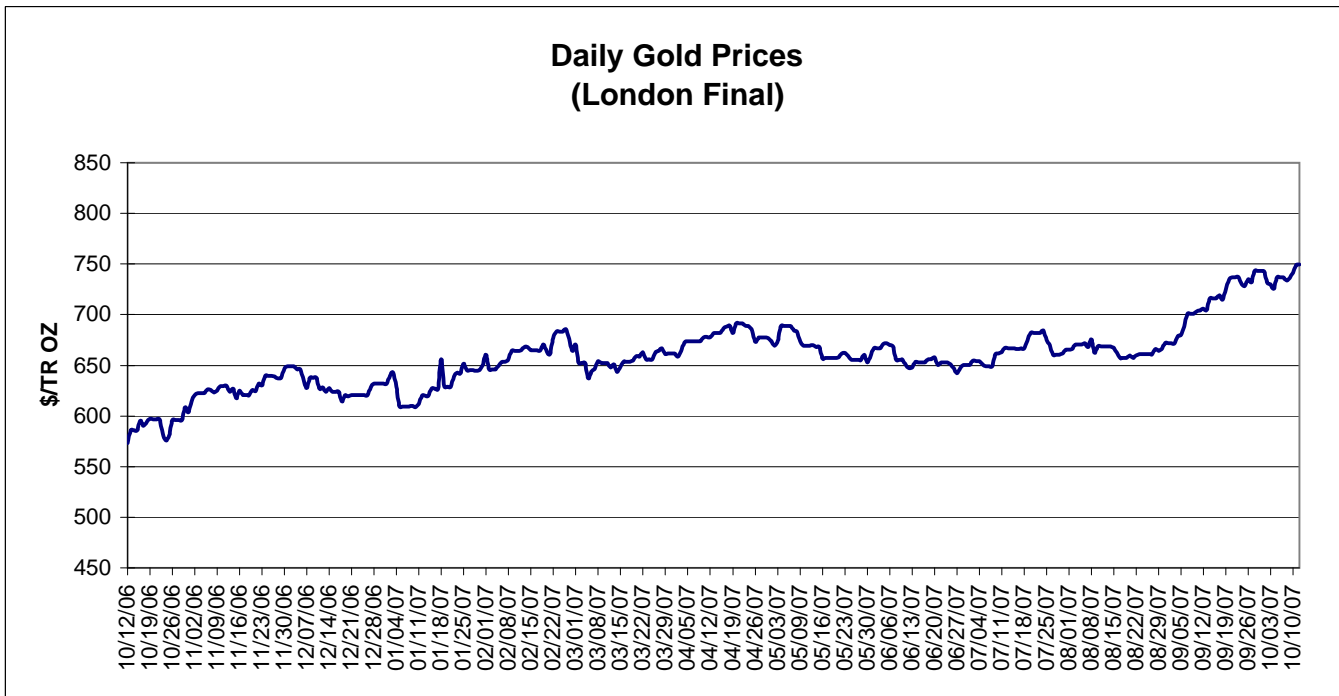
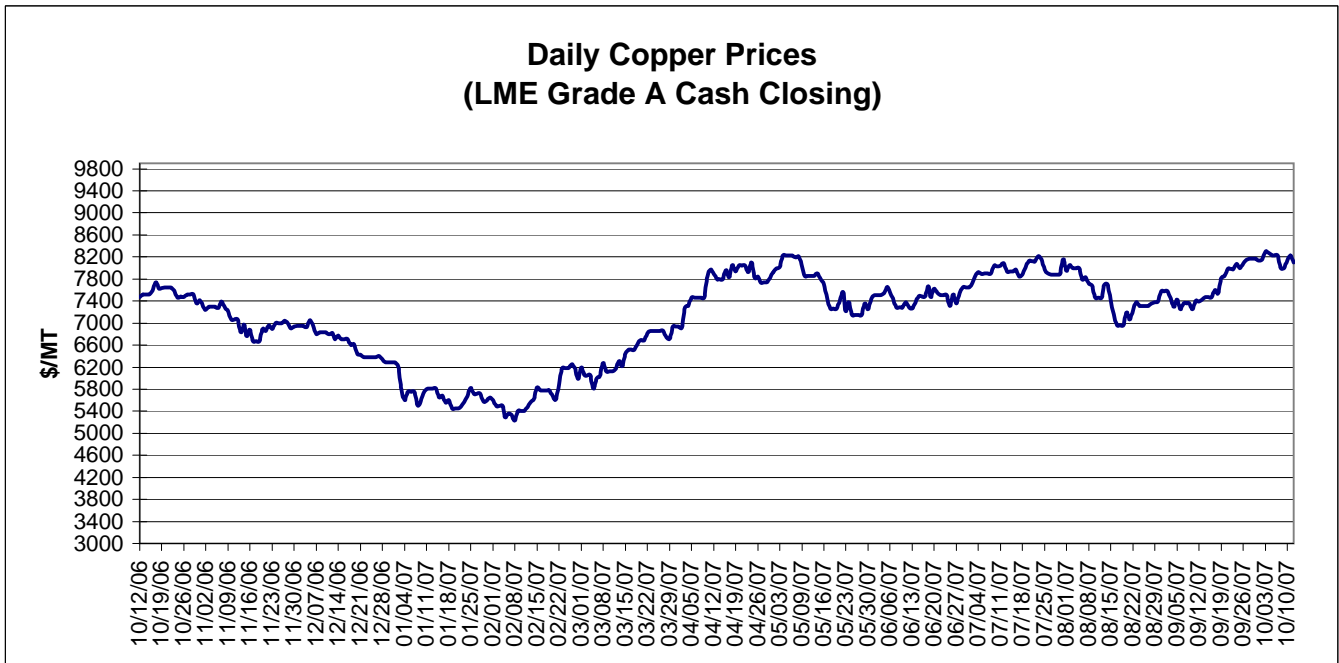


**MONTHLY RAW STEEL PRODUCTION**



\*Steel in the first solid state after melting suitable for further processing or sale, including ingots, steel for castings and strand or pressure cast blooms, slabs, or other product forms.

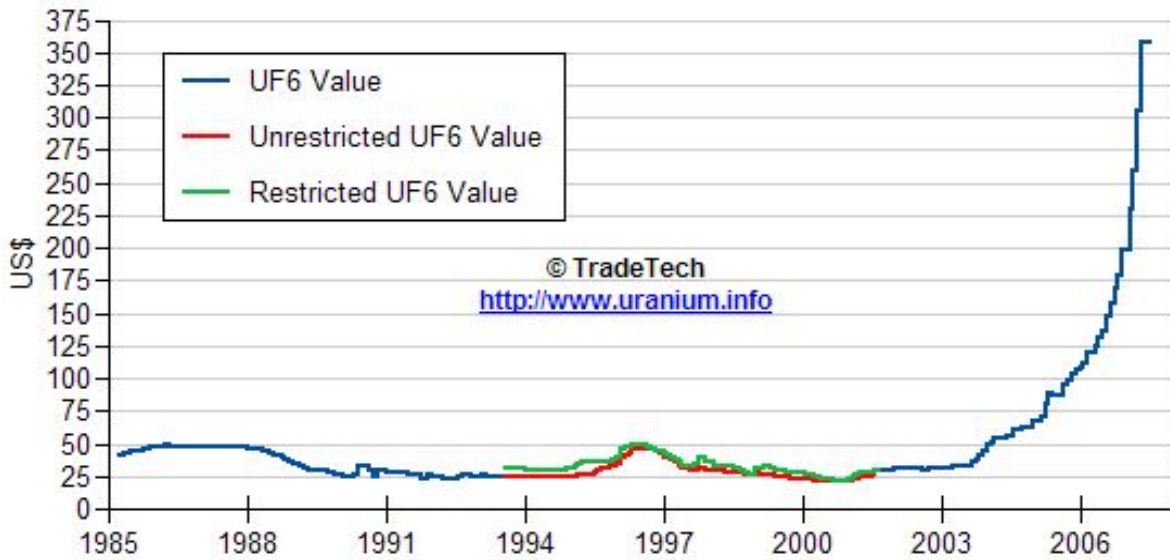
\*\* Based on tonnage capability to produce raw steel for a sustained full order book.



Data reflect closings on weekends and holidays.

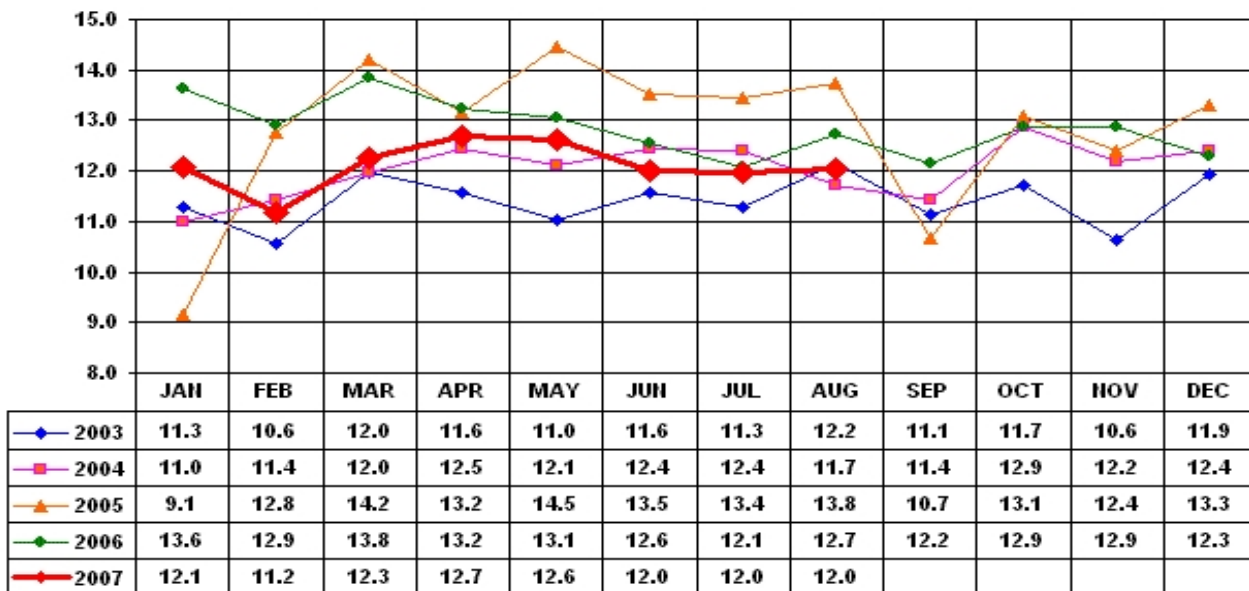
Source: Platts Metals Week

### Trade Tech's Uranium (UF6) Monthly Spot Prices (US\$/kg as UF6)



Source: Trade Tech, Uranium Info Website – <http://www.uranium.info>

### Coal and Coke Monthly Tonnage Indicator for Internal U.S. Waterways



Source: U.S. Army Corps of engineers, Waterborne Commerce Statistics Center