

---

National Mining Association

# Weekly Statistical Summary

October 24, 2008 Edition  
(Data for Week Ending October 18, 2008)

Prepared by  
National Mining Association



Suite 500 East, 101 Constitution Avenue, NW  
Washington, DC, 20001  
Phone (202) 463-2600  
Visit us at <http://www.nma.org>

# NMA Weekly Statistical Summary

Vol. 46, No. 42  
Dated 10/24/08

PRODUCTION, CONSUMPTION & TRADE						
	Week Ended			* Cumulative Jan 1 to		
	10/18/08	10/20/07	% Chng	10/18/08	10/18/07	% Chng
<b>EIA Coal Production (000 Tons):</b>						
Week Ended/Year to Date	22,763	21,694	4.9%	929,782	916,458	1.5%
52 Weeks Ended	1,154,617	1,146,380	0.7%			
* Due to leap year, 2008 cumulative reflects one extra day of tonnage.						
	September 08/07		% Chng	Jan - Sep 08/07		% Chng
<b>Month Ended -- September</b>	98,782	92,404	6.9%	870,264	857,763	1.5%
MONTH ENDED AND CUMULATIVE NUMBERS ARE PRELIMINARY AND SUBJECT TO CHANGE						
DOC Bituminous Coal Trade (000 Tons)						
	Aug 08/07		% Chng	Jan - Aug 08/07		% Chng
<b>Exports:</b>						
Metallurgical	2,881	3,237	-11.0%	27,489	21,125	30.1%
Steam	2,351	2,172	8.2%	22,690	15,697	44.5%
<b>Imports:</b>	3,144	3,716	-15.4%	22,335	24,280	-8.0%
	Week Ended			* Cumulative Jan 1 to		
	10/18/08	10/20/07	% Chng	10/18/08	10/20/07	% Chng
<b>EEl Electric Output (Mil. Kwh)</b>	72,773	73,975	-1.6%	3,314,319	3,347,454	-1.0%
<b>AISI Raw Steel Output (000 Tons)</b>	1,744	2,112	-17.4%	87,161	86,236	1.1%
EIA U.S. PETROLEUM DATA						
4-Week Averages 000 Barrels per Day						
	Week Ending			Cumulative Daily Averages		
	10/17/08	10/17/07	% Chng	2008	2007	% Chng
<b>PETROLEUM SUPPLY:</b>						
Domestic Crude	4,366	4,975	-12.2	4,965	5,071	-2.1
Net Imports (Incl. SPR)	9,947	9,958	-0.1	9,723	10,034	-3.1
SPR Stocks W/D or Added	139	-59	--	-18	-17	--
Other Stocks W/D or added	-757	206	--	-79	11	--
Natural Gas Liquids Prod.	2,214	2,435	-9.1	2,255	2,379	-5.2



**NMA**

THE AMERICAN RESOURCE National Mining Association Web Site: [http:// www.nma.org](http://www.nma.org)

## EIA Estimated Weekly U.S. Coal Production Overview (Thousand Short Tons)

Coal-Producing Region and State	Week Ended			Year to Date			52 Weeks Ended		
	10/18/2008	10/11/2008	10/20/2007	10/18/2008	10/18/2007	Percent Change	10/18/2008	10/20/2007	Percent Change
Alabama	401	412	377	16,528	15,629	5.8	20,344	19,105	6.5
Alaska	27	27	29	1,125	1,042	7.9	1,401	1,343	4.2
Arizona	156	160	138	6,082	6,539	-7.0	7,497	8,127	-7.8
Arkansas	1	1	2	47	65	-27.6	64	72	-10.9
Colorado	692	711	682	28,863	29,251	-1.3	35,817	36,481	-1.8
Illinois	601	618	513	24,598	27,563	-10.8	29,777	34,042	-12.5
Indiana	725	745	649	28,361	28,243	0.4	34,979	35,210	-0.7
Kansas	6	6	8	242	340	-28.8	321	452	-29.1
<b>Kentucky Total</b>	<b>2,225</b>	<b>2,288</b>	<b>2,165</b>	<b>96,141</b>	<b>93,102</b>	<b>3.3</b>	<b>118,106</b>	<b>115,478</b>	<b>2.3</b>
Eastern	1,659	1,706	1,624	72,488	70,445	2.9	88,965	87,452	1.7
Western	565	581	541	23,653	22,657	4.4	29,141	28,026	4.0
Louisiana	92	89	90	3,105	2,228	39.4	3,980	3,124	27.4
Maryland	56	58	49	1,873	1,839	1.8	2,325	2,366	-1.7
Mississippi	0	2	84	2,500	2,947	-15.2	3,076	3,668	-16.1
Missouri	6	6	5	179	188	-4.8	226	248	-8.6
Montana	889	914	914	34,129	33,751	1.1	43,519	42,254	3.0
New Mexico	615	632	480	20,016	19,520	2.5	24,845	24,827	0.1
North Dakota	589	606	570	23,067	23,699	-2.7	28,861	29,890	-3.4
Ohio	483	496	448	19,938	17,880	11.5	24,534	22,252	10.3
Oklahoma	35	36	30	1,215	1,336	-9.1	1,521	1,684	-9.7
<b>Pennsylvania Total</b>	<b>1,236</b>	<b>1,271</b>	<b>1,205</b>	<b>52,904</b>	<b>52,719</b>	<b>0.4</b>	<b>65,122</b>	<b>65,309</b>	<b>-0.3</b>
Anthracite	21	22	32	1,170	1,242	-5.8	1,490	1,541	-3.3
Bituminous	1,215	1,249	1,173	51,734	51,477	0.5	63,633	63,769	-0.2
Tennessee	52	54	53	2,019	2,114	-4.5	2,548	2,629	-3.1
Texas	754	776	836	30,488	33,233	-8.3	38,971	42,076	-7.4
Utah	468	481	509	19,226	19,083	0.8	24,341	24,404	-0.3
Virginia	520	534	415	19,446	21,253	-8.5	23,563	26,777	-12.0
Washington	--	--	--	--	--	--	0	259	-100.0
<b>West Virginia Total</b>	<b>3,131</b>	<b>3,219</b>	<b>2,834</b>	<b>128,876</b>	<b>124,039</b>	<b>3.9</b>	<b>157,737</b>	<b>152,620</b>	<b>3.4</b>
Northern	814	837	748	33,442	34,479	-3.0	41,020	42,079	-2.5
Southern	2,317	2,383	2,086	95,434	89,560	6.6	116,716	110,541	5.6
Wyoming	9,005	9,036	8,610	368,814	358,856	2.8	461,141	451,681	2.1
<b>Appalachian Total</b>	<b>7,538</b>	<b>7,751</b>	<b>7,004</b>	<b>314,071</b>	<b>305,918</b>	<b>2.7</b>	<b>385,139</b>	<b>378,511</b>	<b>1.8</b>
<b>Interior Total</b>	<b>2,785</b>	<b>2,860</b>	<b>2,758</b>	<b>114,389</b>	<b>118,799</b>	<b>-3.7</b>	<b>142,057</b>	<b>148,602</b>	<b>-4.4</b>
<b>Western Total</b>	<b>12,440</b>	<b>12,568</b>	<b>11,932</b>	<b>501,321</b>	<b>491,741</b>	<b>1.9</b>	<b>627,421</b>	<b>619,266</b>	<b>1.3</b>
<b>East of Miss. River</b>	<b>9,429</b>	<b>9,697</b>	<b>8,791</b>	<b>393,184</b>	<b>387,327</b>	<b>1.5</b>	<b>482,112</b>	<b>479,458</b>	<b>0.6</b>
<b>West of Miss. River</b>	<b>13,334</b>	<b>13,481</b>	<b>12,903</b>	<b>536,598</b>	<b>529,131</b>	<b>1.4</b>	<b>672,505</b>	<b>666,922</b>	<b>0.8</b>
Bituminous and Lignite	22,742	23,157	21,662	928,612	915,215	1.5	1,153,127	1,144,839	0.7
Anthracite	21	22	32	1,170	1,242	-5.8	1,490	1,541	-3.3
<b>U.S. Total</b>	<b>22,763</b>	<b>23,179</b>	<b>21,694</b>	<b>929,782</b>	<b>916,458</b>	<b>1.5</b>	<b>1,154,617</b>	<b>1,146,380</b>	<b>0.7</b>
Railroad Cars Loaded	152,546	156,493	144,457	6,180,132	5,969,608	3.5	7,614,556	7,394,226	3.0

Source: Energy Information Administration



## WEEKLY ELECTRIC OUTPUT

Essential Energy Information from EEL's Statistics Department

Volume 76 No. 42

### OUTPUT FOR WEEK ENDED - Oct 18, 2008

Oct 22, 2008

The net available amount of electric energy distributed by the Total Electric Utility Industry+ for the week ended Saturday, Oct 18, 2008 was 72,773 gigawatthours (GWh), according to the Edison Electric Institute. This is equivalent to 184 on the weekly electric output index.

### WEEKLY ELECTRIC OUTPUT BY GEOGRAPHIC DIVISION

(48 CONTIGUOUS STATES)

	Week Ended October 18		52 Weeks Ended October 18	
	GWh Output	% Increase Over Corresponding Week of 2007	GWh Output	% Increase Over Corresponding Period of 2007
New England	2,250	-5.3	131,679	-1.4
Mid-Atlantic	7,766	-2.9	451,665	-0.8
Central Industrial	12,516	-0.5	708,519	-1.6
West Central	6,074	0.1	345,574	-1.6
Southeast	19,759	-3.6	1,092,134	-0.9
South Central	10,578	-4.3	603,037	0.9
Rocky Mountain	5,068	-3.1	276,776	1.1
Pacific Northwest	3,099	6.4	167,732	6.3
Pacific Southwest	5,663	7.5	290,363	-1.0
Total United States	72,773	-1.6	4,067,478	-0.4

### WEEKLY ELECTRIC OUTPUT IN PREVIOUS WEEKS--GWh

Week Ended	2008	Week Ended	2007	% Inc. (08/07)	52 Weeks Ended	2008	% Inc. (08/07)
Sep 27	76,398	Sep 29	81,021	-5.7	Sep 27	4,078,247	0.2
Oct 04	74,224	Oct 06	78,867	-5.9	Oct 04	4,073,604	0.0
Oct 11	72,660	Oct 13	77,585	-6.3	Oct 11	4,068,680	-0.3
Oct 18	72,773	Oct 20	73,975	-1.6	Oct 18	4,067,478	-0.4
Oct 18	3,314,319	Oct 20	3,347,454	-1.0	YEAR TO DATE, FIRST 42 WEEKS		

### WEEKLY ELECTRIC OUTPUT INDEX--TOTAL U.S.\*

SEASONALLY ADJUSTED 1982 = 100

Week Ended	2008	Week Ended	2007	Week Ended	2006
Sep 27	184	Sep 29	189	Sep 30	172
Oct 04	181	Oct 06	187	Oct 07	179
Oct 11	181	Oct 13	192	Oct 14	172
Oct 18	184	Oct 20	186	Oct 21	178

\* Excludes Alaska and Hawaii.

+ Includes investor-owned companies, cooperatives and government-owned utilities.

Copyright © 2008 Edison Electric Institute. All rights reserved.

### WEEKLY ELECTRIC OUTPUT BY GEOGRAPHIC DIVISION (48 CONTIGUOUS STATES)

	Week Ended			NMA CUMULATIVE JANUARY WEEK ONE TO			52 Weeks Ended		
	18-Oct 2008 GWh Output	20-Oct 2007 GWh Output	% Increase Over Corresponding Week of 2007	18-Oct 2008 GWh Output	20-Oct 2007 GWh Output	% Increase Over Corresponding Week of 2007	18-Oct 2008 GWh Output	20-Oct 2007 GWh Output	% Increase Over Corresponding Week of 2007
<b>New England</b>	2,250	2,376	-5.3%	<b>106,278</b>	<b>109,045</b>	<b>-2.5%</b>	131,679	133,592	-1.4%
<b>Mid-Atlantic</b>	7,766	7,996	-2.9%	<b>366,913</b>	<b>373,914</b>	<b>-1.9%</b>	451,665	455,374	-0.8%
<b>Central Industrial</b>	12,516	12,582	-0.5%	<b>573,838</b>	<b>587,457</b>	<b>-2.3%</b>	708,519	719,832	-1.6%
<b>West Central</b>	6,074	6,066	0.1%	<b>280,944</b>	<b>287,584</b>	<b>-2.3%</b>	345,574	351,032	-1.6%
<b>Southeast</b>	19,759	20,487	-3.6%	<b>889,326</b>	<b>903,852</b>	<b>-1.6%</b>	1,092,134	1,102,385	-0.9%
<b>South Central</b>	10,578	11,057	-4.3%	<b>501,398</b>	<b>496,497</b>	<b>1.0%</b>	603,037	597,650	0.9%
<b>Rocky Mountain</b>	5,068	5,229	-3.1%	<b>223,037</b>	<b>223,691</b>	<b>-0.3%</b>	276,776	273,779	1.1%
<b>Pacific Northwest</b>	3,099	2,913	6.4%	<b>133,285</b>	<b>124,633</b>	<b>6.9%</b>	167,732	157,801	6.3%
<b>Pacific Southwest</b>	5,663	5,269	7.5%	<b>239,302</b>	<b>240,780</b>	<b>-0.6%</b>	290,363	293,236	-1.0%
<b>Total United States *</b>	<u>72,773</u>	<u>73,975</u>	-1.6%	<b>3,314,321</b>	<b>3,347,453</b>	<b>-1.0%</b>	4,067,479	4,084,681	-0.4%

**Notes:** EEI output data are an estimate of electricity load made available for distribution derived as weekly net generation + purchases from non-utilities + net imports - exports - sales for resale. It is not meant to be a measure of electricity generation for the U.S. EEI survey data represent the majority of national distribution (large utilities, large government power projects, some independent and large municipal power projects). The remaining segment of the industry (smaller producers) is estimated. Non-utility generation is captured via direct sales to utilities.

\* Excludes Alaska and Hawaii

\*\* Less than one-tenth of one percent

SOURCE: Edison Electric Institute (EEI), *Weekly Electric Output Report*.

AMERICAN IRON AND STEEL INSTITUTE  
 1140 Connecticut Avenue, Suite 705  
 Washington, D.C. 20036

October 20, 2008

**ESTIMATED WEEKLY RAW STEEL\* PRODUCTION**

Period	Thousand Net Tons	Percent Change from Previous Period	Percent Capability Utilization**	Production by District		
				Week Ending Oct. 18	Week Ending Oct. 11	
<b>Week Ending</b>				North East Coast	152	154
October 18, 2008	1,744	-6.7	73.1	Pgh/Youngstown	170	172
October 18, 2007	2,112	-17.5	88.5	Lake Erie	93	96
October 11, 2008	1,869	-3.8	78.3	Detroit	73	75
				Indiana/Chicago	428	472
				Midwest	213	241
				Southern	540	579
				Western	75	80
				<b>Total</b>	<b>1,744</b>	<b>1,869</b>
<b>Year-to-Date+</b>						
October 18, 2008	87,161	1.1	87.9			
October 18, 2007	86,236	-	86.4			

\*Raw steel production tonnage included in this report is estimated based on a sampling of steel producers. Therefore, this report should be used primarily to assess production trends. The AISI production report "AIS 7," produced monthly and available by subscription, provides a more accurate summary of steel production based on data supplied by companies representing approximately 75% of U.S. production capacity.

+ Includes revisions for previous months

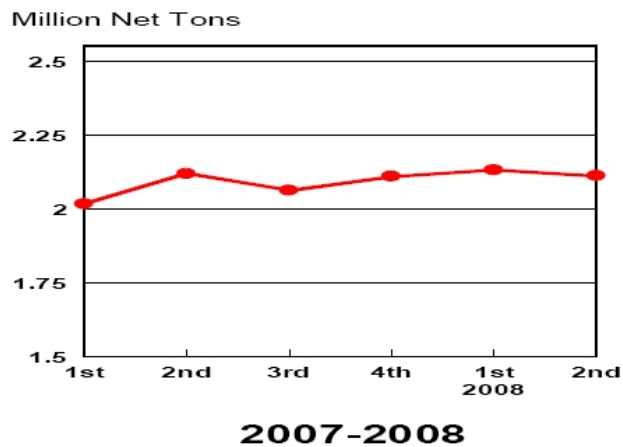
NOTE: Capability for the Third Quarter 2008 is approximately 31.4 million net tons vs 30.1 million net tons for the same period last year, and 31.0 million tons for the second quarter of 2008.

Capability -	2004 approx.	2.2 million tons/week
	2005	2.3
	2006	2.4
	2007	2.4
	2008	2.4

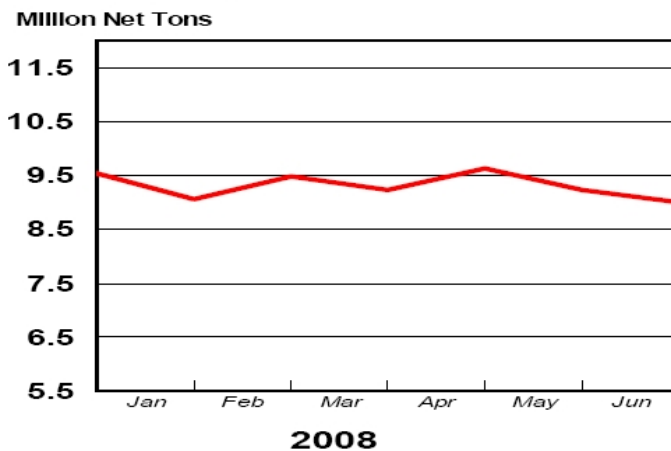
\*Steel in the first solid state after melting suitable for further processing or sale, including ingots, steel for castings and strand or pressure cast blooms, slabs, or other product forms.

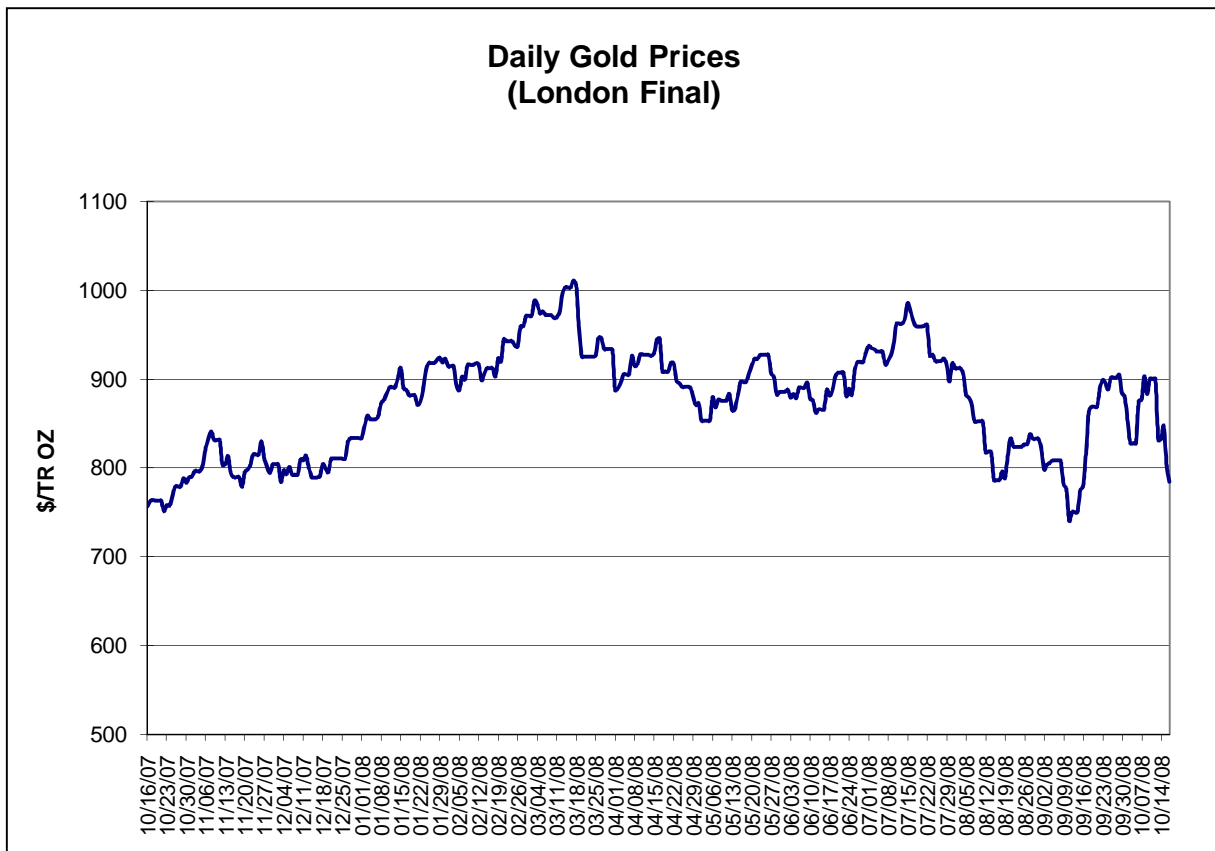
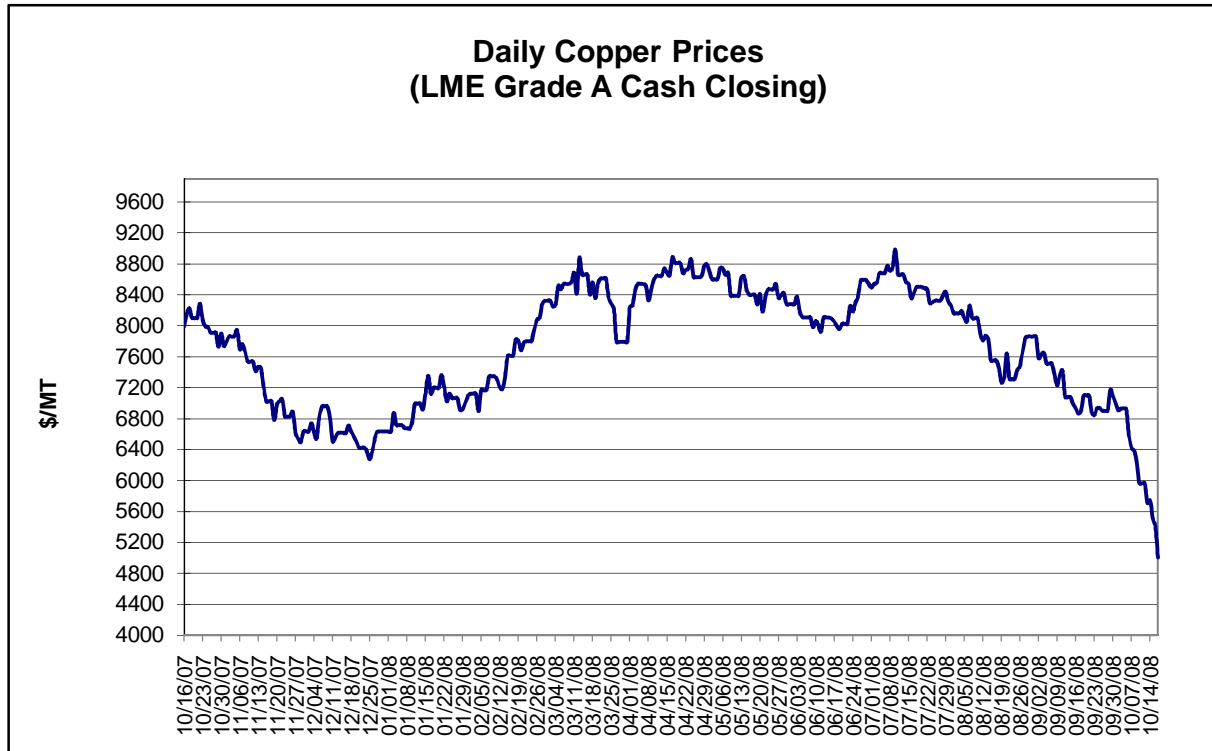
\*\* Based on tonnage capability to produce raw steel for a sustained full order book.

**Average Weekly Raw Steel Production**



**Monthly Raw Steel Production**

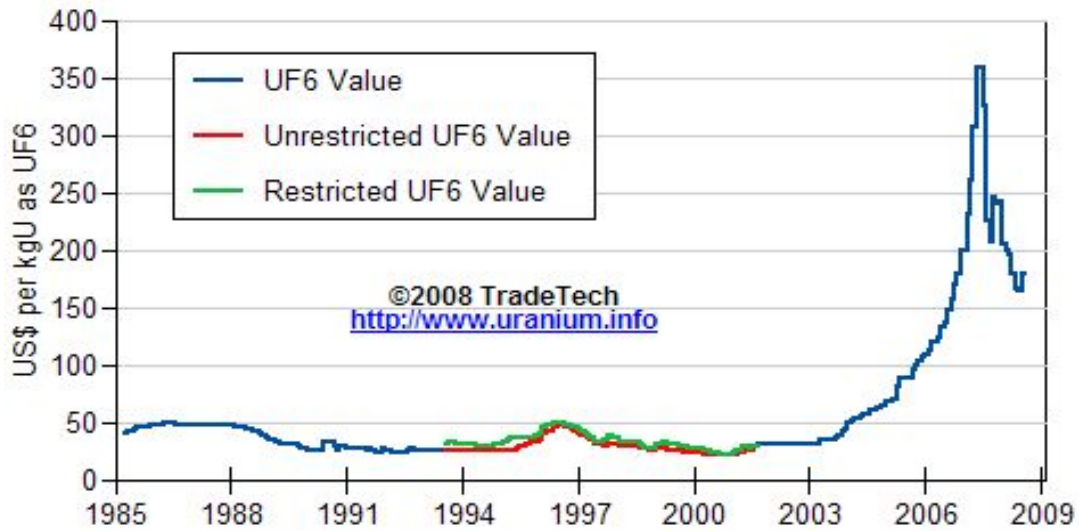




Data reflect closings on weekends and holidays.

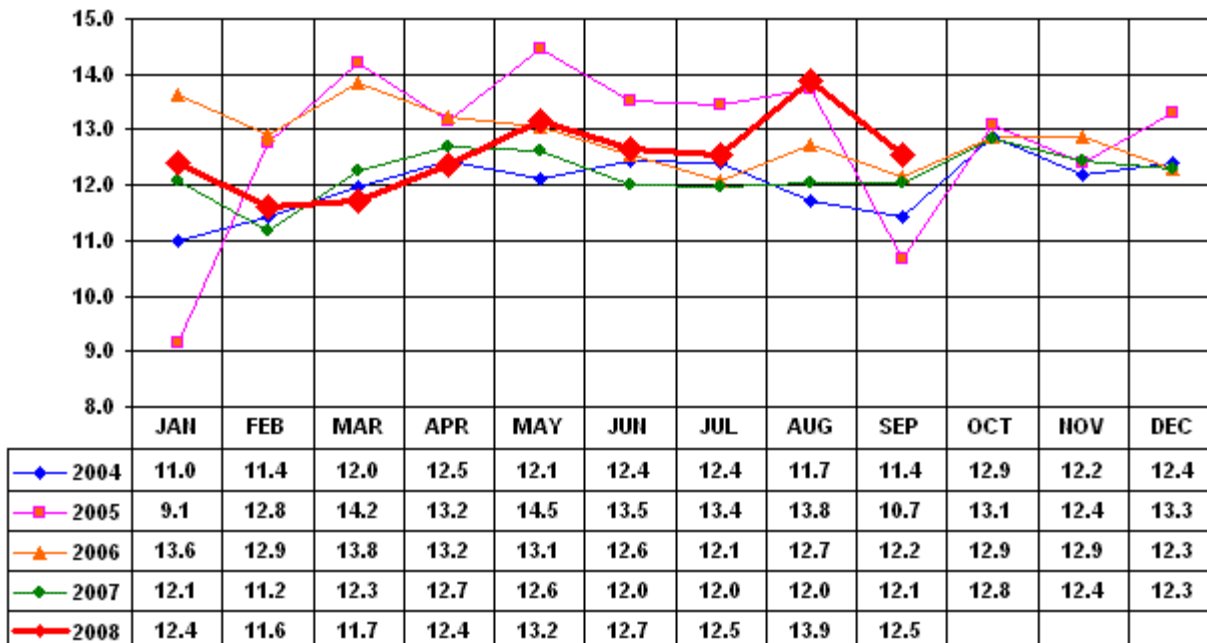
Source: Platts Metals Week

### Trade Tech's Uranium (UF6) Monthly Spot Prices (US\$/kg as UF6)



Source: Trade Tech, Uranium Info Website – <http://www.uranium.info>

### Coal and Coke Monthly Tonnage Indicator for Internal U.S. Waterways

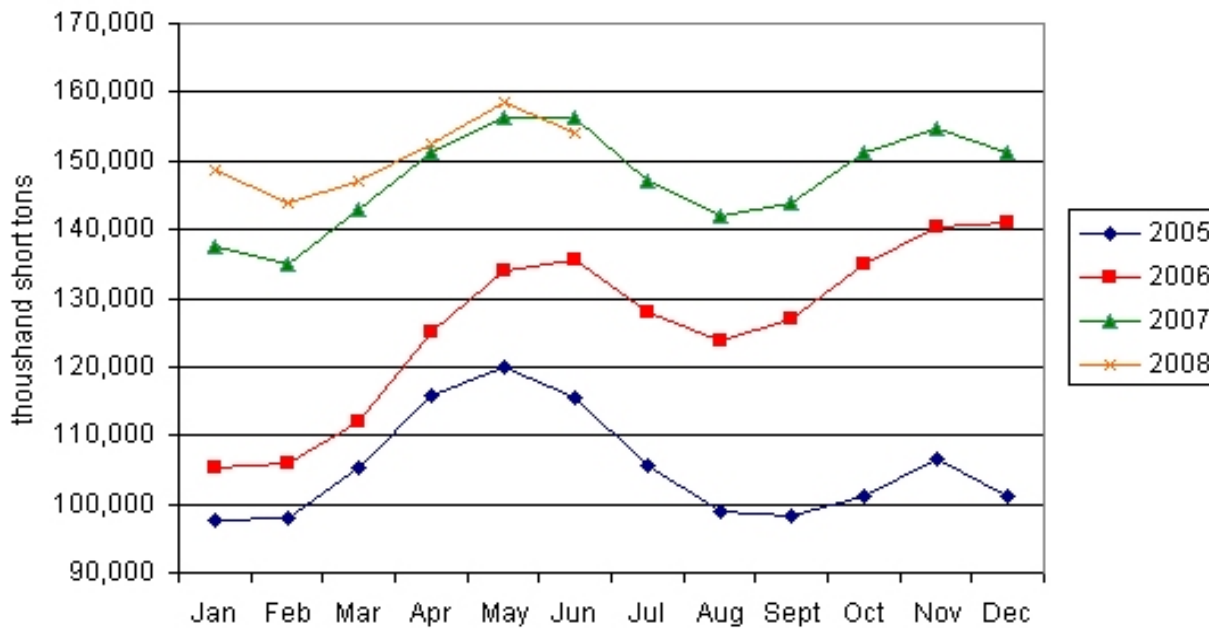


Source: U.S. Army Corps of Engineers, Waterborne Commerce Statistics Center

Average Weekly Coal Commodity Spot Prices (Dollars per Short Ton)					
Week Ended	Central Appalachia 12,500 Btu, 1.2 SO2	Northern Appalachia 13,000 Btu, <3.0 SO2	Illinois Basin 11,800 Btu, 5.0 SO2	Powder River Basin 8,800 Btu, 0.8 SO2	Uinta Basin 11,700 Btu, 0.8 SO2
05-Sep-08	\$140.00	\$140.00	\$83.00	\$11.00	\$61.00
12-Sep-08	\$140.00	\$140.00	\$83.00	\$11.00	\$61.00
19-Sep-08	\$140.00	\$150.00	\$84.00	\$11.25	\$61.00
26-Sep-08	\$135.00	\$150.00	\$84.00	\$11.25	\$61.00
03-Oct-08	\$133.00	\$143.00	\$84.00	\$14.50	\$61.00
10-Oct-08	\$133.00	\$138.00	\$84.00	\$14.50	\$61.00
17-Oct-08	\$133.00	\$138.00	\$84.00	\$14.50	\$61.00

Source: Energy Information Administration (from Platts *Coal Outlook*, "Weekly Price Survey")

### EIA Electric Power Sector Coal Stocks



Source: Energy Information Administration

<b>USGS Production of Selected Mineral Commodities</b>	<b>2008 Year to Date - 2nd Quarter</b>	<b>2007 Year to Date - 2nd Quarter</b>	<b>Percent Change</b>
Aluminum, secondary (000 Mt.)	445.0	477.0	-7%
Cement (Mil. Mt.)	41.1	43.7	-6%
Gypsum (Mil. Mt.)	9.4	10.9	-14%
Iron Ore (Mil. Mt.)	26.8	25.1	7%
Phosphate rock (Mil. Mt.)	15.3	14.7	4%
Sand & gravel, construction (Mil. Mt.)	477.0	533.0	-11%
Soda ash (Mil. Mt.)	5.6	5.5	2%
Stone, crushed (Mil. Mt.)	664.0	730.0	-9%
Zinc (000 Mt.)	420.0	365.0	15%

Source: U.S. Geological Survey, Mineral Industry Surveys, *U.S. Production of Selected Mineral Commodities in the Second Quarter 2008*, August 2008