
National Mining Association

Weekly Statistical Summary

October 26, 2007 Edition
(Data for Week Ending October 20, 2007)

Prepared by
National Mining Association



Suite 500 East, 101 Constitution Avenue, NW
Washington, DC, 20001
Phone (202) 463-2600
Visit us at <http://www.nma.org>

NMA Weekly Statistical Summary

Vol. 45, No. 42
Dated 10/26/07

PRODUCTION, CONSUMPTION & TRADE						
	Week Ended			Cumulative Jan 1 to		
	10/20/07	10/21/06	% Chng	10/20/07	10/21/06	% Chng
EIA Coal Production (000 Tons):						
Week Ended/Year to Date	22,000	22,651	1.9%	922,874	936,510	-1.4%
52 Weeks Ended	1,147,453	1,153,358	-0.4%			
Month Ended -- September						
	September 07/06		% Chng	Jan - Sep 07/06		% Chng
	93,029	94,144	-1.2%	857,912	871,353	-1.5%
MONTH ENDED AND CUMULATIVE NUMBERS ARE PRELIMINARY AND SUBJECT TO CHANGE						
DOC Bituminous Coal Trade (000 Tons)						
Exports:	August 07/06			Jan - Aug 07/06		
			% Chng			% Chng
Metallurgical	3,237	2,807	15.3%	21,125	18,011	17.3%
Steam	2,172	2,277	-4.6%	15,697	13,459	16.6%
Imports:	3,716	3,849	-3.5%	24,280	23,943	1.4%
EI Electric Output (Mil. Kwh)						
	Week Ended			Cumulative Jan 1 to		
	10/20/07	10/21/06	% Chng	10/20/07	10/21/06	% Chng
EI Electric Output (Mil. Kwh)	73,975	71,658	3.2%	3,347,454	3,251,642	2.9%
AISI Raw Steel Output (000 Tons)	2,126	2,063	3.1%	85,790	89,745	-4.4%
EIA U.S. PETROLEUM DATA						
4-Week Averages 000 Barrels per Day						
PETROLEUM SUPPLY:						
	Week Ending			Cumulative Daily Averages		
	10/19/07	10/19/06	% Chng	2007	2006	% Chng
Domestic Crude	5,087	5,081	0.1	5,155	5,095	1.2
Net Imports (Incl. SPR)	9,884	10,291	-4.0	9,979	10,168	-1.9
SPR Stocks W/D or Added	-47	-16	--	-18	-13	--
Other Stocks W/D or added	144	-136	--	-4	-44	--
Natural Gas Liquids Prod.	2,447	2,369	3.3	2,380	2,192	8.6



NMA

THE AMERICAN RESOURCE

National Mining Association Web Site: [http:// www.nma.org](http://www.nma.org)

EIA Estimated Weekly U.S. Coal Production Overview (Thousand Short Tons)

Coal-Producing Region and State	Week Ended			Year to Date			52 Weeks Ended		
	10/20/2007	10/13/2007	10/21/2006	10/20/2007	10/20/2006	Percent Change	10/20/2007	10/21/2006	Percent Change
Alabama	361	388	372	15,843	15,620	1.4	19,242	19,319	-0.4
Alaska	28	26	32	1,220	1,129	8.0	1,516	1,373	10.4
Arizona	129	149	170	6,426	6,656	-3.5	7,986	8,781	-9.0
Arkansas	1	1	1	48	16	204.9	55	16	238.1
Colorado	696	740	758	29,868	29,191	2.3	36,919	35,962	2.7
Illinois	647	625	686	28,335	26,336	7.6	34,700	32,052	8.3
Indiana	680	689	738	28,762	28,270	1.7	35,587	35,014	1.6
Kansas	10	9	11	362	315	14.9	473	345	36.9
Kentucky Total	2,244	2,242	2,370	94,116	99,159	-5.1	116,030	121,941	-4.8
Eastern	1,650	1,682	1,803	70,924	77,161	-8.1	87,591	94,811	-7.6
Western	594	560	567	23,192	21,998	5.4	28,439	27,129	4.8
Louisiana	91	95	58	2,327	3,236	-28.1	3,199	4,101	-22.0
Maryland	71	100	56	2,717	4,536	-40.1	3,235	5,493	-41.1
Mississippi	93	61	67	2,995	3,092	-3.1	3,694	3,784	-2.4
Missouri	4	6	6	209	336	-37.8	267	464	-42.5
Montana	821	781	885	32,518	33,462	-2.8	40,772	41,133	-0.9
New Mexico	477	487	564	20,734	20,696	0.2	25,940	26,261	-1.2
North Dakota	564	509	658	22,728	24,334	-6.6	28,805	30,286	-4.9
Ohio	430	463	464	17,984	18,433	-2.4	22,257	23,206	-4.1
Oklahoma	37	39	37	1,461	1,656	-11.8	1,802	2,026	-11.0
Pennsylvania Total	1,217	1,186	1,334	53,101	53,819	-1.3	65,439	67,118	-2.5
Anthracite	33	27	31	1,225	1,246	-1.6	1,517	1,598	-5.1
Bituminous	1,184	1,160	1,303	51,876	52,573	-1.3	63,922	65,520	-2.4
Tennessee	49	55	55	2,202	2,299	-4.2	2,707	2,894	-6.5
Texas	844	890	879	34,270	36,823	-6.9	42,881	46,303	-7.4
Utah	455	450	564	19,661	20,792	-5.4	24,873	25,539	-2.6
Virginia	538	557	590	23,213	24,418	-4.9	28,645	29,427	-2.7
Washington	0	0	55	0	2,320	-100.0	259	3,212	-91.9
West Virginia Total	2,880	2,864	3,023	124,549	124,316	0.2	152,507	153,127	-0.4
Northern	873	887	805	36,964	34,937	5.8	44,401	43,199	2.8
Southern	2,007	1,977	2,218	87,586	89,378	-2.0	108,106	109,928	-1.7
Wyoming	8,632	9,145	8,220	357,223	355,248	0.6	447,663	434,182	3.1
Appalachian Total	7,196	7,295	7,695	310,535	320,602	-3.1	381,623	395,395	-3.5
Interior Total	3,002	2,973	3,050	121,960	122,078	-0.1	151,096	151,235	-0.1
Western Total	11,802	12,289	11,905	490,379	493,830	-0.7	614,733	606,727	1.3
East of Miss. River	9,211	9,230	9,753	393,819	400,298	-1.6	484,043	493,374	-1.9
West of Miss. River	12,790	13,327	12,898	529,055	536,212	-1.3	663,410	659,984	0.5
Bituminous and Lignite	21,967	22,531	22,620	921,648	935,264	-1.5	1,145,936	1,151,760	-0.5
Anthracite	33	27	31	1,225	1,246	-1.6	1,517	1,598	-5.1
U.S. Total	22,000	22,557	22,651	922,874	936,510	-1.5	1,147,453	1,153,358	-0.5
Railroad Cars Loaded	144,457	148,098	150,378	5,969,608	6,030,739	-1.0	7,394,226	7,391,055	*

Source: Energy Information Administration



Volume 75 No. 42

OUTPUT FOR WEEK ENDED - Oct 20, 2007

Oct 24, 2007

The net available amount of electric energy distributed by the Total Electric Utility Industry+ for the week ended Saturday, Oct 20, 2007 was 73,975 gigawatthours (GWh), according to the Edison Electric Institute. This is equivalent to 186 on the weekly electric output index.

WEEKLY ELECTRIC OUTPUT BY GEOGRAPHIC DIVISION
(48 CONTIGUOUS STATES)

	Week Ended October 20		52 Weeks Ended October 20	
	GWh Output	% Increase Over Corresponding Week of 2006	GWh Output	% Increase Over Corresponding Period of 2006
New England	2,376	1.2	133,592	0.7
Mid-Atlantic	7,996	2.4	455,374	2.0
Central Industrial	12,582	-0.3	719,832	3.1
West Central	6,066	0.1	351,032	1.9
Southeast	20,487	4.1	1,102,385	2.8
South Central	11,057	7.6	597,650	-0.1
Rocky Mountain	5,229	11.5	273,779	6.0
Pacific Northwest	2,913	4.3	157,801	4.2
Pacific Southwest	5,269	-2.0	293,236	0.6
Total United States	73,975	3.2	4,084,679	2.3

WEEKLY ELECTRIC OUTPUT IN PREVIOUS WEEKS--GWh

Week Ended	2007	Week Ended	2006	% Inc. (07/06)	52 Weeks Ended	2007	% Inc. (07/06)
Sep 29	81,021	Sep 30	72,866	11.2	Sep 29	4,070,908	1.9
Oct 06	78,867	Oct 07	74,504	5.9	Oct 06	4,075,271	2.0
Oct 13	77,585	Oct 14	70,492	10.1	Oct 13	4,082,363	2.2
Oct 20	73,975	Oct 21	71,658	3.2	Oct 20	4,084,679	2.3
Oct 20	3,347,454	Oct 21	3,251,642	2.9	YEAR TO DATE, FIRST 42 WEEKS		

WEEKLY ELECTRIC OUTPUT INDEX--TOTAL U.S.*
SEASONALLY ADJUSTED 1982 = 100

Week Ended	2007	Week Ended	2006	Week Ended	2005
Sep 29	189	Sep 30	172	Oct 01	183
Oct 06	187	Oct 07	179	Oct 08	189
Oct 13	192	Oct 14	172	Oct 15	178
Oct 20	186	Oct 21	178	Oct 22	179

* Excludes Alaska and Hawaii

+ Includes investor-owned companies, cooperatives and government-owned utilities.

Copyright © 2007 Edison Electric Institute. All rights reserved.

WEEKLY ELECTRIC OUTPUT BY GEOGRAPHIC DIVISION (48 CONTIGUOUS STATES)

	Week Ended			NMA CUMULATIVE JANUARY 1 to			52 Weeks Ended		
	20-Oct 2007 GWh Output	21-Oct 2006 GWh Output	% Increase Over Corresponding Week of 2006	20-Oct 2007 GWh Output	21-Oct 2006 GWh Output	% Increase Over Corresponding Week of 2006	20-Oct 2007 GWh Output	21-Oct 2006 GWh Output	% Increase Over Corresponding Week of 2006
New England	2,376	2,348	1.2%	109,045	107,277	1.6%	133,592	132,701	0.7%
Mid-Atlantic	7,996	7,813	2.3%	373,914	362,291	3.2%	455,374	446,229	2.0%
Central Industrial	12,582	12,620	-0.3%	587,457	562,513	4.4%	719,832	697,920	3.1%
West Central	6,066	6,059	0.1%	287,584	280,702	2.5%	351,032	344,651	1.9%
Southeast	20,487	19,682	4.1%	903,852	873,558	3.5%	1,102,385	1,072,719	2.8%
South Central	11,057	10,275	7.6%	496,497	497,217	-0.1%	597,650	597,986	-0.1%
Rocky Mountain	5,229	4,690	11.5%	223,691	210,534	6.2%	273,779	258,327	6.0%
Pacific Northwest	2,913	2,792	4.3%	124,633	118,206	5.4%	157,801	151,403	4.2%
Pacific Southwest	<u>5,269</u>	<u>5,379</u>	-2.0%	<u>240,780</u>	<u>239,346</u>	0.6%	<u>293,236</u>	<u>291,557</u>	0.6%
Total United States *	73,975	71,658	3.2%	3,347,453	3,251,644	2.9%	4,084,681	3,993,493	2.3%

Notes: EEI output data are an estimate of electricity load made available for distribution derived as weekly net generation + purchases from non-utilities + net imports - exports - sales for resale. It is not meant to be a measure of electricity generation for the U.S. EEI survey data represent the majority of national distribution (large utilities, large government power projects, some independent and large municipal power projects). The remaining segment of the industry (smaller producers) is estimated. Non-utility generation is captured via direct sales to utilities.

* Excludes Alaska and Hawaii

** Less than one-tenth of one percent

SOURCE: Edison Electric Institute (EEI), *Weekly Electric Output Report*.

AMERICAN IRON AND STEEL INSTITUTE
 1140 Connecticut Avenue, Suite 705
 Washington, D.C. 20036

October 22, 2007

ESTIMATED WEEKLY RAW STEEL* PRODUCTION

<u>Period</u>	<u>Thousand Net Tons</u>	<u>Percent Change from Previous Period</u>	<u>Percent Capacity Utilization**</u>	<u>Production by District</u>		
				<u>Week Ending Oct 20</u>	<u>Oct 13</u>	
<u>Week Ending</u>				North East Coast	139	146
				Pgh/Youngstown	201	203
				Lake Erie	107	108
				Detroit	131	130
				Indiana/Chicago	558	571
				Midwest	257	254
				Southern	641	631
				Western	<u>92</u>	<u>90</u>
				Total	2126	2133
<u>Year-to-Date+</u>						
Oct. 20, 2007	2,126	-0.3	89.1			
Oct. 20, 2006	2,063	3.0	86.2			
Oct. 13, 2007	2,133	-0.1	89.4			
Oct. 20, 2007	85,790	-4.4	85.9			
Oct. 20, 2006	89,745	-	89.8			

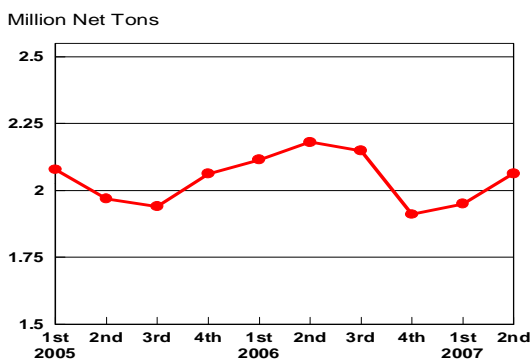
*Raw steel production tonnage included in this report is estimated based on a sampling of steel producers. Therefore, this report should be used primarily to assess production trends. The AISI production report "AIS 7," produced monthly and available by subscription, provides a more accurate summary of steel production based on data supplied by companies representing approximately 75% of U.S. production capacity.

+Includes revisions for previous months

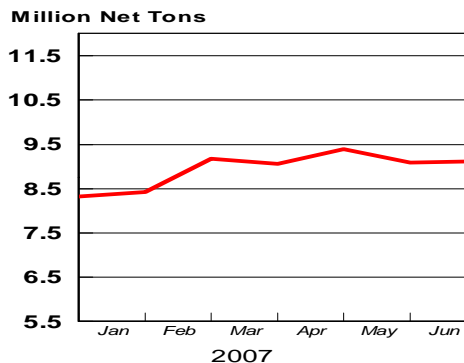
NOTE: Capacity for the Fourth Quarter 2007 is approximately 31.3 million net tons vs 30.7 million net tons for the same period last year, and 30.1 million tons for the third quarter of 2007.

Capacity -	2003 approx.	2004	2005	2006	2007
	2.3 million tons/week	2.2	2.3	2.4	2.4

Average Weekly Raw Steel Production

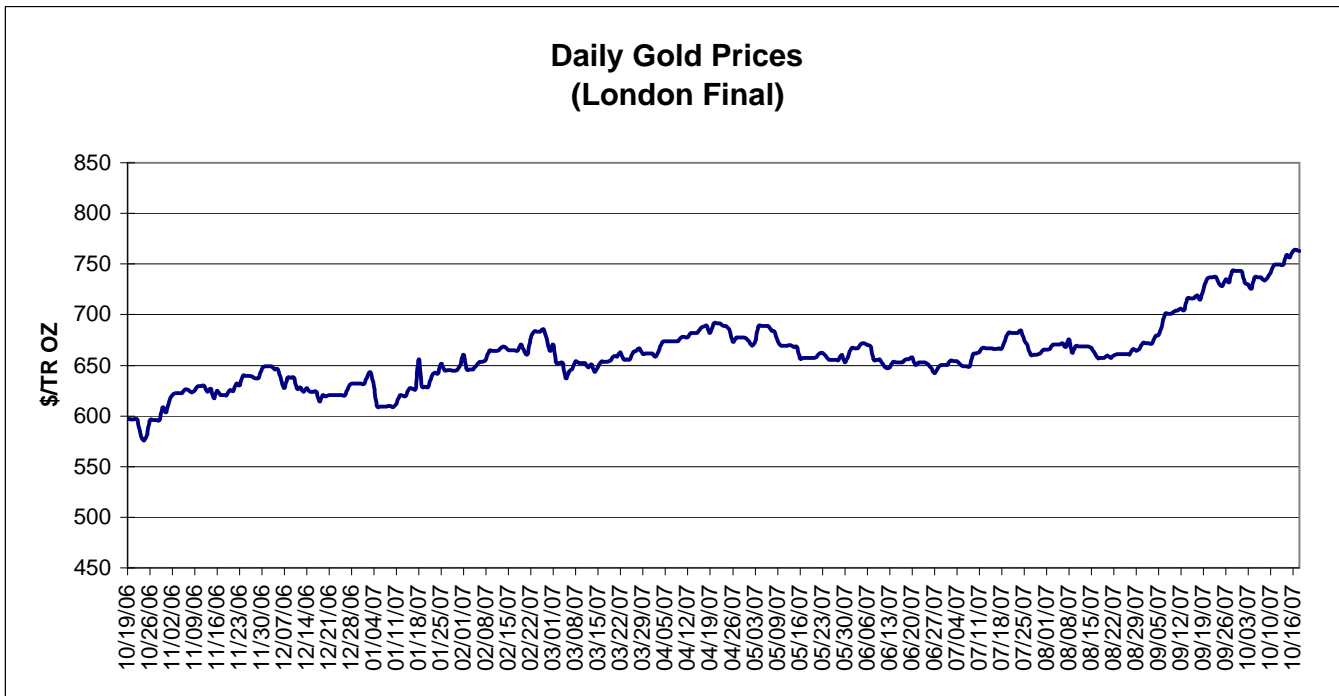
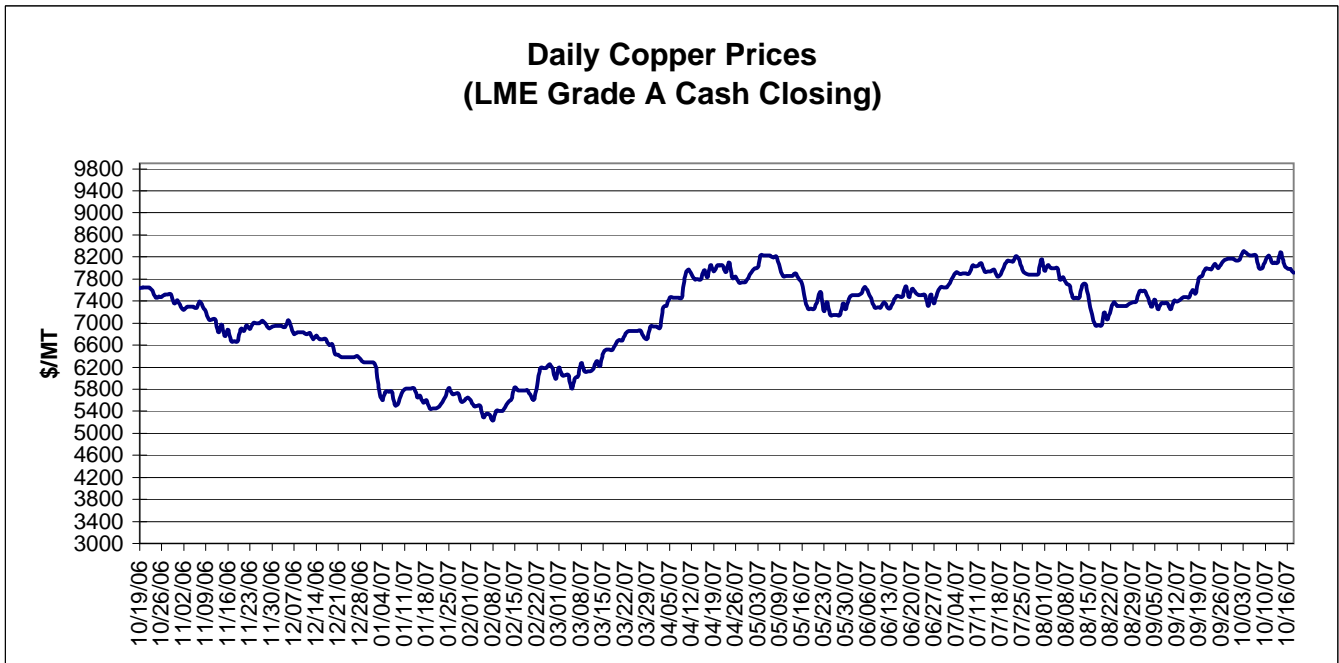


MONTHLY RAW STEEL PRODUCTION



*Steel in the first solid state after melting suitable for further processing or sale, including ingots, steel for castings and strand or pressure cast blooms, slabs, or other product forms.

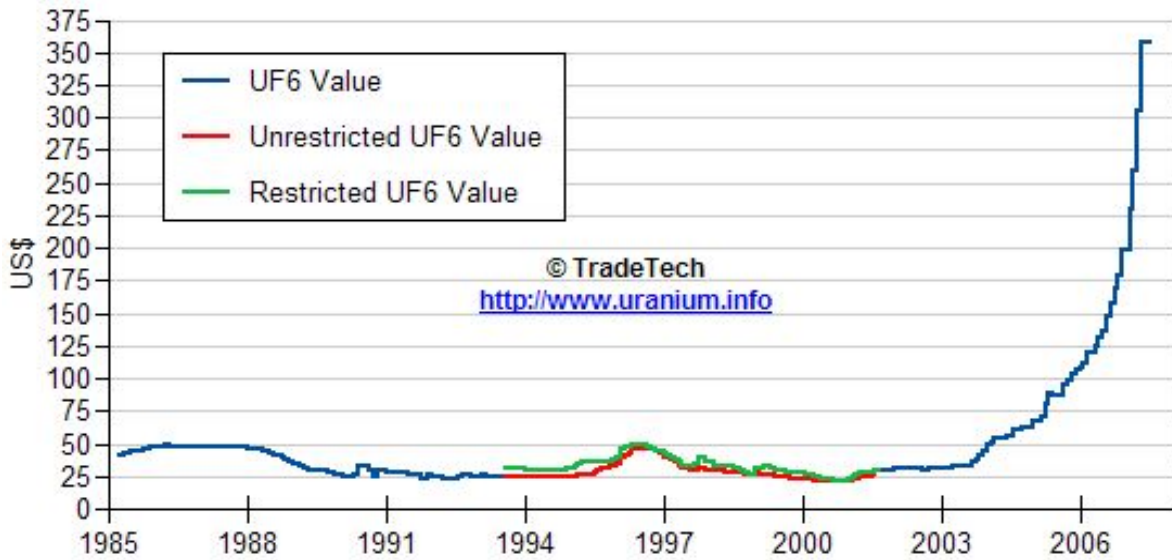
** Based on tonnage capability to produce raw steel for a sustained full order book.



Data reflect closings on weekends and holidays.

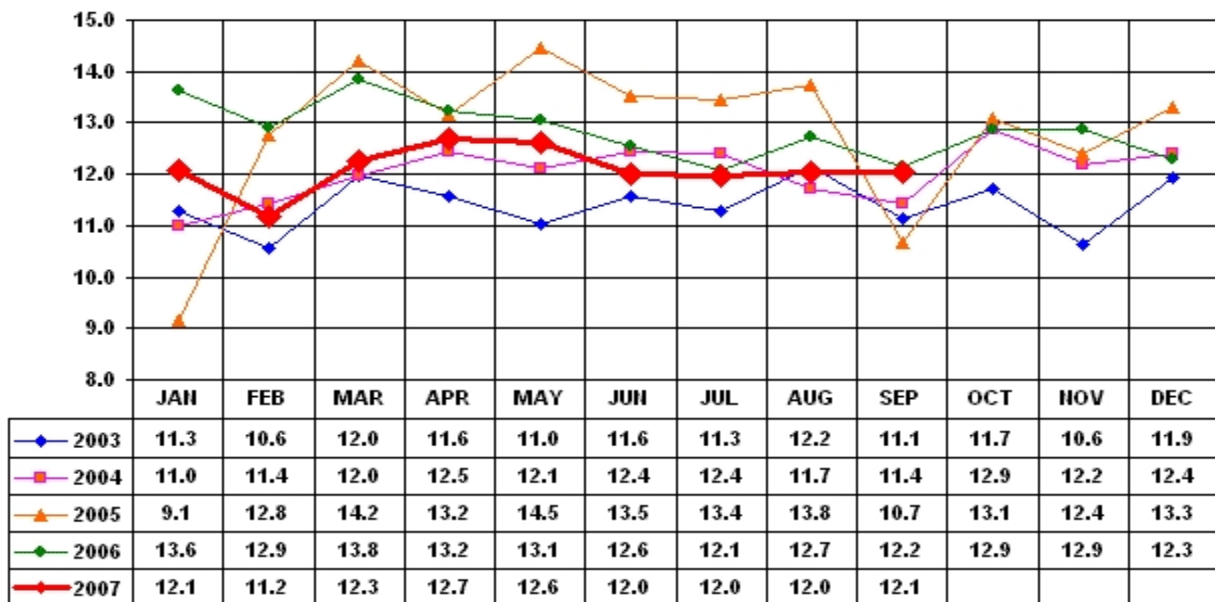
Source: Platts Metals Week

Trade Tech's Uranium (UF6) Monthly Spot Prices (US\$/kg as UF6)



Source: Trade Tech, Uranium Info Website – <http://www.uranium.info>

Coal and Coke Monthly Tonnage Indicator for Internal U.S. Waterways



Source: U.S. Army Corps of engineers, Waterborne Commerce Statistics Center