
National Mining Association

Weekly Statistical Summary

October 31, 2008 Edition
(Data for Week Ending October 25, 2008)

Prepared by
National Mining Association



Suite 500 East, 101 Constitution Avenue, NW
Washington, DC, 20001
Phone (202) 463-2600
Visit us at <http://www.nma.org>

NMA Weekly Statistical Summary

Vol. 46, No. 43
Dated 10/31/08

PRODUCTION, CONSUMPTION & TRADE						
	Week Ended			* Cumulative Jan 1 to		
	10/25/08	10/27/07	% Chng	10/25/08	10/25/07	% Chng
EIA Coal Production (000 Tons):						
Week Ended/Year to Date	23,308	22,030	5.8%	953,090	938,401	1.6%
52 Weeks Ended	1,155,895	1,145,785	0.9%			
* Due to leap year, 2008 cumulative reflects one extra day of tonnage.						
	September 08/07		% Chng	Jan - Sep 08/07		% Chng
Month Ended -- September	98,782	92,404	6.9%	870,264	857,763	1.5%
MONTH ENDED AND CUMULATIVE NUMBERS ARE PRELIMINARY AND SUBJECT TO CHANGE						
DOC Bituminous Coal Trade (000 Tons)						
	Aug 08/07		% Chng	Jan - Aug 08/07		% Chng
Exports:						
Metallurgical	2,881	3,237	-11.0%	27,489	21,125	30.1%
Steam	2,351	2,172	8.2%	22,690	15,697	44.5%
Imports:	3,144	3,716	-15.4%	22,335	24,280	-8.0%
	Week Ended			* Cumulative Jan 1 to		
	10/25/08	10/27/07	% Chng	10/25/08	10/27/07	% Chng
EEl Electric Output (Mil. Kwh)	72,073	73,267	-1.6%	3,386,391	3,420,721	-1.0%
AISI Raw Steel Output (000 Tons)	1,680	2,112	-20.5%	88,841	88,348	0.6%
EIA U.S. PETROLEUM DATA						
4-Week Averages						
000 Barrels per Day						
	Week Ending			Cumulative Daily Averages		
	10/24/08	10/24/07	% Chng	2008	2007	% Chng
PETROLEUM SUPPLY:						
Domestic Crude	4,575	5,015	-8.8	4,959	5,070	-2.2
Net Imports (Incl. SPR)	10,284	9,821	4.7	9,737	10,026	-2.9
SPR Stocks W/D or Added	92	-50	--	-18	-18	--
Other Stocks W/D or added	-622	159	--	-79	14	--
Natural Gas Liquids Prod.	2,286	2,443	-6.4	2,255	2,380	-5.3



NMA

THE AMERICAN RESOURCE National Mining Association Web Site: [http:// www.nma.org](http://www.nma.org)

EIA Estimated Weekly U.S. Coal Production Overview (Thousand Short Tons)

Coal-Producing Region and State	Week Ended			Year to Date			52 Weeks Ended		
	10/25/2008	10/18/2008	10/27/2007	10/25/2008	10/25/2007	Percent Change	10/25/2008	10/27/2007	Percent Change
Alabama	411	401	381	16,939	16,009	5.8	20,374	19,122	6.5
Alaska	27	27	29	1,152	1,071	7.6	1,399	1,341	4.3
Arizona	160	156	139	6,241	6,678	-6.5	7,518	8,100	-7.2
Arkansas	1	1	2	48	67	-27.6	64	73	-12.8
Colorado	709	692	689	29,572	29,938	-1.2	35,836	36,429	-1.6
Illinois	616	601	518	25,214	28,079	-10.2	29,875	33,889	-11.8
Indiana	743	725	655	29,104	28,897	0.7	35,066	35,144	-0.2
Kansas	6	6	8	248	348	-28.8	319	449	-29.1
Kentucky Total	2,280	2,225	2,187	98,420	95,284	3.3	118,198	115,349	2.5
Eastern	1,700	1,659	1,641	74,188	72,082	2.9	89,025	87,330	1.9
Western	579	565	547	24,232	23,202	4.4	29,173	28,019	4.1
Louisiana	95	92	77	3,200	2,308	38.6	3,998	3,096	29.1
Maryland	58	56	49	1,930	1,888	2.2	2,333	2,361	-1.2
Mississippi	60	0	63	2,560	3,016	-15.1	3,073	3,664	-16.1
Missouri	6	6	5	185	193	-3.9	228	246	-7.5
Montana	911	889	923	35,039	34,672	1.1	43,507	42,312	2.8
New Mexico	630	615	485	20,646	20,004	3.2	24,990	24,761	0.9
North Dakota	604	589	576	23,671	24,274	-2.5	28,889	29,822	-3.1
Ohio	495	483	453	20,432	18,332	11.5	24,575	22,252	10.4
Oklahoma	36	35	31	1,251	1,367	-8.5	1,526	1,678	-9.1
Pennsylvania Total	1,266	1,236	1,217	54,171	53,934	0.4	65,171	65,222	-0.1
Anthracite	22	21	32	1,192	1,275	-6.5	1,479	1,543	-4.1
Bituminous	1,245	1,215	1,185	52,979	52,659	0.6	63,692	63,680	*
Tennessee	54	52	53	2,072	2,167	-4.4	2,549	2,629	-3.0
Texas	773	754	845	31,261	34,076	-8.3	38,899	42,061	-7.5
Utah	479	468	514	19,706	19,596	0.6	24,306	24,367	-0.3
Virginia	533	520	419	19,979	21,671	-7.8	23,677	26,619	-11.1
Washington	--	--	--	--	--	--	0	205	-100.0
West Virginia Total	3,208	3,131	2,863	132,084	126,895	4.1	158,082	152,527	3.6
Northern	834	814	755	34,276	35,232	-2.7	41,099	42,047	-2.3
Southern	2,375	2,317	2,108	97,809	91,663	6.7	116,983	110,480	5.9
Wyoming	9,150	9,005	8,848	377,964	367,639	2.8	461,443	452,064	2.1
Appalachian Total	7,724	7,538	7,076	321,796	312,978	2.8	385,787	378,063	2.0
Interior Total	2,914	2,785	2,750	117,304	121,552	-3.5	142,221	148,320	-4.1
Western Total	12,670	12,440	12,204	513,991	503,871	2.0	627,887	619,402	1.4
East of Miss. River	9,721	9,429	8,859	402,906	396,172	1.7	482,974	478,779	0.9
West of Miss. River	13,586	13,334	13,171	550,184	542,229	1.5	672,920	667,005	0.9
Bituminous and Lignite	23,286	22,742	21,998	951,898	937,126	1.6	1,154,416	1,144,242	0.9
Anthracite	22	21	32	1,192	1,275	-6.5	1,479	1,543	-4.1
U.S. Total	23,308	22,763	22,030	953,090	938,401	1.6	1,155,895	1,145,785	0.9
Railroad Cars Loaded	156,712	152,546	147,161	6,336,844	6,116,769	3.6	7,624,107	7,396,880	3.1

Source: Energy Information Administration



Volume 76 No. 43

OUTPUT FOR WEEK ENDED - Oct 25, 2008

Oct 29, 2008

The net available amount of electric energy distributed by the Total Electric Utility Industry+ for the week ended Saturday, Oct 25, 2008 was 72,073 gigawatthours (GWh), according to the Edison Electric Institute. This is equivalent to 183 on the weekly electric output index.

WEEKLY ELECTRIC OUTPUT BY GEOGRAPHIC DIVISION
(48 CONTIGUOUS STATES)

	Week Ended October 25		52 Weeks Ended October 25	
	GWh Output	% Increase Over Corresponding Week of 2007	GWh Output	% Increase Over Corresponding Period of 2007
New England	2,337	-1.4	131,647	-1.4
Mid-Atlantic	7,864	-0.7	451,605	-0.8
Central Industrial	12,474	-0.4	708,468	-1.5
West Central	6,050	-1.2	345,503	-1.6
Southeast	19,762	-6.5	1,090,754	-1.1
South Central	9,673	0.5	603,089	0.9
Rocky Mountain	5,256	4.1	276,982	1.1
Pacific Northwest	3,095	3.0	167,821	6.3
Pacific Southwest	5,562	0.9	290,414	-1.0
Total United States	72,073	-1.6	4,066,283	-0.5

WEEKLY ELECTRIC OUTPUT IN PREVIOUS WEEKS--GWh

Week Ended	2008	Week Ended	2007	% Inc. (08/07)	52 Weeks Ended	2008	% Inc. (08/07)
Oct 04	74,224	Oct 06	78,867	-5.9	Oct 04	4,073,604	0.0
Oct 11	72,660	Oct 13	77,585	-6.3	Oct 11	4,068,680	-0.3
Oct 18	72,773	Oct 20	73,975	-1.6	Oct 18	4,067,478	-0.4
Oct 25	72,073	Oct 27	73,267	-1.6	Oct 25	4,066,283	-0.5
Oct 25	3,386,391	Oct 27	3,420,721	-1.0	YEAR TO DATE, FIRST 43 WEEKS		

WEEKLY ELECTRIC OUTPUT INDEX--TOTAL U.S.*
SEASONALLY ADJUSTED 1982 = 100

Week Ended	2008	Week Ended	2007	Week Ended	2006
Oct 04	181	Oct 06	187	Oct 07	179
Oct 11	181	Oct 13	192	Oct 14	172
Oct 18	184	Oct 20	186	Oct 21	178
Oct 25	183	Oct 27	185	Oct 28	180

* Excludes Alaska and Hawaii.

+ Includes investor-owned companies, cooperatives and government-owned utilities.

Copyright © 2008 Edison Electric Institute. All rights reserved.

WEEKLY ELECTRIC OUTPUT BY GEOGRAPHIC DIVISION (48 CONTIGUOUS STATES)

	Week Ended			NMA CUMULATIVE JANUARY WEEK ONE TO			52 Weeks Ended		
	25-Oct 2008 GWh Output	27-Oct 2007 GWh Output	% Increase Over Corresponding Week of 2007	25-Oct 2008 GWh Output	27-Oct 2007 GWh Output	% Increase Over Corresponding Week of 2007	25-Oct 2008 GWh Output	27-Oct 2007 GWh Output	% Increase Over Corresponding Week of 2007
New England	2,337	2,369	-1.4%	108,615	111,414	-2.5%	131,647	133,579	-1.4%
Mid-Atlantic	7,864	7,923	-0.7%	374,777	381,837	-1.8%	451,605	455,338	-0.8%
Central Industrial	12,474	12,524	-0.4%	586,312	599,981	-2.3%	708,468	719,342	-1.5%
West Central	6,050	6,121	-1.2%	286,994	293,705	-2.3%	345,503	350,944	-1.6%
Southeast	19,762	21,142	-6.5%	909,088	924,994	-1.7%	1,090,754	1,103,159	-1.1%
South Central	9,673	9,621	0.5%	511,071	506,118	1.0%	603,089	597,758	0.9%
Rocky Mountain	5,256	5,050	4.1%	228,293	228,741	-0.2%	276,982	274,093	1.1%
Pacific Northwest	3,095	3,005	3.0%	136,380	127,638	6.8%	167,821	157,903	6.3%
Pacific Southwest	5,562	5,512	0.9%	244,864	246,292	-0.6%	290,414	293,404	-1.0%
Total United States *	<u>72,073</u>	<u>73,267</u>	-1.6%	<u>3,386,394</u>	<u>3,420,720</u>	-1.0%	4,066,283	4,085,520	-0.5%

Notes: EEI output data are an estimate of electricity load made available for distribution derived as weekly net generation + purchases from non-utilities + net imports - exports - sales for resale. It is not meant to be a measure of electricity generation for the U.S. EEI survey data represent the majority of national distribution (large utilities, large government power projects, some independent and large municipal power projects). The remaining segment of the industry (smaller producers) is estimated. Non-utility generation is captured via direct sales to utilities.

* Excludes Alaska and Hawaii

** Less than one-tenth of one percent

SOURCE: Edison Electric Institute (EEI), *Weekly Electric Output Report*.

AMERICAN IRON AND STEEL INSTITUTE
 1140 Connecticut Avenue, Suite 705
 Washington, D.C. 20036

October 27, 2008

ESTIMATED WEEKLY RAW STEEL* PRODUCTION

Period	Thousand Net Tons	Percent Change from Previous Period	Percent Capability Utilization**	Production by District		
				Week Ending Oct. 25	Week Ending Oct. 18	
Week Ending				North East Coast	132	152
October 25, 2008	1,680	-3.7	70.4	Pgh/Youngstown	170	170
October 25, 2007	2,112	-20.5	88.5	Lake Erie	71	93
October 18, 2008	1,744	-6.7	73.1	Detroit	73	73
				Indiana/Chicago	377	428
				Midwest	231	213
				Southern	555	540
				Western	71	75
				Total	1,680	1,744
Year-to-Date+						
October 25, 2008	88,841	0.6	87.2			
October 25, 2007	88,348	-	86.4			

*Raw steel production tonnage included in this report is estimated based on a sampling of steel producers. Therefore, this report should be used primarily to assess production trends. The AISI production report "AIS 7," produced monthly and available by subscription, provides a more accurate summary of steel production based on data supplied by companies representing approximately 75% of U.S. production capacity.

+ Includes revisions for previous months

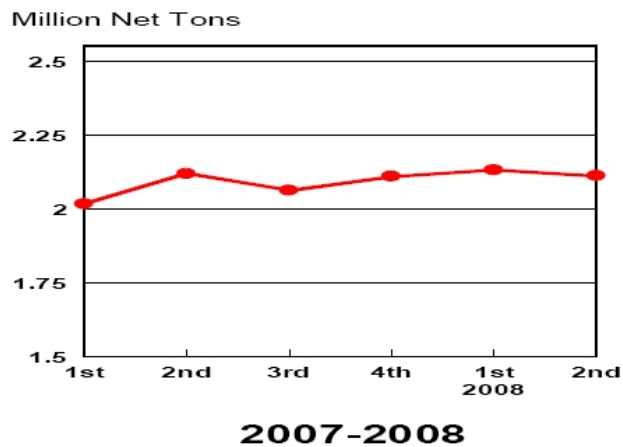
NOTE: Capability for the Third Quarter 2008 is approximately 31.4 million net tons vs 30.1 million net tons for the same period last year, and 31.0 million tons for the second quarter of 2008.

Capability -	2004 approx.	2.2 million tons/week
	2005	2.3
	2006	2.4
	2007	2.4
	2008	2.4

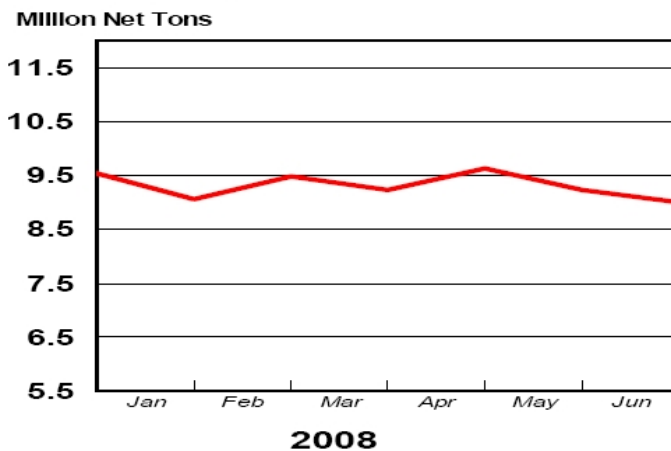
*Steel in the first solid state after melting suitable for further processing or sale, including ingots, steel for castings and strand or pressure cast blooms, slabs, or other product forms.

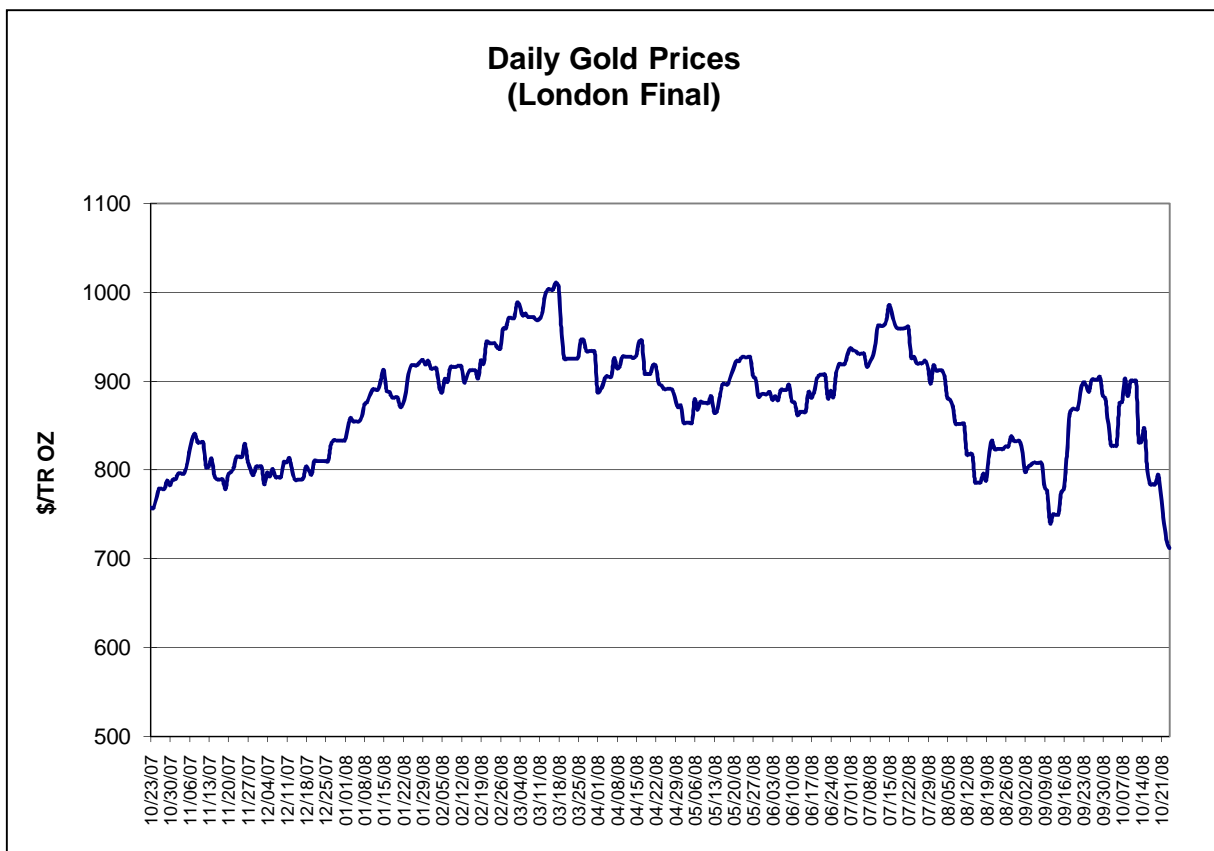
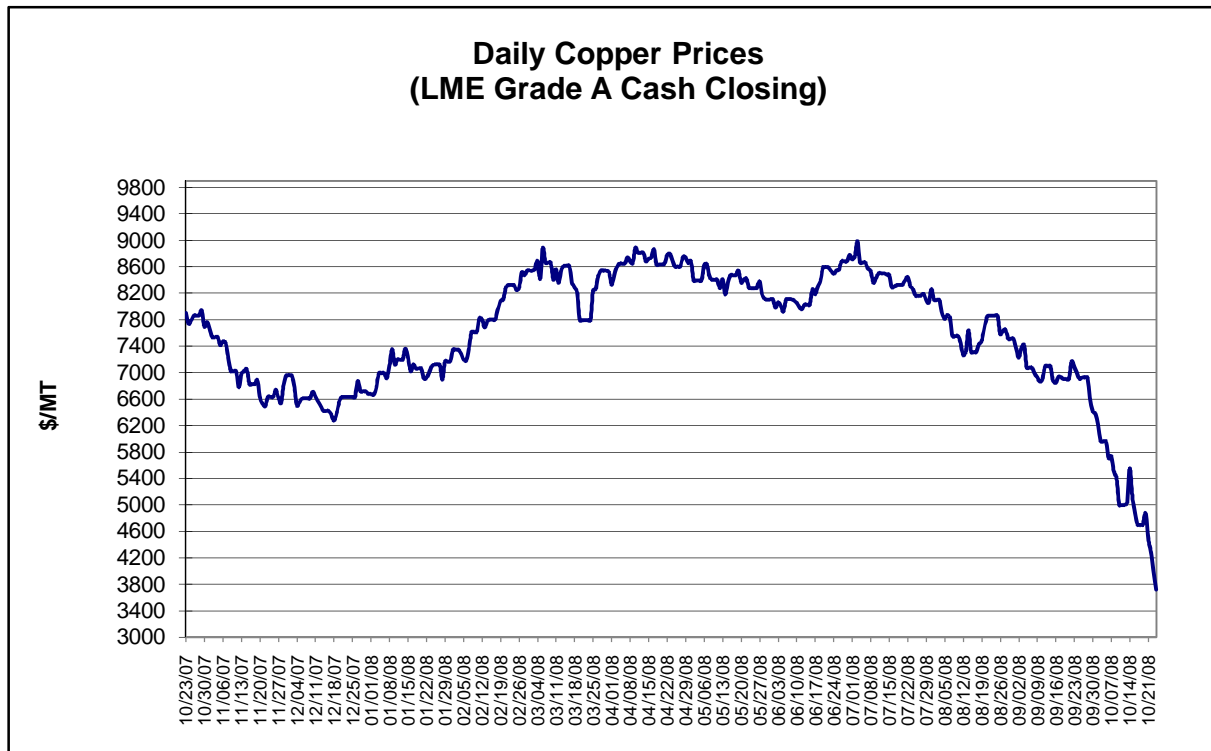
** Based on tonnage capability to produce raw steel for a sustained full order book.

Average Weekly Raw Steel Production



Monthly Raw Steel Production

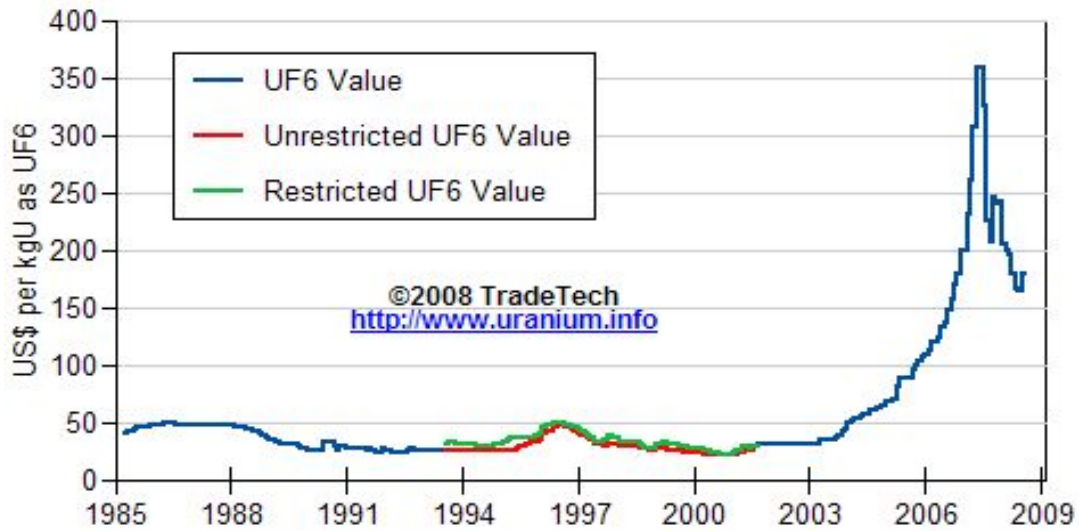




Data reflect closings on weekends and holidays.

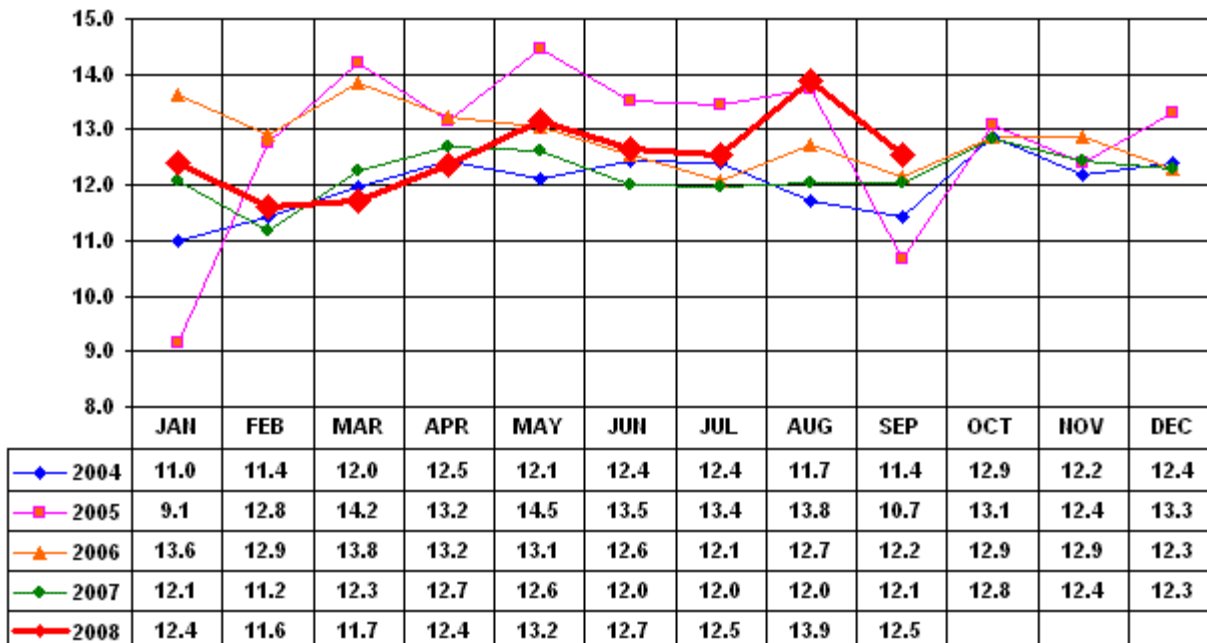
Source: Platts Metals Week

Trade Tech's Uranium (UF6) Monthly Spot Prices (US\$/kg as UF6)



Source: Trade Tech, Uranium Info Website – <http://www.uranium.info>

Coal and Coke Monthly Tonnage Indicator for Internal U.S. Waterways

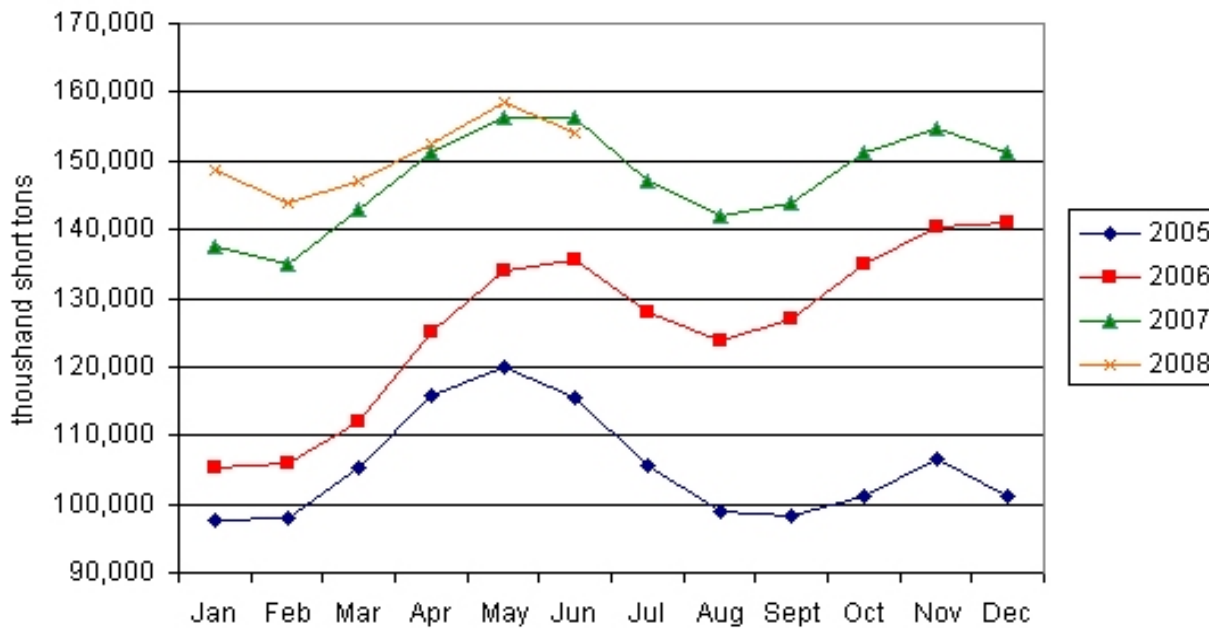


Source: U.S. Army Corps of Engineers, Waterborne Commerce Statistics Center

Average Weekly Coal Commodity Spot Prices (Dollars per Short Ton)					
Week Ended	Central Appalachia 12,500 Btu, 1.2 SO2	Northern Appalachia 13,000 Btu, <3.0 SO2	Illinois Basin 11,800 Btu, 5.0 SO2	Powder River Basin 8,800 Btu, 0.8 SO2	Uinta Basin 11,700 Btu, 0.8 SO2
12-Sep-08	\$140.00	\$140.00	\$83.00	\$11.00	\$61.00
19-Sep-08	\$140.00	\$150.00	\$84.00	\$11.25	\$61.00
26-Sep-08	\$135.00	\$150.00	\$84.00	\$11.25	\$61.00
03-Oct-08	\$133.00	\$143.00	\$84.00	\$14.50	\$61.00
10-Oct-08	\$133.00	\$138.00	\$84.00	\$14.50	\$61.00
17-Oct-08	\$133.00	\$138.00	\$84.00	\$14.50	\$61.00
24-Oct-08	\$119.25	\$123.00	\$84.00	\$14.50	\$61.00

Source: Energy Information Administration (from Platts *Coal Outlook*, "Weekly Price Survey")

EIA Electric Power Sector Coal Stocks



Source: Energy Information Administration

USGS Production of Selected Mineral Commodities	2008 Year to Date - 2nd Quarter	2007 Year to Date - 2nd Quarter	Percent Change
Aluminum, secondary (000 Mt.)	445.0	477.0	-7%
Cement (Mil. Mt.)	41.1	43.7	-6%
Gypsum (Mil. Mt.)	9.4	10.9	-14%
Iron Ore (Mil. Mt.)	26.8	25.1	7%
Phosphate rock (Mil. Mt.)	15.3	14.7	4%
Sand & gravel, construction (Mil. Mt.)	477.0	533.0	-11%
Soda ash (Mil. Mt.)	5.6	5.5	2%
Stone, crushed (Mil. Mt.)	664.0	730.0	-9%
Zinc (000 Mt.)	420.0	365.0	15%

Source: U.S. Geological Survey, Mineral Industry Surveys, *U.S. Production of Selected Mineral Commodities in the Second Quarter 2008*, August 2008