

---

National Mining Association

# Weekly Statistical Summary

October 5, 2007 Edition  
(Data for Week Ending September 29, 2007)

Prepared by  
National Mining Association



Suite 500 East, 101 Constitution Avenue, NW  
Washington, DC, 20001  
Phone (202) 463-2600  
Visit us at <http://www.nma.org>

# NMA Weekly Statistical Summary

Vol. 45, No. 39  
Dated 10/05/07

PRODUCTION, CONSUMPTION & TRADE						
	Week Ended			Cumulative Jan 1 to		
	09/29/07	09/30/06	% Chng	09/29/07	09/30/06	% Chng
<b>EIA Coal Production (000 Tons):</b>						
Week Ended/Year to Date	22,791	22,289	2.3%	856,182	869,642	-1.5%
52 Weeks Ended	1,147,579	1,151,337	-0.3%			
<b>Month Ended -- August</b>						
	August 07/06		% Chng	Jan - August 07/06		% Chng
	101,462	100,644	0.8%	763,335	777,128	-1.8%
MONTH ENDED AND CUMULATIVE NUMBERS ARE PRELIMINARY AND SUBJECT TO CHANGE						
<b>DOC Bituminous Coal Trade (000 Tons)</b>						
<b>Exports:</b>	July 07/06			Jan - July 07/06		
			% Chng			% Chng
Metallurgical	3,247	1,483	118.9%	17,889	15,204	17.7%
Steam	2,532	1,847	37.1%	13,525	11,182	21.0%
<b>Imports:</b>	3,373	3,181	6.0%	20,564	20,095	2.3%
<b>EEI Electric Output (Mil. Kwh)</b>						
	Week Ended			Cumulative Jan 1 to		
	09/29/07	09/30/06	% Chng	09/29/07	09/30/06	% Chng
EEI Electric Output (Mil. Kwh)	81,021	72,866	11.2%	3,117,028	3,034,987	2.7%
<b>AISI Raw Steel Output (000 Tons)</b>	2,125	2,147	-1.0%	79,394	83,485	-4.9%
<b>EIA U.S. PETROLEUM DATA</b>						
4-Week Averages 000 Barrels per Day						
<b>PETROLEUM SUPPLY:</b>						
	Week Ending			Cumulative Daily Averages		
	09/28/07	09/28/06	% Chng	2007	2006	% Chng
Domestic Crude	5,065	5,149	-1.6	5,168	5,095	1.4
Net Imports (Incl. SPR)	9,991	10,678	-6.4	10,031	10,169	-1.4
SPR Stocks W/D or Added	-91	0	--	-16	-12	--
Other Stocks W/D or added	282	-32	--	-39	-33	--
Natural Gas Liquids Prod.	2,321	2,461	-5.7	2,362	2,180	8.3



**NMA**  
THE AMERICAN RESOURCE

National Mining Association Web Site: [http:// www.nma.org](http://www.nma.org)

## EIA Estimated Weekly U.S. Coal Production Overview (Thousand Short Tons)

Coal-Producing Region and State	Week Ended			Year To Date			52 Weeks Ended		
	9/29/2007	9/22/2007	9/30/2006	9/29/2007	9/29/2006	Percent Change	9/29/2007	9/30/2006	Percent Change
Alabama	397	397	350	14,717	14,524	1.3	19,213	19,357	-0.7
Alaska	27	27	24	1,140	1,035	10.2	1,530	1,352	13.2
Arizona	153	153	167	6,003	6,154	-2.5	8,065	8,937	-9.8
Arkansas	1	1	s	45	14	225.5	54	15	268.5
Colorado	759	758	1,076	27,713	26,925	2.9	36,996	35,828	3.3
Illinois	641	639	645	26,457	24,315	8.8	34,845	31,720	9.9
Indiana	706	705	671	26,724	26,098	2.4	35,723	34,826	2.6
Kansas	9	9	11	335	282	19.1	480	319	50.5
<b>Kentucky Total</b>	<b>2,299</b>	<b>2,295</b>	<b>2,160</b>	<b>87,453</b>	<b>92,181</b>	<b>-5.1</b>	<b>116,351</b>	<b>121,891</b>	<b>-4.5</b>
Eastern	1,725	1,722	1,681	65,958	71,849	-8.2	87,939	94,827	-7.3
Western	574	573	480	21,495	20,332	5.7	28,412	27,063	5.0
Louisiana	19	47	87	2,122	2,996	-29.2	3,231	4,052	-20.3
Maryland	103	103	115	2,448	4,370	-44.0	3,131	5,610	-44.2
Mississippi	86	87	81	2,754	2,900	-5.0	3,643	3,794	-4.0
Missouri	6	6	3	193	317	-39.1	270	483	-44.1
Montana	800	799	889	30,158	30,854	-2.3	41,020	40,820	0.5
New Mexico	500	499	547	19,297	19,034	1.4	26,164	26,236	-0.3
North Dakota	522	521	590	21,160	22,395	-5.5	29,177	30,179	-3.3
Ohio	475	474	411	16,642	17,069	-2.5	22,281	23,263	-4.2
Oklahoma	40	40	39	1,347	1,547	-12.9	1,798	2,028	-11.3
<b>Pennsylvania Total</b>	<b>1,217</b>	<b>1,214</b>	<b>1,154</b>	<b>49,545</b>	<b>49,890</b>	<b>-0.7</b>	<b>65,814</b>	<b>67,255</b>	<b>-2.1</b>
Anthracite	27	27	18	1,140	1,155	-1.3	1,523	1,617	-5.8
Bituminous	1,189	1,187	1,136	48,406	48,736	-0.7	64,292	65,638	-2.1
Tennessee	56	56	49	2,046	2,137	-4.3	2,713	2,903	-6.5
Texas	912	911	957	31,673	34,222	-7.5	42,874	46,565	-7.9
Utah	462	461	391	18,318	19,135	-4.3	25,191	25,249	-0.2
Virginia	571	570	605	21,577	22,680	-4.9	28,747	29,241	-1.7
Washington	0	0	51	0	2,157	-100.0	422	3,257	-87.0
<b>West Virginia Total</b>	<b>2,937</b>	<b>2,932</b>	<b>2,779</b>	<b>116,023</b>	<b>115,415</b>	<b>0.5</b>	<b>152,891</b>	<b>152,921</b>	<b>*</b>
Northern	909	908	776	34,342	32,566	5.5	44,153	43,341	1.9
Southern	2,028	2,024	2,004	81,681	82,849	-1.4	108,738	109,580	-0.8
Wyoming	9,094	8,667	8,437	330,292	330,996	-0.2	444,956	433,237	2.7
<b>Appalachian Total</b>	<b>7,481</b>	<b>7,468</b>	<b>7,142</b>	<b>288,957</b>	<b>297,934</b>	<b>-3.0</b>	<b>382,728</b>	<b>395,377</b>	<b>-3.2</b>
<b>Interior Total</b>	<b>2,993</b>	<b>3,018</b>	<b>2,975</b>	<b>113,145</b>	<b>113,023</b>	<b>0.1</b>	<b>151,330</b>	<b>150,865</b>	<b>0.3</b>
<b>Western Total</b>	<b>12,317</b>	<b>11,885</b>	<b>12,172</b>	<b>454,081</b>	<b>458,685</b>	<b>-1.0</b>	<b>613,522</b>	<b>605,095</b>	<b>1.4</b>
<b>East of Miss. River</b>	<b>9,487</b>	<b>9,472</b>	<b>9,019</b>	<b>366,388</b>	<b>371,579</b>	<b>-1.4</b>	<b>485,351</b>	<b>492,781</b>	<b>-1.5</b>
<b>West of Miss. River</b>	<b>13,304</b>	<b>12,899</b>	<b>13,270</b>	<b>489,795</b>	<b>498,063</b>	<b>-1.7</b>	<b>662,229</b>	<b>658,556</b>	<b>0.6</b>
Bituminous and Lignite	22,764	22,343	22,271	855,043	868,487	-1.5	1,146,057	1,149,720	-0.3
Anthracite	27	27	18	1,140	1,155	-1.3	1,523	1,617	-5.8
<b>U.S. Total</b>	<b>22,791</b>	<b>22,370</b>	<b>22,289</b>	<b>856,182</b>	<b>869,642</b>	<b>-1.5</b>	<b>1,147,579</b>	<b>1,151,337</b>	<b>-0.3</b>
Railroad Cars Loaded	151,026	147,434	144,708	5,531,751	5,589,598	-1.0	7,397,510	7,355,701	0.6

Source: Energy Information Administration



Volume 75 No. 39

**OUTPUT FOR WEEK ENDED - Sep 29, 2007**

Oct 03, 2007

The net available amount of electric energy distributed by the Total Electric Utility Industry+ for the week ended Saturday, **Sep 29, 2007** was **81,021** gigawatthours (GWh), according to the Edison Electric Institute. This is equivalent to **189** on the weekly electric output index.

**WEEKLY ELECTRIC OUTPUT BY GEOGRAPHIC DIVISION**  
(48 CONTIGUOUS STATES)

	Week Ended September 29		52 Weeks Ended September 29	
	GWh Output	% Increase Over Corresponding Week of 2006	GWh Output	% Increase Over Corresponding Period of 2006
New England	2,646	12.8	133,335	0.3
Mid-Atlantic	9,077	13.5	453,481	1.5
Central Industrial	14,074	17.4	717,490	2.7
West Central	6,831	11.0	350,169	1.5
Southeast	22,122	11.5	1,097,763	2.2
South Central	12,638	14.3	595,072	-0.4
Rocky Mountain	4,889	1.9	272,578	5.5
Pacific Northwest	2,793	7.1	157,318	4.0
Pacific Southwest	5,951	-2.1	293,702	0.6
Total United States	81,021	11.2	4,070,908	1.9

**WEEKLY ELECTRIC OUTPUT IN PREVIOUS WEEKS--GWh**

Week Ended	2007	Week Ended	2006	% Inc. (07/06)	52 Weeks Ended	2007	% Inc. (07/06)
Sep 08	88,495	Sep 09	78,027	13.4	Sep 08	4,055,947	1.1
Sep 15	81,556	Sep 16	77,357	5.4	Sep 15	4,060,145	1.4
Sep 22	79,130	Sep 23	76,523	3.4	Sep 22	4,062,753	1.6
Sep 29	81,021	Sep 30	72,866	11.2	Sep 29	4,070,908	1.9
Sep 29	3,117,028	Sep 30	3,034,987	2.7	YEAR TO DATE, FIRST 39 WEEKS		

**WEEKLY ELECTRIC OUTPUT INDEX--TOTAL U.S.\***  
**SEASONALLY ADJUSTED 1982 = 100**

Week Ended	2007	Week Ended	2006	Week Ended	2005
Sep 08	188	Sep 09	167	Sep 10	160
Sep 15	175	Sep 16	168	Sep 17	189
Sep 22	175	Sep 23	172	Sep 24	196
Sep 29	189	Sep 30	172	Oct 01	183

\* Excludes Alaska and Hawaii

+ Includes investor-owned companies, cooperatives and government-owned utilities.

Copyright © 2007 Edison Electric Institute. All rights reserved.

## WEEKLY ELECTRIC OUTPUT BY GEOGRAPHIC DIVISION (48 CONTIGUOUS STATES)

	Week Ended			NMA CUMULATIVE JANUARY 1 to			52 Weeks Ended		
	29-Sep	30-Sep	% Increase Over Corresponding Week of 2006	29-Sep	30-Sep	% Increase Over Corresponding Week of 2006	29-Sep	30-Sep	% Increase Over Corresponding Week of 2006
	2007	2006		2007	2006		2007	2006	
	GWh Output	GWh Output		GWh Output	GWh Output		GWh Output	GWh Output	
<b>New England</b>	2,646	2,345	12.8%	<b>101,795</b>	<b>100,284</b>	<b>1.5%</b>	133,335	132,963	0.3%
<b>Mid-Atlantic</b>	9,077	7,995	13.5%	<b>348,687</b>	<b>338,956</b>	<b>2.9%</b>	453,481	446,678	1.5%
<b>Central Industrial</b>	14,074	11,989	17.4%	<b>547,658</b>	<b>525,055</b>	<b>4.3%</b>	717,490	698,467	2.7%
<b>West Central</b>	6,831	6,152	11.0%	<b>268,396</b>	<b>262,376</b>	<b>2.3%</b>	350,169	344,871	1.5%
<b>Southeast</b>	22,122	19,844	11.5%	<b>840,601</b>	<b>814,929</b>	<b>3.2%</b>	1,097,763	1,073,787	2.2%
<b>South Central</b>	12,638	11,058	14.3%	<b>461,156</b>	<b>464,454</b>	<b>-0.7%</b>	595,072	597,451	-0.4%
<b>Rocky Mountain</b>	4,889	4,799	1.9%	<b>207,906</b>	<b>195,950</b>	<b>6.1%</b>	272,578	258,410	5.5%
<b>Pacific Northwest</b>	2,793	2,608	7.1%	<b>115,998</b>	<b>110,056</b>	<b>5.4%</b>	157,318	151,237	4.0%
<b>Pacific Southwest</b>	<u>5,951</u>	<u>6,076</u>	-2.1%	<u><b>224,829</b></u>	<u><b>222,930</b></u>	<b>0.9%</b>	<u>293,702</u>	<u>291,869</u>	0.6%
<b>Total United States *</b>	81,021	72,866	11.2%	<b>3,117,026</b>	<b>3,034,990</b>	<b>2.7%</b>	4,070,908	3,995,733	1.9%

**Notes:** EEI output data are an estimate of electricity load made available for distribution derived as weekly net generation + purchases from non-utilities + net imports - exports - sales for resale. It is not meant to be a measure of electricity generation for the U.S. EEI survey data represent the majority of national distribution (large utilities, large government power projects, some independent and large municipal power projects). The remaining segment of the industry (smaller producers) is estimated. Non-utility generation is captured via direct sales to utilities.

\* Excludes Alaska and Hawaii

\*\* Less than one-tenth of one percent

SOURCE: Edison Electric Institute (EEI), *Weekly Electric Output Report*.

AMERICAN IRON AND STEEL INSTITUTE  
 1140 Connecticut Avenue, Suite 705  
 Washington, D.C. 20036

October 2, 2007

**ESTIMATED WEEKLY RAW STEEL\* PRODUCTION**

<u>Period</u>	<u>Thousand Net Tons</u>	<u>Percent Change from Previous Period</u>	<u>Percent Capability Utilization**</u>	<u>Production by District</u>		
				<u>Week Ending</u>		
				<u>Sep 29</u>	<u>Sep 22</u>	
<b><u>Week Ending</u></b>				North East Coast	138	149
				Pgh/Youngstown	205	196
				Lake Erie	106	112
				Detroit	128	120
				Indiana/Chicago	559	549
				Midwest	252	255
				Southern	642	634
				Western	<u>95</u>	<u>86</u>
				Total	2125	2101
<b><u>Year-to-Date+</u></b>						
Sept 29, 2007	2,125	1.1	89.8			
Sept 29, 2006	2,147	-1.0	91.2			
Sept 22, 2007	2,101	0.6	88.8			
Sept 29, 2007	79,394	-4.9	85.6			
Sept 29, 2006	83,485	-	90.1			

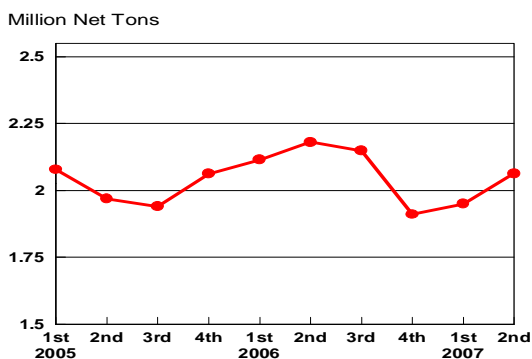
\*Raw steel production tonnage included in this report is estimated based on a sampling of steel producers. Therefore, this report should be used primarily to assess production trends. The AISI production report "AIS 7," produced monthly and available by subscription, provides a more accurate summary of steel production based on data supplied by companies representing approximately 75% of U.S. production capacity.

+Includes revisions for previous months

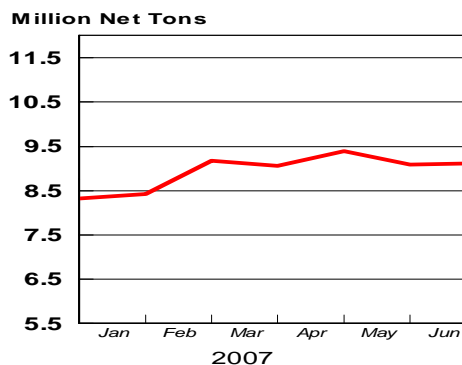
NOTE: Capability for the First Quarter 2007 is approximately 31.2 million net tons vs 30.5 million net tons for the same period last year, and 30.7 million tons for the fourth quarter of 2006.

Capability -	2003 approx.	2004	2005	2006	2007
	2.3 million tons/week	2.2	2.3	2.4	2.4

**Average Weekly Raw Steel Production**

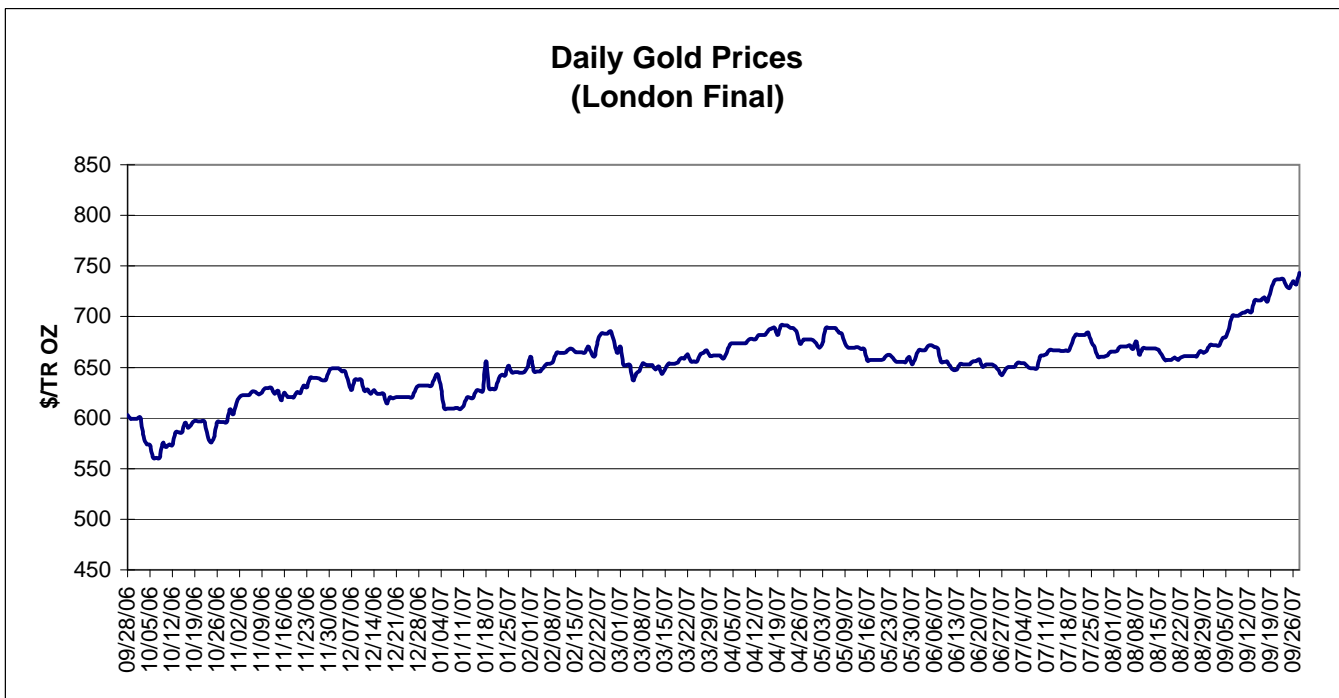
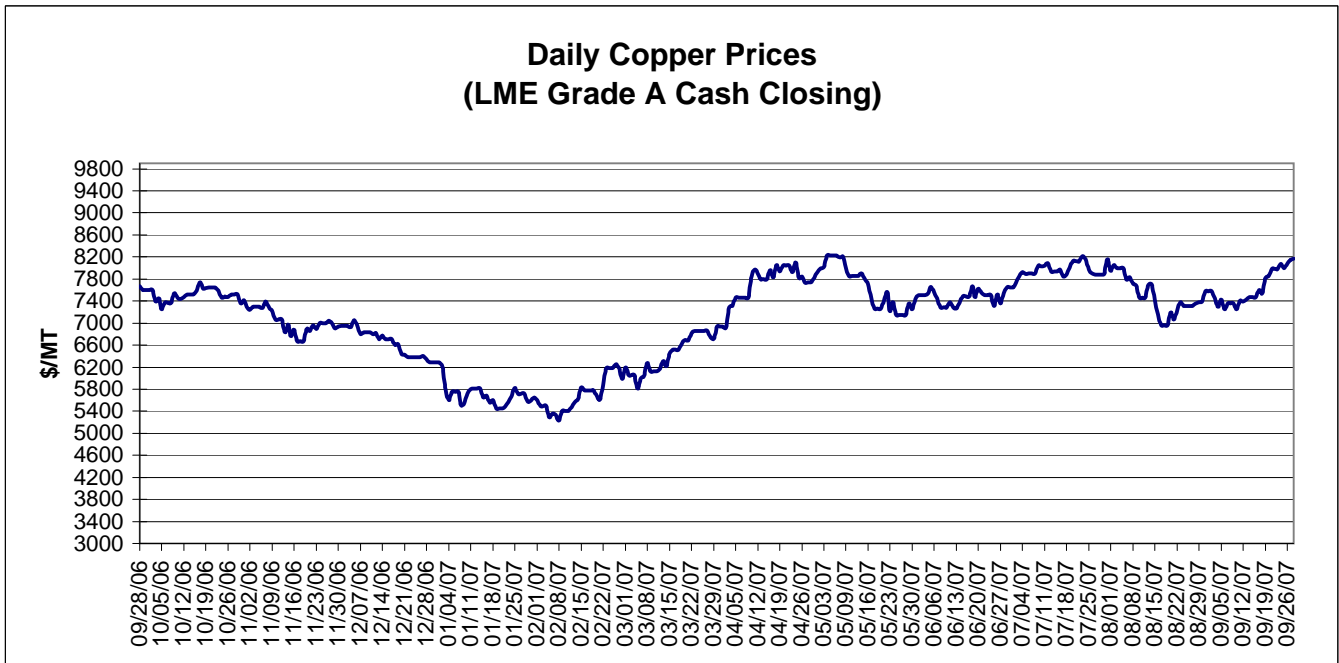


**MONTHLY RAW STEEL PRODUCTION**



\*Steel in the first solid state after melting suitable for further processing or sale, including ingots, steel for castings and strand or pressure cast blooms, slabs, or other product forms.

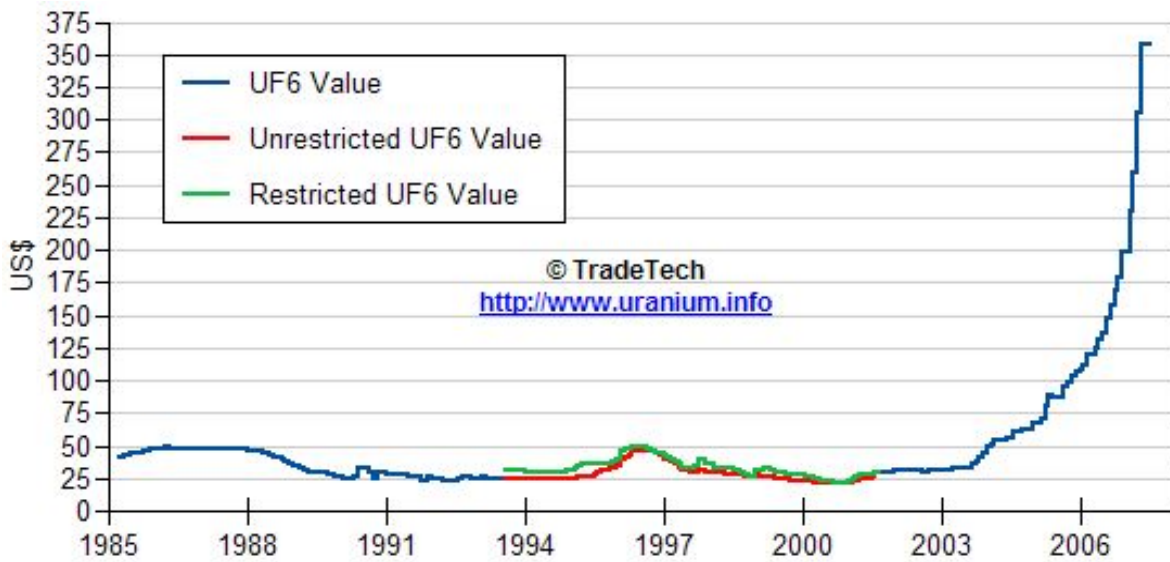
\*\* Based on tonnage capability to produce raw steel for a sustained full order book.



Data reflect closings on weekends and holidays.

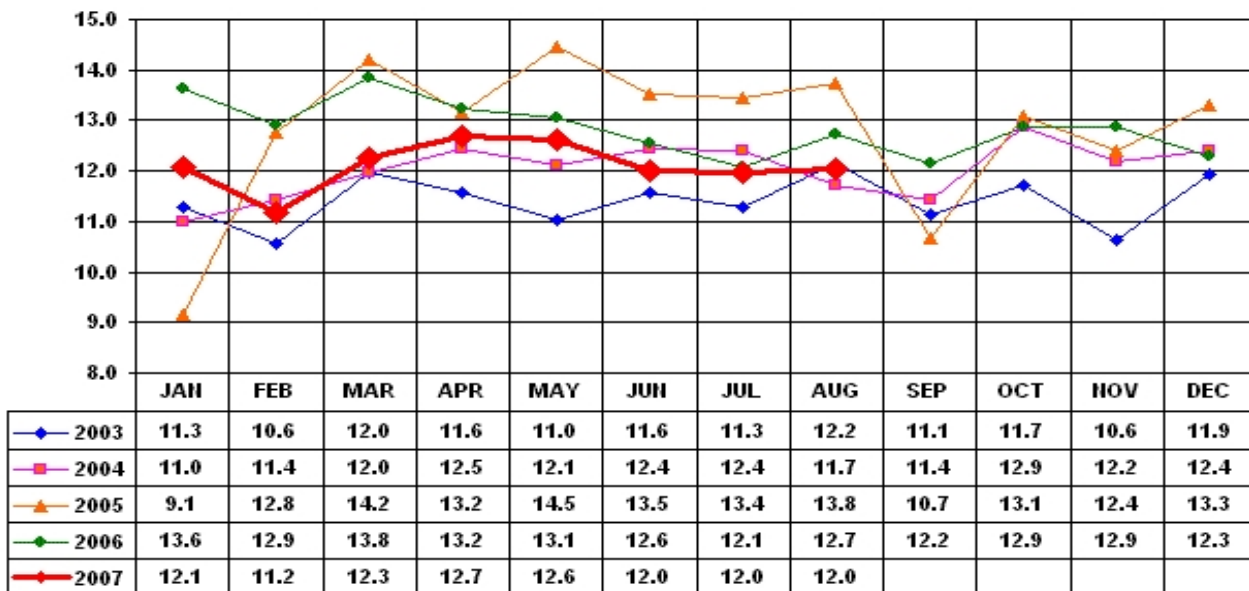
Source: Platts Metals Week

### Trade Tech's Uranium (UF6) Monthly Spot Prices (US\$/kg as UF6)



Source: Trade Tech, Uranium Info Website – <http://www.uranium.info>

### Coal and Coke Monthly Tonnage Indicator for Internal U.S. Waterways



Source: U.S. Army Corps of engineers, Waterborne Commerce Statistics Center