

---

National Mining Association

# Weekly Statistical Summary

January 11, 2008 Edition  
(Data for Week Ending January 5, 2008)

Prepared by  
National Mining Association



Suite 500 East, 101 Constitution Avenue, NW  
Washington, DC, 20001  
Phone (202) 463-2600  
Visit us at <http://www.nma.org>

# NMA Weekly Statistical Summary

Vol. 46, No. 01  
Dated 01/11/08

PRODUCTION, CONSUMPTION & TRADE						
	Week Ended			Cumulative Jan 1 to		
	01/05/08	01/06/07	% Chng	01/05/08	01/06/07	% Chng
<b>EIA Coal Production (000 Tons):</b>						
Week Ended/Year to Date	21,461	20,856	2.9%	15,844	16,635	-4.8%
52 Weeks Ended	1,144,883	1,160,489	-1.3%			
<b>Month Ended -- December</b>						
	<b>December 07/06</b>		<b>% Chng</b>	<b>Jan - Dec 07/06</b>		<b>% Chng</b>
	94,340	96,063	-1.8%	1,148,168	1,162,750	-1.3%
MONTH ENDED AND CUMULATIVE NUMBERS ARE PRELIMINARY AND SUBJECT TO CHANGE						
<b>DOC Bituminous Coal Trade (000 Tons)</b>						
<b>Exports:</b>						
	<b>October 07/06</b>		<b>% Chng</b>	<b>Jan - Oct 07/06</b>		<b>% Chng</b>
Metallurgical	2,575	2,297	12.1%	26,432	22,796	16.0%
Steam	2,319	1,548	49.8%	20,155	17,602	14.5%
<b>Imports:</b>						
	2,896	3,214	-9.9%	30,646	30,527	0.4%
<b>EI Electric Output (Mil. Kwh)</b>						
	<b>Week Ended</b>			<b>Cumulative Jan 1 to</b>		
	<b>01/05/08</b>	<b>01/06/07</b>	<b>% Chng</b>	<b>01/05/08</b>	<b>01/06/07</b>	<b>% Chng</b>
EI Electric Output (Mil. Kwh)	79,986	72,829	9.8%	79,986	72,829	9.8%
AISI Raw Steel Output (000 Tons)	2,027	1,877	8.0%	2,027	1,877	8.0%
<b>EIA U.S. PETROLEUM DATA</b>						
4-Week Averages 000 Barrels per Day						
<b>PETROLEUM SUPPLY:</b>						
	<b>Week Ending</b>			<b>Cumulative Daily Averages</b>		
	<b>01/04/08</b>	<b>01/04/07</b>	<b>% Chng</b>	<b>2008</b>	<b>2007</b>	<b>% Chng</b>
Domestic Crude	5,089	5,169	-1.5	--	--	--
Net Imports (Incl. SPR)	9,658	9,598	0.6	--	--	--
SPR Stocks W/D or Added	-38	0	--	--	--	--
Other Stocks W/D or added	774	601	--	--	--	--
Natural Gas Liquids Prod.	2,390	2,396	-0.3	--	--	--
Cumulative daily petroleum averages will be shown beginning with week ending April 4, 2008 data.						



**NMA**  
THE AMERICAN RESOURCE

National Mining Association Web Site: [http:// www.nma.org](http://www.nma.org)

## EIA Estimated Weekly U.S. Coal Production Overview (Thousand Short Tons)

Coal-Producing Region and State	Week Ended			Year to Date			52 Weeks Ended		
	1/5/2008	12/29/2007	1/6/2007	1/5/2008	1/5/2007	Percent Change	1/5/2008	1/6/2007	Percent Change
Alabama	319	311	352	251	292	-14.0	19,086	18,975	0.6
Alaska	19	18	31	14	31	-54.3	1,300	1,430	-9.1
Arizona	123	119	139	96	122	-21.7	7,822	8,199	-4.6
Arkansas	2	2	1	1	1	52.4	81	24	241.6
Colorado	618	603	557	447	424	5.4	36,525	36,292	0.6
Illinois	554	541	650	412	578	-28.7	33,941	32,771	3.6
Indiana	619	603	619	474	514	-7.8	35,739	35,072	1.9
Kansas	8	7	7	6	6	3.8	439	430	2.2
<b>Kentucky Total</b>	<b>1,979</b>	<b>1,930</b>	<b>2,018</b>	<b>1,500</b>	<b>1,794</b>	<b>-16.4</b>	<b>115,042</b>	<b>120,756</b>	<b>-4.7</b>
Eastern	1,458	1,422	1,504	1,110	1,355	-18.1	86,225	93,509	-7.8
Western	521	508	514	390	439	-11.0	28,817	27,247	5.8
Louisiana	110	76	62	80	48	67.3	3,165	4,085	-22.5
Maryland	35	35	41	27	39	-30.9	2,575	4,995	-48.4
Mississippi	73	72	53	54	38	39.8	3,639	3,766	-3.4
Missouri	4	4	4	3	3	-13.6	232	388	-40.3
Montana	757	739	698	545	520	4.7	42,107	41,686	1.0
New Mexico	405	395	378	313	317	-1.1	24,349	25,860	-5.8
North Dakota	507	495	529	400	446	-10.2	29,396	30,375	-3.2
Ohio	400	390	384	307	314	-2.0	22,133	22,653	-2.3
Oklahoma	32	31	28	25	25	-0.3	1,732	1,985	-12.8
<b>Pennsylvania Total</b>	<b>1,077</b>	<b>1,050</b>	<b>1,193</b>	<b>831</b>	<b>1,026</b>	<b>-19.0</b>	<b>64,918</b>	<b>66,115</b>	<b>-1.8</b>
Anthracite	27	27	28	21	25	-14.7	1,554	1,535	1.2
Bituminous	1,050	1,024	1,165	810	1,001	-19.1	63,365	64,580	-1.9
Tennessee	42	41	49	31	48	-34.1	2,580	2,797	-7.8
Texas	732	714	688	529	491	7.6	41,979	45,405	-7.5
Utah	381	372	419	286	383	-25.5	23,488	25,926	-9.4
Virginia	426	415	495	321	427	-24.7	26,724	29,760	-10.2
Washington	0	0	0	0	0	*	0	2,523	-100.0
<b>West Virginia Total</b>	<b>2,583</b>	<b>2,519</b>	<b>2,747</b>	<b>1,958</b>	<b>2,370</b>	<b>-17.4</b>	<b>153,621</b>	<b>152,156</b>	<b>1.0</b>
Northern	761	742	817	566	758	-25.3	44,220	42,367	4.4
Southern	1,822	1,777	1,930	1,391	1,612	-13.7	109,400	109,790	-0.4
Wyoming	9,656	8,460	8,712	6,932	6,377	8.7	452,270	446,065	1.4
<b>Appalachian Total</b>	<b>6,340</b>	<b>6,183</b>	<b>6,765</b>	<b>4,837</b>	<b>5,870</b>	<b>-17.6</b>	<b>377,862</b>	<b>390,961</b>	<b>-3.4</b>
<b>Interior Total</b>	<b>2,654</b>	<b>2,557</b>	<b>2,627</b>	<b>1,975</b>	<b>2,144</b>	<b>-7.9</b>	<b>149,764</b>	<b>151,172</b>	<b>-0.9</b>
<b>Western Total</b>	<b>12,466</b>	<b>11,201</b>	<b>11,463</b>	<b>9,032</b>	<b>8,621</b>	<b>4.8</b>	<b>617,257</b>	<b>618,357</b>	<b>-0.2</b>
<b>East of Miss. River</b>	<b>8,107</b>	<b>7,907</b>	<b>8,601</b>	<b>6,168</b>	<b>7,440</b>	<b>-17.1</b>	<b>479,997</b>	<b>489,817</b>	<b>-2.0</b>
<b>West of Miss. River</b>	<b>13,354</b>	<b>12,034</b>	<b>12,254</b>	<b>9,676</b>	<b>9,195</b>	<b>5.2</b>	<b>664,886</b>	<b>670,673</b>	<b>-0.9</b>
Bituminous and Lignite	21,433	19,915	20,828	15,823	16,611	-4.7	1,143,329	1,158,954	-1.3
Anthracite	27	27	28	21	25	-14.7	1,554	1,535	1.2
<b>U.S. Total</b>	<b>21,461</b>	<b>19,941</b>	<b>20,856</b>	<b>15,844</b>	<b>16,635</b>	<b>-4.8</b>	<b>1,144,883</b>	<b>1,160,489</b>	<b>-1.3</b>
Railroad Cars Loaded	134,311	122,168	131,411	134,311	131,411	2.2	7,406,932	7,448,631	-0.6

Source: Energy Information Administration

## EIA Estimated Weekly and Monthly U.S. Coal Production Overview (Thousand Short Tons)

Coal-Producing Region and State	Week Ended		Year to Date		Month Ended		January - December		Percent Change
	1/5/2008	1/6/2007	1/5/2008	1/5/2007	December 2007	December 2006	2007	2006	
Alabama	319	352	251	292	1,488	1,381	19,185	19,022	0.9
Alaska	19	31	14	31	102	122	1,317	1,425	-7.6
Arizona	123	139	96	122	552	635	7,865	8,216	-4.3
Arkansas	2	1	1	1	7	4	81	23	255.2
Colorado	618	557	447	424	2,988	2,979	36,566	36,322	0.7
Illinois	554	650	412	578	2,673	2,652	34,152	32,729	4.3
Indiana	619	619	474	514	2,878	2,831	35,862	35,119	2.1
Kansas	8	7	6	6	37	49	441	426	3.4
<b>Kentucky Total</b>	<b>1,979</b>	<b>2,018</b>	<b>1,500</b>	<b>1,794</b>	<b>9,338</b>	<b>9,072</b>	<b>115,509</b>	<b>121,127</b>	<b>-4.6</b>
Eastern	1,458	1,504	1,110	1,355	6,856	6,890	86,592	93,856	-7.7
Western	521	514	390	439	2,482	2,183	28,917	27,271	6.0
Louisiana	110	62	80	48	377	432	3,140	4,114	-23.7
Maryland	35	41	27	39	231	214	2,589	5,054	-48.8
Mississippi	73	53	54	38	289	310	3,632	3,797	-4.4
Missouri	4	4	3	3	18	23	233	394	-40.9
Montana	757	698	545	520	3,608	3,508	42,169	41,823	0.8
New Mexico	405	378	313	317	1,940	2,150	24,404	25,913	-5.8
North Dakota	507	529	400	446	2,341	2,502	29,525	30,411	-2.9
Ohio	400	384	307	314	1,840	1,764	22,195	22,722	-2.3
Oklahoma	32	28	25	25	151	140	1,735	1,998	-13.2
<b>Pennsylvania Total</b>	<b>1,077</b>	<b>1,193</b>	<b>831</b>	<b>1,026</b>	<b>5,049</b>	<b>5,105</b>	<b>65,260</b>	<b>66,178</b>	<b>-1.4</b>
Anthracite	27	28	21	25	132	123	1,560	1,538	1.4
Bituminous	1,050	1,165	810	1,001	4,917	4,981	63,700	64,640	-1.5
Tennessee	42	49	31	48	199	206	2,597	2,804	-7.4
Texas	732	688	529	491	3,603	3,709	42,043	45,548	-7.7
Utah	381	419	286	383	1,850	2,158	23,608	26,018	-9.3
Virginia	426	495	321	427	2,132	2,242	26,879	29,872	-10.0
Washington	0	s	0	0	0	s	0	2,580	-100.0
<b>West Virginia Total</b>	<b>2,583</b>	<b>2,747</b>	<b>1,958</b>	<b>2,370</b>	<b>12,117</b>	<b>11,595</b>	<b>154,318</b>	<b>152,374</b>	<b>1.3</b>
Northern	761	817	566	758	3,627	3,078	44,448	42,398	4.8
Southern	1,822	1,930	1,391	1,612	8,490	8,517	109,870	109,976	-0.1
Wyoming	9,656	8,712	6,932	6,377	38,533	40,282	452,864	446,742	1.4
<b>Appalachian Total</b>	<b>6,340</b>	<b>6,765</b>	<b>4,837</b>	<b>5,870</b>	<b>29,912</b>	<b>29,395</b>	<b>379,616</b>	<b>391,882</b>	<b>-3.1</b>
<b>Interior Total</b>	<b>2,654</b>	<b>2,627</b>	<b>1,975</b>	<b>2,144</b>	<b>12,514</b>	<b>12,332</b>	<b>150,234</b>	<b>151,419</b>	<b>-0.8</b>
<b>Western Total</b>	<b>12,466</b>	<b>11,463</b>	<b>9,032</b>	<b>8,621</b>	<b>51,914</b>	<b>54,336</b>	<b>618,318</b>	<b>619,449</b>	<b>-0.2</b>
<b>East of Miss. River</b>	<b>8,107</b>	<b>8,601</b>	<b>6,168</b>	<b>7,440</b>	<b>38,233</b>	<b>37,370</b>	<b>482,178</b>	<b>490,798</b>	<b>-1.8</b>
<b>West of Miss. River</b>	<b>13,354</b>	<b>12,254</b>	<b>9,676</b>	<b>9,195</b>	<b>56,107</b>	<b>58,692</b>	<b>665,990</b>	<b>671,952</b>	<b>-0.9</b>
Bituminous and Lignite	21,433	20,828	15,823	16,611	94,208	95,939	1,146,608	1,161,212	-1.3
Anthracite	27	28	21	25	132	123	1,560	1,538	1.4
<b>U.S. Total</b>	<b>21,461</b>	<b>20,856</b>	<b>15,844</b>	<b>16,635</b>	<b>94,340</b>	<b>96,063</b>	<b>1,148,168</b>	<b>1,162,750</b>	<b>-1.3</b>
Railroad Cars Loaded	134,311	131,411	134,311	131,411	--	--	--	--	--

Source: Energy Information Administration



## WEEKLY ELECTRIC OUTPUT

Essential Energy Information from EEI's Statistics Department

Volume 76 No. 1

### OUTPUT FOR WEEK ENDED - Jan 05, 2008

Jan 09, 2008

The net available amount of electric energy distributed by the Total Electric Utility Industry+ for the week ended Saturday, Jan 05, 2008 was **79,986** gigawatthours (GWh), according to the Edison Electric Institute. This is equivalent to **192** on the weekly electric output index.

### WEEKLY ELECTRIC OUTPUT BY GEOGRAPHIC DIVISION

(48 CONTIGUOUS STATES)

	Week Ended January 05		52 Weeks Ended January 05	
	GWh Output	% Increase Over Corresponding Week of 2007	GWh Output	% Increase Over Corresponding Period of 2007
New England	2,669	8.8	134,663	2.3
Mid-Atlantic	8,909	12.7	459,677	3.7
Central Industrial	14,001	8.2	723,201	4.2
West Central	6,580	7.5	352,676	2.5
Southeast	22,133	17.5	1,109,948	3.6
South Central	11,588	8.9	599,081	-0.1
Rocky Mountain	5,331	9.5	277,894	6.4
Pacific Northwest	4,056	10.5	159,462	5.1
Pacific Southwest	4,719	-12.4	291,169	-0.3
Total United States	79,986	9.8	4,107,770	3.0

### WEEKLY ELECTRIC OUTPUT IN PREVIOUS WEEKS--GWh

Week Ended	2008	Week Ended	2007	% Inc. (08/07)	52 Weeks Ended	2008	% Inc. (08/07)
Dec 15	79,780	Dec 16	75,777	5.3	Dec 15	4,092,013	2.5
Dec 22	80,631	Dec 23	74,830	7.8	Dec 22	4,097,814	2.8
Dec 29	74,832	Dec 30	72,033	3.9	Dec 29	4,100,612	2.8
Jan 05	79,986	Jan 06	72,829	9.8	Jan 05	4,107,770	3.0
Jan 05	79,986	Jan 06	72,829	9.8	YEAR TO DATE, FIRST WEEK		

### WEEKLY ELECTRIC OUTPUT INDEX--TOTAL U.S.\*

SEASONALLY ADJUSTED 1982 = 100

Week Ended	2008	Week Ended	2007	Week Ended	2006
Dec 15	180	Dec 16	173	Dec 17	185
Dec 22	180	Dec 23	170	Dec 24	191
Dec 29	175	Dec 30	169	Dec 31	167
Jan 05	192	Jan 06	171	Jan 07	167

\* Excludes Alaska and Hawaii.

+ Includes investor-owned companies, cooperatives and government-owned utilities.

Copyright © 2008 Edison Electric Institute. All rights reserved.

## WEEKLY ELECTRIC OUTPUT BY GEOGRAPHIC DIVISION (48 CONTIGUOUS STATES)

	Week Ended			NMA CUMULATIVE JANUARY 1 to			52 Weeks Ended		
	5-Jan 2008 GWh Output	6-Jan 2007 GWh Output	% Increase Over Corresponding Week of 2007	5-Jan 2008 GWh Output	6-Jan 2007 GWh Output	% Increase Over Corresponding Week of 2007	5-Jan 2008 GWh Output	6-Jan 2007 GWh Output	% Increase Over Corresponding Week of 2007
<b>New England</b>	2,669	2,452	8.8%	<b>2,669</b>	<b>2,452</b>	<b>8.8%</b>	134,663	131,645	2.3%
<b>Mid-Atlantic</b>	8,909	7,902	12.7%	<b>8,909</b>	<b>7,902</b>	<b>12.7%</b>	459,677	443,242	3.7%
<b>Central Industrial</b>	14,001	12,940	8.2%	<b>14,001</b>	<b>12,940</b>	<b>8.2%</b>	723,201	694,292	4.2%
<b>West Central</b>	6,580	6,121	7.5%	<b>6,580</b>	<b>6,121</b>	<b>7.5%</b>	352,676	344,042	2.5%
<b>Southeast</b>	22,133	18,843	17.5%	<b>22,133</b>	<b>18,843</b>	<b>17.5%</b>	1,109,948	1,071,689	3.6%
<b>South Central</b>	11,588	10,642	8.9%	<b>11,588</b>	<b>10,642</b>	<b>8.9%</b>	599,081	599,470	-0.1%
<b>Rocky Mountain</b>	5,331	4,868	9.5%	<b>5,331</b>	<b>4,868</b>	<b>9.5%</b>	277,894	261,163	6.4%
<b>Pacific Northwest</b>	4,056	3,672	10.5%	<b>4,056</b>	<b>3,672</b>	<b>10.5%</b>	159,462	151,678	5.1%
<b>Pacific Southwest</b>	<u>4,719</u>	<u>5,389</u>	-12.4%	<u><b>4,719</b></u>	<u><b>5,389</b></u>	<u><b>-12.4%</b></u>	<u>291,169</u>	<u>291,922</u>	-0.3%
<b>Total United States *</b>	79,986	72,829	9.8%	<b>79,986</b>	<b>72,829</b>	<b>9.8%</b>	4,107,771	3,989,143	3.0%

**Notes:** EEI output data are an estimate of electricity load made available for distribution derived as weekly net generation + purchases from non-utilities + net imports - exports - sales for resale. It is not meant to be a measure of electricity generation for the U.S. EEI survey data represent the majority of national distribution (large utilities, large government power projects, some independent and large municipal power projects). The remaining segment of the industry (smaller producers) is estimated. Non-utility generation is captured via direct sales to utilities.

\* Excludes Alaska and Hawaii

\*\* Less than one-tenth of one percent

SOURCE: Edison Electric Institute (EEI), *Weekly Electric Output Report*.

AMERICAN IRON AND STEEL INSTITUTE  
 1140 Connecticut Avenue, Suite 705  
 Washington, D.C. 20036

January 7, 2008

**ESTIMATED WEEKLY RAW STEEL\* PRODUCTION**

<u>Period</u>	<u>Thousand Net Tons</u>	<u>Percent Change from Previous Period</u>	<u>Percent Capability Utilization**</u>	<u>Production by District</u>		
				<u>Week Ending</u>		
				<u>Jan 5</u>	<u>Dec 29</u>	
<b><u>Week Ending</u></b>				North East Coast	152	154
				Pgh/Youngstown	176	183
				Lake Erie	104	107
				Detroit	131	119
				Indiana/Chicago	540	538
				Midwest	250	257
				Southern	586	596
				Western	88	87
				Total	2027	2041
<b><u>Year-to-Date+</u></b>						
Jan 5, 2008	2,027	-0.6	85.0			
Jan 5, 2007	1,877	7.9	78.2			
Dec 29, 2007	2,041	-1.9	85.6			
Jan 5, 2008	2,027	7.9	85.0			
Jan 5, 2007	1,877	-	78.2			

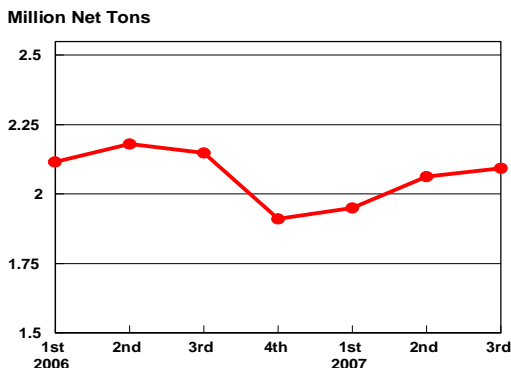
\*Raw steel production tonnage included in this report is estimated based on a sampling of steel producers. Therefore, this report should be used primarily to assess production trends. The AISI production report "AIS 7," produced monthly and available by subscription, provides a more accurate summary of steel production based on data supplied by companies representing approximately 75% of U.S. production capacity.

+Includes revisions for previous months

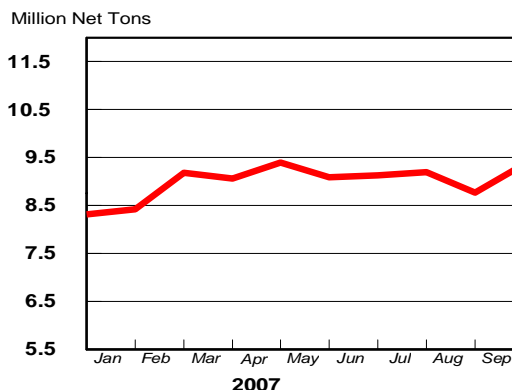
NOTE: Capability for the Fourth Quarter 2007 is approximately 31.3 million net tons vs 30.7 million net tons for the same period last year, and 30.1 million tons for the third quarter of 2007.

Capability -	2003 approx.	2.3 million tons/week
	2004	2.2
	2005	2.3
	2006	2.4
	2007	2.4

**Average Weekly Raw Steel Production**

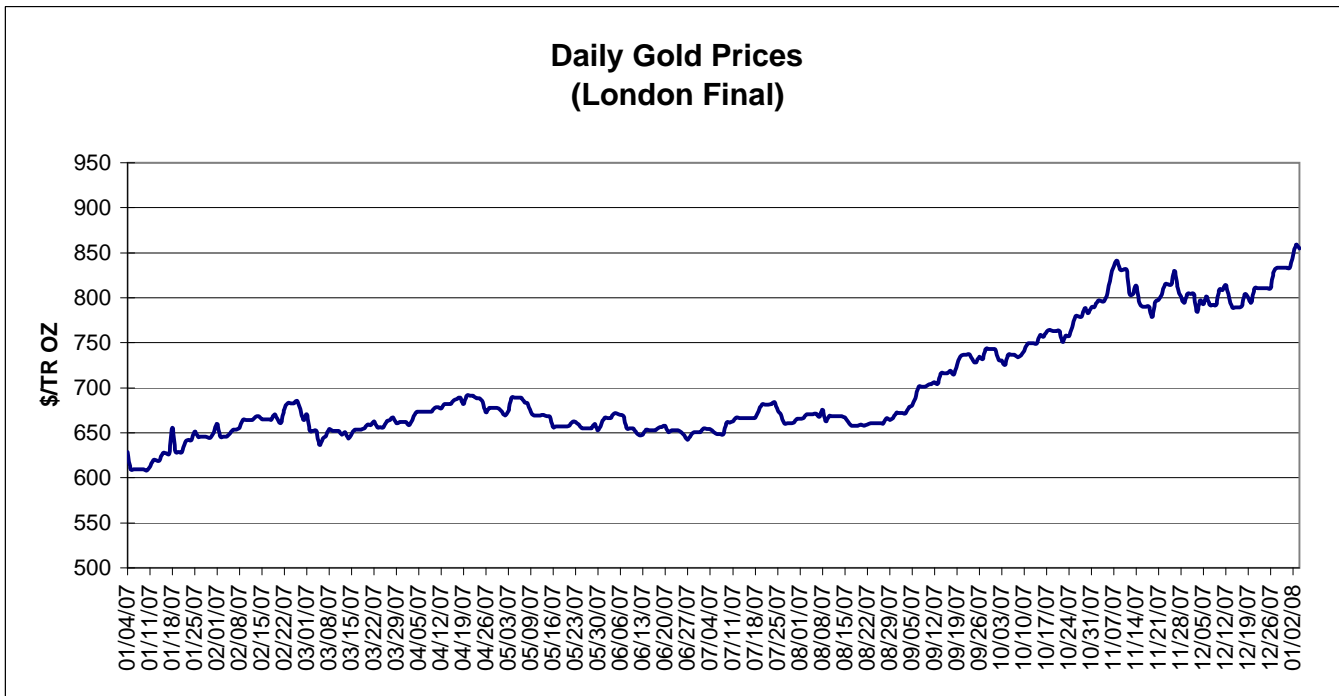
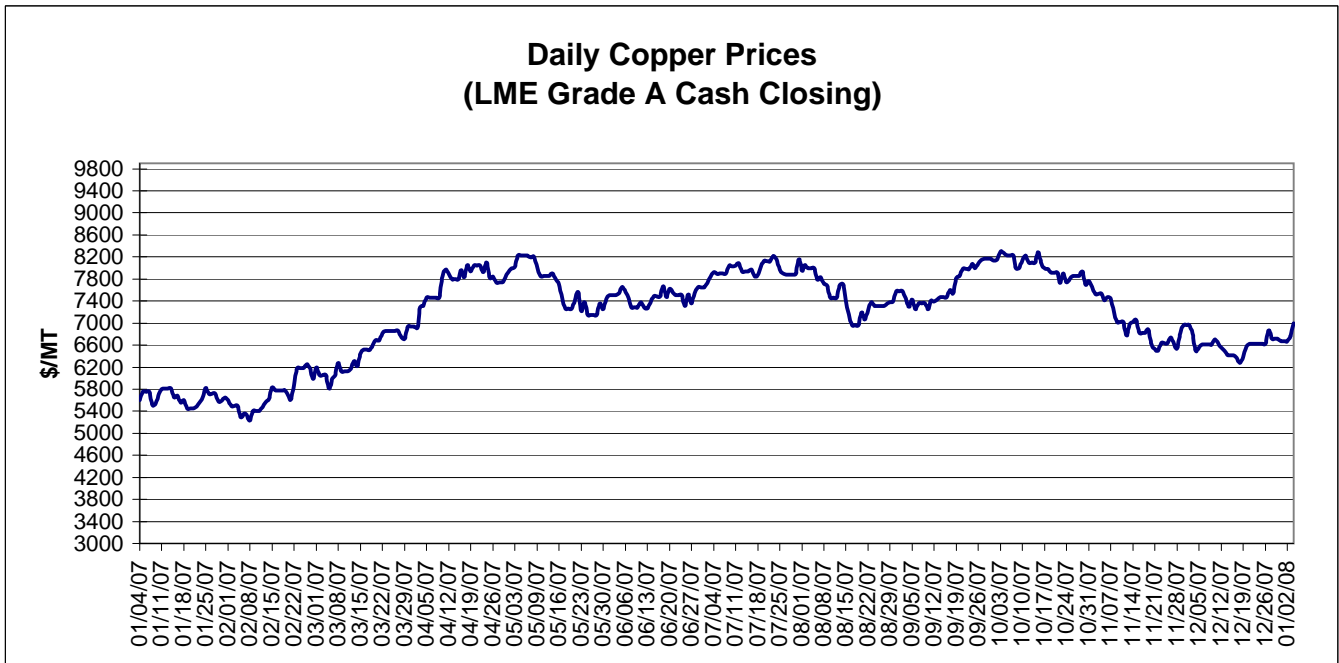


**MONTHLY RAW STEEL PRODUCTION**



\*Steel in the first solid state after melting suitable for further processing or sale, including ingots, steel for castings and strand or pressure cast blooms, slabs, or other product forms.

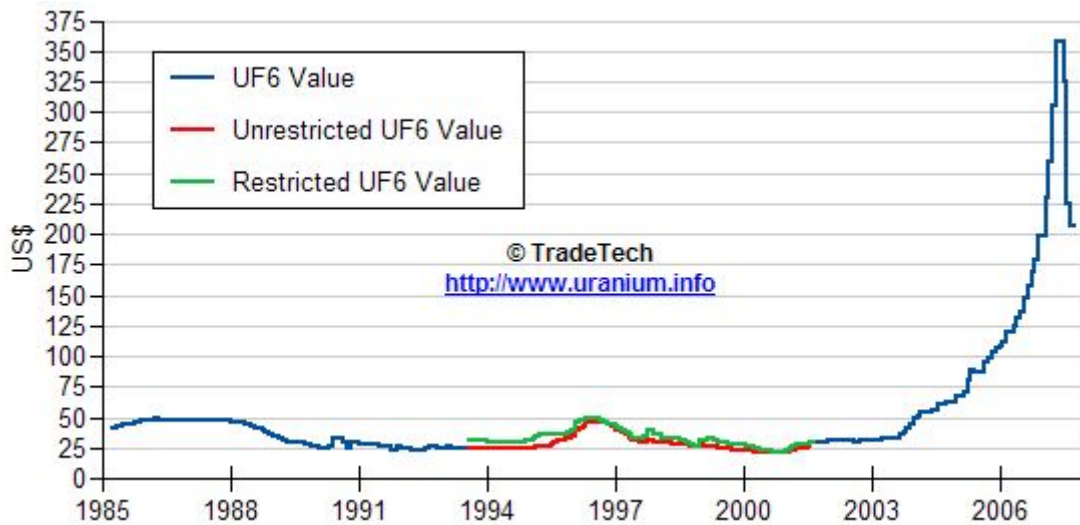
\*\* Based on tonnage capability to produce raw steel for a sustained full order book.



Data reflect closings on weekends and holidays.

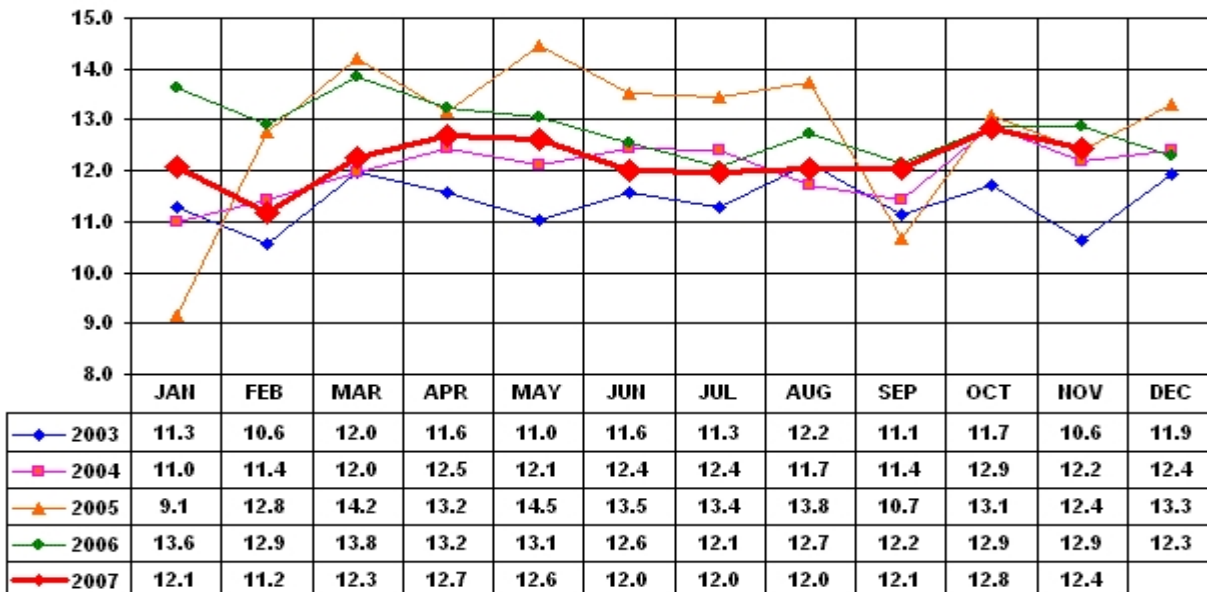
Source: Platts Metals Week

### Trade Tech's Uranium (UF6) Monthly Spot Prices (US\$/kg as UF6)



Source: Trade Tech, Uranium Info Website – <http://www.uranium.info>

### Coal and Coke Monthly Tonnage Indicator for Internal U.S. Waterways



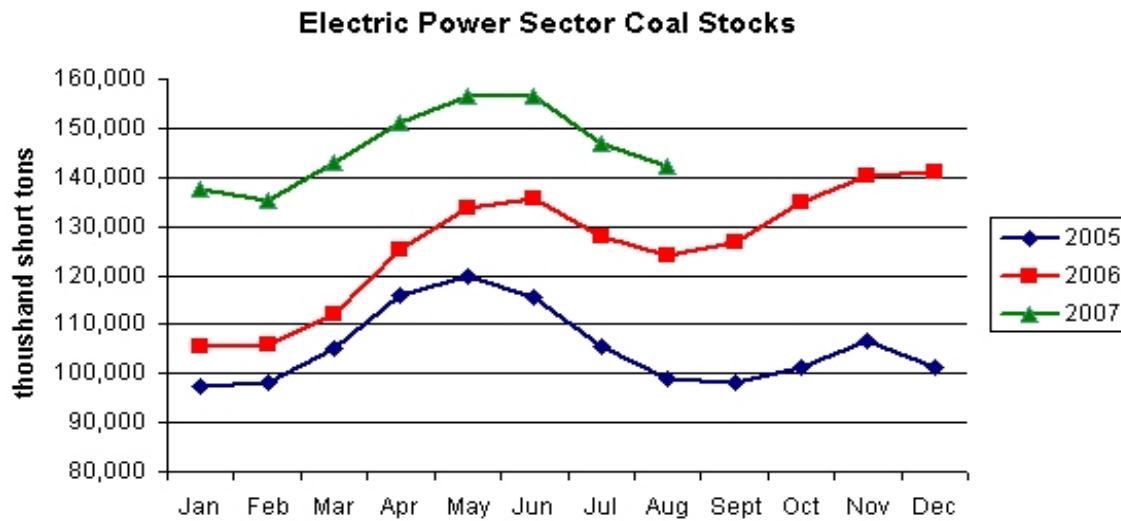
Source: U.S. Army Corps of engineers, Waterborne Commerce Statistics Center

**EIA Weekly Spot Coal Prices**

The following average spot coal prices appear in the graphic below, for the previous and most recent weeks:

Week Ended	Central Appalachia 12,500 Btu, 1.2 SO2	Northern Appalachia 13,000 Btu, <3.0 SO2	Illinois Basin 11,800 Btu, 5.0 SO2	Powder River Basin 8,800 Btu, 0.8 SO2	Uinta Basin 11,700 Btu, 0.8 SO2
23-Nov-07	\$52.95	\$55.25	\$33.50	\$11.05	\$24.00
30-Nov-07	\$56.80	\$55.25	\$33.50	\$11.15	\$24.00
07-Dec-07	\$57.70	\$55.25	\$33.50	\$11.50	\$24.00
14-Dec-07	\$57.70	\$55.25	\$33.50	\$11.50	\$24.00
21-Dec-07	\$57.70	\$55.25	\$33.50	\$11.50	\$24.00
04-Jan-08	\$58.30	\$61.75	\$34.00	\$11.60	\$24.00

Source: Energy Information Administration (from Platts *Coal Outlook*, "Weekly Price Survey")



Source: Energy Information Administration