
National Mining Association

Weekly Statistical Summary

November 14, 2008 Edition
(Data for Week Ending November 8, 2008)

Prepared by
National Mining Association



Suite 500 East, 101 Constitution Avenue, NW
Washington, DC, 20001
Phone (202) 463-2600
Visit us at <http://www.nma.org>

NMA Weekly Statistical Summary

Vol. 46, No. 45
Dated 11/14/08

PRODUCTION, CONSUMPTION & TRADE						
	Week Ended			* Cumulative Jan 1 to		
	11/08/08	11/10/07	% Chng	11/08/08	11/08/07	% Chng
EIA Coal Production (000 Tons):						
Week Ended/Year to Date	22,962	22,936	0.1%	998,857	982,951	1.6%
52 Weeks Ended	1,156,891	1,146,016	0.9%			
* Due to leap year, 2008 cumulative reflects one extra day of tonnage.						
	October 08/07		% Chng	Jan - Oct 08/07		% Chng
Month Ended -- October	103,886	98,825	5.1%	974,150	956,588	1.8%
MONTH ENDED AND CUMULATIVE NUMBERS ARE PRELIMINARY AND SUBJECT TO CHANGE						
DOC Bituminous Coal Trade (000 Tons)						
	Aug 08/07		% Chng	Jan - Aug 08/07		% Chng
Exports:						
Metallurgical	2,881	3,237	-11.0%	27,489	21,125	30.1%
Steam	2,351	2,172	8.2%	22,690	15,697	44.5%
Imports:	3,144	3,716	-15.4%	22,335	24,280	-8.0%
	Week Ended			* Cumulative Jan 1 to		
	11/08/08	11/10/07	% Chng	11/08/08	11/10/07	% Chng
EEl Electric Output (Mil. Kwh)	70,004	72,953	-4.0%	3,527,274	3,564,496	-1.0%
AISI Raw Steel Output (000 Tons)	1,556	2,110	-26.3%	92,002	92,570	-0.6%
EIA U.S. PETROLEUM DATA						
4-Week Averages 000 Barrels per Day						
	Week Ending			Cumulative Daily Averages		
	11/07/08	11/07/07	% Chng	2008	2007	% Chng
PETROLEUM SUPPLY:						
Domestic Crude	4,742	5,038	-5.9	4,946	5,069	-2.4
Net Imports (Incl. SPR)	10,026	9,774	2.6	9,766	10,017	-2.5
SPR Stocks W/D or Added	11	-44	--	-16	-19	--
Other Stocks W/D or added	-134	153	--	-84	21	--
Natural Gas Liquids Prod.	2,340	2,496	-6.3	2,261	2,388	-5.3



NMA

THE AMERICAN RESOURCE National Mining Association Web Site: [http:// www.nma.org](http://www.nma.org)

EIA Estimated Weekly U.S. Coal Production Overview (Thousand Short Tons)

Coal-Producing Region and State	Week Ended			Year-To-Date			52 Weeks Ended		
	11/8/2008	11/1/2008	11/10/2007	11/8/2008	11/8/2007	Percent Change	11/8/2008	11/10/2007	Percent Change
Alabama	403	397	399	17,739	16,773	5.8	20,407	19,188	6.4
Alaska	27	26	30	1,205	1,129	6.7	1,394	1,339	4.1
Arizona	157	154	145	6,553	6,957	-5.8	7,549	8,058	-6.3
Arkansas	1	1	2	50	70	-27.9	63	75	-16.7
Colorado	695	685	721	30,952	31,318	-1.2	35,828	36,389	-1.5
Illinois	604	595	542	26,413	29,117	-9.3	30,030	33,638	-10.7
Indiana	728	717	686	30,549	30,210	1.1	35,192	35,072	0.3
Kansas	6	6	8	260	364	-28.7	314	444	-29.3
Kentucky Total	2,236	2,202	2,288	102,859	99,668	3.2	118,231	115,284	2.6
Eastern	1,668	1,643	1,716	77,499	75,371	2.8	89,031	87,233	2.1
Western	568	560	572	25,360	24,297	4.4	29,200	28,051	4.1
Louisiana	97	81	72	3,378	2,469	36.8	4,017	3,090	30.0
Maryland	56	56	52	2,042	1,987	2.8	2,346	2,355	-0.4
Mississippi	54	54	72	2,667	3,149	-15.3	3,045	3,654	-16.7
Missouri	6	6	5	197	202	-2.6	230	243	-5.5
Montana	893	880	966	36,813	36,519	0.8	43,421	42,502	2.2
New Mexico	618	608	508	21,872	20,976	4.3	25,239	24,675	2.3
North Dakota	593	583	603	24,847	25,429	-2.3	28,904	29,741	-2.8
Ohio	485	478	474	21,395	19,240	11.2	24,626	22,289	10.5
Oklahoma	35	35	32	1,321	1,428	-7.5	1,535	1,670	-8.1
Pennsylvania Total	1,242	1,223	1,274	56,636	56,374	0.5	65,185	65,158	*
Anthracite	21	21	34	1,234	1,339	-7.9	1,456	1,549	-6.0
Bituminous	1,221	1,202	1,240	55,402	55,034	0.7	63,729	63,609	0.2
Tennessee	52	52	56	2,176	2,274	-4.3	2,546	2,632	-3.3
Texas	758	747	884	32,766	35,767	-8.4	38,703	42,054	-8.0
Utah	470	463	538	20,638	20,627	0.1	24,203	24,340	-0.6
Virginia	523	515	438	21,016	22,510	-6.6	23,871	26,351	-9.4
Washington	--	--	--	--	--	--	0	101	-100.0
West Virginia Total	3,147	3,099	2,995	138,331	132,632	4.3	158,562	152,592	3.9
Northern	818	805	790	35,899	36,746	-2.3	41,200	42,050	-2.0
Southern	2,330	2,294	2,205	102,432	95,886	6.8	117,362	110,542	6.2
Wyoming	9,074	9,142	9,147	396,180	385,763	2.7	461,451	453,082	1.8
Appalachian Total	7,578	7,462	7,403	336,835	327,160	3.0	386,574	377,798	2.3
Interior Total	2,858	2,801	2,875	122,962	127,073	-3.2	142,328	147,992	-3.8
Western Total	12,527	12,542	12,658	539,060	528,718	2.0	627,988	620,226	1.3
East of Miss. River	9,532	9,387	9,275	421,824	413,933	1.9	484,041	478,213	1.2
West of Miss. River	13,430	13,417	13,661	577,032	569,018	1.4	672,850	667,803	0.8
Bituminous and Lignite	22,941	22,783	22,902	997,623	981,612	1.6	1,155,435	1,144,467	1.0
Anthracite	21	21	34	1,234	1,339	-7.9	1,456	1,549	-6.0
U.S. Total	22,962	22,804	22,936	998,857	982,951	1.6	1,156,891	1,146,016	0.9
Railroad Cars Loaded	154,103	151,751	153,021	6,642,698	6,414,859	3.6	7,631,871	7,408,854	3.0

Source: Energy Information Administration



Volume 76 No. 45

OUTPUT FOR WEEK ENDED - Nov 08, 2008

Nov 12, 2008

The net available amount of electric energy distributed by the Total Electric Utility Industry* for the week ended Saturday, Nov 08, 2008 was 70,004 gigawatt-hours (GWh), according to the Edison Electric Institute. This is equivalent to 177 on the weekly electric output index.

WEEKLY ELECTRIC OUTPUT BY GEOGRAPHIC DIVISION
(48 CONTIGUOUS STATES)

	Week Ended November 08		52 Weeks Ended November 08	
	GWh Output	% Increase Over Corresponding Week of 2007	GWh Output	% Increase Over Corresponding Period of 2007
New England	2,321	-5.0	131,487	-1.6
Mid-Atlantic	7,761	-5.5	451,269	-0.9
Central Industrial	12,313	-5.8	707,665	-1.6
West Central	6,033	-1.9	345,416	-1.6
Southeast	18,316	-6.2	1,088,885	-1.3
South Central	9,661	-1.8	602,949	1.0
Rocky Mountain	5,368	-1.4	276,923	0.7
Pacific Northwest	3,051	-1.0	167,711	6.1
Pacific Southwest	5,180	-0.2	291,085	-0.6
Total United States	70,004	-4.0	4,063,390	-0.6

WEEKLY ELECTRIC OUTPUT IN PREVIOUS WEEKS--GWh

Week Ended	2008	Week Ended	2007	% Inc. (08/07)	52 Weeks Ended	2008	% Inc. (08/07)
Oct 18	72,773	Oct 20	73,975	-1.6	Oct 18	4,067,478	-0.4
Oct 25	72,073	Oct 27	73,267	-1.6	Oct 25	4,066,283	-0.5
Nov 01	70,879	Nov 03	70,822	0.1	Nov 01	4,066,340	-0.4
Nov 08	70,004	Nov 10	72,953	-4.0	Nov 08	4,063,390	-0.6
Nov 08	3,527,274	Nov 10	3,564,496	-1.0	YEAR TO DATE, FIRST 45 WEEKS		

WEEKLY ELECTRIC OUTPUT INDEX--TOTAL U.S.*
SEASONALLY ADJUSTED 1982 = 100

Week Ended	2008	Week Ended	2007	Week Ended	2006
Oct 18	184	Oct 20	186	Oct 21	178
Oct 25	183	Oct 27	185	Oct 28	180
Nov 01	179	Nov 03	177	Nov 04	176
Nov 08	177	Nov 10	185	Nov 11	182

* Excludes Alaska and Hawaii.

+ Includes investor-owned companies, cooperatives and government-owned utilities.

Copyright © 2008 Edison Electric Institute. All rights reserved.

**WEEKLY ELECTRIC OUTPUT BY GEOGRAPHIC DIVISION
(48 CONTIGUOUS STATES)**

	Week Ended			NMA CUMULATIVE JANUARY WEEK ONE TO			52 Weeks Ended		
	8-Nov 2008 GWh Output	10-Nov 2007 GWh Output	% Increase Over Corresponding Week of 2007	8-Nov 2008 GWh Output	10-Nov 2007 GWh Output	% Increase Over Corresponding Week of 2007	8-Nov 2008 GWh Output	10-Nov 2007 GWh Output	% Increase Over Corresponding Week of 2007
New England	2,321	2,443	-5.0%	113,255	116,214	-2.5%	131,487	133,609	-1.6%
Mid-Atlantic	7,761	8,210	-5.5%	390,500	397,896	-1.9%	451,269	455,551	-0.9%
Central Industrial	12,313	13,074	-5.8%	611,165	625,638	-2.3%	707,665	719,172	-1.6%
West Central	6,033	6,152	-1.9%	299,038	305,837	-2.2%	345,416	350,957	-1.6%
Southeast	18,316	19,519	-6.2%	946,087	963,861	-1.8%	1,088,885	1,103,680	-1.3%
South Central	9,661	9,841	-1.8%	530,278	525,465	0.9%	602,949	597,248	1.0%
Rocky Mountain	5,368	5,441	-1.3%	238,979	239,485	-0.2%	276,923	274,863	0.7%
Pacific Northwest	3,051	3,081	-1.0%	142,459	133,828	6.4%	167,711	158,062	6.1%
Pacific Southwest	5,180	5,192	-0.2%	255,516	256,271	-0.3%	291,085	292,903	-0.6%
Total United States *	70,004	72,953	-4.0%	3,527,277	3,564,495	-1.0%	4,063,390	4,086,045	-0.6%

Notes: EEI output data are an estimate of electricity load made available for distribution derived as weekly net generation + purchases from non-utilities + net imports - exports - sales for resale. It is not meant to be a measure of electricity generation for the U.S. EEI survey data represent the majority of national distribution (large utilities, large government power projects, some independent and large municipal power projects). The remaining segment of the industry (smaller producers) is estimated. Non-utility generation is captured via direct sales to utilities.

* Excludes Alaska and Hawaii

** Less than one-tenth of one percent

SOURCE: Edison Electric Institute (EEI), *Weekly Electric Output Report*.

AMERICAN IRON AND STEEL INSTITUTE
 1140 Connecticut Avenue, Suite 705
 Washington, D.C. 20036

November 10, 2008

ESTIMATED WEEKLY RAW STEEL* PRODUCTION

Period	Thousand Net Tons	Percent Change from Previous Period	Percent Capability Utilization**	Production by District		
				Week Ending Nov. 8	Week Ending Nov. 1	
Week Ending				North East Coast	147	136
November 8, 2008	1,556	-3.1	65.2	Pgh/Youngstown	157	167
November 8, 2007	2,110	-26.3	88.5	Lake Erie	44	38
November 1, 2008	1,605	-4.5	67.3	Detroit	75	66
				Indiana/Chicago	366	346
				Midwest	220	234
				Southern	480	545
				Western	67	73
				Total	1,556	1,605
Year-to-Date+						
November 8, 2008	92,002	-0.7	86.2			
November 8, 2007	92,570	-	86.6			

*Raw steel production tonnage included in this report is estimated based on a sampling of steel producers. Therefore, this report should be used primarily to assess production trends. The AISI production report "AIS 7," produced monthly and available by subscription, provides a more accurate summary of steel production based on data supplied by companies representing approximately 75% of U.S. production capacity.

+ Includes revisions for previous months

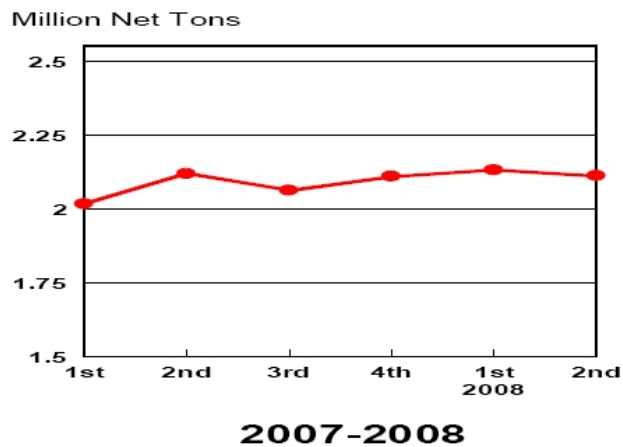
NOTE: Capability for the Third Quarter 2008 is approximately 31.4 million net tons vs 30.1 million net tons for the same period last year, and 31.0 million tons for the second quarter of 2008.

Capability -	2004 approx.	2.2 million tons/week
	2005	2.3
	2006	2.4
	2007	2.4
	2008	2.4

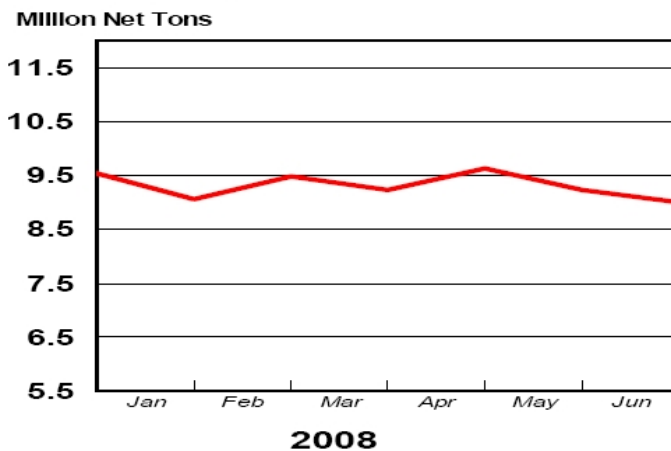
*Steel in the first solid state after melting suitable for further processing or sale, including ingots, steel for castings and strand or pressure cast blooms, slabs, or other product forms.

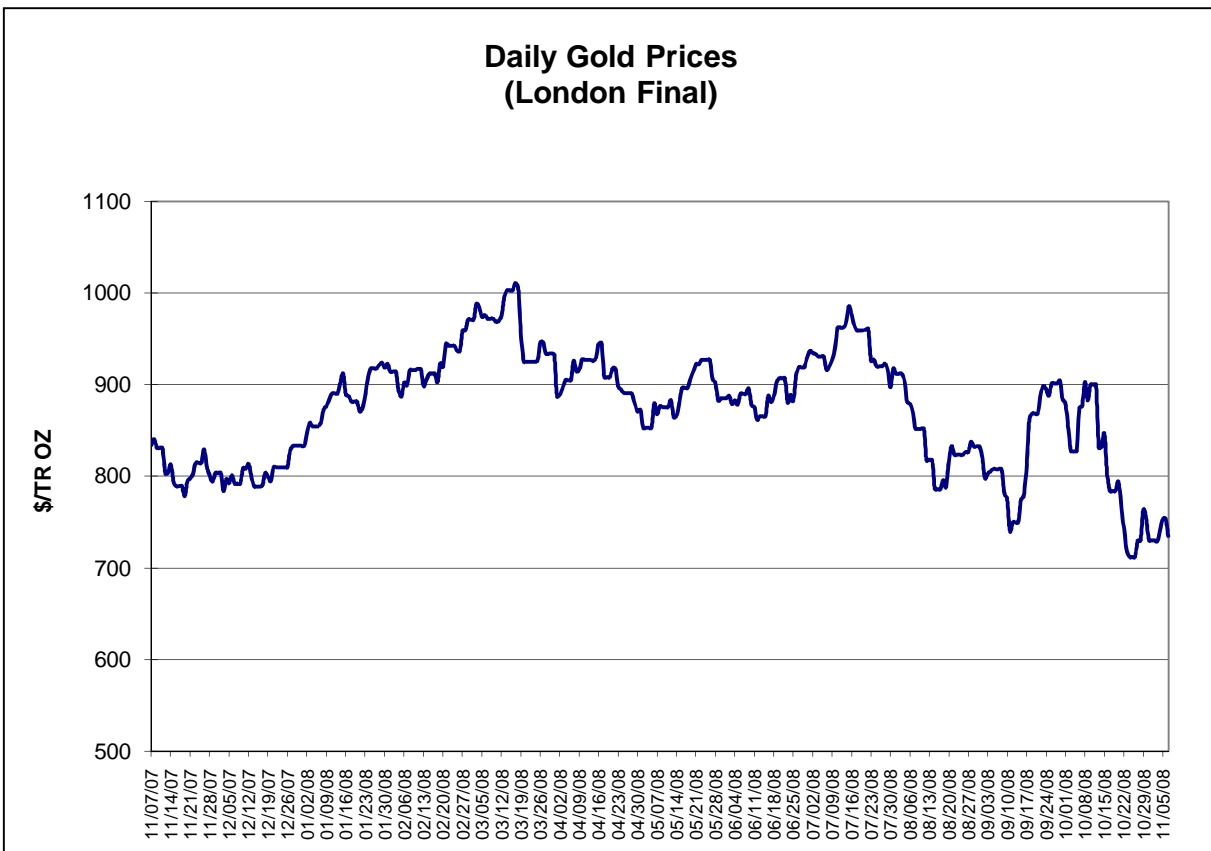
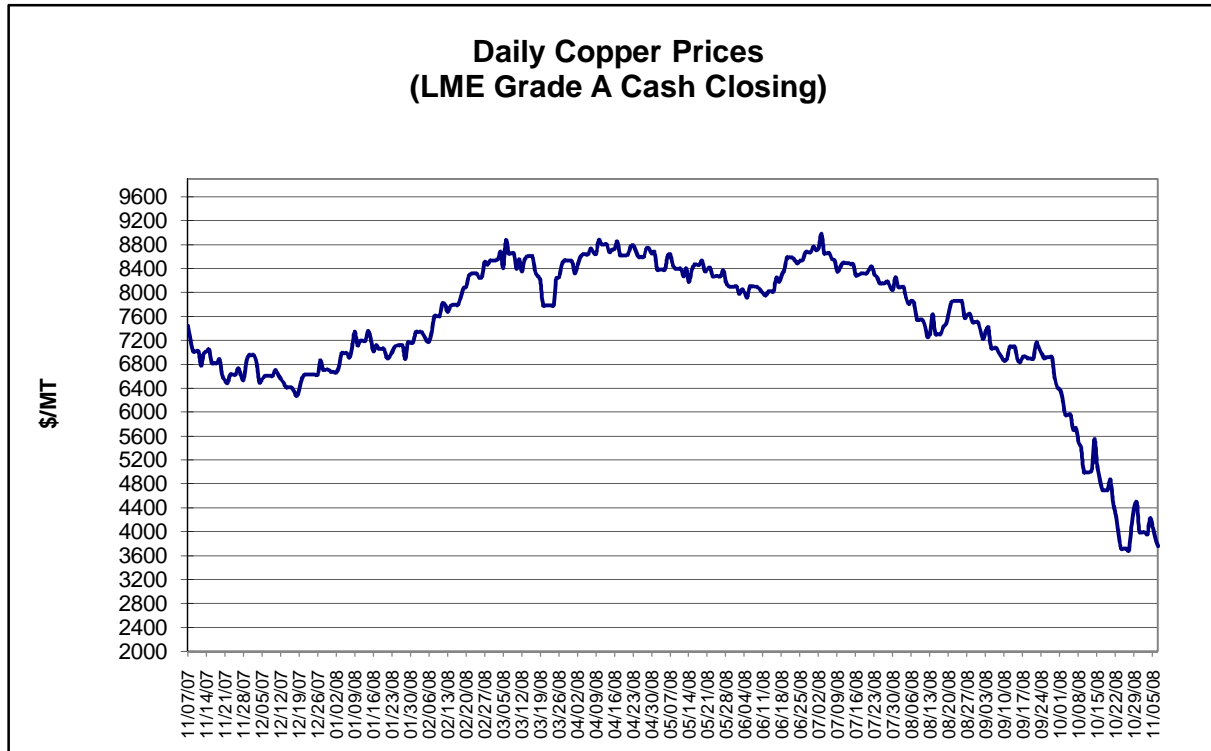
** Based on tonnage capability to produce raw steel for a sustained full order book.

Average Weekly Raw Steel Production



Monthly Raw Steel Production

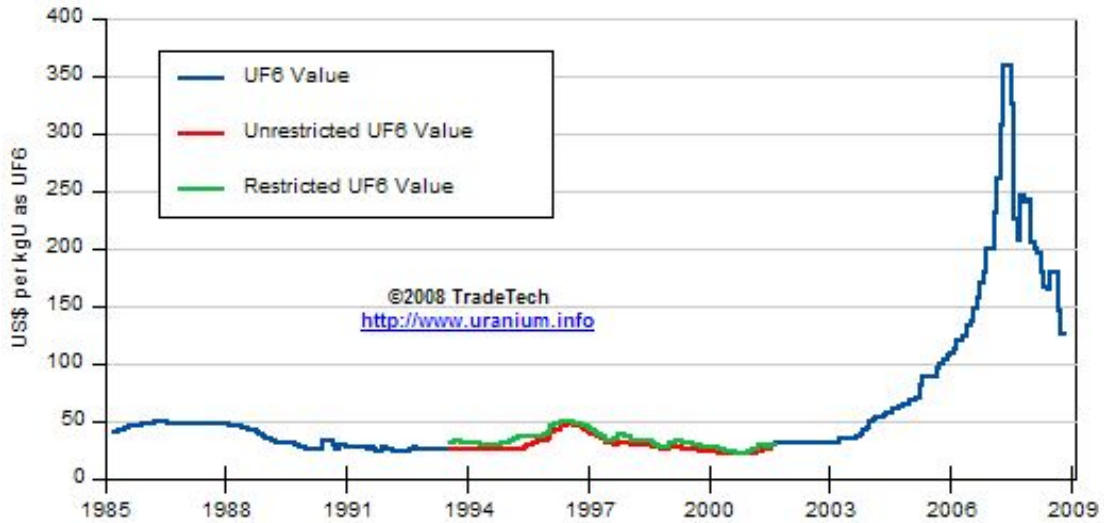




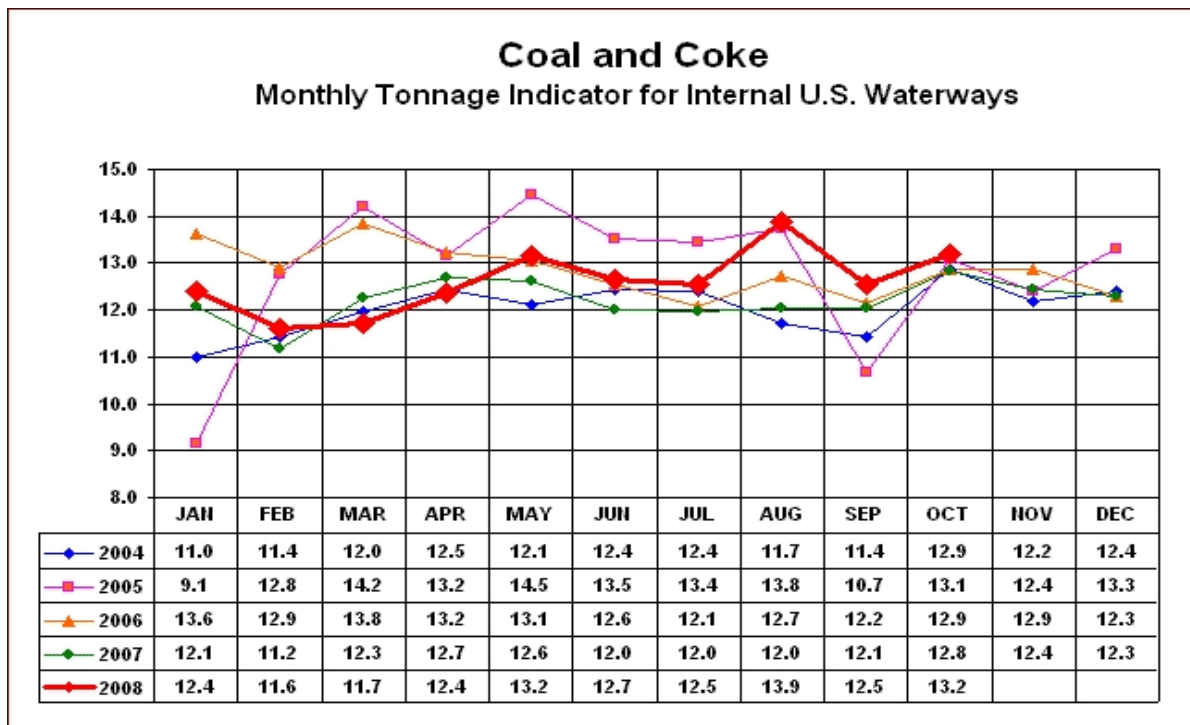
Data reflect closings on weekends and holidays.

Source: Platts Metals Week

Trade Tech's Uranium (UF6) Monthly Spot Prices (US\$/kg as UF6)



Source: Trade Tech, Uranium Info Website – <http://www.uranium.info>

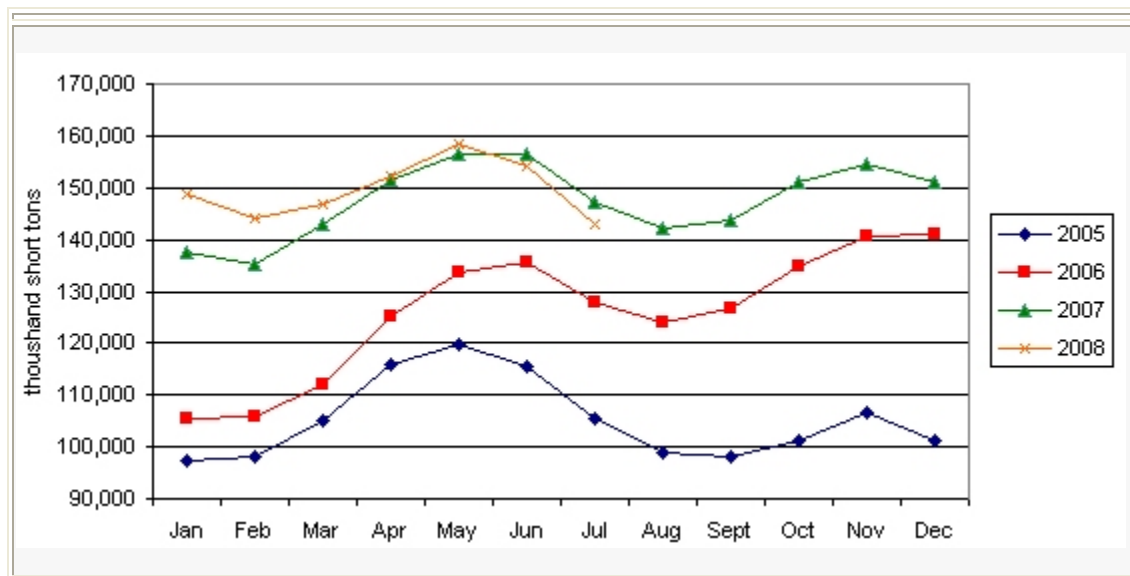


Source: U.S. Army Corps of Engineers, Waterborne Commerce Statistics Center

Average Weekly Coal Commodity Spot Prices (Dollars per Short Ton)					
Week Ended	Central Appalachia 12,500 Btu, 1.2 SO2	Northern Appalachia 13,000 Btu, <3.0 SO2	Illinois Basin 11,800 Btu, 5.0 SO2	Powder River Basin 8,800 Btu, 0.8 SO2	Uinta Basin 11,700 Btu, 0.8 SO2
26-Sep-08	\$135.00	\$150.00	\$84.00	\$11.25	\$61.00
03-Oct-08	\$133.00	\$143.00	\$84.00	\$14.50	\$61.00
10-Oct-08	\$133.00	\$138.00	\$84.00	\$14.50	\$61.00
17-Oct-08	\$133.00	\$138.00	\$84.00	\$14.50	\$61.00
24-Oct-08	\$119.25	\$123.00	\$84.00	\$14.50	\$61.00
31-Oct-08	\$119.25	\$111.50	\$84.00	\$14.50	\$73.00
07-Nov-08	\$119.25	\$111.50	\$84.00	\$14.50	\$73.00

Source: Energy Information Administration (from Platts *Coal Outlook*, "Weekly Price Survey")

EIA Electric Power Sector Coal Stocks



Source: Energy Information Administration

USGS Production of Selected Mineral Commodities	2008 Year to Date - 2nd Quarter	2007 Year to Date - 2nd Quarter	Percent Change
Aluminum, secondary (000 Mt.)	445.0	477.0	-7%
Cement (Mil. Mt.)	41.1	43.7	-6%
Gypsum (Mil. Mt.)	9.4	10.9	-14%
Iron Ore (Mil. Mt.)	26.8	25.1	7%
Phosphate rock (Mil. Mt.)	15.3	14.7	4%
Sand & gravel, construction (Mil. Mt.)	477.0	533.0	-11%
Soda ash (Mil. Mt.)	5.6	5.5	2%
Stone, crushed (Mil. Mt.)	664.0	730.0	-9%
Zinc (000 Mt.)	420.0	365.0	15%

Source: U.S. Geological Survey, Mineral Industry Surveys, *U.S. Production of Selected Mineral Commodities in the Second Quarter 2008*, August 2008