
National Mining Association

Weekly Statistical Summary

November 2, 2007 Edition
(Data for Week Ending October 27, 2007)

Prepared by
National Mining Association



Suite 500 East, 101 Constitution Avenue, NW
Washington, DC, 20001
Phone (202) 463-2600
Visit us at <http://www.nma.org>

NMA Weekly Statistical Summary

Vol. 45, No. 43
Dated 11/02/07

| PRODUCTION, CONSUMPTION & TRADE | | | | | | |
|--|-----------------|-----------|--------|---------------------------|-----------|--------|
| | Week Ended | | | Cumulative Jan 1 to | | |
| | 10/27/07 | 10/28/06 | % Chng | 10/27/07 | 10/28/06 | % Chng |
| EIA Coal Production (000 Tons): | | | | | | |
| Week Ended/Year to Date | 22,337 | 22,625 | -1.3% | 945,211 | 959,112 | -1.4% |
| 52 Weeks Ended | 1,147,165 | 1,154,066 | -0.6% | | | |
| Month Ended -- September | | | | | | |
| | September 07/06 | | % Chng | Jan - Sep 07/06 | | % Chng |
| | 93,029 | 94,144 | -1.2% | 857,912 | 871,353 | -1.5% |
| MONTH ENDED AND CUMULATIVE NUMBERS ARE PRELIMINARY AND SUBJECT TO CHANGE | | | | | | |
| DOC Bituminous Coal Trade (000 Tons) | | | | | | |
| Exports: | August 07/06 | | % Chng | Jan - Aug 07/06 | | % Chng |
| | | | | | | |
| Metallurgical | 3,237 | 2,807 | 15.3% | 21,125 | 18,011 | 17.3% |
| Steam | 2,172 | 2,277 | -4.6% | 15,697 | 13,459 | 16.6% |
| Imports: | 3,716 | 3,849 | -3.5% | 24,280 | 23,943 | 1.4% |
| EI Electric Output (Mil. Kwh) | | | | | | |
| | Week Ended | | | Cumulative Jan 1 to | | |
| | 10/27/07 | 10/28/06 | % Chng | 10/27/07 | 10/28/06 | % Chng |
| EI Electric Output (Mil. Kwh) | 73,267 | 72,427 | 1.2% | 3,420,721 | 3,324,068 | 2.9% |
| AISI Raw Steel Output (000 Tons) | 2,088 | 2,063 | 1.2% | 87,878 | 91,808 | -4.3% |
| EIA U.S. PETROLEUM DATA | | | | | | |
| 4-Week Averages 000 Barrels per Day | | | | | | |
| PETROLEUM SUPPLY: | Week Ending | | | Cumulative Daily Averages | | |
| | 10/26/07 | 10/26/06 | % Chng | 2007 | 2006 | % Chng |
| Domestic Crude | 5,099 | 5,099 | 0.0 | 5,154 | 5,095 | 1.2 |
| Net Imports (Incl. SPR) | 9,666 | 10,136 | -4.6 | 9,964 | 10,166 | -2.0 |
| SPR Stocks W/D or Added | -41 | -22 | -- | -18 | -13 | -- |
| Other Stocks W/D or added | 324 | -190 | -- | 9 | -48 | -- |
| Natural Gas Liquids Prod. | 2,489 | 2,342 | 6.3 | 2,382 | 2,196 | 8.5 |



EIA Estimated Weekly U.S. Coal Production Overview (Thousand Short Tons)

| Coal-Producing Region and State | Week Ended | | | Year to Date | | Percent Change | 52 Weeks Ended | | |
|---------------------------------|---------------|---------------|---------------|----------------|----------------|----------------|------------------|------------------|----------------|
| | 10/27/2007 | 10/20/2007 | 10/28/2006 | 10/27/2007 | 10/27/2006 | | 10/27/2007 | 10/28/2006 | Percent Change |
| Alabama | 365 | 361 | 364 | 16,208 | 15,984 | 1.4 | 19,243 | 19,292 | -0.3 |
| Alaska | 28 | 28 | 31 | 1,248 | 1,161 | 7.5 | 1,513 | 1,379 | 9.7 |
| Arizona | 130 | 129 | 167 | 6,556 | 6,823 | -3.9 | 7,950 | 8,720 | -8.8 |
| Arkansas | 1 | 1 | 1 | 49 | 16 | 202.3 | 56 | 17 | 232.7 |
| Colorado | 703 | 696 | 741 | 30,572 | 29,934 | 2.1 | 36,881 | 35,979 | 2.5 |
| Illinois | 653 | 647 | 671 | 28,988 | 27,008 | 7.3 | 34,682 | 32,140 | 7.9 |
| Indiana | 687 | 680 | 721 | 29,450 | 28,992 | 1.6 | 35,553 | 35,050 | 1.4 |
| Kansas | 10 | 10 | 11 | 372 | 326 | 13.9 | 471 | 354 | 33.1 |
| Kentucky Total | 2,267 | 2,244 | 2,317 | 96,383 | 101,478 | -5.0 | 115,980 | 121,867 | -4.8 |
| Eastern | 1,667 | 1,650 | 1,763 | 72,591 | 78,924 | -8.0 | 87,495 | 94,737 | -7.6 |
| Western | 600 | 594 | 554 | 23,792 | 22,553 | 5.5 | 28,485 | 27,131 | 5.0 |
| Louisiana | 78 | 91 | 105 | 2,405 | 3,336 | -27.9 | 3,172 | 4,162 | -23.8 |
| Maryland | 72 | 71 | 55 | 2,789 | 4,591 | -39.2 | 3,252 | 5,450 | -40.3 |
| Mississippi | 70 | 93 | 67 | 3,065 | 3,158 | -3.0 | 3,697 | 3,766 | -1.8 |
| Missouri | 4 | 4 | 6 | 213 | 342 | -37.7 | 265 | 458 | -42.0 |
| Montana | 829 | 821 | 865 | 33,347 | 34,330 | -2.9 | 40,737 | 41,206 | -1.1 |
| New Mexico | 481 | 477 | 551 | 21,216 | 21,247 | -0.1 | 25,870 | 26,248 | -1.4 |
| North Dakota | 570 | 564 | 643 | 23,298 | 24,978 | -6.7 | 28,731 | 30,298 | -5.2 |
| Ohio | 434 | 430 | 453 | 18,418 | 18,887 | -2.5 | 22,238 | 23,168 | -4.0 |
| Oklahoma | 37 | 37 | 36 | 1,498 | 1,693 | -11.5 | 1,804 | 2,024 | -10.9 |
| Pennsylvania Total | 1,230 | 1,217 | 1,304 | 54,331 | 55,123 | -1.4 | 65,364 | 67,020 | -2.5 |
| Anthracite | 33 | 33 | 30 | 1,259 | 1,276 | -1.4 | 1,520 | 1,590 | -4.4 |
| Bituminous | 1,196 | 1,184 | 1,274 | 53,072 | 53,847 | -1.4 | 63,844 | 65,430 | -2.4 |
| Tennessee | 49 | 49 | 54 | 2,252 | 2,353 | -4.3 | 2,703 | 2,889 | -6.5 |
| Texas | 852 | 844 | 859 | 35,122 | 37,685 | -6.8 | 42,873 | 46,180 | -7.2 |
| Utah | 460 | 455 | 551 | 20,121 | 21,344 | -5.7 | 24,782 | 25,617 | -3.3 |
| Virginia | 544 | 538 | 576 | 23,757 | 24,995 | -5.0 | 28,612 | 29,469 | -2.9 |
| Washington | 0 | 0 | 54 | 0 | 2,374 | -100.0 | 205 | 3,194 | -93.6 |
| West Virginia Total | 2,909 | 2,880 | 2,956 | 127,459 | 127,273 | 0.1 | 152,461 | 153,082 | -0.4 |
| Northern | 882 | 873 | 787 | 37,845 | 35,725 | 5.9 | 44,496 | 43,119 | 3.2 |
| Southern | 2,028 | 2,007 | 2,168 | 89,614 | 91,548 | -2.1 | 107,966 | 109,963 | -1.8 |
| Wyoming | 8,871 | 8,632 | 8,465 | 366,094 | 363,682 | 0.7 | 448,069 | 435,037 | 3.0 |
| Appalachian Total | 7,270 | 7,196 | 7,524 | 317,804 | 328,131 | -3.1 | 381,369 | 395,107 | -3.5 |
| Interior Total | 2,994 | 3,002 | 3,032 | 124,954 | 125,110 | -0.1 | 151,058 | 151,281 | -0.1 |
| Western Total | 12,074 | 11,802 | 12,069 | 502,452 | 505,871 | -0.7 | 614,738 | 607,679 | 1.2 |
| East of Miss. River | 9,280 | 9,211 | 9,538 | 403,099 | 409,842 | -1.6 | 483,786 | 493,194 | -1.9 |
| West of Miss. River | 13,057 | 12,790 | 13,088 | 542,111 | 549,270 | -1.3 | 663,379 | 660,872 | 0.4 |
| Bituminous and Lignite | 22,304 | 21,967 | 22,595 | 943,952 | 957,836 | -1.4 | 1,145,644 | 1,152,476 | -0.6 |
| Anthracite | 33 | 33 | 30 | 1,259 | 1,276 | -1.4 | 1,520 | 1,590 | -4.4 |
| U.S. Total | 22,337 | 22,000 | 22,625 | 945,211 | 959,112 | -1.4 | 1,147,165 | 1,154,066 | -0.6 |
| Railroad Cars Loaded | 147,161 | 144,457 | 144,507 | 6,116,769 | 6,175,246 | -0.9 | 7,396,880 | 7,395,405 | * |

Source: Energy Information Administration



WEEKLY ELECTRIC OUTPUT

Essential Energy Information from EEI's Statistics Department

Volume 75 No. 43

OUTPUT FOR WEEK ENDED - Oct 27, 2007

Oct 31, 2007

The net available amount of electric energy distributed by the Total Electric Utility Industry+ for the week ended Saturday, Oct 27, 2007 was **73,267** gigawatthours (GWh), according to the Edison Electric Institute. This is equivalent to **185** on the weekly electric output index.

WEEKLY ELECTRIC OUTPUT BY GEOGRAPHIC DIVISION

(48 CONTIGUOUS STATES)

| | Week Ended October 27 | | 52 Weeks Ended October 27 | |
|---------------------|-----------------------|--|---------------------------|--|
| | GWh Output | % Increase Over Corresponding Week of 2006 | GWh Output | % Increase Over Corresponding Period of 2006 |
| New England | 2,369 | -0.5 | 133,579 | 0.7 |
| Mid-Atlantic | 7,923 | -0.5 | 455,338 | 2.0 |
| Central Industrial | 12,524 | -3.8 | 719,342 | 3.0 |
| West Central | 6,121 | -1.4 | 350,944 | 1.8 |
| Southeast | 21,142 | 3.8 | 1,103,159 | 2.7 |
| South Central | 9,621 | 1.1 | 597,758 | -0.1 |
| Rocky Mountain | 5,050 | 6.6 | 274,093 | 6.0 |
| Pacific Northwest | 3,005 | 3.5 | 157,903 | 4.2 |
| Pacific Southwest | 5,512 | 3.2 | 293,404 | 0.6 |
| Total United States | 73,267 | 1.2 | 4,085,520 | 2.2 |

WEEKLY ELECTRIC OUTPUT IN PREVIOUS WEEKS--GWh

| Week Ended | 2007 | Week Ended | 2006 | % Inc. (07/06) | 52 Weeks Ended | 2007 | % Inc. (07/06) |
|------------|-----------|------------|-----------|----------------|------------------------------|-----------|----------------|
| Oct 06 | 78,867 | Oct 07 | 74,504 | 5.9 | Oct 06 | 4,075,271 | 2.0 |
| Oct 13 | 77,585 | Oct 14 | 70,492 | 10.1 | Oct 13 | 4,082,363 | 2.2 |
| Oct 20 | 73,975 | Oct 21 | 71,658 | 3.2 | Oct 20 | 4,084,679 | 2.3 |
| Oct 27 | 73,267 | Oct 28 | 72,427 | 1.2 | Oct 27 | 4,085,520 | 2.2 |
| Oct 27 | 3,420,721 | Oct 28 | 3,324,068 | 2.9 | YEAR TO DATE, FIRST 43 WEEKS | | |

WEEKLY ELECTRIC OUTPUT INDEX--TOTAL U.S.*

SEASONALLY ADJUSTED 1982 = 100

| Week Ended | 2007 | Week Ended | 2006 | Week Ended | 2005 |
|------------|------|------------|------|------------|------|
| Oct 06 | 187 | Oct 07 | 179 | Oct 08 | 189 |
| Oct 13 | 192 | Oct 14 | 172 | Oct 15 | 178 |
| Oct 20 | 186 | Oct 21 | 178 | Oct 22 | 179 |
| Oct 27 | 185 | Oct 28 | 180 | Oct 29 | 173 |

* Excludes Alaska and Hawaii

+ Includes investor-owned companies, cooperatives and government-owned utilities.

Copyright © 2007 Edison Electric Institute. All rights reserved.

WEEKLY ELECTRIC OUTPUT BY GEOGRAPHIC DIVISION (48 CONTIGUOUS STATES)

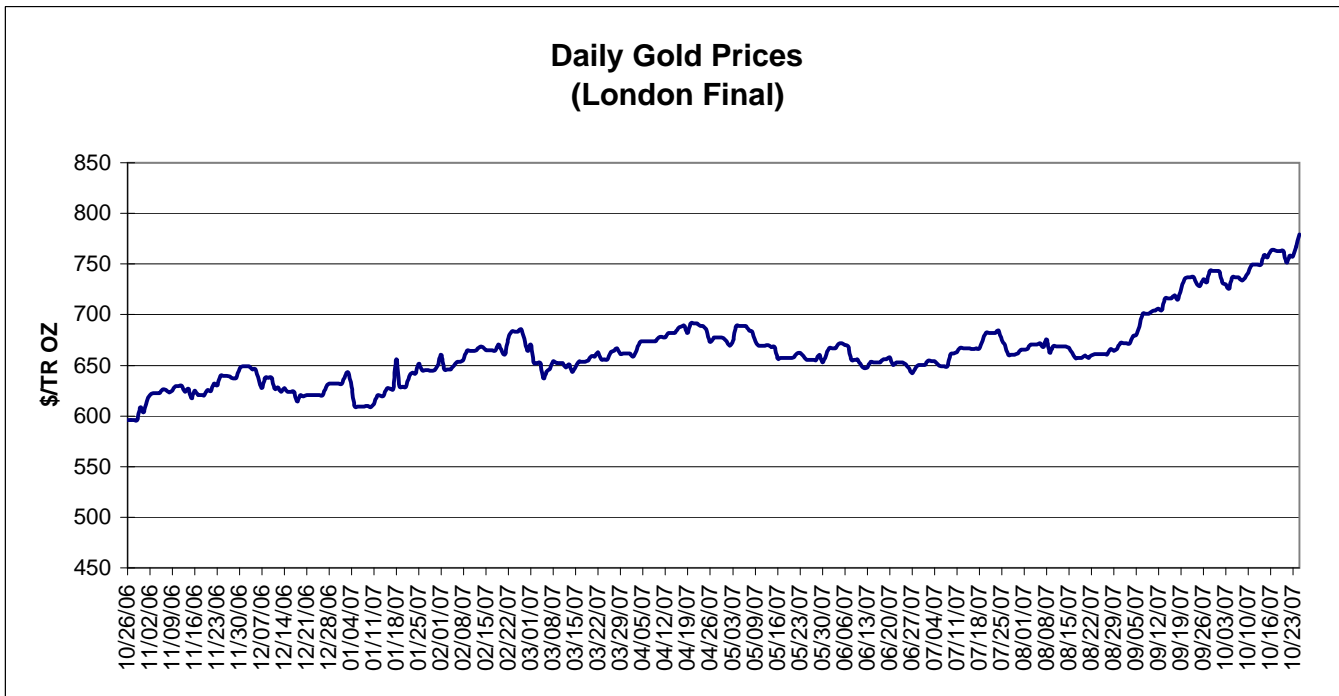
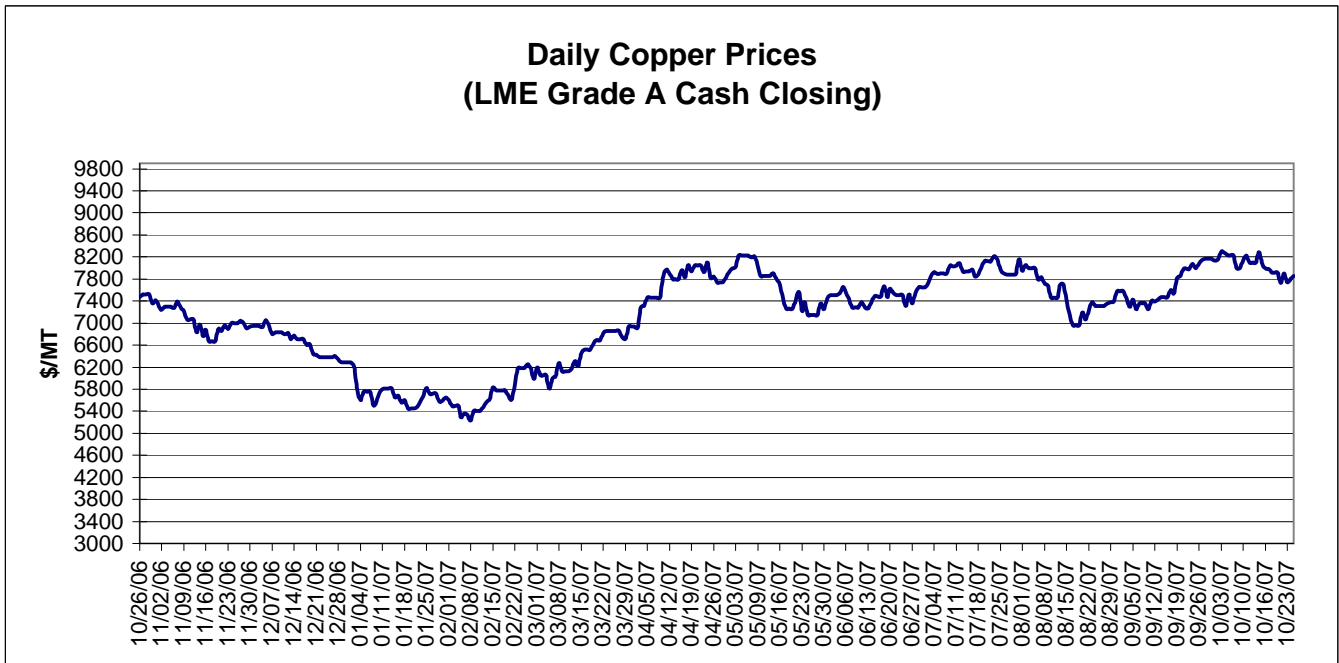
| | Week Ended | | | NMA CUMULATIVE JANUARY 1 to | | | 52 Weeks Ended | | |
|------------------------------|---------------|---------------|--|-----------------------------|-------------------------|--|------------------|------------------|--|
| | 27-Oct | 28-Oct | % Increase Over Corresponding Week of 2006 | 27-Oct | 28-Oct | % Increase Over Corresponding Week of 2006 | 27-Oct | 28-Oct | % Increase Over Corresponding Week of 2006 |
| | 2007 | 2006 | | 2007 | 2006 | | 2007 | 2006 | |
| | GWh | GWh | | GWh | GWh | | GWh | GWh | |
| | Output | Output | | Output | Output | | Output | Output | |
| New England | 2,369 | 2,382 | -0.5% | 111,414 | 109,659 | 1.6% | 133,579 | 132,643 | 0.7% |
| Mid-Atlantic | 7,923 | 7,959 | -0.5% | 381,837 | 370,250 | 3.1% | 455,338 | 446,423 | 2.0% |
| Central Industrial | 12,524 | 13,014 | -3.8% | 599,981 | 575,527 | 4.2% | 719,342 | 698,250 | 3.0% |
| West Central | 6,121 | 6,209 | -1.4% | 293,705 | 286,911 | 2.4% | 350,944 | 344,817 | 1.8% |
| Southeast | 21,142 | 20,368 | 3.8% | 924,994 | 893,926 | 3.5% | 1,103,159 | 1,074,431 | 2.7% |
| South Central | 9,621 | 9,513 | 1.1% | 506,118 | 506,730 | -0.1% | 597,758 | 598,211 | -0.1% |
| Rocky Mountain | 5,050 | 4,736 | 6.6% | 228,741 | 215,270 | 6.3% | 274,093 | 258,541 | 6.0% |
| Pacific Northwest | 3,005 | 2,903 | 3.5% | 127,638 | 121,109 | 5.4% | 157,903 | 151,586 | 4.2% |
| Pacific Southwest | <u>5,512</u> | <u>5,343</u> | 3.2% | <u>246,292</u> | <u>244,689</u> | 0.7% | <u>293,404</u> | <u>291,671</u> | 0.6% |
| Total United States * | <u>73,267</u> | <u>72,427</u> | 1.2% | <u>3,420,720</u> | <u>3,324,071</u> | 2.9% | <u>4,085,520</u> | <u>3,996,573</u> | 2.2% |

Notes: EEI output data are an estimate of electricity load made available for distribution derived as weekly net generation + purchases from non-utilities + net imports - exports - sales for resale. It is not meant to be a measure of electricity generation for the U.S. EEI survey data represent the majority of national distribution (large utilities, large government power projects, some independent and large municipal power projects). The remaining segment of the industry (smaller producers) is estimated. Non-utility generation is captured via direct sales to utilities.

* Excludes Alaska and Hawaii

** Less than one-tenth of one percent

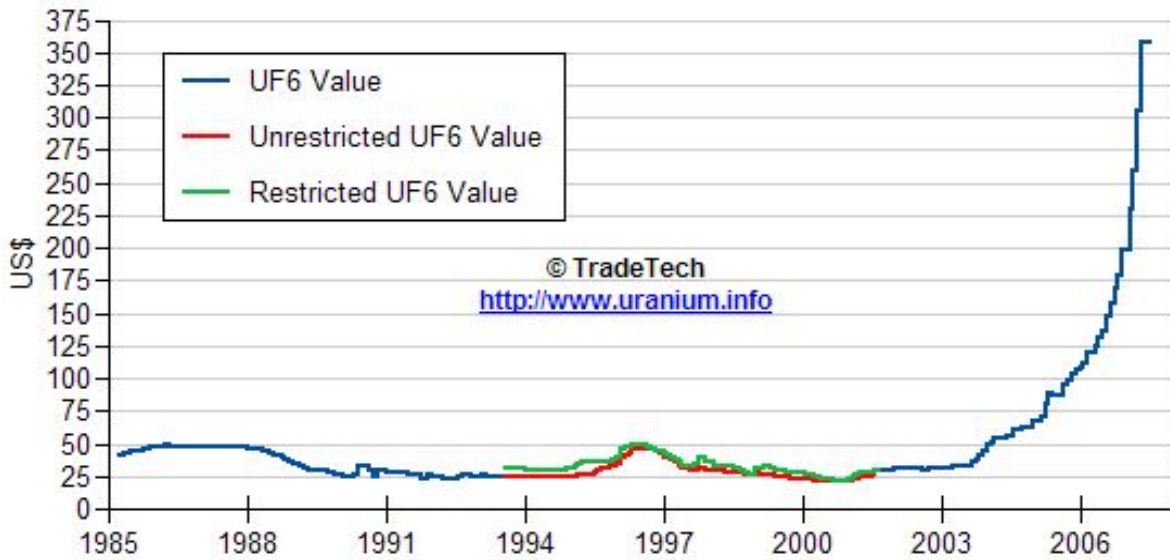
SOURCE: Edison Electric Institute (EEI), *Weekly Electric Output Report*.



Data reflect closings on weekends and holidays.

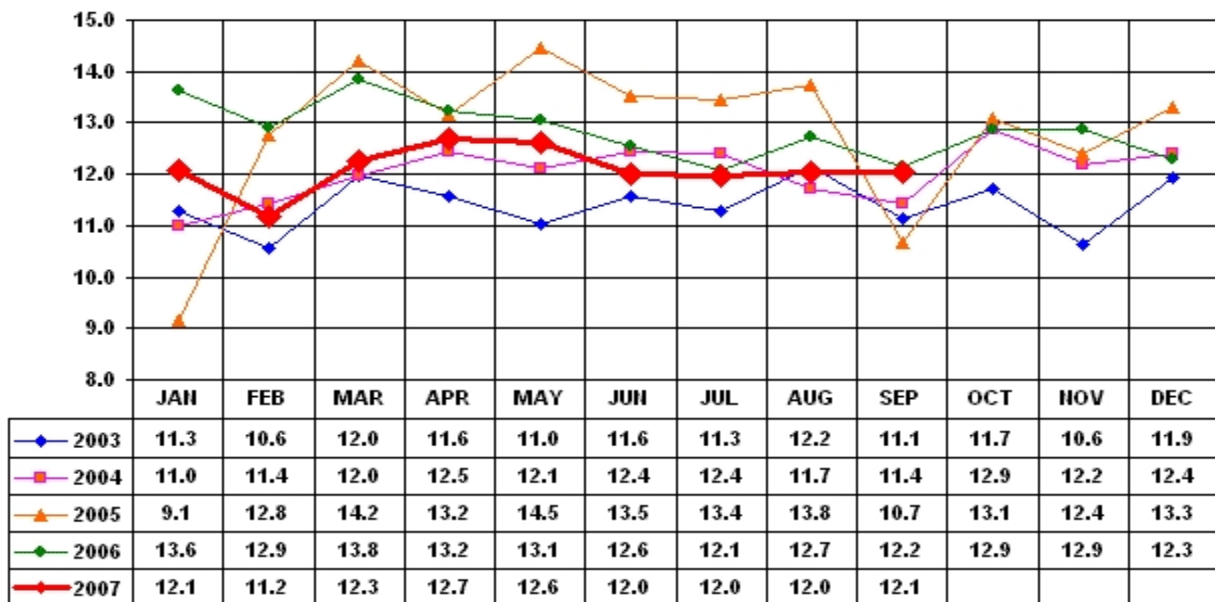
Source: Platts Metals Week

Trade Tech's Uranium (UF6) Monthly Spot Prices (US\$/kg as UF6)



Source: Trade Tech, Uranium Info Website – <http://www.uranium.info>

Coal and Coke Monthly Tonnage Indicator for Internal U.S. Waterways



Source: U.S. Army Corps of engineers, Waterborne Commerce Statistics Center