
National Mining Association

Weekly Statistical Summary

November 21, 2008 Edition
(Data for Week Ending November 15, 2008)

Prepared by
National Mining Association



Suite 500 East, 101 Constitution Avenue, NW
Washington, DC, 20001
Phone (202) 463-2600
Visit us at <http://www.nma.org>

NMA Weekly Statistical Summary

Vol. 46, No. 46
Dated 11/21/08

PRODUCTION, CONSUMPTION & TRADE						
	Week Ended			* Cumulative Jan 1 to		
	11/15/08	11/17/07	% Chng	11/15/08	11/15/07	% Chng
EIA Coal Production (000 Tons):						
Week Ended/Year to Date	22,980	22,334	2.9%	1,021,837	1,005,420	1.6%
52 Weeks Ended	1,157,538	1,145,613	1.0%			
* Due to leap year, 2008 cumulative reflects one extra day of tonnage.						
	October 08/07		% Chng	Jan - Oct 08/07		% Chng
Month Ended -- October	103,886	98,825	5.1%	974,150	956,588	1.8%
MONTH ENDED AND CUMULATIVE NUMBERS ARE PRELIMINARY AND SUBJECT TO CHANGE						
DOC Bituminous Coal Trade (000 Tons)						
	Sep 08/07		% Chng	Jan - Sep 08/07		% Chng
Exports:						
Metallurgical	4,744	2,731	73.7%	32,233	23,856	35.1%
Steam	3,850	2,139	80.0%	26,540	17,836	48.8%
Imports:	3,144	3,716	-15.4%	22,335	24,280	-8.0%
	Week Ended			* Cumulative Jan 1 to		
	11/15/08	11/17/07	% Chng	11/15/08	11/17/07	% Chng
EEl Electric Output (Mil. Kwh)	71,948	73,355	-1.9%	3,599,222	3,637,851	-1.1%
AISI Raw Steel Output (000 Tons)	1,400	2,110	-33.6%	93,402	94,680	-1.3%
EIA U.S. PETROLEUM DATA						
4-Week Averages 000 Barrels per Day						
	Week Ending			Cumulative Daily Averages		
	11/14/08	11/14/07	% Chng	2008	2007	% Chng
PETROLEUM SUPPLY:						
Domestic Crude	4,820	5,031	-4.2	4,946	5,068	-2.4
Net Imports (Incl. SPR)	9,894	9,835	0.6	9,768	10,016	-2.5
SPR Stocks W/D or Added	2	-44	--	-15	-19	--
Other Stocks W/D or added	-77	186	--	-87	26	--
Natural Gas Liquids Prod.	2,367	2,551	-7.2	2,264	2,394	-5.4



NMA

THE AMERICAN RESOURCE National Mining Association Web Site: [http:// www.nma.org](http://www.nma.org)

EIA Estimated Weekly U.S. Coal Production Overview (Thousand Short Tons)

Coal-Producing Region and State	Week Ended			Year to Date			Percent Change	52 Weeks Ended		Percent Change
	11/15/2008	11/8/2008	11/17/2007	11/15/2008	11/15/2007	11/15/2008		11/17/2007		
Alabama	399	403	381	18,138	17,157	5.7	20,425	19,213	6.3	
Alaska	26	27	29	1,231	1,158	6.3	1,391	1,337	4.1	
Arizona	155	157	139	6,708	7,097	-5.5	7,565	8,034	-5.8	
Arkansas	1	1	2	51	71	-28.0	62	77	-18.5	
Colorado	687	695	690	31,639	32,016	-1.2	35,825	36,352	-1.4	
Illinois	597	604	518	27,010	29,641	-8.9	30,110	33,499	-10.1	
Indiana	720	728	655	31,269	30,872	1.3	35,257	35,020	0.7	
Kansas	6	6	8	265	372	-28.7	312	441	-29.3	
Kentucky Total	2,211	2,236	2,188	105,070	101,877	3.1	118,254	115,201	2.7	
Eastern	1,649	1,668	1,641	79,148	77,027	2.8	89,039	87,146	2.2	
Western	562	568	547	25,922	24,850	4.3	29,215	28,055	4.1	
Louisiana	94	97	84	3,472	2,550	36.1	4,026	3,060	31.6	
Maryland	56	56	49	2,098	2,037	3.0	2,352	2,351	*	
Mississippi	0	54	35	2,667	3,193	-16.5	3,010	3,626	-17.0	
Missouri	6	6	5	203	207	-2.0	231	242	-4.4	
Montana	883	893	923	37,696	37,454	0.6	43,381	42,578	1.9	
New Mexico	611	618	485	22,483	21,466	4.7	25,365	24,619	3.0	
North Dakota	586	593	576	25,433	26,010	-2.2	28,914	29,687	-2.6	
Ohio	480	485	453	21,875	19,697	11.1	24,653	22,298	10.6	
Oklahoma	35	35	31	1,356	1,459	-7.0	1,539	1,665	-7.6	
Pennsylvania Total	1,228	1,242	1,217	57,864	57,603	0.5	65,196	65,097	0.2	
Anthracite	21	21	32	1,255	1,372	-8.5	1,445	1,552	-6.9	
Bituminous	1,207	1,221	1,185	56,609	56,231	0.7	63,751	63,546	0.3	
Tennessee	52	52	53	2,228	2,327	-4.2	2,545	2,632	-3.3	
Texas	750	758	845	33,516	36,622	-8.5	38,607	42,003	-8.1	
Utah	465	470	514	21,103	21,146	-0.2	24,153	24,314	-0.7	
Virginia	517	523	419	21,532	22,933	-6.1	23,969	26,204	-8.5	
Washington	--	--	--	--	--	--	0	48	-100.0	
West Virginia Total	3,112	3,147	2,863	141,443	135,525	4.4	158,810	152,558	4.1	
Northern	809	818	756	36,708	37,509	-2.1	41,253	42,034	-1.9	
Southern	2,303	2,330	2,108	104,735	98,015	6.9	117,557	110,524	6.4	
Wyoming	9,305	9,074	9,171	405,485	394,928	2.7	461,585	453,458	1.8	
Appalachian Total	7,491	7,578	7,077	344,326	334,306	3.0	386,989	377,500	2.5	
Interior Total	2,770	2,858	2,729	125,733	129,838	-3.2	142,369	147,687	-3.6	
Western Total	12,718	12,527	12,528	551,778	541,276	1.9	628,179	620,427	1.2	
East of Miss. River	9,371	9,532	8,832	431,195	422,863	2.0	484,580	477,699	1.4	
West of Miss. River	13,609	13,430	13,502	590,642	582,558	1.4	672,958	667,914	0.8	
Bituminous and Lignite	22,959	22,941	22,301	1,020,582	1,004,048	1.6	1,156,093	1,144,061	1.1	
Anthracite	21	21	32	1,255	1,372	-8.5	1,445	1,552	-6.9	
U.S. Total	22,980	22,962	22,334	1,021,837	1,005,420	1.6	1,157,538	1,145,613	1.0	
Railroad Cars Loaded	152,812	154,103	148,094	6,795,510	6,562,953	3.5	7,636,589	7,409,377	3.1	

Source: Energy Information Administration



WEEKLY ELECTRIC OUTPUT

Essential Energy Information from EEI's Statistics Department

Volume 76 No. 46

OUTPUT FOR WEEK ENDED - Nov 15, 2008

Nov 19, 2008

The net available amount of electric energy distributed by the Total Electric Utility Industry* for the week ended Saturday, **Nov 15, 2008** was **71,948** gigawatthours (GWh), according to the Edison Electric Institute. This is equivalent to **180** on the weekly electric output index.

WEEKLY ELECTRIC OUTPUT BY GEOGRAPHIC DIVISION

(48 CONTIGUOUS STATES)

	Week Ended November 15		52 Weeks Ended November 15	
	GWh Output	% Increase Over Corresponding Week of 2007	GWh Output	% Increase Over Corresponding Period of 2007
New England	2,333	-5.2	131,359	-1.8
Mid-Atlantic	7,949	-3.8	450,956	-1.1
Central Industrial	13,039	0.5	707,724	-1.6
West Central	6,295	1.2	345,493	-1.5
Southeast	19,523	-1.8	1,088,533	-1.4
South Central	9,444	-4.7	602,479	0.8
Rocky Mountain	5,091	-2.5	276,796	0.6
Pacific Northwest	3,124	-2.9	167,619	6.0
Pacific Southwest	5,150	-1.2	291,025	-0.7
Total United States	71,948	-1.9	4,061,984	-0.6

WEEKLY ELECTRIC OUTPUT IN PREVIOUS WEEKS--GWh

Week Ended	2008	Week Ended	2007	% Inc. (08/07)	52 Weeks Ended	2008	% Inc. (08/07)
Oct 25	72,073	Oct 27	73,267	-1.6	Oct 25	4,066,283	-0.5
Nov 01	70,879	Nov 03	70,822	0.1	Nov 01	4,066,340	-0.4
Nov 08	70,004	Nov 10	72,953	-4.0	Nov 08	4,063,390	-0.6
Nov 15	71,948	Nov 17	73,355	-1.9	Nov 15	4,061,984	-0.6
Nov 15	3,599,222	Nov 17	3,637,851	-1.1	YEAR TO DATE, FIRST 46 WEEKS		

WEEKLY ELECTRIC OUTPUT INDEX--TOTAL U.S.*

SEASONALLY ADJUSTED 1982 = 100

Week Ended	2008	Week Ended	2007	Week Ended	2006
Oct 25	183	Oct 27	185	Oct 28	180
Nov 01	179	Nov 03	177	Nov 04	176
Nov 08	177	Nov 10	185	Nov 11	182
Nov 15	180	Nov 17	184	Nov 18	181

* Excludes Alaska and Hawaii

+ Includes investor-owned companies, cooperatives and government-owned utilities.

Copyright © 2008 Edison Electric Institute. All rights reserved.

WEEKLY ELECTRIC OUTPUT BY GEOGRAPHIC DIVISION (48 CONTIGUOUS STATES)

	Week Ended			NMA CUMULATIVE JANUARY WEEK ONE TO			52 Weeks Ended		
	15-Nov 2008 GWh Output	17-Nov 2007 GWh Output	% Increase Over Corresponding Week of 2007	15-Nov 2008 GWh Output	17-Nov 2007 GWh Output	% Increase Over Corresponding Week of 2007	15-Nov 2008 GWh Output	17-Nov 2007 GWh Output	% Increase Over Corresponding Week of 2007
New England	2,333	2,461	-5.2%	115,588	118,675	-2.6%	131,359	133,702	-1.8%
Mid-Atlantic	7,949	8,261	-3.8%	398,449	406,157	-1.9%	450,956	455,923	-1.1%
Central Industrial	13,039	12,980	0.5%	624,204	638,618	-2.3%	707,724	718,992	-1.6%
West Central	6,295	6,217	1.3%	305,333	312,054	-2.2%	345,493	350,837	-1.5%
Southeast	19,523	19,875	-1.8%	965,610	983,736	-1.8%	1,088,533	1,104,171	-1.4%
South Central	9,444	9,915	-4.8%	539,722	535,380	0.8%	602,479	597,555	0.8%
Rocky Mountain	5,091	5,219	-2.5%	244,070	244,704	-0.3%	276,796	275,122	0.6%
Pacific Northwest	3,124	3,216	-2.9%	145,583	137,044	6.2%	167,619	158,065	6.0%
Pacific Southwest	5,150	5,211	-1.2%	260,666	261,482	-0.3%	291,025	292,990	-0.7%
Total United States *	71,948	73,355	-1.9%	3,599,225	3,637,850	-1.1%	4,061,984	4,087,357	-0.6%

Notes: EEI output data are an estimate of electricity load made available for distribution derived as weekly net generation + purchases from non-utilities + net imports - exports - sales for resale. It is not meant to be a measure of electricity generation for the U.S. EEI survey data represent the majority of national distribution (large utilities, large government power projects, some independent and large municipal power projects). The remaining segment of the industry (smaller producers) is estimated. Non-utility generation is captured via direct sales to utilities.

* Excludes Alaska and Hawaii

** Less than one-tenth of one percent

SOURCE: Edison Electric Institute (EEI), *Weekly Electric Output Report*.

AMERICAN IRON AND STEEL INSTITUTE
 1140 Connecticut Avenue, Suite 705
 Washington, D.C. 20036

November 17, 2008

ESTIMATED WEEKLY RAW STEEL* PRODUCTION

Period	Thousand Net Tons	Percent Change from Previous Period	Percent Capability Utilization**	Production by District	
				Nov. 15	Nov. 8
Week Ending					
November 15, 2008	1,400	-10.1	58.7	108	147
November 15, 2007	2,110	-33.7	88.5	148	157
November 8, 2008	1,556	-3.1	65.2	45	44
				63	75
				375	366
				203	220
				396	480
				62	67
				1,400	1,556
Year-to-Date+					
November 15, 2008	93,402	-1.4	85.6		
November 15, 2007	94,680	-	86.6		

*Raw steel production tonnage included in this report is estimated based on a sampling of steel producers. Therefore, this report should be used primarily to assess production trends. The AISI production report "AIS 7," produced monthly and available by subscription, provides a more accurate summary of steel production based on data supplied by companies representing approximately 75% of U.S. production capacity.

+ Includes revisions for previous months

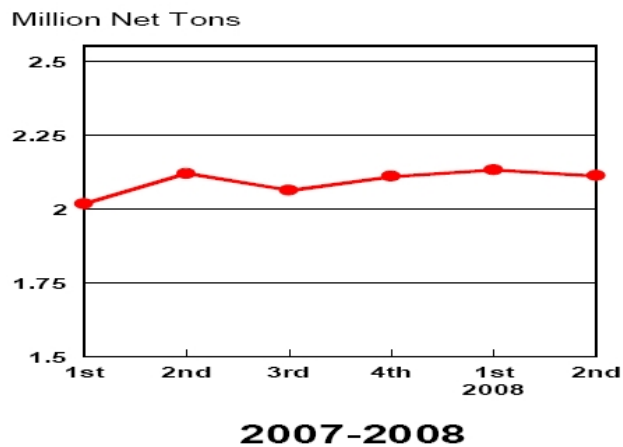
NOTE: Capability for the Third Quarter 2008 is approximately 31.4 million net tons vs 30.1 million net tons for the same period last year, and 31.0 million tons for the second quarter of 2008.

Capability -	2004 approx.	2.2 million tons/week
	2005	2.3
	2006	2.4
	2007	2.4
	2008	2.4

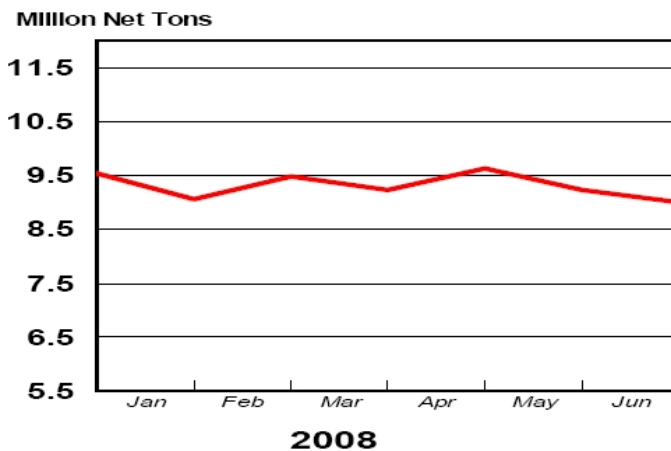
*Steel in the first solid state after melting suitable for further processing or sale, including ingots, steel for castings and strand or pressure cast blooms, slabs, or other product forms.

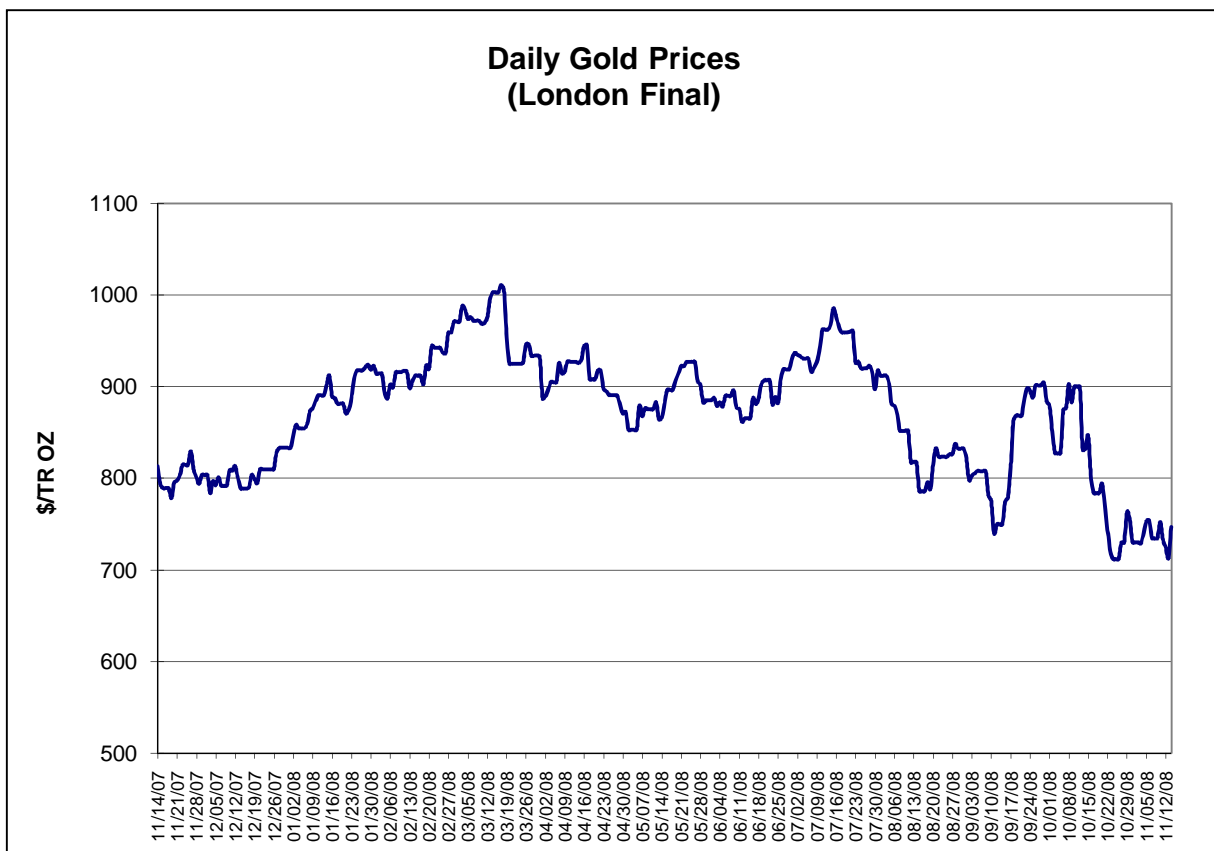
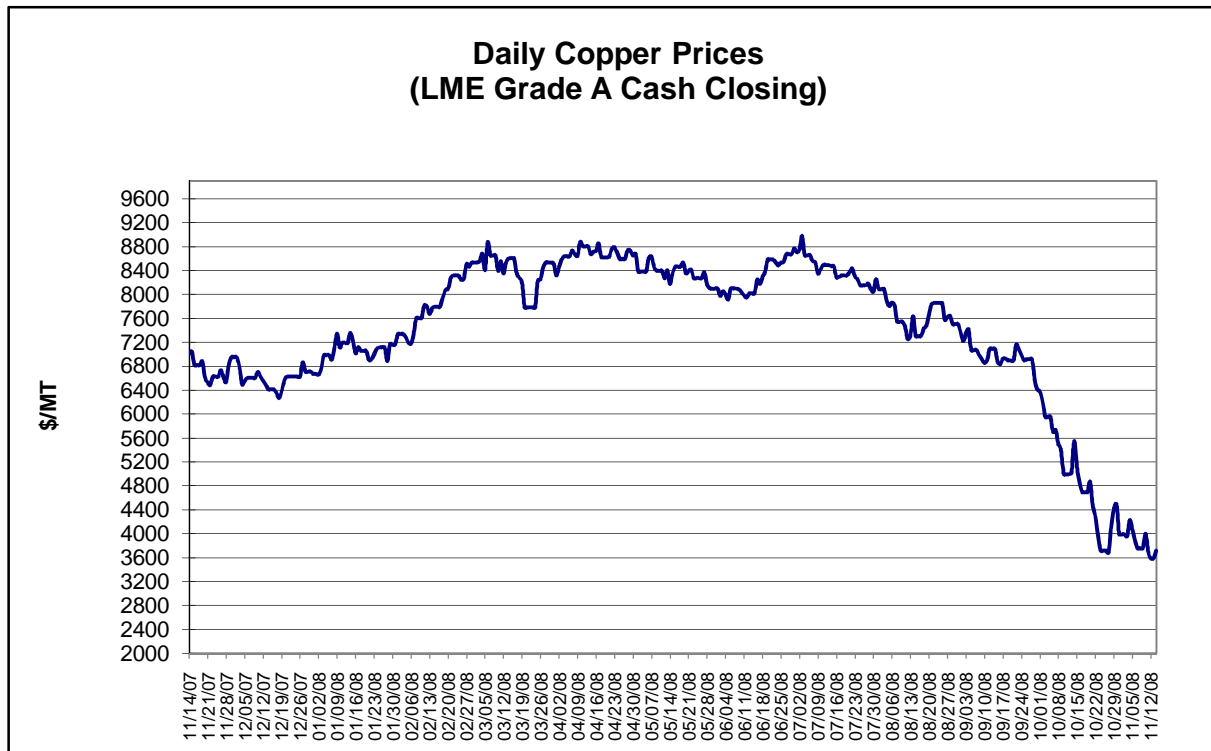
** Based on tonnage capability to produce raw steel for a sustained full order book.

Average Weekly Raw Steel Production



Monthly Raw Steel Production

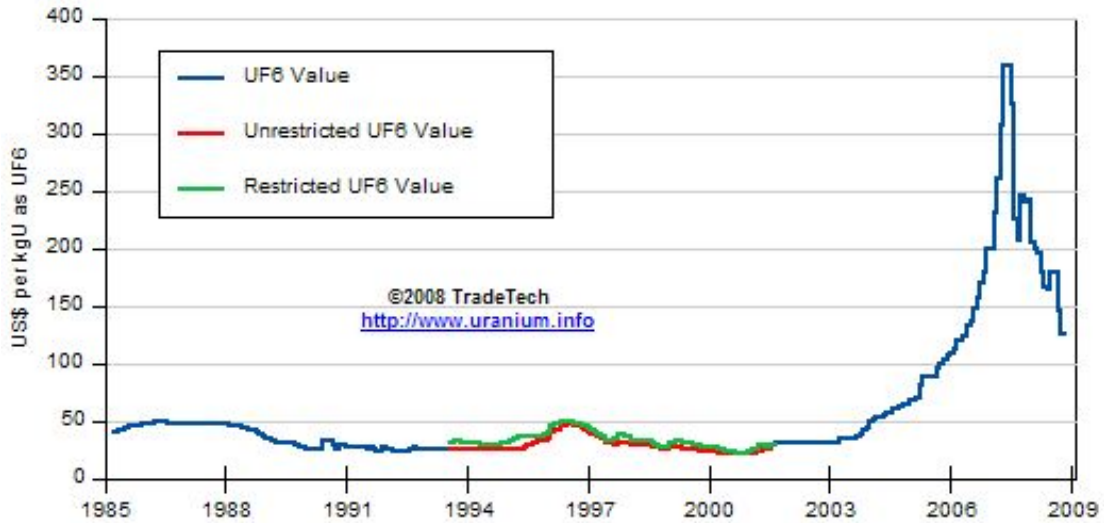




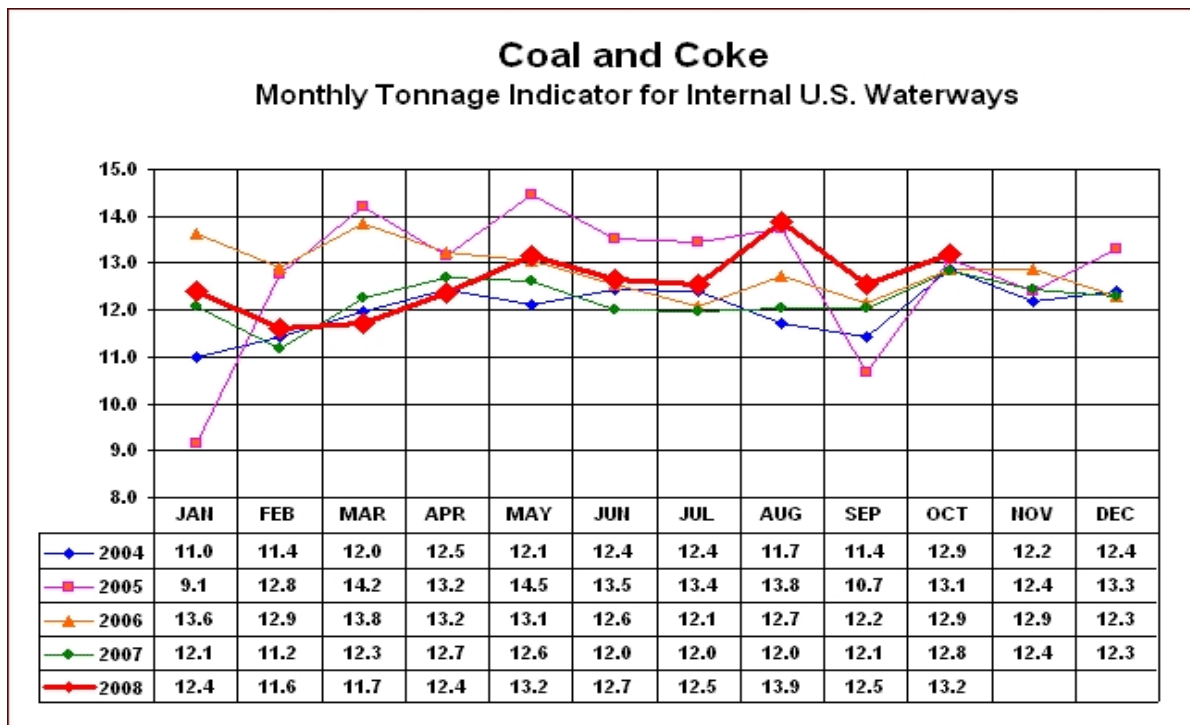
Data reflect closings on weekends and holidays.

Source: Platts Metals Week

Trade Tech's Uranium (UF6) Monthly Spot Prices (US\$/kg as UF6)



Source: Trade Tech, Uranium Info Website – <http://www.uranium.info>

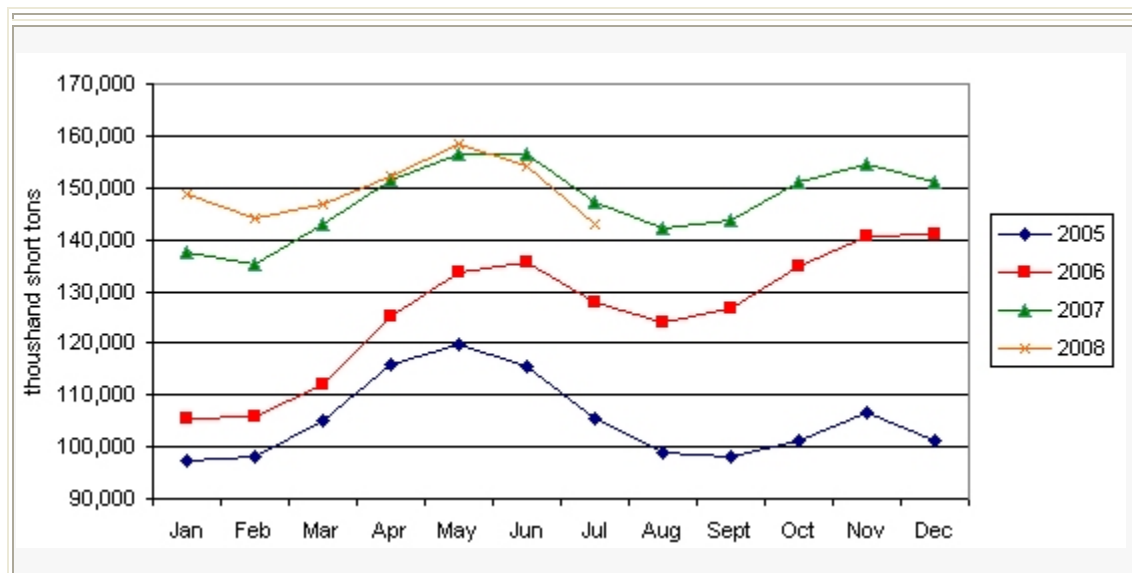


Source: U.S. Army Corps of Engineers, Waterborne Commerce Statistics Center

Average Weekly Coal Commodity Spot Prices (Dollars per Short Ton)					
Week Ended	Central Appalachia 12,500 Btu, 1.2 SO2	Northern Appalachia 13,000 Btu, <3.0 SO2	Illinois Basin 11,800 Btu, 5.0 SO2	Powder River Basin 8,800 Btu, 0.8 SO2	Uinta Basin 11,700 Btu, 0.8 SO2
03-Oct-08	\$133.00	\$143.00	\$84.00	\$14.50	\$61.00
10-Oct-08	\$133.00	\$138.00	\$84.00	\$14.50	\$61.00
17-Oct-08	\$133.00	\$138.00	\$84.00	\$14.50	\$61.00
24-Oct-08	\$119.25	\$123.00	\$84.00	\$14.50	\$61.00
31-Oct-08	\$119.25	\$111.50	\$84.00	\$14.50	\$73.00
07-Nov-08	\$119.25	\$111.50	\$84.00	\$14.50	\$73.00
14-Nov-08	\$111.15	\$111.50	\$84.00	\$14.50	\$73.00

Source: Energy Information Administration (from Platts *Coal Outlook*, "Weekly Price Survey")

EIA Electric Power Sector Coal Stocks



Source: Energy Information Administration

USGS Production of Selected Mineral Commodities	2008 Year to Date - 2nd Quarter	2007 Year to Date - 2nd Quarter	Percent Change
Aluminum, secondary (000 Mt.)	445.0	477.0	-7%
Cement (Mil. Mt.)	41.1	43.7	-6%
Gypsum (Mil. Mt.)	9.4	10.9	-14%
Iron Ore (Mil. Mt.)	26.8	25.1	7%
Phosphate rock (Mil. Mt.)	15.3	14.7	4%
Sand & gravel, construction (Mil. Mt.)	477.0	533.0	-11%
Soda ash (Mil. Mt.)	5.6	5.5	2%
Stone, crushed (Mil. Mt.)	664.0	730.0	-9%
Zinc (000 Mt.)	420.0	365.0	15%

Source: U.S. Geological Survey, Mineral Industry Surveys, *U.S. Production of Selected Mineral Commodities in the Second Quarter 2008*, August 2008