
National Mining Association

Weekly Statistical Summary

November 23, 2007 Edition
(Data for Week Ending November 17, 2007)

Prepared by
National Mining Association



Suite 500 East, 101 Constitution Avenue, NW
Washington, DC, 20001
Phone (202) 463-2600
Visit us at <http://www.nma.org>

NMA Weekly Statistical Summary

Vol. 45, No. 46
Dated 11/23/07

PRODUCTION, CONSUMPTION & TRADE						
	Week Ended			Cumulative Jan 1 to		
	11/17/07	11/18/06	% Chng	11/17/07	11/18/06	% Chng
EIA Coal Production (000 Tons):						
Week Ended/Year to Date	22,638	22,737	-0.4%	1,013,240	1,026,349	-1.3%
52 Weeks Ended	1,147,919	1,155,219	-0.6%			
Month Ended -- October						
	October 07/06		% Chng	Jan - Oct 07/06		% Chng
	100,234	98,808	1.4%	958,146	970,161	-1.2%
MONTH ENDED AND CUMULATIVE NUMBERS ARE PRELIMINARY AND SUBJECT TO CHANGE						
DOC Bituminous Coal Trade (000 Tons)						
Exports:						
	September 07/06		% Chng	Jan - Sep 07/06		% Chng
Metallurgical	2,731	2,488	9.8%	23,856	20,499	16.4%
Steam	2,139	2,595	-17.6%	17,836	16,054	11.1%
Imports:						
	3,470	3,370	3.0%	27,750	27,313	1.6%
Week Ended						
	11/17/07	11/18/06	% Chng	Cumulative Jan 1 to		
				11/17/07	11/18/06	% Chng
EEl Electric Output (Mil. Kwh)	73,355	72,042	1.8%	3,637,851	3,539,362	2.8%
AISI Raw Steel Output (000 Tons)	2,054	1,887	8.9%	94,162	97,569	-3.5%
EIA U.S. PETROLEUM DATA						
4-Week Averages 000 Barrels per Day						
Week Ending						
	11/16/07	10/16/06	% Chng	Cumulative Daily Averages		
				2007	2006	% Chng
PETROLEUM SUPPLY:						
Domestic Crude	5,079	5,106	-0.5	5,134	5,096	0.7
Net Imports (Incl. SPR)	9,811	9,959	-1.5	9,975	10,150	-1.7
SPR Stocks W/D or Added	-33	-12	--	-20	-13	--
Other Stocks W/D or added	106	-13	--	8	-41	--
Natural Gas Liquids Prod.	2,425	2,414	0.5	2,381	2,212	7.6



NMA
THE AMERICAN RESOURCE

National Mining Association Web Site: [http:// www.nma.org](http://www.nma.org)

EIA Estimated Weekly U.S. Coal Production Overview (Thousand Short Tons)

Coal-Producing Region and State	Week Ended			Year to Date			52 Weeks Ended		
	11/17/2007	11/10/2007	11/18/2006	11/17/2007	11/17/2006	Percent Change	11/17/2007	11/18/2006	Percent Change
Alabama	365	382	356	17,308	17,042	1.6	19,286	19,177	0.6
Alaska	28	30	31	1,334	1,252	6.5	1,507	1,394	8.1
Arizona	130	136	163	6,949	7,307	-4.9	7,858	8,524	-7.8
Arkansas	1	2	1	54	18	197.6	58	18	219.7
Colorado	703	736	726	32,692	32,091	1.9	36,846	35,964	2.5
Illinois	653	683	658	30,957	28,961	6.9	34,698	32,345	7.3
Indiana	688	719	707	31,522	31,091	1.4	35,527	35,095	1.2
Kansas	10	10	11	401	359	11.7	468	379	23.4
Kentucky Total	2,267	2,372	2,271	103,216	108,219	-4.6	116,072	121,441	-4.4
Eastern	1,667	1,744	1,728	77,616	84,054	-7.7	87,392	94,356	-7.4
Western	600	628	543	25,600	24,166	5.9	28,681	27,085	5.9
Louisiana	85	72	114	2,651	3,614	-26.6	3,139	4,172	-24.8
Maryland	72	75	54	3,005	4,750	-36.7	3,309	5,317	-37.8
Mississippi	39	80	63	3,254	3,368	-3.4	3,677	3,729	-1.4
Missouri	4	5	6	227	361	-37.1	260	437	-40.4
Montana	829	868	848	35,847	36,848	-2.7	40,720	41,351	-1.5
New Mexico	482	504	540	22,667	22,851	-0.8	25,718	26,160	-1.7
North Dakota	570	596	631	25,016	26,850	-6.8	28,577	30,277	-5.6
Ohio	434	454	444	19,727	20,206	-2.4	22,228	23,015	-3.4
Oklahoma	37	39	36	1,610	1,798	-10.4	1,810	2,015	-10.1
Pennsylvania Total	1,230	1,286	1,278	58,037	58,918	-1.5	65,276	66,609	-2.0
Anthracite	33	35	30	1,360	1,364	-0.4	1,533	1,564	-2.0
Bituminous	1,196	1,251	1,249	56,678	57,554	-1.5	63,744	65,044	-2.0
Tennessee	49	52	53	2,400	2,510	-4.4	2,695	2,870	-6.1
Texas	852	892	896	37,691	40,285	-6.4	42,837	45,836	-6.5
Utah	460	481	540	21,507	22,947	-6.3	24,565	25,803	-4.8
Virginia	544	569	565	25,395	26,673	-4.8	28,574	29,543	-3.3
Washington	0	0	53	0	2,532	-100.0	48	3,136	-98.5
West Virginia Total	2,910	3,044	2,897	136,228	135,874	0.3	152,632	152,684	*
Northern	882	922	771	40,503	38,016	6.5	44,863	42,809	4.8
Southern	2,028	2,121	2,125	95,725	97,858	-2.2	107,769	109,875	-1.9
Wyoming	9,195	9,171	8,795	393,544	389,625	1.0	449,533	437,931	2.6
Appalachian Total	7,271	7,606	7,375	339,717	350,025	-2.9	381,391	393,570	-3.1
Interior Total	2,970	3,130	3,034	133,967	134,021	*	151,156	151,110	*
Western Total	12,398	12,522	12,328	539,555	542,303	-0.5	615,371	610,539	0.8
East of Miss. River	9,250	9,717	9,346	431,050	437,611	-1.5	483,974	491,822	-1.6
West of Miss. River	13,388	13,541	13,391	582,189	588,738	-1.1	663,945	663,396	0.1
Bituminous and Lignite	22,605	23,223	22,707	1,011,880	1,024,985	-1.3	1,146,386	1,153,654	-0.6
Anthracite	33	35	30	1,360	1,364	-0.4	1,533	1,564	-2.0
U.S. Total	22,638	23,258	22,737	1,013,240	1,026,349	-1.3	1,147,919	1,155,219	-0.6
Railroad Cars Loaded	148,094	153,021	147,571	6,562,953	6,608,933	-0.7	7,409,377	7,407,624	*

Source: Energy Information Administration



Volume 75 No. 46

OUTPUT FOR WEEK ENDED - Nov 17, 2007

Nov 21, 2007

The net available amount of electric energy distributed by the Total Electric Utility Industry+ for the week ended Saturday, **Nov 17, 2007** was **73,355** gigawatthours (GWh), according to the Edison Electric Institute. This is equivalent to **184** on the weekly electric output index.

WEEKLY ELECTRIC OUTPUT BY GEOGRAPHIC DIVISION
(48 CONTIGUOUS STATES)

	Week Ended November 17		52 Weeks Ended November 17	
	GWh Output	% Increase Over Corresponding Week of 2006	GWh Output	% Increase Over Corresponding Period of 2006
New England	2,461	3.9	133,702	0.8
Mid-Atlantic	8,261	4.7	455,923	2.1
Central Industrial	12,980	-1.4	718,992	2.8
West Central	6,217	-1.9	350,837	1.7
Southeast	19,875	2.5	1,104,171	2.6
South Central	9,915	3.2	597,555	-0.1
Rocky Mountain	5,219	5.2	275,122	6.2
Pacific Northwest	3,216	0.1	158,065	4.1
Pacific Southwest	5,211	1.7	292,990	0.5
Total United States	73,355	1.8	4,087,357	2.2

WEEKLY ELECTRIC OUTPUT IN PREVIOUS WEEKS--GWh

Week Ended	2007	Week Ended	2006	% Inc. (07/06)	52 Weeks Ended	2007	% Inc. (07/06)
Oct 27	73,267	Oct 28	72,427	1.2	Oct 27	4,085,520	2.2
Nov 03	70,822	Nov 04	71,648	-1.2	Nov 03	4,084,694	2.2
Nov 10	72,953	Nov 11	71,604	1.9	Nov 10	4,086,044	2.2
Nov 17	73,355	Nov 18	72,042	1.8	Nov 17	4,087,357	2.2
Nov 17	3,637,851	Nov 18	3,539,362	2.8	YEAR TO DATE, FIRST 46 WEEKS		

WEEKLY ELECTRIC OUTPUT INDEX--TOTAL U.S.*
SEASONALLY ADJUSTED 1982 = 100

Week Ended	2007	Week Ended	2006	Week Ended	2005
Oct 27	185	Oct 28	180	Oct 29	173
Nov 03	177	Nov 04	176	Nov 05	176
Nov 10	185	Nov 11	182	Nov 12	175
Nov 17	184	Nov 18	181	Nov 19	179

* Excludes Alaska and Hawaii

+ Includes investor-owned companies, cooperatives and government-owned utilities.

Copyright © 2007 Edison Electric Institute. All rights reserved.

WEEKLY ELECTRIC OUTPUT BY GEOGRAPHIC DIVISION (48 CONTIGUOUS STATES)

	Week Ended			NMA CUMULATIVE JANUARY 1 to			52 Weeks Ended		
	17-Nov 2007	18-Nov 2006	% Increase Over Corresponding Week of 2006	17-Nov 2007	18-Nov 2006	% Increase Over Corresponding Week of 2006	17-Nov 2007	18-Nov 2006	% Increase Over Corresponding Week of 2006
	GWh Output	GWh Output		GWh Output	GWh Output		GWh Output	GWh Output	
New England	2,461	2,368	3.9%	118,675	116,797	1.6%	133,702	132,603	0.8%
Mid-Atlantic	8,261	7,889	4.7%	406,157	393,986	3.1%	455,923	446,531	2.1%
Central Industrial	12,980	13,160	-1.4%	638,618	614,513	3.9%	718,992	699,351	2.8%
West Central	6,217	6,338	-1.9%	312,054	305,368	2.2%	350,837	344,947	1.7%
Southeast	19,875	19,384	2.5%	983,736	951,657	3.4%	1,104,171	1,075,709	2.6%
South Central	9,915	9,607	3.2%	535,380	536,194	-0.2%	597,555	597,944	-0.1%
Rocky Mountain	5,219	4,960	5.2%	244,704	230,205	6.3%	275,122	259,112	6.2%
Pacific Northwest	3,216	3,213	0.1%	137,044	130,352	5.1%	158,065	151,770	4.1%
Pacific Southwest	<u>5,211</u>	<u>5,123</u>	1.7%	<u>261,482</u>	<u>260,293</u>	0.5%	<u>292,990</u>	<u>291,630</u>	0.5%
Total United States *	73,355	72,042	1.8%	3,637,850	3,539,365	2.8%	4,087,357	3,999,597	2.2%

Notes: EEI output data are an estimate of electricity load made available for distribution derived as weekly net generation + purchases from non-utilities + net imports - exports - sales for resale. It is not meant to be a measure of electricity generation for the U.S. EEI survey data represent the majority of national distribution (large utilities, large government power projects, some independent and large municipal power projects). The remaining segment of the industry (smaller producers) is estimated. Non-utility generation is captured via direct sales to utilities.

* Excludes Alaska and Hawaii

** Less than one-tenth of one percent

SOURCE: Edison Electric Institute (EEI), *Weekly Electric Output Report*.

AMERICAN IRON AND STEEL INSTITUTE
 1140 Connecticut Avenue, Suite 705
 Washington, D.C. 20036

November 19, 2007

ESTIMATED WEEKLY RAW STEEL* PRODUCTION

<u>Period</u>	<u>Thousand Net Tons</u>	<u>Percent Change from Previous Period</u>	<u>Percent Capability Utilization**</u>	<u>Production by District</u>	
				<u>Week Ending</u>	
				<u>Nov 17</u>	<u>Nov 10</u>
<u>Week Ending</u>					
				North East Coast	122 116
				Pgh/Youngstown	194 200
				Lake Erie	102 100
				Detroit	117 140
				Indiana/Chicago	563 561
				Midwest	230 238
				Southern	636 682
				Western	<u>90</u> <u>93</u>
				Total	2054 2130
<u>Year-to-Date+</u>					
Nov. 17, 2007	2,054	-3.5	86.1		
Nov. 17, 2006	1,887	8.8	81.5		
Nov. 10, 2007	2,130	1.4	89.3		
Nov. 17, 2007	94,162	-3.4	86.1		
Nov. 17, 2006	97,569	-	89.0		

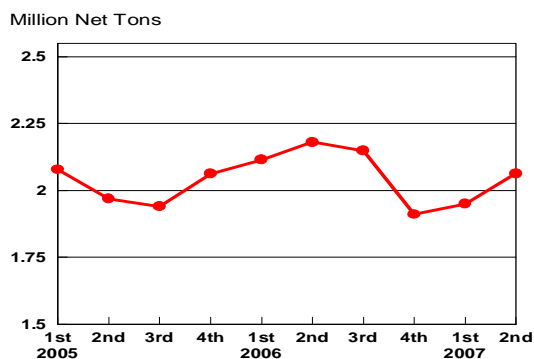
*Raw steel production tonnage included in this report is estimated based on a sampling of steel producers. Therefore, this report should be used primarily to assess production trends. The AISI production report "AIS 7," produced monthly and available by subscription, provides a more accurate summary of steel production based on data supplied by companies representing approximately 75% of U.S. production capacity.

+Includes revisions for previous months

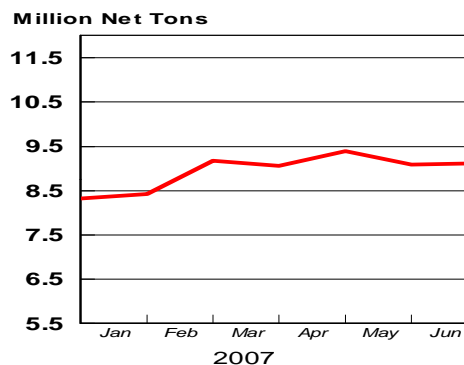
NOTE: Capability for the Fourth Quarter 2007 is approximately 31.3 million net tons vs 30.7 million net tons for the same period last year, and 30.1 million tons for the third quarter of 2007.

Capability -	2003 approx.	2004	2005	2006	2007
	2.3 million tons/week	2.2	2.3	2.4	2.4

Average Weekly Raw Steel Production

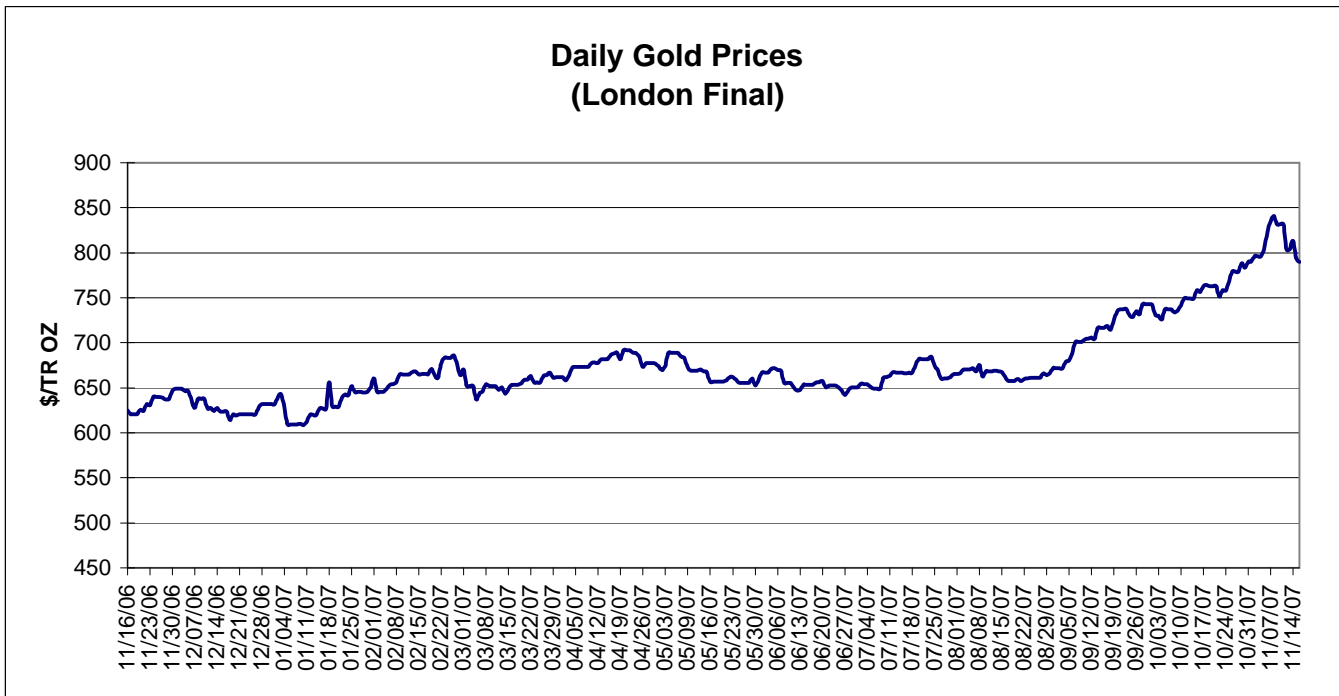
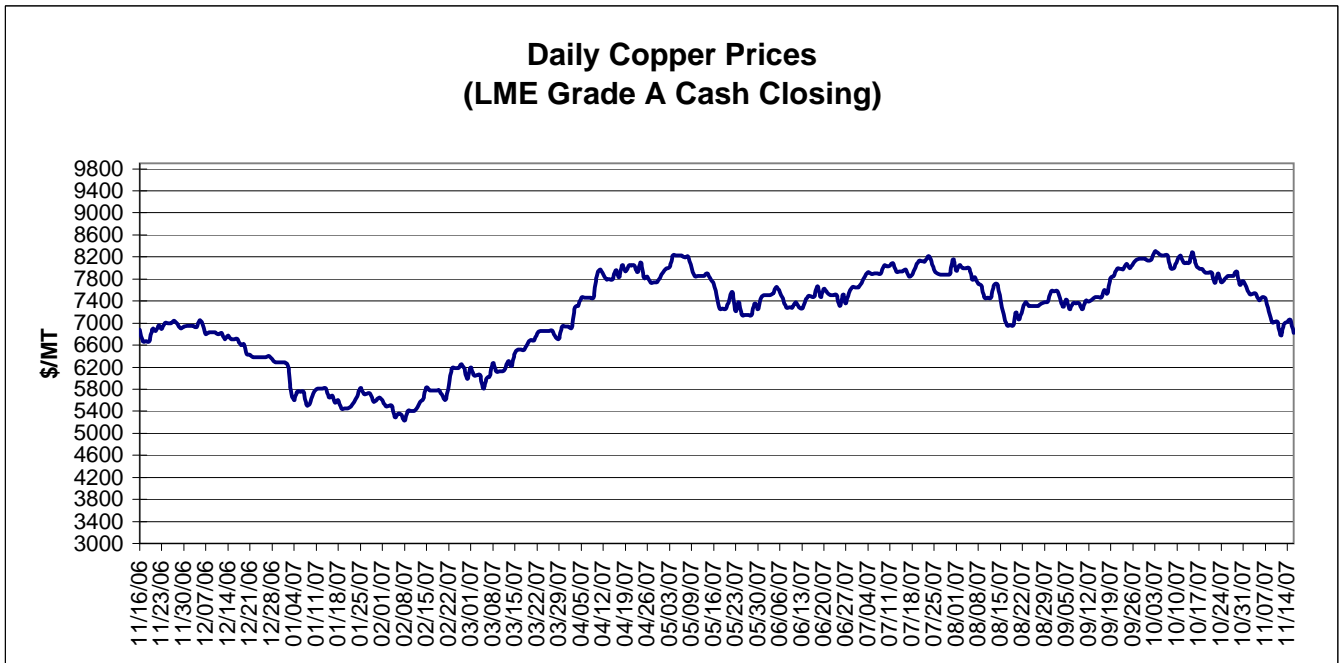


MONTHLY RAW STEEL PRODUCTION



*Steel in the first solid state after melting suitable for further processing or sale, including ingots, steel for castings and strand or pressure cast blooms, slabs, or other product forms.

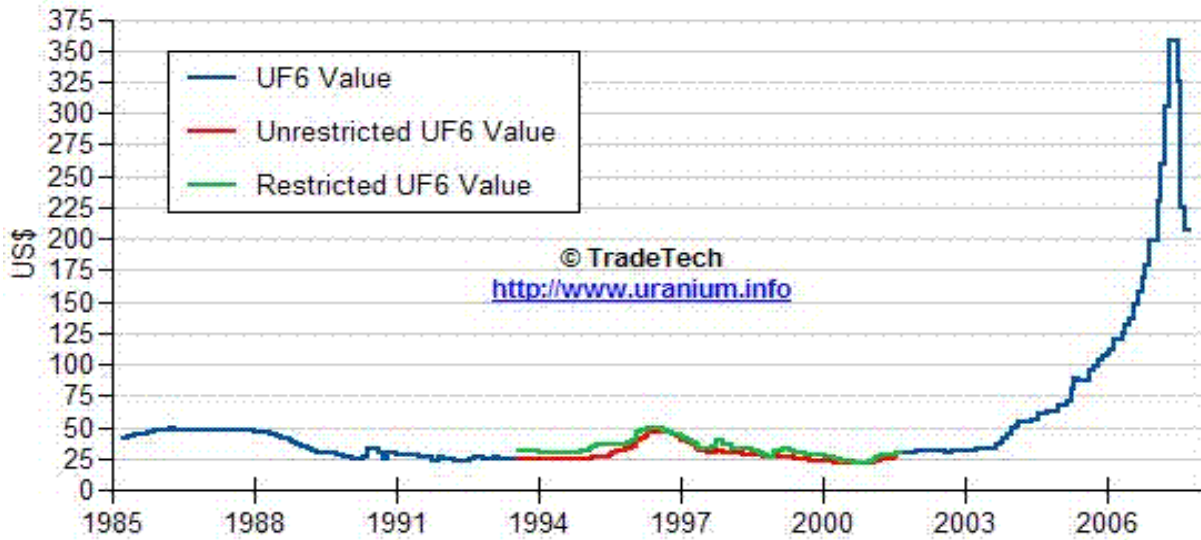
** Based on tonnage capability to produce raw steel for a sustained full order book.



Data reflect closings on weekends and holidays.

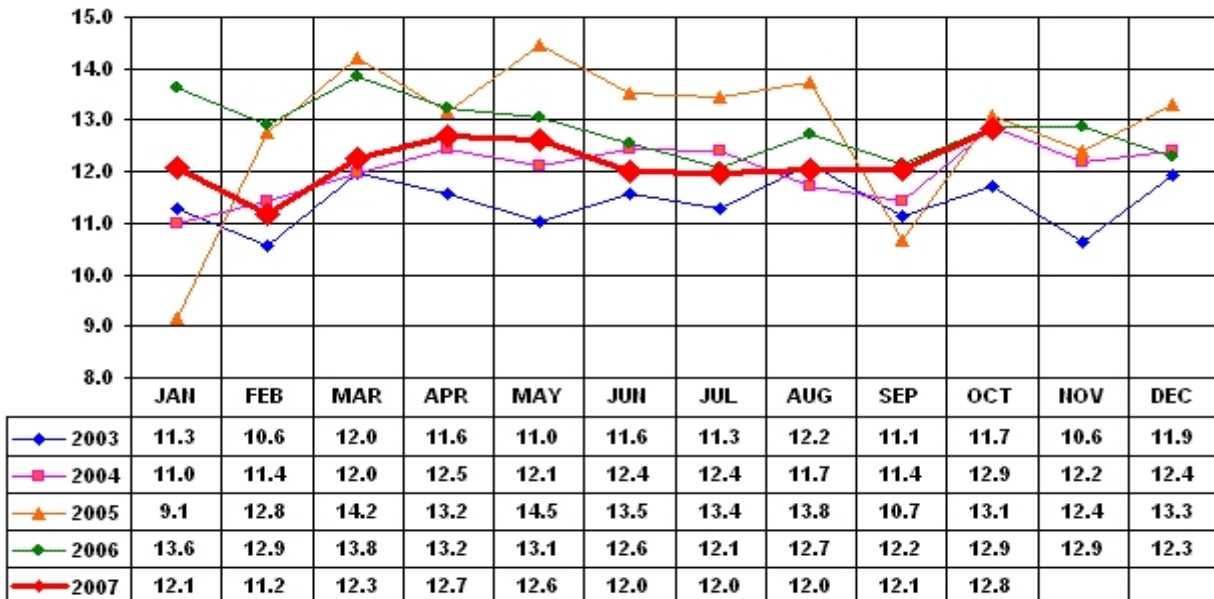
Source: Platts Metals Week

Trade Tech's Uranium (UF6) Monthly Spot Prices (US\$/kg as UF6)



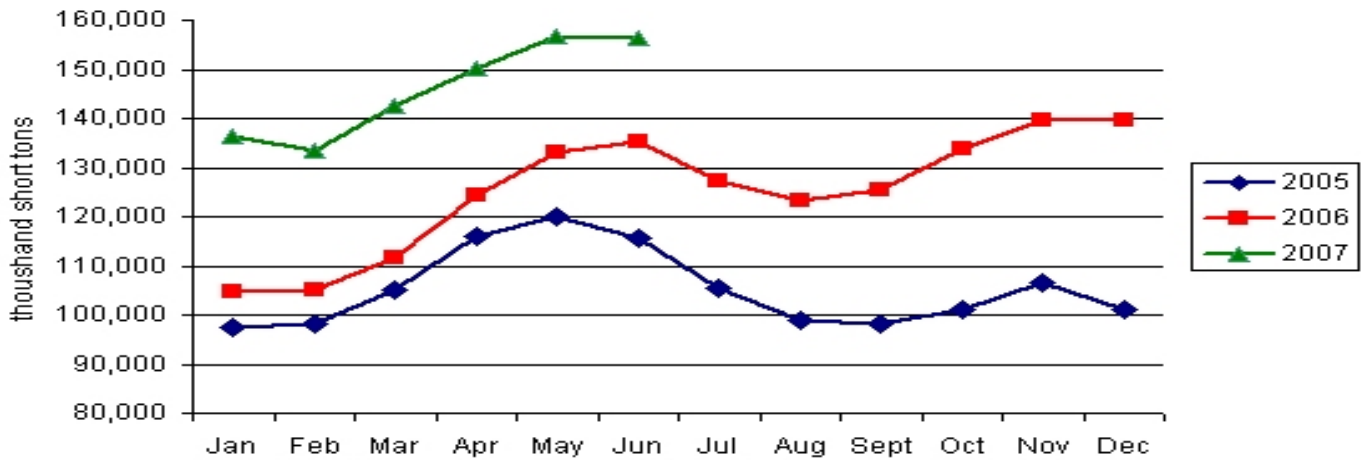
Source: Trade Tech, Uranium Info Website – <http://www.uranium.info>

Coal and Coke Monthly Tonnage Indicator for Internal U.S. Waterways



Source: U.S. Army Corps of engineers, Waterborne Commerce Statistics Center

Electric Power Sector Coal Stocks



The following average spot coal prices appear in the graphic below, for the previous and most recent weeks:

Week Ended	Central Appalachia 12,500 Btu, 1.2 SO2	Northern Appalachia 13,000 Btu, <3.0 SO2	Illinois Basin 11,800 Btu, 5.0 SO2	Powder River Basin 8,800 Btu, 0.8 SO2	Uinta Basin 11,700 Btu, 0.8 SO2
05-Oct-07	\$47.90	\$46.50	\$32.00	\$10.50	\$26.00
12-Oct-07	\$47.90	\$46.50	\$32.00	\$10.40	\$26.00
19-Oct-07	\$48.90	\$46.50	\$33.50	\$10.75	\$24.00
26-Oct-07	\$49.90	\$46.50	\$33.50	\$11.05	\$24.00
02-Nov-07	\$49.90	\$46.50	\$33.50	\$11.05	\$24.00
09-Nov-07	\$49.90	\$46.50	\$33.50	\$11.05	\$24.00

Source: Energy Information Administration