
National Mining Association

Weekly Statistical Summary

November 30, 2007 Edition
(Data for Week Ending November 24, 2007)

Prepared by
National Mining Association



Suite 500 East, 101 Constitution Avenue, NW
Washington, DC, 20001
Phone (202) 463-2600
Visit us at <http://www.nma.org>

NMA Weekly Statistical Summary

Vol. 45, No. 47
Dated 11/30/07

PRODUCTION, CONSUMPTION & TRADE						
	Week Ended			Cumulative Jan 1 to		
	11/24/07	11/25/06	% Chng	11/24/07	11/25/06	% Chng
EIA Coal Production (000 Tons):						
Week Ended/Year to Date	21,385	21,718	-1.5%	1,034,626	1,047,160	-1.2%
52 Weeks Ended	1,147,586	1,155,496	-0.7%			
Month Ended -- October						
	October 07/06		% Chng	Jan - Oct 07/06		% Chng
	100,234	98,808	1.4%	958,146	970,161	-1.2%
MONTH ENDED AND CUMULATIVE NUMBERS ARE PRELIMINARY AND SUBJECT TO CHANGE						
DOC Bituminous Coal Trade (000 Tons)						
Exports:						
	September 07/06		% Chng	Jan - Sep 07/06		% Chng
Metallurgical	2,731	2,488	9.8%	23,856	20,499	16.4%
Steam	2,139	2,595	-17.6%	17,836	16,054	11.1%
Imports:						
	3,470	3,370	3.0%	27,750	27,313	1.6%
EEI Electric Output (Mil. Kwh)						
	Week Ended			Cumulative Jan 1 to		
	11/24/07	11/25/06	% Chng	11/24/07	11/25/06	% Chng
	71,597	71,398	0.3%	3,709,448	3,610,760	2.7%
AISI Raw Steel Output (000 Tons)						
	2,044	1,887	8.3%	96,206	99,456	-3.3%
EIA U.S. PETROLEUM DATA						
4-Week Averages 000 Barrels per Day						
PETROLEUM SUPPLY:						
	Week Ending			Cumulative Daily Averages		
	11/23/07	11/23/06	% Chng	2007	2006	% Chng
Domestic Crude	5,080	5,105	-0.5	5,134	5,096	0.7
Net Imports (Incl. SPR)	10,054	9,908	1.5	9,982	10,143	-1.6
SPR Stocks W/D or Added	-30	-5	--	-19	-12	--
Other Stocks W/D or added	-17	81	--	10	-37	--
Natural Gas Liquids Prod.	2,403	2,453	-2.0	2,382	2,218	7.4



NMA
THE AMERICAN RESOURCE

National Mining Association Web Site: [http:// www.nma.org](http://www.nma.org)

EIA Estimated Weekly U.S. Coal Production Overview (Thousand Short Tons)

Coal-Producing Region and State	Week Ended			Year To Date		Percent Change	52 Weeks Ended		Percent Change
	11/24/2007	11/17/2007	11/25/2006	11/24/2007	11/24/2006		11/24/2007	11/25/2006	
Alabama	326	365	322	17,634	17,313	1.9	19,290	19,115	0.9
Alaska	25	28	28	1,359	1,280	6.2	1,504	1,397	7.6
Arizona	116	130	148	7,065	7,437	-5.0	7,827	8,463	-7.5
Arkansas	1	1	1	55	18	197.5	59	19	215.4
Colorado	628	703	656	33,319	32,748	1.7	36,817	35,943	2.4
Illinois	583	653	594	31,540	29,540	6.8	34,687	32,392	7.1
Indiana	613	688	639	32,135	31,668	1.5	35,501	35,091	1.2
Kansas	9	10	10	409	367	11.6	467	385	21.2
Kentucky Total	2,023	2,267	2,052	105,239	110,148	-4.5	116,042	121,193	-4.2
Eastern	1,487	1,667	1,562	79,103	85,516	-7.5	87,317	94,159	-7.3
Western	535	600	491	26,136	24,633	6.1	28,725	27,034	6.3
Louisiana	97	85	0	2,749	3,626	-24.2	3,237	4,081	-20.7
Maryland	64	72	49	3,070	4,797	-36.0	3,325	5,271	-36.9
Mississippi	39	39	65	3,293	3,429	-4.0	3,651	3,712	-1.7
Missouri	4	4	6	231	365	-36.9	259	429	-39.8
Montana	740	829	766	36,587	37,621	-2.7	40,694	41,364	-1.6
New Mexico	430	482	488	23,097	23,284	-0.8	25,659	26,113	-1.7
North Dakota	508	570	570	25,524	27,330	-6.6	28,515	30,260	-5.8
Ohio	387	434	402	20,114	20,564	-2.2	22,214	22,938	-3.2
Oklahoma	33	37	32	1,644	1,827	-10.0	1,812	2,010	-9.9
Pennsylvania Total	1,097	1,230	1,155	59,134	59,952	-1.4	65,218	66,440	-1.8
Anthracite	30	33	27	1,389	1,389	0.1	1,536	1,546	-0.6
Bituminous	1,067	1,196	1,128	57,745	58,563	-1.4	63,682	64,894	-1.9
Tennessee	44	49	48	2,444	2,556	-4.4	2,691	2,858	-5.8
Texas	760	852	810	38,451	41,091	-6.4	42,788	45,779	-6.5
Utah	410	460	488	21,917	23,422	-6.4	24,487	25,834	-5.2
Virginia	485	544	511	25,880	27,152	-4.7	28,548	29,566	-3.4
Washington	0	0	48	0	2,570	-100.0	s	3,116	-100.0
West Virginia Total	2,596	2,910	2,618	138,824	138,310	0.4	152,610	152,389	0.1
Northern	787	882	697	41,289	38,705	6.7	44,953	42,638	5.4
Southern	1,809	2,028	1,921	97,534	99,605	-2.1	107,657	109,752	-1.9
Wyoming	9,367	9,195	9,213	402,911	398,743	1.0	449,687	439,339	2.4
Appalachian Total	6,486	7,271	6,665	346,203	356,160	-2.8	381,212	392,736	-2.9
Interior Total	2,675	2,970	2,647	136,642	136,565	0.1	151,184	150,932	0.2
Western Total	12,224	12,398	12,406	551,780	554,435	-0.5	615,190	611,829	0.5
East of Miss. River	8,256	9,250	8,455	439,307	445,430	-1.4	483,775	490,964	-1.5
West of Miss. River	13,129	13,388	13,264	595,318	601,730	-1.1	663,810	664,532	-0.1
Bituminous and Lignite	21,356	22,605	21,692	1,033,236	1,045,771	-1.2	1,146,050	1,153,951	-0.7
Anthracite	30	33	27	1,389	1,389	0.1	1,536	1,546	-0.6
U.S. Total	21,385	22,638	21,718	1,034,625	1,047,160	-1.2	1,147,586	1,155,496	-0.7
Railroad Cars Loaded	136,258	148,094	137,092	6,699,211	6,746,025	-0.7	7,408,543	7,411,677	*

Source: Energy Information Administration



WEEKLY ELECTRIC OUTPUT

Essential Energy Information from EEI's Statistics Department

Volume 75 No. 47

OUTPUT FOR WEEK ENDED - Nov 24, 2007

Nov 28, 2007

The net available amount of electric energy distributed by the Total Electric Utility Industry+ for the week ended Saturday, **Nov 24, 2007** was **71,597** gigawatthours (GWh), according to the Edison Electric Institute. This is equivalent to **179** on the weekly electric output index.

WEEKLY ELECTRIC OUTPUT BY GEOGRAPHIC DIVISION

(48 CONTIGUOUS STATES)

	Week Ended November 24		52 Weeks Ended November 24	
	GWh Output	% Increase Over Corresponding Week of 2006	GWh Output	% Increase Over Corresponding Period of 2006
New England	2,448	3.0	133,774	1.0
Mid-Atlantic	8,099	1.4	456,032	2.2
Central Industrial	12,813	0.6	719,063	2.9
West Central	6,059	2.7	350,997	1.8
Southeast	18,786	-4.8	1,103,232	2.5
South Central	9,880	2.0	597,750	-0.1
Rocky Mountain	5,293	6.6	275,452	6.2
Pacific Northwest	3,329	7.1	158,286	4.3
Pacific Southwest	4,890	-0.4	292,969	0.5
Total United States	71,597	0.3	4,087,555	2.2

WEEKLY ELECTRIC OUTPUT IN PREVIOUS WEEKS--GWh

Week Ended	2007	Week Ended	2006	% Inc. (07/06)	52 Weeks Ended	2007	% Inc. (07/06)
Nov 03	70,822	Nov 04	71,648	-1.2	Nov 03	4,084,694	2.2
Nov 10	72,953	Nov 11	71,604	1.9	Nov 10	4,086,044	2.2
Nov 17	73,355	Nov 18	72,042	1.8	Nov 17	4,087,356	2.2
Nov 24	71,597	Nov 25	71,398	0.3	Nov 24	4,087,555	2.2
Nov 24	3,709,448	Nov 25	3,610,760	2.7	YEAR TO DATE, FIRST 47 WEEKS		

WEEKLY ELECTRIC OUTPUT INDEX--TOTAL U.S.*

SEASONALLY ADJUSTED 1982 = 100

Week Ended	2007	Week Ended	2006	Week Ended	2005
Nov 03	177	Nov 04	176	Nov 05	176
Nov 10	185	Nov 11	182	Nov 12	175
Nov 17	184	Nov 18	181	Nov 19	179
Nov 24	179	Nov 25	179	Nov 26	181

* Excludes Alaska and Hawaii.

+ Includes investor-owned companies, cooperatives and government-owned utilities.

Copyright © 2007 Edison Electric Institute. All rights reserved.

WEEKLY ELECTRIC OUTPUT BY GEOGRAPHIC DIVISION (48 CONTIGUOUS STATES)

	Week Ended			NMA CUMULATIVE JANUARY 1 to			52 Weeks Ended		
	24-Nov	25-Nov	% Increase Over Corresponding Week of 2006	24-Nov	25-Nov	% Increase Over Corresponding Week of 2006	24-Nov	25-Nov	% Increase Over Corresponding Week of 2006
	2007	2006		2007	2006		2007	2006	
	GWh Output	GWh Output		GWh Output	GWh Output		GWh Output	GWh Output	
New England	2,448	2,376	3.0%	121,123	119,173	1.6%	133,774	132,503	1.0%
Mid-Atlantic	8,099	7,989	1.4%	414,256	401,975	3.1%	456,032	446,236	2.2%
Central Industrial	12,813	12,742	0.6%	651,431	627,255	3.9%	719,063	698,901	2.9%
West Central	6,059	5,898	2.7%	318,113	311,266	2.2%	350,997	344,807	1.8%
Southeast	18,786	19,725	-4.8%	1,002,522	971,382	3.2%	1,103,232	1,076,036	2.5%
South Central	9,880	9,686	2.0%	545,260	545,880	-0.1%	597,750	598,311	-0.1%
Rocky Mountain	5,293	4,963	6.6%	249,997	235,168	6.3%	275,452	259,296	6.2%
Pacific Northwest	3,329	3,108	7.1%	140,373	133,460	5.2%	158,286	151,717	4.3%
Pacific Southwest	4,890	4,911	-0.4%	266,372	265,204	0.4%	292,969	291,620	0.5%
Total United States *	71,597	71,398	0.3%	3,709,447	3,610,763	2.7%	4,087,555	3,999,427	2.2%

Notes: EEI output data are an estimate of electricity load made available for distribution derived as weekly net generation + purchases from non-utilities + net imports - exports - sales for resale. It is not meant to be a measure of electricity generation for the U.S. EEI survey data represent the majority of national distribution (large utilities, large government power projects, some independent and large municipal power projects). The remaining segment of the industry (smaller producers) is estimated. Non-utility generation is captured via direct sales to utilities.

* Excludes Alaska and Hawaii

** Less than one-tenth of one percent

SOURCE: Edison Electric Institute (EEI), *Weekly Electric Output Report*.

AMERICAN IRON AND STEEL INSTITUTE
 1140 Connecticut Avenue, Suite 705
 Washington, D.C. 20036

November 26, 2007

ESTIMATED WEEKLY RAW STEEL* PRODUCTION

<u>Period</u>	Thousand <u>Net Tons</u>	Percent Change from Previous <u>Period</u>	Percent Capability <u>Utilization**</u>	<u>Production by District</u>		
				<u>Week Ending</u>		
				<u>Nov 24</u>	<u>Nov 17</u>	
<u>Week Ending</u>						
				North East Coast	115	122
				Pgh/Youngstown	182	194
				Lake Erie	94	102
Nov. 24, 2007	2,044	-0.4	85.7	Detroit	134	117
Nov. 24, 2006	1,887	8.3	81.5	Indiana/Chicago	558	563
Nov. 17, 2007	2,054	-3.5	86.1	Midwest	243	230
				Southern	635	636
<u>Year-to-Date+</u>				Western	<u>83</u>	<u>90</u>
Nov. 24, 2007	96,206	-3.2	86.1	Total	2044	2054
Nov. 24, 2006	99,456	-	89.0			

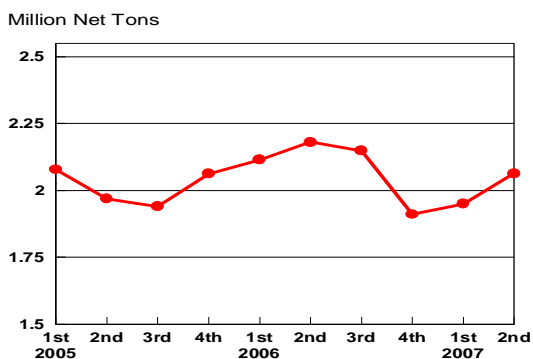
*Raw steel production tonnage included in this report is estimated based on a sampling of steel producers. Therefore, this report should be used primarily to assess production trends. The AISI production report "AIS 7," produced monthly and available by subscription, provides a more accurate summary of steel production based on data supplied by companies representing approximately 75% of U.S. production capacity.

+Includes revisions for previous months

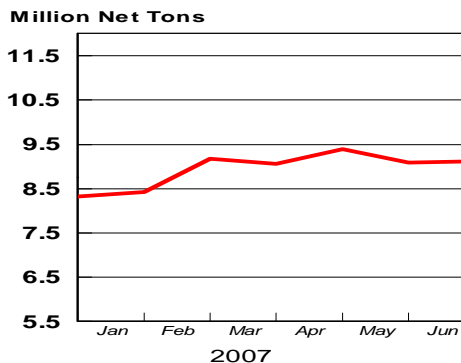
NOTE: Capability for the Fourth Quarter 2007 is approximately 31.3 million net tons vs 30.7 million net tons for the same period last year, and 30.1 million tons for the third quarter of 2007.

Capability -	2003 approx.	2.3 million tons/week
	2004	2
	2005	2
	2006	2
	2007	2

Average Weekly Raw Steel Production

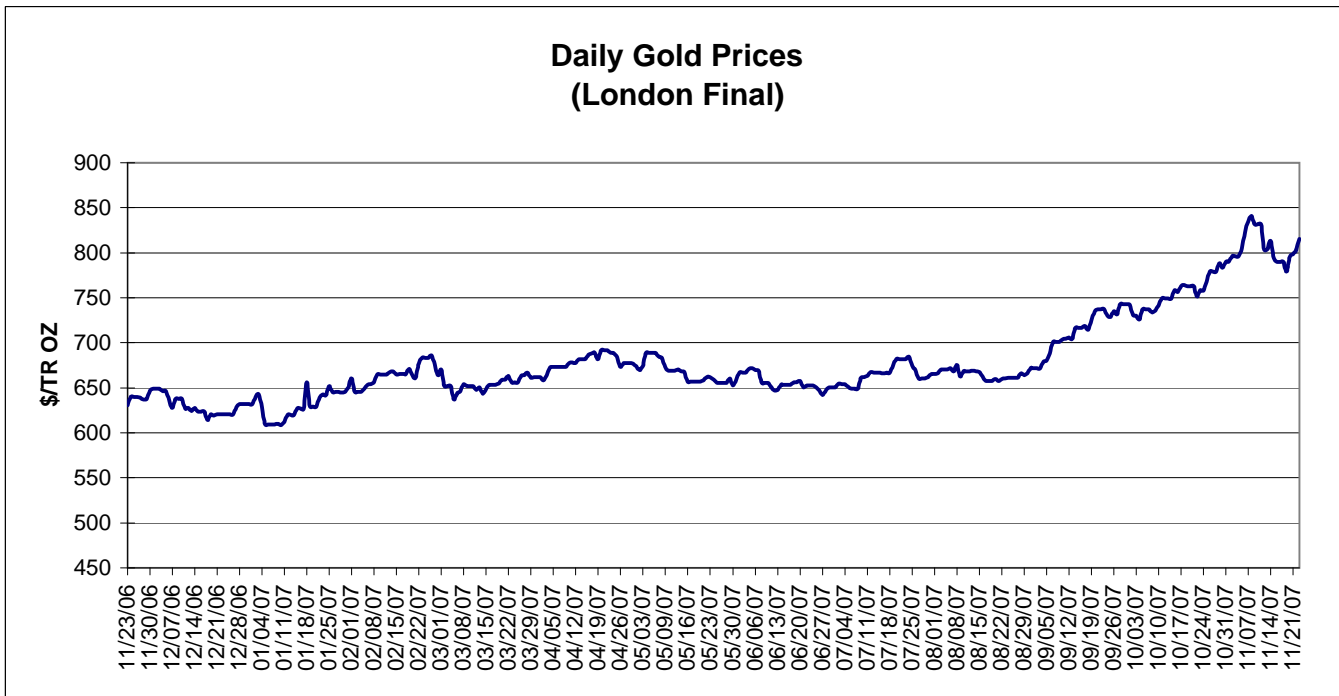
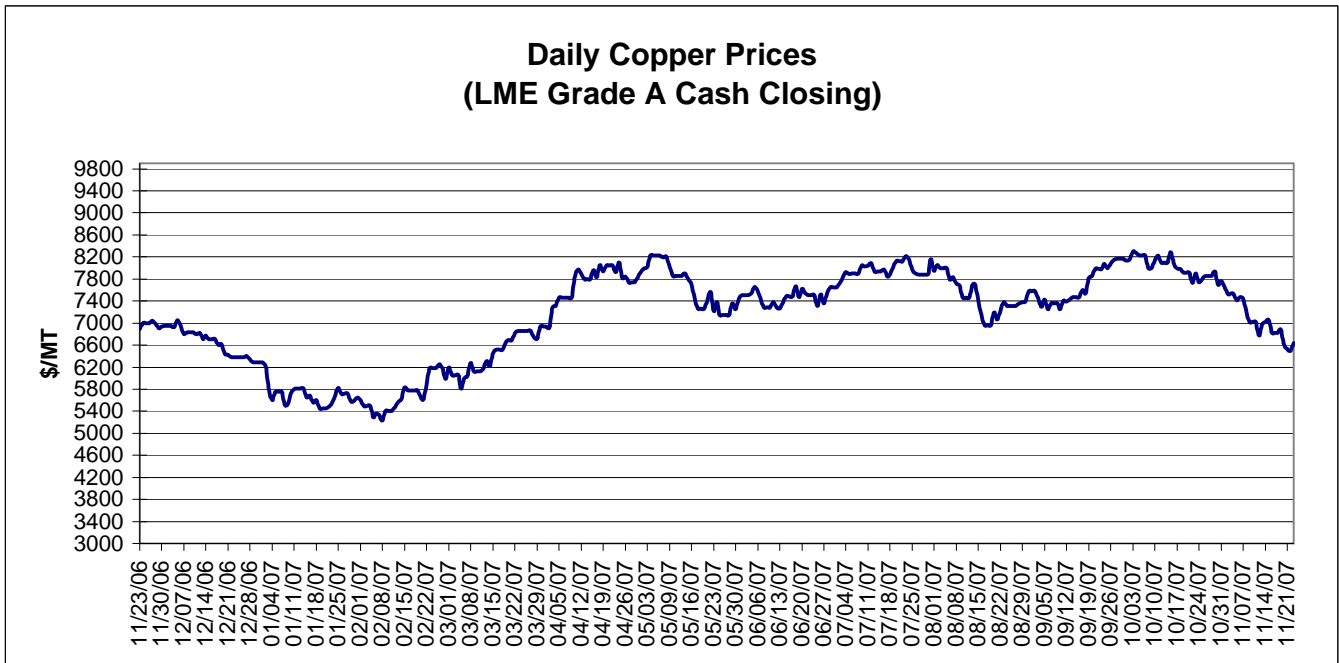


MONTHLY RAW STEEL PRODUCTION



*Steel in the first solid state after melting suitable for further processing or sale, including ingots, steel for castings and strand or pressure cast blooms, slabs, or other product forms.

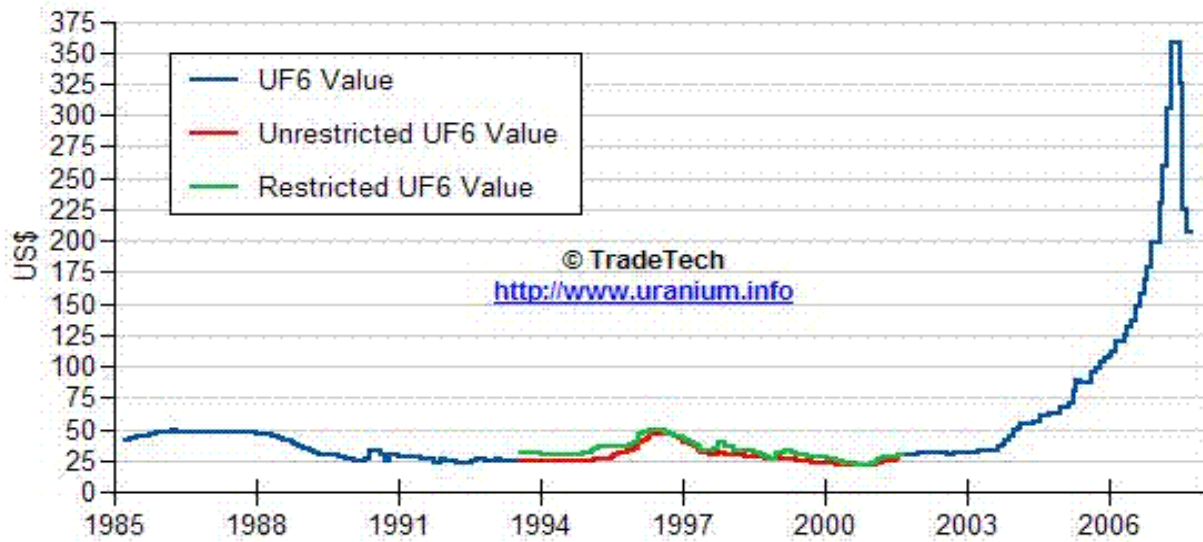
** Based on tonnage capability to produce raw steel for a sustained full order book.



Data reflect closings on weekends and holidays.

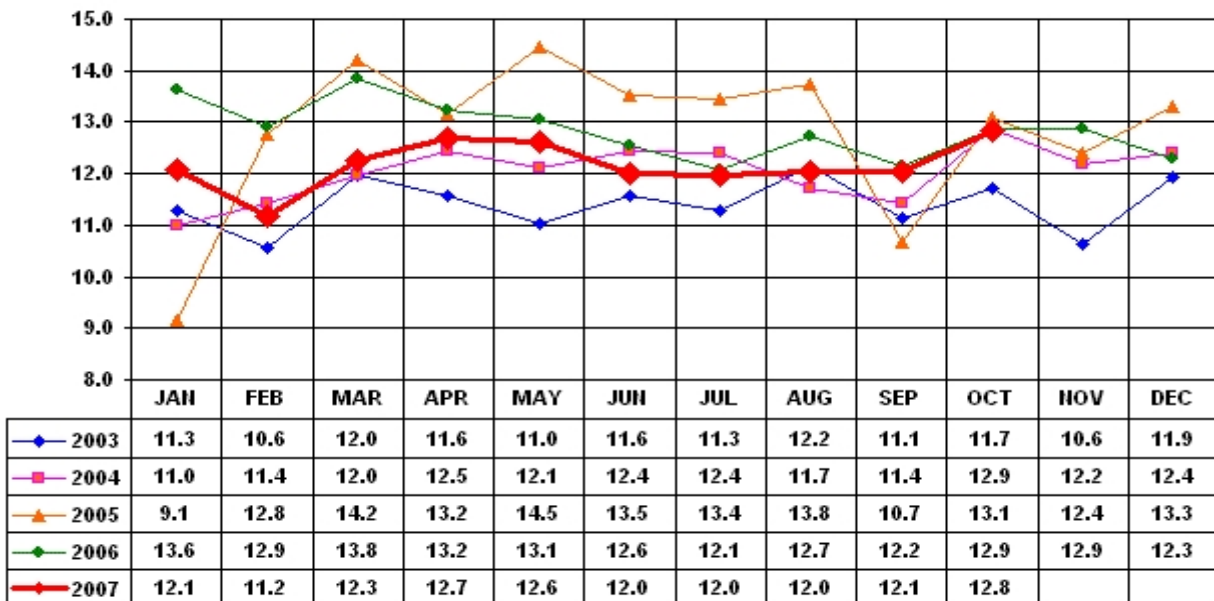
Source: Platts Metals Week

Trade Tech's Uranium (UF6) Monthly Spot Prices (US\$/kg as UF6)



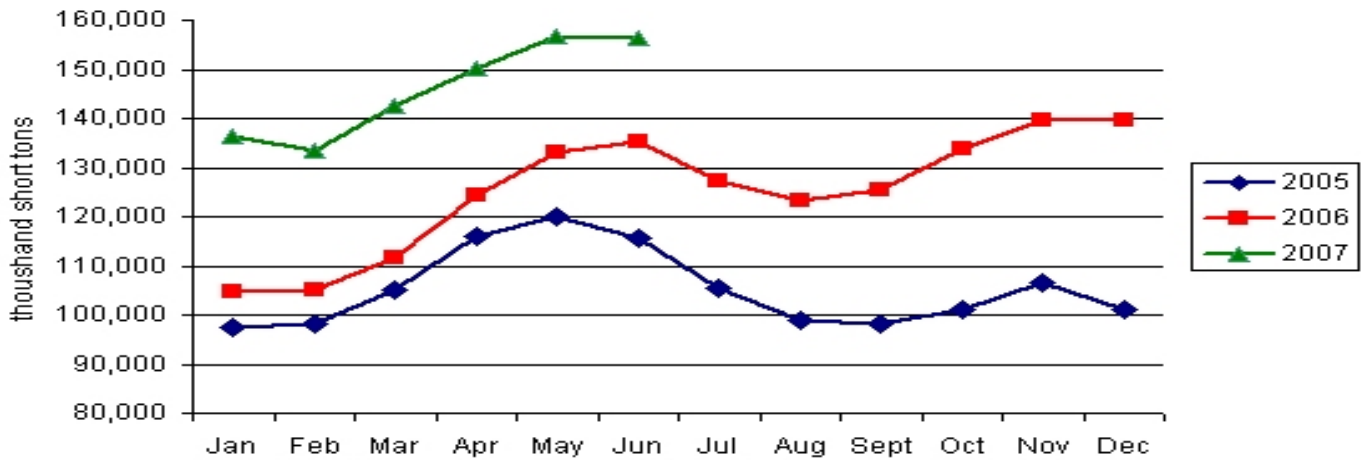
Source: Trade Tech, Uranium Info Website – <http://www.uranium.info>

Coal and Coke Monthly Tonnage Indicator for Internal U.S. Waterways



Source: U.S. Army Corps of engineers, Waterborne Commerce Statistics Center

Electric Power Sector Coal Stocks



The following average spot coal prices appear in the graphic below, for the previous and most recent weeks:

Week Ended	Central Appalachia 12,500 Btu, 1.2 SO2	Northern Appalachia 13,000 Btu, <3.0 SO2	Illinois Basin 11,800 Btu, 5.0 SO2	Powder River Basin 8,800 Btu, 0.8 SO2	Uinta Basin 11,700 Btu, 0.8 SO2
19-Oct-07	\$48.90	\$46.50	\$33.50	\$10.75	\$24.00
26-Oct-07	\$49.90	\$46.50	\$33.50	\$11.05	\$24.00
02-Nov-07	\$49.90	\$46.50	\$33.50	\$11.05	\$24.00
09-Nov-07	\$49.90	\$46.50	\$33.50	\$11.05	\$24.00
16-Nov-07	\$52.95	\$55.25	\$33.50	\$11.05	\$24.00
23-Nov-07	\$52.95	\$55.25	\$33.50	\$11.05	\$24.00

Source: Energy Information Administration