
National Mining Association

Weekly Statistical Summary

January 16, 2009 Edition
(Data for Week Ending January 10, 2009)

Prepared by
National Mining Association



Suite 500 East, 101 Constitution Avenue, NW
Washington, DC, 20001
Phone (202) 463-2600
Visit us at <http://www.nma.org>

NMA Weekly Statistical Summary

Vol. 47, No. 2
Dated 01/16/09

| PRODUCTION, CONSUMPTION & TRADE | | | | | | |
|--|----------------|-----------|--------|---------------------------|-----------|--------|
| | Week Ended | | | * Cumulative Jan 1 to | | |
| | 01/10/09 | 01/12/08 | % Chng | 01/10/09 | 01/10/08 | % Chng |
| EIA Coal Production (000 Tons): | | | | | | |
| Week Ended/Year to Date | 22,825 | 22,149 | 3.1% | 31,084 | 32,253 | -3.6% |
| 52 Weeks Ended | 1,163,583 | 1,142,672 | 1.8% | | | |
| * Due to leap year, 2008 cumulative reflects one extra day of tonnage. | | | | | | |
| Month Ended -- December | December 08/07 | | % Chng | Jan - Dec 08/07 | | % Chng |
| | 99,271 | 93,138 | 6.6% | 1,170,188 | 1,146,635 | 2.1% |
| MONTH ENDED AND CUMULATIVE NUMBERS ARE PRELIMINARY AND SUBJECT TO CHANGE | | | | | | |
| DOC Bituminous Coal Trade (000 Tons) | | | | | | |
| Exports: | Nov 08/07 | | % Chng | Jan - Nov 08/07 | | % Chng |
| | 3,636 | 3,096 | 17.4% | 40,363 | 29,528 | 36.7% |
| Metallurgical | | | | | | |
| Steam | 3,785 | 3,119 | 21.4% | 34,152 | 23,273 | 46.7% |
| Imports: | 2,988 | 2,889 | 3.4% | 31,015 | 33,535 | -7.5% |
| | Week Ended | | | * Cumulative Jan 1 to | | |
| | 01/10/09 | 01/12/08 | % Chng | 01/10/09 | 01/12/08 | % Chng |
| EEl Electric Output (Mil. Kwh) | 77,282 | 75,302 | 2.6% | 149,947 | 155,288 | -3.4% |
| AISI Raw Steel Output (000 Tons) | 1,062 | 2,154 | -50.7% | 1,434 | 3,075 | -53.4% |
| Data not available for AISI Raw Steel | | | | | | |
| EIA U.S. PETROLEUM DATA | | | | | | |
| 4-Week Averages 000 Barrels per Day | | | | | | |
| PETROLEUM SUPPLY: | Week Ending | | | Cumulative Daily Averages | | |
| | 01/09/09 | 01/09/08 | % Chng | 2008 | 2007 | % Chng |
| Domestic Crude | 4,951 | 5,067 | -2.3 | | | |
| Net Imports (Incl. SPR) | 9,617 | 9,865 | -2.5 | | | |
| SPR Stocks W/D or Added | 0 | -46 | -- | | | |
| Other Stocks W/D or added | -2 | 214 | -- | | | |
| Natural Gas Liquids Prod. | 2,291 | 2,366 | -3.2 | | | |
| Cumulative daily petroleum averages will be shown beginning with week ending April 3, 2009 data. | | | | | | |



NMA

THE AMERICAN RESOURCE National Mining Association Web Site: [http:// www.nma.org](http://www.nma.org)

EIA Estimated Weekly U.S. Coal Production Overview (Thousand Short Tons)

| Coal-Producing Region and State | Week Ended | | | Year to Date | | Percent Change | 52 Weeks Ended | | Percent Change |
|------------------------------------|---------------|---------------|---------------|---------------|---------------|-------------------|------------------|------------------|-------------------|
| | 1/10/2009 | 1/3/2009 | 1/12/2008 | 1/10/2009 | 1/10/2008 | | 1/10/2009 | 1/12/2008 | |
| Alabama | 421 | 378 | 438 | 564 | 628 | -10.3 | 20,629 | 19,476 | 5.9 |
| Alaska | 26 | 25 | 30 | 32 | 41 | -21.7 | 1,356 | 1,303 | 4.0 |
| Arizona | 171 | 147 | 146 | 221 | 230 | -4.1 | 7,992 | 7,942 | 0.6 |
| Arkansas | 1 | 1 | 1 | 2 | 2 | -8.5 | 58 | 82 | -28.7 |
| Colorado | 688 | 652 | 638 | 943 | 868 | 8.6 | 33,635 | 36,298 | -7.3 |
| Illinois | 604 | 566 | 603 | 788 | 829 | -4.9 | 31,791 | 32,411 | -1.9 |
| Indiana | 719 | 683 | 675 | 970 | 970 | * | 35,922 | 34,853 | 3.1 |
| Kansas | 5 | 5 | 6 | 7 | 9 | -14.3 | 284 | 415 | -31.4 |
| Kentucky Total | 2,197 | 2,096 | 2,320 | 2,884 | 3,327 | -13.3 | 118,046 | 114,988 | 2.7 |
| Eastern | 1,646 | 1,563 | 1,751 | 2,146 | 2,532 | -15.2 | 88,798 | 86,886 | 2.2 |
| Western | 551 | 533 | 569 | 737 | 795 | -7.3 | 29,248 | 28,102 | 4.1 |
| Louisiana | 79 | 103 | 83 | 118 | 134 | -11.6 | 3,916 | 3,136 | 24.9 |
| Maryland | 49 | 53 | 40 | 64 | 58 | 11.3 | 2,563 | 2,280 | 12.5 |
| Mississippi | 59 | 59 | 70 | 83 | 107 | -21.9 | 2,709 | 3,555 | -23.8 |
| Missouri | 6 | 6 | 4 | 8 | 6 | 32.1 | 253 | 234 | 8.2 |
| Montana | 871 | 837 | 874 | 1,210 | 1,199 | 1.0 | 44,051 | 43,420 | 1.5 |
| New Mexico | 584 | 579 | 357 | 794 | 521 | 52.3 | 27,776 | 24,244 | 14.6 |
| North Dakota | 566 | 555 | 544 | 770 | 807 | -4.6 | 29,490 | 29,381 | 0.4 |
| Ohio | 479 | 455 | 471 | 651 | 673 | -3.2 | 25,380 | 22,537 | 12.6 |
| Oklahoma | 33 | 33 | 30 | 44 | 44 | * | 1,468 | 1,637 | -10.3 |
| Pennsylvania Total | 1,277 | 1,164 | 1,329 | 1,686 | 1,893 | -10.9 | 64,031 | 64,796 | -1.2 |
| Anthracite | 22 | 20 | 30 | 29 | 42 | -31.4 | 1,506 | 1,557 | -3.3 |
| Bituminous | 1,255 | 1,144 | 1,300 | 1,657 | 1,851 | -10.5 | 62,526 | 63,239 | -1.1 |
| Tennessee | 49 | 49 | 49 | 62 | 71 | -12.9 | 2,432 | 2,630 | -7.5 |
| Texas | 787 | 711 | 719 | 1,090 | 982 | 11.0 | 38,381 | 41,751 | -8.1 |
| Utah | 458 | 440 | 509 | 592 | 720 | -17.8 | 23,582 | 24,247 | -2.7 |
| Virginia | 493 | 490 | 439 | 662 | 618 | 7.1 | 24,767 | 25,121 | -1.4 |
| West Virginia Total | 3,067 | 2,949 | 3,064 | 4,094 | 4,355 | -6.0 | 158,444 | 152,741 | 3.7 |
| Northern | 826 | 766 | 799 | 1,056 | 1,092 | -3.3 | 40,525 | 41,780 | -3.0 |
| Southern | 2,241 | 2,183 | 2,265 | 3,038 | 3,264 | -6.9 | 117,919 | 110,961 | 6.3 |
| Wyoming | 9,135 | 8,697 | 8,712 | 12,743 | 13,161 | -3.2 | 464,625 | 453,193 | 2.5 |
| Appalachian Total | 7,482 | 7,101 | 7,580 | 9,930 | 10,828 | -8.3 | 387,044 | 376,468 | 2.8 |
| Interior Total | 2,845 | 2,699 | 2,761 | 3,849 | 3,877 | -0.7 | 144,031 | 146,177 | -1.5 |
| Western Total | 12,498 | 11,932 | 11,808 | 17,306 | 17,548 | -1.4 | 632,507 | 620,028 | 2.0 |
| East of Miss. River | 9,415 | 8,941 | 9,497 | 12,509 | 13,528 | -7.5 | 486,714 | 475,390 | 2.4 |
| West of Miss. River | 13,410 | 12,791 | 12,652 | 18,576 | 18,725 | -0.8 | 676,869 | 667,282 | 1.4 |
| Bituminous and Lignite | 22,803 | 21,712 | 22,119 | 31,056 | 32,212 | -3.6 | 1,162,077 | 1,141,116 | 1.8 |
| Anthracite | 22 | 20 | 30 | 29 | 42 | -31.4 | 1,506 | 1,557 | -3.3 |
| U.S. Total | 22,825 | 21,732 | 22,149 | 31,084 | 32,253 | -3.6 | 1,163,583 | 1,142,672 | 1.8 |
| Railroad Cars Loaded | 146,003 | 138,598 | 146,973 | 284,601 | 281,284 | 1.2 | 7,655,886 | 7,411,030 | 3.3 |

Source: Energy Information Administration



Volume 77 No. 2

OUTPUT FOR WEEK ENDED - Jan 10, 2009

Jan 14, 2009

The net available amount of electric energy distributed by the Total Electric Utility Industry* for the week ended Saturday, **Jan 10, 2009** was **77,282** gigawatthours (GWh), according to the Edison Electric Institute. This is equivalent to **181** on the weekly electric output index.

WEEKLY ELECTRIC OUTPUT BY GEOGRAPHIC DIVISION
(48 CONTIGUOUS STATES)

| | Week Ended January 10 | | 52 Weeks Ended January 10 | |
|---------------------|-----------------------|--|---------------------------|--|
| | GWh Output | % Increase Over Corresponding Week of 2008 | GWh Output | % Increase Over Corresponding Period of 2008 |
| New England | 2,644 | 5.8 | 130,801 | -2.8 |
| Mid-Atlantic | 8,922 | 9.9 | 451,480 | -1.7 |
| Central Industrial | 13,928 | 2.6 | 707,675 | -2.1 |
| West Central | 6,819 | 1.4 | 345,128 | -2.2 |
| Southeast | 20,038 | 2.6 | 1,087,435 | -2.0 |
| South Central | 10,558 | 3.6 | 599,536 | 0.1 |
| Rocky Mountain | 5,181 | 2.0 | 276,407 | -0.6 |
| Pacific Northwest | 3,886 | -2.6 | 167,469 | 4.8 |
| Pacific Southwest | 5,306 | -4.9 | 291,446 | 0.1 |
| Total United States | 77,282 | 2.6 | 4,057,375 | -1.2 |

WEEKLY ELECTRIC OUTPUT IN PREVIOUS WEEKS--GWh

| Week Ended | 2009 | Week Ended | 2008 | % Inc. (09/08) | 52 Weeks Ended | 2009 | % Inc. (09/08) |
|------------|---------|------------|---------|----------------|-----------------------------|-----------|----------------|
| Dec 20 | 79,709 | Dec 22 | 80,631 | -1.1 | Dec 20 | 4,059,838 | -0.9 |
| Dec 27 | 77,710 | Dec 29 | 74,832 | 3.8 | Dec 27 | 4,062,716 | -0.9 |
| Jan 03 | 72,665 | Jan 05 | 79,986 | -9.2 | Jan 03 | 4,055,395 | -1.3 |
| Jan 10 | 77,282 | Jan 12 | 75,302 | 2.6 | Jan 10 | 4,057,375 | -1.2 |
| Jan 10 | 149,947 | Jan 12 | 155,288 | -3.4 | YEAR TO DATE, FIRST 2 WEEKS | | |

WEEKLY ELECTRIC OUTPUT INDEX--TOTAL U.S.*
SEASONALLY ADJUSTED 1982 = 100

| Week Ended | 2009 | Week Ended | 2008 | Week Ended | 2007 |
|------------|------|------------|------|------------|------|
| Dec 20 | 182 | Dec 22 | 180 | Dec 23 | 170 |
| Dec 27 | 184 | Dec 29 | 175 | Dec 30 | 169 |
| Jan 03 | 176 | Jan 05 | 192 | Jan 06 | 171 |
| Jan 10 | 181 | Jan 12 | 174 | Jan 13 | 172 |

* Excludes Alaska and Hawaii.

+ Includes investor-owned companies, cooperatives and government-owned utilities.

Copyright © 2009 Edison Electric Institute. All rights reserved.

WEEKLY ELECTRIC OUTPUT BY GEOGRAPHIC DIVISION (48 CONTIGUOUS STATES)

| | Week Ended | | | NMA CUMULATIVE JANUARY WEEK ONE TO | | | 52 Weeks Ended | | |
|------------------------------|---------------------------------|---------------------------------|--|------------------------------------|---------------------------------|--|---------------------------------|---------------------------------|--|
| | 10-Jan 2009 GWh Output | 12-Jan 2008 GWh Output | % Increase Over Corresponding Week of 2008 | 10-Jan 2009 GWh Output | 12-Jan 2008 GWh Output | % Increase Over Corresponding Week of 2008 | 10-Jan 2009 GWh Output | 12-Jan 2008 GWh Output | % Increase Over Corresponding Week of 2008 |
| New England | 2,644 | 2,500 | 5.8% | 5,178 | 5,169 | 0.2% | 130,801 | 134,629 | -2.8% |
| Mid-Atlantic | 8,922 | 8,118 | 9.9% | 17,469 | 17,027 | 2.6% | 451,480 | 459,482 | -1.7% |
| Central Industrial | 13,928 | 13,582 | 2.5% | 26,717 | 27,583 | -3.1% | 707,675 | 722,872 | -2.1% |
| West Central | 6,819 | 6,723 | 1.4% | 12,993 | 13,303 | -2.3% | 345,128 | 352,768 | -2.2% |
| Southeast | 20,038 | 19,533 | 2.6% | 38,847 | 41,666 | -6.8% | 1,087,435 | 1,109,178 | -2.0% |
| South Central | 10,558 | 10,195 | 3.6% | 20,236 | 21,783 | -7.1% | 599,536 | 598,683 | 0.1% |
| Rocky Mountain | 5,181 | 5,081 | 2.0% | 10,331 | 10,412 | -0.8% | 276,407 | 278,026 | -0.6% |
| Pacific Northwest | 3,886 | 3,990 | -2.6% | 7,839 | 8,046 | -2.6% | 167,469 | 159,764 | 4.8% |
| Pacific Southwest | 5,306 | 5,580 | -4.9% | 10,337 | 10,299 | 0.4% | 291,446 | 291,062 | 0.1% |
| Total United States * | <u>77,282</u> | <u>75,302</u> | 2.6% | <u>149,947</u> | <u>155,288</u> | -3.4% | <u>4,057,377</u> | <u>4,106,464</u> | -1.2% |

Notes: EEI output data are an estimate of electricity load made available for distribution derived as weekly net generation + purchases from non-utilities + net imports - exports - sales for resale. It is not meant to be a measure of electricity generation for the U.S. EEI survey data represent the majority of national distribution (large utilities, large government power projects, some independent and large municipal power projects). The remaining segment of the industry (smaller producers) is estimated. Non-utility generation is captured via direct sales to utilities.

* Excludes Alaska and Hawaii

SOURCE: Edison Electric Institute (EEI), *Weekly Electric Output Report*.

AMERICAN IRON AND STEEL INSTITUTE
 1140 Connecticut Avenue, Suite 705
 Washington, D.C. 20036

January 12, 2009

ESTIMATED WEEKLY RAW STEEL * PRODUCTION

| Period | Thousand Net Tons | Percent Change from Previous Period | Percent Capability Utilization** | Production by District | | |
|----------------------|-------------------|-------------------------------------|----------------------------------|------------------------|--------|-----|
| | | | | Week Ending | | |
| | | | | Jan. 10 | Jan. 3 | |
| Week Ending | | | | North East Coast | 88 | 91 |
| | | | | Pgh/Youngstown | 84 | 98 |
| January 10, 2009 | 1,062 | 22.7 | 44.5 | Lake Erie | 23 | 18 |
| January 10, 2008 | 2,154 | -50.7 | 90.3 | Detroit | 24 | 28 |
| January 3, 2009 | 866 | 8.3 | 36.3 | Indiana/Chicago | 291 | 257 |
| | | | | Midwest | 96 | 106 |
| Year-to-Date+ | | | | Southern | 412 | 226 |
| | | | | Western | 44 | 42 |
| January 10, 2009 | 1,434 | -53.4 | 42.0 | Total | 1,062 | 866 |
| January 10, 2008 | 3,075 | - | 90.3 | | | |

*Raw steel production tonnage included in this report is estimated based on a sampling of steel producers. Therefore, this report should be used primarily to assess production trends. The AISI production report "AIS 7," produced monthly and available by subscription, provides a more accurate summary of steel production based on data supplied by companies representing approximately 75% of U.S. production capacity.

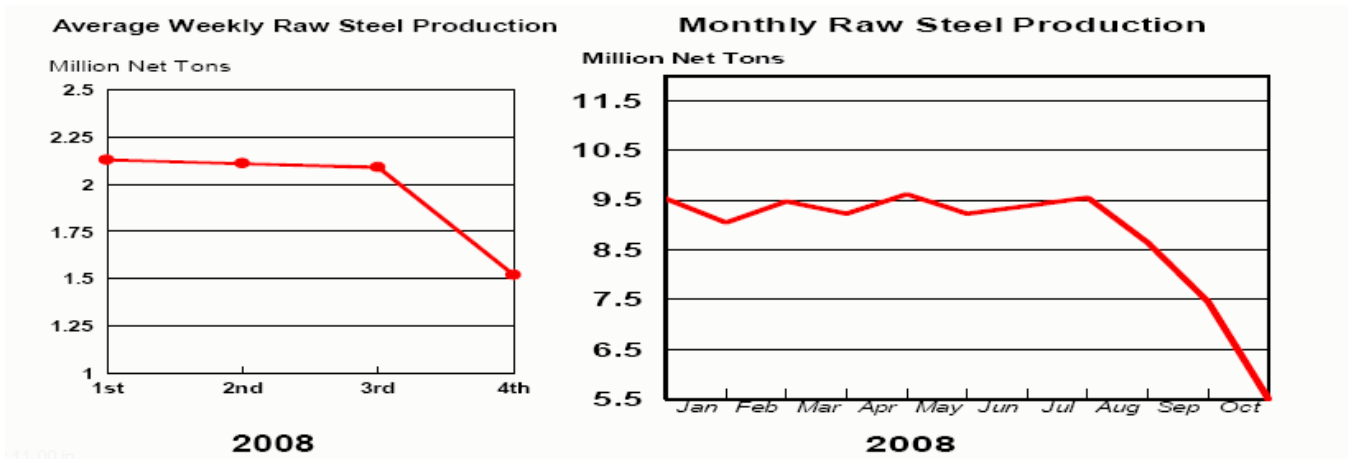
+ Includes revisions for previous months

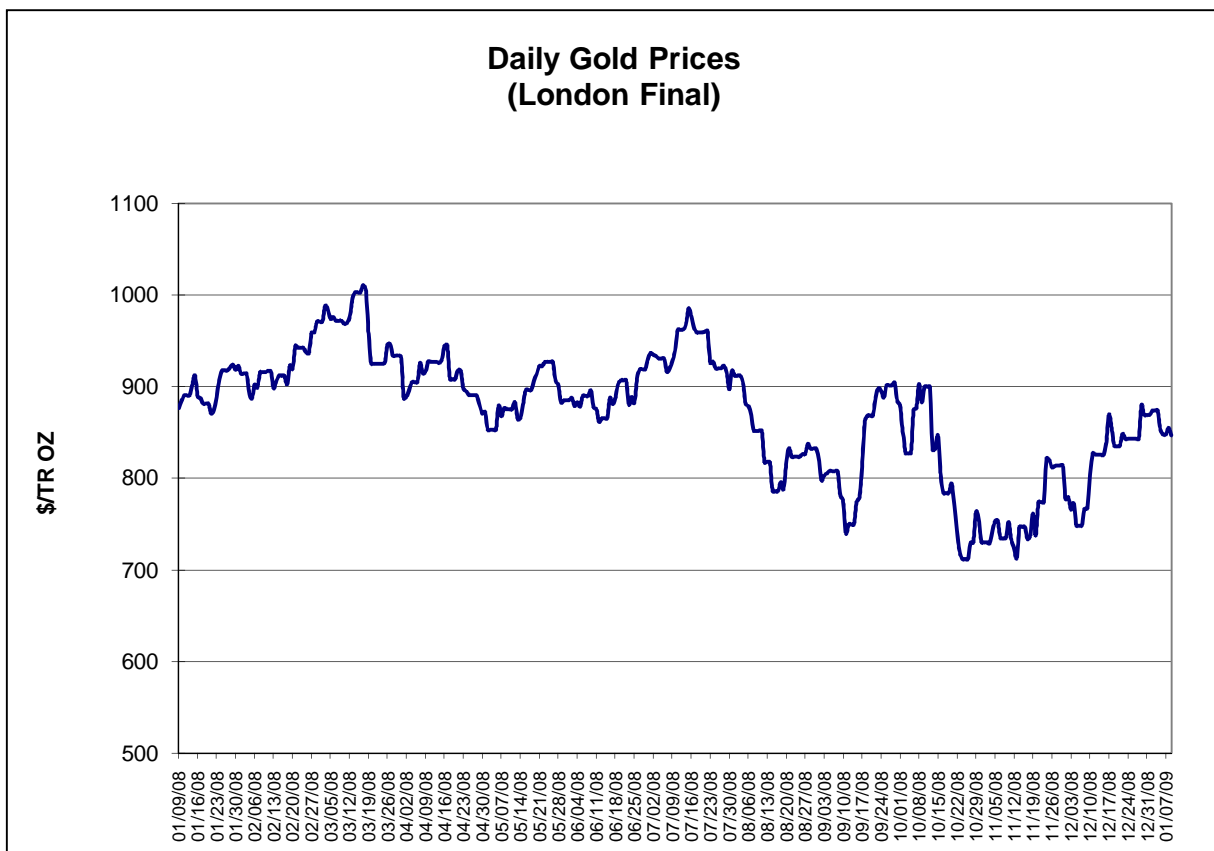
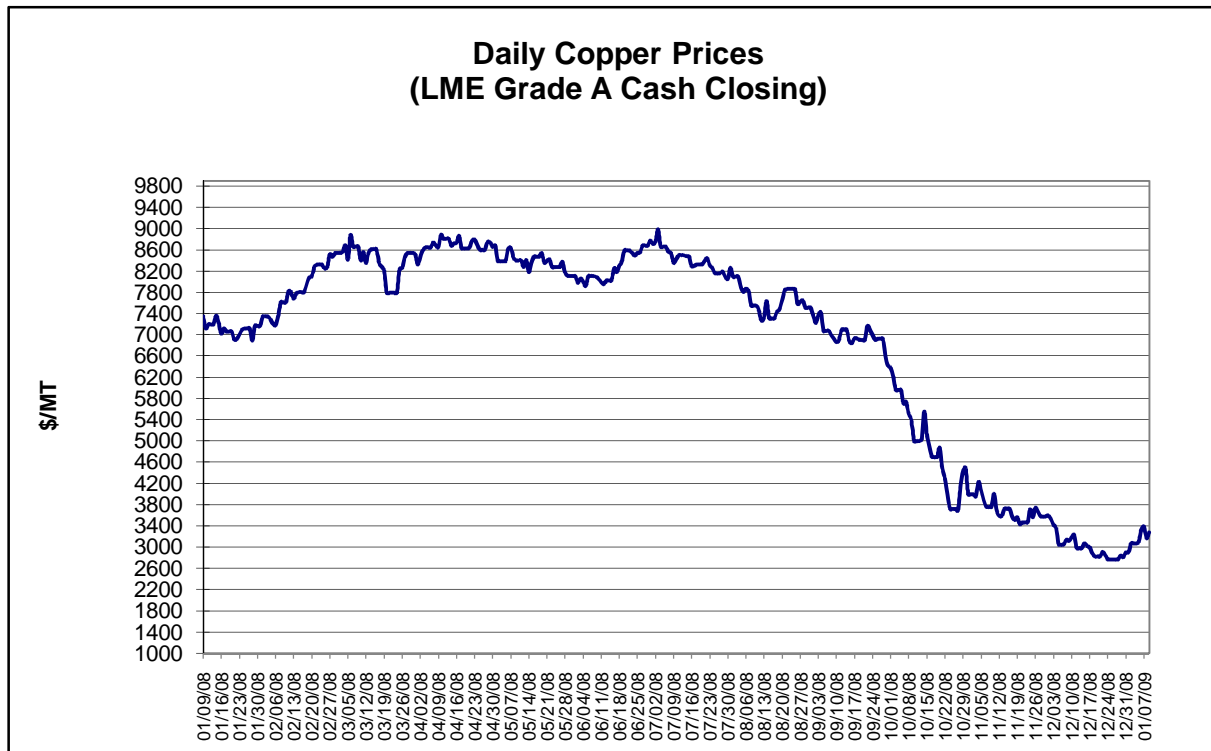
NOTE: Capability for the Third Quarter 2008 is approximately 31.4 million net tons vs 30.1 million net tons for the same period last year, and 31.0 million tons for the second quarter of 2008.

| | | |
|--------------|--------------|-----------------------|
| Capability - | 2004 approx. | 2.2 million tons/week |
| | 2005 | 2.3 |
| | 2006 | 2.4 |
| | 2007 | 2.4 |
| | 2008 | 2.4 |

*Steel in the first solid state after melting suitable for further processing or sale, including ingots, steel for castings and strand or pressure cast blooms, slabs, or other product forms.

** Based on tonnage capability to produce raw steel for a sustained full order book.

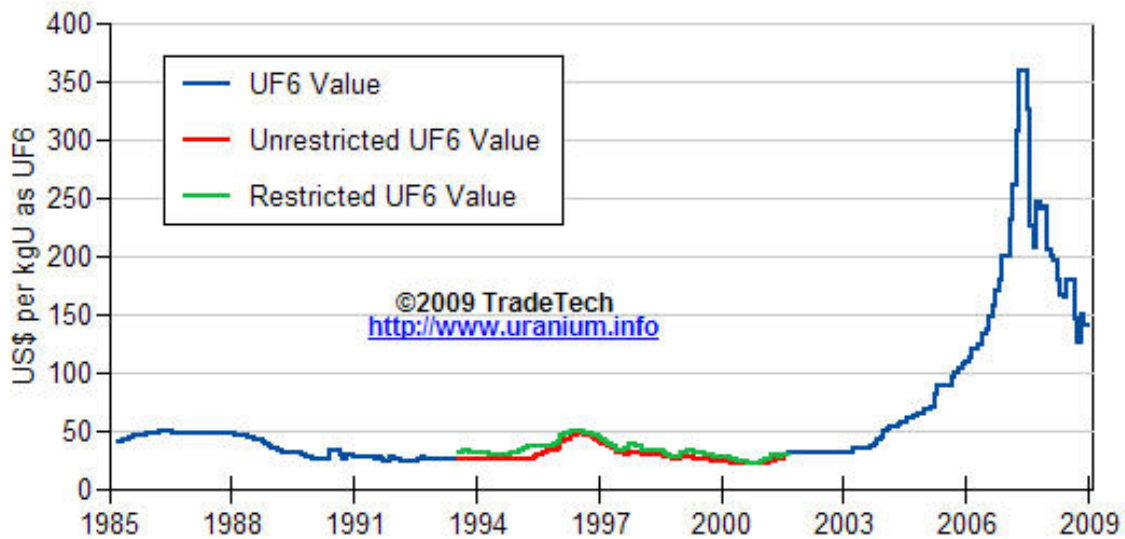




Data reflect closings on weekends and holidays.

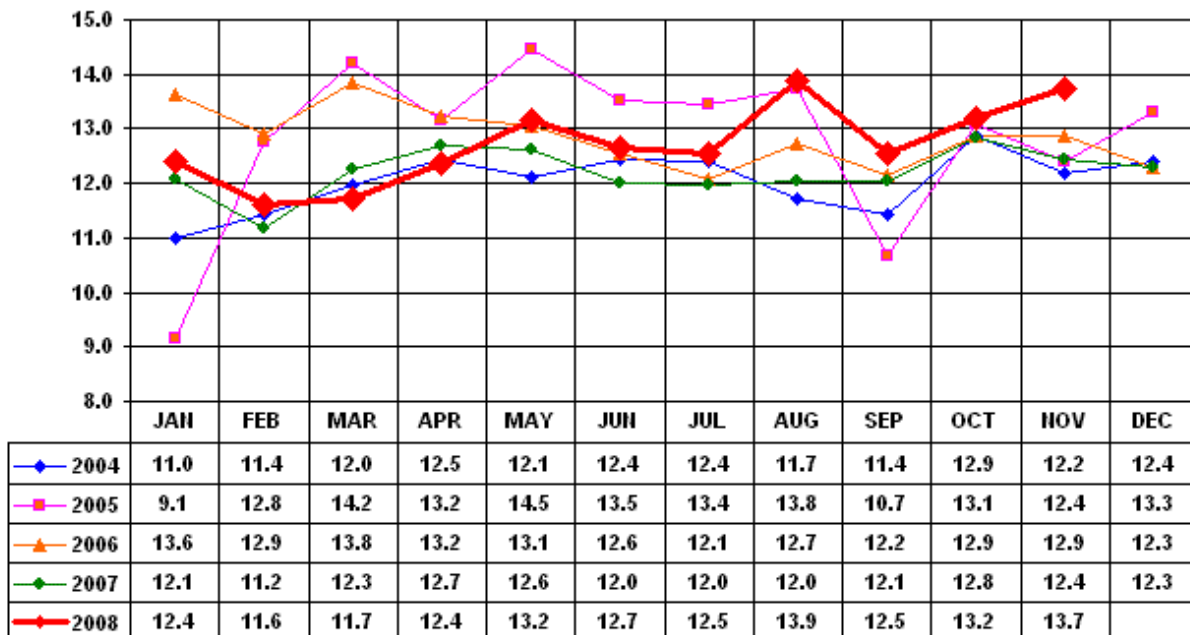
Source: Platts Metals Week

Trade Tech's Uranium (UF6) Monthly Spot Prices (US\$/kg as UF6)



Source: Trade Tech, Uranium Info Website – <http://www.uranium.info>

Coal and Coke Monthly Tonnage Indicator for Internal U.S. Waterways

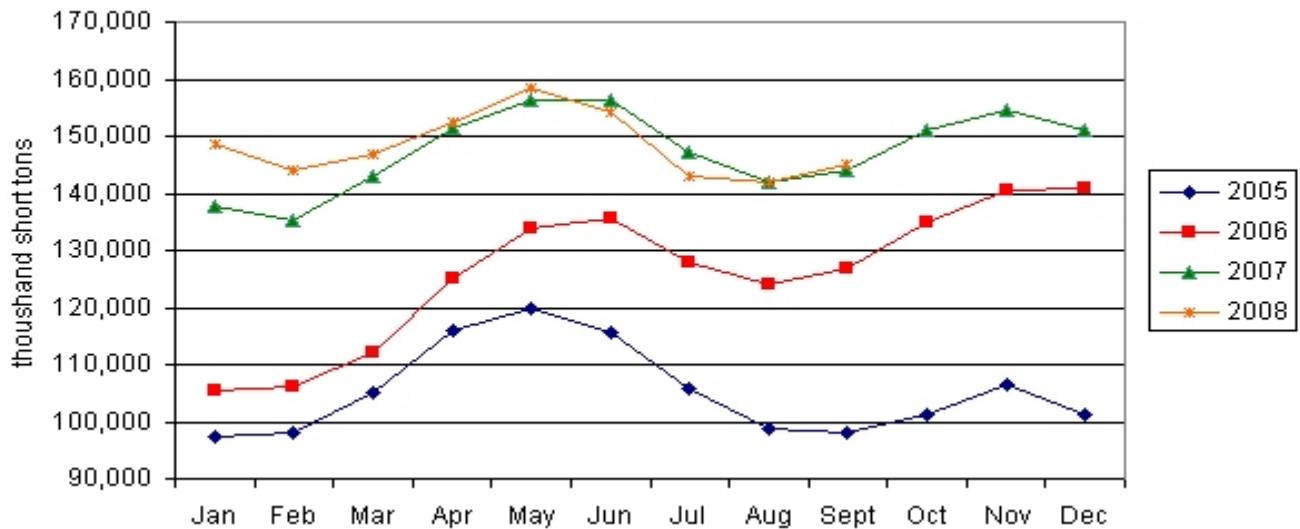


Source: U.S. Army Corps of Engineers, Waterborne Commerce Statistics Center

| Average Weekly Coal Commodity Spot Prices (Dollars per Short Ton) | | | | | |
|--|--|--|--|---|---------------------------------------|
| Week Ended | Central Appalachia 12,500 Btu, 1.2 SO2 | Northern Appalachia 13,000 Btu, <3.0 SO2 | Illinois Basin 11,800 Btu, 5.0 SO2 | Powder River Basin 8,800 Btu, 0.8 SO2 | Uinta Basin 11,700 Btu, 0.8 SO2 |
| 07-Nov-08 | \$119.25 | \$111.50 | \$84.00 | \$14.50 | \$73.00 |
| 14-Nov-08 | \$111.15 | \$111.50 | \$84.00 | \$14.50 | \$73.00 |
| 21-Nov-08 | \$111.15 | \$111.50 | \$84.00 | \$14.50 | \$73.00 |
| 28-Nov-08 | \$111.15 | \$101.50 | \$83.00 | \$14.50 | \$73.00 |
| 05-Dec-08 | \$89.80 | \$101.50 | \$78.00 | \$12.50 | \$73.00 |
| 12-Dec-08 | \$81.55 | \$101.50 | \$78.00 | \$12.50 | \$73.00 |
| 19-Dec-08 | \$81.55 | \$101.50 | \$78.00 | \$13.00 | \$73.00 |
| 2-Jan-09 | \$80.85 | \$88.75 | \$78.00 | \$13.00 | \$73.00 |
| 9-Jan-09 | \$76.80 | \$76.00 | \$78.00 | \$13.00 | \$73.00 |

Source: Energy Information Administration (from Platts *Coal Outlook*, "Weekly Price Survey")

EIA Electric Power Sector Coal Stocks



Source: Energy Information Administration, *Coal News and Markets Report*

| USGS Production of Selected Mineral Commodities | 2008 Year to Date - 3rd Quarter | 2007 Year to Date - 3rd Quarter | Percent Change |
|--|--|--|-----------------------|
| Aluminum, secondary (000 Mt.) | 729.0 | 708.0 | 3% |
| Cement (Mil. Mt.) | 65.6 | 70.0 | -6% |
| Gypsum (Mil. Mt.) | 14.1 | 16.4 | -14% |
| Iron Ore (Mil. Mt.) | 40.9 | 38.6 | 6% |
| Phosphate rock (Mil. Mt.) | 23.0 | 22.1 | 4% |
| Sand & gravel, construction (Mil. Mt.) | 754.0 | 940.0 | -20% |
| Soda ash (Mil. Mt.) | 8.4 | 8.3 | 1% |
| Stone, crushed (Mil. Mt.) | 1,020.0 | 1,220.0 | -16% |
| Zinc (000 Mt.) | 628.0 | 574.0 | 9% |

Source: U.S. Geological Survey, Mineral Industry Surveys, *U.S. Production of Selected Mineral Commodities in the Third Quarter 2008, November 2008*

| AAR U.S. Rail Traffic for Selected Commodities - Carloadings (000) | 2008 Year to Date - Dec. 27 | 2007 Year to Date - Dec. 27 | Percent Change |
|---|------------------------------------|------------------------------------|-----------------------|
| Agricultural Products | 2,161 | 2,151 | 0.5% |
| Chemicals | 1,850 | 1,903 | -2.8% |
| Coal | 7,466 | 7,215 | 3.5% |
| Forest Products | 657 | 743 | -11.6% |
| Metallic Ores & Metals | 1,169 | 1,291 | -9.5% |
| Motor Vehicles & Equipment | 814 | 1,034 | -21.3% |
| Non-metallic Minerals & Products | 1,693 | 1,853 | -8.6% |

Source: Association of American Rainroads, *Weekly Railroad Traffic*