
National Mining Association

Weekly Statistical Summary

November 7, 2008 Edition
(Data for Week Ending November 1, 2008)

Prepared by
National Mining Association



Suite 500 East, 101 Constitution Avenue, NW
Washington, DC, 20001
Phone (202) 463-2600
Visit us at <http://www.nma.org>

NMA Weekly Statistical Summary

Vol. 46, No. 44
Dated 11/07/08

| PRODUCTION, CONSUMPTION & TRADE | | | | | | |
|--|---------------|-----------|--------|---------------------------|-----------|--------|
| | Week Ended | | | * Cumulative Jan 1 to | | |
| | 11/01/08 | 11/03/07 | % Chng | 11/01/08 | 11/01/07 | % Chng |
| EIA Coal Production (000 Tons): | | | | | | |
| Week Ended/Year to Date | 22,804 | 21,834 | 4.4% | 975,894 | 960,268 | 1.6% |
| 52 Weeks Ended | 1,156,865 | 1,145,043 | 1.0% | | | |
| * Due to leap year, 2008 cumulative reflects one extra day of tonnage. | | | | | | |
| | October 08/07 | | % Chng | Jan - Oct 08/07 | | % Chng |
| Month Ended -- October | 103,886 | 98,825 | 5.1% | 974,150 | 956,588 | 1.8% |
| MONTH ENDED AND CUMULATIVE NUMBERS ARE PRELIMINARY AND SUBJECT TO CHANGE | | | | | | |
| DOC Bituminous Coal Trade (000 Tons) | | | | | | |
| | Aug 08/07 | | % Chng | Jan - Aug 08/07 | | % Chng |
| Exports: | | | | | | |
| Metallurgical | 2,881 | 3,237 | -11.0% | 27,489 | 21,125 | 30.1% |
| Steam | 2,351 | 2,172 | 8.2% | 22,690 | 15,697 | 44.5% |
| Imports: | 3,144 | 3,716 | -15.4% | 22,335 | 24,280 | -8.0% |
| | Week Ended | | | * Cumulative Jan 1 to | | |
| | 11/01/08 | 11/03/07 | % Chng | 11/01/08 | 11/03/07 | % Chng |
| EEl Electric Output (Mil. Kwh) | 70,879 | 70,822 | 0.1% | 3,457,271 | 3,491,543 | -1.0% |
| AISI Raw Steel Output (000 Tons) | 1,605 | 2,112 | -24.0% | 90,446 | 90,460 | 0.0% |
| EIA U.S. PETROLEUM DATA | | | | | | |
| 4-Week Averages | | | | | | |
| 000 Barrels per Day | | | | | | |
| | Week Ending | | | Cumulative Daily Averages | | |
| | 10/31/08 | 10/31/07 | % Chng | 2008 | 2007 | % Chng |
| PETROLEUM SUPPLY: | | | | | | |
| Domestic Crude | 4,663 | 5,043 | -7.5 | 4,948 | 5,070 | -2.4 |
| Net Imports (Incl. SPR) | 10,191 | 9,722 | 4.8 | 9,773 | 10,019 | -2.5 |
| SPR Stocks W/D or Added | 21 | -43 | -- | -16 | -18 | -- |
| Other Stocks W/D or added | -334 | 125 | -- | -85 | 16 | -- |
| Natural Gas Liquids Prod. | 2,313 | 2,449 | -5.6 | 2,258 | 2,382 | -5.2 |



NMA

THE AMERICAN RESOURCE National Mining Association Web Site: [http:// www.nma.org](http://www.nma.org)

EIA Estimated Weekly U.S. Coal Production Overview (Thousand Short Tons)

| Coal-Producing Region and State | Week Ended | | | Year to Date | | | 52 Weeks Ended | | |
|------------------------------------|---------------|---------------|---------------|----------------|----------------|-------------------|------------------|------------------|-------------------|
| | 11/1/2008 | 10/25/2008 | 11/3/2007 | 11/1/2008 | 11/1/2007 | Percent Change | 11/1/2008 | 11/3/2007 | Percent Change |
| Alabama | 397 | 411 | 369 | 17,336 | 16,380 | 5.8 | 20,403 | 19,127 | 6.7 |
| Alaska | 26 | 27 | 28 | 1,178 | 1,099 | 7.2 | 1,397 | 1,337 | 4.5 |
| Arizona | 154 | 160 | 135 | 6,396 | 6,814 | -6.1 | 7,538 | 8,067 | -6.6 |
| Arkansas | 1 | 1 | 2 | 49 | 68 | -27.7 | 63 | 74 | -14.6 |
| Colorado | 685 | 709 | 667 | 30,257 | 30,611 | -1.2 | 35,854 | 36,354 | -1.4 |
| Illinois | 595 | 616 | 501 | 25,809 | 28,585 | -9.7 | 29,968 | 33,718 | -11.1 |
| Indiana | 717 | 743 | 634 | 29,821 | 29,535 | 1.0 | 35,149 | 35,055 | 0.3 |
| Kansas | 6 | 6 | 8 | 254 | 356 | -28.7 | 317 | 446 | -29.0 |
| Kentucky Total | 2,202 | 2,280 | 2,117 | 100,622 | 97,416 | 3.3 | 118,283 | 115,143 | 2.7 |
| Eastern | 1,643 | 1,700 | 1,588 | 75,830 | 73,681 | 2.9 | 89,079 | 87,150 | 2.2 |
| Western | 560 | 579 | 529 | 24,792 | 23,735 | 4.5 | 29,203 | 27,992 | 4.3 |
| Louisiana | 81 | 95 | 87 | 3,281 | 2,393 | 37.1 | 3,992 | 3,110 | 28.4 |
| Maryland | 56 | 58 | 48 | 1,986 | 1,936 | 2.6 | 2,341 | 2,354 | -0.6 |
| Mississippi | 54 | 60 | 63 | 2,614 | 3,079 | -15.1 | 3,064 | 3,645 | -15.9 |
| Missouri | 6 | 6 | 5 | 191 | 198 | -3.2 | 229 | 244 | -6.3 |
| Montana | 880 | 911 | 893 | 35,919 | 35,573 | 1.0 | 43,493 | 42,338 | 2.7 |
| New Mexico | 608 | 630 | 470 | 21,254 | 20,477 | 3.8 | 25,129 | 24,678 | 1.8 |
| North Dakota | 583 | 604 | 558 | 24,255 | 24,835 | -2.3 | 28,914 | 29,735 | -2.8 |
| Ohio | 478 | 495 | 438 | 20,910 | 18,774 | 11.4 | 24,615 | 22,235 | 10.7 |
| Oklahoma | 35 | 36 | 30 | 1,286 | 1,396 | -7.9 | 1,531 | 1,672 | -8.4 |
| Pennsylvania Total | 1,223 | 1,266 | 1,178 | 55,394 | 55,120 | 0.5 | 65,216 | 65,093 | 0.2 |
| Anthracite | 21 | 22 | 31 | 1,213 | 1,306 | -7.1 | 1,469 | 1,543 | -4.8 |
| Bituminous | 1,202 | 1,245 | 1,147 | 54,181 | 53,814 | 0.7 | 63,748 | 63,550 | 0.3 |
| Tennessee | 52 | 54 | 51 | 2,124 | 2,219 | -4.3 | 2,549 | 2,626 | -2.9 |
| Texas | 747 | 773 | 818 | 32,008 | 34,901 | -8.3 | 38,828 | 42,018 | -7.6 |
| Utah | 463 | 479 | 498 | 20,168 | 20,097 | 0.4 | 24,271 | 24,312 | -0.2 |
| Virginia | 515 | 533 | 405 | 20,493 | 22,079 | -7.2 | 23,786 | 26,447 | -10.1 |
| Washington | -- | -- | -- | -- | -- | -- | 0 | 151 | -100.0 |
| West Virginia Total | 3,099 | 3,208 | 2,771 | 135,184 | 129,686 | 4.2 | 158,410 | 152,335 | 4.0 |
| Northern | 805 | 834 | 731 | 35,081 | 35,969 | -2.5 | 41,173 | 41,989 | -1.9 |
| Southern | 2,294 | 2,375 | 2,040 | 100,102 | 93,718 | 6.8 | 117,237 | 110,346 | 6.2 |
| Wyoming | 9,142 | 9,150 | 9,061 | 387,106 | 376,640 | 2.8 | 461,524 | 452,730 | 1.9 |
| Appalachian Total | 7,462 | 7,724 | 6,849 | 329,257 | 319,876 | 2.9 | 386,400 | 377,367 | 2.4 |
| Interior Total | 2,801 | 2,914 | 2,677 | 120,104 | 124,246 | -3.3 | 142,345 | 147,973 | -3.8 |
| Western Total | 12,542 | 12,670 | 12,309 | 526,533 | 516,146 | 2.0 | 628,120 | 619,703 | 1.4 |
| East of Miss. River | 9,387 | 9,721 | 8,577 | 412,292 | 404,810 | 1.8 | 483,784 | 477,777 | 1.3 |
| West of Miss. River | 13,417 | 13,586 | 13,257 | 563,602 | 555,458 | 1.5 | 673,080 | 667,266 | 0.9 |
| Bituminous and Lignite | 22,783 | 23,286 | 21,803 | 974,682 | 958,962 | 1.6 | 1,155,396 | 1,143,500 | 1.0 |
| Anthracite | 21 | 22 | 31 | 1,213 | 1,306 | -7.1 | 1,469 | 1,543 | -4.8 |
| U.S. Total | 22,804 | 23,308 | 21,834 | 975,894 | 960,268 | 1.6 | 1,156,865 | 1,145,043 | 1.0 |
| Railroad Cars Loaded | 151,751 | 156,712 | 145,069 | 6,488,595 | 6,261,838 | 3.6 | 7,630,789 | 7,397,018 | 3.2 |

Source: Energy Information Administration

EIA Estimated Weekly and Monthly U.S. Coal Production Overview (Thousand Short Tons)

| Coal-Producing Region and State | Week Ended | | Year to Date | | Month Ended | | January - October | | Percent Change |
|------------------------------------|---------------|---------------|----------------|----------------|----------------|-----------------|-------------------|----------------|-------------------|
| | 11/1/2008 | 11/3/2007 | 11/1/2008 | 11/1/2007 | October 2008 | October 2007 | 2008 | 2007 | |
| Alabama | 397 | 369 | 17,336 | 16,380 | 1,850 | 1,774 | 17,334 | 16,307 | 6.3 |
| Alaska | 26 | 28 | 1,178 | 1,099 | 124 | 127 | 1,178 | 1,093 | 7.8 |
| Arizona | 154 | 135 | 6,396 | 6,814 | 725 | 671 | 6,396 | 6,787 | -5.8 |
| Arkansas | 1 | 2 | 49 | 68 | 5 | 6 | 49 | 68 | -27.4 |
| Colorado | 685 | 667 | 30,257 | 30,611 | 3,193 | 3,114 | 30,184 | 30,506 | -1.1 |
| Illinois | 595 | 501 | 25,809 | 28,585 | 2,758 | 2,285 | 25,785 | 28,492 | -9.5 |
| Indiana | 717 | 634 | 29,821 | 29,535 | 3,322 | 2,954 | 29,797 | 29,417 | 1.3 |
| Kansas | 6 | 8 | 254 | 356 | 27 | 35 | 254 | 354 | -28.4 |
| Kentucky Total | 2,202 | 2,117 | 100,622 | 97,416 | 10,358 | 9,834 | 100,571 | 97,012 | 3.7 |
| Eastern | 1,643 | 1,588 | 75,830 | 73,681 | 7,754 | 7,451 | 75,804 | 73,374 | 3.3 |
| Western | 560 | 529 | 24,792 | 23,735 | 2,604 | 2,383 | 24,766 | 23,639 | 4.8 |
| Louisiana | 81 | 87 | 3,281 | 2,393 | 403 | 329 | 3,273 | 2,379 | 37.6 |
| Maryland | 56 | 48 | 1,986 | 1,936 | 251 | 263 | 1,985 | 1,927 | 3.0 |
| Mississippi | 54 | 63 | 2,614 | 3,079 | 150 | 308 | 2,608 | 3,069 | -15.0 |
| Missouri | 6 | 5 | 191 | 198 | 26 | 24 | 191 | 197 | -2.7 |
| Montana | 880 | 893 | 35,919 | 35,573 | 3,971 | 3,963 | 35,814 | 35,437 | 1.1 |
| New Mexico | 608 | 470 | 21,254 | 20,477 | 2,769 | 2,204 | 21,242 | 20,386 | 4.2 |
| North Dakota | 583 | 558 | 24,255 | 24,835 | 2,722 | 2,496 | 24,255 | 24,724 | -1.9 |
| Ohio | 478 | 438 | 20,910 | 18,774 | 2,212 | 2,096 | 20,893 | 18,692 | 11.8 |
| Oklahoma | 35 | 30 | 1,286 | 1,396 | 164 | 142 | 1,286 | 1,390 | -7.5 |
| Pennsylvania Total | 1,223 | 1,178 | 55,394 | 55,120 | 5,737 | 5,422 | 55,374 | 54,892 | 0.9 |
| Anthracite | 21 | 31 | 1,213 | 1,306 | 100 | 134 | 1,213 | 1,300 | -6.7 |
| Bituminous | 1,202 | 1,147 | 54,181 | 53,814 | 5,637 | 5,289 | 54,161 | 53,592 | 1.1 |
| Tennessee | 52 | 51 | 2,124 | 2,219 | 243 | 252 | 2,124 | 2,209 | -3.8 |
| Texas | 747 | 818 | 32,008 | 34,901 | 3,401 | 3,779 | 31,911 | 34,780 | -8.2 |
| Utah | 463 | 498 | 20,168 | 20,097 | 2,161 | 2,301 | 20,157 | 20,003 | 0.8 |
| Virginia | 515 | 405 | 20,493 | 22,079 | 2,367 | 1,905 | 20,475 | 22,004 | -6.9 |
| Washington | -- | -- | -- | -- | -- | -- | -- | -- | -- |
| West Virginia Total | 3,099 | 2,771 | 135,184 | 129,686 | 14,418 | 12,800 | 135,081 | 129,169 | 4.6 |
| Northern | 805 | 731 | 35,081 | 35,969 | 3,750 | 3,415 | 35,058 | 35,831 | -2.2 |
| Southern | 2,294 | 2,040 | 100,102 | 93,718 | 10,668 | 9,386 | 100,023 | 93,338 | 7.2 |
| Wyoming | 9,142 | 9,061 | 387,106 | 376,640 | 40,529 | 39,742 | 385,933 | 375,293 | 2.8 |
| Appalachian Total | 7,462 | 6,849 | 329,257 | 319,876 | 34,831 | 31,962 | 329,070 | 318,573 | 3.3 |
| Interior Total | 2,801 | 2,677 | 120,104 | 124,246 | 12,861 | 12,244 | 119,921 | 123,786 | -3.1 |
| Western Total | 12,542 | 12,309 | 526,533 | 516,146 | 56,194 | 54,618 | 525,159 | 514,229 | 2.1 |
| East of Miss. River | 9,387 | 8,577 | 412,292 | 404,810 | 43,665 | 39,892 | 412,027 | 403,191 | 2.2 |
| West of Miss. River | 13,417 | 13,257 | 563,602 | 555,458 | 60,220 | 58,932 | 562,123 | 553,397 | 1.6 |
| Bituminous and Lignite | 22,783 | 21,803 | 974,682 | 958,962 | 103,786 | 98,691 | 972,937 | 955,288 | 1.8 |
| Anthracite | 21 | 31 | 1,213 | 1,306 | 100 | 134 | 1,213 | 1,300 | -6.7 |
| U.S. Total | 22,804 | 21,834 | 975,894 | 960,268 | 103,886 | 98,825 | 974,150 | 956,588 | 1.8 |
| Railroad Cars Loaded | 151,751 | 145,069 | 6,488,595 | 6,261,838 | -- | -- | -- | -- | -- |

Source: Energy Information Administration



Volume 76 No. 44

OUTPUT FOR WEEK ENDED - Nov 01, 2008

Nov 05, 2008

The net available amount of electric energy distributed by the Total Electric Utility Industry+ for the week ended Saturday, **Nov 01, 2008** was **70,879** gigawatthours (GWh), according to the Edison Electric Institute. This is equivalent to **179** on the weekly electric output index.

WEEKLY ELECTRIC OUTPUT BY GEOGRAPHIC DIVISION
(48 CONTIGUOUS STATES)

| | Week Ended November 01 | | 52 Weeks Ended November 01 | |
|---------------------|------------------------|--|----------------------------|--|
| | GWh Output | % Increase Over Corresponding Week of 2007 | GWh Output | % Increase Over Corresponding Period of 2007 |
| New England | 2,319 | -1.6 | 131,609 | -1.4 |
| Mid-Atlantic | 7,962 | 1.4 | 451,718 | -0.8 |
| Central Industrial | 12,540 | -0.3 | 708,425 | -1.5 |
| West Central | 6,011 | 0.5 | 345,535 | -1.5 |
| Southeast | 18,683 | -3.4 | 1,090,088 | -1.2 |
| South Central | 9,546 | 0.4 | 603,129 | 0.9 |
| Rocky Mountain | 5,318 | 0.3 | 276,998 | 0.9 |
| Pacific Northwest | 3,028 | -2.6 | 167,740 | 6.2 |
| Pacific Southwest | 5,472 | 14.3 | 291,098 | -0.6 |
| Total United States | 70,879 | 0.1 | 4,066,340 | -0.4 |

WEEKLY ELECTRIC OUTPUT IN PREVIOUS WEEKS--GWh

| Week Ended | 2008 | Week Ended | 2007 | % Inc. (08/07) | 52 Weeks Ended | 2008 | % Inc. (08/07) |
|---------------|------------------|---------------|------------------|----------------|-------------------------------------|-----------|----------------|
| Oct 11 | 72,660 | Oct 13 | 77,585 | -6.3 | Oct 11 | 4,068,680 | -0.3 |
| Oct 18 | 72,773 | Oct 20 | 73,975 | -1.6 | Oct 18 | 4,067,478 | -0.4 |
| Oct 25 | 72,073 | Oct 27 | 73,267 | -1.6 | Oct 25 | 4,066,283 | -0.5 |
| Nov 01 | 70,879 | Nov 03 | 70,822 | 0.1 | Nov 01 | 4,066,340 | -0.4 |
| Nov 01 | 3,457,271 | Nov 03 | 3,491,543 | -1.0 | YEAR TO DATE, FIRST 44 WEEKS | | |

WEEKLY ELECTRIC OUTPUT INDEX--TOTAL U.S.*
SEASONALLY ADJUSTED 1982 = 100

| Week Ended | 2008 | Week Ended | 2007 | Week Ended | 2006 |
|------------|------|------------|------|------------|------|
| Oct 11 | 181 | Oct 13 | 192 | Oct 14 | 172 |
| Oct 18 | 184 | Oct 20 | 186 | Oct 21 | 178 |
| Oct 25 | 183 | Oct 27 | 185 | Oct 28 | 180 |
| Nov 01 | 179 | Nov 03 | 177 | Nov 04 | 176 |

* Excludes Alaska and Hawaii

+ Includes investor-owned companies, cooperatives and government-owned utilities.

Copyright © 2008 Edison Electric Institute. All rights reserved.

WEEKLY ELECTRIC OUTPUT BY GEOGRAPHIC DIVISION (48 CONTIGUOUS STATES)

| | Week Ended | | | NMA CUMULATIVE JANUARY WEEK ONE TO | | | 52 Weeks Ended | | |
|------------------------------|--------------------------------|--------------------------------|--|------------------------------------|--------------------------------|--|--------------------------------|--------------------------------|--|
| | 1-Nov 2008 GWh Output | 3-Nov 2007 GWh Output | % Increase Over Corresponding Week of 2007 | 1-Nov 2008 GWh Output | 3-Nov 2007 GWh Output | % Increase Over Corresponding Week of 2007 | 1-Nov 2008 GWh Output | 3-Nov 2007 GWh Output | % Increase Over Corresponding Week of 2007 |
| New England | 2,319 | 2,357 | -1.6% | 110,934 | 113,771 | -2.5% | 131,609 | 133,538 | -1.4% |
| Mid-Atlantic | 7,962 | 7,849 | 1.4% | 382,739 | 389,686 | -1.8% | 451,718 | 455,203 | -0.8% |
| Central Industrial | 12,540 | 12,583 | -0.3% | 598,852 | 612,564 | -2.2% | 708,425 | 718,941 | -1.5% |
| West Central | 6,011 | 5,980 | 0.5% | 293,005 | 299,685 | -2.2% | 345,535 | 350,843 | -1.5% |
| Southeast | 18,683 | 19,348 | -3.4% | 927,771 | 944,342 | -1.8% | 1,090,088 | 1,103,257 | -1.2% |
| South Central | 9,546 | 9,506 | 0.4% | 520,617 | 515,624 | 1.0% | 603,129 | 597,597 | 0.9% |
| Rocky Mountain | 5,318 | 5,303 | 0.3% | 233,611 | 234,044 | -0.2% | 276,998 | 274,442 | 0.9% |
| Pacific Northwest | 3,028 | 3,109 | -2.6% | 139,408 | 130,747 | 6.6% | 167,740 | 157,896 | 6.2% |
| Pacific Southwest | 5,472 | 4,787 | 14.3% | 250,336 | 251,079 | -0.3% | 291,098 | 292,978 | -0.6% |
| Total United States * | <u>70,879</u> | <u>70,822</u> | 0.1% | <u>3,457,273</u> | <u>3,491,542</u> | -1.0% | <u>4,066,340</u> | <u>4,084,695</u> | -0.4% |

Notes: EEI output data are an estimate of electricity load made available for distribution derived as weekly net generation + purchases from non-utilities + net imports - exports - sales for resale. It is not meant to be a measure of electricity generation for the U.S. EEI survey data represent the majority of national distribution (large utilities, large government power projects, some independent and large municipal power projects). The remaining segment of the industry (smaller producers) is estimated. Non-utility generation is captured via direct sales to utilities.

* Excludes Alaska and Hawaii

** Less than one-tenth of one percent

SOURCE: Edison Electric Institute (EEI), *Weekly Electric Output Report*.

AMERICAN IRON AND STEEL INSTITUTE
 1140 Connecticut Avenue, Suite 705
 Washington, D.C. 20036

November 3, 2008

ESTIMATED WEEKLY RAW STEEL* PRODUCTION

| Period | Thousand Net Tons | Percent Change from Previous Period | Percent Capability Utilization** | Production by District | |
|--------------------|-------------------|-------------------------------------|----------------------------------|------------------------|--------------|
| | | | | Nov. 1 | Oct. 25 |
| Week Ending | | | | | |
| November 1, 2008 | 1,605 | -4.5 | 67.3 | 136 | 132 |
| November 1, 2007 | 2,112 | -24.0 | 88.5 | 167 | 170 |
| October 25, 2008 | 1,680 | -3.7 | 70.4 | 38 | 71 |
| | | | | 66 | 73 |
| | | | | 346 | 377 |
| | | | | 234 | 231 |
| | | | | 545 | 555 |
| | | | | 73 | 71 |
| | | | | Total | 1,605 |
| | | | | | 1,680 |

*Raw steel production tonnage included in this report is estimated based on a sampling of steel producers. Therefore, this report should be used primarily to assess production trends. The AISI production report "AISI 7," produced monthly and available by subscription, provides a more accurate summary of steel production based on data supplied by companies representing approximately 75% of U.S. production capacity.

+ Includes revisions for previous months

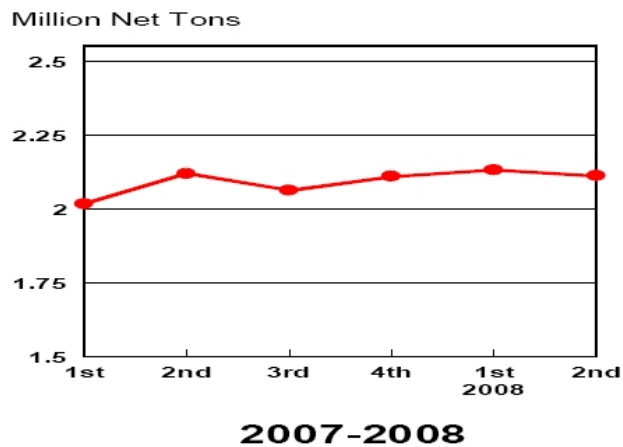
NOTE: Capability for the Third Quarter 2008 is approximately 31.4 million net tons vs 30.1 million net tons for the same period last year, and 31.0 million tons for the second quarter of 2008.

| | | |
|--------------|--------------|-----------------------|
| Capability - | 2004 approx. | 2.2 million tons/week |
| | 2005 | 2.3 |
| | 2006 | 2.4 |
| | 2007 | 2.4 |
| | 2008 | 2.4 |

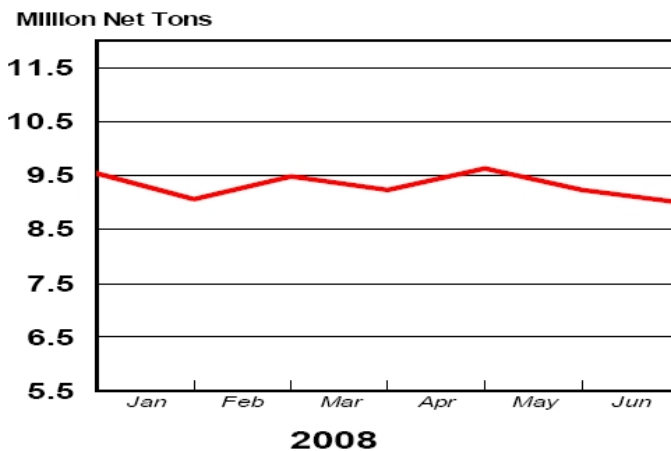
*Steel in the first solid state after melting suitable for further processing or sale, including ingots, steel for castings and strand or pressure cast blooms, slabs, or other product forms.

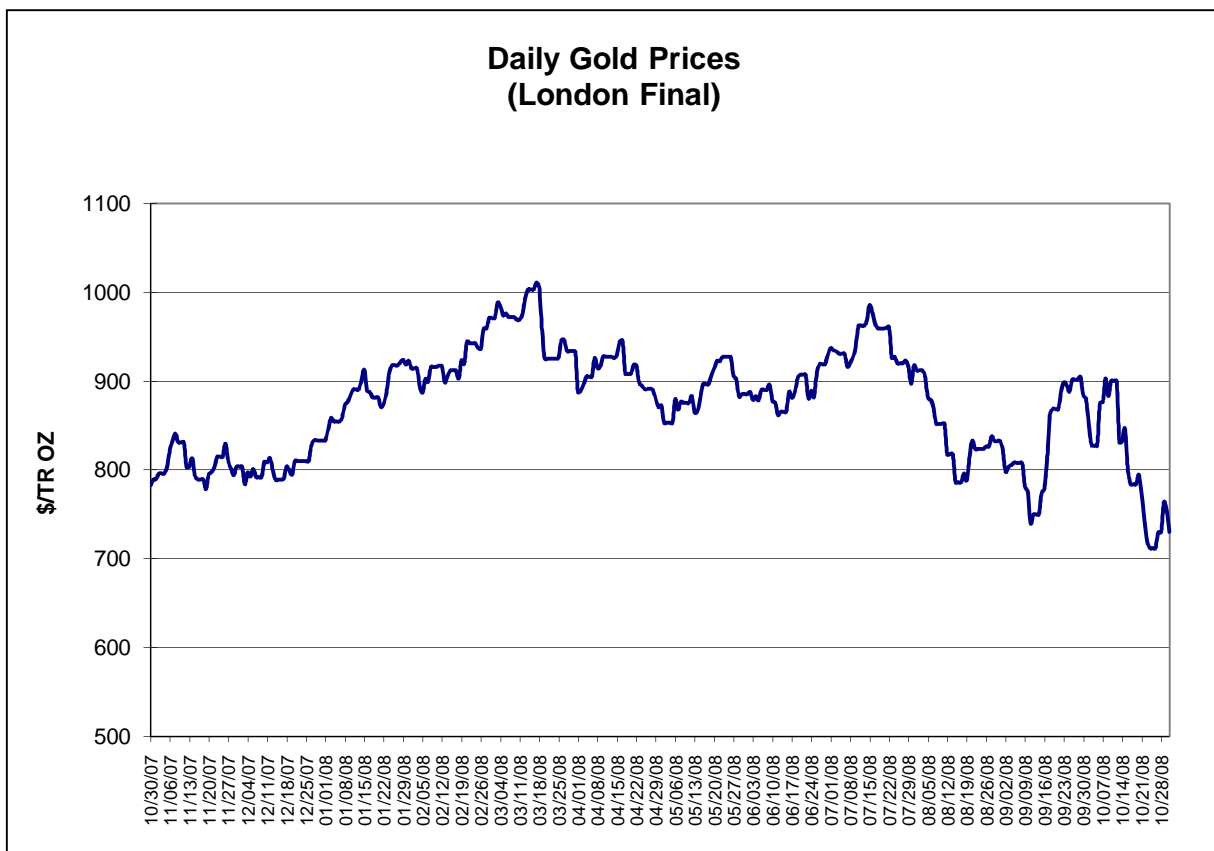
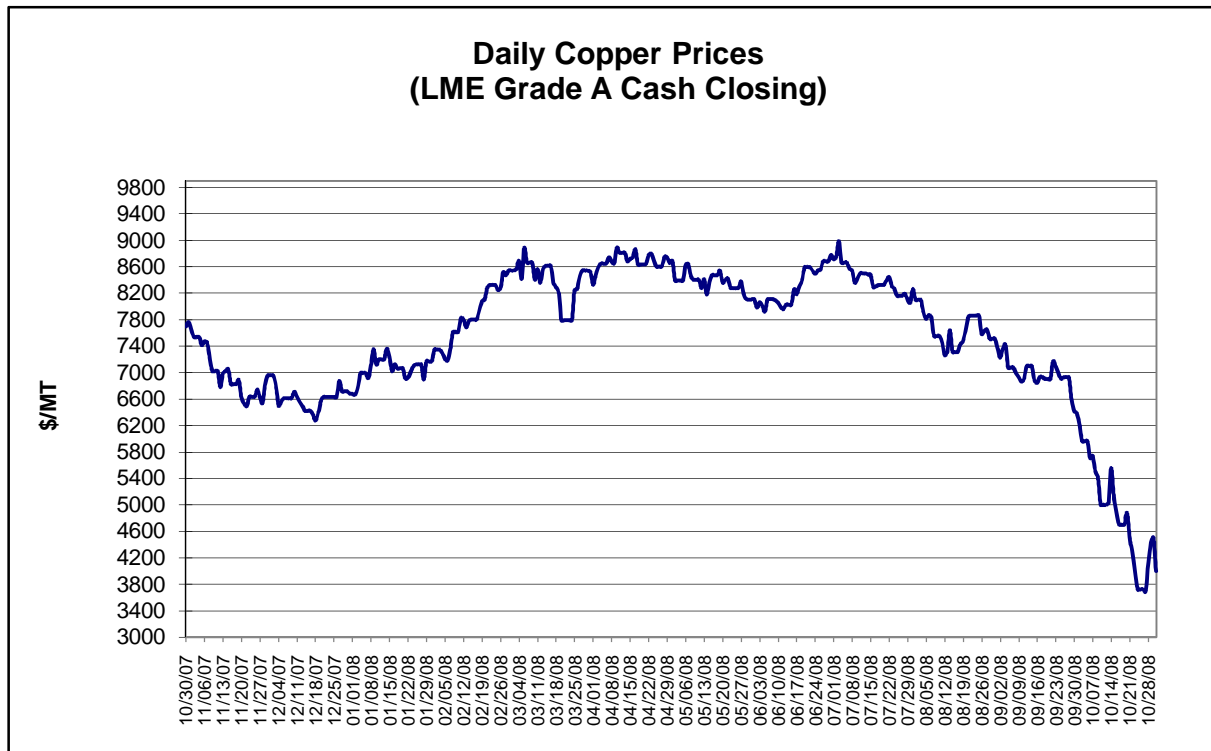
** Based on tonnage capability to produce raw steel for a sustained full order book.

Average Weekly Raw Steel Production



Monthly Raw Steel Production

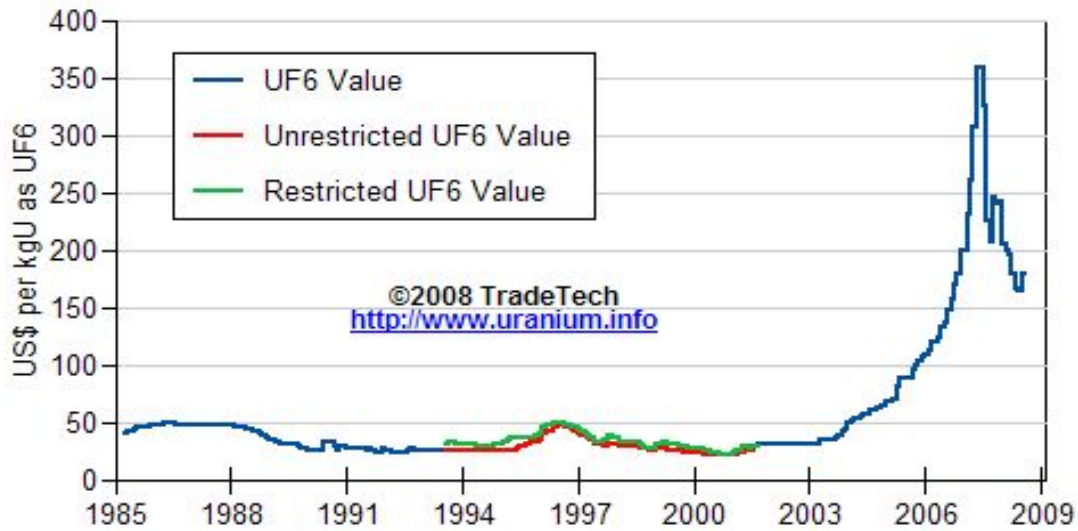




Data reflect closings on weekends and holidays.

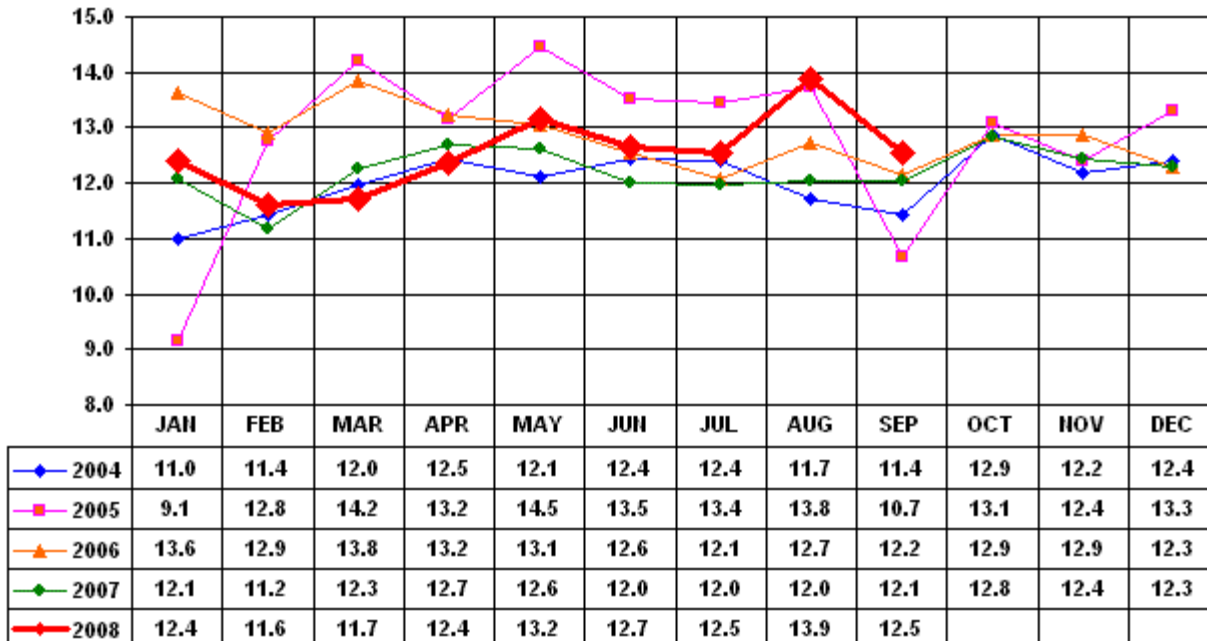
Source: Platts Metals Week

Trade Tech's Uranium (UF6) Monthly Spot Prices (US\$/kg as UF6)



Source: Trade Tech, Uranium Info Website – <http://www.uranium.info>

Coal and Coke Monthly Tonnage Indicator for Internal U.S. Waterways

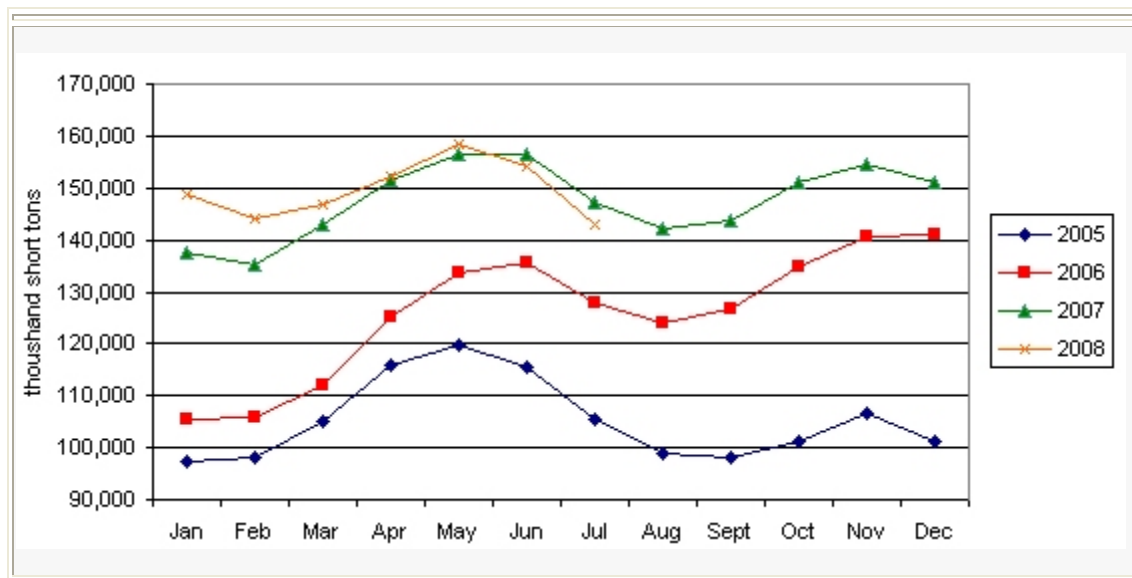


Source: U.S. Army Corps of Engineers, Waterborne Commerce Statistics Center

| Average Weekly Coal Commodity Spot Prices (Dollars per Short Ton) | | | | | |
|--|--|--|--|---|---------------------------------------|
| Week Ended | Central Appalachia 12,500 Btu, 1.2 SO2 | Northern Appalachia 13,000 Btu, <3.0 SO2 | Illinois Basin 11,800 Btu, 5.0 SO2 | Powder River Basin 8,800 Btu, 0.8 SO2 | Uinta Basin 11,700 Btu, 0.8 SO2 |
| 19-Sep-08 | \$140.00 | \$150.00 | \$84.00 | \$11.25 | \$61.00 |
| 26-Sep-08 | \$135.00 | \$150.00 | \$84.00 | \$11.25 | \$61.00 |
| 03-Oct-08 | \$133.00 | \$143.00 | \$84.00 | \$14.50 | \$61.00 |
| 10-Oct-08 | \$133.00 | \$138.00 | \$84.00 | \$14.50 | \$61.00 |
| 17-Oct-08 | \$133.00 | \$138.00 | \$84.00 | \$14.50 | \$61.00 |
| 24-Oct-08 | \$119.25 | \$123.00 | \$84.00 | \$14.50 | \$61.00 |
| 31-Oct-08 | \$119.25 | \$111.50 | \$84.00 | \$14.50 | \$73.00 |

Source: Energy Information Administration (from Platts *Coal Outlook*, "Weekly Price Survey")

EIA Electric Power Sector Coal Stocks



Source: Energy Information Administration

| USGS Production of Selected Mineral Commodities | 2008 Year to Date - 2nd Quarter | 2007 Year to Date - 2nd Quarter | Percent Change |
|--|--|--|-----------------------|
| Aluminum, secondary (000 Mt.) | 445.0 | 477.0 | -7% |
| Cement (Mil. Mt.) | 41.1 | 43.7 | -6% |
| Gypsum (Mil. Mt.) | 9.4 | 10.9 | -14% |
| Iron Ore (Mil. Mt.) | 26.8 | 25.1 | 7% |
| Phosphate rock (Mil. Mt.) | 15.3 | 14.7 | 4% |
| Sand & gravel, construction (Mil. Mt.) | 477.0 | 533.0 | -11% |
| Soda ash (Mil. Mt.) | 5.6 | 5.5 | 2% |
| Stone, crushed (Mil. Mt.) | 664.0 | 730.0 | -9% |
| Zinc (000 Mt.) | 420.0 | 365.0 | 15% |

Source: U.S. Geological Survey, Mineral Industry Surveys, *U.S. Production of Selected Mineral Commodities in the Second Quarter 2008*, August 2008