

---

National Mining Association

# Weekly Statistical Summary

January 18, 2008 Edition  
(Data for Week Ending January 12, 2008)

Prepared by  
National Mining Association



Suite 500 East, 101 Constitution Avenue, NW  
Washington, DC, 20001  
Phone (202) 463-2600  
Visit us at <http://www.nma.org>

# NMA Weekly Statistical Summary

Vol. 46, No. 02  
Dated 01/18/08

PRODUCTION, CONSUMPTION & TRADE						
	Week Ended			Cumulative Jan 1 to		
	01/12/08	01/13/07	% Chng	01/12/08	01/13/07	% Chng
<b>EIA Coal Production (000 Tons):</b>						
Week Ended/Year to Date	22,627	22,346	1.3%	38,472	39,837	-3.4%
52 Weeks Ended	1,145,164	1,160,759	-1.3%			
<b>Month Ended -- December</b>						
	<b>December 07/06</b>		<b>% Chng</b>	<b>Jan - Dec 07/06</b>		<b>% Chng</b>
	94,340	96,063	-1.8%	1,148,168	1,162,750	-1.3%
MONTH ENDED AND CUMULATIVE NUMBERS ARE PRELIMINARY AND SUBJECT TO CHANGE						
<b>DOC Bituminous Coal Trade (000 Tons)</b>						
<b>Exports:</b>						
	<b>November 07/06</b>		<b>% Chng</b>	<b>Jan - Nov 07/06</b>		<b>% Chng</b>
Metallurgical	3,096	2,556	21.1%	29,528	25,353	16.5%
Steam	3,119	2,207	41.3%	23,273	19,810	17.5%
<b>Imports:</b>						
	2,889	2,630	9.8%	33,535	33,156	1.1%
<b>Week Ended</b>						
	<b>01/12/08</b>	<b>01/13/07</b>	<b>% Chng</b>	<b>Cumulative Jan 1 to</b>		
				<b>01/12/08</b>	<b>01/13/07</b>	<b>% Chng</b>
<b>EEl Electric Output (Mil. Kwh)</b>	75,302	76,608	-1.7%	155,288	149,437	3.9%
<b>AISI Raw Steel Output (000 Tons)</b>	2,050	1,877	9.2%	4,077	3,754	8.6%
<b>EIA U.S. PETROLEUM DATA</b>						
4-Week Averages 000 Barrels per Day						
<b>Week Ending</b>						
	<b>01/11/08</b>	<b>01/11/07</b>	<b>% Chng</b>	<b>Cumulative Daily Averages</b>		
				<b>2008</b>	<b>2007</b>	<b>% Chng</b>
<b>PETROLEUM SUPPLY:</b>						
Domestic Crude	5,065	5,177	-2.2	--	--	--
Net Imports (Incl. SPR)	9,977	9,762	2.2	--	--	--
SPR Stocks W/D or Added	-88	0	--	--	--	--
Other Stocks W/D or added	351	330	--	--	--	--
Natural Gas Liquids Prod.	2,409	2,355	2.3	--	--	--
Cumulative daily petroleum averages will be shown beginning with week ending April 4, 2008 data.						



**NMA**  
THE AMERICAN RESOURCE

National Mining Association Web Site: [http:// www.nma.org](http://www.nma.org)

## EIA Estimated Weekly U.S. Coal Production Overview (Thousand Short Tons)

Coal-Producing Region and State	Week Ended			Year to Date			52 Weeks Ended		
	1/12/2008	1/5/2008	1/13/2007	1/12/2008	1/12/2007	Percent Change	1/12/2008	1/13/2007	Percent Change
Alabama	394	319	408	645	756	-14.7	19,072	18,954	0.6
Alaska	25	19	36	39	67	-41.5	1,289	1,440	-10.5
Arizona	123	123	161	218	300	-27.3	7,783	8,198	-5.1
Arkansas	2	2	1	3	2	39.2	82	25	230.0
Colorado	715	618	635	1,162	1,056	10.1	36,605	36,386	0.6
Illinois	687	554	757	1,100	1,351	-18.6	33,871	32,888	3.0
Indiana	722	619	716	1,196	1,289	-7.2	35,745	35,102	1.8
Kansas	10	8	8	16	16	1.5	441	434	1.7
<b>Kentucky Total</b>	<b>2,318</b>	<b>1,979</b>	<b>2,338</b>	<b>3,818</b>	<b>4,250</b>	<b>-10.2</b>	<b>115,022</b>	<b>120,596</b>	<b>-4.6</b>
Eastern	1,692	1,458	1,741	2,802	3,191	-12.2	86,176	93,320	-7.7
Western	625	521	597	1,016	1,060	-4.1	28,846	27,275	5.8
Louisiana	92	110	92	172	137	25.0	3,165	4,094	-22.7
Maryland	41	35	47	68	87	-22.0	2,569	4,931	-47.9
Mississippi	68	73	69	121	108	12.2	3,638	3,756	-3.2
Missouri	4	4	5	7	9	-15.3	231	381	-39.2
Montana	846	757	801	1,390	1,310	6.1	42,153	41,749	1.0
New Mexico	465	405	435	778	795	-2.1	24,378	25,837	-5.6
North Dakota	585	507	612	985	1,142	-13.7	29,369	30,375	-3.3
Ohio	472	400	444	779	799	-2.4	22,160	22,613	-2.0
Oklahoma	38	32	33	63	61	2.3	1,737	1,974	-12.0
<b>Pennsylvania Total</b>	<b>1,313</b>	<b>1,077</b>	<b>1,382</b>	<b>2,145</b>	<b>2,534</b>	<b>-15.4</b>	<b>64,849</b>	<b>66,176</b>	<b>-2.0</b>
Anthracite	35	27	32	56	59	-4.9	1,557	1,536	1.4
Bituminous	1,278	1,050	1,351	2,088	2,474	-15.6	63,292	64,641	-2.1
Tennessee	48	42	56	80	105	-23.9	2,572	2,794	-8.0
Texas	823	732	787	1,352	1,278	5.8	42,015	45,341	-7.3
Utah	453	381	483	739	877	-15.7	23,458	25,871	-9.3
Virginia	511	426	574	833	1,031	-19.2	26,661	29,718	-10.3
Washington	0	0	0	0	0	*	0	2,463	-100.0
<b>West Virginia Total</b>	<b>3,073</b>	<b>2,583</b>	<b>3,188</b>	<b>5,030</b>	<b>5,738</b>	<b>-12.3</b>	<b>153,505</b>	<b>152,242</b>	<b>0.8</b>
Northern	971	761	951	1,537	1,717	-10.5	44,241	42,420	4.3
Southern	2,102	1,822	2,238	3,493	4,021	-13.1	109,264	109,822	-0.5
Wyoming	8,799	9,656	8,274	15,731	14,739	6.7	452,794	446,421	1.4
<b>Appalachian Total</b>	<b>7,545</b>	<b>6,340</b>	<b>7,843</b>	<b>12,382</b>	<b>14,240</b>	<b>-13.0</b>	<b>377,564</b>	<b>390,748</b>	<b>-3.4</b>
<b>Interior Total</b>	<b>3,072</b>	<b>2,654</b>	<b>3,066</b>	<b>5,046</b>	<b>5,311</b>	<b>-5.0</b>	<b>149,770</b>	<b>151,270</b>	<b>-1.0</b>
<b>Western Total</b>	<b>12,011</b>	<b>12,466</b>	<b>11,437</b>	<b>21,043</b>	<b>20,286</b>	<b>3.7</b>	<b>617,830</b>	<b>618,741</b>	<b>-0.1</b>
<b>East of Miss. River</b>	<b>9,648</b>	<b>8,107</b>	<b>9,982</b>	<b>15,816</b>	<b>18,048</b>	<b>-12.4</b>	<b>479,663</b>	<b>489,771</b>	<b>-2.1</b>
<b>West of Miss. River</b>	<b>12,979</b>	<b>13,354</b>	<b>12,364</b>	<b>22,656</b>	<b>21,789</b>	<b>4.0</b>	<b>665,501</b>	<b>670,989</b>	<b>-0.8</b>
Bituminous and Lignite	22,592	21,433	22,314	38,415	39,778	-3.4	1,143,607	1,159,223	-1.3
Anthracite	35	27	32	56	59	-4.9	1,557	1,536	1.4
<b>U.S. Total</b>	<b>22,627</b>	<b>21,461</b>	<b>22,346</b>	<b>38,472</b>	<b>39,837</b>	<b>-3.4</b>	<b>1,145,164</b>	<b>1,160,759</b>	<b>-1.3</b>
Railroad Cars Loaded	146,973	134,311	142,875	281,284	274,286	2.6	7,411,030	7,450,329	-0.5

Source: Energy Information Administration



## WEEKLY ELECTRIC OUTPUT

Essential Energy Information from EEI's Statistics Department

Volume 76 No. 2

### OUTPUT FOR WEEK ENDED - Jan 12, 2008

Jan 16, 2008

The net available amount of electric energy distributed by the Total Electric Utility Industry+ for the week ended Saturday, Jan 12, 2008 was 75,302 gigawatthours (GWh), according to the Edison Electric Institute. This is equivalent to 174 on the weekly electric output index.

### WEEKLY ELECTRIC OUTPUT BY GEOGRAPHIC DIVISION

(48 CONTIGUOUS STATES)

	Week Ended January 12		52 Weeks Ended January 12	
	GWh Output	% Increase Over Corresponding Week of 2007	GWh Output	% Increase Over Corresponding Period of 2007
New England	2,500	-1.3	134,629	2.3
Mid-Atlantic	8,118	-2.3	459,482	3.6
Central Industrial	13,582	-2.4	722,872	4.1
West Central	6,723	1.4	352,768	2.5
Southeast	19,533	-3.8	1,109,178	3.4
South Central	10,195	-3.8	598,683	-0.3
Rocky Mountain	5,081	2.7	278,026	6.3
Pacific Northwest	3,990	8.2	159,764	5.0
Pacific Southwest	5,580	-1.9	291,062	-0.4
Total United States	75,302	-1.7	4,106,463	2.9

### WEEKLY ELECTRIC OUTPUT IN PREVIOUS WEEKS--GWh

Week Ended	2008	Week Ended	2007	% Inc. (08/07)	52 Weeks Ended	2008	% Inc. (08/07)
Dec 22	80,631	Dec 23	74,830	7.8	Dec 22	4,097,814	2.8
Dec 29	74,832	Dec 30	72,033	3.9	Dec 29	4,100,612	2.8
Jan 05	79,986	Jan 06	72,829	9.8	Jan 05	4,107,770	3.0
Jan 12	75,302	Jan 13	76,608	-1.7	Jan 12	4,106,463	2.9
Jan 12	155,288	Jan 13	149,437	3.9	YEAR TO DATE, FIRST 2 WEEKS		

### WEEKLY ELECTRIC OUTPUT INDEX--TOTAL U.S.\*

SEASONALLY ADJUSTED 1982 = 100

Week Ended	2008	Week Ended	2007	Week Ended	2006
Dec 22	180	Dec 23	170	Dec 24	191
Dec 29	175	Dec 30	169	Dec 31	167
Jan 05	192	Jan 06	171	Jan 07	167
Jan 12	174	Jan 13	172	Jan 14	164

\* Excludes Alaska and Hawaii.

+ Includes investor-owned companies, cooperatives and government-owned utilities.

Copyright © 2008 Edison Electric Institute. All rights reserved.

## WEEKLY ELECTRIC OUTPUT BY GEOGRAPHIC DIVISION (48 CONTIGUOUS STATES)

	Week Ended			NMA CUMULATIVE JANUARY 1 to			52 Weeks Ended		
	12-Jan 2008 GWh Output	13-Jan 2007 GWh Output	% Increase Over Corresponding Week of 2007	12-Jan 2008 GWh Output	13-Jan 2007 GWh Output	% Increase Over Corresponding Week of 2007	12-Jan 2008 GWh Output	13-Jan 2007 GWh Output	% Increase Over Corresponding Week of 2007
<b>New England</b>	2,500	2,534	-1.3%	<b>5,169</b>	<b>4,986</b>	<b>3.7%</b>	134,629	131,634	2.3%
<b>Mid-Atlantic</b>	8,118	8,312	-2.3%	<b>17,027</b>	<b>16,214</b>	<b>5.0%</b>	459,482	443,438	3.6%
<b>Central Industrial</b>	13,582	13,911	-2.4%	<b>27,583</b>	<b>26,851</b>	<b>2.7%</b>	722,872	694,658	4.1%
<b>West Central</b>	6,723	6,631	1.4%	<b>13,303</b>	<b>12,752</b>	<b>4.3%</b>	352,768	344,211	2.5%
<b>Southeast</b>	19,533	20,303	-3.8%	<b>41,666</b>	<b>39,146</b>	<b>6.4%</b>	1,109,178	1,072,340	3.4%
<b>South Central</b>	10,195	10,594	-3.8%	<b>21,783</b>	<b>21,236</b>	<b>2.6%</b>	598,683	600,365	-0.3%
<b>Rocky Mountain</b>	5,081	4,949	2.7%	<b>10,412</b>	<b>9,817</b>	<b>6.1%</b>	278,026	261,667	6.3%
<b>Pacific Northwest</b>	3,990	3,688	8.2%	<b>8,046</b>	<b>7,360</b>	<b>9.3%</b>	159,764	152,091	5.0%
<b>Pacific Southwest</b>	<u>5,580</u>	<u>5,686</u>	-1.9%	<u><b>10,299</b></u>	<u><b>11,075</b></u>	<b>-7.0%</b>	<u>291,062</u>	<u>292,113</u>	-0.4%
<b>Total United States *</b>	75,302	76,608	-1.7%	<b>155,288</b>	<b>149,437</b>	<b>3.9%</b>	4,106,464	3,992,517	2.9%

**Notes:** EEI output data are an estimate of electricity load made available for distribution derived as weekly net generation + purchases from non-utilities + net imports - exports - sales for resale. It is not meant to be a measure of electricity generation for the U.S. EEI survey data represent the majority of national distribution (large utilities, large government power projects, some independent and large municipal power projects). The remaining segment of the industry (smaller producers) is estimated. Non-utility generation is captured via direct sales to utilities.

\* Excludes Alaska and Hawaii

\*\* Less than one-tenth of one percent

SOURCE: Edison Electric Institute (EEI), *Weekly Electric Output Report*.

AMERICAN IRON AND STEEL INSTITUTE  
 1140 Connecticut Avenue, Suite 705  
 Washington, D.C. 20036

January 15, 2008

**ESTIMATED WEEKLY RAW STEEL\* PRODUCTION**

<u>Period</u>	<u>Thousand Net Tons</u>	<u>Percent Change from Previous Period</u>	<u>Percent Capability Utilization**</u>	<u>Production by District</u>		
				<u>Week Ending</u>		
				<u>Jan 12</u>	<u>Jan 5</u>	
<b><u>Week Ending</u></b>						
				North East Coast	178	152
				Pgh/Youngstown	202	176
				Lake Erie	101	104
				Detroit	124	131
				Indiana/Chicago	503	540
				Midwest	256	250
				Southern	599	586
				Western	87	88
				<b>Total</b>	<b>2050</b>	<b>2027</b>
<b><u>Year-to-Date+</u></b>						
Jan 12, 2008	2,050	1.1	85.9			
Jan 12, 2007	1,877	9.2	78.2			
Jan 5, 2008	2,027	-0.6	85.0			
Jan 12, 2008	4,077	8.6	85.4			
Jan 12, 2007	3,754	-	78.2			

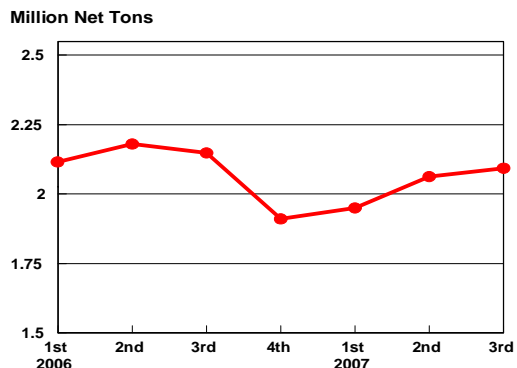
\*Raw steel production tonnage included in this report is estimated based on a sampling of steel producers. Therefore, this report should be used primarily to assess production trends. The AISI production report "AIS 7," produced monthly and available by subscription, provides a more accurate summary of steel production based on data supplied by companies representing approximately 75% of U.S. production capacity.

+Includes revisions for previous months

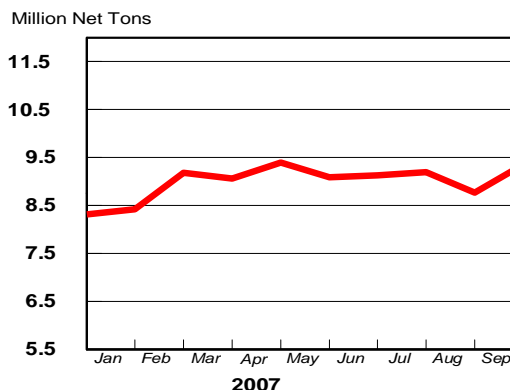
NOTE: Capability for the Fourth Quarter 2007 is approximately 31.3 million net tons vs 30.7 million net tons for the same period last year, and 30.1 million tons for the third quarter of 2007.

Capability -	2003 approx.	2007
	2.3 million tons/week	
	2004	2.2
	2005	2.3
	2006	2.4
	2007	2.4

**Average Weekly Raw Steel Production**

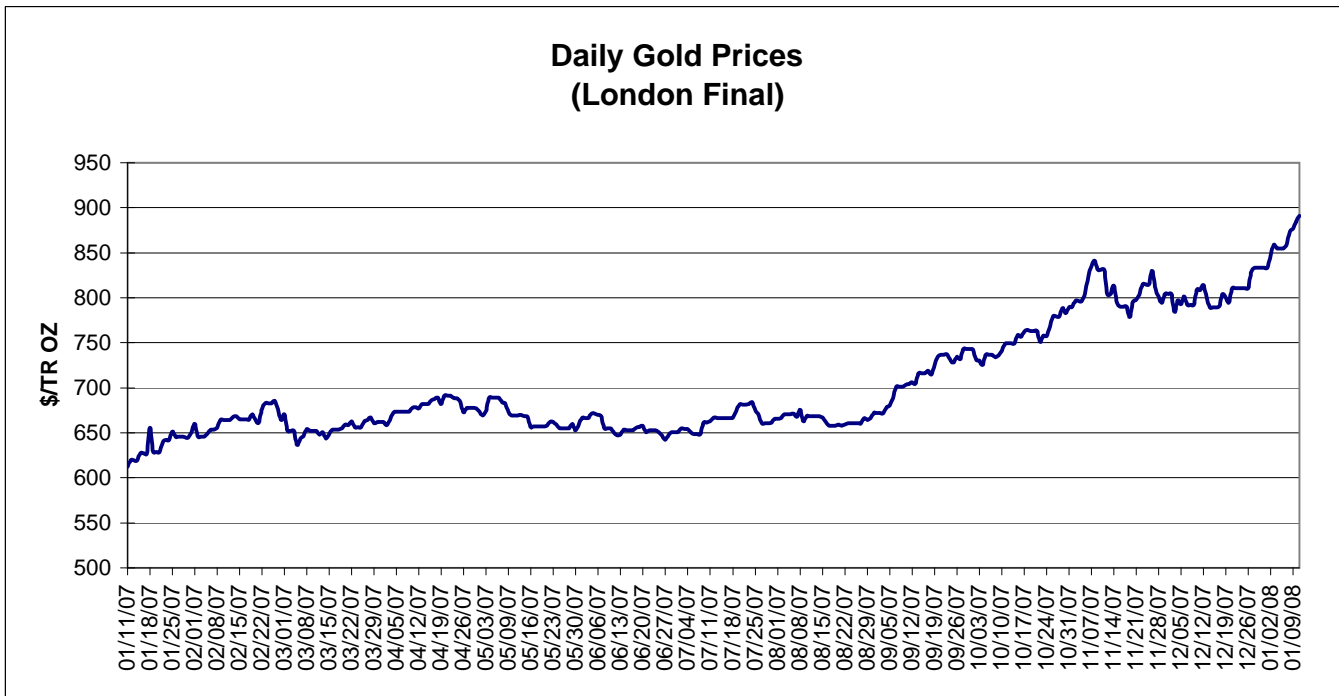
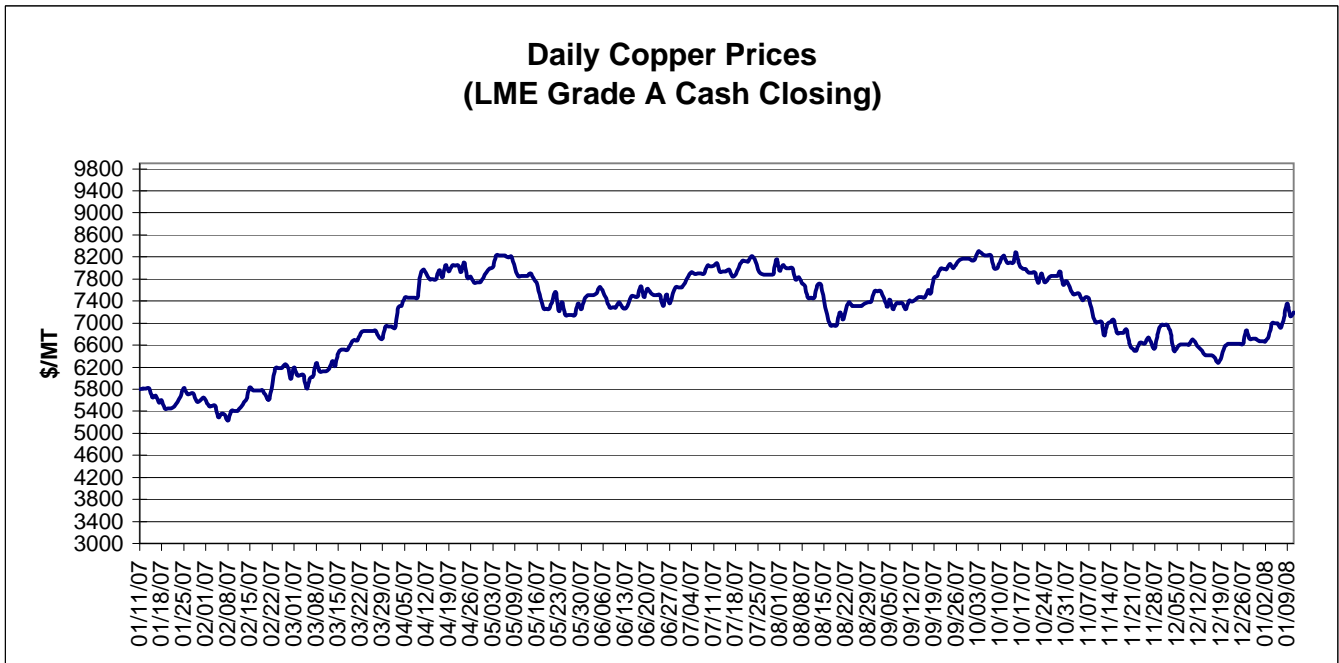


**MONTHLY RAW STEEL PRODUCTION**



\*Steel in the first solid state after melting suitable for further processing or sale, including ingots, steel for castings and strand or pressure cast blooms, slabs, or other product forms.

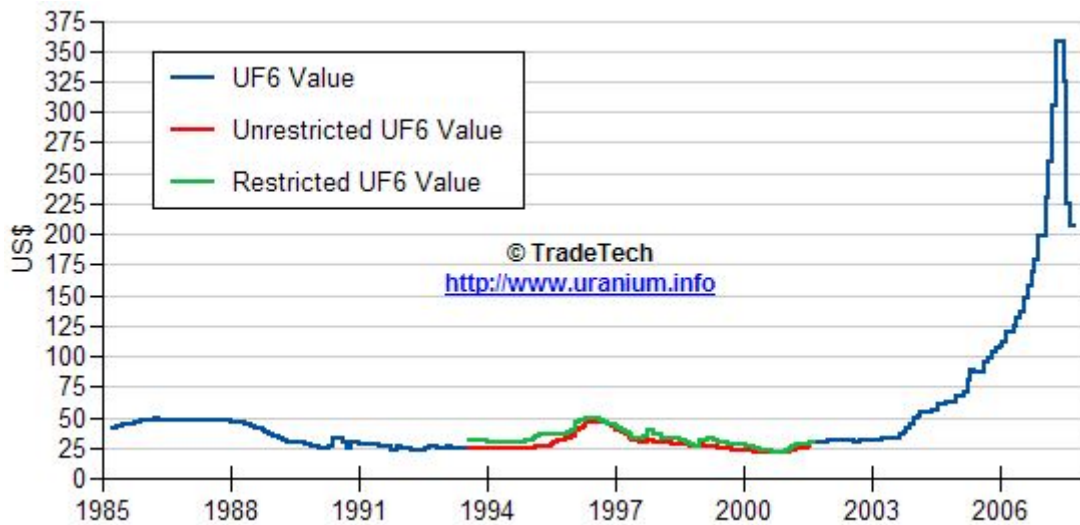
\*\* Based on tonnage capability to produce raw steel for a sustained full order book.



Data reflect closings on weekends and holidays.

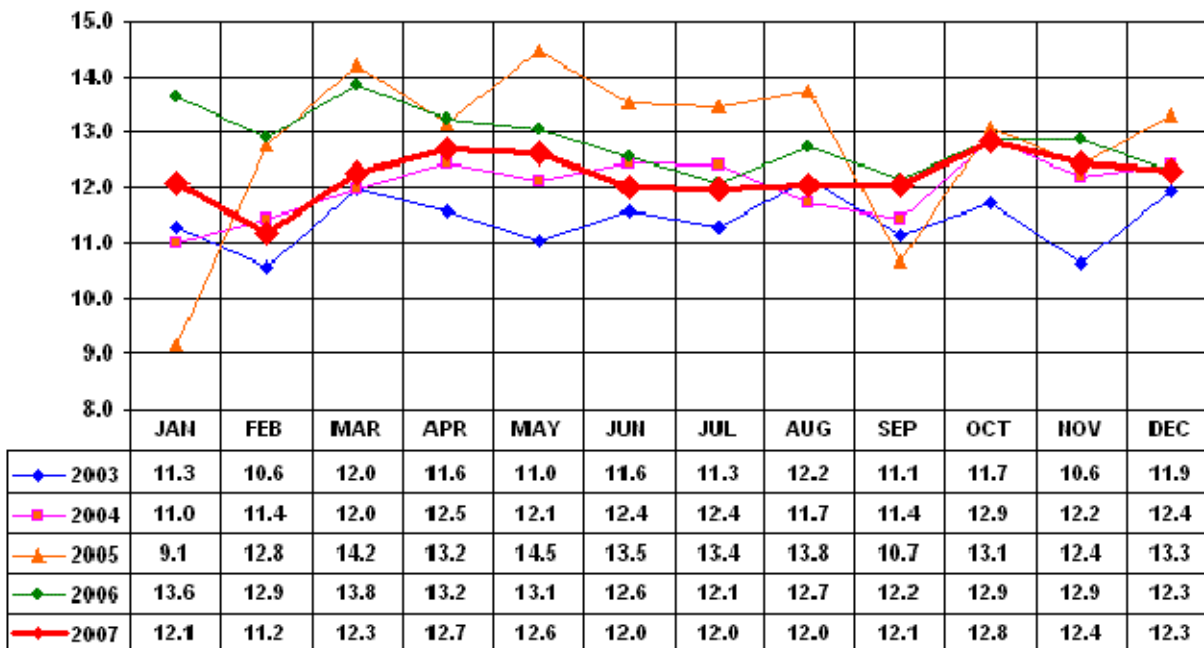
Source: Platts Metals Week

### Trade Tech's Uranium (UF6) Monthly Spot Prices (US\$/kg as UF6)



Source: Trade Tech, Uranium Info Website – <http://www.uranium.info>

### Coal and Coke Monthly Tonnage Indicator for Internal U.S. Waterways



Source: U.S. Army Corps of engineers, Waterborne Commerce Statistics Center

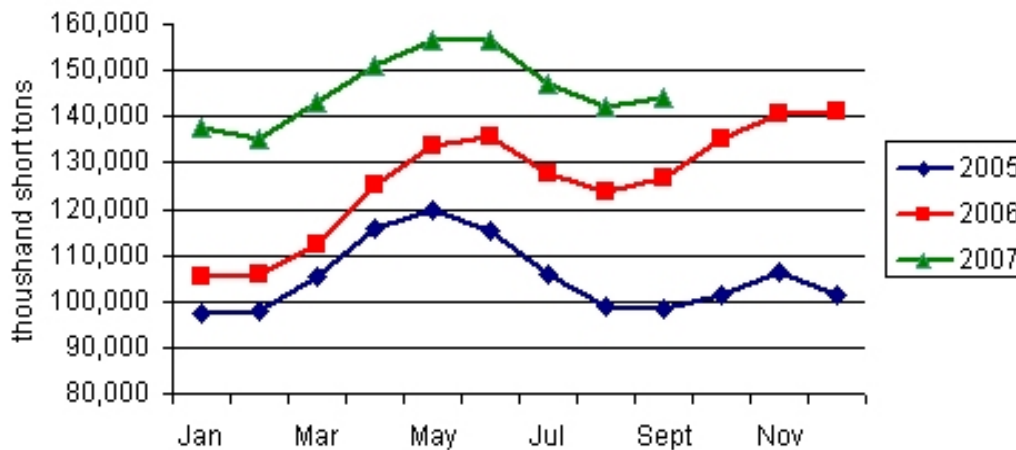
**EIA Weekly Spot Coal Prices**

The following average spot coal prices appear in the graphic below, for the previous and most recent weeks:

Week Ended	Central Appalachia 12,500 Btu, 1.2 SO2	Northern Appalachia 13,000 Btu, <3.0 SO2	Illinois Basin 11,800 Btu, 5.0 SO2	Powder River Basin 8,800 Btu, 0.8 SO2	Uinta Basin 11,700 Btu, 0.8 SO2
30-Nov-07	\$56.80	\$55.25	\$33.50	\$11.15	\$24.00
07-Dec-07	\$57.70	\$55.25	\$33.50	\$11.50	\$24.00
14-Dec-07	\$57.70	\$55.25	\$33.50	\$11.50	\$24.00
21-Dec-07	\$57.70	\$55.25	\$33.50	\$11.50	\$24.00
04-Jan-08	\$58.30	\$61.75	\$34.00	\$11.60	\$24.00
11-Jan-08	\$58.30	\$61.75	\$34.00	\$11.65	\$24.00

Source: Energy Information Administration (from Platts *Coal Outlook*, "Weekly Price Survey")

**Electric Power Sector Coal Stocks**



Source: Energy Information Administration