

---

National Mining Association

# Weekly Statistical Summary

November 9, 2007 Edition  
(Data for Week Ending November 3, 2007)

Prepared by  
National Mining Association



Suite 500 East, 101 Constitution Avenue, NW  
Washington, DC, 20001  
Phone (202) 463-2600  
Visit us at <http://www.nma.org>

# NMA Weekly Statistical Summary

Vol. 45, No. 44  
Dated 11/09/07

PRODUCTION, CONSUMPTION & TRADE						
	Week Ended			Cumulative Jan 1 to		
	11/03/07	11/04/06	% Chng	11/03/07	11/04/06	% Chng
<b>EIA Coal Production (000 Tons):</b>						
Week Ended/Year to Date	22,133	22,576	-2.0%	967,344	981,697	-1.5%
52 Weeks Ended	1,146,722	1,154,645	-0.7%			
<b>Month Ended -- October</b>						
	October 07/06		% Chng	Jan - Oct 07/06		% Chng
	100,234	98,808	1.4%	958,146	970,161	-1.2%
MONTH ENDED AND CUMULATIVE NUMBERS ARE PRELIMINARY AND SUBJECT TO CHANGE						
<b>DOC Bituminous Coal Trade (000 Tons)</b>						
<b>Exports:</b>	August 07/06			Jan - Aug 07/06		
			% Chng			% Chng
Metallurgical	3,237	2,807	15.3%	21,125	18,011	17.3%
Steam	2,172	2,277	-4.6%	15,697	13,459	16.6%
<b>Imports:</b>	3,716	3,849	-3.5%	24,280	23,943	1.4%
<b>EI Electric Output (Mil. Kwh)</b>						
	Week Ended			Cumulative Jan 1 to		
	11/03/07	11/04/06	% Chng	11/03/07	11/04/06	% Chng
	70,822	71,648	-1.2%	3,491,543	3,395,716	2.8%
<b>AISI Raw Steel Output (000 Tons)</b>						
	2,100	1,987	5.7%	89,978	93,795	-4.1%
<b>EIA U.S. PETROLEUM DATA</b>						
4-Week Averages 000 Barrels per Day						
<b>PETROLEUM SUPPLY:</b>						
	Week Ending			Cumulative Daily Averages		
	11/02/07	10/02/06	% Chng	2007	2006	% Chng
Domestic Crude	5,116	5,106	0.2	5,138	5,095	0.8
Net Imports (Incl. SPR)	9,613	10,062	-4.5	9,968	10,163	-1.9
SPR Stocks W/D or Added	-44	-24	--	-18	-13	--
Other Stocks W/D or added	293	-200	--	14	-51	--
Natural Gas Liquids Prod.	2,468	2,336	5.7	2,380	2,199	8.2



**NMA**  
THE AMERICAN RESOURCE

National Mining Association Web Site: [http:// www.nma.org](http://www.nma.org)

## EIA Estimated Weekly U.S. Coal Production Overview (Thousand Short Tons)

Coal-Producing Region and State	Week Ended			Year To Date			52 Weeks Ended		
	11/3/2007	10/27/2007	11/4/2006	11/3/2007	11/3/2006	Percent Change	11/3/2007	11/4/2006	Percent Change
Alabama	353	365	365	16,561	16,349	1.3	19,232	19,266	-0.2
Alaska	27	28	31	1,276	1,192	7.0	1,509	1,385	8.9
Arizona	126	130	167	6,682	6,990	-4.4	7,909	8,660	-8.7
Arkansas	1	1	1	51	17	199.8	56	17	227.4
Colorado	681	703	743	31,252	30,677	1.9	36,819	35,998	2.3
Illinois	632	653	673	29,620	27,680	7.0	34,641	32,231	7.5
Indiana	665	687	723	30,115	29,715	1.3	35,495	35,089	1.2
Kansas	9	10	11	381	338	12.9	470	363	29.4
<b>Kentucky Total</b>	<b>2,194</b>	<b>2,267</b>	<b>2,323</b>	<b>98,577</b>	<b>103,800</b>	<b>-5.0</b>	<b>115,851</b>	<b>121,801</b>	<b>-4.9</b>
Eastern	1,614	1,667	1,767	74,205	80,692	-8.0	87,341	94,668	-7.7
Western	581	600	556	24,373	23,109	5.5	28,510	27,134	5.1
Louisiana	89	78	73	2,494	3,413	-26.9	3,187	4,150	-23.2
Maryland	69	72	55	2,859	4,646	-38.5	3,266	5,408	-39.6
Mississippi	70	70	83	3,135	3,239	-3.2	3,684	3,765	-2.1
Missouri	4	4	6	218	348	-37.6	263	451	-41.6
Montana	803	829	867	34,150	35,197	-3.0	40,672	41,283	-1.5
New Mexico	466	481	553	21,682	21,800	-0.5	25,784	26,237	-1.7
North Dakota	552	570	645	23,849	25,623	-6.9	28,638	30,312	-5.5
Ohio	420	434	454	18,839	19,341	-2.6	22,203	23,132	-4.0
Oklahoma	36	37	36	1,534	1,729	-11.3	1,803	2,022	-10.8
<b>Pennsylvania Total</b>	<b>1,190</b>	<b>1,230</b>	<b>1,308</b>	<b>55,521</b>	<b>56,431</b>	<b>-1.6</b>	<b>65,247</b>	<b>66,926</b>	<b>-2.5</b>
Anthracite	32	33	30	1,291	1,307	-1.2	1,522	1,583	-3.8
Bituminous	1,158	1,196	1,277	54,230	55,124	-1.6	63,725	65,343	-2.5
Tennessee	48	49	54	2,299	2,407	-4.5	2,696	2,885	-6.5
Texas	825	852	862	35,947	38,547	-6.7	42,837	46,058	-7.0
Utah	445	460	553	20,566	21,896	-6.1	24,675	25,697	-4.0
Virginia	526	544	578	24,283	25,573	-5.0	28,560	29,513	-3.2
Washington	0	0	54	0	2,429	-100.0	151	3,176	-95.2
<b>West Virginia Total</b>	<b>2,816</b>	<b>2,909</b>	<b>2,963</b>	<b>130,275</b>	<b>130,236</b>	<b>*</b>	<b>152,314</b>	<b>153,046</b>	<b>-0.5</b>
Northern	853	882	789	38,699	36,514	6.0	44,560	43,041	3.5
Southern	1,963	2,028	2,174	91,576	93,722	-2.3	107,754	110,005	-2.0
Wyoming	9,084	8,871	8,395	375,178	372,085	0.8	448,758	435,776	3.0
<b>Appalachian Total</b>	<b>7,036</b>	<b>7,270</b>	<b>7,544</b>	<b>324,841</b>	<b>335,674</b>	<b>-3.2</b>	<b>380,861</b>	<b>394,842</b>	<b>-3.5</b>
<b>Interior Total</b>	<b>2,913</b>	<b>2,994</b>	<b>3,024</b>	<b>127,867</b>	<b>128,135</b>	<b>-0.2</b>	<b>150,947</b>	<b>151,279</b>	<b>-0.2</b>
<b>Western Total</b>	<b>12,184</b>	<b>12,074</b>	<b>12,008</b>	<b>514,636</b>	<b>517,887</b>	<b>-0.6</b>	<b>614,914</b>	<b>608,525</b>	<b>1.0</b>
<b>East of Miss. River</b>	<b>8,985</b>	<b>9,280</b>	<b>9,578</b>	<b>412,084</b>	<b>419,418</b>	<b>-1.7</b>	<b>483,192</b>	<b>493,060</b>	<b>-2.0</b>
<b>West of Miss. River</b>	<b>13,148</b>	<b>13,057</b>	<b>12,997</b>	<b>555,260</b>	<b>562,279</b>	<b>-1.2</b>	<b>663,530</b>	<b>661,586</b>	<b>0.3</b>
Bituminous and Lignite	22,100	22,304	22,545	966,052	980,390	-1.5	1,145,200	1,153,063	-0.7
Anthracite	32	33	30	1,291	1,307	-1.2	1,522	1,583	-3.8
<b>U.S. Total</b>	<b>22,133</b>	<b>22,337</b>	<b>22,576</b>	<b>967,344</b>	<b>981,697</b>	<b>-1.5</b>	<b>1,146,722</b>	<b>1,154,645</b>	<b>-0.7</b>
Railroad Cars Loaded	145,069	147,161	144,931	6,261,838	6,320,177	-0.9	7,397,018	7,398,813	*

Source: Energy Information Administration

## EIA Estimated Monthly U.S. Coal Production Overview (Thousand Short Tons)

Coal-Producing Region and State	Week Ended		Year To Date		Month Ended		January - October		Percent Change
	11/3/2007	11/4/2006	11/3/2007	11/3/2006	October 2007	October 2006	2007	2006	
Alabama	353	365	16,561	16,349	1,700	1,606	16,419	16,132	1.8
Alaska	27	31	1,276	1,192	125	139	1,265	1,173	7.8
Arizona	126	167	6,682	6,990	629	736	6,632	6,889	-3.7
Arkansas	1	1	51	17	5	3	50	16	203.1
Colorado	681	743	31,252	30,677	3,177	3,287	30,966	30,325	2.1
Illinois	632	673	29,620	27,680	2,881	2,969	29,362	27,310	7.5
Indiana	665	723	30,115	29,715	3,099	3,190	29,845	29,310	1.8
Kansas	9	11	381	338	42	49	377	331	14.0
<b>Kentucky Total</b>	<b>2,194</b>	<b>2,323</b>	<b>98,577</b>	<b>103,800</b>	<b>10,186</b>	<b>10,241</b>	<b>97,689</b>	<b>102,470</b>	<b>-4.7</b>
Eastern	1,614	1,767	74,205	80,692	7,571	7,789	73,554	79,665	-7.7
Western	581	556	24,373	23,109	2,615	2,452	24,135	22,806	5.8
Louisiana	89	73	2,494	3,413	333	373	2,456	3,378	-27.3
Maryland	69	55	2,859	4,646	381	242	2,831	4,613	-38.6
Mississippi	70	83	3,135	3,239	342	291	3,106	3,200	-3.0
Missouri	4	6	218	348	23	28	216	345	-37.4
Montana	803	867	34,150	35,197	3,561	3,841	33,810	34,801	-2.8
New Mexico	466	553	21,682	21,800	2,187	2,436	21,494	21,481	0.1
North Dakota	552	645	23,849	25,623	2,469	2,841	23,629	25,236	-6.4
Ohio	420	454	18,839	19,341	2,009	2,005	18,667	19,088	-2.2
Oklahoma	36	36	1,534	1,729	173	160	1,520	1,707	-11.0
<b>Pennsylvania Total</b>	<b>1,190</b>	<b>1,308</b>	<b>55,521</b>	<b>56,431</b>	<b>5,477</b>	<b>5,763</b>	<b>55,041</b>	<b>55,672</b>	<b>-1.1</b>
Anthracite	32	30	1,291	1,307	138	134	1,278	1,289	-0.8
Bituminous	1,158	1,277	54,230	55,124	5,339	5,629	53,763	54,383	-1.1
Tennessee	48	54	2,299	2,407	234	238	2,280	2,375	-4.0
Texas	825	862	35,947	38,547	3,811	3,817	35,596	38,163	-6.7
Utah	445	553	20,566	21,896	2,057	2,436	20,386	21,580	-5.5
Virginia	526	578	24,283	25,573	2,472	2,549	24,068	25,251	-4.7
Washington	0	54	0	2,429	0	239	0	2,396	-100.0
<b>West Virginia Total</b>	<b>2,816</b>	<b>2,963</b>	<b>130,275</b>	<b>130,236</b>	<b>13,015</b>	<b>13,070</b>	<b>129,130</b>	<b>128,576</b>	<b>0.4</b>
Northern	853	789	38,699	36,514	3,985	3,480	38,352	36,068	6.3
Southern	1,963	2,174	91,576	93,722	9,030	9,590	90,777	92,508	-1.9
Wyoming	9,084	8,395	375,178	372,085	39,845	36,262	371,311	368,340	0.8
<b>Appalachian Total</b>	<b>7,036</b>	<b>7,544</b>	<b>324,841</b>	<b>335,674</b>	<b>32,860</b>	<b>33,261</b>	<b>321,991</b>	<b>331,372</b>	<b>-2.8</b>
<b>Interior Total</b>	<b>2,913</b>	<b>3,024</b>	<b>127,867</b>	<b>128,135</b>	<b>13,324</b>	<b>13,332</b>	<b>126,663</b>	<b>126,566</b>	<b>0.1</b>
<b>Western Total</b>	<b>12,184</b>	<b>12,008</b>	<b>514,636</b>	<b>517,887</b>	<b>54,050</b>	<b>52,215</b>	<b>509,492</b>	<b>512,223</b>	<b>-0.5</b>
<b>East of Miss. River</b>	<b>8,985</b>	<b>9,578</b>	<b>412,084</b>	<b>419,418</b>	<b>41,797</b>	<b>42,163</b>	<b>408,439</b>	<b>413,997</b>	<b>-1.3</b>
<b>West of Miss. River</b>	<b>13,148</b>	<b>12,997</b>	<b>555,260</b>	<b>562,279</b>	<b>58,437</b>	<b>56,646</b>	<b>549,707</b>	<b>556,164</b>	<b>-1.2</b>
Bituminous and Lignite	22,100	22,545	966,052	980,390	100,095	98,674	956,867	968,872	-1.2
Anthracite	32	30	1,291	1,307	138	134	1,278	1,289	-0.8
<b>U.S. Total</b>	<b>22,133</b>	<b>22,576</b>	<b>967,344</b>	<b>981,697</b>	<b>100,234</b>	<b>98,808</b>	<b>958,146</b>	<b>970,161</b>	<b>-1.2</b>
Railroad Cars Loaded	145,069	144,931	6,261,838	6,320,177	--	--	--	--	--

Source: Energy Information Administration



Volume 75 No. 44

**OUTPUT FOR WEEK ENDED - Nov 03, 2007**

Nov 07, 2007

The net available amount of electric energy distributed by the Total Electric Utility Industry+ for the week ended Saturday, **Nov 03, 2007** was **70,822** gigawatthours (GWh), according to the Edison Electric Institute. This is equivalent to **177** on the weekly electric output index.

**WEEKLY ELECTRIC OUTPUT BY GEOGRAPHIC DIVISION**  
(48 CONTIGUOUS STATES)

	Week Ended November 03		52 Weeks Ended November 03	
	GWh Output	% Increase Over Corresponding Week of 2006	GWh Output	% Increase Over Corresponding Period of 2006
New England	2,357	-1.7	133,538	0.6
Mid-Atlantic	7,849	-1.7	455,203	1.9
Central Industrial	12,583	-3.1	718,941	2.9
West Central	5,980	-1.7	350,843	1.7
Southeast	19,348	0.5	1,103,257	2.6
South Central	9,506	-1.7	597,597	-0.1
Rocky Mountain	5,303	7.0	274,442	6.1
Pacific Northwest	3,109	-0.2	157,896	4.0
Pacific Southwest	4,787	-8.2	292,978	0.5
Total United States	70,822	-1.2	4,084,694	2.2

**WEEKLY ELECTRIC OUTPUT IN PREVIOUS WEEKS--GWh**

Week Ended	2007	Week Ended	2006	% Inc. (07/06)	52 Weeks Ended	2007	% Inc. (07/06)
Oct 13	77,585	Oct 14	70,492	10.1	Oct 13	4,082,363	2.2
Oct 20	73,975	Oct 21	71,658	3.2	Oct 20	4,084,679	2.3
Oct 27	73,267	Oct 28	72,427	1.2	Oct 27	4,085,520	2.2
Nov 03	70,822	Nov 04	71,648	-1.2	Nov 03	4,084,694	2.2
Nov 03	3,491,543	Nov 04	3,395,716	2.8	YEAR TO DATE, FIRST 44 WEEKS		

**WEEKLY ELECTRIC OUTPUT INDEX--TOTAL U.S.\***  
**SEASONALLY ADJUSTED 1982 = 100**

Week Ended	2007	Week Ended	2006	Week Ended	2005
Oct 13	192	Oct 14	172	Oct 15	178
Oct 20	186	Oct 21	178	Oct 22	179
Oct 27	185	Oct 28	180	Oct 29	173
Nov 03	177	Nov 04	176	Nov 05	176

\* Excludes Alaska and Hawaii.

+ Includes investor-owned companies, cooperatives and government-owned utilities.

Copyright © 2007 Edison Electric Institute. All rights reserved.

## WEEKLY ELECTRIC OUTPUT BY GEOGRAPHIC DIVISION (48 CONTIGUOUS STATES)

	Week Ended			NMA CUMULATIVE JANUARY 1 to			52 Weeks Ended		
	3-Nov 2007 GWh Output	4-Nov 2006 GWh Output	% Increase Over Corresponding Week of 2006	3-Nov 2007 GWh Output	4-Nov 2006 GWh Output	% Increase Over Corresponding Week of 2006	3-Nov 2007 GWh Output	4-Nov 2006 GWh Output	% Increase Over Corresponding Week of 2006
<b>New England</b>	2,357	2,398	-1.7%	<b>113,771</b>	<b>112,057</b>	<b>1.5%</b>	133,538	132,681	0.6%
<b>Mid-Atlantic</b>	7,849	7,984	-1.7%	<b>389,686</b>	<b>378,234</b>	<b>3.0%</b>	455,203	446,570	1.9%
<b>Central Industrial</b>	12,583	12,984	-3.1%	<b>612,564</b>	<b>588,511</b>	<b>4.1%</b>	718,941	698,784	2.9%
<b>West Central</b>	5,980	6,081	-1.7%	<b>299,685</b>	<b>292,992</b>	<b>2.3%</b>	350,843	344,885	1.7%
<b>Southeast</b>	19,348	19,251	0.5%	<b>944,342</b>	<b>913,177</b>	<b>3.4%</b>	1,103,257	1,075,149	2.6%
<b>South Central</b>	9,506	9,667	-1.7%	<b>515,624</b>	<b>516,397</b>	<b>-0.1%</b>	597,597	598,316	-0.1%
<b>Rocky Mountain</b>	5,303	4,954	7.0%	<b>234,044</b>	<b>220,224</b>	<b>6.3%</b>	274,442	258,681	6.1%
<b>Pacific Northwest</b>	3,109	3,116	-0.2%	<b>130,747</b>	<b>124,225</b>	<b>5.3%</b>	157,896	151,825	4.0%
<b>Pacific Southwest</b>	<u>4,787</u>	<u>5,213</u>	-8.2%	<u><b>251,079</b></u>	<u><b>249,902</b></u>	<b>0.5%</b>	<u>292,978</u>	<u>291,603</u>	0.5%
<b>Total United States *</b>	70,822	71,648	-1.2%	<b>3,491,542</b>	<b>3,395,719</b>	<b>2.8%</b>	4,084,695	3,998,494	2.2%

**Notes:** EEI output data are an estimate of electricity load made available for distribution derived as weekly net generation + purchases from non-utilities + net imports - exports - sales for resale. It is not meant to be a measure of electricity generation for the U.S. EEI survey data represent the majority of national distribution (large utilities, large government power projects, some independent and large municipal power projects). The remaining segment of the industry (smaller producers) is estimated. Non-utility generation is captured via direct sales to utilities.

\* Excludes Alaska and Hawaii

\*\* Less than one-tenth of one percent

SOURCE: Edison Electric Institute (EEI), *Weekly Electric Output Report*.

AMERICAN IRON AND STEEL INSTITUTE  
 1140 Connecticut Avenue, Suite 705  
 Washington, D.C. 20036

November 5, 2007

**ESTIMATED WEEKLY RAW STEEL\* PRODUCTION**

<u>Period</u>	<u>Thousand Net Tons</u>	<u>Percent Change from Previous Period</u>	<u>Percent Capability Utilization**</u>	<u>Production by District</u>		
				<u>Week Ending</u>		
				<u>Nov 3</u>	<u>Oct 27</u>	
<b><u>Week Ending</u></b>				North East Coast	127	150
				Pgh/Youngstown	198	199
				Lake Erie	112	114
				Detroit	113	107
				Indiana/Chicago	534	545
				Midwest	248	247
				Southern	675	635
				Western	<u>93</u>	<u>91</u>
				Total	2100	2088
<b><u>Year-to-Date+</u></b>						
Nov. 3, 2007	2,100	0.5	88.0			
Nov. 3, 2006	1,987	5.6	86.5			
Oct. 27, 2007	2,088	-1.7	87.5			
Nov. 3, 2007	89,978	-4.0	86.0			
Nov. 3, 2006	93,795	-	89.5			

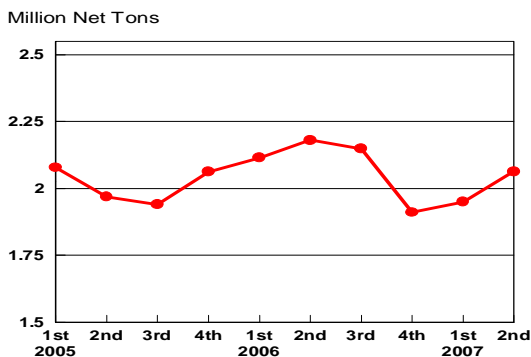
\*Raw steel production tonnage included in this report is estimated based on a sampling of steel producers. Therefore, this report should be used primarily to assess production trends. The AISI production report "AIS 7," produced monthly and available by subscription, provides a more accurate summary of steel production based on data supplied by companies representing approximately 75% of U.S. production capacity.

+Includes revisions for previous months

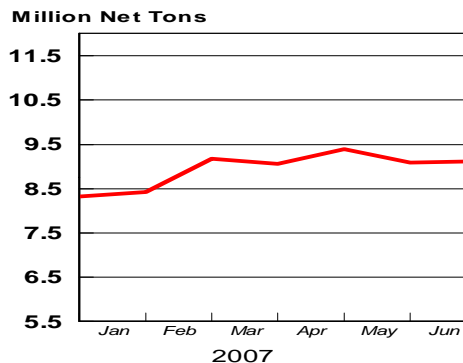
NOTE: Capability for the Fourth Quarter 2007 is approximately 31.3 million net tons vs 30.7 million net tons for the same period last year, and 30.1 million tons for the third quarter of 2007.

Capability -	2003 approx.	2004	2005	2006	2007
	2.3 million tons/week	2.2	2.3	2.4	2.4

**Average Weekly Raw Steel Production**

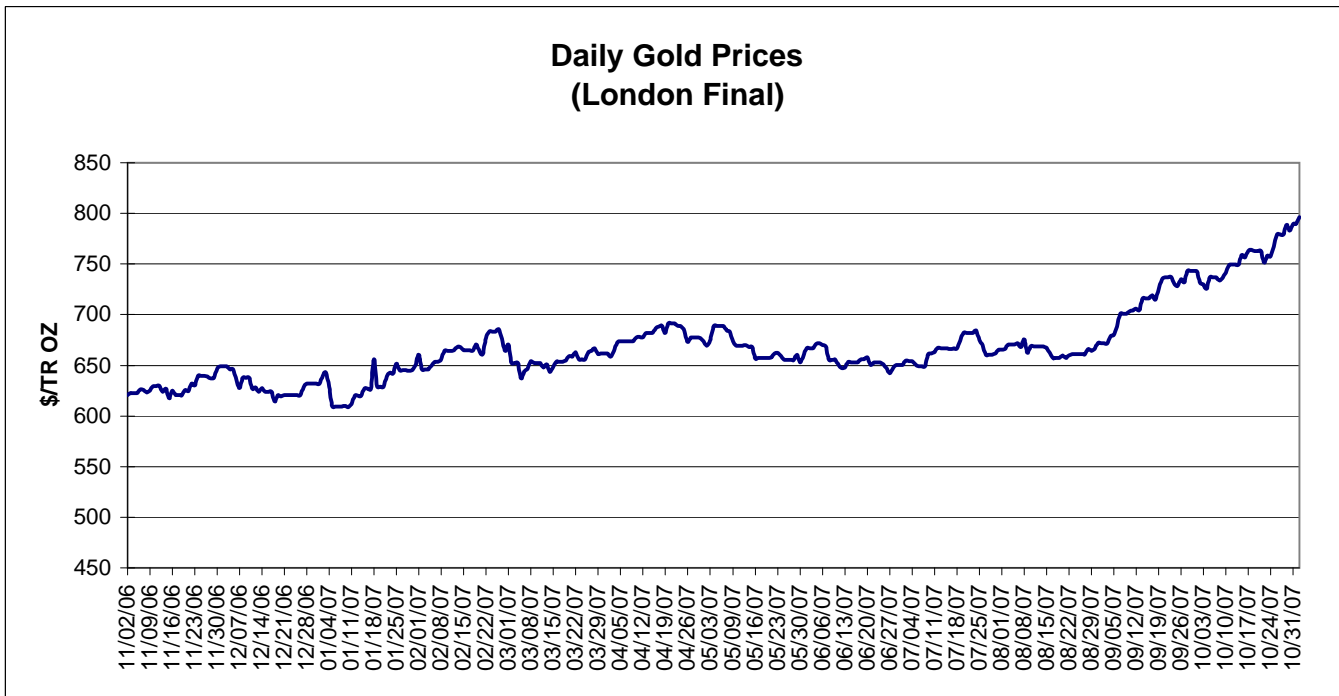
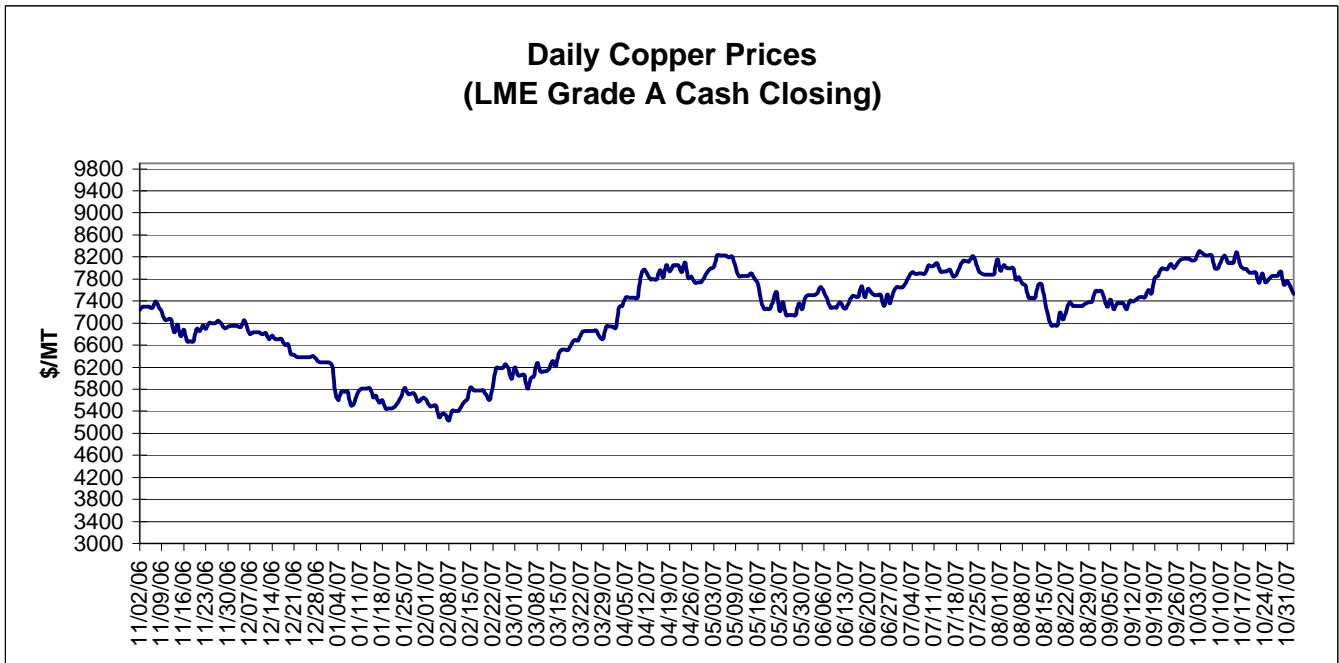


**MONTHLY RAW STEEL PRODUCTION**



\*Steel in the first solid state after melting suitable for further processing or sale, including ingots, steel for castings and strand or pressure cast blooms, slabs, or other product forms.

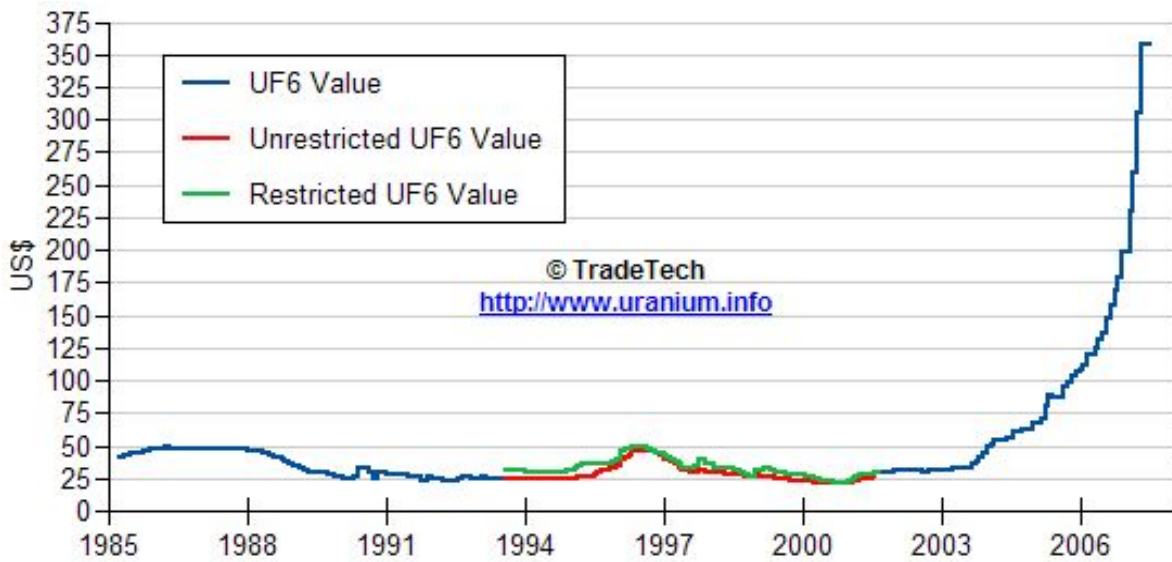
\*\* Based on tonnage capability to produce raw steel for a sustained full order book.



Data reflect closings on weekends and holidays.

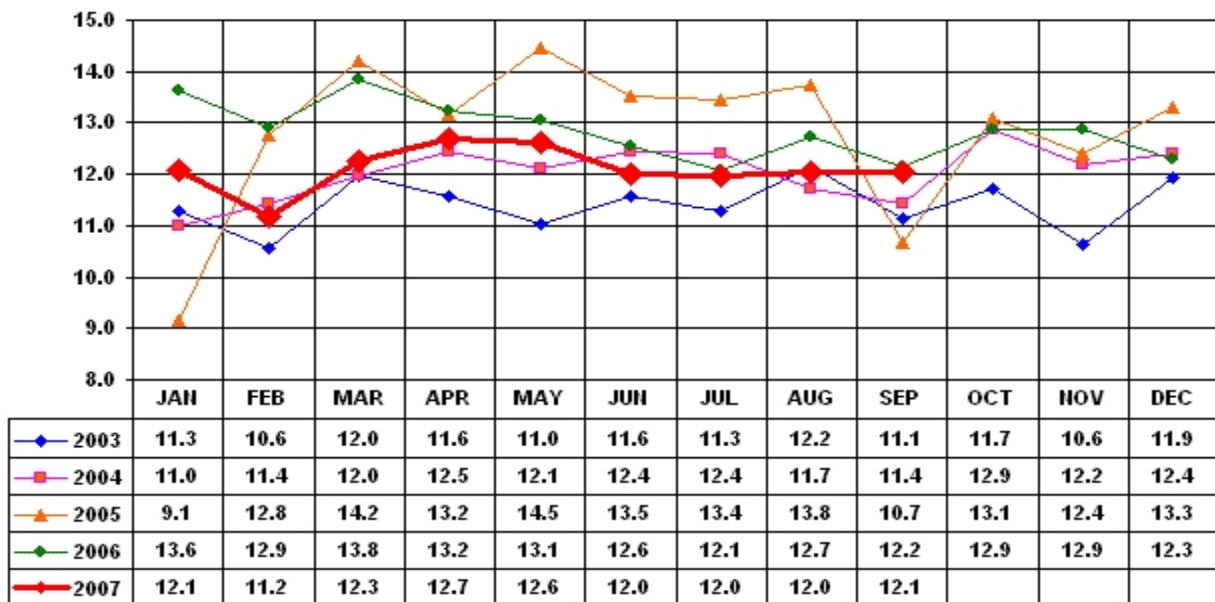
Source: Platts Metals Week

### Trade Tech's Uranium (UF6) Monthly Spot Prices (US\$/kg as UF6)

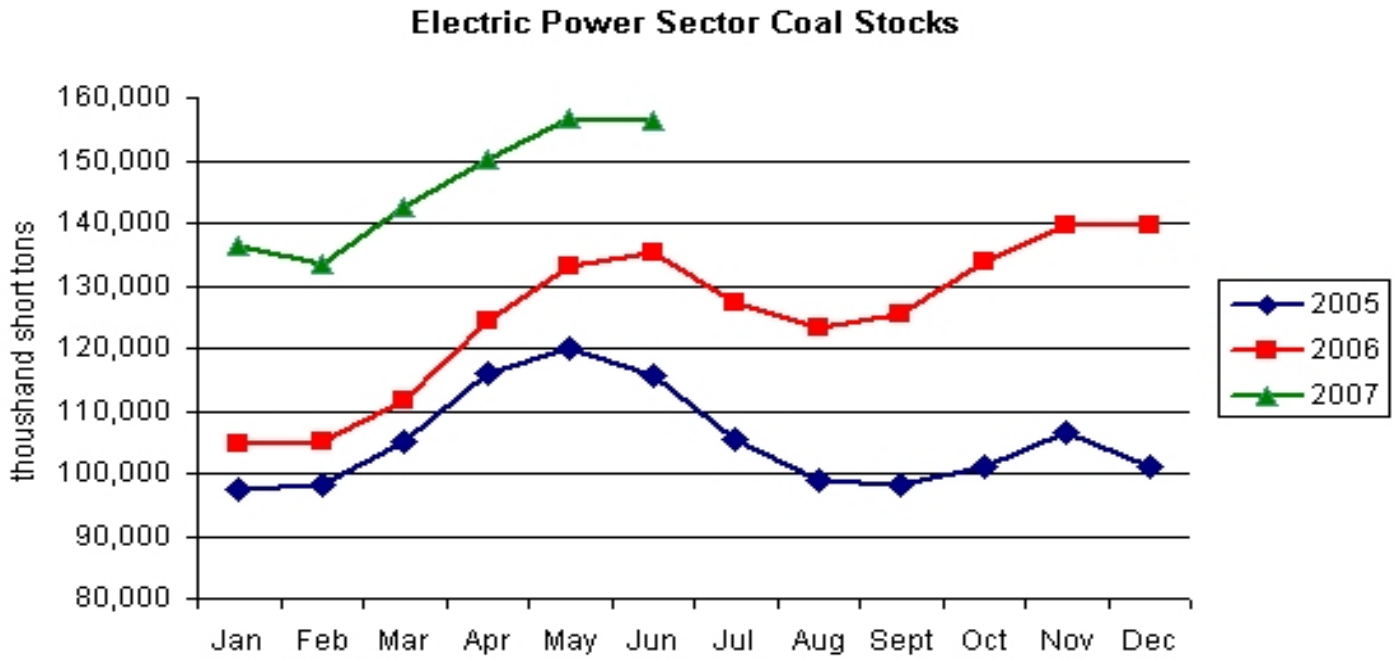


Source: Trade Tech, Uranium Info Website – <http://www.uranium.info>

### Coal and Coke Monthly Tonnage Indicator for Internal U.S. Waterways



Source: U.S. Army Corps of engineers, Waterborne Commerce Statistics Center



Source: Energy Information Administration