

---

National Mining Association

# Weekly Statistical Summary

Revised 01/06/09

January 2, 2009 Edition  
(Data for Week Ending December 27, 2008)

Prepared by  
National Mining Association



Suite 500 East, 101 Constitution Avenue, NW  
Washington, DC, 20001  
Phone (202) 463-2600  
Visit us at <http://www.nma.org>

# NMA Weekly Statistical Summary

Vol. 46, No. 52  
Dated 01/02/09

PRODUCTION, CONSUMPTION & TRADE						
	Week Ended			* Cumulative Jan 1 to		
	12/27/08	12/29/07	% Chng	12/27/08	12/27/07	% Chng
<b>EIA Coal Production (000 Tons):</b>						
Week Ended/Year to Date	19,161	19,704	-2.8%	1,156,715	1,135,170	1.9%
52 Weeks Ended	1,162,269	1,142,807	1.7%			
* Due to leap year, 2008 cumulative reflects one extra day of tonnage.						
	November 08/07		% Chng	Jan - Nov 08/07		% Chng
<b>Month Ended -- November</b>	94,991	96,910	-2.0%	1,070,917	1,053,497	1.7%
MONTH ENDED AND CUMULATIVE NUMBERS ARE PRELIMINARY AND SUBJECT TO CHANGE						
DOC Bituminous Coal Trade (000 Tons)						
	Oct 08/07		% Chng	Jan - Oct 08/07		% Chng
<b>Exports:</b>						
Metallurgical	4,494	2,575	74.5%	36,727	26,432	38.9%
Steam	3,827	2,319	65.0%	30,367	20,155	50.7%
<b>Imports:</b>	2,921	2,896	0.9%	28,028	30,646	-8.5%
	Week Ended			* Cumulative Jan 1 to		
	12/27/08	12/29/07	% Chng	12/27/08	12/29/07	% Chng
<b>EEl Electric Output (Mil. Kwh)</b>	77,710	74,832	3.8%	4,062,716	4,100,612	-0.9%
<b>AISI Raw Steel Output (000 Tons)</b>	800	n/a	n/a	n/a	n/a	n/a
Data not available for AISI Raw Steel						
EIA U.S. PETROLEUM DATA						
4-Week Averages 000 Barrels per Day						
	Week Ending			Cumulative Daily Averages		
	12/26/08	12/26/07	% Chng	2008	2007	% Chng
<b>PETROLEUM SUPPLY:</b>						
Domestic Crude	5,018	5,052	-0.7	4,951	5,064	-2.2
Net Imports (Incl. SPR)	9,472	9,831	-3.7	9,743	10,000	-2.6
SPR Stocks W/D or Added	0	-46	--	-12	-22	--
Other Stocks W/D or added	59	414	--	-99	66	--
Natural Gas Liquids Prod.	2,385	2,485	-4.0	2,274	2,412	-5.7



**NMA**

THE AMERICAN RESOURCE National Mining Association Web Site: [http:// www.nma.org](http://www.nma.org)

## EIA Estimated Weekly U.S. Coal Production Overview (Thousand Short Tons)

Coal-Producing Region and State	Week Ended			Year to Date			52 Weeks Ended		
	12/27/2008	12/20/2008	12/29/2007	12/27/2008	12/27/2007	Percent Change	12/27/2008	12/29/2007	Percent Change
Alabama	316	371	325	20,547	19,331	6.3	20,617	19,453	6.0
Alaska	21	25	19	1,352	1,314	2.9	1,357	1,319	2.9
Arizona	123	144	127	7,934	7,910	0.3	7,963	7,954	0.1
Arkansas	1	1	2	58	82	-28.6	59	82	-28.8
Colorado	545	639	591	33,332	36,050	-7.5	33,500	36,286	-7.7
Illinois	473	555	429	31,585	32,624	-3.2	31,698	32,771	-3.3
Indiana	571	670	575	35,638	34,674	2.8	35,776	34,887	2.6
Kansas	5	5	6	284	417	-31.9	285	419	-32.0
<b>Kentucky Total</b>	<b>1,752</b>	<b>2,056</b>	<b>1,862</b>	<b>117,576</b>	<b>114,507</b>	<b>2.7</b>	<b>118,037</b>	<b>115,120</b>	<b>2.5</b>
Eastern	1,306	1,534	1,399	88,487	86,498	2.3	88,830	86,947	2.2
Western	445	522	463	29,089	28,010	3.9	29,207	28,173	3.7
Louisiana	78	84	75	3,890	3,076	26.5	3,920	3,104	26.3
Maryland	44	52	24	2,528	2,289	10.4	2,534	2,296	10.4
Mississippi	32	38	65	2,717	3,507	-22.5	2,734	3,534	-22.6
Missouri	5	5	4	249	234	6.4	250	235	6.1
Montana	700	821	822	43,779	42,922	2.0	44,016	43,245	1.8
New Mexico	484	568	398	27,210	24,222	12.3	27,303	24,368	12.0
North Dakota	464	545	500	29,285	29,314	-0.1	29,393	29,498	-0.4
Ohio	380	446	407	25,223	22,340	12.9	25,320	22,493	12.6
Oklahoma	28	33	26	1,452	1,633	-11.1	1,458	1,642	-11.2
<b>Pennsylvania Total</b>	<b>973</b>	<b>1,142</b>	<b>1,040</b>	<b>63,762</b>	<b>64,600</b>	<b>-1.3</b>	<b>64,005</b>	<b>64,966</b>	<b>-1.5</b>
Anthracite	17	20	26	1,512	1,554	-2.7	1,518	1,563	-2.9
Bituminous	956	1,123	1,014	62,250	63,045	-1.3	62,487	63,404	-1.4
Tennessee	41	48	44	2,415	2,632	-8.3	2,426	2,643	-8.2
Texas	594	697	708	38,064	41,537	-8.4	38,266	41,843	-8.5
Utah	368	432	416	23,513	24,085	-2.4	23,620	24,213	-2.5
Virginia	409	480	320	24,500	25,284	-3.1	24,580	25,400	-3.2
Washington	--	--	--	--	--	--	0	s	-100.0
<b>West Virginia Total</b>	<b>2,465</b>	<b>2,894</b>	<b>2,483</b>	<b>157,456</b>	<b>152,133</b>	<b>3.5</b>	<b>158,071</b>	<b>152,999</b>	<b>3.3</b>
Northern	641	752	636	40,197	41,883	-4.0	40,364	42,075	-4.1
Southern	1,825	2,142	1,847	117,259	110,249	6.4	117,706	110,924	6.1
Wyoming	8,292	8,993	8,438	462,367	448,453	3.1	465,084	452,037	2.9
<b>Appalachian Total</b>	<b>5,935</b>	<b>6,967</b>	<b>6,041</b>	<b>384,917</b>	<b>375,105</b>	<b>2.6</b>	<b>386,382</b>	<b>377,198</b>	<b>2.4</b>
<b>Interior Total</b>	<b>2,230</b>	<b>2,612</b>	<b>2,352</b>	<b>143,026</b>	<b>145,794</b>	<b>-1.9</b>	<b>143,653</b>	<b>146,690</b>	<b>-2.1</b>
<b>Western Total</b>	<b>10,996</b>	<b>12,168</b>	<b>11,311</b>	<b>628,772</b>	<b>614,271</b>	<b>2.4</b>	<b>632,234</b>	<b>618,919</b>	<b>2.2</b>
<b>East of Miss. River</b>	<b>7,456</b>	<b>8,753</b>	<b>7,573</b>	<b>483,947</b>	<b>473,920</b>	<b>2.1</b>	<b>485,798</b>	<b>476,562</b>	<b>1.9</b>
<b>West of Miss. River</b>	<b>11,706</b>	<b>12,993</b>	<b>12,131</b>	<b>672,769</b>	<b>661,249</b>	<b>1.7</b>	<b>676,472</b>	<b>666,245</b>	<b>1.5</b>
Bituminous and Lignite	19,144	21,727	19,679	1,155,204	1,133,615	1.9	1,160,752	1,141,245	1.7
Anthracite	17	20	26	1,512	1,554	-2.7	1,518	1,563	-2.9
<b>U.S. Total</b>	<b>19,161</b>	<b>21,746</b>	<b>19,704</b>	<b>1,156,715</b>	<b>1,135,170</b>	<b>1.9</b>	<b>1,162,269</b>	<b>1,142,807</b>	<b>1.7</b>
Railroad Cars Loaded	113,279	138,598	122,168	7,652,569	7,404,032	3.4	7,652,569	7,404,032	3.4

Source: Energy Information Administration



Volume 76 No. 52

**OUTPUT FOR WEEK ENDED - Dec 27, 2008**

**Dec 31, 2008**

The net available amount of electric energy distributed by the Total Electric Utility Industry+ for the week ended Saturday, Dec 27, 2008 was 77,710 gigawatthours (GWh), according to the Edison Electric Institute. This is equivalent to 184 on the weekly electric output index.

**WEEKLY ELECTRIC OUTPUT BY GEOGRAPHIC DIVISION**

(48 CONTIGUOUS STATES)

	Week Ended December 27		52 Weeks Ended December 27	
	GWh Output	% Increase Over Corresponding Week of 2007	GWh Output	% Increase Over Corresponding Period of 2007
New England	2,566	3.6	130,792	-2.7
Mid-Atlantic	8,866	7.9	451,037	-1.7
Central Industrial	13,773	8.4	708,541	-1.9
West Central	6,694	5.1	345,438	-1.9
Southeast	19,934	1.4	1,090,254	-1.5
South Central	10,520	-3.8	601,083	0.5
Rocky Mountain	5,729	5.6	276,488	-0.3
Pacific Northwest	4,480	15.2	167,676	5.4
Pacific Southwest	5,148	-0.1	291,407	-0.1
Total United States	77,710	3.8	4,062,716	-0.9

**WEEKLY ELECTRIC OUTPUT IN PREVIOUS WEEKS--GWh**

Week Ended	2008	Week Ended	2007	% Inc. (08/07)	52 Weeks Ended	2008	% Inc. (08/07)
Dec 06	77,524	Dec 08	79,689	-2.7	Dec 06	4,061,003	-0.7
Dec 13	79,537	Dec 15	79,780	-0.3	Dec 13	4,060,760	-0.8
Dec 20	79,709	Dec 22	80,631	-1.1	Dec 20	4,059,838	-0.9
Dec 27	77,710	Dec 29	74,832	3.8	Dec 27	4,062,716	-0.9
Dec 27	4,062,716	Dec 29	4,100,612	-0.9	<b>YEAR TO DATE, FIRST 52 WEEKS</b>		

**WEEKLY ELECTRIC OUTPUT INDEX--TOTAL U.S.\***

SEASONALLY ADJUSTED 1982 = 100

Week Ended	2008	Week Ended	2007	Week Ended	2006
Dec 06	179	Dec 08	184	Dec 09	192
Dec 13	181	Dec 15	180	Dec 16	173
Dec 20	182	Dec 22	180	Dec 23	170
Dec 27	184	Dec 29	175	Dec 30	169

\* Excludes Alaska and Hawaii

+ Includes investor-owned companies, cooperatives and government-owned utilities.

Copyright © 2008 Edison Electric Institute. All rights reserved.

### WEEKLY ELECTRIC OUTPUT BY GEOGRAPHIC DIVISION (48 CONTIGUOUS STATES)

	Week Ended			NMA CUMULATIVE JANUARY WEEK ONE TO			52 Weeks Ended		
	27-Dec 2008 GWh Output	29-Dec 2007 GWh Output	% Increase Over Corresponding Week of 2007	27-Dec 2008 GWh Output	29-Dec 2007 GWh Output	% Increase Over Corresponding Week of 2007	27-Dec 2008 GWh Output	29-Dec 2007 GWh Output	% Increase Over Corresponding Week of 2007
<b>New England</b>	2,566	2,477	3.6%	<b>130,791</b>	<b>134,445</b>	<b>-2.7%</b>	130,792	134,446	-2.7%
<b>Mid-Atlantic</b>	8,866	8,220	7.9%	<b>451,041</b>	<b>458,669</b>	<b>-1.7%</b>	451,037	458,670	-1.7%
<b>Central Industrial</b>	13,773	12,708	8.4%	<b>708,541</b>	<b>722,138</b>	<b>-1.9%</b>	708,541	722,139	-1.9%
<b>West Central</b>	6,694	6,369	5.1%	<b>345,441</b>	<b>352,217</b>	<b>-1.9%</b>	345,438	352,217	-1.9%
<b>Southeast</b>	19,934	19,655	1.4%	<b>1,090,254</b>	<b>1,106,657</b>	<b>-1.5%</b>	1,090,254	1,106,658	-1.5%
<b>South Central</b>	10,520	10,938	-3.8%	<b>601,082</b>	<b>598,137</b>	<b>0.5%</b>	601,083	598,137	0.5%
<b>Rocky Mountain</b>	5,729	5,423	5.6%	<b>276,487</b>	<b>277,428</b>	<b>-0.3%</b>	276,488	277,430	-0.3%
<b>Pacific Northwest</b>	4,480	3,890	15.2%	<b>167,675</b>	<b>159,080</b>	<b>5.4%</b>	167,676	159,077	5.4%
<b>Pacific Southwest</b>	5,148	5,152	-0.1%	<b>291,407</b>	<b>291,841</b>	<b>-0.1%</b>	291,407	291,839	-0.1%
<b>Total United States *</b>	<u>77,710</u>	<u>74,832</u>	3.8%	<b>4,062,719</b>	<b>4,100,612</b>	<b>-0.9%</b>	4,062,716	4,100,613	-0.9%

**Notes:** EEI output data are an estimate of electricity load made available for distribution derived as weekly net generation + purchases from non-utilities + net imports - exports - sales for resale. It is not meant to be a measure of electricity generation for the U.S. EEI survey data represent the majority of national distribution (large utilities, large government power projects, some independent and large municipal power projects). The remaining segment of the industry (smaller producers) is estimated. Non-utility generation is captured via direct sales to utilities.

\* Excludes Alaska and Hawaii

\*\* Less than one-tenth of one percent

SOURCE: Edison Electric Institute (EEI), *Weekly Electric Output Report*.

AMERICAN IRON AND STEEL INSTITUTE  
 1140 Connecticut Avenue, Suite 705  
 Washington, D.C. 20036

January 5, 2009

**ESTIMATED WEEKLY RAW STEEL\* PRODUCTION**

Period	Thousand Net Tons	Percent Change from Previous Period	Percent Capability Utilization**	Production by District		
				Week Ending Jan. 3	Week Ending Dec. 27	
<b>Week Ending</b>				North East Coast	91	90
January 3, 2009	866	8.3	36.3	Pgh/Youngstown	98	80
January 3, 2008	2,128	-59.3	88.7	Lake Erie	18	16
December 27, 2008	800	-21.8	33.5	Detroit	28	28
				Indiana/Chicago	257	238
				Midwest	106	98
				Southern	226	215
				Western	42	35
				<b>Total</b>	<b>866</b>	<b>800</b>

\*Raw steel production tonnage included in this report is estimated based on a sampling of steel producers. Therefore, this report should be used primarily to assess production trends. The AISI production report "AIS 7," produced monthly and available by subscription, provides a more accurate summary of steel production based on data supplied by companies representing approximately 75% of U.S. production capacity.  
 + Includes revisions for previous months

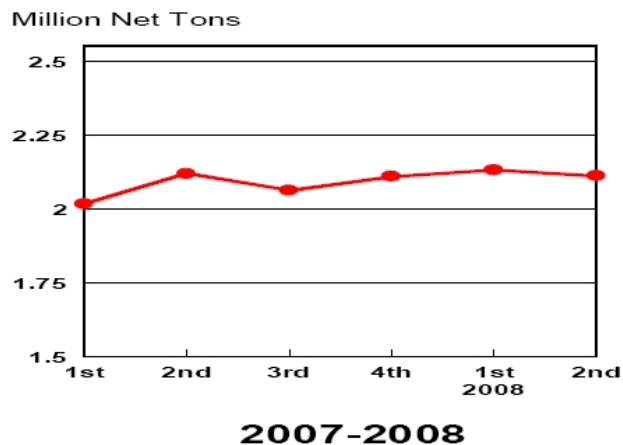
NOTE: Capability for the Third Quarter 2008 is approximately 31.4 million net tons vs 30.1 million net tons for the same period last year, and 31.0 million tons for the second quarter of 2008.

Capability -	2004 approx.	2.2 million tons/week
	2005	2.3
	2006	2.4
	2007	2.4
	2008	2.4

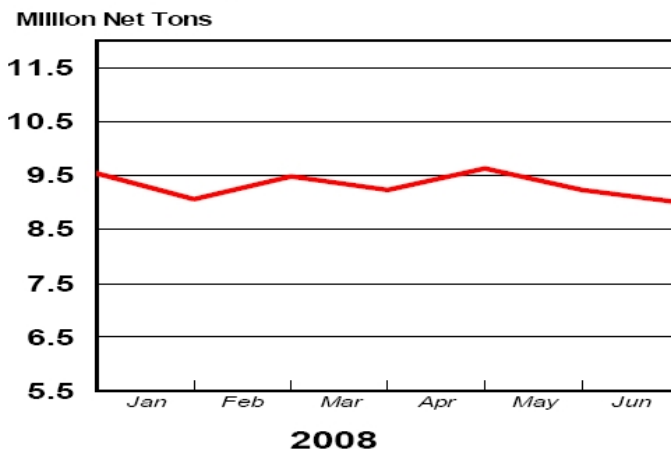
\*Steel in the first solid state after melting suitable for further processing or sale, including ingots, steel for castings and strand or pressure cast blooms, slabs, or other product forms.

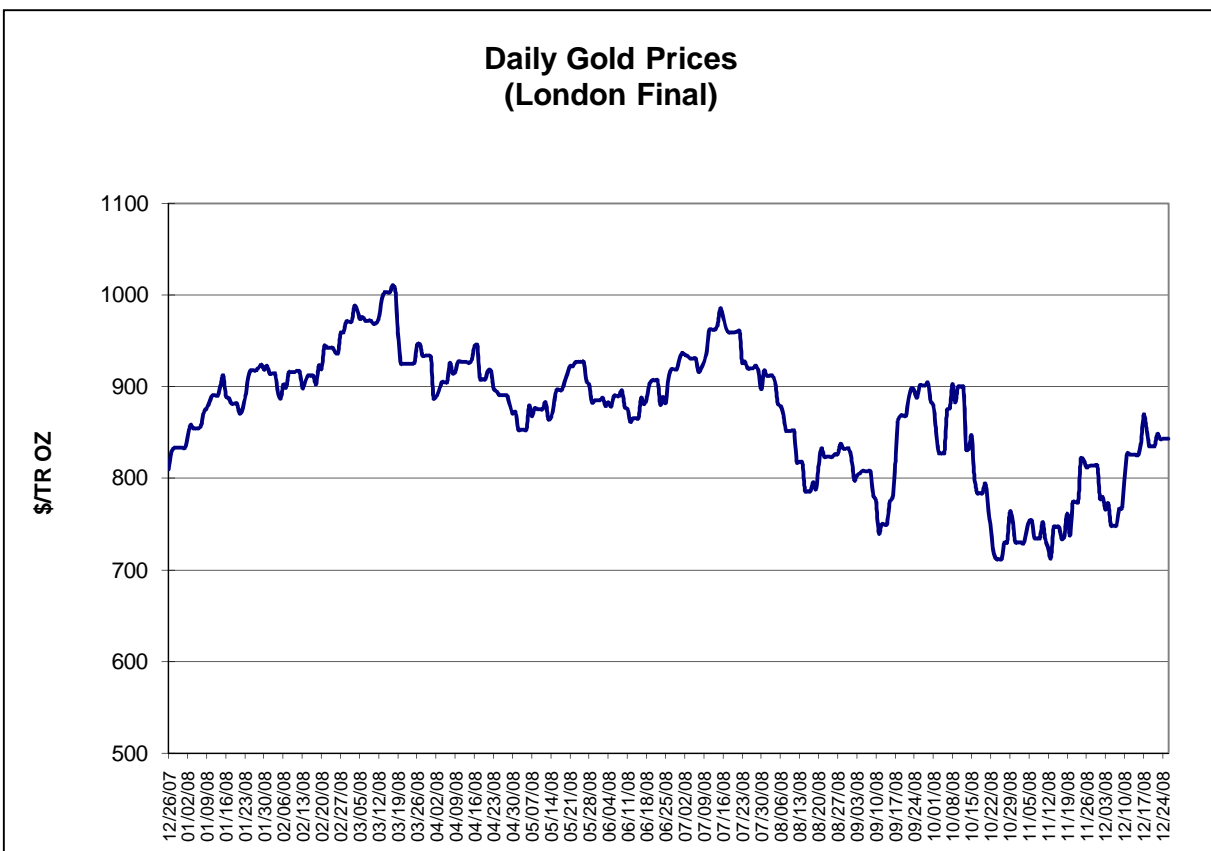
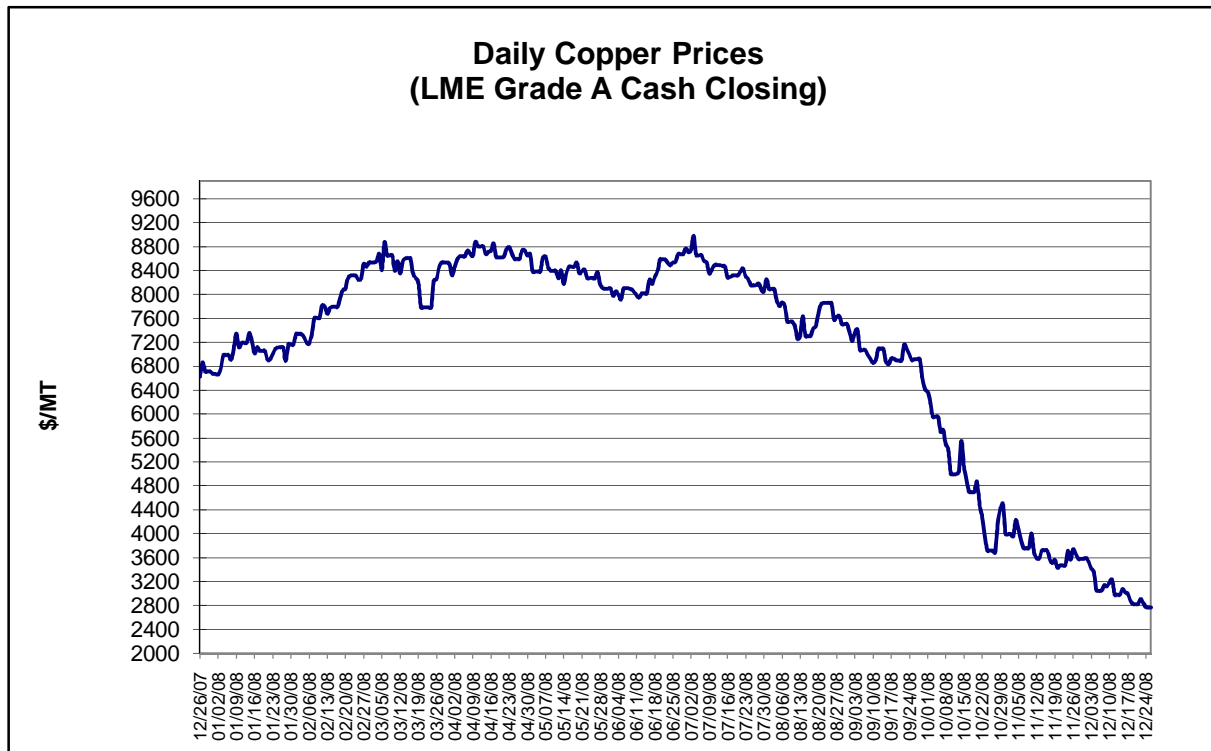
\*\* Based on tonnage capability to produce raw steel for a sustained full order book.

**Average Weekly Raw Steel Production**



**Monthly Raw Steel Production**

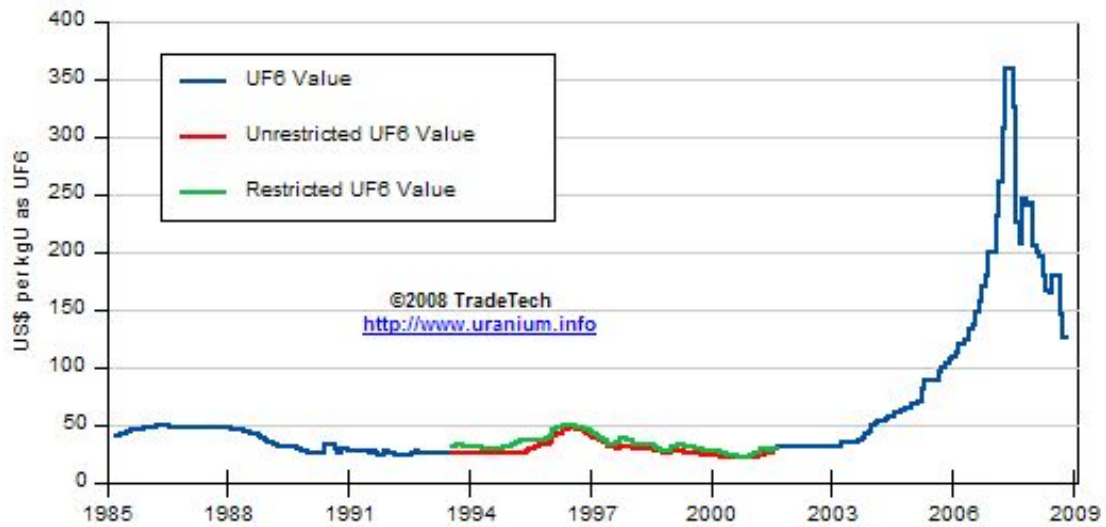




Data reflect closings on weekends and holidays.

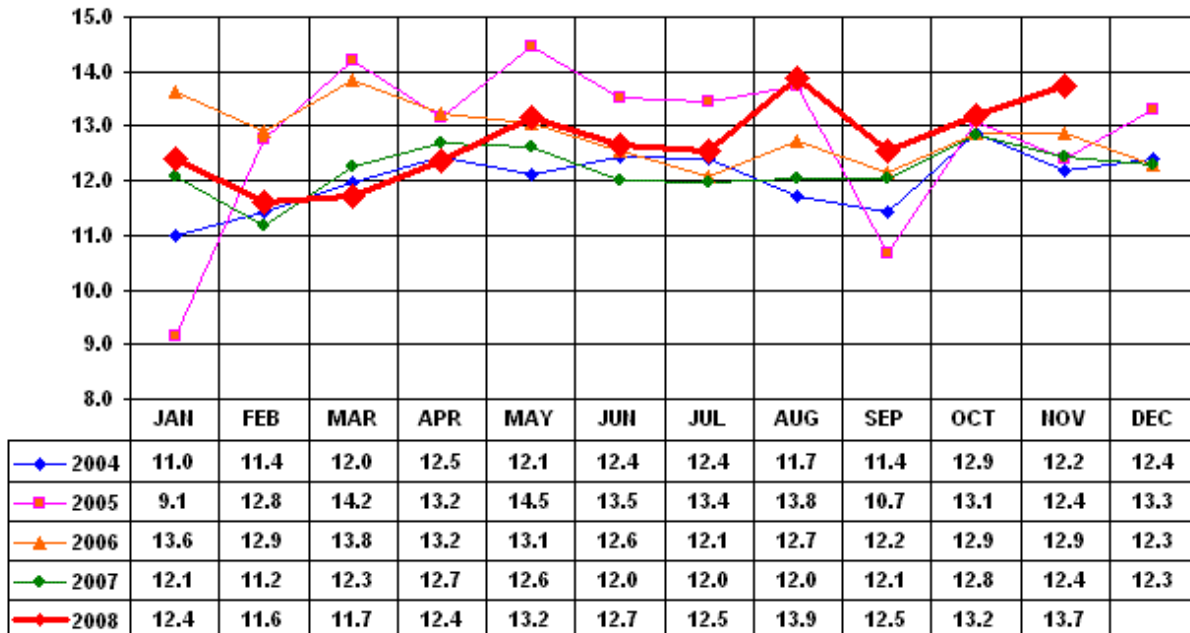
Source: Platts Metals Week

### Trade Tech's Uranium (UF6) Monthly Spot Prices (US\$/kg as UF6)



Source: Trade Tech, Uranium Info Website – <http://www.uranium.info>

### Coal and Coke Monthly Tonnage Indicator for Internal U.S. Waterways

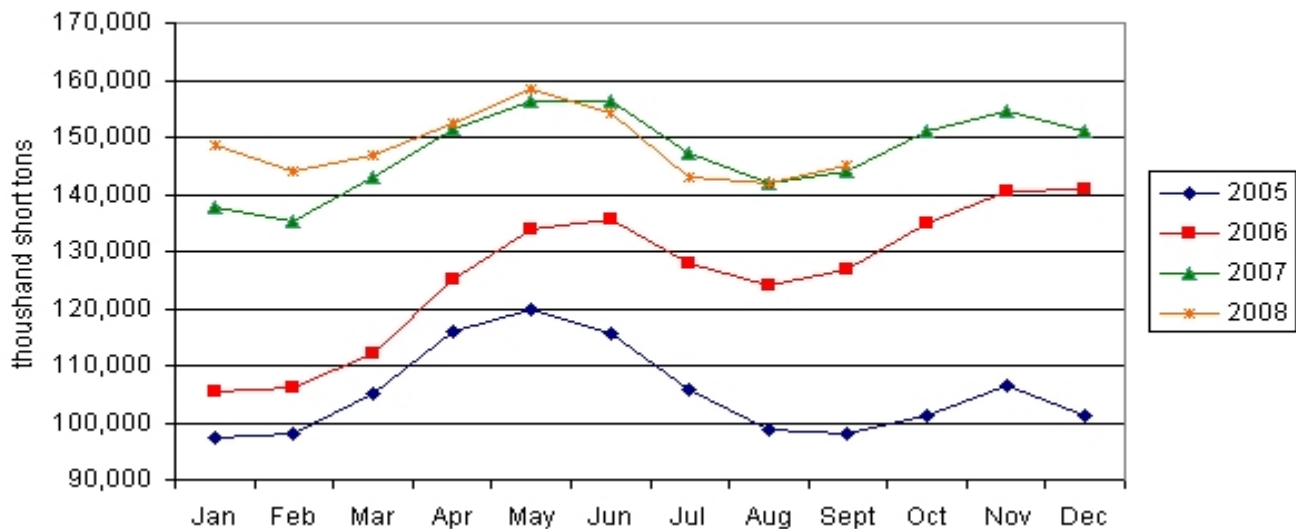


Source: U.S. Army Corps of Engineers, Waterborne Commerce Statistics Center

Average Weekly Coal Commodity Spot Prices (Dollars per Short Ton)					
Week Ended	Central Appalachia 12,500 Btu, 1.2 SO2	Northern Appalachia 13,000 Btu, <3.0 SO2	Illinois Basin 11,800 Btu, 5.0 SO2	Powder River Basin 8,800 Btu, 0.8 SO2	Uinta Basin 11,700 Btu, 0.8 SO2
07-Nov-08	\$119.25	\$111.50	\$84.00	\$14.50	\$73.00
14-Nov-08	\$111.15	\$111.50	\$84.00	\$14.50	\$73.00
21-Nov-08	\$111.15	\$111.50	\$84.00	\$14.50	\$73.00
28-Nov-08	\$111.15	\$101.50	\$83.00	\$14.50	\$73.00
05-Dec-08	\$89.80	\$101.50	\$78.00	\$12.50	\$73.00
12-Dec-08	\$81.55	\$101.50	\$78.00	\$12.50	\$73.00
19-Dec-08	\$81.55	\$101.50	\$78.00	\$13.00	\$73.00
2-Jan-09	\$80.85	\$88.75	\$78.00	\$13.00	\$73.00

Source: Energy Information Administration (from Platts *Coal Outlook*, "Weekly Price Survey")

### EIA Electric Power Sector Coal Stocks



Source: Energy Information Administration, *Coal News and Markets Report*

<b>USGS Production of Selected Mineral Commodities</b>	<b>2008 Year to Date - 3rd Quarter</b>	<b>2007 Year to Date - 3rd Quarter</b>	<b>Percent Change</b>
Aluminum, secondary (000 Mt.)	729.0	708.0	3%
Cement (Mil. Mt.)	65.6	70.0	-6%
Gypsum (Mil. Mt.)	14.1	16.4	-14%
Iron Ore (Mil. Mt.)	40.9	38.6	6%
Phosphate rock (Mil. Mt.)	23.0	22.1	4%
Sand & gravel, construction (Mil. Mt.)	754.0	940.0	-20%
Soda ash (Mil. Mt.)	8.4	8.3	1%
Stone, crushed (Mil. Mt.)	1,020.0	1,220.0	-16%
Zinc (000 Mt.)	628.0	574.0	9%

Source: U.S. Geological Survey, Mineral Industry Surveys, *U.S. Production of Selected Mineral Commodities in the Third Quarter 2008, November 2008*

<b>AAR U.S. Rail Traffic for Selected Commodities - Carloadings (000)</b>	<b>2008 Year to Date - Dec. 27</b>	<b>2007 Year to Date - Dec. 27</b>	<b>Percent Change</b>
Agricultural Products	2,161	2,151	0.5%
Chemicals	1,850	1,903	-2.8%
Coal	7,466	7,215	3.5%
Forest Products	657	743	-11.6%
Metallic Ores & Metals	1,169	1,291	-9.5%
Motor Vehicles & Equipment	814	1,034	-21.3%
Non-metallic Minerals & Products	1,693	1,853	-8.6%

Source: Association of American Rainroads, *Weekly Railroad Traffic*