
National Mining Association

Weekly Statistical Summary

December 12, 2008 Edition
(Data for Week Ending December 6, 2008)

Prepared by
National Mining Association



Suite 500 East, 101 Constitution Avenue, NW
Washington, DC, 20001
Phone (202) 463-2600
Visit us at <http://www.nma.org>

NMA Weekly Statistical Summary

Vol. 46, No. 49
Dated 12/12/08

PRODUCTION, CONSUMPTION & TRADE						
	Week Ended			* Cumulative Jan 1 to		
	12/06/08	12/08/07	% Chng	12/06/08	12/06/07	% Chng
EIA Coal Production (000 Tons):						
Week Ended/Year to Date	23,409	22,422	4.4%	1,092,503	1,072,202	1.9%
52 Weeks Ended	1,161,400	1,145,989	1.3%			
* Due to leap year, 2008 cumulative reflects one extra day of tonnage.						
	November 08/07		% Chng	Jan - Nov 08/07		% Chng
Month Ended -- November	94,991	96,910	-2.0%	1,070,917	1,053,497	1.7%
MONTH ENDED AND CUMULATIVE NUMBERS ARE PRELIMINARY AND SUBJECT TO CHANGE						
DOC Bituminous Coal Trade (000 Tons)						
	Sep 08/07		% Chng	Jan - Sep 08/07		% Chng
Exports:						
Metallurgical	4,744	2,731	73.7%	32,233	23,856	35.1%
Steam	3,850	2,139	80.0%	26,540	17,836	48.8%
Imports:	3,144	3,716	-15.4%	22,335	24,280	-8.0%
	Week Ended			* Cumulative Jan 1 to		
	12/06/08	12/08/07	% Chng	12/06/08	12/08/07	% Chng
EEl Electric Output (Mil. Kwh)	77,524	79,689	-2.7%	3,825,759	3,865,369	-1.0%
AISI Raw Steel Output (000 Tons)	1,182	2,101	-43.7%	97,129	101,002	-3.8%
EIA U.S. PETROLEUM DATA						
4-Week Averages						
000 Barrels per Day						
	Week Ending			Cumulative Daily Averages		
	12/05/08	12/05/07	% Chng	2008	2007	% Chng
PETROLEUM SUPPLY:						
Domestic Crude	5,055	5,023	0.6	4,949	5,065	-2.3
Net Imports (Incl. SPR)	10,046	9,944	1.0	9,769	10,011	-2.4
SPR Stocks W/D or Added	0	-46	--	-13	-21	--
Other Stocks W/D or added	-315	282	--	-111	43	--
Natural Gas Liquids Prod.	2,392	2,640	-9.4	2,267	2,408	-5.9



NMA

THE AMERICAN RESOURCE National Mining Association Web Site: [http:// www.nma.org](http://www.nma.org)

EIA Estimated Weekly U.S. Coal Production Overview (Thousand Short Tons)

Coal-Producing Region and State	Week Ended			Year to Date		Percent Change	52 Weeks Ended		Percent Change
	12/6/2008	11/29/2008	12/8/2007	12/6/2008	12/6/2007		12/6/2008	12/8/2007	
Alabama	397	374	382	19,454	18,275	6.5	20,624	19,326	6.7
Alaska	26	25	29	1,280	1,242	3.0	1,355	1,335	1.5
Arizona	154	146	139	7,509	7,505	*	7,958	7,982	-0.3
Arkansas	1	1	2	55	76	-27.5	61	80	-22.8
Colorado	684	646	691	31,449	34,039	-7.6	33,611	36,329	-7.5
Illinois	594	561	519	29,949	31,161	-3.9	31,528	33,165	-4.9
Indiana	717	677	656	33,665	32,795	2.7	35,729	34,951	2.2
Kansas	6	5	8	268	396	-32.3	291	434	-33.0
Kentucky Total	2,201	2,077	2,191	111,518	108,296	3.0	118,283	115,219	2.7
Eastern	1,641	1,549	1,643	83,968	81,841	2.6	89,045	87,091	2.2
Western	559	528	548	27,549	26,454	4.1	29,238	28,128	3.9
Louisiana	90	90	93	3,641	2,833	28.5	3,910	3,175	23.2
Maryland	56	52	50	2,375	2,182	8.8	2,483	2,345	5.9
Mississippi	52	0	74	2,607	3,345	-22.1	2,788	3,591	-22.4
Missouri	6	6	5	233	221	5.2	247	238	3.7
Montana	879	830	925	41,359	40,162	3.0	44,335	42,897	3.4
New Mexico	608	574	486	25,536	22,889	11.6	26,995	24,520	10.1
North Dakota	583	550	577	27,679	27,701	-0.1	29,469	29,600	-0.4
Ohio	477	451	454	23,909	21,026	13.7	25,358	22,375	13.3
Oklahoma	35	33	31	1,356	1,549	-12.4	1,449	1,655	-12.4
Pennsylvania Total	1,222	1,154	1,219	60,397	61,175	-1.3	64,156	65,067	-1.4
Anthracite	21	20	32	1,454	1,467	-0.9	1,549	1,563	-0.9
Bituminous	1,201	1,134	1,187	58,943	59,708	-1.3	62,607	63,504	-1.4
Tennessee	52	49	53	2,273	2,483	-8.5	2,434	2,639	-7.8
Texas	746	704	846	36,010	39,102	-7.9	38,622	41,957	-7.9
Utah	463	437	515	22,239	22,655	-1.8	23,780	24,301	-2.1
Virginia	514	485	419	23,084	24,162	-4.5	24,291	25,841	-6.0
Washington	--	--	--	--	--	--	0	s	-100.0
West Virginia Total	3,097	2,923	2,868	148,929	143,926	3.5	157,895	152,796	3.3
Northern	805	760	757	37,982	39,726	-4.4	40,310	42,077	-4.2
Southern	2,292	2,164	2,111	110,948	104,200	6.5	117,585	110,719	6.2
Wyoming	9,750	9,257	9,192	435,731	423,006	3.0	463,748	454,172	2.1
Appalachian Total	7,456	7,038	7,088	364,389	355,070	2.6	386,286	377,480	2.3
Interior Total	2,806	2,605	2,780	135,333	137,931	-1.9	143,863	147,373	-2.4
Western Total	13,147	12,464	12,554	592,782	579,201	2.3	631,252	621,136	1.6
East of Miss. River	9,378	8,803	8,884	458,159	448,825	2.1	485,569	477,315	1.7
West of Miss. River	14,031	13,303	13,538	634,344	623,377	1.8	675,832	668,674	1.1
Bituminous and Lignite	23,389	22,087	22,389	1,091,049	1,070,735	1.9	1,159,851	1,144,426	1.3
Anthracite	21	20	32	1,454	1,467	-0.9	1,549	1,563	-0.9
U.S. Total	23,409	22,106	22,422	1,092,503	1,072,202	1.9	1,161,400	1,145,989	1.3
Railroad Cars Loaded	154,595	142,571	146,175	7,247,314	6,999,840	3.5	7,651,506	7,424,747	3.1

Source: Energy Information Administration

EIA Estimated Monthly U.S. Coal Production Overview (Thousand Short Tons)

Coal-Producing Region and State	Week Ended		Year to Date		Month Ended		January - November		Percent Change
	12/6/2008	12/8/2007	12/6/2008	12/6/2007	November 2008	November 2007	2008	2007	
Alabama	397	382	19,454	18,275	1,585	1,661	19,060	17,969	6.1
Alaska	26	29	1,280	1,242	104	126	1,253	1,219	2.8
Arizona	154	139	7,509	7,505	615	607	7,355	7,394	-0.5
Arkansas	1	2	55	76	4	7	54	75	-27.6
Colorado	684	691	31,449	34,039	2,870	2,949	30,837	33,455	-7.8
Illinois	594	519	29,949	31,161	2,417	2,244	29,378	30,737	-4.4
Indiana	717	656	33,665	32,795	2,903	2,843	32,972	32,260	2.2
Kansas	6	8	268	396	23	35	262	389	-32.7
Kentucky Total	2,201	2,191	111,518	108,296	8,870	9,508	109,369	106,521	2.7
Eastern	1,641	1,643	83,968	81,841	6,592	7,142	82,353	80,515	2.3
Western	559	548	27,549	26,454	2,279	2,366	27,016	26,005	3.9
Louisiana	90	93	3,641	2,833	399	375	3,560	2,755	29.2
Maryland	56	50	2,375	2,182	222	216	2,320	2,142	8.3
Mississippi	52	74	2,607	3,345	65	216	2,561	3,285	-22.0
Missouri	6	5	233	221	23	21	227	217	4.4
Montana	879	925	41,359	40,162	3,714	3,937	40,585	39,374	3.1
New Mexico	608	486	25,536	22,889	2,447	2,110	24,940	22,496	10.9
North Dakota	583	577	27,679	27,701	2,323	2,516	27,096	27,240	-0.5
Ohio	477	454	23,909	21,026	1,936	1,964	23,448	20,656	13.5
Oklahoma	35	31	1,356	1,549	139	134	1,321	1,524	-13.3
Pennsylvania Total	1,222	1,219	60,397	61,175	4,910	5,299	59,194	60,191	-1.7
Anthracite	21	32	1,454	1,467	84	141	1,433	1,441	-0.5
Bituminous	1,201	1,187	58,943	59,708	4,826	5,158	57,761	58,750	-1.7
Tennessee	52	53	2,273	2,483	206	232	2,221	2,440	-9.0
Texas	746	846	36,010	39,102	3,166	3,597	35,360	38,376	-7.9
Utah	463	515	22,239	22,655	1,865	2,235	21,788	22,237	-2.0
Virginia	514	419	23,084	24,162	2,085	1,816	22,588	23,820	-5.2
Washington	--	--	--	--	--	--	--	--	--
West Virginia Total	3,097	2,868	148,929	143,926	12,545	12,421	145,935	141,590	3.1
Northern	805	757	37,982	39,726	3,253	3,280	37,200	39,111	-4.9
Southern	2,292	2,111	110,948	104,200	9,292	9,141	108,735	102,479	6.1
Wyoming	9,750	9,192	435,731	423,006	39,554	39,842	427,232	415,135	2.9
Appalachian Total	7,456	7,088	364,389	355,070	30,081	30,750	357,119	349,323	2.2
Interior Total	2,806	2,780	135,333	137,931	11,417	11,838	132,711	135,624	-2.1
Western Total	13,147	12,554	592,782	579,201	53,492	54,321	581,086	568,550	2.2
East of Miss. River	9,378	8,884	458,159	448,825	37,744	38,420	449,046	441,610	1.7
West of Miss. River	14,031	13,538	634,344	623,377	57,247	58,490	621,870	611,887	1.6
Bituminous and Lignite	23,389	22,389	1,091,049	1,070,735	94,907	96,769	1,069,483	1,052,056	1.7
Anthracite	21	32	1,454	1,467	84	141	1,433	1,441	-0.5
U.S. Total	23,409	22,422	1,092,503	1,072,202	94,991	96,910	1,070,917	1,053,497	1.7
Railroad Cars Loaded	154,595	146,175	7,247,314	6,999,840	--	--	--	--	--

Source: Energy Information Administration



WEEKLY ELECTRIC OUTPUT

Essential Energy Information from EEI's Statistics Department

Volume 76 No. 49

OUTPUT FOR WEEK ENDED - Dec 06, 2008

Dec 10, 2008

The net available amount of electric energy distributed by the Total Electric Utility Industry* for the week ended Saturday, Dec 06, 2008 was 77,524 gigawatthours (GWh), according to the Edison Electric Institute. This is equivalent to 179 on the weekly electric output index.

WEEKLY ELECTRIC OUTPUT BY GEOGRAPHIC DIVISION

(48 CONTIGUOUS STATES)

	Week Ended December 06		52 Weeks Ended December 06	
	GWh Output	% Increase Over Corresponding Week of 2007	GWh Output	% Increase Over Corresponding Period of 2007
New England	2,492	-9.8	131,045	-2.2
Mid-Atlantic	8,715	-7.2	450,732	-1.4
Central Industrial	14,116	-4.4	707,393	-1.8
West Central	6,682	-4.1	345,066	-1.7
Southeast	21,662	0.3	1,090,579	-1.1
South Central	10,367	3.1	601,728	0.9
Rocky Mountain	5,247	-3.2	276,288	0.1
Pacific Northwest	3,210	-7.2	166,929	5.6
Pacific Southwest	5,033	-4.4	291,243	-0.4
Total United States	77,524	-2.7	4,061,003	-0.7

WEEKLY ELECTRIC OUTPUT IN PREVIOUS WEEKS--GWh

Week Ended	2008	Week Ended	2007	% Inc. (08/07)	52 Weeks Ended	2008	% Inc. (08/07)
Nov 15	71,948	Nov 17	73,355	-1.9	Nov 15	4,061,983	-0.6
Nov 22	76,406	Nov 24	71,597	6.7	Nov 22	4,066,792	-0.5
Nov 29	72,608	Dec 01	76,233	-4.8	Nov 29	4,063,168	-0.7
Dec 06	77,524	Dec 08	79,689	-2.7	Dec 06	4,061,003	-0.7
Dec 06	3,825,759	Dec 08	3,865,369	-1.0	YEAR TO DATE, FIRST 49 WEEKS		

WEEKLY ELECTRIC OUTPUT INDEX--TOTAL U.S.*

SEASONALLY ADJUSTED 1982 = 100

Week Ended	2008	Week Ended	2007	Week Ended	2006
Nov 15	180	Nov 17	184	Nov 18	181
Nov 22	191	Nov 24	179	Nov 25	179
Nov 29	182	Dec 01	193	Dec 02	188
Dec 06	179	Dec 08	184	Dec 09	192

* Excludes Alaska and Hawaii.

+ Includes investor-owned companies, cooperatives and government-owned utilities.

Copyright © 2008 Edison Electric Institute. All rights reserved.

WEEKLY ELECTRIC OUTPUT BY GEOGRAPHIC DIVISION (48 CONTIGUOUS STATES)

	Week Ended			NMA CUMULATIVE JANUARY WEEK ONE TO			52 Weeks Ended		
	6-Dec 2008 GWh Output	8-Dec 2007 GWh Output	% Increase Over Corresponding Week of 2007	6-Dec 2008 GWh Output	8-Dec 2007 GWh Output	% Increase Over Corresponding Week of 2007	6-Dec 2008 GWh Output	8-Dec 2007 GWh Output	% Increase Over Corresponding Week of 2007
New England	2,492	2,762	-9.8%	123,032	126,433	-2.7%	131,045	134,002	-2.2%
Mid-Atlantic	8,715	9,387	-7.2%	424,210	432,143	-1.8%	450,732	456,949	-1.4%
Central Industrial	14,116	14,766	-4.4%	665,419	680,163	-2.2%	707,393	720,148	-1.8%
West Central	6,682	6,971	-4.1%	324,553	331,702	-2.2%	345,066	351,120	-1.7%
Southeast	21,662	21,604	0.3%	1,028,828	1,044,906	-1.5%	1,090,579	1,103,208	-1.1%
South Central	10,367	10,054	3.1%	569,108	565,516	0.6%	601,728	596,217	0.9%
Rocky Mountain	5,247	5,421	-3.2%	259,559	260,701	-0.4%	276,288	275,939	0.1%
Pacific Northwest	3,210	3,460	-7.2%	155,335	147,487	5.3%	166,929	158,043	5.6%
Pacific Southwest	5,033	5,264	-4.4%	275,719	276,318	-0.2%	291,243	292,383	-0.4%
Total United States *	<u>77,524</u>	<u>79,689</u>	-2.7%	<u>3,825,763</u>	<u>3,865,369</u>	-1.0%	<u>4,061,003</u>	<u>4,088,009</u>	-0.7%

Notes: EEI output data are an estimate of electricity load made available for distribution derived as weekly net generation + purchases from non-utilities + net imports - exports - sales for resale. It is not meant to be a measure of electricity generation for the U.S. EEI survey data represent the majority of national distribution (large utilities, large government power projects, some independent and large municipal power projects). The remaining segment of the industry (smaller producers) is estimated. Non-utility generation is captured via direct sales to utilities.

* Excludes Alaska and Hawaii

** Less than one-tenth of one percent

SOURCE: Edison Electric Institute (EEI), *Weekly Electric Output Report*.

AMERICAN IRON AND STEEL INSTITUTE
 1140 Connecticut Avenue, Suite 705
 Washington, D.C. 20036

December 8, 2008

ESTIMATED WEEKLY RAW STEEL* PRODUCTION

Period	Thousand Net Tons	Percent Change from Previous Period	Percent Capability Utilization**	Production by District		
				Week Ending		
				Dec. 6	Dec. 29	
Week Ending				North East Coast	87	93
December 6, 2008	1,182	-1.3	49.5	Pgh/Youngstown	126	115
December 6, 2007	2,102	-43.8	88.1	Lake Erie	20	46
November 29, 2008	1,197	-11.2	50.2	Detroit	62	71
				Indiana/Chicago	312	293
				Midwest	174	197
				Southern	347	329
				Western	54	53
				Total	1,182	1,197
Year-to-Date+						
December 6, 2008	97,129	-3.9	84.3			
December 6, 2007	101,002	-	87.0			

*Raw steel production tonnage included in this report is estimated based on a sampling of steel producers. Therefore, this report should be used primarily to assess production trends. The AISI production report "AIS 7," produced monthly and available by subscription, provides a more accurate summary of steel production based on data supplied by companies representing approximately 75% of U.S. production capacity.
 + Includes revisions for previous months

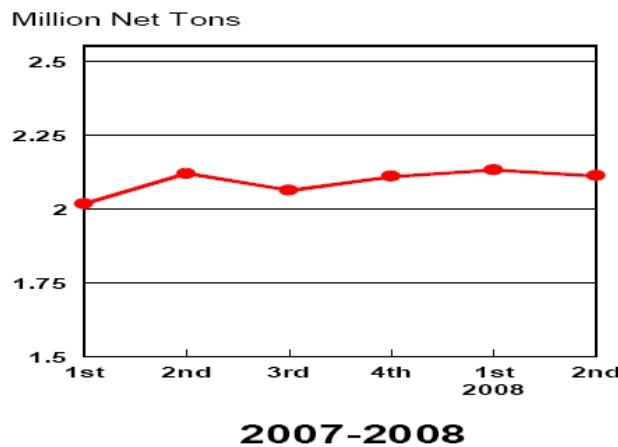
NOTE: Capability for the Third Quarter 2008 is approximately 31.4 million net tons vs 30.1 million net tons for the same period last year, and 31.0 million tons for the second quarter of 2008.

Capability -	2004 approx.	2.2 million tons/week
	2005	2.3
	2006	2.4
	2007	2.4
	2008	2.4

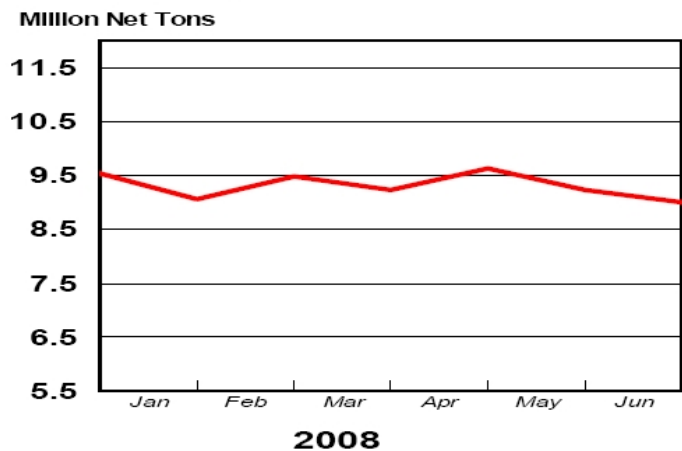
*Steel in the first solid state after melting suitable for further processing or sale, including ingots, steel for castings and strand or pressure cast blooms, slabs, or other product forms.

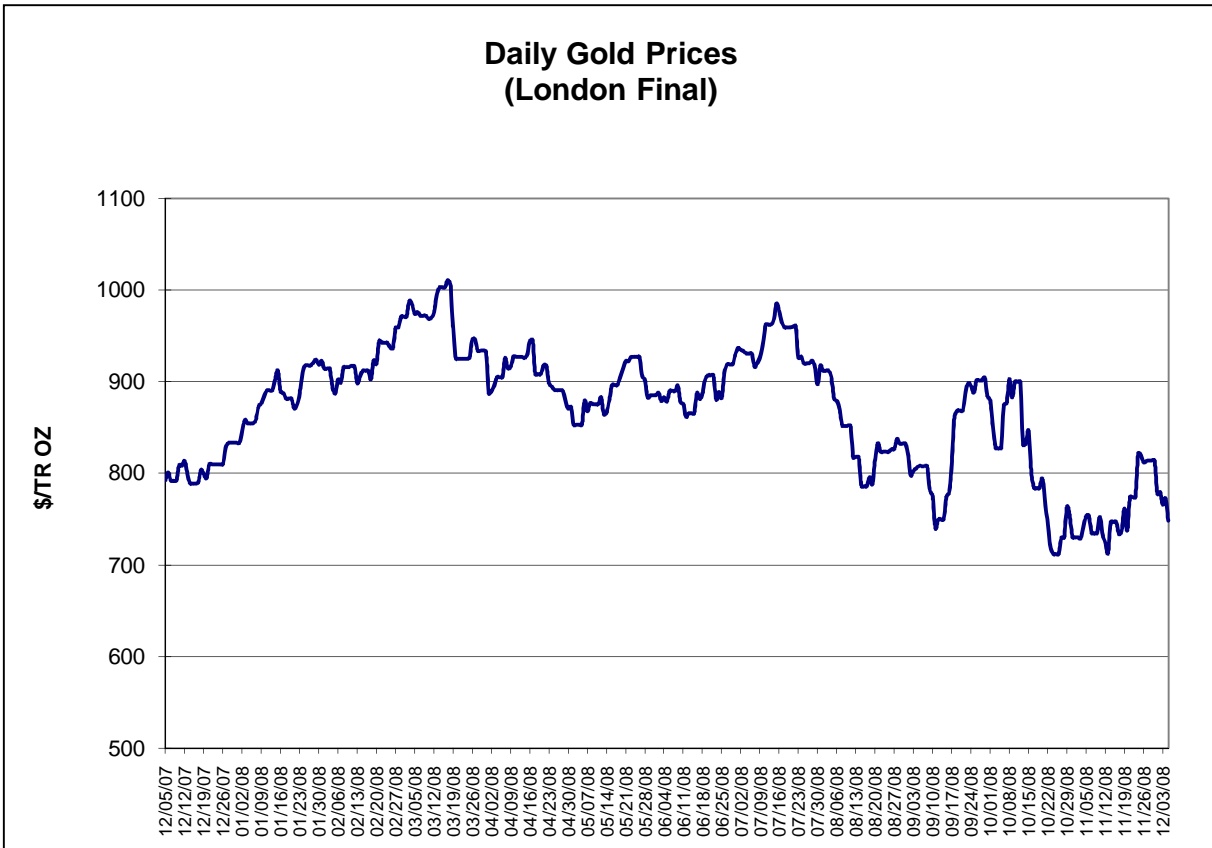
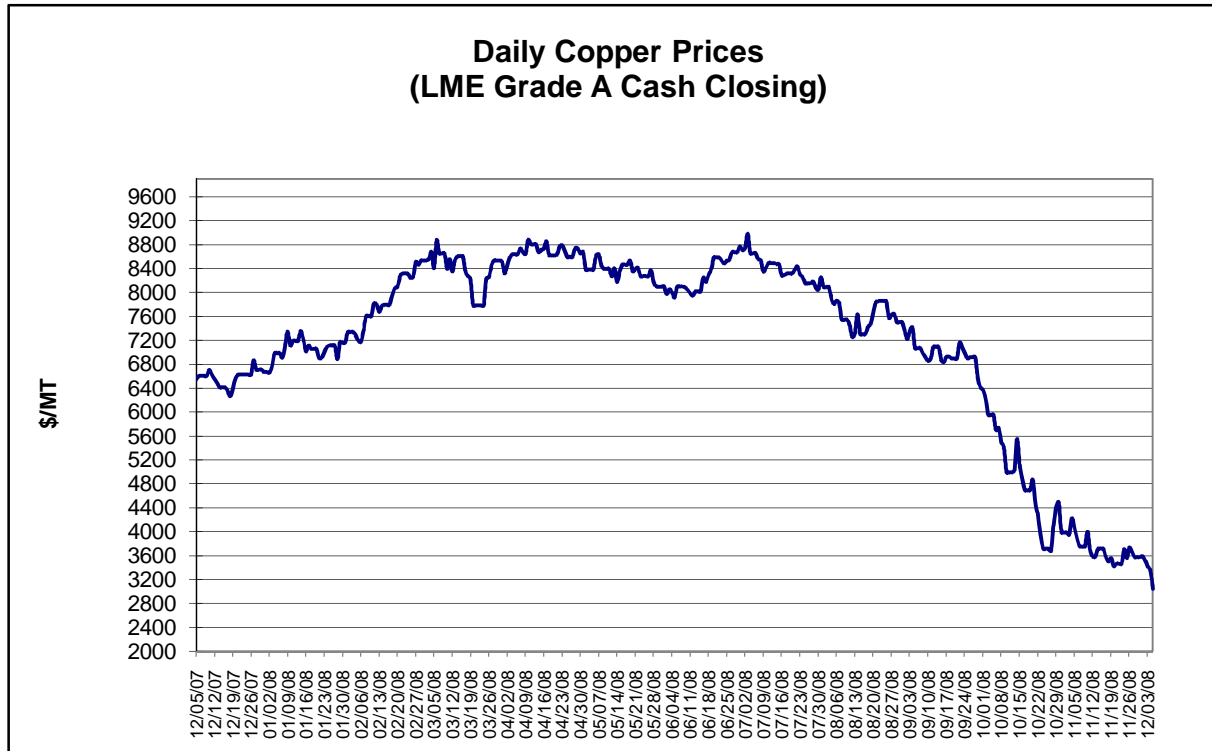
** Based on tonnage capability to produce raw steel for a sustained full order book.

Average Weekly Raw Steel Production



Monthly Raw Steel Production

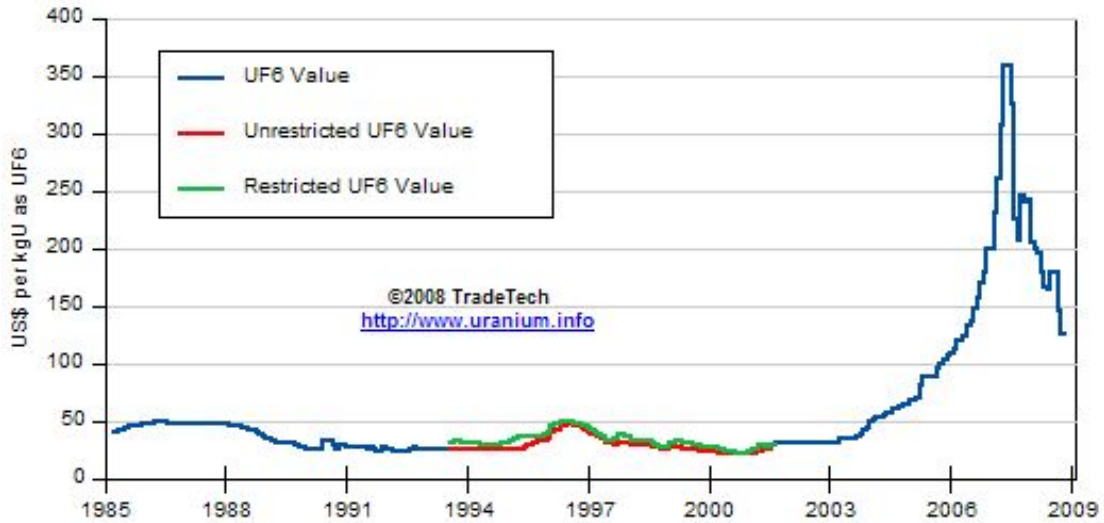




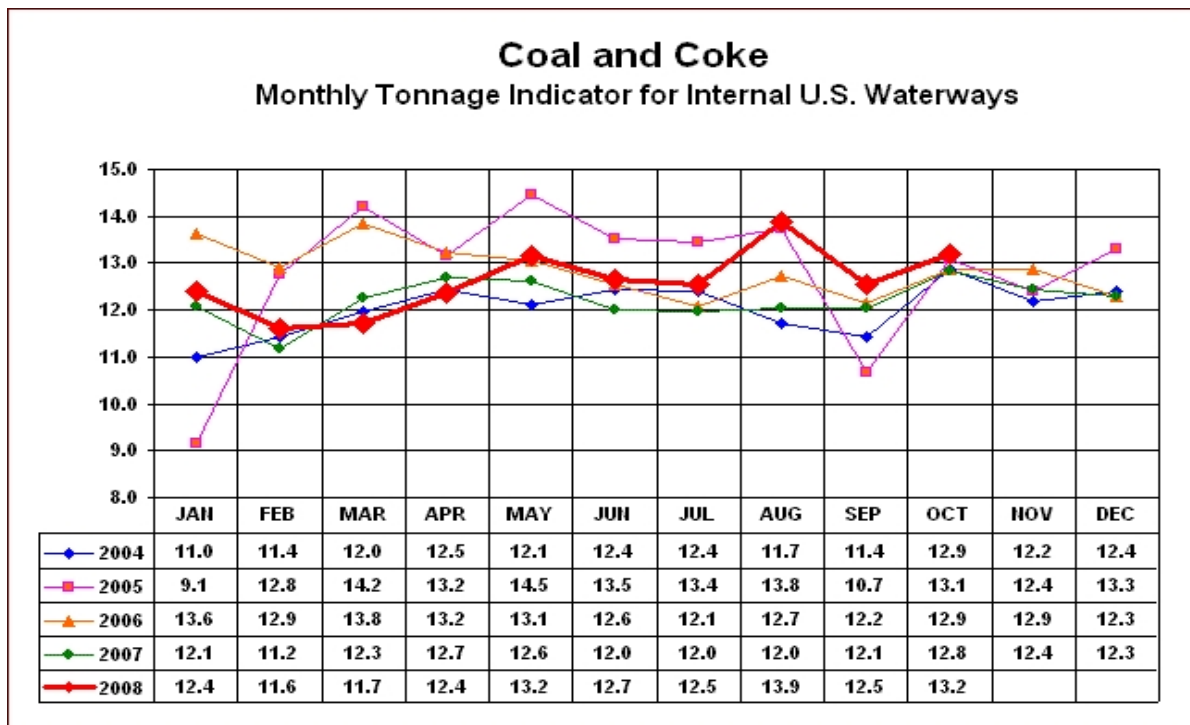
Data reflect closings on weekends and holidays.

Source: Platts Metals Week

Trade Tech's Uranium (UF6) Monthly Spot Prices (US\$/kg as UF6)



Source: Trade Tech, Uranium Info Website – <http://www.uranium.info>

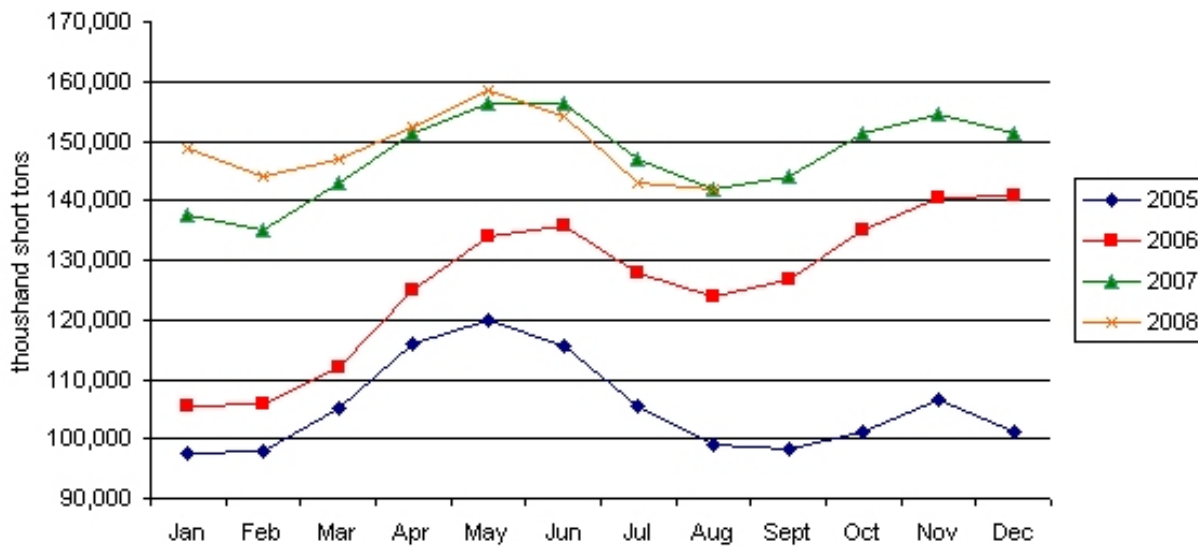


Source: U.S. Army Corps of Engineers, Waterborne Commerce Statistics Center

Average Weekly Coal Commodity Spot Prices (Dollars per Short Ton)					
Week Ended	Central Appalachia 12,500 Btu, 1.2 SO2	Northern Appalachia 13,000 Btu, <3.0 SO2	Illinois Basin 11,800 Btu, 5.0 SO2	Powder River Basin 8,800 Btu, 0.8 SO2	Uinta Basin 11,700 Btu, 0.8 SO2
24-Oct-08	\$119.25	\$123.00	\$84.00	\$14.50	\$61.00
31-Oct-08	\$119.25	\$111.50	\$84.00	\$14.50	\$73.00
07-Nov-08	\$119.25	\$111.50	\$84.00	\$14.50	\$73.00
14-Nov-08	\$111.15	\$111.50	\$84.00	\$14.50	\$73.00
21-Nov-08	\$111.15	\$111.50	\$84.00	\$14.50	\$73.00
28-Nov-08	\$111.15	\$101.50	\$83.00	\$14.50	\$73.00
05-Dec-08	\$89.80	\$101.50	\$78.00	\$12.50	\$73.00

Source: Energy Information Administration (from Platts *Coal Outlook*, "Weekly Price Survey")

EIA Electric Power Sector Coal Stocks



Source: Energy Information Administration

USGS Production of Selected Mineral Commodities	2008 Year to Date - 3rd Quarter	2007 Year to Date - 3rd Quarter	Percent Change
Aluminum, secondary (000 Mt.)	729.0	708.0	3%
Cement (Mil. Mt.)	65.6	70.0	-6%
Gypsum (Mil. Mt.)	14.1	16.4	-14%
Iron Ore (Mil. Mt.)	40.9	38.6	6%
Phosphate rock (Mil. Mt.)	23.0	22.1	4%
Sand & gravel, construction (Mil. Mt.)	754.0	940.0	-20%
Soda ash (Mil. Mt.)	8.4	8.3	1%
Stone, crushed (Mil. Mt.)	1,020.0	1,220.0	-16%
Zinc (000 Mt.)	628.0	574.0	9%

Source: U.S. Geological Survey, Mineral Industry Surveys, *U.S. Production of Selected Mineral Commodities in the Third Quarter 2008, November 2008*