
National Mining Association

Weekly Statistical Summary

December 14, 2007 Edition
(Data for Week Ending December 8, 2007)

Prepared by
National Mining Association



Suite 500 East, 101 Constitution Avenue, NW
Washington, DC, 20001
Phone (202) 463-2600
Visit us at <http://www.nma.org>

NMA Weekly Statistical Summary

Vol. 45, No. 49
Dated 12/14/07

PRODUCTION, CONSUMPTION & TRADE						
	Week Ended			Cumulative Jan 1 to		
	12/08/07	12/09/06	% Chng	12/08/07	12/09/06	% Chng
EIA Coal Production (000 Tons):						
Week Ended/Year to Date	22,731	22,294	2.0%	1,080,948	1,092,762	-1.1%
52 Weeks Ended	1,149,199	1,158,282	-0.8%			
Month Ended -- November						
	November 07/06		% Chng	Jan - Nov 07/06		% Chng
	98,244	96,526	1.8%	1,056,389	1,066,687	-1.0%
MONTH ENDED AND CUMULATIVE NUMBERS ARE PRELIMINARY AND SUBJECT TO CHANGE						
DOC Bituminous Coal Trade (000 Tons)						
Exports:						
	September 07/06		% Chng	Jan - Sep 07/06		% Chng
Metallurgical	2,731	2,488	9.8%	23,856	20,499	16.4%
Steam	2,139	2,595	-17.6%	17,836	16,054	11.1%
Imports:						
	3,470	3,370	3.0%	27,750	27,313	1.6%
EEI Electric Output (Mil. Kwh)						
	Week Ended			Cumulative Jan 1 to		
	12/08/07	12/09/06	% Chng	12/08/07	12/09/06	% Chng
	79,689	81,668	-2.4%	3,865,369	3,766,228	2.6%
AISI Raw Steel Output (000 Tons)						
	2,064	1,733	19.1%	100,294	103,054	-2.7%
EIA U.S. PETROLEUM DATA						
4-Week Averages 000 Barrels per Day						
PETROLEUM SUPPLY:						
	Week Ending			Cumulative Daily Averages		
	12/07/07	12/07/06	% Chng	2007	2006	% Chng
Domestic Crude	5,077	5,118	-0.8	5,119	5,097	0.4
Net Imports (Incl. SPR)	9,878	9,792	0.9	9,996	10,126	-1.3
SPR Stocks W/D or Added	-29	0	--	-20	-12	--
Other Stocks W/D or added	363	280	--	40	-19	--
Natural Gas Liquids Prod.	2,400	2,471	-2.9	2,387	2,228	7.1



NMA
THE AMERICAN RESOURCE

National Mining Association Web Site: [http:// www.nma.org](http://www.nma.org)

EIA Estimated Weekly U.S. Coal Production Overview (Thousand Short Tons)

Coal-Producing Region and State	Week Ended			Year To Date		Percent Change	52 Weeks Ended		Percent Change
	12/8/2007	12/1/2007	12/9/2006	12/8/2007	12/8/2006		12/8/2007	12/9/2006	
Alabama	366	380	337	18,379	18,046	1.8	19,353	19,087	1.4
Alaska	28	29	29	1,417	1,339	5.8	1,503	1,410	6.6
Arizona	131	136	154	7,331	7,767	-5.6	7,780	8,377	-7.1
Arkansas	1	2	1	58	20	193.7	61	20	207.8
Colorado	705	732	686	34,756	34,142	1.8	36,864	36,073	2.2
Illinois	654	680	622	32,874	30,816	6.7	34,761	32,564	6.7
Indiana	689	716	668	33,539	33,085	1.4	35,551	35,161	1.1
Kansas	10	10	10	429	390	10.1	465	399	16.8
Kentucky Total	2,271	2,360	2,146	109,870	114,623	-4.1	116,325	121,198	-4.0
Eastern	1,670	1,735	1,633	82,508	88,925	-7.2	87,414	94,098	-7.1
Western	601	624	513	27,361	25,698	6.5	28,911	27,100	6.7
Louisiana	94	97	94	2,940	3,786	-22.4	3,258	4,073	-20.0
Maryland	72	75	51	3,216	4,901	-34.4	3,368	5,190	-35.1
Mississippi	82	59	67	3,434	3,564	-3.7	3,660	3,751	-2.4
Missouri	4	5	6	240	378	-36.6	256	416	-38.6
Montana	831	863	801	38,281	39,244	-2.5	40,764	41,544	-1.9
New Mexico	482	501	511	24,080	24,374	-1.2	25,608	26,081	-1.8
North Dakota	571	593	596	26,688	28,627	-6.8	28,472	30,344	-6.2
Ohio	435	452	420	21,001	21,459	-2.1	22,250	22,873	-2.7
Oklahoma	37	39	34	1,720	1,899	-9.4	1,820	2,007	-9.3
Pennsylvania Total	1,232	1,280	1,208	61,646	62,522	-1.4	65,282	66,366	-1.6
Anthracite	34	35	28	1,458	1,448	0.7	1,547	1,531	1.1
Bituminous	1,198	1,245	1,180	60,188	61,074	-1.5	63,735	64,835	-1.7
Tennessee	49	51	50	2,545	2,658	-4.3	2,691	2,842	-5.3
Texas	854	887	847	40,192	42,818	-6.1	42,813	45,746	-6.4
Utah	461	479	511	22,857	24,470	-6.6	24,392	25,952	-6.0
Virginia	544	566	534	26,990	28,266	-4.5	28,576	29,713	-3.8
Washington	0	0	0	0	2,580	-100.0	s	2,937	-100.0
West Virginia Total	2,914	3,028	2,738	144,766	144,043	0.5	153,006	152,428	0.4
Northern	883	918	729	43,090	40,191	7.2	45,276	42,523	6.5
Southern	2,031	2,110	2,009	101,676	103,852	-2.1	107,729	109,905	-2.0
Wyoming	9,216	9,573	9,174	421,700	416,945	1.1	450,320	441,730	1.9
Appalachian Total	7,282	7,567	6,970	361,052	370,821	-2.6	381,940	392,596	-2.7
Interior Total	3,026	3,119	2,861	142,787	142,453	0.2	151,556	151,237	0.2
Western Total	12,424	12,906	12,463	577,110	579,488	-0.4	615,703	614,449	0.2
East of Miss. River	9,307	9,646	8,840	458,260	463,984	-1.2	484,823	491,172	-1.3
West of Miss. River	13,424	13,946	13,454	622,688	628,778	-1.0	664,376	667,109	-0.4
Bituminous and Lignite	22,698	23,557	22,266	1,079,491	1,091,314	-1.1	1,147,652	1,156,751	-0.8
Anthracite	34	35	28	1,458	1,448	0.7	1,547	1,531	1.1
U.S. Total	22,731	23,592	22,294	1,080,948	1,092,762	-1.1	1,149,199	1,158,282	-0.8
Railroad Cars Loaded	146,175	154,454	140,069	6,999,840	7,030,450	-0.4	7,424,747	7,433,017	-0.1

Source: Energy Information Administration



Volume 75 No. 49

OUTPUT FOR WEEK ENDED - Dec 08, 2007

Dec 12, 2007

The net available amount of electric energy distributed by the Total Electric Utility Industry+ for the week ended Saturday, Dec 08, 2007 was **79,689** gigawatthours (GWh), according to the Edison Electric Institute. This is equivalent to **184** on the weekly electric output index.

WEEKLY ELECTRIC OUTPUT BY GEOGRAPHIC DIVISION
(48 CONTIGUOUS STATES)

	Week Ended December 08		52 Weeks Ended December 08	
	GWh Output	% Increase Over Corresponding Week of 2006	GWh Output	% Increase Over Corresponding Period of 2006
New England	2,762	4.3	134,002	1.3
Mid-Atlantic	9,387	4.4	456,949	2.5
Central Industrial	14,766	-0.1	720,148	3.2
West Central	6,971	-1.3	351,120	1.9
Southeast	21,604	-4.9	1,103,208	2.5
South Central	10,054	-11.4	596,217	-0.4
Rocky Mountain	5,421	6.5	275,939	6.2
Pacific Northwest	3,460	-6.6	158,043	4.1
Pacific Southwest	5,264	-1.2	292,383	0.2
Total United States	79,689	-2.4	4,088,009	2.2

WEEKLY ELECTRIC OUTPUT IN PREVIOUS WEEKS--GWh

Week Ended	2007	Week Ended	2006	% Inc. (07/06)	52 Weeks Ended	2007	% Inc. (07/06)
Nov 17	73,355	Nov 18	72,042	1.8	Nov 17	4,087,356	2.2
Nov 24	71,597	Nov 25	71,398	0.3	Nov 24	4,087,555	2.2
Dec 01	76,233	Dec 02	73,799	3.3	Dec 01	4,089,988	2.3
Dec 08	79,689	Dec 09	81,668	-2.4	Dec 08	4,088,009	2.2
Dec 08	3,865,369	Dec 09	3,766,228	2.6	YEAR TO DATE, FIRST 49 WEEKS		

WEEKLY ELECTRIC OUTPUT INDEX--TOTAL U.S.*
SEASONALLY ADJUSTED 1982 = 100

Week Ended	2007	Week Ended	2006	Week Ended	2005
Nov 17	184	Nov 18	181	Nov 19	179
Nov 24	179	Nov 25	179	Nov 26	181
Dec 01	193	Dec 02	188	Dec 03	176
Dec 08	184	Dec 09	192	Dec 10	186

* Excludes Alaska and Hawaii.

+ Includes investor-owned companies, cooperatives and government-owned utilities.

Copyright © 2007 Edison Electric Institute. All rights reserved.

WEEKLY ELECTRIC OUTPUT BY GEOGRAPHIC DIVISION (48 CONTIGUOUS STATES)

	Week Ended			NMA CUMULATIVE JANUARY 1 to			52 Weeks Ended		
	8-Dec 2007 GWh Output	9-Dec 2006 GWh Output	% Increase Over Corresponding Week of 2006	8-Dec 2007 GWh Output	9-Dec 2006 GWh Output	% Increase Over Corresponding Week of 2006	8-Dec 2007 GWh Output	9-Dec 2006 GWh Output	% Increase Over Corresponding Week of 2006
New England	2,762	2,648	4.3%	126,433	124,255	1.8%	134,002	132,308	1.3%
Mid-Atlantic	9,387	8,993	4.4%	432,143	418,945	3.2%	456,949	445,643	2.5%
Central Industrial	14,766	14,778	-0.1%	680,163	654,901	3.9%	720,148	697,703	3.2%
West Central	6,971	7,061	-1.3%	331,702	324,732	2.1%	351,120	344,666	1.9%
Southeast	21,604	22,710	-4.9%	1,044,906	1,013,791	3.1%	1,103,208	1,076,318	2.5%
South Central	10,054	11,353	-11.4%	565,516	567,668	-0.4%	596,217	598,486	-0.4%
Rocky Mountain	5,421	5,090	6.5%	260,701	245,385	6.2%	275,939	259,712	6.2%
Pacific Northwest	3,460	3,705	-6.6%	147,487	140,817	4.7%	158,043	151,860	4.1%
Pacific Southwest	<u>5,264</u>	<u>5,330</u>	-1.2%	<u>276,318</u>	<u>275,736</u>	0.2%	<u>292,383</u>	<u>291,662</u>	0.2%
Total United States *	79,689	81,668	-2.4%	3,865,369	3,766,230	2.6%	4,088,009	3,998,358	2.2%

Notes: EEI output data are an estimate of electricity load made available for distribution derived as weekly net generation + purchases from non-utilities + net imports - exports - sales for resale. It is not meant to be a measure of electricity generation for the U.S. EEI survey data represent the majority of national distribution (large utilities, large government power projects, some independent and large municipal power projects). The remaining segment of the industry (smaller producers) is estimated. Non-utility generation is captured via direct sales to utilities.

* Excludes Alaska and Hawaii

** Less than one-tenth of one percent

SOURCE: Edison Electric Institute (EEI), *Weekly Electric Output Report*.

AMERICAN IRON AND STEEL INSTITUTE
 1140 Connecticut Avenue, Suite 705
 Washington, D.C. 20036

December 10, 2007

ESTIMATED WEEKLY RAW STEEL* PRODUCTION

<u>Period</u>	<u>Thousand Net Tons</u>	<u>Percent Change from Previous Period</u>	<u>Percent Capability Utilization**</u>	<u>Production by District</u>		
				<u>Week Ending</u>		
<u>Week Ending</u>				<u>Dec 8</u>	<u>Dec 1</u>	
Dec 8, 2007	2,064	1.9	86.5	North East Coast	140	123
Dec 8, 2006	1,733	19.0	75.0	Pgh/Youngstown	189	185
Dec 1, 2007	2,024	-0.9	84.9	Lake Erie	95	100
				Detroit	129	133
				Indiana/Chicago	523	511
				Midwest	261	258
				Southern	651	624
				Western	76	90
				Total	2064	2024
<u>Year-to-Date+</u>						
Dec 8, 2007	100,294	-2.6	86.0			
Dec 8, 2006	103,054	-	87.5			

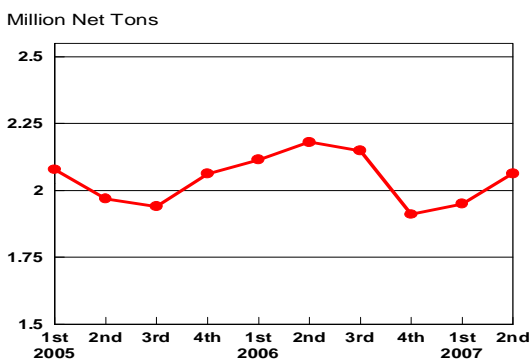
*Raw steel production tonnage included in this report is estimated based on a sampling of steel producers. Therefore, this report should be used primarily to assess production trends. The AISI production report "AIS 7," produced monthly and available by subscription, provides a more accurate summary of steel production based on data supplied by companies representing approximately 75% of U.S. production capacity.

+Includes revisions for previous months

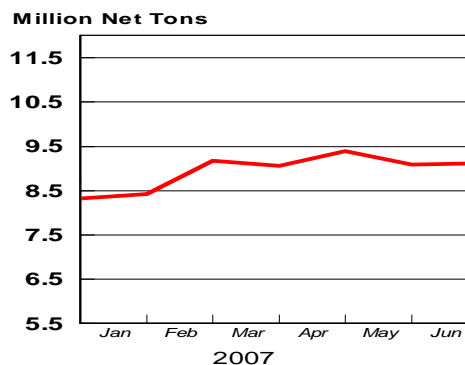
NOTE: Capability for the Fourth Quarter 2007 is approximately 31.3 million net tons vs 30.7 million net tons for the same period last year, and 30.1 million tons for the third quarter of 2007.

Capability -	2003 approx.	2.3 million tons/week
	2004	2.2
	2005	2.3
	2006	2.4
	2007	2.4

Average Weekly Raw Steel Production

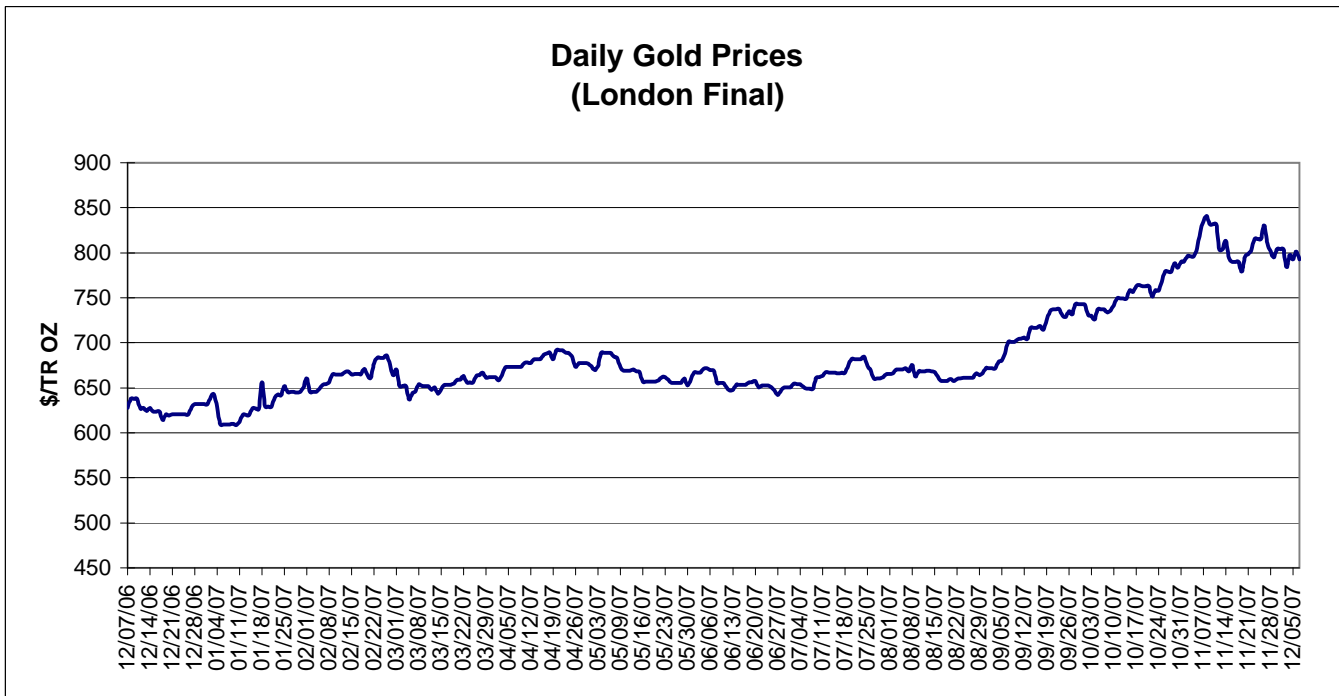
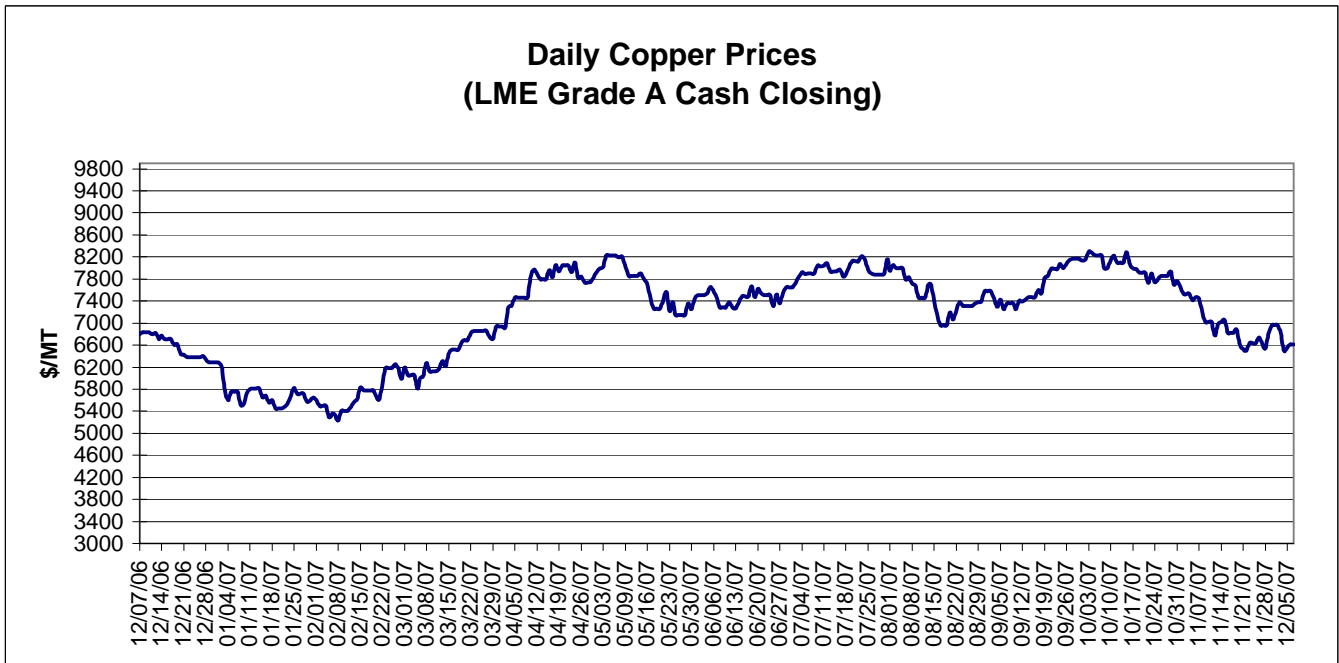


MONTHLY RAW STEEL PRODUCTION



*Steel in the first solid state after melting suitable for further processing or sale, including ingots, steel for castings and strand or pressure cast blooms, slabs, or other product forms.

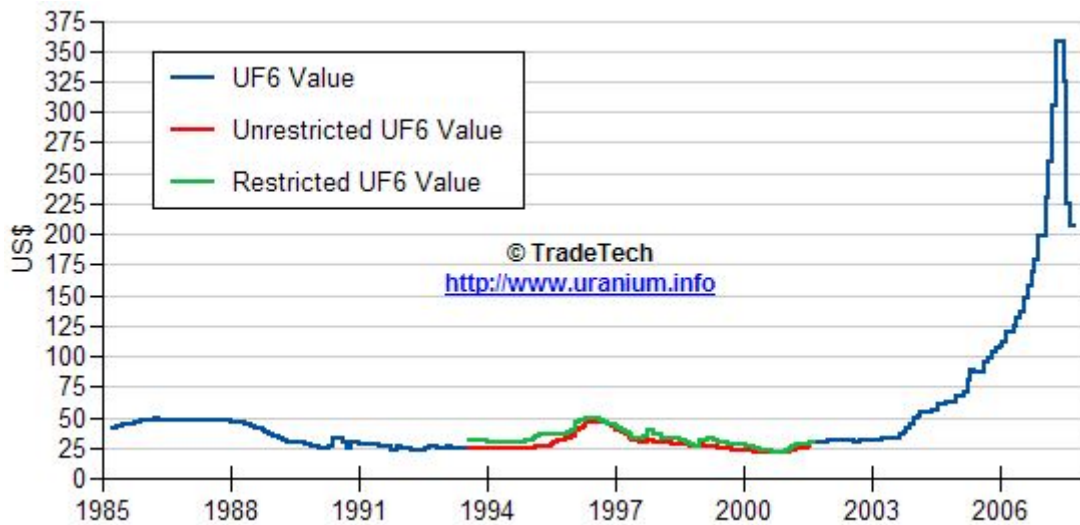
** Based on tonnage capability to produce raw steel for a sustained full order book.



Data reflect closings on weekends and holidays.

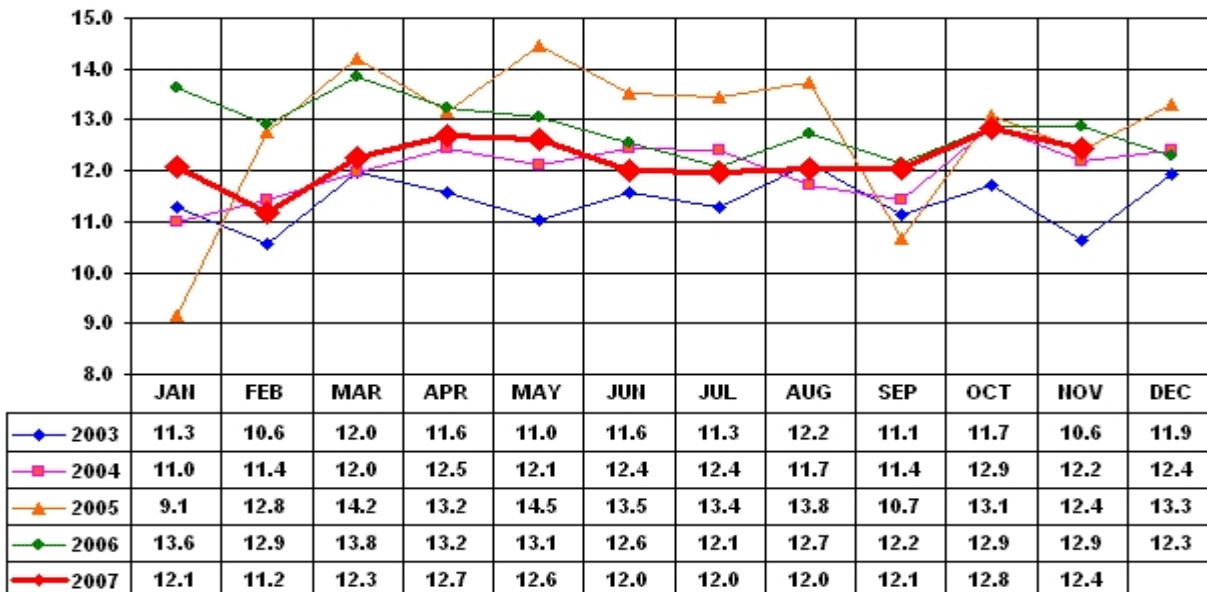
Source: Platts Metals Week

Trade Tech's Uranium (UF6) Monthly Spot Prices (US\$/kg as UF6)



Source: Trade Tech, Uranium Info Website – <http://www.uranium.info>

Coal and Coke Monthly Tonnage Indicator for Internal U.S. Waterways



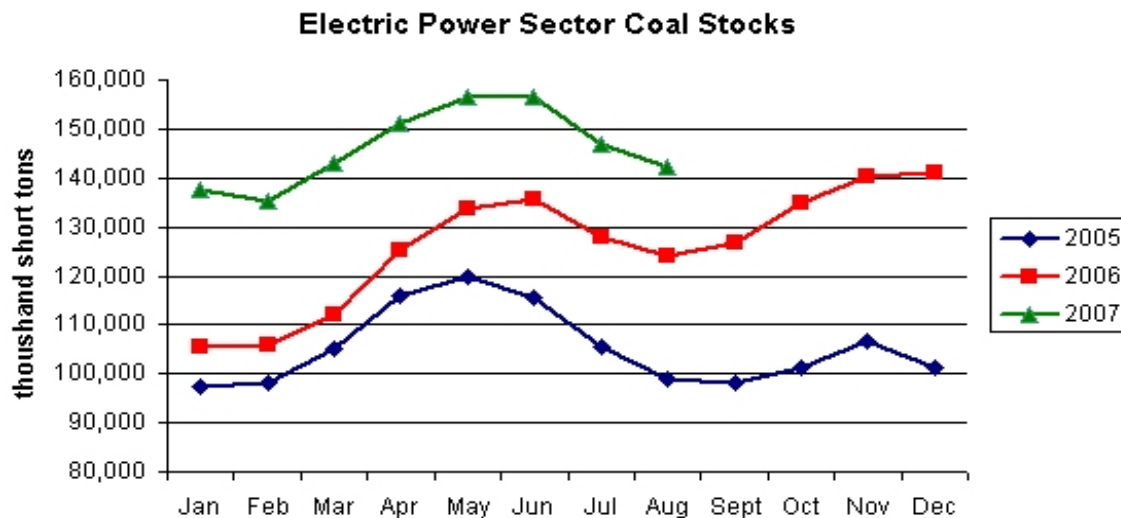
Source: U.S. Army Corps of engineers, Waterborne Commerce Statistics Center

EIA Weekly Spot Coal Prices

The following average spot coal prices appear in the graphic below, for the previous and most recent weeks:

Week Ended	Central Appalachia 12,500 Btu, 1.2 SO2	Northern Appalachia 13,000 Btu, <3.0 SO2	Illinois Basin 11,800 Btu, 5.0 SO2	Powder River Basin 8,800 Btu, 0.8 SO2	Uinta Basin 11,700 Btu, 0.8 SO2
02-Nov-07	\$49.90	\$46.50	\$33.50	\$11.05	\$24.00
09-Nov-07	\$49.90	\$46.50	\$33.50	\$11.05	\$24.00
16-Nov-07	\$52.95	\$55.25	\$33.50	\$11.05	\$24.00
23-Nov-07	\$52.95	\$55.25	\$33.50	\$11.05	\$24.00
30-Nov-07	\$56.80	\$55.25	\$33.50	\$11.15	\$24.00
07-Dec-07	\$57.70	\$55.25	\$33.50	\$11.50	\$24.00

Source: Energy Information Administration (from Platts *Coal Outlook*, "Weekly Price Survey")



Source: Energy Information Administration