
National Mining Association

Weekly Statistical Summary

December 19, 2008 Edition
(Data for Week Ending December 13, 2008)

Prepared by
National Mining Association



Suite 500 East, 101 Constitution Avenue, NW
Washington, DC, 20001
Phone (202) 463-2600
Visit us at <http://www.nma.org>

NMA Weekly Statistical Summary

Vol. 46, No. 50
Dated 12/19/08

PRODUCTION, CONSUMPTION & TRADE						
	Week Ended			* Cumulative Jan 1 to		
	12/13/08	12/15/07	% Chng	12/13/08	12/13/07	% Chng
EIA Coal Production (000 Tons):						
Week Ended/Year to Date	23,305	21,880	6.5%	1,115,808	1,094,251	2.0%
52 Weeks Ended	1,162,825	1,144,955	1.6%			
* Due to leap year, 2008 cumulative reflects one extra day of tonnage.						
	November 08/07		% Chng	Jan - Nov 08/07		% Chng
Month Ended -- November	94,991	96,910	-2.0%	1,070,917	1,053,497	1.7%
MONTH ENDED AND CUMULATIVE NUMBERS ARE PRELIMINARY AND SUBJECT TO CHANGE						
DOC Bituminous Coal Trade (000 Tons)						
	Oct 08/07		% Chng	Jan - Oct 08/07		% Chng
Exports:						
Metallurgical	4,494	2,575	74.5%	36,727	26,432	38.9%
Steam	3,827	2,319	65.0%	30,367	20,155	50.7%
Imports:	2,921	2,896	0.9%	28,028	30,646	-8.5%
	Week Ended			* Cumulative Jan 1 to		
	12/13/08	12/15/07	% Chng	12/13/08	12/15/07	% Chng
EEl Electric Output (Mil. Kwh)	79,537	79,780	-0.3%	3,905,297	3,945,150	-1.0%
AISI Raw Steel Output (000 Tons)	1,168	2,102	-44.4%	98,297	103,104	-4.7%
EIA U.S. PETROLEUM DATA						
4-Week Averages						
000 Barrels per Day						
	Week Ending			Cumulative Daily Averages		
	12/12/08	12/12/07	% Chng	2008	2007	% Chng
PETROLEUM SUPPLY:						
Domestic Crude	5,061	5,032	0.6	4,950	5,065	-2.3
Net Imports (Incl. SPR)	9,996	9,906	0.9	9,767	10,007	-2.4
SPR Stocks W/D or Added	0	-46	--	-13	-21	--
Other Stocks W/D or added	-277	326	--	-110	51	--
Natural Gas Liquids Prod.	2,390	2,588	-7.7	2,270	2,410	-5.8



NMA

THE AMERICAN RESOURCE National Mining Association Web Site: [http:// www.nma.org](http://www.nma.org)

EIA Estimated Weekly U.S. Coal Production Overview (Thousand Short Tons)

Coal-Producing Region and State	Week Ended			Year to Date			52 Weeks Ended		
	12/13/2008	12/6/2008	12/15/2007	12/13/2008	12/13/2007	Percent Change	12/13/2008	12/15/2007	Percent Change
Alabama	406	397	393	19,860	18,666	6.4	20,636	19,367	6.6
Alaska	27	26	30	1,306	1,272	2.7	1,352	1,334	1.3
Arizona	158	154	143	7,667	7,648	0.2	7,973	7,964	0.1
Arkansas	1	1	2	56	78	-27.6	61	81	-24.5
Colorado	700	684	711	32,148	34,745	-7.5	33,600	36,323	-7.5
Illinois	608	594	534	30,557	31,692	-3.6	31,601	33,050	-4.4
Indiana	733	717	676	34,398	33,466	2.8	35,787	34,928	2.5
Kansas	6	6	8	274	404	-32.3	288	431	-33.1
Kentucky Total	2,251	2,201	2,256	113,768	110,538	2.9	118,278	115,233	2.6
Eastern	1,679	1,641	1,692	85,647	83,524	2.5	89,032	87,077	2.2
Western	572	559	564	28,121	27,014	4.1	29,246	28,156	3.9
Louisiana	88	90	75	3,729	2,912	28.0	3,923	3,151	24.5
Maryland	57	56	51	2,431	2,233	8.9	2,489	2,343	6.3
Mississippi	39	52	34	2,647	3,389	-21.9	2,794	3,558	-21.5
Missouri	6	6	5	239	226	5.6	248	237	4.7
Montana	899	879	952	42,258	41,107	2.8	44,282	43,011	3.0
New Mexico	622	608	500	26,158	23,387	11.8	27,116	24,487	10.7
North Dakota	596	583	594	28,276	28,292	-0.1	29,471	29,572	-0.3
Ohio	488	477	467	24,397	21,490	13.5	25,379	22,403	13.3
Oklahoma	36	35	32	1,392	1,580	-11.9	1,453	1,651	-12.0
Pennsylvania Total	1,250	1,222	1,256	61,647	62,423	-1.2	64,150	65,060	-1.4
Anthracite	21	21	33	1,475	1,500	-1.6	1,537	1,567	-1.9
Bituminous	1,229	1,201	1,222	60,171	60,923	-1.2	62,613	63,493	-1.4
Tennessee	53	52	55	2,325	2,537	-8.4	2,432	2,642	-8.0
Texas	763	746	872	36,773	39,966	-8.0	38,513	41,944	-8.2
Utah	473	463	530	22,712	23,182	-2.0	23,723	24,298	-2.4
Virginia	526	514	432	23,610	24,591	-4.0	24,385	25,715	-5.2
Washington	--	--	--	--	--	--	0	s	-100.0
West Virginia Total	3,168	3,097	2,953	152,097	146,861	3.6	158,109	152,888	3.4
Northern	823	805	779	38,805	40,501	-4.2	40,354	42,094	-4.1
Southern	2,345	2,292	2,174	113,292	106,360	6.5	117,755	110,794	6.3
Wyoming	9,351	9,750	8,318	445,082	431,566	3.1	464,780	453,284	2.5
Appalachian Total	7,626	7,456	7,299	372,015	362,324	2.7	386,613	377,495	2.4
Interior Total	2,852	2,806	2,801	138,185	140,728	-1.8	143,914	147,186	-2.2
Western Total	12,826	13,147	11,780	605,608	591,199	2.4	632,297	620,273	1.9
East of Miss. River	9,579	9,378	9,107	467,738	457,886	2.2	486,040	477,187	1.9
West of Miss. River	13,726	14,031	12,773	648,070	636,366	1.8	676,784	667,767	1.4
Bituminous and Lignite	23,283	23,389	21,847	1,114,333	1,092,751	2.0	1,161,288	1,143,388	1.6
Anthracite	21	21	33	1,475	1,500	-1.6	1,537	1,567	-1.9
U.S. Total	23,305	23,409	21,880	1,115,808	1,094,251	2.0	1,162,825	1,144,955	1.6
Railroad Cars Loaded	153,378	154,595	141,883	7,400,692	7,141,723	3.6	7,663,001	7,418,088	3.3

Source: Energy Information Administration


WEEKLY ELECTRIC OUTPUT
Essential Energy Information from EEI's Statistics Department
Volume 76 No. 50
OUTPUT FOR WEEK ENDED - Dec 13, 2008
Dec 17, 2008

The net available amount of electric energy distributed by the Total Electric Utility Industry+ for the week ended Saturday, Dec 13, 2008 was **79,537** gigawatthours (GWh), according to the Edison Electric Institute. This is equivalent to **181** on the weekly electric output index.

WEEKLY ELECTRIC OUTPUT BY GEOGRAPHIC DIVISION

(48 CONTIGUOUS STATES)

	Week Ended December 13		52 Weeks Ended December 13	
	GWh Output	% Increase Over Corresponding Week of 2007	GWh Output	% Increase Over Corresponding Period of 2007
New England	2,578	-6.0	130,881	-2.5
Mid-Atlantic	9,060	-0.4	450,699	-1.5
Central Industrial	14,692	-0.2	707,364	-1.9
West Central	6,909	-2.6	344,879	-1.9
Southeast	21,677	6.1	1,091,821	-1.0
South Central	10,699	-1.0	601,616	0.8
Rocky Mountain	5,217	-7.6	275,861	-0.3
Pacific Northwest	3,555	-6.3	166,691	5.2
Pacific Southwest	5,150	-5.4	290,948	-0.5
Total United States	79,537	-0.3	4,060,760	-0.8

WEEKLY ELECTRIC OUTPUT IN PREVIOUS WEEKS--GWh

Week Ended	2008	Week Ended	2007	% Inc. (08/07)	52 Weeks Ended	2008	% Inc. (08/07)
Nov 22	76,406	Nov 24	71,597	6.7	Nov 22	4,066,792	-0.5
Nov 29	72,608	Dec 01	76,233	-4.8	Nov 29	4,063,168	-0.7
Dec 06	77,524	Dec 08	79,689	-2.7	Dec 06	4,061,003	-0.7
Dec 13	79,537	Dec 15	79,780	-0.3	Dec 13	4,060,760	-0.8
Dec 13	3,905,297	Dec 15	3,945,150	-1.0	YEAR TO DATE, FIRST 50 WEEKS		

WEEKLY ELECTRIC OUTPUT INDEX--TOTAL U.S.*

SEASONALLY ADJUSTED 1982 = 100

Week Ended	2008	Week Ended	2007	Week Ended	2006
Nov 22	191	Nov 24	179	Nov 25	179
Nov 29	182	Dec 01	193	Dec 02	188
Dec 06	179	Dec 08	184	Dec 09	192
Dec 13	181	Dec 15	180	Dec 16	173

* Excludes Alaska and Hawaii.

+ Includes investor-owned companies, cooperatives and government-owned utilities.

Copyright © 2008 Edison Electric Institute. All rights reserved.

WEEKLY ELECTRIC OUTPUT BY GEOGRAPHIC DIVISION (48 CONTIGUOUS STATES)

	Week Ended			NMA CUMULATIVE JANUARY WEEK ONE TO			52 Weeks Ended		
	13-Dec 2008 GWh Output	15-Dec 2007 GWh Output	% Increase Over Corresponding Week of 2007	13-Dec 2008 GWh Output	15-Dec 2007 GWh Output	% Increase Over Corresponding Week of 2007	13-Dec 2008 GWh Output	15-Dec 2007 GWh Output	% Increase Over Corresponding Week of 2007
New England	2,578	2,742	-6.0%	125,610	129,175	-2.8%	130,881	134,197	-2.5%
Mid-Atlantic	9,060	9,093	-0.4%	433,270	441,236	-1.8%	450,699	457,623	-1.5%
Central Industrial	14,692	14,722	-0.2%	680,111	694,885	-2.1%	707,364	720,891	-1.9%
West Central	6,909	7,095	-2.6%	331,462	338,797	-2.2%	344,879	351,570	-1.9%
Southeast	21,677	20,435	6.1%	1,050,505	1,065,341	-1.4%	1,091,821	1,103,020	-1.0%
South Central	10,699	10,812	-1.0%	579,807	576,328	0.6%	601,616	597,106	0.8%
Rocky Mountain	5,217	5,644	-7.6%	264,776	266,345	-0.6%	275,861	276,630	-0.3%
Pacific Northwest	3,555	3,793	-6.3%	158,890	151,280	5.0%	166,691	158,502	5.2%
Pacific Southwest	5,150	5,444	-5.4%	280,869	281,762	-0.3%	290,948	292,474	-0.5%
Total United States *	<u>79,537</u>	<u>79,780</u>	-0.3%	<u>3,905,300</u>	<u>3,945,149</u>	-1.0%	4,060,760	4,092,013	-0.8%

Notes: EEI output data are an estimate of electricity load made available for distribution derived as weekly net generation + purchases from non-utilities + net imports - exports - sales for resale. It is not meant to be a measure of electricity generation for the U.S. EEI survey data represent the majority of national distribution (large utilities, large government power projects, some independent and large municipal power projects). The remaining segment of the industry (smaller producers) is estimated. Non-utility generation is captured via direct sales to utilities.

* Excludes Alaska and Hawaii

** Less than one-tenth of one percent

SOURCE: Edison Electric Institute (EEI), *Weekly Electric Output Report*.

AMERICAN IRON AND STEEL INSTITUTE
 1140 Connecticut Avenue, Suite 705
 Washington, D.C. 20036

December 15, 2008

ESTIMATED WEEKLY RAW STEEL* PRODUCTION

Period	Thousand Net Tons	Percent Change from Previous Period	Percent Capability Utilization**	Production by District	
				Week Ending	
				Dec. 13	Dec. 6
Week Ending					
December 13, 2008	1,168	-1.2	49.0	North East Coast 91	87
December 13, 2007	2,102	-44.5	88.1	Pgh/Youngstown 110	126
December 6, 2008	1,182	-1.3	49.5	Lake Erie 19	20
				Detroit 57	62
				Indiana/Chicago 324	312
				Midwest 154	174
				Southern 376	347
				Western 37	54
				Total 1,168	1,182
Year-to-Date+					
December 13, 2008	98,297	-4.7	82.9		
December 13, 2007	103,104	-	87.0		

*Raw steel production tonnage included in this report is estimated based on a sampling of steel producers. Therefore, this report should be used primarily to assess production trends. The AISI production report "AIS 7," produced monthly and available by subscription, provides a more accurate summary of steel production based on data supplied by companies representing approximately 75% of U.S. production capacity.

+ Includes revisions for previous months

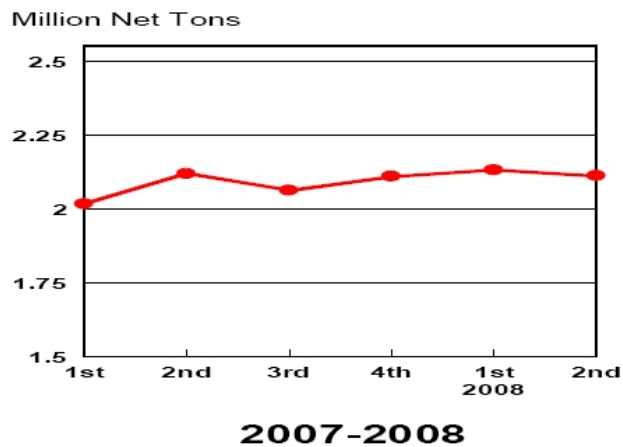
NOTE: Capability for the Third Quarter 2008 is approximately 31.4 million net tons vs 30.1 million net tons for the same period last year, and 31.0 million tons for the second quarter of 2008.

Capability -	2004 approx.	2.2 million tons/week
	2005	2.3
	2006	2.4
	2007	2.4
	2008	2.4

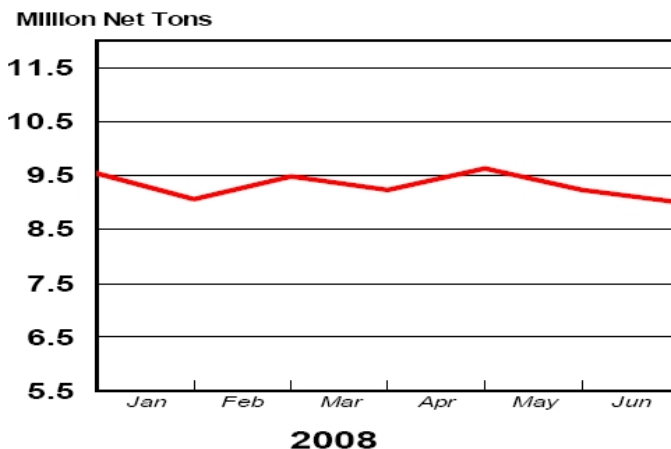
*Steel in the first solid state after melting suitable for further processing or sale, including ingots, steel for castings and strand or pressure cast blooms, slabs, or other product forms.

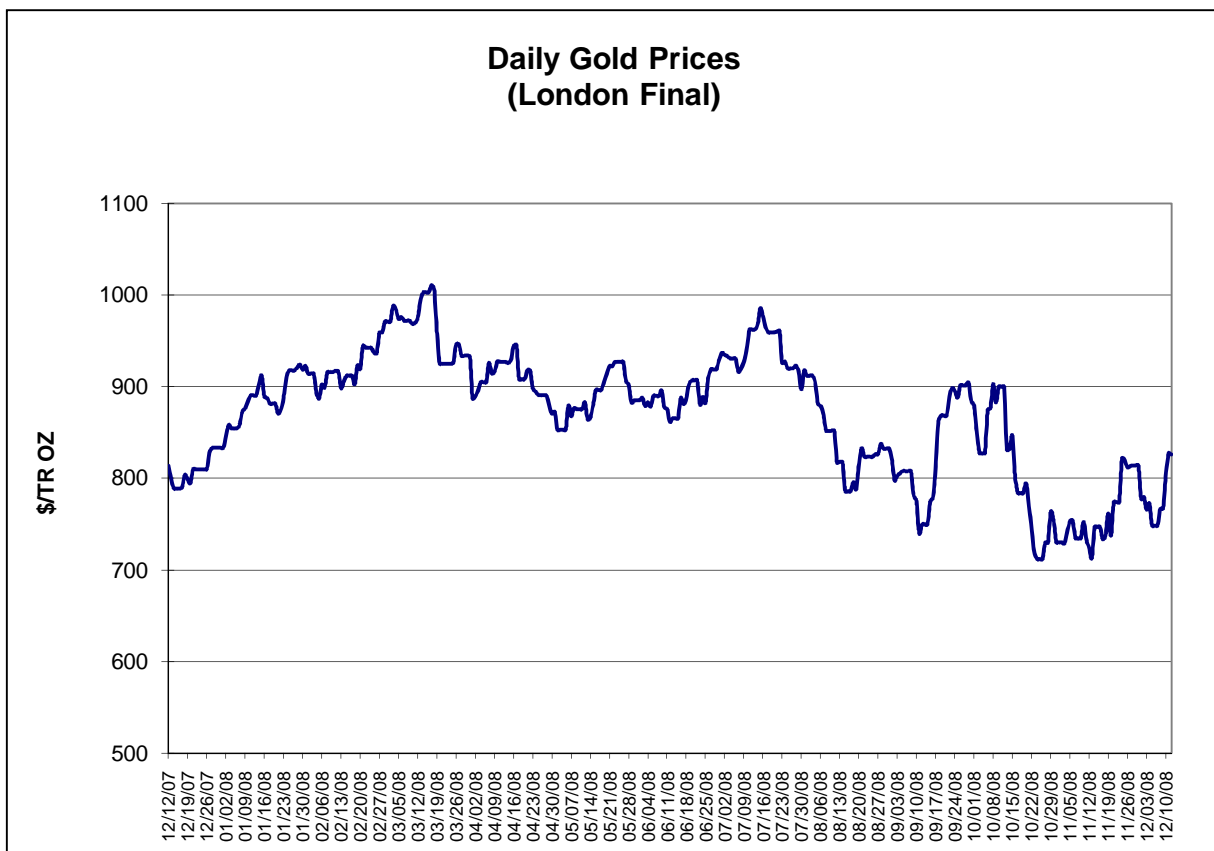
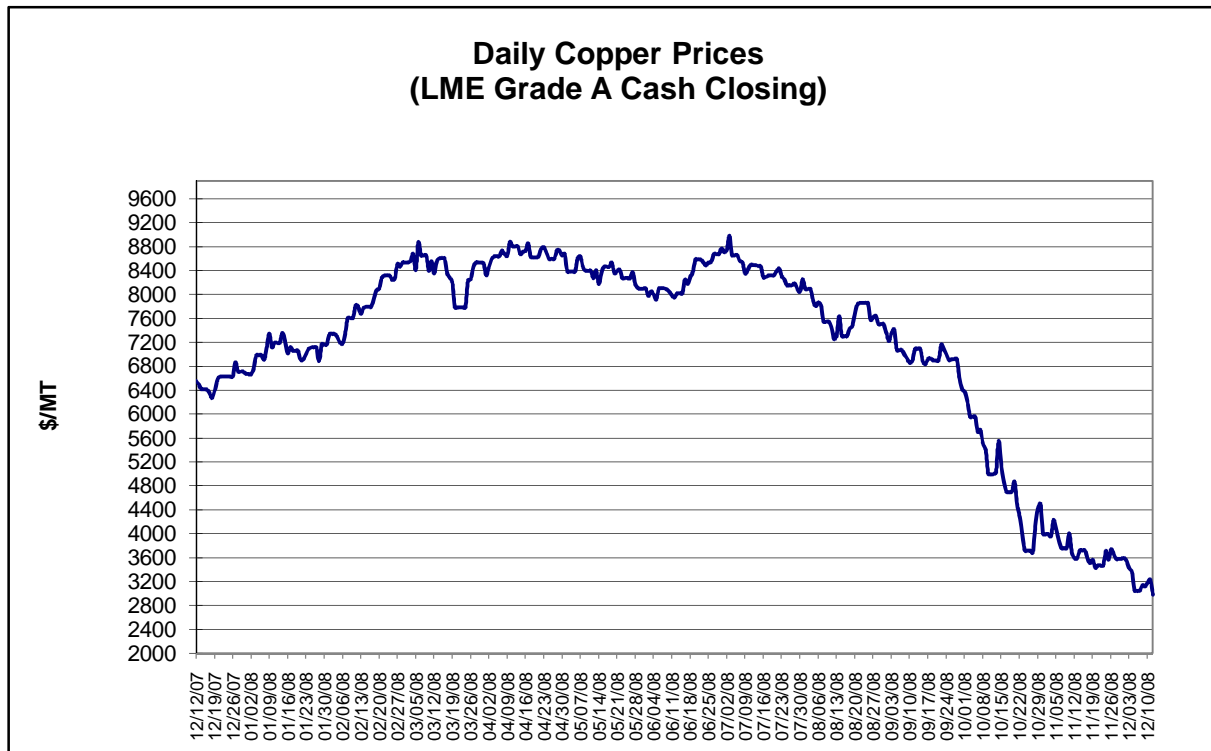
** Based on tonnage capability to produce raw steel for a sustained full order book.

Average Weekly Raw Steel Production



Monthly Raw Steel Production

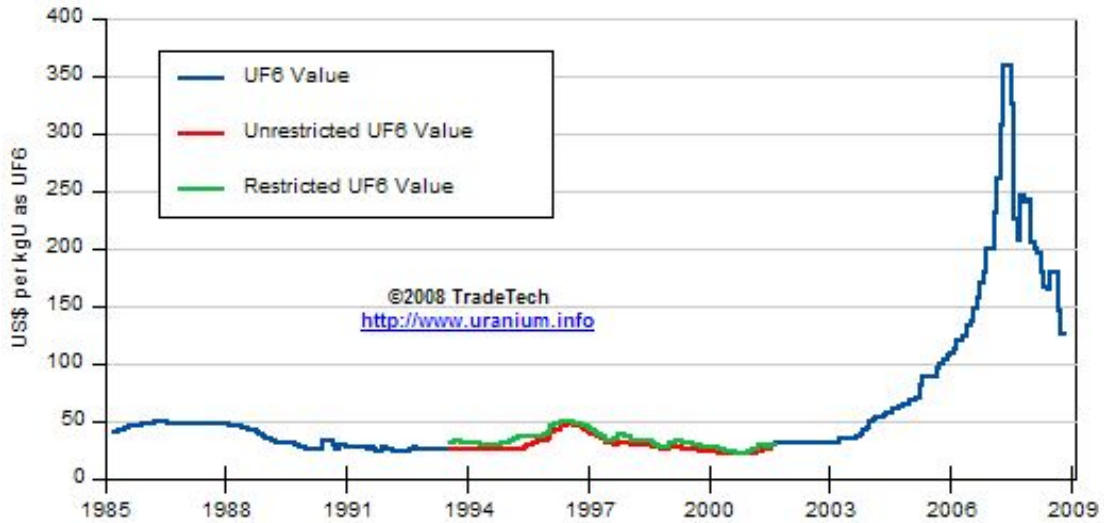




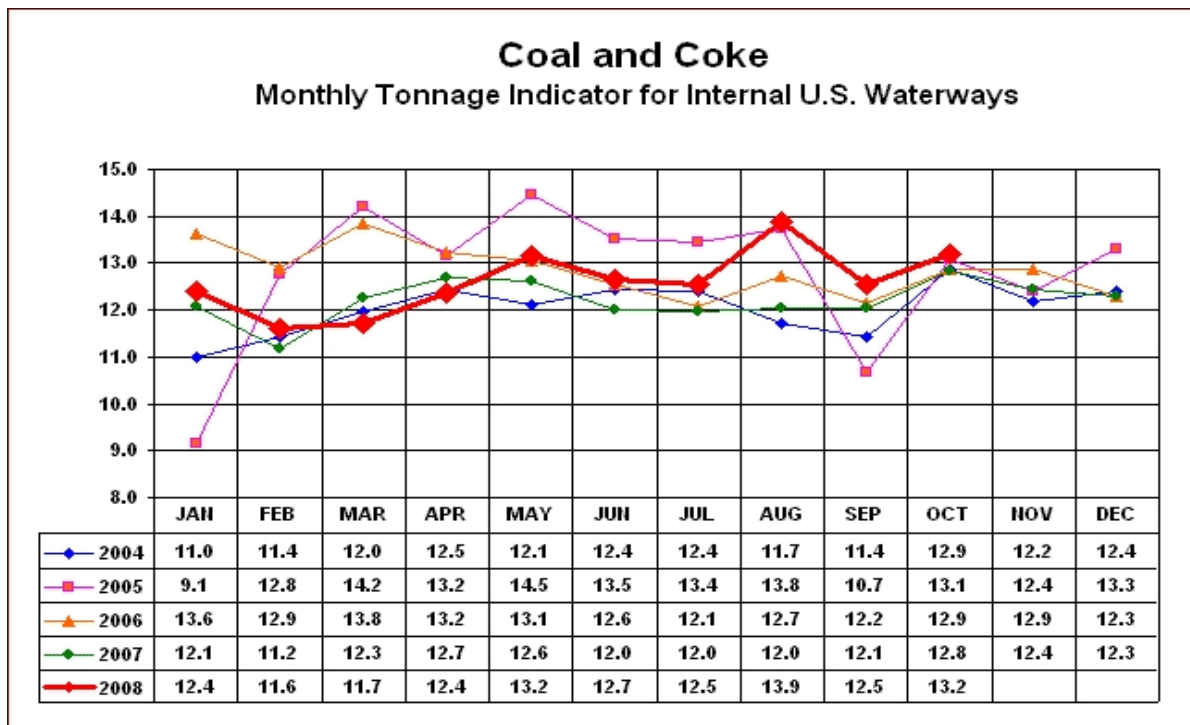
Data reflect closings on weekends and holidays.

Source: Platts Metals Week

Trade Tech's Uranium (UF6) Monthly Spot Prices (US\$/kg as UF6)



Source: Trade Tech, Uranium Info Website – <http://www.uranium.info>

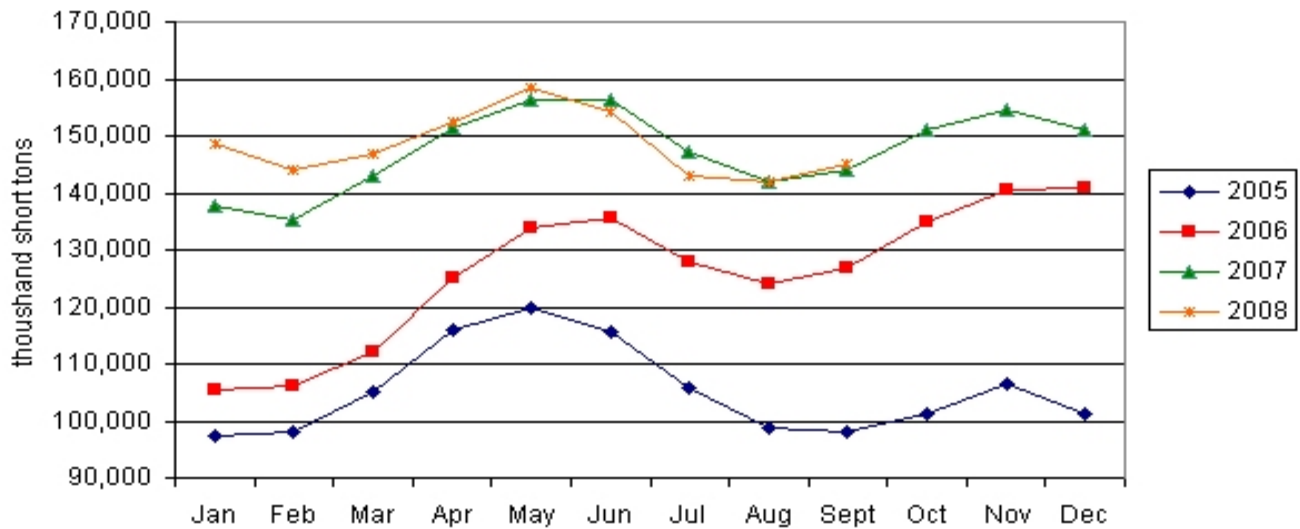


Source: U.S. Army Corps of Engineers, Waterborne Commerce Statistics Center

Average Weekly Coal Commodity Spot Prices (Dollars per Short Ton)					
Week Ended	Central Appalachia 12,500 Btu, 1.2 SO ₂	Northern Appalachia 13,000 Btu, <3.0 SO ₂	Illinois Basin 11,800 Btu, 5.0 SO ₂	Powder River Basin 8,800 Btu, 0.8 SO ₂	Uinta Basin 11,700 Btu, 0.8 SO ₂
31-Oct-08	\$119.25	\$111.50	\$84.00	\$14.50	\$73.00
07-Nov-08	\$119.25	\$111.50	\$84.00	\$14.50	\$73.00
14-Nov-08	\$111.15	\$111.50	\$84.00	\$14.50	\$73.00
21-Nov-08	\$111.15	\$111.50	\$84.00	\$14.50	\$73.00
28-Nov-08	\$111.15	\$101.50	\$83.00	\$14.50	\$73.00
05-Dec-08	\$89.80	\$101.50	\$78.00	\$12.50	\$73.00
12-Dec-08	\$81.55	\$101.50	\$78.00	\$12.50	\$73.00

Source: Energy Information Administration (from Platts *Coal Outlook*, "Weekly Price Survey")

EIA Electric Power Sector Coal Stocks



Source: Energy Information Administration

USGS Production of Selected Mineral Commodities	2008 Year to Date - 3rd Quarter	2007 Year to Date - 3rd Quarter	Percent Change
Aluminum, secondary (000 Mt.)	729.0	708.0	3%
Cement (Mil. Mt.)	65.6	70.0	-6%
Gypsum (Mil. Mt.)	14.1	16.4	-14%
Iron Ore (Mil. Mt.)	40.9	38.6	6%
Phosphate rock (Mil. Mt.)	23.0	22.1	4%
Sand & gravel, construction (Mil. Mt.)	754.0	940.0	-20%
Soda ash (Mil. Mt.)	8.4	8.3	1%
Stone, crushed (Mil. Mt.)	1,020.0	1,220.0	-16%
Zinc (000 Mt.)	628.0	574.0	9%

Source: U.S. Geological Survey, Mineral Industry Surveys, *U.S. Production of Selected Mineral Commodities in the Third Quarter 2008, November 2008*