

---

National Mining Association

# Weekly Statistical Summary

December 21, 2007 Edition  
(Data for Week Ending December 15, 2007)

Prepared by  
National Mining Association



Suite 500 East, 101 Constitution Avenue, NW  
Washington, DC, 20001  
Phone (202) 463-2600  
Visit us at <http://www.nma.org>

# NMA Weekly Statistical Summary

Vol. 45, No. 50  
Dated 12/21/07

PRODUCTION, CONSUMPTION & TRADE						
	Week Ended			Cumulative Jan 1 to		
	12/15/07	12/16/06	% Chng	12/15/07	12/16/06	% Chng
<b>EIA Coal Production (000 Tons):</b>						
Week Ended/Year to Date	22,191	22,915	-3.2%	1,100,578	1,115,647	-1.4%
52 Weeks Ended	1,145,914	1,160,093	-1.2%			
<b>Month Ended -- November</b>						
	November 07/06		% Chng	Jan - Nov 07/06		% Chng
	98,244	96,526	1.8%	1,056,389	1,066,687	-1.0%
MONTH ENDED AND CUMULATIVE NUMBERS ARE PRELIMINARY AND SUBJECT TO CHANGE						
<b>DOC Bituminous Coal Trade (000 Tons)</b>						
<b>Exports:</b>						
	October 07/06		% Chng	Jan - Oct 07/06		% Chng
Metallurgical	2,575	2,297	12.1%	26,432	22,796	16.0%
Steam	2,319	1,548	49.8%	20,155	17,602	14.5%
<b>Imports:</b>						
	2,896	3,214	-9.9%	30,646	30,527	0.4%
<b>EI Electric Output (Mil. Kwh)</b>						
	Week Ended			Cumulative Jan 1 to		
	12/15/07	12/16/06	% Chng	12/15/07	12/16/06	% Chng
EI Electric Output (Mil. Kwh)	79,780	75,777	5.3%	3,945,150	3,842,004	2.7%
<b>AISI Raw Steel Output (000 Tons)</b>						
	2,057	1,733	18.7%	102,351	104,787	-2.3%
<b>EIA U.S. PETROLEUM DATA</b>						
4-Week Averages 000 Barrels per Day						
<b>PETROLEUM SUPPLY:</b>						
	Week Ending			Cumulative Daily Averages		
	12/14/07	12/14/06	% Chng	2007	2006	% Chng
Domestic Crude	5,119	5,133	-0.3	5,119	5,099	0.4
Net Imports (Incl. SPR)	9,701	9,708	0.1	9,978	10,114	-1.3
SPR Stocks W/D or Added	-30	0	--	-20	-12	--
Other Stocks W/D or added	596	419	--	61	-4	--
Natural Gas Liquids Prod.	2,397	2,453	-2.3	2,387	2,231	7.0



**NMA**

THE AMERICAN RESOURCE

National Mining Association Web Site: [http:// www.nma.org](http://www.nma.org)

## EIA Estimated Weekly U.S. Coal Production Overview (Thousand Short Tons)

Coal-Producing Region and State	Week Ended			Year To Date			52 Weeks Ended		
	12/15/2007	12/8/2007	12/16/2006	12/15/2007	12/15/2006	Percent Change	12/15/2007	12/16/2006	Percent Change
Alabama	377	366	352	18,441	18,398	0.2	19,063	19,096	-0.2
Alaska	29	28	30	1,272	1,369	-7.1	1,328	1,417	-6.2
Arizona	134	131	161	7,578	7,929	-4.4	7,866	8,337	-5.6
Arkansas	2	1	1	77	20	278.4	79	20	289.2
Colorado	726	705	717	35,085	34,856	0.7	36,475	36,176	0.8
Illinois	674	654	650	32,835	31,464	4.4	34,073	32,645	4.4
Indiana	709	689	698	34,405	33,782	1.8	35,719	35,180	1.5
Kansas	10	10	11	423	400	5.6	449	406	10.4
<b>Kentucky Total</b>	<b>2,339</b>	<b>2,271</b>	<b>2,243</b>	<b>110,836</b>	<b>116,864</b>	<b>-5.2</b>	<b>115,048</b>	<b>121,284</b>	<b>-5.1</b>
Eastern	1,720	1,670	1,707	83,153	90,630	-8.3	86,352	94,104	-8.2
Western	619	601	536	27,682	26,233	5.5	28,695	27,181	5.6
Louisiana	76	94	99	2,943	3,885	-24.3	3,161	4,074	-22.4
Maryland	74	72	53	2,505	4,954	-49.4	2,604	5,148	-49.4
Mississippi	37	82	67	3,468	3,630	-4.5	3,628	3,771	-3.8
Missouri	5	4	6	224	384	-41.7	234	410	-42.9
Montana	856	831	837	40,350	40,077	0.7	41,996	41,653	0.8
New Mexico	497	482	534	23,453	24,908	-5.8	24,447	26,054	-6.2
North Dakota	588	571	623	28,343	29,250	-3.1	29,504	30,400	-2.9
Ohio	448	435	439	21,254	21,897	-2.9	22,064	22,849	-3.4
Oklahoma	39	37	35	1,660	1,934	-14.1	1,725	2,006	-14.0
<b>Pennsylvania Total</b>	<b>1,268</b>	<b>1,232</b>	<b>1,263</b>	<b>62,732</b>	<b>63,784</b>	<b>-1.6</b>	<b>65,106</b>	<b>66,365</b>	<b>-1.9</b>
Anthracite	35	34	29	1,496	1,477	1.3	1,556	1,533	1.5
Bituminous	1,234	1,198	1,233	61,236	62,306	-1.7	63,549	64,832	-2.0
Tennessee	51	49	52	2,498	2,710	-7.8	2,592	2,833	-8.5
Texas	879	854	885	40,287	43,698	-7.8	42,023	45,700	-8.0
Utah	474	461	533	22,704	25,003	-9.2	23,706	26,000	-8.8
Virginia	561	544	558	25,873	28,823	-10.2	26,901	29,799	-9.7
Washington	0	0	0	0	2,580	-100.0	s	2,819	-100.0
<b>West Virginia Total</b>	<b>3,001</b>	<b>2,914</b>	<b>2,861</b>	<b>148,216</b>	<b>146,900</b>	<b>0.9</b>	<b>153,595</b>	<b>152,548</b>	<b>0.7</b>
Northern	910	883	762	42,640	40,952	4.1	44,064	42,521	3.6
Southern	2,092	2,031	2,099	105,577	105,948	-0.4	109,531	110,027	-0.5
Wyoming	8,340	9,216	9,206	433,115	426,147	1.6	452,529	443,103	2.1
<b>Appalachian Total</b>	<b>7,499</b>	<b>7,282</b>	<b>7,284</b>	<b>364,672</b>	<b>378,097</b>	<b>-3.6</b>	<b>378,276</b>	<b>392,741</b>	<b>-3.7</b>
<b>Interior Total</b>	<b>3,049</b>	<b>3,026</b>	<b>2,988</b>	<b>144,006</b>	<b>145,432</b>	<b>-1.0</b>	<b>149,787</b>	<b>151,393</b>	<b>-1.1</b>
<b>Western Total</b>	<b>11,644</b>	<b>12,424</b>	<b>12,643</b>	<b>591,901</b>	<b>592,118</b>	<b>*</b>	<b>617,851</b>	<b>615,958</b>	<b>0.3</b>
<b>East of Miss. River</b>	<b>9,538</b>	<b>9,307</b>	<b>9,235</b>	<b>463,064</b>	<b>473,208</b>	<b>-2.1</b>	<b>480,392</b>	<b>491,518</b>	<b>-2.3</b>
<b>West of Miss. River</b>	<b>12,653</b>	<b>13,424</b>	<b>13,680</b>	<b>637,515</b>	<b>642,439</b>	<b>-0.8</b>	<b>665,522</b>	<b>668,575</b>	<b>-0.5</b>
Bituminous and Lignite	22,157	22,698	22,885	1,099,082	1,114,170	-1.4	1,144,358	1,158,560	-1.2
Anthracite	35	34	29	1,496	1,477	1.3	1,556	1,533	1.5
<b>U.S. Total</b>	<b>22,191</b>	<b>22,731</b>	<b>22,915</b>	<b>1,100,578</b>	<b>1,115,647</b>	<b>-1.4</b>	<b>1,145,914</b>	<b>1,160,093</b>	<b>-1.2</b>
Railroad Cars Loaded	141,883	146,175	148,542	7,141,723	7,178,992	-0.5	7,418,088	7,444,563	-0.4

Source: Energy Information Administration



Volume 75 No. 50

**OUTPUT FOR WEEK ENDED - Dec 15, 2007**

**Dec 19, 2007**

The net available amount of electric energy distributed by the Total Electric Utility Industry+ for the week ended Saturday, Dec 15, 2007 was **79,780** gigawatthours (GWh), according to the Edison Electric Institute. This is equivalent to **180** on the weekly electric output index.

**WEEKLY ELECTRIC OUTPUT BY GEOGRAPHIC DIVISION**  
(48 CONTIGUOUS STATES)

	Week Ended December 15		52 Weeks Ended December 15	
	GWh Output	% Increase Over Corresponding Week of 2006	GWh Output	% Increase Over Corresponding Period of 2006
New England	2,742	7.7	134,197	1.6
Mid-Atlantic	9,093	8.0	457,623	2.9
Central Industrial	14,722	5.3	720,891	3.5
West Central	7,095	6.8	351,570	2.1
Southeast	20,435	-0.9	1,103,020	2.6
South Central	10,812	9.0	597,106	-0.1
Rocky Mountain	5,644	13.9	276,630	6.6
Pacific Northwest	3,793	13.8	158,502	4.8
Pacific Southwest	5,444	1.7	292,474	0.3
Total United States	79,780	5.3	4,092,013	2.5

**WEEKLY ELECTRIC OUTPUT IN PREVIOUS WEEKS--GWh**

Week Ended	2007	Week Ended	2006	% Inc. (07/06)	52 Weeks Ended	2007	% Inc. (07/06)
Nov 24	71,597	Nov 25	71,398	0.3	Nov 24	4,087,555	2.2
Dec 01	76,233	Dec 02	73,799	3.3	Dec 01	4,089,988	2.3
Dec 08	79,689	Dec 09	81,668	-2.4	Dec 08	4,088,009	2.2
Dec 15	79,780	Dec 16	75,777	5.3	Dec 15	4,092,013	2.5
Dec 15	3,945,150	Dec 16	3,842,004	2.7	YEAR TO DATE, FIRST 50 WEEKS		

**WEEKLY ELECTRIC OUTPUT INDEX--TOTAL U.S.\***  
**SEASONALLY ADJUSTED 1982 = 100**

Week Ended	2007	Week Ended	2006	Week Ended	2005
Nov 24	179	Nov 25	179	Nov 26	181
Dec 01	193	Dec 02	188	Dec 03	176
Dec 08	184	Dec 09	192	Dec 10	186
Dec 15	180	Dec 16	173	Dec 17	185

\* Excludes Alaska and Hawaii.

+ Includes investor-owned companies, cooperatives and government-owned utilities.

Copyright © 2007 Edison Electric Institute. All rights reserved.

## WEEKLY ELECTRIC OUTPUT BY GEOGRAPHIC DIVISION (48 CONTIGUOUS STATES)

	Week Ended			NMA CUMULATIVE JANUARY 1 to			52 Weeks Ended		
	15-Dec 2007 GWh Output	16-Dec 2006 GWh Output	% Increase Over Corresponding Week of 2006	15-Dec 2007 GWh Output	16-Dec 2006 GWh Output	% Increase Over Corresponding Week of 2006	15-Dec 2007 GWh Output	16-Dec 2006 GWh Output	% Increase Over Corresponding Week of 2006
<b>New England</b>	2,742	2,547	7.7%	<b>129,175</b>	<b>126,802</b>	<b>1.9%</b>	134,197	132,041	1.6%
<b>Mid-Atlantic</b>	9,093	8,418	8.0%	<b>441,236</b>	<b>427,363</b>	<b>3.2%</b>	457,623	444,564	2.9%
<b>Central Industrial</b>	14,722	13,979	5.3%	<b>694,885</b>	<b>668,880</b>	<b>3.9%</b>	720,891	696,567	3.5%
<b>West Central</b>	7,095	6,646	6.8%	<b>338,797</b>	<b>331,378</b>	<b>2.2%</b>	351,570	344,453	2.1%
<b>Southeast</b>	20,435	20,623	-0.9%	<b>1,065,341</b>	<b>1,034,414</b>	<b>3.0%</b>	1,103,020	1,075,254	2.6%
<b>South Central</b>	10,812	9,924	8.9%	<b>576,328</b>	<b>577,592</b>	<b>-0.2%</b>	597,106	597,621	-0.1%
<b>Rocky Mountain</b>	5,644	4,953	14.0%	<b>266,345</b>	<b>250,338</b>	<b>6.4%</b>	276,630	259,624	6.6%
<b>Pacific Northwest</b>	3,793	3,334	13.8%	<b>151,280</b>	<b>144,151</b>	<b>4.9%</b>	158,502	151,215	4.8%
<b>Pacific Southwest</b>	<u>5,444</u>	<u>5,353</u>	1.7%	<u><b>281,762</b></u>	<u><b>281,089</b></u>	<b>0.2%</b>	<u>292,474</u>	<u>291,579</u>	0.3%
<b>Total United States *</b>	79,780	75,777	5.3%	<b>3,945,149</b>	<b>3,842,007</b>	<b>2.7%</b>	4,092,013	3,992,918	2.5%

**Notes:** EEI output data are an estimate of electricity load made available for distribution derived as weekly net generation + purchases from non-utilities + net imports - exports - sales for resale. It is not meant to be a measure of electricity generation for the U.S. EEI survey data represent the majority of national distribution (large utilities, large government power projects, some independent and large municipal power projects). The remaining segment of the industry (smaller producers) is estimated. Non-utility generation is captured via direct sales to utilities.

\* Excludes Alaska and Hawaii

\*\* Less than one-tenth of one percent

SOURCE: Edison Electric Institute (EEI), *Weekly Electric Output Report*.

AMERICAN IRON AND STEEL INSTITUTE  
 1140 Connecticut Avenue, Suite 705  
 Washington, D.C. 20036

December 17, 2007

**ESTIMATED WEEKLY RAW STEEL\* PRODUCTION**

<u>Period</u>	<u>Thousand Net Tons</u>	<u>Percent Change from Previous Period</u>	<u>Percent Capability Utilization**</u>	<u>Production by District</u>		
				<u>Week Ending Dec 15</u>	<u>Dec 8</u>	
<b><u>Week Ending</u></b>				North East Coast	147	140
				Pgh/Youngstown	184	189
				Lake Erie	103	95
				Detroit	134	129
				Indiana/Chicago	533	523
				Midwest	253	261
				Southern	625	651
				Western	<u>78</u>	<u>76</u>
				Total	2057	2064
<b><u>Year-to-Date+</u></b>						
Dec 15, 2007	102,351	-2.3	86.0			
Dec 15, 2006	104,787	-	87.5			

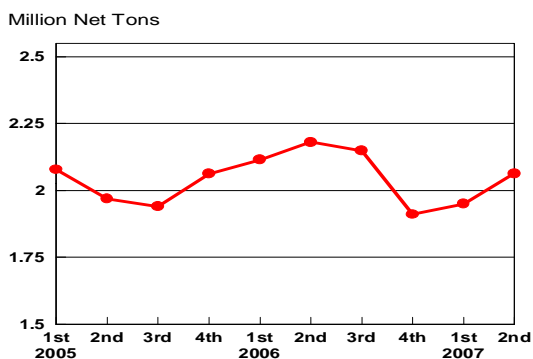
\*Raw steel production tonnage included in this report is estimated based on a sampling of steel producers. Therefore, this report should be used primarily to assess production trends. The AISI production report "AIS 7," produced monthly and available by subscription, provides a more accurate summary of steel production based on data supplied by companies representing approximately 75% of U.S. production capacity.

+Includes revisions for previous months

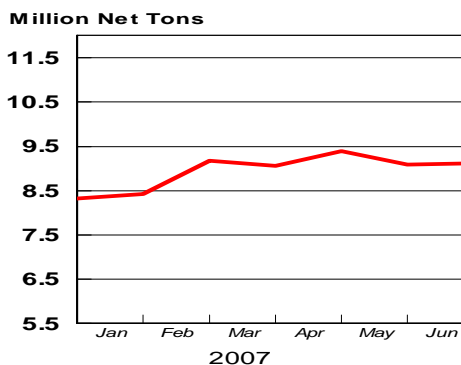
NOTE: Capability for the Fourth Quarter 2007 is approximately 31.3 million net tons vs 30.7 million net tons for the same period last year, and 30.1 million tons for the third quarter of 2007.

Capability -	2003 approx.	2004	2005	2006	2007
	2.3 million tons/week	2.2	2.3	2.4	2.4

**Average Weekly Raw Steel Production**

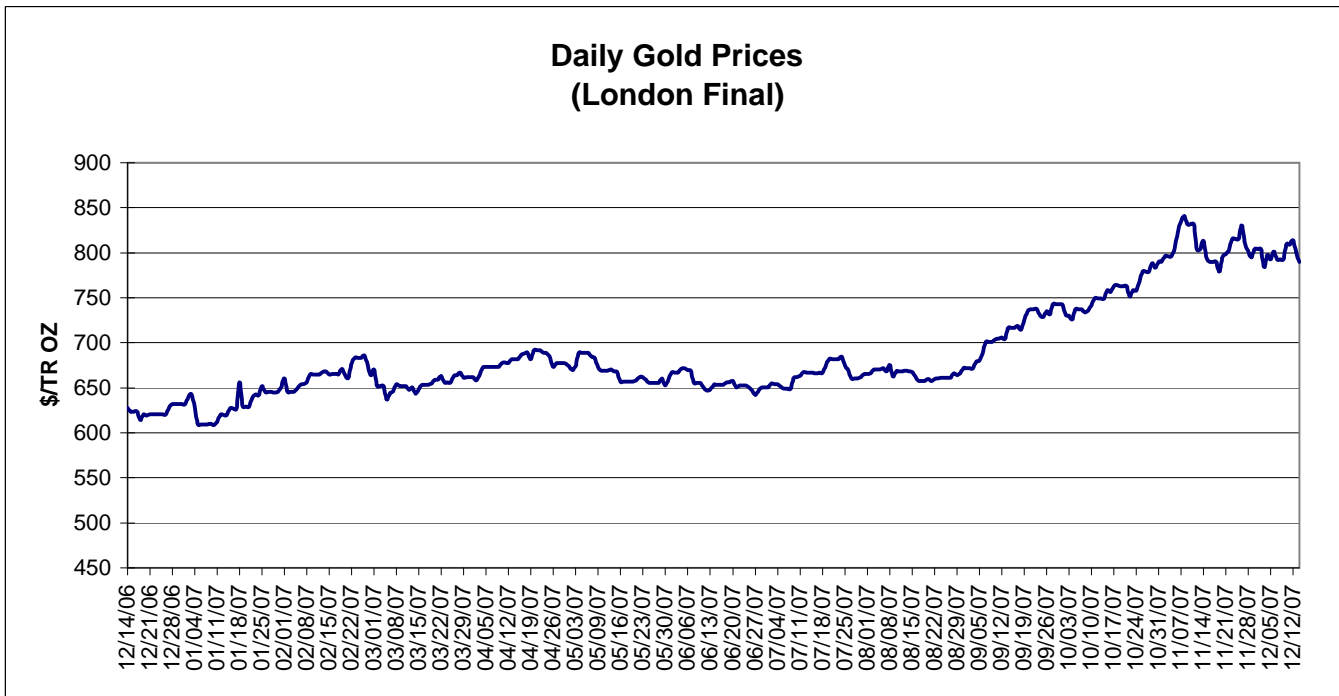
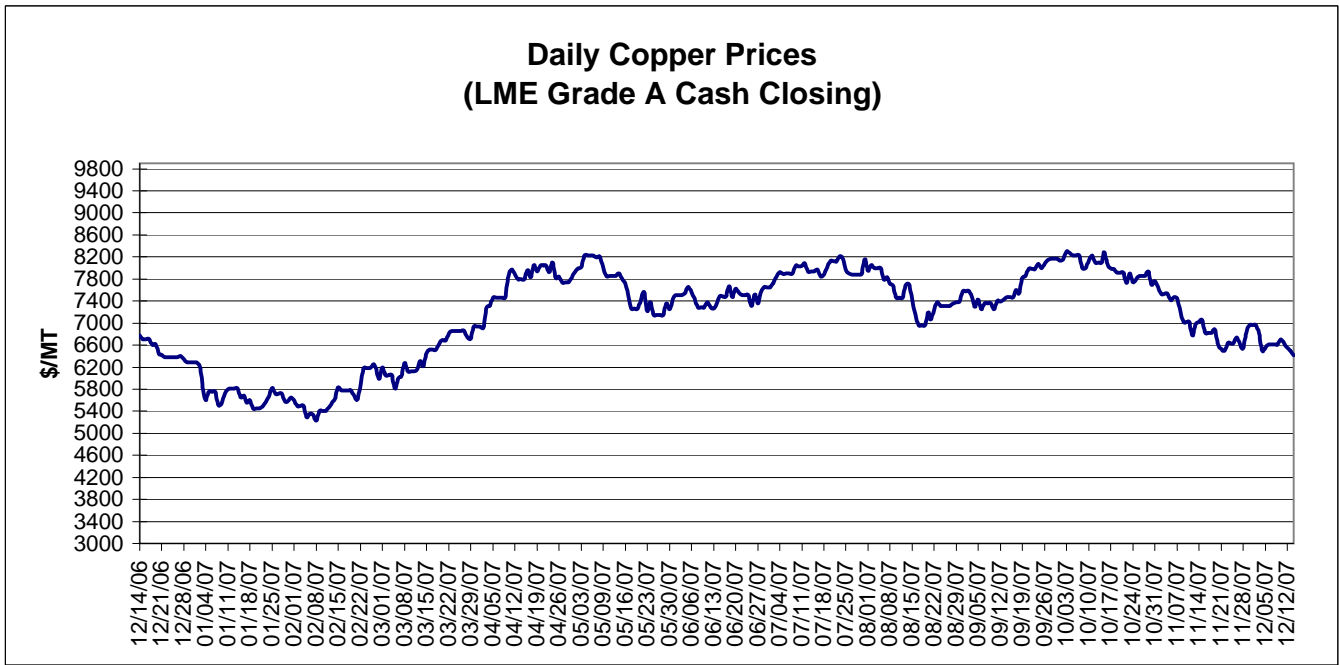


**MONTHLY RAW STEEL PRODUCTION**



\*Steel in the first solid state after melting suitable for further processing or sale, including ingots, steel for castings and strand or pressure cast blooms, slabs, or other product forms.

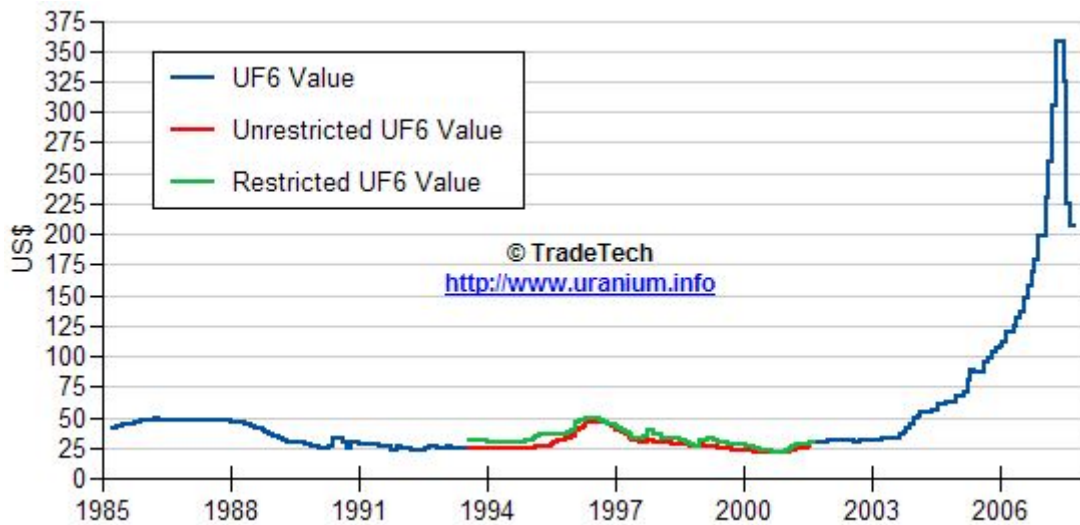
\*\* Based on tonnage capability to produce raw steel for a sustained full order book.



Data reflect closings on weekends and holidays.

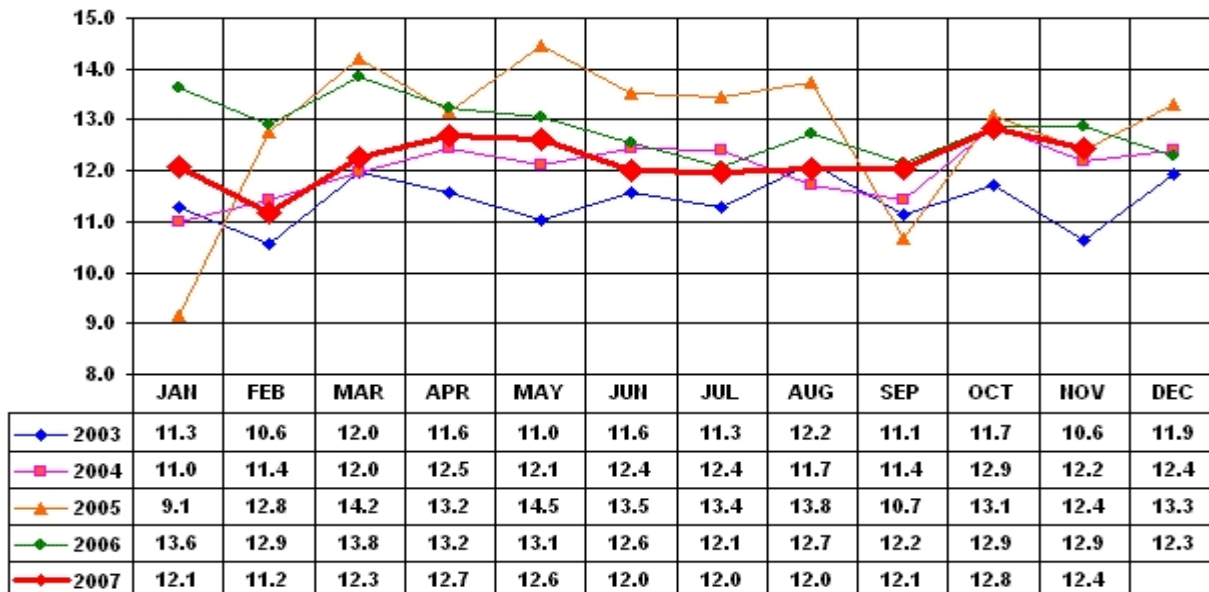
Source: Platts Metals Week

### Trade Tech's Uranium (UF6) Monthly Spot Prices (US\$/kg as UF6)



Source: Trade Tech, Uranium Info Website – <http://www.uranium.info>

### Coal and Coke Monthly Tonnage Indicator for Internal U.S. Waterways



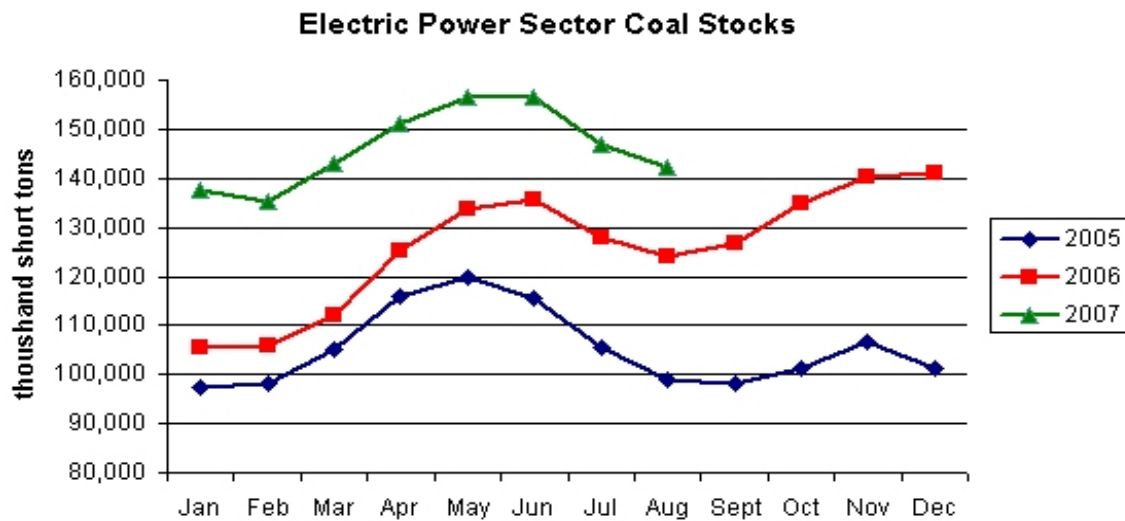
Source: U.S. Army Corps of engineers, Waterborne Commerce Statistics Center

**EIA Weekly Spot Coal Prices**

The following average spot coal prices appear in the graphic below, for the previous and most recent weeks:

Week Ended	Central Appalachia 12,500 Btu, 1.2 SO2	Northern Appalachia 13,000 Btu, <3.0 SO2	Illinois Basin 11,800 Btu, 5.0 SO2	Powder River Basin 8,800 Btu, 0.8 SO2	Uinta Basin 11,700 Btu, 0.8 SO2
02-Nov-07	\$49.90	\$46.50	\$33.50	\$11.05	\$24.00
09-Nov-07	\$49.90	\$46.50	\$33.50	\$11.05	\$24.00
16-Nov-07	\$52.95	\$55.25	\$33.50	\$11.05	\$24.00
23-Nov-07	\$52.95	\$55.25	\$33.50	\$11.05	\$24.00
30-Nov-07	\$56.80	\$55.25	\$33.50	\$11.15	\$24.00
07-Dec-07	\$57.70	\$55.25	\$33.50	\$11.50	\$24.00
14-Dec-07	\$57.70	\$55.25	\$33.50	\$11.50	\$24.00

Source: Energy Information Administration (from Platts *Coal Outlook*, "Weekly Price Survey")



Source: Energy Information Administration