

---

National Mining Association

# Weekly Statistical Summary

December 26, 2008 Edition  
(Data for Week Ending December 20, 2008)

Prepared by  
National Mining Association



Suite 500 East, 101 Constitution Avenue, NW  
Washington, DC, 20001  
Phone (202) 463-2600  
Visit us at <http://www.nma.org>

# NMA Weekly Statistical Summary

Vol. 46, No. 51  
Dated 12/26/08

PRODUCTION, CONSUMPTION & TRADE						
	Week Ended			* Cumulative Jan 1 to		
	12/20/08	12/22/07	% Chng	12/20/08	12/20/07	% Chng
<b>EIA Coal Production (000 Tons):</b>						
Week Ended/Year to Date	21,746	21,759	-0.1%	1,137,554	1,116,023	1.9%
52 Weeks Ended	1,162,812	1,143,533	1.7%			
* Due to leap year, 2008 cumulative reflects one extra day of tonnage.						
	November 08/07		% Chng	Jan - Nov 08/07		% Chng
<b>Month Ended -- November</b>	94,991	96,910	-2.0%	1,070,917	1,053,497	1.7%
MONTH ENDED AND CUMULATIVE NUMBERS ARE PRELIMINARY AND SUBJECT TO CHANGE						
DOC Bituminous Coal Trade (000 Tons)						
	Oct 08/07		% Chng	Jan - Oct 08/07		% Chng
<b>Exports:</b>						
Metallurgical	4,494	2,575	74.5%	36,727	26,432	38.9%
Steam	3,827	2,319	65.0%	30,367	20,155	50.7%
<b>Imports:</b>	2,921	2,896	0.9%	28,028	30,646	-8.5%
	Week Ended			* Cumulative Jan 1 to		
	12/20/08	12/22/07	% Chng	12/20/08	12/22/07	% Chng
<b>EEl Electric Output (Mil. Kwh)</b>	79,709	80,631	-1.1%	3,985,006	4,025,781	-1.0%
<b>AISI Raw Steel Output (000 Tons)</b>	1,022	2,102	-51.4%	99,319	105,206	-5.6%
EIA U.S. PETROLEUM DATA						
4-Week Averages						
000 Barrels per Day						
	Week Ending			Cumulative Daily Averages		
	12/19/08	12/19/07	% Chng	2008	2007	% Chng
<b>PETROLEUM SUPPLY:</b>						
Domestic Crude	5,052	5,042	0.2	4,950	5,065	-2.3
Net Imports (Incl. SPR)	9,536	9,869	-3.4	9,753	10,003	-2.5
SPR Stocks W/D or Added	0	-46	--	-12	-22	--
Other Stocks W/D or added	94	370	--	-99	58	--
Natural Gas Liquids Prod.	2,387	2,537	-5.9	2,272	2,411	-5.8



**NMA**

THE AMERICAN RESOURCE National Mining Association Web Site: [http:// www.nma.org](http://www.nma.org)

## EIA Estimated Weekly U.S. Coal Production Overview (Thousand Short Tons)

Coal-Producing Region and State	Week Ended			Year to Date		Percent Change	52 Weeks Ended		Percent Change
	12/20/2008	12/13/2008	12/22/2007	12/20/2008	12/20/2007		12/20/2008	12/22/2007	
Alabama	371	406	381	20,231	19,049	6.2	20,626	19,390	6.4
Alaska	25	27	22	1,331	1,296	2.7	1,355	1,325	2.2
Arizona	144	158	150	7,811	7,796	0.2	7,967	7,950	0.2
Arkansas	1	1	2	57	80	-28.2	60	82	-27.5
Colorado	639	700	693	32,788	35,443	-7.5	33,546	36,286	-7.6
Illinois	555	608	503	31,112	32,202	-3.4	31,653	32,892	-3.8
Indiana	670	733	675	35,068	34,142	2.7	35,781	34,892	2.5
Kansas	5	6	7	279	412	-32.2	286	428	-33.0
<b>Kentucky Total</b>	<b>2,056</b>	<b>2,251</b>	<b>2,186</b>	<b>115,825</b>	<b>112,739</b>	<b>2.7</b>	<b>118,148</b>	<b>115,134</b>	<b>2.6</b>
Eastern	1,534	1,679	1,643	87,181	85,177	2.4	88,923	86,982	2.2
Western	522	572	543	28,644	27,562	3.9	29,225	28,152	3.8
Louisiana	84	88	90	3,813	2,998	27.2	3,917	3,123	25.5
Maryland	52	57	28	2,483	2,266	9.6	2,513	2,317	8.5
Mississippi	38	39	65	2,685	3,446	-22.1	2,767	3,544	-21.9
Missouri	5	6	5	244	230	5.9	249	235	5.9
Montana	821	899	965	43,080	42,069	2.4	44,138	43,123	2.4
New Mexico	568	622	467	26,726	23,861	12.0	27,217	24,411	11.5
North Dakota	545	596	587	28,821	28,881	-0.2	29,429	29,525	-0.3
Ohio	446	488	478	24,843	21,966	13.1	25,347	22,434	13.0
Oklahoma	33	36	30	1,424	1,611	-11.6	1,456	1,645	-11.5
<b>Pennsylvania Total</b>	<b>1,142</b>	<b>1,250</b>	<b>1,221</b>	<b>62,789</b>	<b>63,651</b>	<b>-1.4</b>	<b>64,072</b>	<b>64,995</b>	<b>-1.4</b>
Anthracite	20	21	30	1,495	1,531	-2.3	1,527	1,567	-2.6
Bituminous	1,123	1,229	1,190	61,294	62,120	-1.3	62,545	63,428	-1.4
Tennessee	48	53	51	2,374	2,589	-8.3	2,428	2,640	-8.0
Texas	697	763	831	37,470	40,808	-8.2	38,380	41,873	-8.3
Utah	432	473	488	23,145	23,679	-2.3	23,667	24,242	-2.4
Virginia	480	526	375	24,090	24,979	-3.6	24,490	25,522	-4.0
Washington	--	--	--	--	--	--	0	s	-100.0
<b>West Virginia Total</b>	<b>2,894</b>	<b>3,168</b>	<b>2,915</b>	<b>154,991</b>	<b>149,784</b>	<b>3.5</b>	<b>158,089</b>	<b>152,889</b>	<b>3.4</b>
Northern	752	823	746	39,557	41,254	-4.1	40,360	42,064	-4.1
Southern	2,142	2,345	2,168	115,434	108,529	6.4	117,729	110,825	6.2
Wyoming	8,993	9,351	8,543	454,075	440,047	3.2	465,231	452,636	2.8
<b>Appalachian Total</b>	<b>6,967</b>	<b>7,626</b>	<b>7,092</b>	<b>378,982</b>	<b>369,460</b>	<b>2.6</b>	<b>386,488</b>	<b>377,168</b>	<b>2.5</b>
<b>Interior Total</b>	<b>2,612</b>	<b>2,852</b>	<b>2,751</b>	<b>140,796</b>	<b>143,491</b>	<b>-1.9</b>	<b>143,774</b>	<b>146,866</b>	<b>-2.1</b>
<b>Western Total</b>	<b>12,168</b>	<b>12,826</b>	<b>11,915</b>	<b>617,776</b>	<b>603,072</b>	<b>2.4</b>	<b>632,549</b>	<b>619,499</b>	<b>2.1</b>
<b>East of Miss. River</b>	<b>8,753</b>	<b>9,579</b>	<b>8,878</b>	<b>476,491</b>	<b>466,812</b>	<b>2.1</b>	<b>485,915</b>	<b>476,649</b>	<b>1.9</b>
<b>West of Miss. River</b>	<b>12,993</b>	<b>13,726</b>	<b>12,880</b>	<b>661,063</b>	<b>649,211</b>	<b>1.8</b>	<b>676,897</b>	<b>666,885</b>	<b>1.5</b>
Bituminous and Lignite	21,727	23,283	21,728	1,136,059	1,114,492	1.9	1,161,286	1,141,966	1.7
Anthracite	20	21	30	1,495	1,531	-2.3	1,527	1,567	-2.6
<b>U.S. Total</b>	<b>21,746</b>	<b>23,305</b>	<b>21,759</b>	<b>1,137,554</b>	<b>1,116,023</b>	<b>1.9</b>	<b>1,162,812</b>	<b>1,143,533</b>	<b>1.7</b>
Railroad Cars Loaded	138,598	153,378	140,141	7,539,290	7,281,864	3.5	7,661,458	7,408,279	3.4

Source: Energy Information Administration



Volume 76 No. 51

**OUTPUT FOR WEEK ENDED - Dec 20, 2008**

Dec 24, 2008

The net available amount of electric energy distributed by the Total Electric Utility Industry+ for the week ended Saturday, Dec 20, 2008 was **79,709** gigawatthours (GWh), according to the Edison Electric Institute. This is equivalent to **182** on the weekly electric output index.

**WEEKLY ELECTRIC OUTPUT BY GEOGRAPHIC DIVISION**  
(48 CONTIGUOUS STATES)

	Week Ended December 20		52 Weeks Ended December 20	
	GWh Output	% Increase Over Corresponding Week of 2007	GWh Output	% Increase Over Corresponding Period of 2007
New England	2,615	-6.4	130,703	-2.8
Mid-Atlantic	8,905	-3.3	450,391	-1.8
Central Industrial	14,657	0.8	707,476	-2.0
West Central	7,285	3.3	345,113	-1.9
Southeast	19,815	-8.5	1,089,975	-1.5
South Central	10,755	-1.1	601,501	0.7
Rocky Mountain	5,982	5.7	276,183	-0.3
Pacific Northwest	4,305	10.1	167,086	5.2
Pacific Southwest	5,390	9.4	291,411	-0.2
Total United States	79,709	-1.1	4,059,838	-0.9

**WEEKLY ELECTRIC OUTPUT IN PREVIOUS WEEKS--GWh**

Week Ended	2008	Week Ended	2007	% Inc. (08/07)	52 Weeks Ended	2008	% Inc. (08/07)
Nov 29	72,608	Dec 01	76,233	-4.8	Nov 29	4,063,168	-0.7
Dec 06	77,524	Dec 08	79,689	-2.7	Dec 06	4,061,003	-0.7
Dec 13	79,537	Dec 15	79,780	-0.3	Dec 13	4,060,760	-0.8
Dec 20	79,709	Dec 22	80,631	-1.1	Dec 20	4,059,838	-0.9
Dec 20	<b>3,985,006</b>	Dec 22	<b>4,025,781</b>	<b>-1.0</b>	<b>YEAR TO DATE, FIRST 51 WEEKS</b>		

**WEEKLY ELECTRIC OUTPUT INDEX--TOTAL U.S.\***  
SEASONALLY ADJUSTED 1982 = 100

Week Ended	2008	Week Ended	2007	Week Ended	2006
Nov 29	182	Dec 01	193	Dec 02	188
Dec 06	179	Dec 08	184	Dec 09	192
Dec 13	181	Dec 15	180	Dec 16	173
Dec 20	182	Dec 22	180	Dec 23	170

\* Excludes Alaska and Hawaii.

+ Includes investor-owned companies, cooperatives and government-owned utilities.

Copyright © 2008 Edison Electric Institute. All rights reserved.

### WEEKLY ELECTRIC OUTPUT BY GEOGRAPHIC DIVISION (48 CONTIGUOUS STATES)

	Week Ended			NMA CUMULATIVE JANUARY WEEK ONE TO			52 Weeks Ended		
	20-Dec 2008 GWh Output	22-Dec 2007 GWh Output	% Increase Over Corresponding Week of 2007	20-Dec 2008 GWh Output	22-Dec 2007 GWh Output	% Increase Over Corresponding Week of 2007	20-Dec 2008 GWh Output	22-Dec 2007 GWh Output	% Increase Over Corresponding Week of 2007
<b>New England</b>	2,615	2,793	-6.4%	<b>128,225</b>	<b>131,968</b>	<b>-2.8%</b>	130,703	134,420	-2.8%
<b>Mid-Atlantic</b>	8,905	9,213	-3.3%	<b>442,175</b>	<b>450,449</b>	<b>-1.8%</b>	450,391	458,438	-1.8%
<b>Central Industrial</b>	14,657	14,545	0.8%	<b>694,768</b>	<b>709,430</b>	<b>-2.1%</b>	707,476	721,876	-2.0%
<b>West Central</b>	7,285	7,051	3.3%	<b>338,747</b>	<b>345,848</b>	<b>-2.1%</b>	345,113	351,910	-1.9%
<b>Southeast</b>	19,815	21,661	-8.5%	<b>1,070,320</b>	<b>1,087,002</b>	<b>-1.5%</b>	1,089,975	1,106,080	-1.5%
<b>South Central</b>	10,755	10,871	-1.1%	<b>590,562</b>	<b>587,199</b>	<b>0.6%</b>	601,501	597,524	0.7%
<b>Rocky Mountain</b>	5,982	5,660	5.7%	<b>270,758</b>	<b>272,005</b>	<b>-0.5%</b>	276,183	276,915	-0.3%
<b>Pacific Northwest</b>	4,305	3,910	10.1%	<b>163,195</b>	<b>155,190</b>	<b>5.2%</b>	167,086	158,793	5.2%
<b>Pacific Southwest</b>	5,390	4,927	9.4%	<b>286,259</b>	<b>286,689</b>	<b>-0.1%</b>	291,411	291,858	-0.2%
<b>Total United States *</b>	<u>79,709</u>	<u>80,631</u>	-1.1%	<b><u>3,985,009</u></b>	<b><u>4,025,780</u></b>	<b>-1.0%</b>	4,059,839	4,097,814	-0.9%

**Notes:** EEI output data are an estimate of electricity load made available for distribution derived as weekly net generation + purchases from non-utilities + net imports - exports - sales for resale. It is not meant to be a measure of electricity generation for the U.S. EEI survey data represent the majority of national distribution (large utilities, large government power projects, some independent and large municipal power projects). The remaining segment of the industry (smaller producers) is estimated. Non-utility generation is captured via direct sales to utilities.

\* Excludes Alaska and Hawaii

\*\* Less than one-tenth of one percent

SOURCE: Edison Electric Institute (EEI), *Weekly Electric Output Report*.

AMERICAN IRON AND STEEL INSTITUTE  
 1140 Connecticut Avenue, Suite 705  
 Washington, D.C. 20036

December 22, 2008

**ESTIMATED WEEKLY RAW STEEL\* PRODUCTION**

Period	Thousand Net Tons	Percent Change from Previous Period	Percent Capability Utilization**	Production by District	
				Week Ending	
				Dec. 20	Dec. 13
<b>Week Ending</b>					
December 20, 2008	1,022	-12.5	42.9	North East Coast 94	Pgh/Youngstown 110
December 20, 2007	2,102	-51.4	88.1	Lake Erie 24	Detroit 57
December 13, 2008	1,168	-1.2	49.0	Indiana/Chicago 269	Midwest 154
				Southern 342	Western 37
				<u>Total 1,022</u>	<u>1,168</u>
<b>Year-to-Date+</b>					
December 20, 2008	99,319	-5.6	82.1		
December 20, 2007	105,206	-	87.0		

\*Raw steel production tonnage included in this report is estimated based on a sampling of steel producers. Therefore, this report should be used primarily to assess production trends. The AISI production report "AIS 7," produced monthly and available by subscription, provides a more accurate summary of steel production based on data supplied by companies representing approximately 75% of U.S. production capacity.

+ Includes revisions for previous months

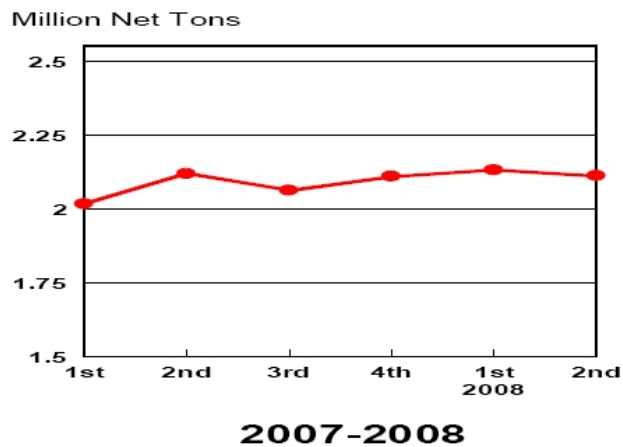
NOTE: Capability for the Third Quarter 2008 is approximately 31.4 million net tons vs 30.1 million net tons for the same period last year, and 31.0 million tons for the second quarter of 2008.

Capability -	2004 approx.	2.2 million tons/week
	2005	2.3
	2006	2.4
	2007	2.4
	2008	2.4

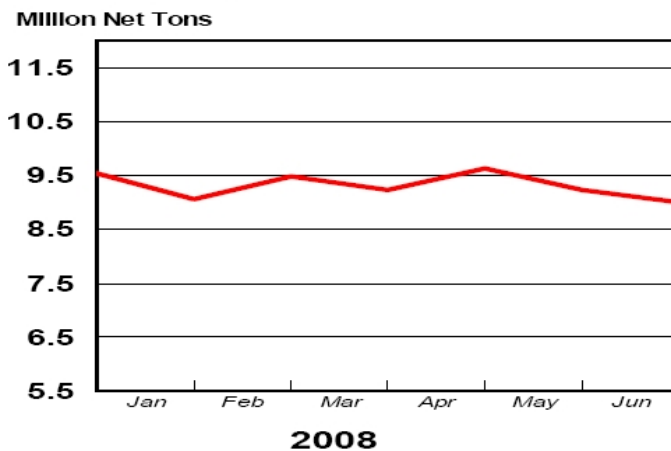
\*Steel in the first solid state after melting suitable for further processing or sale, including ingots, steel for castings and strand or pressure cast blooms, slabs, or other product forms.

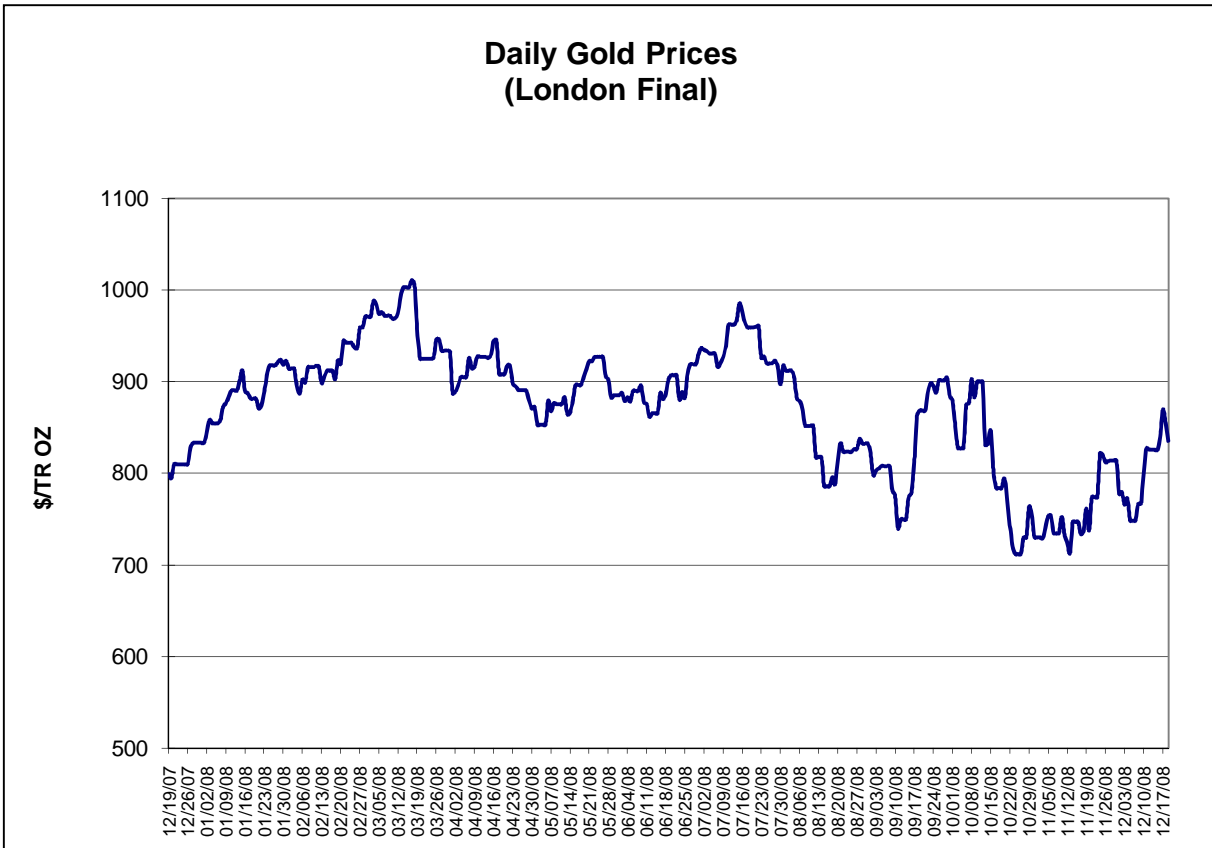
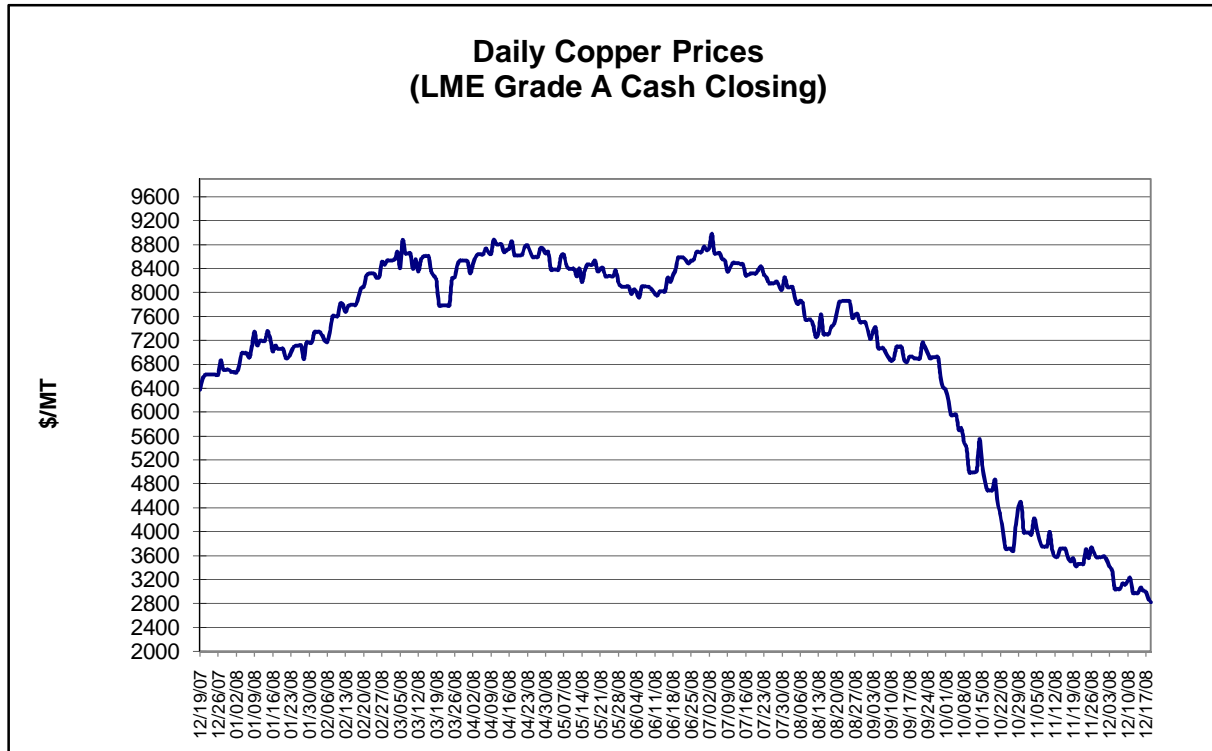
\*\* Based on tonnage capability to produce raw steel for a sustained full order book.

**Average Weekly Raw Steel Production**



**Monthly Raw Steel Production**

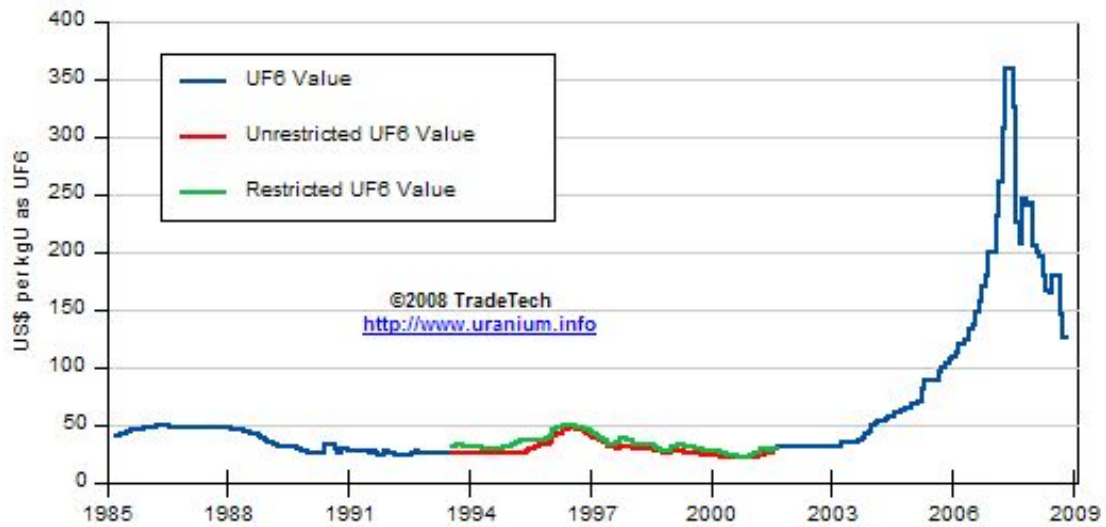




Data reflect closings on weekends and holidays.

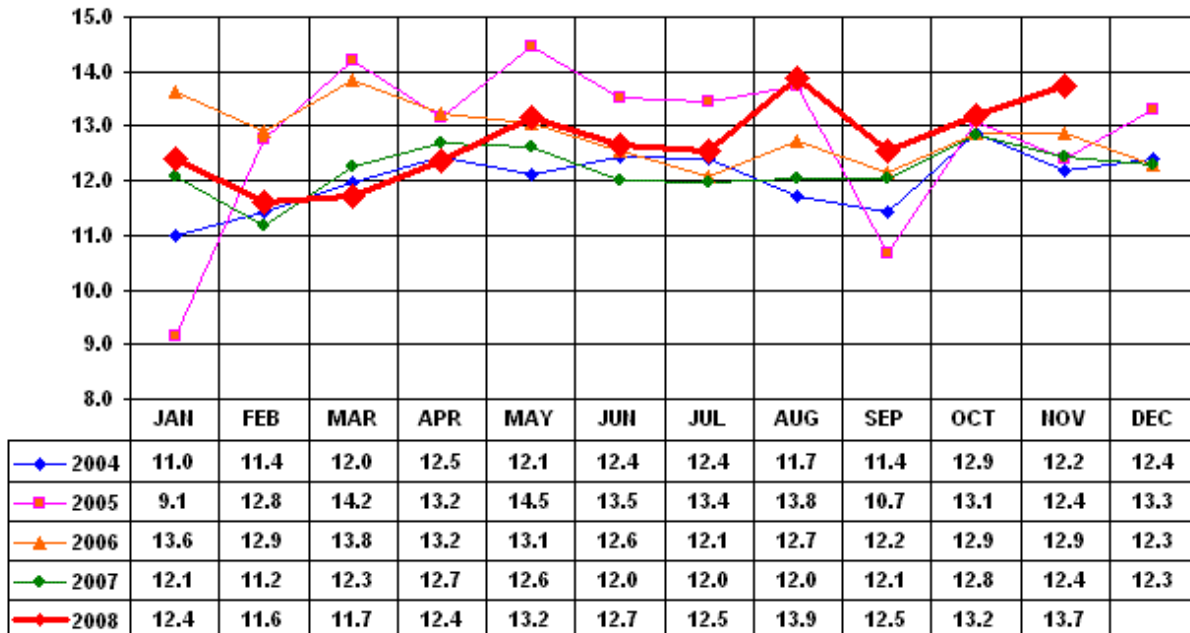
Source: Platts Metals Week

### Trade Tech's Uranium (UF6) Monthly Spot Prices (US\$/kg as UF6)



Source: Trade Tech, Uranium Info Website – <http://www.uranium.info>

### Coal and Coke Monthly Tonnage Indicator for Internal U.S. Waterways

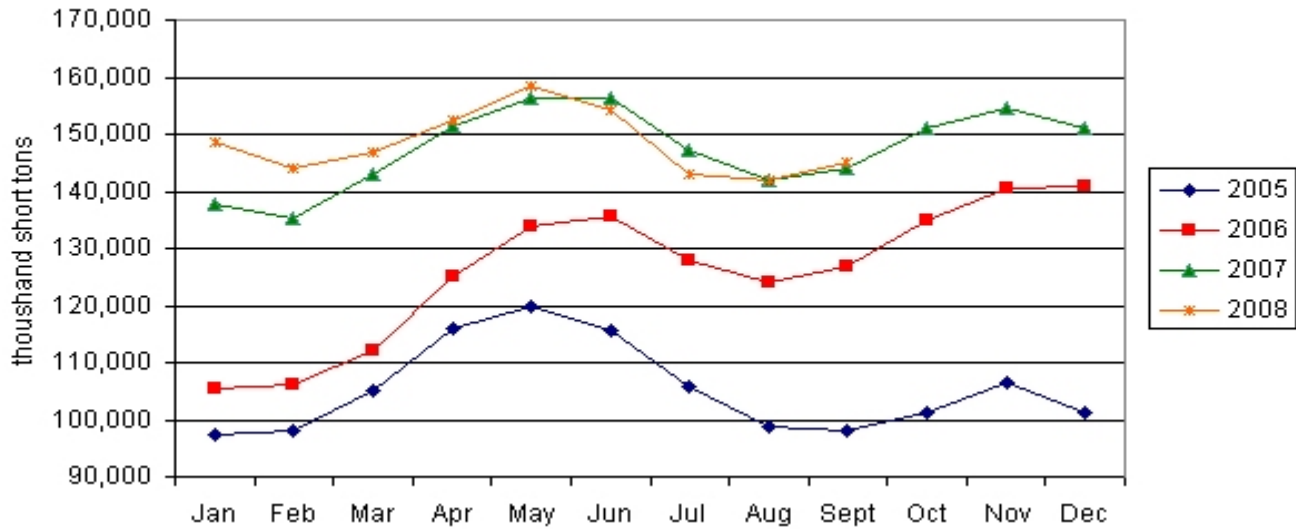


Source: U.S. Army Corps of Engineers, Waterborne Commerce Statistics Center

Average Weekly Coal Commodity Spot Prices (Dollars per Short Ton)					
Week Ended	Central Appalachia 12,500 Btu, 1.2 SO2	Northern Appalachia 13,000 Btu, <3.0 SO2	Illinois Basin 11,800 Btu, 5.0 SO2	Powder River Basin 8,800 Btu, 0.8 SO2	Uinta Basin 11,700 Btu, 0.8 SO2
07-Nov-08	\$119.25	\$111.50	\$84.00	\$14.50	\$73.00
14-Nov-08	\$111.15	\$111.50	\$84.00	\$14.50	\$73.00
21-Nov-08	\$111.15	\$111.50	\$84.00	\$14.50	\$73.00
28-Nov-08	\$111.15	\$101.50	\$83.00	\$14.50	\$73.00
05-Dec-08	\$89.80	\$101.50	\$78.00	\$12.50	\$73.00
12-Dec-08	\$81.55	\$101.50	\$78.00	\$12.50	\$73.00
19-Dec-08	\$81.55	\$101.50	\$78.00	\$13.00	\$73.00

Source: Energy Information Administration (from Platts *Coal Outlook*, "Weekly Price Survey")

### EIA Electric Power Sector Coal Stocks



Source: Energy Information Administration, *Coal News and Markets Report*

<b>USGS Production of Selected Mineral Commodities</b>	<b>2008 Year to Date - 3rd Quarter</b>	<b>2007 Year to Date - 3rd Quarter</b>	<b>Percent Change</b>
Aluminum, secondary (000 Mt.)	729.0	708.0	3%
Cement (Mil. Mt.)	65.6	70.0	-6%
Gypsum (Mil. Mt.)	14.1	16.4	-14%
Iron Ore (Mil. Mt.)	40.9	38.6	6%
Phosphate rock (Mil. Mt.)	23.0	22.1	4%
Sand & gravel, construction (Mil. Mt.)	754.0	940.0	-20%
Soda ash (Mil. Mt.)	8.4	8.3	1%
Stone, crushed (Mil. Mt.)	1,020.0	1,220.0	-16%
Zinc (000 Mt.)	628.0	574.0	9%

Source: U.S. Geological Survey, Mineral Industry Surveys, *U.S. Production of Selected Mineral Commodities in the Third Quarter 2008, November 2008*

<b>AAR Rail Traffic for Selected Commodities - Carloadings (000)</b>	<b>2008 Year to Date - Dec. 13</b>	<b>2007 Year to Date - Dec. 13</b>	<b>Percent Change</b>
Agricultural Products	2,101	2,071	1.4%
Chemicals	1,798	1,833	-1.9%
Coal	1,219	6,959	-82.5%
Forest Products	639	717	-10.9%
Metallic Ores & Metals	1,144	1,242	-7.9%
Motor Vehicles & Equipment	795	1,006	-21.0%
Non-metallic Minerals & Products	1,656	1,799	-7.9%

Source: Association of American Rainroads, *Weekly Railroad Traffic*