
National Mining Association

Weekly Statistical Summary

December 28, 2007 Edition
(Data for Week Ending December 22, 2007)

Prepared by
National Mining Association



Suite 500 East, 101 Constitution Avenue, NW
Washington, DC, 20001
Phone (202) 463-2600
Visit us at <http://www.nma.org>

NMA Weekly Statistical Summary

Vol. 45, No. 51
Dated 12/28/07

PRODUCTION, CONSUMPTION & TRADE						
	Week Ended			Cumulative Jan 1 to		
	12/22/07	12/23/06	% Chng	12/22/07	12/23/06	% Chng
EIA Coal Production (000 Tons):						
Week Ended/Year to Date	22,032	23,180	-5.0%	1,122,611	1,138,816	-1.4%
52 Weeks Ended	1,144,766	1,161,871	-1.5%			
Month Ended -- November						
	November 07/06		% Chng	Jan - Nov 07/06		% Chng
	98,244	96,526	1.8%	1,056,389	1,066,687	-1.0%
MONTH ENDED AND CUMULATIVE NUMBERS ARE PRELIMINARY AND SUBJECT TO CHANGE						
DOC Bituminous Coal Trade (000 Tons)						
Exports:						
	October 07/06		% Chng	Jan - Oct 07/06		% Chng
Metallurgical	2,575	2,297	12.1%	26,432	22,796	16.0%
Steam	2,319	1,548	49.8%	20,155	17,602	14.5%
Imports:						
	2,896	3,214	-9.9%	30,646	30,527	0.4%
EEI Electric Output (Mil. Kwh)						
	Week Ended			Cumulative Jan 1 to		
	12/22/07	12/23/06	% Chng	12/22/07	12/23/06	% Chng
	80,631	74,830	7.8%	4,025,781	3,916,835	2.8%
AISI Raw Steel Output (000 Tons)						
	N/A	N/A	N/A	N/A	N/A	N/A
EIA U.S. PETROLEUM DATA						
4-Week Averages 000 Barrels per Day						
PETROLEUM SUPPLY:						
	Week Ending			Cumulative Daily Averages		
	12/21/07	12/21/06	% Chng	2007	2006	% Chng
Domestic Crude	5,119	5,149	-0.6	5,119	5,100	0.4
Net Imports (Incl. SPR)	9,563	9,624	-0.6	9,974	10,102	-1.3
SPR Stocks W/D or Added	-26	0	--	-19	-11	--
Other Stocks W/D or added	697	558	--	69	10	--
Natural Gas Liquids Prod.	2,393	2,434	-1.7	2,387	2,235	6.8

N/A - American Iron & Steel Production Unavailable Due To Holiday Schedule.



EIA Estimated Weekly U.S. Coal Production Overview (Thousand Short Tons)

Coal-Producing Region and State	Week Ended			Year To Date			52 Weeks Ended		
	12/22/2007	12/15/2007	12/23/2006	12/22/2007	12/22/2006	Percent Change	12/22/2007	12/23/2006	Percent Change
Alabama	365	377	358	18,806	18,757	0.3	19,069	19,104	-0.2
Alaska	22	29	31	1,294	1,400	-7.6	1,319	1,423	-7.3
Arizona	140	134	164	7,719	8,093	-4.6	7,842	8,295	-5.5
Arkansas	2	2	1	79	21	276.8	81	21	285.6
Colorado	707	726	730	35,792	35,585	0.6	36,452	36,279	0.5
Illinois	635	674	662	33,470	32,126	4.2	34,046	32,725	4.0
Indiana	708	709	711	35,113	34,493	1.8	35,716	35,199	1.5
Kansas	9	10	11	432	411	4.9	446	414	7.7
Kentucky Total	2,265	2,339	2,284	113,101	119,147	-5.1	115,028	121,368	-5.2
Eastern	1,669	1,720	1,738	84,822	92,368	-8.2	86,283	94,106	-8.3
Western	596	619	546	28,279	26,779	5.6	28,745	27,262	5.4
Louisiana	91	76	118	3,034	4,001	-24.2	3,135	4,093	-23.4
Maryland	41	74	54	2,546	5,008	-49.2	2,591	5,105	-49.2
Mississippi	72	37	79	3,540	3,708	-4.5	3,621	3,804	-4.8
Missouri	4	5	6	228	391	-41.5	232	403	-42.5
Montana	867	856	853	41,217	40,928	0.7	42,010	41,763	0.6
New Mexico	464	497	543	23,917	25,451	-6.0	24,368	26,025	-6.4
North Dakota	581	588	634	28,924	29,885	-3.2	29,450	30,455	-3.3
Ohio	458	448	447	21,712	22,343	-2.8	22,075	22,824	-3.3
Oklahoma	37	39	36	1,697	1,969	-13.8	1,726	2,005	-13.9
Pennsylvania Total	1,233	1,268	1,286	63,964	65,069	-1.7	65,053	66,361	-2.0
Anthracite	31	35	30	1,527	1,507	1.3	1,557	1,535	1.5
Bituminous	1,202	1,234	1,256	62,437	63,562	-1.8	63,495	64,826	-2.1
Tennessee	48	51	53	2,546	2,763	-7.9	2,586	2,824	-8.4
Texas	838	879	901	41,125	44,597	-7.8	41,959	45,650	-8.1
Utah	436	474	543	23,140	25,546	-9.4	23,599	26,047	-9.4
Virginia	487	561	568	26,360	29,391	-10.3	26,820	29,886	-10.3
Washington	0	0	0	0	2,580	-100.0	s	2,698	-100.0
West Virginia Total	2,957	3,001	2,914	151,174	149,813	0.9	153,638	152,665	0.6
Northern	871	910	776	43,511	41,728	4.3	44,159	42,518	3.9
Southern	2,086	2,092	2,138	107,663	108,085	-0.4	109,479	110,147	-0.6
Wyoming	8,565	8,340	9,190	441,680	435,340	1.5	451,904	444,432	1.7
Appalachian Total	7,258	7,499	7,419	371,930	385,513	-3.5	378,116	392,874	-3.8
Interior Total	2,992	3,049	3,071	146,997	148,497	-1.0	149,707	151,578	-1.2
Western Total	11,782	11,644	12,690	603,683	604,806	-0.2	616,943	617,419	-0.1
East of Miss. River	9,269	9,538	9,417	472,333	482,619	-2.1	480,244	491,864	-2.4
West of Miss. River	12,763	12,653	13,763	650,278	656,197	-0.9	664,522	670,007	-0.8
Bituminous and Lignite	22,001	22,157	23,150	1,121,083	1,137,309	-1.4	1,143,209	1,160,336	-1.5
Anthracite	31	35	30	1,527	1,507	1.3	1,557	1,535	1.5
U.S. Total	22,032	22,191	23,180	1,122,611	1,138,816	-1.4	1,144,766	1,161,871	-1.5
Railroad Cars Loaded	140,141	141,883	149,950	7,281,864	7,328,942	-0.6	7,408,279	7,456,227	-0.6

Source: Energy Information Administration



Volume 75 No. 51

OUTPUT FOR WEEK ENDED - Dec 22, 2007

Dec 27, 2007

The net available amount of electric energy distributed by the Total Electric Utility Industry+ for the week ended Saturday, Dec 22, 2007 was **80,631** gigawatthours (GWh), according to the Edison Electric Institute. This is equivalent to **180** on the weekly electric output index.

WEEKLY ELECTRIC OUTPUT BY GEOGRAPHIC DIVISION
(48 CONTIGUOUS STATES)

	Week Ended December 22		52 Weeks Ended December 22	
	GWh Output	% Increase Over Corresponding Week of 2006	GWh Output	% Increase Over Corresponding Period of 2006
New England	2,793	8.7	134,420	1.9
Mid-Atlantic	9,213	9.7	458,438	3.3
Central Industrial	14,545	7.3	721,876	3.8
West Central	7,051	5.1	351,910	2.2
Southeast	21,661	16.4	1,106,080	3.2
South Central	10,871	4.0	597,524	0.0
Rocky Mountain	5,660	5.3	276,915	6.4
Pacific Northwest	3,910	8.0	158,793	5.2
Pacific Southwest	4,927	-11.1	291,858	0.0
Total United States	80,631	7.8	4,097,813	2.8

WEEKLY ELECTRIC OUTPUT IN PREVIOUS WEEKS--GWh

Week Ended	2007	Week Ended	2006	% Inc. (07/06)	52 Weeks Ended	2007	% Inc. (07/06)
Dec 01	76,233	Dec 02	73,799	3.3	Dec 01	4,089,988	2.3
Dec 08	79,689	Dec 09	81,668	-2.4	Dec 08	4,088,009	2.2
Dec 15	79,780	Dec 16	75,777	5.3	Dec 15	4,092,013	2.5
Dec 22	80,631	Dec 23	74,830	7.8	Dec 22	4,097,813	2.8
Dec 22	4,025,781	Dec 23	3,916,835	2.8	YEAR TO DATE, FIRST 51 WEEKS		

WEEKLY ELECTRIC OUTPUT INDEX--TOTAL U.S.*
SEASONALLY ADJUSTED 1982 = 100

Week Ended	2007	Week Ended	2006	Week Ended	2005
Dec 01	193	Dec 02	188	Dec 03	176
Dec 08	184	Dec 09	192	Dec 10	186
Dec 15	180	Dec 16	173	Dec 17	185
Dec 22	180	Dec 23	170	Dec 24	191

* Excludes Alaska and Hawaii

+ Includes investor-owned companies, cooperatives and government-owned utilities.

Copyright © 2007 Edison Electric Institute. All rights reserved.

WEEKLY ELECTRIC OUTPUT BY GEOGRAPHIC DIVISION (48 CONTIGUOUS STATES)

	Week Ended			NMA CUMULATIVE JANUARY 1 to			52 Weeks Ended		
	22-Dec	23-Dec	% Increase Over Corresponding Week of 2006	22-Dec	23-Dec	% Increase Over Corresponding Week of 2006	22-Dec	23-Dec	% Increase Over Corresponding Week of 2006
	2007	2006		2007	2006		2007	2006	
	GWh Output	GWh Output		GWh Output	GWh Output		GWh Output	GWh Output	
New England	2,793	2,571	8.6%	131,968	129,373	2.0%	134,420	131,872	1.9%
Mid-Atlantic	9,213	8,398	9.7%	450,449	435,761	3.4%	458,438	443,990	3.3%
Central Industrial	14,545	13,559	7.3%	709,430	682,439	4.0%	721,876	695,264	3.8%
West Central	7,051	6,711	5.1%	345,848	338,089	2.3%	351,910	344,192	2.2%
Southeast	21,661	18,601	16.5%	1,087,002	1,053,015	3.2%	1,106,080	1,071,959	3.2%
South Central	10,871	10,452	4.0%	587,199	588,044	-0.1%	597,524	597,410	0.0%
Rocky Mountain	5,660	5,376	5.3%	272,005	255,714	6.4%	276,915	260,169	6.4%
Pacific Northwest	3,910	3,619	8.0%	155,190	147,770	5.0%	158,793	151,000	5.2%
Pacific Southwest	<u>4,927</u>	<u>5,543</u>	-11.1%	<u>286,689</u>	<u>286,632</u>	0.0%	<u>291,858</u>	<u>291,759</u>	0.0%
Total United States *	80,631	74,830	7.8%	4,025,780	3,916,837	2.8%	4,097,814	3,987,615	2.8%

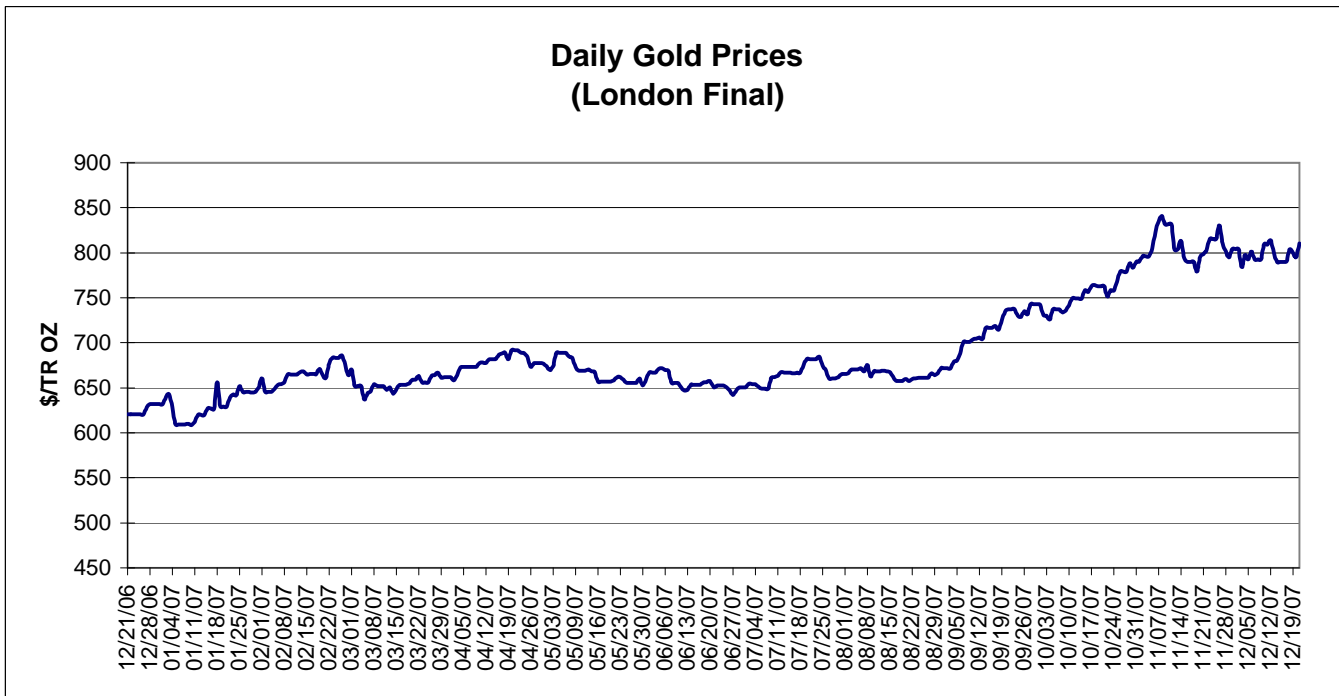
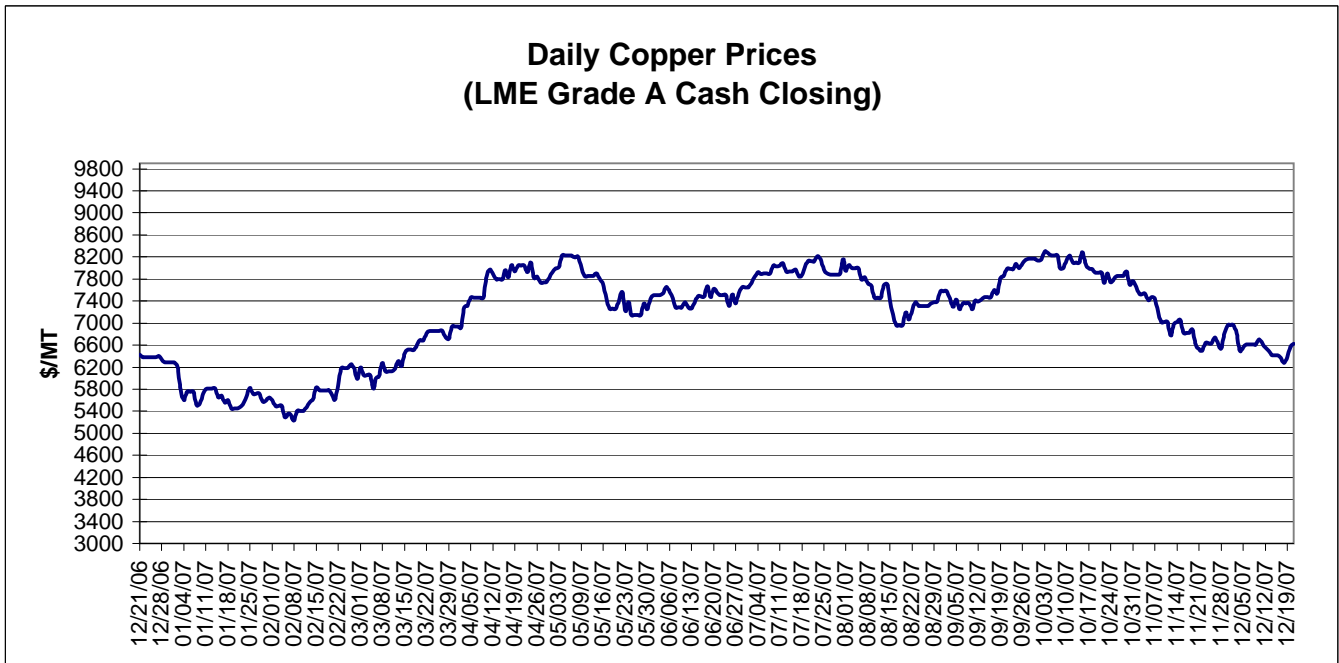
Notes: EEI output data are an estimate of electricity load made available for distribution derived as weekly net generation + purchases from non-utilities + net imports - exports - sales for resale. It is not meant to be a measure of electricity generation for the U.S. EEI survey data represent the majority of national distribution (large utilities, large government power projects, some independent and large municipal power projects). The remaining segment of the industry (smaller producers) is estimated. Non-utility generation is captured via direct sales to utilities.

* Excludes Alaska and Hawaii

** Less than one-tenth of one percent

SOURCE: Edison Electric Institute (EEI), *Weekly Electric Output Report*.

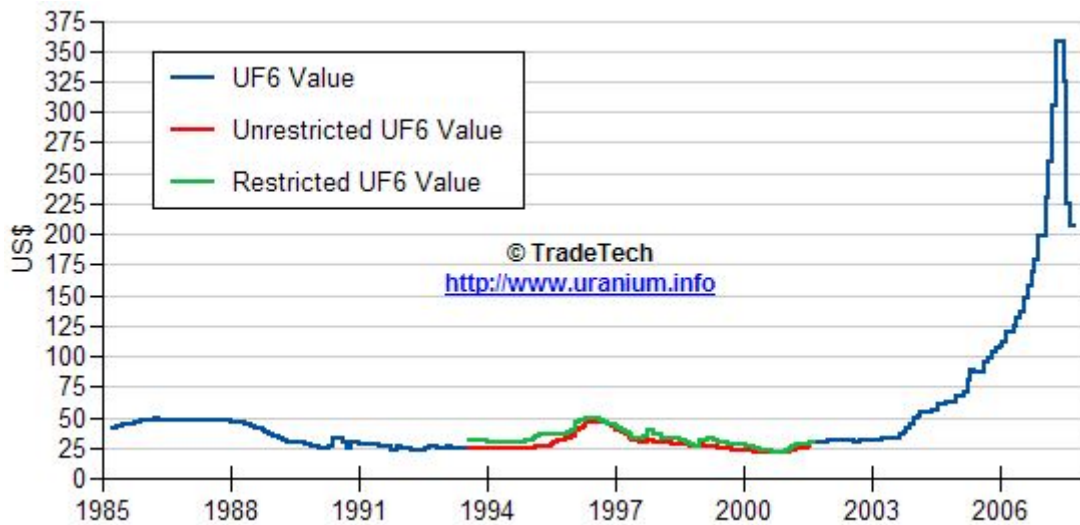
Estimated Weekly Raw Steel Production Figures are Unavailable This Week Due to Holiday Schedule.



Data reflect closings on weekends and holidays.

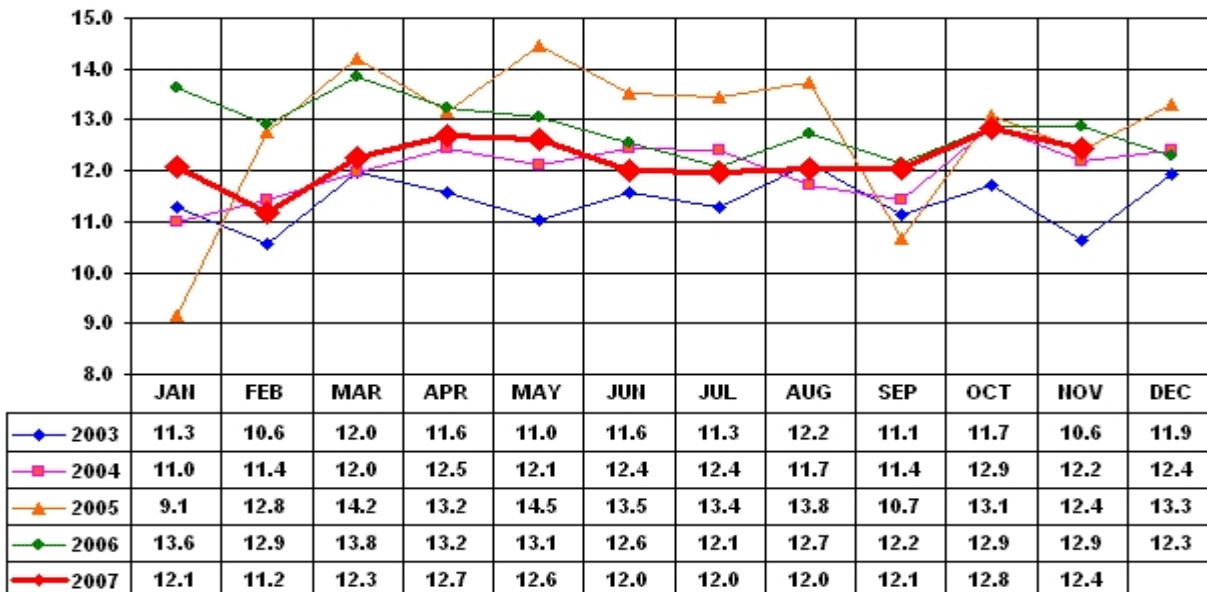
Source: Platts Metals Week

Trade Tech's Uranium (UF6) Monthly Spot Prices (US\$/kg as UF6)



Source: Trade Tech, Uranium Info Website – <http://www.uranium.info>

Coal and Coke Monthly Tonnage Indicator for Internal U.S. Waterways



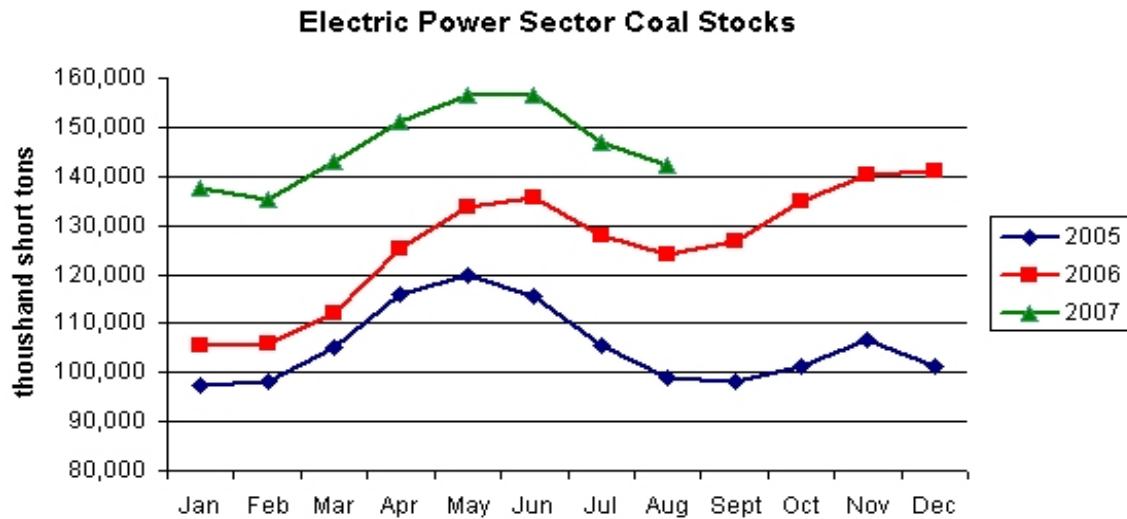
Source: U.S. Army Corps of engineers, Waterborne Commerce Statistics Center

EIA Weekly Spot Coal Prices

The following average spot coal prices appear in the graphic below, for the previous and most recent weeks:

Week Ended	Central Appalachia 12,500 Btu, 1.2 SO2	Northern Appalachia 13,000 Btu, <3.0 SO2	Illinois Basin 11,800 Btu, 5.0 SO2	Powder River Basin 8,800 Btu, 0.8 SO2	Uinta Basin 11,700 Btu, 0.8 SO2
23-Nov-07	\$52.95	\$55.25	\$33.50	\$11.05	\$24.00
30-Nov-07	\$56.80	\$55.25	\$33.50	\$11.15	\$24.00
07-Dec-07	\$57.70	\$55.25	\$33.50	\$11.50	\$24.00
14-Dec-07	\$57.70	\$55.25	\$33.50	\$11.50	\$24.00
21-Dec-07	\$57.70	\$55.25	\$33.50	\$11.50	\$24.00

Source: Energy Information Administration (from Platts *Coal Outlook*, "Weekly Price Survey")



Source: Energy Information Administration