

---

National Mining Association

# Weekly Statistical Summary

December 5, 2008 Edition  
(Data for Week Ending November 29, 2008)

Prepared by  
National Mining Association



Suite 500 East, 101 Constitution Avenue, NW  
Washington, DC, 20001  
Phone (202) 463-2600  
Visit us at <http://www.nma.org>

# NMA Weekly Statistical Summary

Vol. 46, No. 48  
Dated 12/05/08

PRODUCTION, CONSUMPTION & TRADE						
	Week Ended			* Cumulative Jan 1 to		
	11/29/08	12/01/07	% Chng	11/29/08	11/29/07	% Chng
<b>EIA Coal Production (000 Tons):</b>						
Week Ended/Year to Date	22,106	23,273	-5.0%	1,067,318	1,049,571	1.7%
52 Weeks Ended	1,158,637	1,145,862	1.1%			
* Due to leap year, 2008 cumulative reflects one extra day of tonnage.						
	October 08/07		% Chng	Jan - Oct 08/07		% Chng
<b>Month Ended -- October</b>	103,886	98,825	5.1%	974,150	956,588	1.8%
MONTH ENDED AND CUMULATIVE NUMBERS ARE PRELIMINARY AND SUBJECT TO CHANGE						
DOC Bituminous Coal Trade (000 Tons)						
	Sep 08/07		% Chng	Jan - Sep 08/07		% Chng
<b>Exports:</b>						
Metallurgical	4,744	2,731	73.7%	32,233	23,856	35.1%
Steam	3,850	2,139	80.0%	26,540	17,836	48.8%
<b>Imports:</b>	3,144	3,716	-15.4%	22,335	24,280	-8.0%
	Week Ended			* Cumulative Jan 1 to		
	11/29/08	12/01/07	% Chng	11/29/08	12/01/07	% Chng
<b>EEl Electric Output (Mil. Kwh)</b>	72,608	76,233	-4.8%	3,748,235	3,785,680	-1.0%
<b>AISI Raw Steel Output (000 Tons)</b>	1,197	2,110	-43.3%	95,947	98,900	-3.0%
EIA U.S. PETROLEUM DATA						
4-Week Averages						
000 Barrels per Day						
	Week Ending			Cumulative Daily Averages		
	11/28/08	11/28/07	% Chng	2008	2007	% Chng
<b>PETROLEUM SUPPLY:</b>						
Domestic Crude	4,988	5,018	-0.6	4,951	5,065	-2.3
Net Imports (Incl. SPR)	9,932	9,956	-0.2	9,786	10,014	-2.3
SPR Stocks W/D or Added	0	-46	--	-15	-20	--
Other Stocks W/D or added	-302	252	--	-104	36	--
Natural Gas Liquids Prod.	2,394	2,661	-10.0	2,270	2,405	-5.6



**NMA**

THE AMERICAN RESOURCE National Mining Association Web Site: [http:// www.nma.org](http://www.nma.org)

## EIA Estimated Weekly U.S. Coal Production Overview (Thousand Short Tons)

Coal-Producing Region and State	Week Ended			Year to Date			52 Weeks Ended		
	11/29/2008	11/22/2008	12/1/2007	11/29/2008	11/29/2007	Percent Change	11/29/2008	12/1/2007	Percent Change
Alabama	374	404	396	18,916	17,890	5.7	20,467	19,281	6.1
Alaska	25	27	30	1,283	1,213	5.7	1,387	1,335	3.9
Arizona	146	157	145	7,011	7,365	-4.8	7,600	7,997	-5.0
Arkansas	1	1	2	54	75	-28.2	61	79	-21.9
Colorado	646	697	718	32,983	33,342	-1.1	35,836	36,325	-1.3
Illinois	561	606	539	28,177	30,638	-8.0	30,275	33,268	-9.0
Indiana	677	731	682	32,677	32,133	1.7	35,397	34,963	1.2
Kansas	5	6	8	277	388	-28.7	308	436	-29.5
<b>Kentucky Total</b>	<b>2,077</b>	<b>2,243</b>	<b>2,277</b>	<b>109,390</b>	<b>106,086</b>	<b>3.1</b>	<b>118,346</b>	<b>115,175</b>	<b>2.8</b>
Eastern	1,549	1,673	1,708	82,370	80,185	2.7	89,090	87,081	2.3
Western	528	570	569	27,020	25,902	4.3	29,256	28,094	4.1
Louisiana	90	101	96	3,662	2,739	33.7	4,025	3,176	26.7
Maryland	52	57	51	2,207	2,132	3.5	2,365	2,346	0.8
Mississippi	0	0	54	2,667	3,277	-18.6	2,922	3,584	-18.5
Missouri	6	6	5	215	216	-0.7	234	239	-2.4
Montana	830	896	961	39,422	39,228	0.5	43,322	42,774	1.3
New Mexico	574	620	505	23,677	22,399	5.7	25,621	24,545	4.4
North Dakota	550	594	600	26,578	27,120	-2.0	28,944	29,619	-2.3
Ohio	451	487	471	22,812	20,568	10.9	24,715	22,341	10.6
Oklahoma	33	36	32	1,425	1,518	-6.1	1,548	1,658	-6.6
<b>Pennsylvania Total</b>	<b>1,154</b>	<b>1,246</b>	<b>1,267</b>	<b>60,264</b>	<b>59,946</b>	<b>0.5</b>	<b>65,243</b>	<b>65,056</b>	<b>0.3</b>
Anthracite	20	21	34	1,296	1,434	-9.6	1,424	1,559	-8.7
Bituminous	1,134	1,225	1,233	58,968	58,511	0.8	63,819	63,497	0.5
Tennessee	49	53	55	2,330	2,429	-4.1	2,544	2,636	-3.5
Texas	704	761	879	34,981	38,246	-8.5	38,439	41,958	-8.4
Utah	437	471	535	22,011	22,136	-0.6	24,068	24,296	-0.9
Virginia	485	524	436	22,542	23,739	-5.0	24,169	25,955	-6.9
Washington	--	--	--	--	--	--	0	s	-100.0
<b>West Virginia Total</b>	<b>2,923</b>	<b>3,157</b>	<b>2,980</b>	<b>147,523</b>	<b>141,034</b>	<b>4.6</b>	<b>159,356</b>	<b>152,666</b>	<b>4.4</b>
Northern	760	820	786	38,287	38,963	-1.7	41,373	42,049	-1.6
Southern	2,164	2,337	2,194	109,235	102,071	7.0	117,983	110,617	6.7
Wyoming	9,257	9,495	9,548	424,237	413,715	2.5	461,446	454,154	1.6
<b>Appalachian Total</b>	<b>7,038</b>	<b>7,600</b>	<b>7,365</b>	<b>358,964</b>	<b>347,923</b>	<b>3.2</b>	<b>387,949</b>	<b>377,363</b>	<b>2.8</b>
<b>Interior Total</b>	<b>2,605</b>	<b>2,816</b>	<b>2,866</b>	<b>131,154</b>	<b>135,130</b>	<b>-2.9</b>	<b>142,464</b>	<b>147,454</b>	<b>-3.4</b>
<b>Western Total</b>	<b>12,464</b>	<b>12,958</b>	<b>13,041</b>	<b>577,200</b>	<b>566,517</b>	<b>1.9</b>	<b>628,223</b>	<b>621,045</b>	<b>1.2</b>
<b>East of Miss. River</b>	<b>8,803</b>	<b>9,507</b>	<b>9,209</b>	<b>449,505</b>	<b>439,872</b>	<b>2.2</b>	<b>485,799</b>	<b>477,271</b>	<b>1.8</b>
<b>West of Miss. River</b>	<b>13,303</b>	<b>13,868</b>	<b>14,064</b>	<b>617,813</b>	<b>609,699</b>	<b>1.3</b>	<b>672,838</b>	<b>668,590</b>	<b>0.6</b>
Bituminous and Lignite	22,087	23,354	23,239	1,066,022	1,048,136	1.7	1,157,213	1,144,303	1.1
Anthracite	20	21	34	1,296	1,434	-9.6	1,424	1,559	-8.7
<b>U.S. Total</b>	<b>22,106</b>	<b>23,375</b>	<b>23,273</b>	<b>1,067,318</b>	<b>1,049,571</b>	<b>1.7</b>	<b>1,158,637</b>	<b>1,145,862</b>	<b>1.1</b>
Railroad Cars Loaded	142,571	154,638	154,454	7,092,719	6,853,665	3.5	7,643,086	7,418,641	3.0

Source: Energy Information Administration



Volume 76 No. 48

**OUTPUT FOR WEEK ENDED - Nov 29, 2008**

Dec 03, 2008

The net available amount of electric energy distributed by the Total Electric Utility Industry\* for the week ended Saturday, **Nov 29, 2008** was **72,608** gigawatthours (GWh), according to the Edison Electric Institute. This is equivalent to **182** on the weekly electric output index.

**WEEKLY ELECTRIC OUTPUT BY GEOGRAPHIC DIVISION**  
(48 CONTIGUOUS STATES)

	Week Ended November 29		52 Weeks Ended November 29	
	GWh Output	% Increase Over Corresponding Week of 2007	GWh Output	% Increase Over Corresponding Period of 2007
New England	2,423	-4.9	131,315	-1.9
Mid-Atlantic	8,387	-1.3	451,405	-1.1
Central Industrial	13,189	-5.6	708,043	-1.7
West Central	6,099	-7.8	345,354	-1.7
Southeast	20,083	-3.4	1,090,522	-1.2
South Central	9,186	-10.0	601,416	0.7
Rocky Mountain	5,008	-5.2	276,461	0.3
Pacific Northwest	3,402	-6.9	167,178	5.6
Pacific Southwest	4,831	3.2	291,474	-0.3
Total United States	72,608	-4.8	4,063,168	-0.7

**WEEKLY ELECTRIC OUTPUT IN PREVIOUS WEEKS--GWh**

Week Ended	2008	Week Ended	2007	% Inc. (08/07)	52 Weeks Ended	2008	% Inc. (08/07)
Nov 08	70,004	Nov 10	72,953	-4.0	Nov 08	4,063,390	-0.6
Nov 15	71,948	Nov 17	73,355	-1.9	Nov 15	4,061,983	-0.6
Nov 22	76,406	Nov 24	71,597	6.7	Nov 22	4,066,792	-0.5
Nov 29	72,608	Dec 01	76,233	-4.8	Nov 29	4,063,168	-0.7
<b>Nov 29</b>	<b>3,748,235</b>	<b>Dec 01</b>	<b>3,785,680</b>	<b>-1.0</b>	<b>YEAR TO DATE, FIRST 48 WEEKS</b>		

**WEEKLY ELECTRIC OUTPUT INDEX--TOTAL U.S.\***  
**SEASONALLY ADJUSTED 1982 = 100**

Week Ended	2008	Week Ended	2007	Week Ended	2006
Nov 08	177	Nov 10	185	Nov 11	182
Nov 15	180	Nov 17	184	Nov 18	181
Nov 22	191	Nov 24	179	Nov 25	179
Nov 29	182	Dec 01	193	Dec 02	188

\* Excludes Alaska and Hawaii.

+ Includes investor-owned companies, cooperatives and government-owned utilities.

Copyright © 2008 Edison Electric Institute. All rights reserved.

**WEEKLY ELECTRIC OUTPUT BY GEOGRAPHIC DIVISION  
(48 CONTIGUOUS STATES)**

	Week Ended			NMA CUMULATIVE JANUARY WEEK ONE TO			52 Weeks Ended		
	29-Nov 2008 GWh Output	1-Dec 2007 GWh Output	% Increase Over Corresponding Week of 2007	29-Nov 2008 GWh Output	1-Dec 2007 GWh Output	% Increase Over Corresponding Week of 2007	29-Nov 2008 GWh Output	1-Dec 2007 GWh Output	% Increase Over Corresponding Week of 2007
<b>New England</b>	2,423	2,548	-4.9%	<b>120,540</b>	<b>123,671</b>	<b>-2.5%</b>	131,315	133,888	-1.9%
<b>Mid-Atlantic</b>	8,387	8,500	-1.3%	<b>415,495</b>	<b>422,756</b>	<b>-1.7%</b>	451,405	456,554	-1.1%
<b>Central Industrial</b>	13,189	13,966	-5.6%	<b>651,303</b>	<b>665,397</b>	<b>-2.1%</b>	708,043	720,161	-1.7%
<b>West Central</b>	6,099	6,618	-7.8%	<b>317,871</b>	<b>324,731</b>	<b>-2.1%</b>	345,354	351,210	-1.7%
<b>Southeast</b>	20,083	20,780	-3.4%	<b>1,007,166</b>	<b>1,023,302</b>	<b>-1.6%</b>	1,090,522	1,104,313	-1.2%
<b>South Central</b>	9,186	10,202	-10.0%	<b>558,741</b>	<b>555,462</b>	<b>0.6%</b>	601,416	597,517	0.7%
<b>Rocky Mountain</b>	5,008	5,283	-5.2%	<b>254,312</b>	<b>255,280</b>	<b>-0.4%</b>	276,461	275,608	0.3%
<b>Pacific Northwest</b>	3,402	3,654	-6.9%	<b>152,125</b>	<b>144,027</b>	<b>5.6%</b>	167,178	158,288	5.6%
<b>Pacific Southwest</b>	4,831	4,682	3.2%	<b>270,686</b>	<b>271,054</b>	<b>-0.1%</b>	291,474	292,449	-0.3%
<b>Total United States *</b>	72,608	76,233	-4.8%	<b>3,748,239</b>	<b>3,785,680</b>	<b>-1.0%</b>	4,063,168	4,089,988	-0.7%

Notes: EEI output data are an estimate of electricity load made available for distribution derived as weekly net generation + purchases from non-utilities + net imports - exports - sales for resale. It is not meant to be a measure of electricity generation for the U.S. EEI survey data represent the majority of national distribution (large utilities, large government power projects, some independent and large municipal power projects). The remaining segment of the industry (smaller producers) is estimated. Non-utility generation is captured via direct sales to utilities.

\* Excludes Alaska and Hawaii

\*\* Less than one-tenth of one percent

SOURCE: Edison Electric Institute (EEI), *Weekly Electric Output Report*.

AMERICAN IRON AND STEEL INSTITUTE  
 1140 Connecticut Avenue, Suite 705  
 Washington, D.C. 20036

December 1, 2008

**ESTIMATED WEEKLY RAW STEEL\* PRODUCTION**

Period	Thousand Net Tons	Percent Change from Previous Period	Percent Capability Utilization**	Production by District	
				Week Ending	
				Nov. 29	Nov. 22
<b>Week Ending</b>					
November 29, 2008	1,197	-11.2	50.2	93	107
November 29, 2007	2,110	-43.3	88.5	115	140
November 22, 2008	1,348	-3.8	56.5	46	44
				71	68
				293	302
				197	202
				329	425
				53	60
				1,197	1,348
<b>Year-to-Date+</b>					
November 29, 2008	94,947	-3.0	84.3		
November 29, 2007	98,900	-	86.6		

\*Raw steel production tonnage included in this report is estimated based on a sampling of steel producers. Therefore, this report should be used primarily to assess production trends. The AISI production report "AIS 7," produced monthly and available by subscription, provides a more accurate summary of steel production based on data supplied by companies representing approximately 75% of U.S. production capacity.  
 + Includes revisions for previous months

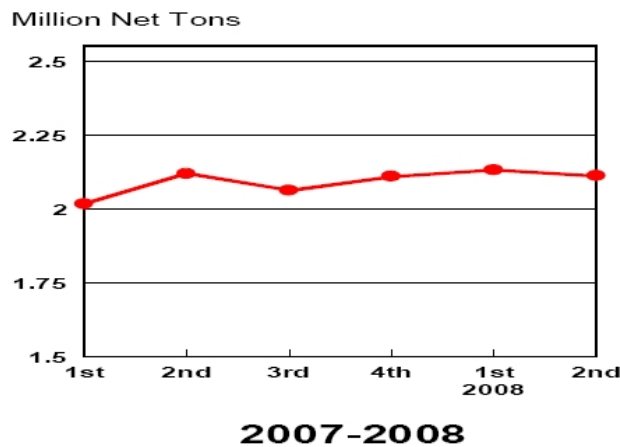
NOTE: Capability for the Third Quarter 2008 is approximately 31.4 million net tons vs 30.1 million net tons for the same period last year, and 31.0 million tons for the second quarter of 2008.

Capability -	2004 approx.	2.2 million tons/week
	2005	2.3
	2006	2.4
	2007	2.4
	2008	2.4

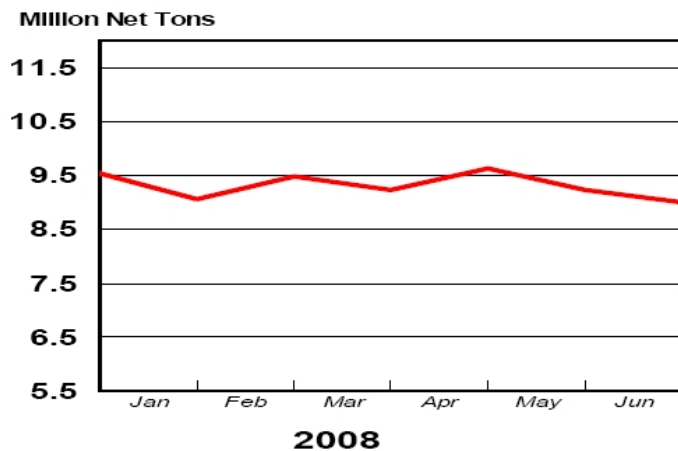
\*Steel in the first solid state after melting suitable for further processing or sale, including ingots, steel for castings and strand or pressure cast blooms, slabs, or other product forms.

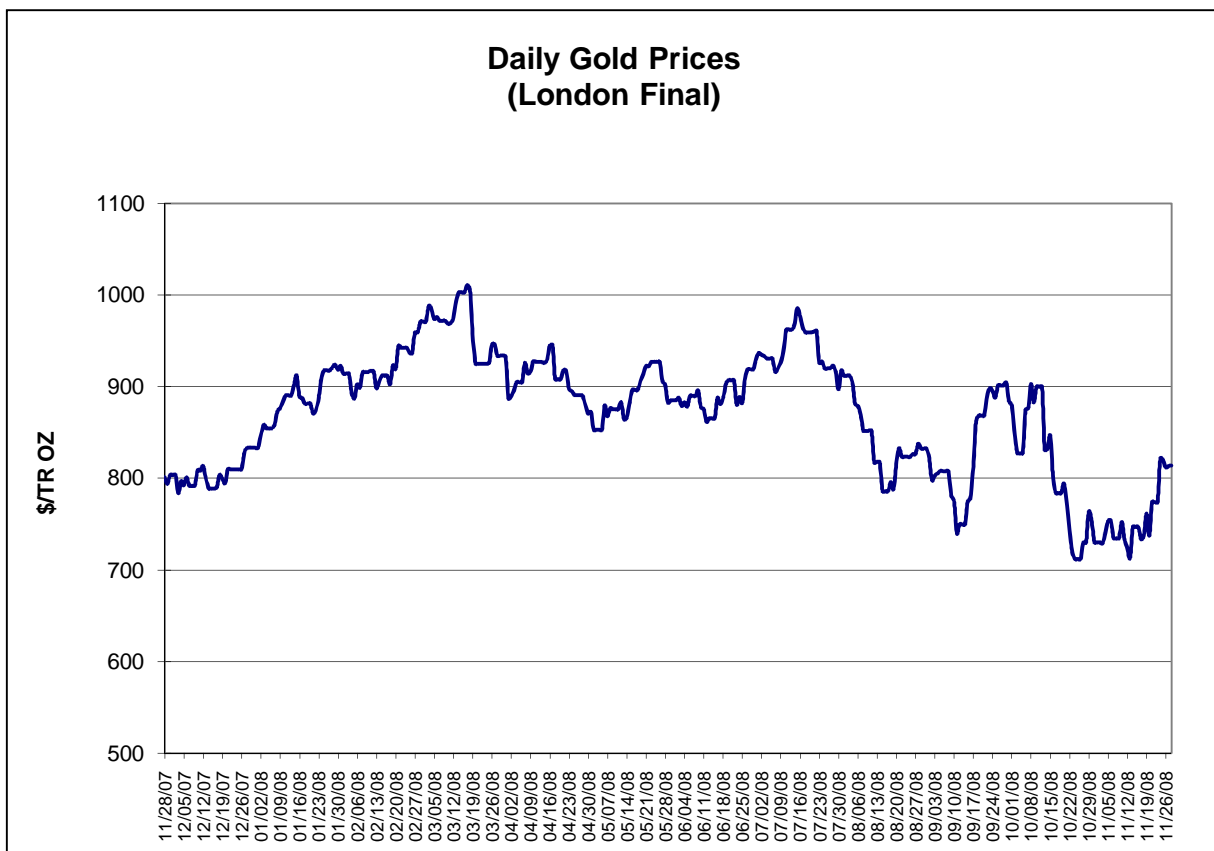
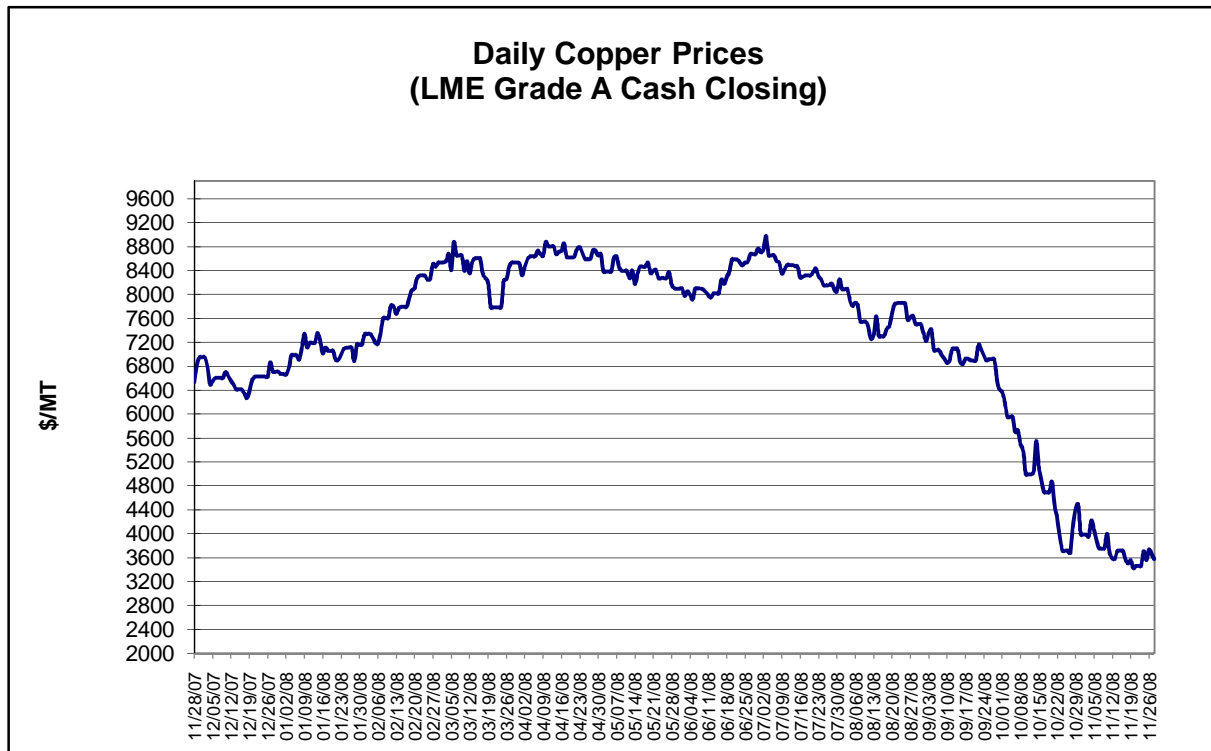
\*\* Based on tonnage capability to produce raw steel for a sustained full order book.

**Average Weekly Raw Steel Production**



**Monthly Raw Steel Production**

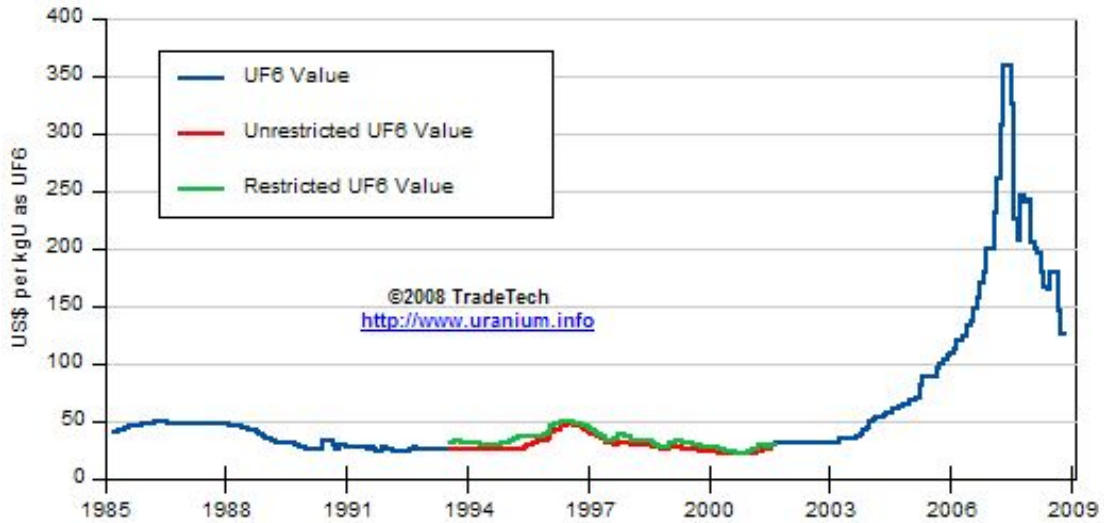




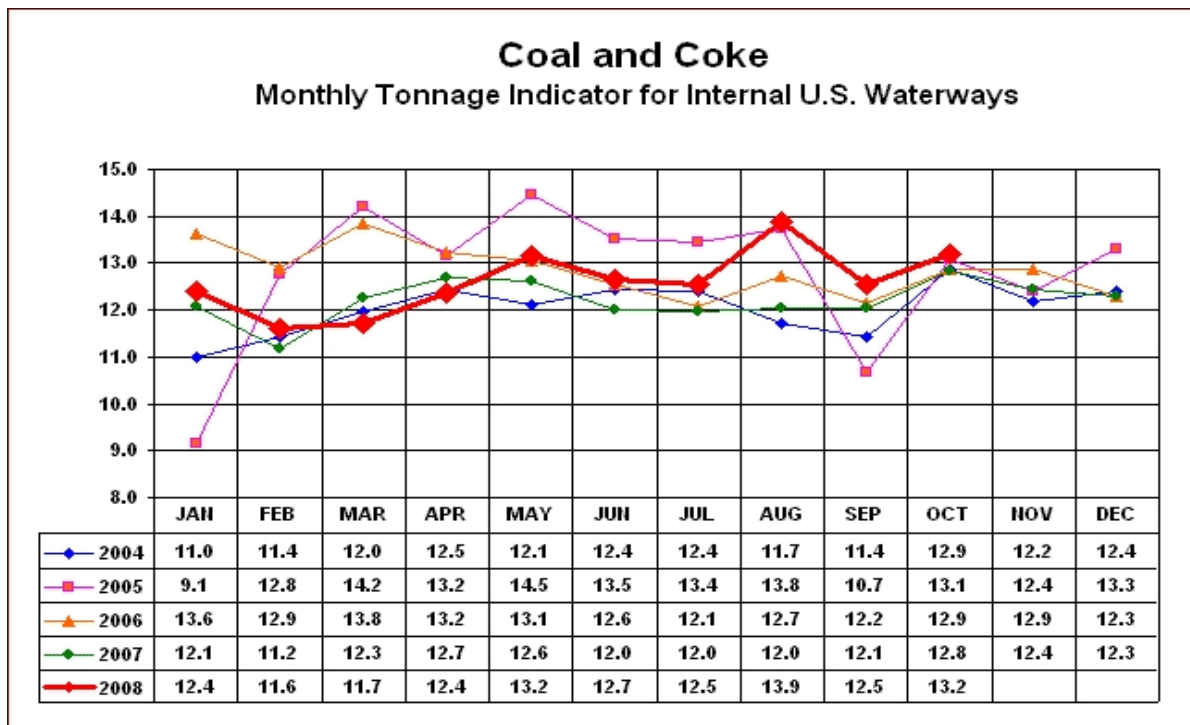
Data reflect closings on weekends and holidays.

Source: Platts Metals Week

### Trade Tech's Uranium (UF6) Monthly Spot Prices (US\$/kg as UF6)



Source: Trade Tech, Uranium Info Website – <http://www.uranium.info>

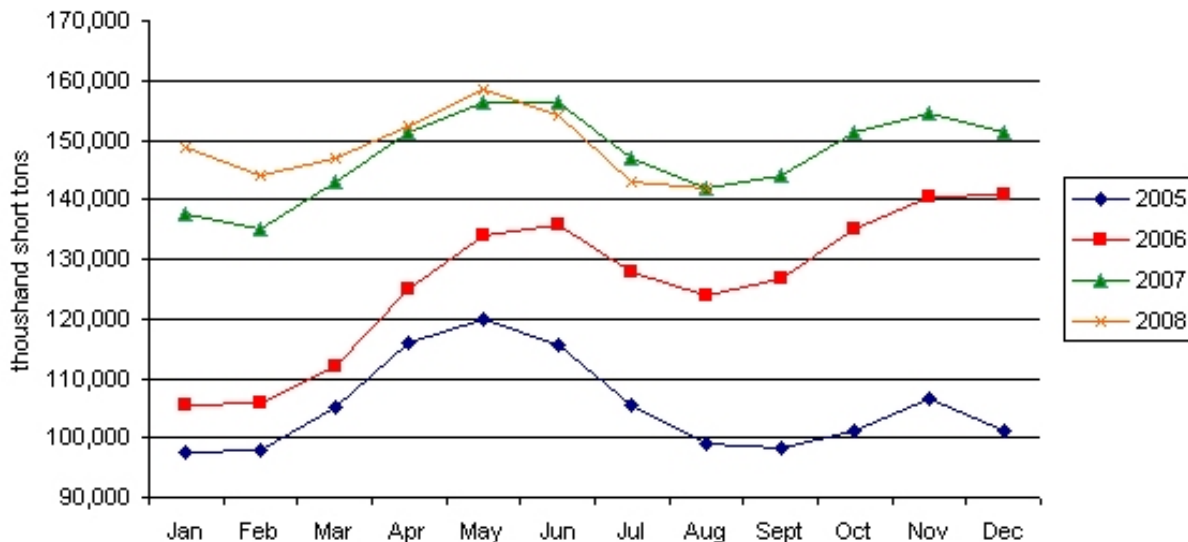


Source: U.S. Army Corps of Engineers, Waterborne Commerce Statistics Center

Average Weekly Coal Commodity Spot Prices (Dollars per Short Ton)					
Week Ended	Central Appalachia 12,500 Btu, 1.2 SO2	Northern Appalachia 13,000 Btu, <3.0 SO2	Illinois Basin 11,800 Btu, 5.0 SO2	Powder River Basin 8,800 Btu, 0.8 SO2	Uinta Basin 11,700 Btu, 0.8 SO2
17-Oct-08	\$133.00	\$138.00	\$84.00	\$14.50	\$61.00
24-Oct-08	\$119.25	\$123.00	\$84.00	\$14.50	\$61.00
31-Oct-08	\$119.25	\$111.50	\$84.00	\$14.50	\$73.00
07-Nov-08	\$119.25	\$111.50	\$84.00	\$14.50	\$73.00
14-Nov-08	\$111.15	\$111.50	\$84.00	\$14.50	\$73.00
21-Nov-08	\$111.15	\$111.50	\$84.00	\$14.50	\$73.00
1-Dec-08	\$111.15	\$111.50	\$83.00	\$14.50	\$73.00

Source: Energy Information Administration (from Platts *Coal Outlook*, "Weekly Price Survey")

### EIA Electric Power Sector Coal Stocks



Source: Energy Information Administration

<b>USGS Production of Selected Mineral Commodities</b>	<b>2008 Year to Date - 3rd Quarter</b>	<b>2007 Year to Date - 3rd Quarter</b>	<b>Percent Change</b>
Aluminum, secondary (000 Mt.)	729.0	708.0	3%
Cement (Mil. Mt.)	65.6	70.0	-6%
Gypsum (Mil. Mt.)	14.1	16.4	-14%
Iron Ore (Mil. Mt.)	40.9	38.6	6%
Phosphate rock (Mil. Mt.)	23.0	22.1	4%
Sand & gravel, construction (Mil. Mt.)	754.0	940.0	-20%
Soda ash (Mil. Mt.)	8.4	8.3	1%
Stone, crushed (Mil. Mt.)	1,020.0	1,220.0	-16%
Zinc (000 Mt.)	628.0	574.0	9%

Source: U.S. Geological Survey, Mineral Industry Surveys, *U.S. Production of Selected Mineral Commodities in the Third Quarter 2008, November 2008*