
National Mining Association

Weekly Statistical Summary

January 25, 2008 Edition
(Data for Week Ending January 19, 2008)

Prepared by
National Mining Association



Suite 500 East, 101 Constitution Avenue, NW
Washington, DC, 20001
Phone (202) 463-2600
Visit us at <http://www.nma.org>

NMA Weekly Statistical Summary

Vol. 46, No. 03
Dated 01/25/08

PRODUCTION, CONSUMPTION & TRADE						
	Week Ended			Cumulative Jan 1 to		
	01/19/08	01/20/07	% Chng	01/19/08	01/20/07	% Chng
EIA Coal Production (000 Tons):						
Week Ended/Year to Date	22,811	22,137	3.0%	61,283	61,967	-1.1%
52 Weeks Ended	1,145,838	1,160,651	-1.3%			
Month Ended -- December						
	December 07/06		% Chng	Jan - Dec 07/06		% Chng
	94,340	96,063	-1.8%	1,148,168	1,162,750	-1.3%
MONTH ENDED AND CUMULATIVE NUMBERS ARE PRELIMINARY AND SUBJECT TO CHANGE						
DOC Bituminous Coal Trade (000 Tons)						
Exports:						
	November 07/06		% Chng	Jan - Nov 07/06		% Chng
Metallurgical	3,096	2,556	21.1%	29,528	25,353	16.5%
Steam	3,119	2,207	41.3%	23,273	19,810	17.5%
Imports:						
	2,889	2,630	9.8%	33,535	33,156	1.1%
Week Ended						
	01/19/08	01/20/07	% Chng	Cumulative Jan 1 to		
				01/19/08	01/20/07	% Chng
EEl Electric Output (Mil. Kwh)	81,351	81,592	-0.3%	236,639	231,030	2.4%
AISI Raw Steel Output (000 Tons)	2,084	1,877	11.0%	6,161	5,631	9.4%
EIA U.S. PETROLEUM DATA						
4-Week Averages 000 Barrels per Day						
Week Ending						
	01/18/08	01/18/07	% Chng	Cumulative Daily Averages		
				2008	2007	% Chng
PETROLEUM SUPPLY:						
Domestic Crude	5,046	5,184	-2.7	--	--	--
Net Imports (Incl. SPR)	10,065	9,926	1.4	--	--	--
SPR Stocks W/D or Added	-95	0	--	--	--	--
Other Stocks W/D or added	151	58	--	--	--	--
Natural Gas Liquids Prod.	2,427	2,314	4.9	--	--	--

Cumulative daily petroleum averages will be shown beginning with week ending April 4, 2008 data.



NMA
THE AMERICAN RESOURCE

National Mining Association Web Site: [http:// www.nma.org](http://www.nma.org)

EIA Estimated Weekly U.S. Coal Production Overview (Thousand Short Tons)

Coal-Producing Region and State	Week Ended			Year to Date		Percent Change	52 Weeks Ended		Percent Change
	1/19/2008	1/12/2008	1/20/2007	1/19/2008	1/19/2007		1/19/2008	1/20/2007	
Alabama	393	394	397	1,039	1,153	-9.9	19,068	18,919	0.8
Alaska	25	25	35	64	102	-37.1	1,279	1,449	-11.7
Arizona	123	123	157	341	457	-25.4	7,749	8,192	-5.4
Arkansas	2	2	1	6	4	46.2	83	26	219.9
Colorado	714	715	618	1,876	1,675	12.0	36,702	36,460	0.7
Illinois	687	687	737	1,787	2,088	-14.5	33,821	32,982	2.5
Indiana	722	722	697	1,918	1,987	-3.5	35,770	35,110	1.9
Kansas	10	10	8	26	24	8.0	443	437	1.3
Kentucky Total	2,315	2,318	2,275	6,132	6,526	-6.0	115,062	120,360	-4.4
Eastern	1,690	1,692	1,694	4,492	4,885	-8.1	86,172	93,075	-7.4
Western	625	625	581	1,641	1,641	*	28,890	27,285	5.9
Louisiana	88	92	73	259	213	22.0	3,179	4,075	-22.0
Maryland	41	41	46	109	133	-17.9	2,565	4,865	-47.3
Mississippi	68	68	57	190	166	14.2	3,649	3,735	-2.3
Missouri	4	4	5	12	13	-11.1	231	373	-38.0
Montana	845	846	779	2,235	2,092	6.9	42,219	41,787	1.0
New Mexico	464	465	424	1,242	1,219	1.9	24,419	25,801	-5.4
North Dakota	584	585	596	1,570	1,737	-9.6	29,357	30,356	-3.3
Ohio	471	472	432	1,251	1,231	1.6	22,199	22,558	-1.6
Oklahoma	38	38	32	100	93	7.6	1,742	1,961	-11.1
Pennsylvania Total	1,311	1,313	1,345	3,456	3,879	-10.9	64,815	66,194	-2.1
Anthracite	35	35	31	91	90	1.4	1,561	1,535	1.7
Bituminous	1,276	1,278	1,314	3,365	3,789	-11.2	63,254	64,659	-2.2
Tennessee	48	48	55	128	160	-19.8	2,565	2,790	-8.0
Texas	822	823	766	2,174	2,046	6.3	42,072	45,252	-7.0
Utah	453	453	470	1,192	1,347	-11.6	23,441	25,800	-9.1
Virginia	511	511	559	1,343	1,590	-15.5	26,612	29,657	-10.3
Washington	0	0	0	0	0	*	0	2,402	-100.0
West Virginia Total	3,069	3,073	3,102	8,100	8,843	-8.4	153,473	152,227	0.8
Northern	970	971	925	2,507	2,643	-5.1	44,286	42,443	4.3
Southern	2,099	2,102	2,177	5,592	6,201	-9.8	109,187	109,784	-0.5
Wyoming	9,003	8,799	8,474	24,734	23,187	6.7	453,324	446,885	1.4
Appalachian Total	7,536	7,545	7,630	19,918	21,875	-8.9	377,470	390,284	-3.3
Interior Total	3,065	3,072	2,956	8,111	8,275	-2.0	149,879	151,236	-0.9
Western Total	12,211	12,011	11,551	33,253	31,816	4.5	618,490	619,131	-0.1
East of Miss. River	9,637	9,648	9,701	25,453	27,758	-8.3	479,599	489,396	-2.0
West of Miss. River	13,174	12,979	12,436	35,830	34,209	4.7	666,239	671,255	-0.7
Bituminous and Lignite	22,776	22,592	22,106	61,191	61,876	-1.1	1,144,277	1,159,116	-1.3
Anthracite	35	35	31	91	90	1.4	1,561	1,535	1.7
U.S. Total	22,811	22,627	22,137	61,283	61,967	-1.1	1,145,838	1,160,651	-1.3
Railroad Cars Loaded	145,761	146,973	140,031	427,045	414,317	3.1	7,416,760	7,445,280	-0.4

Source: Energy Information Administration



WEEKLY ELECTRIC OUTPUT

Essential Energy Information from EEI's Statistics Department

Volume 76 No. 3

OUTPUT FOR WEEK ENDED - Jan 19, 2008

Jan 23, 2008

The net available amount of electric energy distributed by the Total Electric Utility Industry+ for the week ended Saturday, Jan 19, 2008 was 81,351 gigawatthours (GWh), according to the Edison Electric Institute. This is equivalent to 183 on the weekly electric output index.

WEEKLY ELECTRIC OUTPUT BY GEOGRAPHIC DIVISION

(48 CONTIGUOUS STATES)

	Week Ended January 19		52 Weeks Ended January 19	
	GWh Output	% Increase Over Corresponding Week of 2007	GWh Output	% Increase Over Corresponding Period of 2007
New England	2,628	-2.0	134,574	2.2
Mid-Atlantic	8,742	1.5	459,614	3.6
Central Industrial	14,783	2.4	723,224	4.0
West Central	7,076	1.2	352,852	2.4
Southeast	22,433	7.7	1,110,780	3.5
South Central	11,507	-10.6	597,315	-1.1
Rocky Mountain	5,237	1.4	278,096	6.0
Pacific Northwest	3,968	-5.0	159,553	4.3
Pacific Southwest	4,977	-14.6	290,214	-0.8
Total United States	81,351	-0.3	4,106,222	2.7

WEEKLY ELECTRIC OUTPUT IN PREVIOUS WEEKS--GWh

Week Ended	2008	Week Ended	2007	% Inc. (08/07)	52 Weeks Ended	2008	% Inc. (08/07)
Dec 29	74,832	Dec 30	72,033	3.9	Dec 29	4,100,612	2.8
Jan 05	79,986	Jan 06	72,829	9.8	Jan 05	4,107,770	3.0
Jan 12	75,302	Jan 13	76,608	-1.7	Jan 12	4,106,463	2.9
Jan 19	81,351	Jan 20	81,592	-0.3	Jan 19	4,106,222	2.7
Jan 19	236,639	Jan 20	231,030	2.4	YEAR TO DATE, FIRST 3 WEEKS		

WEEKLY ELECTRIC OUTPUT INDEX--TOTAL U.S.*

SEASONALLY ADJUSTED 1982 = 100

Week Ended	2008	Week Ended	2007	Week Ended	2006
Dec 29	175	Dec 30	169	Dec 31	167
Jan 05	192	Jan 06	171	Jan 07	167
Jan 12	174	Jan 13	172	Jan 14	164
Jan 19	183	Jan 20	179	Jan 21	165

* Excludes Alaska and Hawaii.

+ Includes investor-owned companies, cooperatives and government-owned utilities.

Copyright © 2008 Edison Electric Institute. All rights reserved.

WEEKLY ELECTRIC OUTPUT BY GEOGRAPHIC DIVISION (48 CONTIGUOUS STATES)

	Week Ended			NMA CUMULATIVE JANUARY 1 to			52 Weeks Ended		
	19-Jan 2008 GWh Output	20-Jan 2007 GWh Output	% Increase Over Corresponding Week of 2007	19-Jan 2008 GWh Output	20-Jan 2007 GWh Output	% Increase Over Corresponding Week of 2007	19-Jan 2008 GWh Output	20-Jan 2007 GWh Output	% Increase Over Corresponding Week of 2007
New England	2,628	2,682	-2.0%	7,797	7,668	1.7%	134,574	131,693	2.2%
Mid-Atlantic	8,742	8,610	1.5%	25,769	24,824	3.8%	459,614	443,537	3.6%
Central Industrial	14,783	14,431	2.4%	42,366	41,282	2.6%	723,224	695,390	4.0%
West Central	7,076	6,992	1.2%	20,379	19,744	3.2%	352,852	344,687	2.4%
Southeast	22,433	20,831	7.7%	64,099	59,977	6.9%	1,110,780	1,073,259	3.5%
South Central	11,507	12,875	-10.6%	33,290	34,111	-2.4%	597,315	603,662	-1.1%
Rocky Mountain	5,237	5,167	1.4%	15,649	14,984	4.4%	278,096	262,366	6.0%
Pacific Northwest	3,968	4,179	-5.0%	12,014	11,539	4.1%	159,553	152,910	4.3%
Pacific Southwest	<u>4,977</u>	<u>5,825</u>	-14.6%	<u>15,276</u>	<u>16,900</u>	-9.6%	<u>290,214</u>	<u>292,466</u>	-0.8%
Total United States *	81,351	81,592	-0.3%	236,639	231,029	2.4%	4,106,222	3,999,970	2.7%

Notes: EEI output data are an estimate of electricity load made available for distribution derived as weekly net generation + purchases from non-utilities + net imports - exports - sales for resale. It is not meant to be a measure of electricity generation for the U.S. EEI survey data represent the majority of national distribution (large utilities, large government power projects, some independent and large municipal power projects). The remaining segment of the industry (smaller producers) is estimated. Non-utility generation is captured via direct sales to utilities.

* Excludes Alaska and Hawaii

** Less than one-tenth of one percent

SOURCE: Edison Electric Institute (EEI), *Weekly Electric Output Report*.

AMERICAN IRON AND STEEL INSTITUTE
 1140 Connecticut Avenue, Suite 705
 Washington, D.C. 20036

January 21, 2008

ESTIMATED WEEKLY RAW STEEL* PRODUCTION

<u>Period</u>	<u>Thousand Net Tons</u>	<u>Percent Change from Previous Period</u>	<u>Percent Capability Utilization**</u>	<u>Production by District</u>		
				<u>Week Ending</u>		
				<u>Jan 19</u>	<u>Jan 12</u>	
<u>Week Ending</u>				North East Coast	192	178
				Pgh/Youngstown	212	202
				Lake Erie	87	101
				Detroit	123	124
				Indiana/Chicago	470	503
				Midwest	265	256
				Southern	647	599
				Western	88	87
				Total	2084	2050
<u>Year-to-Date+</u>						
Jan 19, 2008	2,084	1.6	87.4			
Jan 19, 2007	1,877	11.0	78.2			
Jan 12, 2008	2,050	1.1	85.9			
Jan 19, 2008	6,161	9.4	86.1			
Jan 19, 2007	5,631	-	78.2			

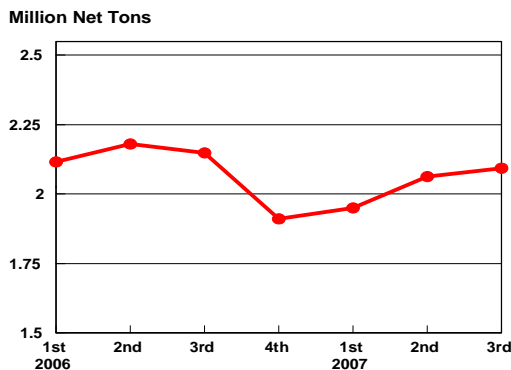
*Raw steel production tonnage included in this report is estimated based on a sampling of steel producers. Therefore, this report should be used primarily to assess production trends. The AISI production report "AIS 7," produced monthly and available by subscription, provides a more accurate summary of steel production based on data supplied by companies representing approximately 75% of U.S. production capacity.

+Includes revisions for previous months

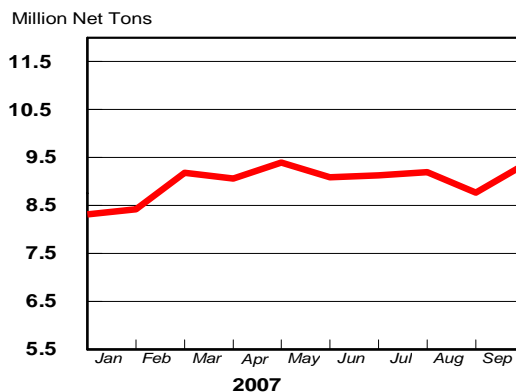
NOTE: Capability for the Fourth Quarter 2007 is approximately 31.3 million net tons vs 30.7 million net tons for the same period last year, and 30.1 million tons for the third quarter of 2007.

Capability -	2003 approx.	2.3 million tons/week
	2004	2.2
	2005	2.3
	2006	2.4
	2007	2.4

Average Weekly Raw Steel Production

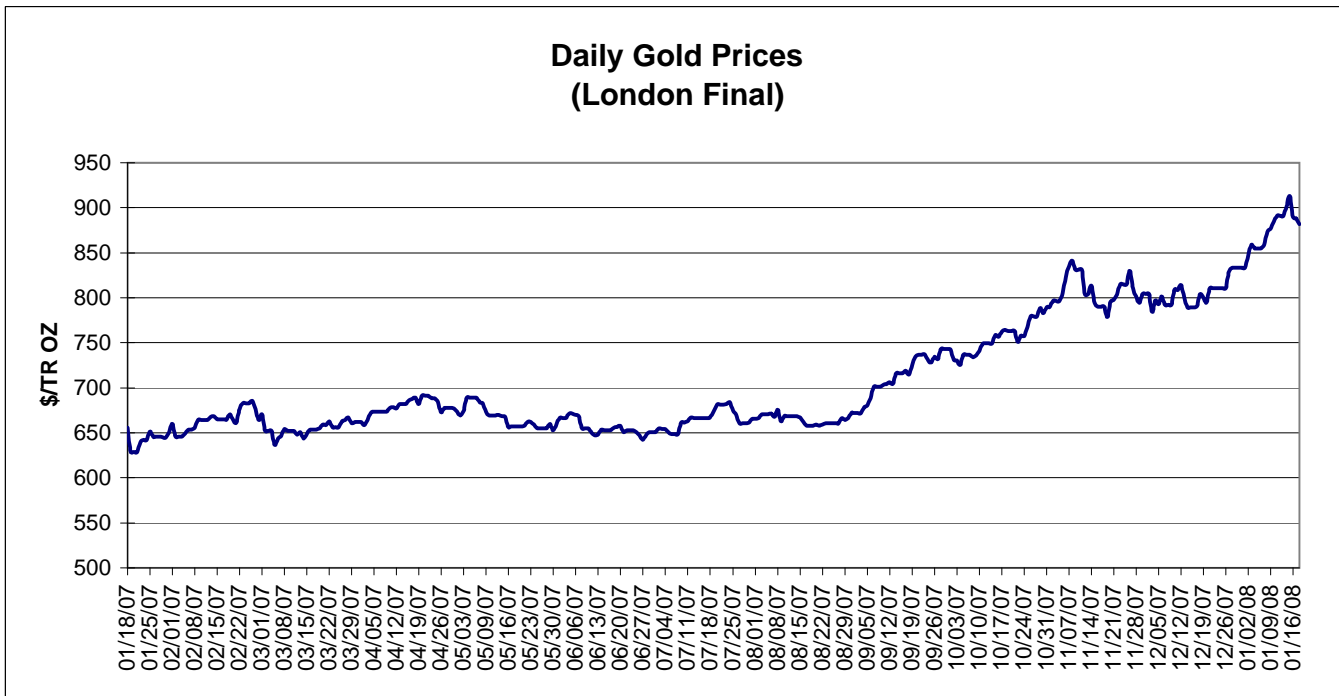
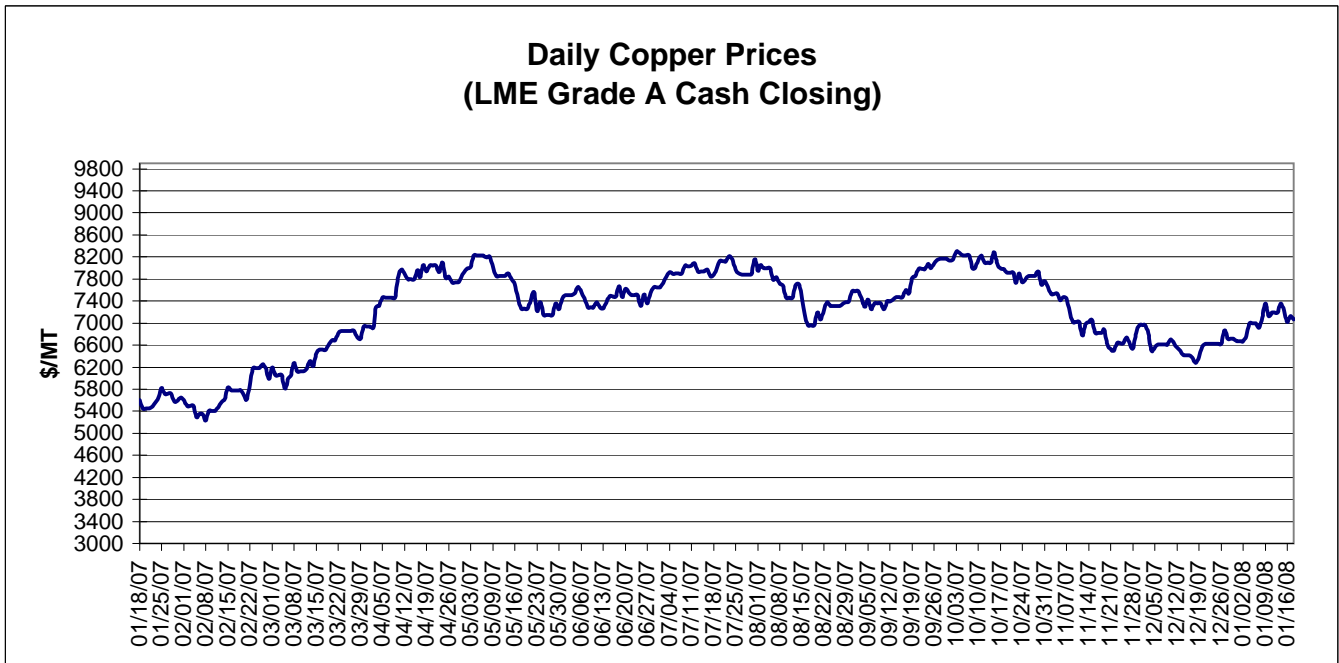


MONTHLY RAW STEEL PRODUCTION



*Steel in the first solid state after melting suitable for further processing or sale, including ingots, steel for castings and strand or pressure cast blooms, slabs, or other product forms.

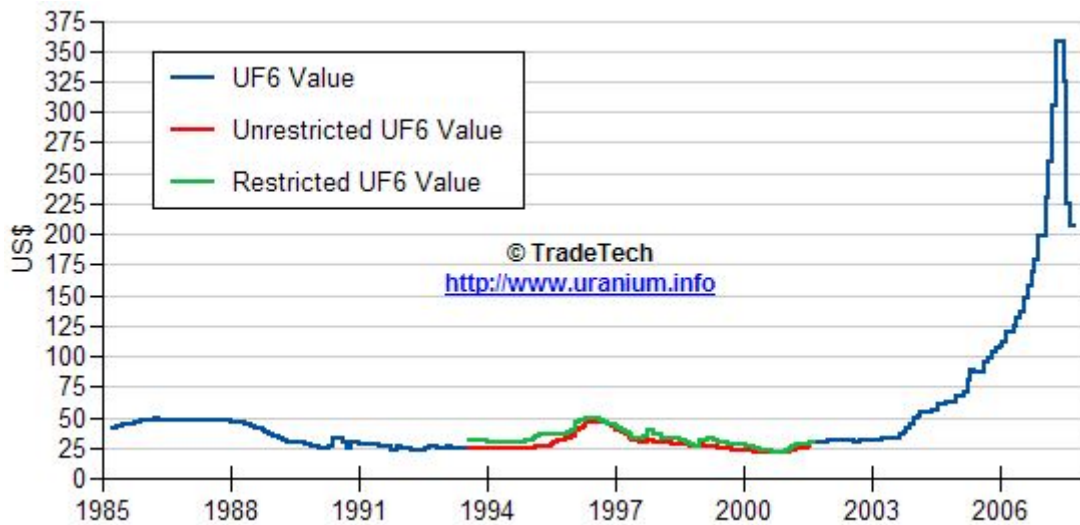
** Based on tonnage capability to produce raw steel for a sustained full order book.



Data reflect closings on weekends and holidays.

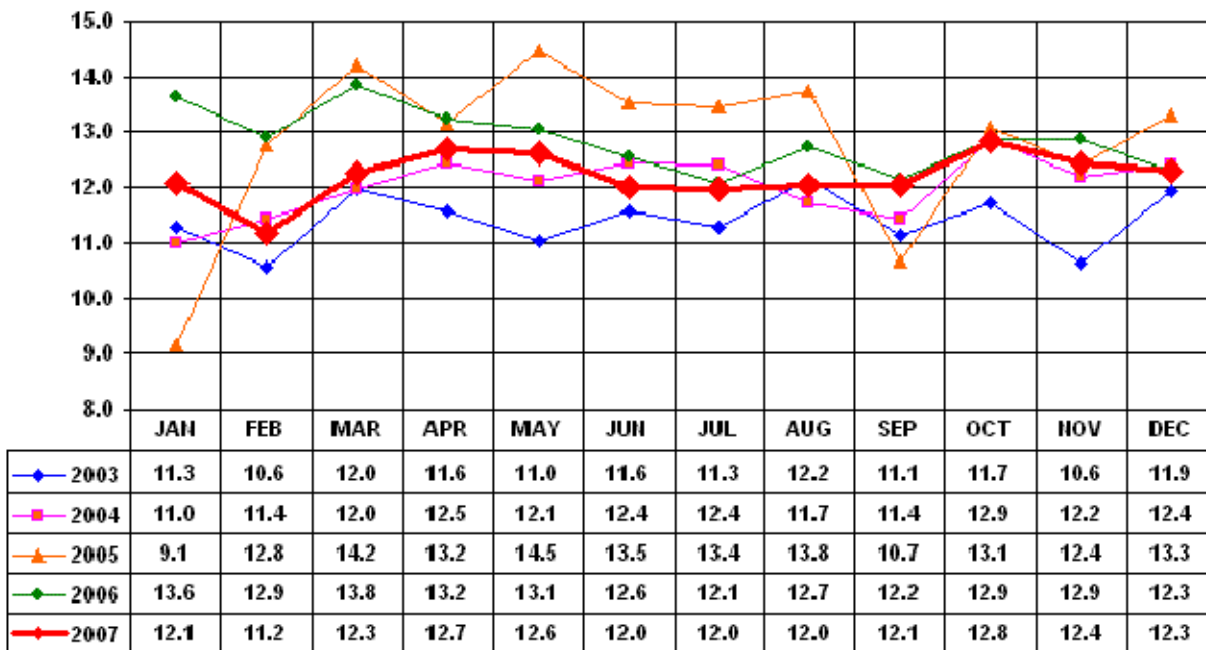
Source: Platts Metals Week

Trade Tech's Uranium (UF6) Monthly Spot Prices (US\$/kg as UF6)



Source: Trade Tech, Uranium Info Website – <http://www.uranium.info>

Coal and Coke Monthly Tonnage Indicator for Internal U.S. Waterways



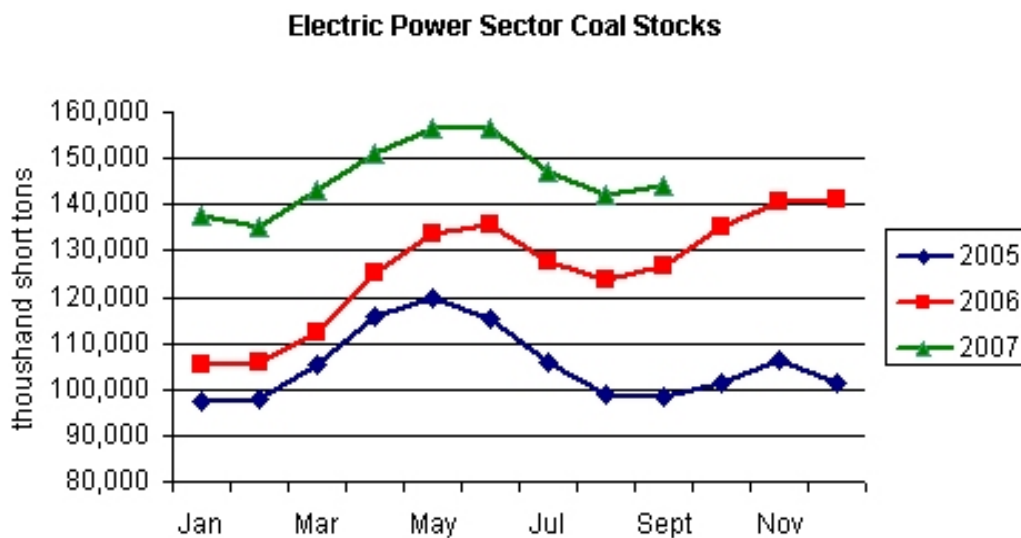
Source: U.S. Army Corps of engineers, Waterborne Commerce Statistics Center

EIA Weekly Spot Coal Prices

The following average spot coal prices appear in the graphic below, for the previous and most recent weeks:

Week Ended	Central Appalachia 12,500 Btu, 1.2 SO2	Northern Appalachia 13,000 Btu, <3.0 SO2	Illinois Basin 11,800 Btu, 5.0 SO2	Powder River Basin 8,800 Btu, 0.8 SO2	Uinta Basin 11,700 Btu, 0.8 SO2
07-Dec-07	\$57.70	\$55.25	\$33.50	\$11.50	\$24.00
14-Dec-07	\$57.70	\$55.25	\$33.50	\$11.50	\$24.00
21-Dec-07	\$57.70	\$55.25	\$33.50	\$11.50	\$24.00
04-Jan-08	\$58.30	\$61.75	\$34.00	\$11.60	\$24.00
11-Jan-08	\$58.30	\$61.75	\$34.00	\$11.65	\$24.00
18-Jan-08	\$58.30	\$61.75	\$34.00	\$11.85	\$33.00

Source: Energy Information Administration (from Platts *Coal Outlook*, "Weekly Price Survey")



Source: Energy Information Administration