
National Mining Association

Weekly Statistical Summary

December 7, 2007 Edition
(Data for Week Ending December 1, 2007)

Prepared by
National Mining Association



Suite 500 East, 101 Constitution Avenue, NW
Washington, DC, 20001
Phone (202) 463-2600
Visit us at <http://www.nma.org>

NMA Weekly Statistical Summary

Vol. 45, No. 48
Dated 12/07/07

PRODUCTION, CONSUMPTION & TRADE						
	Week Ended			Cumulative Jan 1 to		
	12/01/07	12/02/06	% Chng	12/01/07	12/02/06	% Chng
EIA Coal Production (000 Tons):						
Week Ended/Year to Date	23,592	22,416	5.2%	1,058,217	1,070,480	-1.1%
52 Weeks Ended	1,148,762	1,156,030	-0.6%			
Month Ended -- November						
	November 07/06		% Chng	Jan - Nov 07/06		% Chng
	98,244	96,526	1.8%	1,056,389	1,066,687	-1.0%
MONTH ENDED AND CUMULATIVE NUMBERS ARE PRELIMINARY AND SUBJECT TO CHANGE						
DOC Bituminous Coal Trade (000 Tons)						
Exports:						
	September 07/06		% Chng	Jan - Sep 07/06		% Chng
Metallurgical	2,731	2,488	9.8%	23,856	20,499	16.4%
Steam	2,139	2,595	-17.6%	17,836	16,054	11.1%
Imports:						
	3,470	3,370	3.0%	27,750	27,313	1.6%
Week Ended						
	12/01/07	12/02/06	% Chng	Cumulative Jan 1 to		
				12/01/07	12/02/06	% Chng
EEl Electric Output (Mil. Kwh)	76,233	73,799	3.3%	3,785,680	3,684,560	2.7%
AISI Raw Steel Output (000 Tons)	2,024	1,865	8.5%	98,230	101,321	-3.1%
EIA U.S. PETROLEUM DATA						
4-Week Averages 000 Barrels per Day						
Week Ending						
	11/30/07	11/30/06	% Chng	Cumulative Daily Averages		
				2007	2006	% Chng
PETROLEUM SUPPLY:						
Domestic Crude	5,082	5,105	-0.5	5,134	5,096	0.7
Net Imports (Incl. SPR)	9,984	9,864	1.2	9,969	10,138	-1.7
SPR Stocks W/D or Added	-49	0	--	-21	-12	--
Other Stocks W/D or added	237	161	--	33	-33	--
Natural Gas Liquids Prod.	2,403	2,487	-3.4	2,382	2,223	7.2



NMA

THE AMERICAN RESOURCE

National Mining Association Web Site: [http:// www.nma.org](http://www.nma.org)

EIA Estimated Weekly U.S. Coal Production Overview (Thousand Short Tons)

Coal-Producing Region and State	Week Ended			Year to Date			52 Weeks Ended		
	12/1/2007	11/24/2007	12/2/2006	12/1/2007	12/1/2006	Percent Change	12/1/2007	12/2/2006	Percent Change
Alabama	380	326	346	18,014	17,710	1.7	19,324	19,073	1.3
Alaska	29	25	30	1,388	1,309	6.0	1,504	1,403	7.2
Arizona	136	116	158	7,201	7,613	-5.4	7,804	8,412	-7.2
Arkansas	2	1	1	56	19	194.9	60	19	211.5
Colorado	732	628	704	34,052	33,454	1.8	36,845	35,964	2.4
Illinois	680	583	638	32,220	30,194	6.7	34,729	32,478	6.9
Indiana	716	613	685	32,851	32,416	1.3	35,531	35,131	1.1
Kansas	10	9	11	419	379	10.6	466	391	19.2
Kentucky Total	2,360	2,023	2,202	107,599	112,475	-4.3	116,200	121,080	-4.0
Eastern	1,735	1,487	1,675	80,839	87,291	-7.4	87,377	94,065	-7.1
Western	624	535	527	26,760	25,184	6.3	28,823	27,015	6.7
Louisiana	97	97	76	2,846	3,694	-23.0	3,258	4,069	-19.9
Maryland	75	64	52	3,144	4,851	-35.2	3,347	5,229	-36.0
Mississippi	59	39	65	3,352	3,498	-4.2	3,645	3,731	-2.3
Missouri	5	4	6	235	372	-36.8	257	422	-39.1
Montana	863	740	822	37,450	38,440	-2.6	40,735	41,428	-1.7
New Mexico	501	430	524	23,598	23,863	-1.1	25,636	26,098	-1.8
North Dakota	593	508	611	26,117	28,031	-6.8	28,497	30,282	-5.9
Ohio	452	387	431	20,566	21,038	-2.2	22,235	22,888	-2.9
Oklahoma	39	33	34	1,683	1,865	-9.8	1,816	2,007	-9.5
Pennsylvania Total	1,280	1,097	1,239	60,414	61,313	-1.5	65,259	66,347	-1.6
Anthracite	35	30	29	1,424	1,420	0.3	1,542	1,529	0.9
Bituminous	1,245	1,067	1,211	58,990	59,893	-1.5	63,717	64,819	-1.7
Tennessee	51	44	51	2,495	2,608	-4.3	2,691	2,849	-5.5
Texas	887	760	869	39,338	41,968	-6.3	42,806	45,776	-6.5
Utah	479	410	524	22,396	23,959	-6.5	24,442	25,899	-5.6
Virginia	566	485	548	26,446	27,732	-4.6	28,566	29,623	-3.6
Washington	0	0	0	0	2,580	-100.0	s	3,048	-100.0
West Virginia Total	3,028	2,596	2,809	141,852	141,303	0.4	152,829	152,268	0.4
Northern	918	787	748	42,207	39,461	7.0	45,122	42,512	6.1
Southern	2,110	1,809	2,061	99,645	101,842	-2.2	107,707	109,756	-1.9
Wyoming	9,573	9,367	8,981	412,484	407,796	1.1	450,279	440,116	2.3
Appalachian Total	7,567	6,486	7,150	353,770	363,846	-2.8	381,629	392,341	-2.7
Interior Total	3,119	2,675	2,911	139,761	139,589	0.1	151,391	151,039	0.2
Western Total	12,906	12,224	12,354	564,686	567,045	-0.4	615,742	612,650	0.5
East of Miss. River	9,646	8,256	9,065	448,953	455,138	-1.4	484,356	490,696	-1.3
West of Miss. River	13,946	13,129	13,351	609,264	615,343	-1.0	664,405	665,334	-0.1
Bituminous and Lignite	23,557	21,356	22,387	1,056,793	1,069,060	-1.1	1,147,220	1,154,501	-0.6
Anthracite	35	30	29	1,424	1,420	0.3	1,542	1,529	0.9
U.S. Total	23,592	21,385	22,416	1,058,217	1,070,480	-1.1	1,148,762	1,156,030	-0.6
Railroad Cars Loaded	154,454	136,258	144,356	6,853,665	6,890,381	-0.5	7,418,641	7,421,230	*

Source: Energy Information Administration

EIA Estimated Monthly U.S. Coal Production Overview (Thousand Short Tons)

Coal-Producing Region and State	Week Ended		Year to Date		Month Ended		January - November		Percent Change
	12/1/2007	12/2/2006	12/1/2007	12/1/2006	November 2007	November 2006	2007	2006	
Alabama	380	346	18,014	17,710	1,592	1,509	18,012	17,641	2.1
Alaska	29	30	1,388	1,309	124	130	1,388	1,304	6.5
Arizona	136	158	7,201	7,613	569	692	7,201	7,581	-5.0
Arkansas	2	1	56	19	6	3	56	19	196.7
Colorado	732	704	34,052	33,454	3,009	3,017	33,974	33,343	1.9
Illinois	680	638	32,220	30,194	2,829	2,767	32,192	30,076	7.0
Indiana	716	685	32,851	32,416	2,983	2,978	32,827	32,288	1.7
Kansas	10	11	419	379	42	46	419	377	11.2
Kentucky Total	2,360	2,202	107,599	112,475	9,854	9,585	107,543	112,055	-4.0
Eastern	1,735	1,675	80,839	87,291	7,257	7,302	80,811	86,967	-7.1
Western	624	527	26,760	25,184	2,597	2,283	26,732	25,088	6.6
Louisiana	97	76	2,846	3,694	380	304	2,836	3,682	-23.0
Maryland	75	52	3,144	4,851	313	227	3,144	4,840	-35.1
Mississippi	59	65	3,352	3,498	240	287	3,346	3,487	-4.1
Missouri	5	6	235	372	19	26	235	371	-36.6
Montana	863	822	37,450	38,440	3,537	3,514	37,347	38,315	-2.5
New Mexico	501	524	23,598	23,863	2,094	2,281	23,588	23,763	-0.7
North Dakota	593	611	26,117	28,031	2,488	2,673	26,117	27,909	-6.4
Ohio	452	431	20,566	21,038	1,883	1,871	20,550	20,958	-1.9
Oklahoma	39	34	1,683	1,865	163	151	1,683	1,858	-9.4
Pennsylvania Total	1,280	1,239	60,414	61,313	5,352	5,402	60,394	61,074	-1.1
Anthracite	35	29	1,424	1,420	146	126	1,424	1,414	0.7
Bituminous	1,245	1,211	58,990	59,893	5,206	5,276	58,969	59,659	-1.2
Tennessee	51	51	2,495	2,608	215	224	2,495	2,598	-4.0
Texas	887	869	39,338	41,968	3,628	3,676	39,224	41,839	-6.3
Utah	479	524	22,396	23,959	1,998	2,279	22,384	23,860	-6.2
Virginia	566	548	26,446	27,732	2,357	2,379	26,425	27,630	-4.4
Washington	0	0	0	2,580	0	183	0	2,580	-100.0
West Virginia Total	3,028	2,809	141,852	141,303	12,623	12,203	141,752	140,779	0.7
Northern	918	748	42,207	39,461	3,829	3,253	42,181	39,320	7.3
Southern	2,110	2,061	99,645	101,842	8,794	8,950	99,572	101,458	-1.9
Wyoming	9,573	8,981	412,484	407,796	39,945	38,120	411,256	406,460	1.2
Appalachian Total	7,567	7,150	353,770	363,846	31,592	31,115	353,583	362,487	-2.5
Interior Total	3,119	2,911	139,761	139,589	12,888	12,521	139,550	139,087	0.3
Western Total	12,906	12,354	564,686	567,045	53,764	52,890	563,256	565,113	-0.3
East of Miss. River	9,646	9,065	448,953	455,138	40,241	39,430	448,680	453,427	-1.0
West of Miss. River	13,946	13,351	609,264	615,343	58,003	57,096	607,709	613,260	-0.9
Bituminous and Lignite	23,557	22,387	1,056,793	1,069,060	98,098	96,400	1,054,965	1,065,273	-1.0
Anthracite	35	29	1,424	1,420	146	126	1,424	1,414	0.7
U.S. Total	23,592	22,416	1,058,217	1,070,480	98,244	96,526	1,056,389	1,066,687	-1.0
Railroad Cars Loaded	154,454	144,356	6,853,665	6,890,381	--	--	--	--	--

Source: Energy Information Administration


WEEKLY ELECTRIC OUTPUT
Essential Energy Information from EII's Statistics Department
Volume 75 No. 48
OUTPUT FOR WEEK ENDED - Dec 01, 2007
Dec 05, 2007

The net available amount of electric energy distributed by the Total Electric Utility Industry+ for the week ended Saturday, Dec 01, 2007 was **76,233** gigawatthours (GWh), according to the Edison Electric Institute. This is equivalent to **193** on the weekly electric output index.

WEEKLY ELECTRIC OUTPUT BY GEOGRAPHIC DIVISION

(48 CONTIGUOUS STATES)

	Week Ended December 01		52 Weeks Ended December 01	
	GWh Output	% Increase Over Corresponding Week of 2006	GWh Output	% Increase Over Corresponding Period of 2006
New England	2,548	4.7	133,888	1.1
Mid-Atlantic	8,500	6.5	456,554	2.4
Central Industrial	13,966	8.5	720,161	3.2
West Central	6,618	3.3	351,210	1.9
Southeast	20,780	5.5	1,104,313	2.7
South Central	10,202	-2.2	597,517	-0.2
Rocky Mountain	5,283	3.1	275,608	6.2
Pacific Northwest	3,654	0.1	158,288	4.2
Pacific Southwest	4,682	-10.0	292,449	0.3
Total United States	76,233	3.3	4,089,988	2.3

WEEKLY ELECTRIC OUTPUT IN PREVIOUS WEEKS--GWh

Week Ended	2007	Week Ended	2006	% Inc. (07/06)	52 Weeks Ended	2007	% Inc. (07/06)
Nov 10	72,953	Nov 11	71,604	1.9	Nov 10	4,086,044	2.2
Nov 17	73,355	Nov 18	72,042	1.8	Nov 17	4,087,356	2.2
Nov 24	71,597	Nov 25	71,398	0.3	Nov 24	4,087,555	2.2
Dec 01	76,233	Dec 02	73,799	3.3	Dec 01	4,089,988	2.3
Dec 01	3,785,680	Dec 02	3,684,560	2.7	YEAR TO DATE, FIRST 48 WEEKS		

WEEKLY ELECTRIC OUTPUT INDEX--TOTAL U.S.*

SEASONALLY ADJUSTED 1982 = 100

Week Ended	2007	Week Ended	2006	Week Ended	2005
Nov 10	185	Nov 11	182	Nov 12	175
Nov 17	184	Nov 18	181	Nov 19	179
Nov 24	179	Nov 25	179	Nov 26	181
Dec 01	193	Dec 02	188	Dec 03	176

* Excludes Alaska and Hawaii.

+ Includes investor-owned companies, cooperatives and government-owned utilities.

Copyright © 2007 Edison Electric Institute. All rights reserved.

WEEKLY ELECTRIC OUTPUT BY GEOGRAPHIC DIVISION (48 CONTIGUOUS STATES)

	Week Ended			NMA CUMULATIVE JANUARY 1 to			52 Weeks Ended		
	1-Dec 2007 GWh Output	2-Dec 2006 GWh Output	% Increase Over Corresponding Week of 2006	1-Dec 2007 GWh Output	2-Dec 2006 GWh Output	% Increase Over Corresponding Week of 2006	1-Dec 2007 GWh Output	2-Dec 2006 GWh Output	% Increase Over Corresponding Week of 2006
New England	2,548	2,434	4.7%	123,671	121,607	1.7%	133,888	132,418	1.1%
Mid-Atlantic	8,500	7,977	6.6%	422,756	409,952	3.1%	456,554	445,888	2.4%
Central Industrial	13,966	12,868	8.5%	665,397	640,123	3.9%	720,161	698,044	3.2%
West Central	6,618	6,405	3.3%	324,731	317,671	2.2%	351,210	344,661	1.9%
Southeast	20,780	19,699	5.5%	1,023,302	991,081	3.3%	1,104,313	1,075,563	2.7%
South Central	10,202	10,435	-2.2%	555,462	556,315	-0.2%	597,517	598,853	-0.2%
Rocky Mountain	5,283	5,127	3.0%	255,280	240,295	6.2%	275,608	259,580	6.2%
Pacific Northwest	3,654	3,652	0.1%	144,027	137,112	5.0%	158,288	151,930	4.2%
Pacific Southwest	<u>4,682</u>	<u>5,202</u>	-10.0%	<u>271,054</u>	<u>270,406</u>	0.2%	<u>292,449</u>	<u>291,629</u>	0.3%
Total United States *	76,233	73,799	3.3%	3,785,680	3,684,562	2.7%	4,089,988	3,998,566	2.3%

Notes: EEI output data are an estimate of electricity load made available for distribution derived as weekly net generation + purchases from non-utilities + net imports - exports - sales for resale. It is not meant to be a measure of electricity generation for the U.S. EEI survey data represent the majority of national distribution (large utilities, large government power projects, some independent and large municipal power projects). The remaining segment of the industry (smaller producers) is estimated. Non-utility generation is captured via direct sales to utilities.

* Excludes Alaska and Hawaii

** Less than one-tenth of one percent

SOURCE: Edison Electric Institute (EEI), *Weekly Electric Output Report*.

AMERICAN IRON AND STEEL INSTITUTE
 1140 Connecticut Avenue, Suite 705
 Washington, D.C. 20036

December 3, 2007

ESTIMATED WEEKLY RAW STEEL* PRODUCTION

<u>Period</u>	<u>Thousand Net Tons</u>	<u>Percent</u>		<u>Production by District</u>		
		<u>Change from Previous Period</u>	<u>Capability Utilization**</u>	<u>Week Ending</u>		
				<u>Dec 1</u>	<u>Nov 24</u>	
<u>Week Ending</u>						
				North East Coast	123	115
				Pgh/Youngstown	185	182
				Lake Erie	100	94
				Detroit	133	134
				Indiana/Chicago	511	558
				Midwest	258	243
				Southern	624	635
				Western	<u>90</u>	<u>83</u>
				Total	2024	2044
<u>Year-to-Date+</u>						
Dec 1, 2007	2,024	-0.9	84.9			
Dec 1, 2006	1,865	8.5	81.5			
Nov. 24, 2007	2,044	-0.4	85.7			
Dec 1, 2007	98,230	-3.0	86.0			
Dec 1, 2006	101,321	-	89.0			

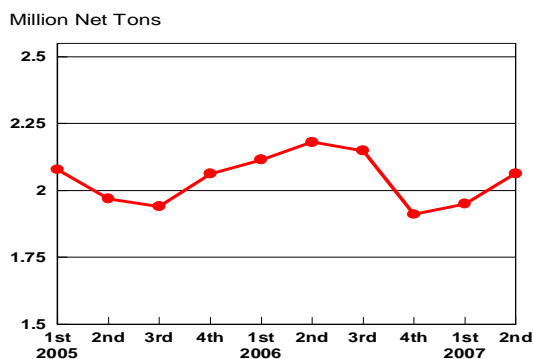
*Raw steel production tonnage included in this report is estimated based on a sampling of steel producers. Therefore, this report should be used primarily to assess production trends. The AISI production report "AIS 7," produced monthly and available by subscription, provides a more accurate summary of steel production based on data supplied by companies representing approximately 75% of U.S. production capacity.

+Includes revisions for previous months

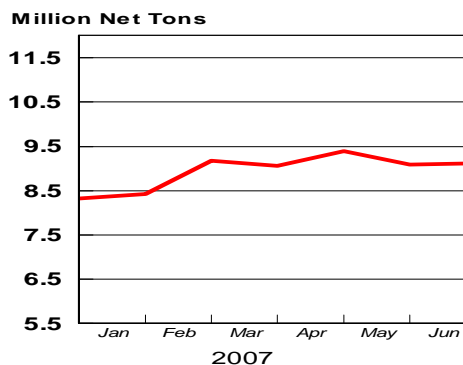
NOTE: Capability for the Fourth Quarter 2007 is approximately 31.3 million net tons vs 30.7 million net tons for the same period last year, and 30.1 million tons for the third quarter of 2007.

Capability -	2003 approx.	2004	2005	2006	2007
	2.3 million tons/week	2.2	2.3	2.4	2.4

Average Weekly Raw Steel Production

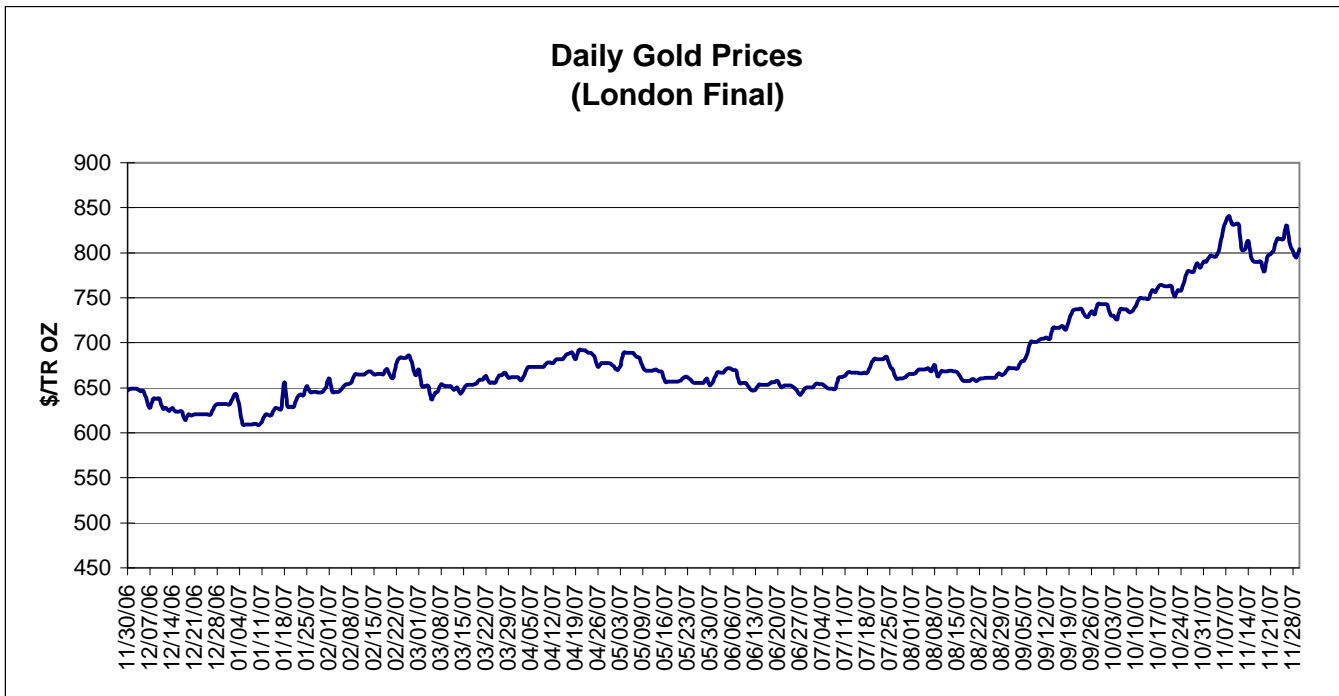
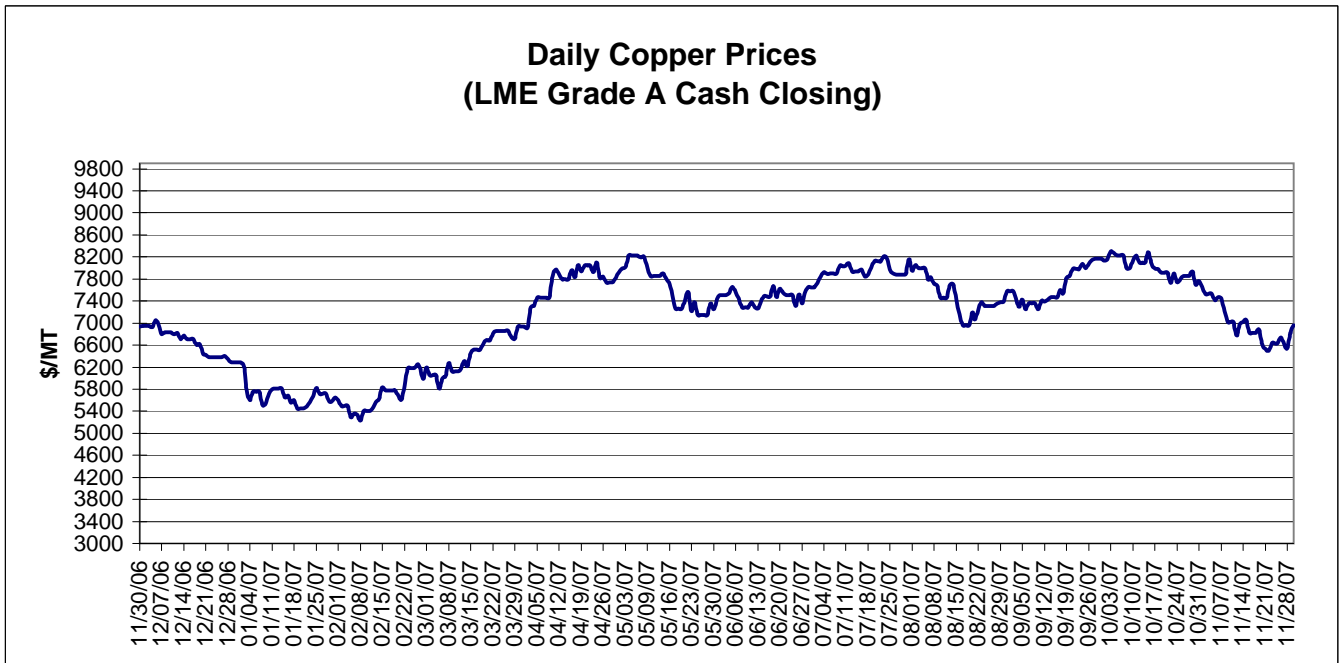


MONTHLY RAW STEEL PRODUCTION



*Steel in the first solid state after melting suitable for further processing or sale, including ingots, steel for castings and strand or pressure cast blooms, slabs, or other product forms.

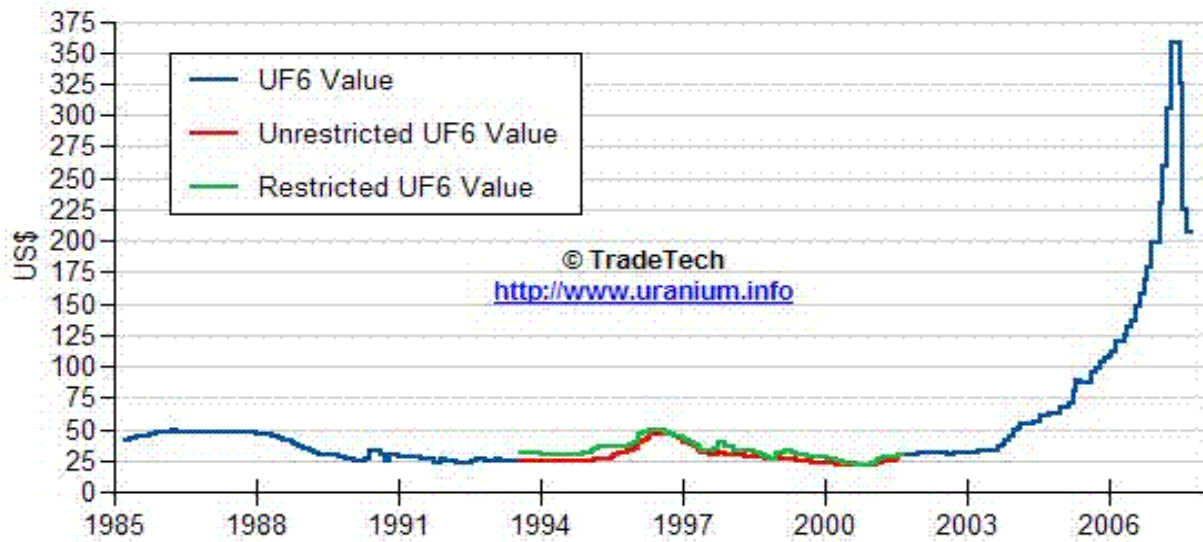
** Based on tonnage capability to produce raw steel for a sustained full order book.



Data reflect closings on weekends and holidays.

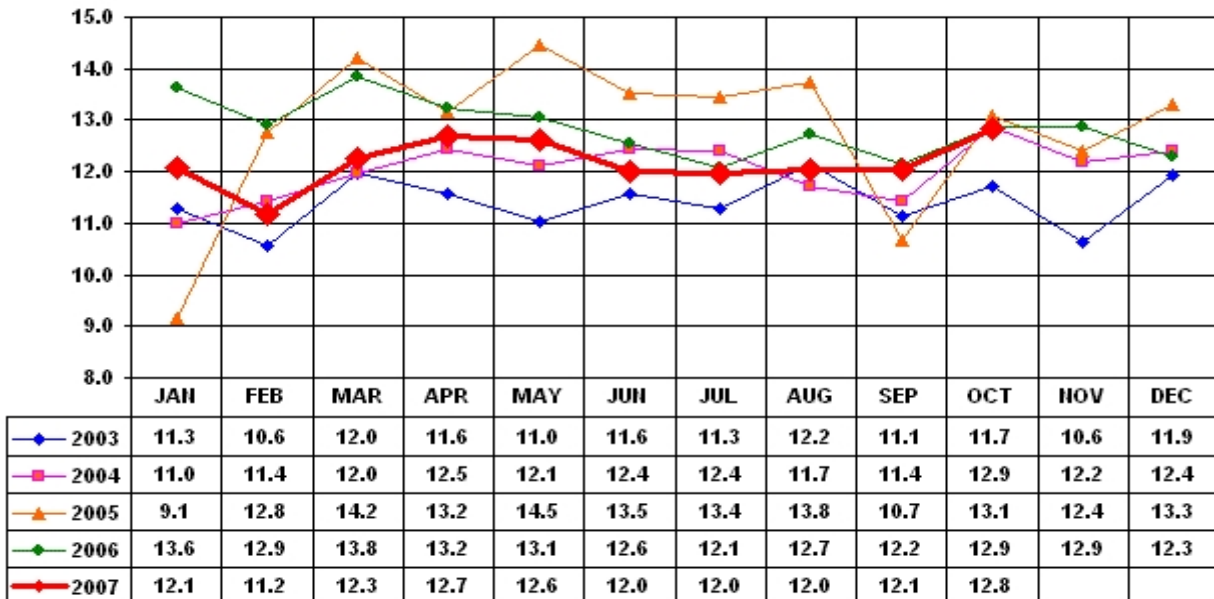
Source: Platts Metals Week

Trade Tech's Uranium (UF6) Monthly Spot Prices (US\$/kg as UF6)



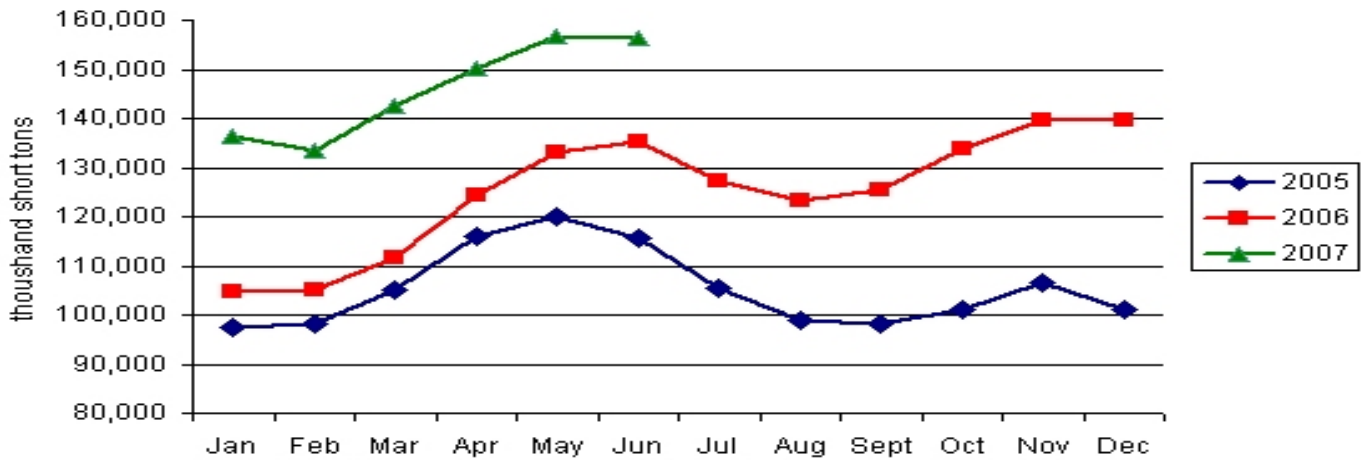
Source: Trade Tech, Uranium Info Website – <http://www.uranium.info>

Coal and Coke Monthly Tonnage Indicator for Internal U.S. Waterways



Source: U.S. Army Corps of engineers, Waterborne Commerce Statistics Center

Electric Power Sector Coal Stocks



Source: Energy Information Administration

EIA Weekly Spot Coal Prices

The following average spot coal prices appear in the graphic below, for the previous and most recent weeks:

Week Ended	Central Appalachia 12,500 Btu, 1.2 SO2	Northern Appalachia 13,000 Btu, <3.0 SO2	Illinois Basin 11,800 Btu, 5.0 SO2	Powder River Basin 8,800 Btu, 0.8 SO2	Uinta Basin 11,700 Btu, 0.8 SO2
26-Oct-07	\$49.90	\$46.50	\$33.50	\$11.05	\$24.00
02-Nov-07	\$49.90	\$46.50	\$33.50	\$11.05	\$24.00
09-Nov-07	\$49.90	\$46.50	\$33.50	\$11.05	\$24.00
16-Nov-07	\$52.95	\$55.25	\$33.50	\$11.05	\$24.00
23-Nov-07	\$52.95	\$55.25	\$33.50	\$11.05	\$24.00
30-Nov-07	\$56.80	\$55.25	\$33.50	\$11.15	\$24.00

Source: Energy Information Administration (from Platts *Coal Outlook*, "Weekly Price Survey")