
National Mining Association

Weekly Statistical Summary

January 30, 2009 Edition
(Data for Week Ending January 24, 2009)

Prepared by
National Mining Association



Suite 500 East, 101 Constitution Avenue, NW
Washington, DC, 20001
Phone (202) 463-2600
Visit us at <http://www.nma.org>

NMA Weekly Statistical Summary

Vol. 47, No. 4
Dated 01/30/09

PRODUCTION, CONSUMPTION & TRADE						
	Week Ended			* Cumulative Jan 1 to		
	01/24/09	01/26/08	% Chng	01/24/09	01/24/08	% Chng
EIA Coal Production (000 Tons):						
Week Ended/Year to Date	21,891	22,020	-0.6%	75,537	76,639	-1.4%
52 Weeks Ended	1,163,684	1,142,018	1.9%			
* Due to leap year, 2008 cumulative reflects one extra day of tonnage.						
	December 08/07		% Chng	Jan - Dec 08/07		% Chng
Month Ended -- December	99,271	93,138	6.6%	1,170,188	1,146,635	2.1%
MONTH ENDED AND CUMULATIVE NUMBERS ARE PRELIMINARY AND SUBJECT TO CHANGE						
DOC Bituminous Coal Trade (000 Tons)						
	Nov 08/07		% Chng	Jan - Nov 08/07		% Chng
Exports:						
Metallurgical	3,636	3,096	17.4%	40,363	29,528	36.7%
Steam	3,785	3,119	21.4%	34,152	23,273	46.7%
Imports:	2,988	2,889	3.4%	31,015	33,535	-7.5%
	Week Ended			* Cumulative Jan 1 to		
	01/24/09	01/26/08	% Chng	01/24/09	01/26/08	% Chng
EEl Electric Output (Mil. Kwh)	81,621	86,441	-5.6%	315,340	323,080	-2.4%
AISI Raw Steel Output (000 Tons)	1,025	2,154	-52.4%	3,504	7,384	-52.5%
Data not available for AISI Raw Steel						
EIA U.S. PETROLEUM DATA						
4-Week Averages						
000 Barrels per Day						
	Week Ending			Cumulative Daily Averages		
	01/23/09	01/23/08	% Chng	2008	2007	% Chng
PETROLEUM SUPPLY:						
Domestic Crude	4,987	5,085	-1.9			
Net Imports (Incl. SPR)	9,919	9,951	-0.3			
SPR Stocks W/D or Added	-35	-45	--			
Other Stocks W/D or added	-719	-169	--			
Natural Gas Liquids Prod.	2,103	2,196	-4.2			
Cumulative daily petroleum averages will be shown beginning with week ending April 3, 2009 data.						



NMA

THE AMERICAN RESOURCE National Mining Association Web Site: [http:// www.nma.org](http://www.nma.org)

EIA Estimated Weekly U.S. Coal Production Overview (Thousand Short Tons)

Coal-Producing Region and State	Week Ended			Year to Date			52 Weeks Ended		
	1/24/2009	1/17/2009	1/26/2008	1/24/2009	1/24/2008	Percent Change	1/24/2009	1/26/2008	Percent Change
Alabama	399	414	437	1,377	1,502	-8.4	20,568	19,543	5.2
Alaska	24	25	30	81	100	-18.8	1,346	1,292	4.2
Arizona	162	168	145	550	521	5.5	8,031	7,916	1.4
Arkansas	1	1	1	4	4	-6.1	58	82	-28.5
Colorado	651	676	636	2,270	2,142	6.0	33,689	36,321	-7.2
Illinois	572	593	601	1,954	2,032	-3.8	31,754	32,094	-1.1
Indiana	681	707	674	2,358	2,319	1.7	35,961	34,841	3.2
Kansas	5	5	6	17	21	-15.9	282	410	-31.2
Kentucky Total	2,082	2,159	2,314	7,124	7,959	-10.5	117,656	114,956	2.3
Eastern	1,560	1,617	1,747	5,324	6,028	-11.7	88,480	86,894	1.8
Western	522	541	568	1,800	1,931	-6.8	29,175	28,062	4.0
Louisiana	96	106	73	320	289	10.8	3,966	3,150	25.9
Maryland	47	48	40	159	138	15.3	2,578	2,267	13.7
Mississippi	60	40	45	184	229	-19.6	2,694	3,543	-24.0
Missouri	6	6	4	19	14	36.6	257	233	10.1
Montana	825	856	872	2,891	2,944	-1.8	43,987	43,589	0.9
New Mexico	554	574	356	1,922	1,233	55.8	28,192	24,099	17.0
North Dakota	536	556	543	1,862	1,894	-1.7	29,496	29,262	0.8
Ohio	454	471	470	1,576	1,613	-2.3	25,365	22,601	12.2
Oklahoma	31	33	30	108	105	3.2	1,471	1,633	-9.9
Pennsylvania Total	1,210	1,254	1,326	4,150	4,547	-8.7	63,841	64,721	-1.4
Anthracite	21	22	30	71	101	-29.8	1,489	1,554	-4.2
Bituminous	1,189	1,233	1,297	4,079	4,446	-8.3	62,353	63,167	-1.3
Tennessee	46	48	49	156	169	-7.4	2,429	2,617	-7.2
Texas	746	774	718	2,610	2,419	7.9	38,464	41,638	-7.6
Utah	434	450	508	1,477	1,736	-14.9	23,451	24,313	-3.5
Virginia	467	484	438	1,613	1,495	7.9	24,842	24,862	-0.1
West Virginia Total	2,906	3,013	3,057	10,014	10,474	-4.4	158,246	152,620	3.7
Northern	783	812	798	2,651	2,688	-1.4	40,524	41,548	-2.5
Southern	2,123	2,201	2,260	7,363	7,786	-5.4	117,722	111,072	6.0
Wyoming	8,895	9,102	8,647	30,740	30,740	*	465,061	453,416	2.6
Appalachian Total	7,089	7,350	7,564	24,369	25,966	-6.2	386,349	376,124	2.7
Interior Total	2,721	2,805	2,720	9,375	9,363	0.1	144,083	145,686	-1.1
Western Total	12,082	12,406	11,737	41,794	41,310	1.2	633,253	620,208	2.1
East of Miss. River	8,924	9,232	9,452	30,665	32,477	-5.6	485,933	474,664	2.4
West of Miss. River	12,967	13,330	12,569	44,872	44,162	1.6	677,751	667,354	1.6
Bituminous and Lignite	21,870	22,540	21,990	75,466	76,537	-1.4	1,162,195	1,140,464	1.9
Anthracite	21	22	30	71	101	-29.8	1,489	1,554	-4.2
U.S. Total	21,891	22,562	22,020	75,537	76,639	-1.4	1,163,684	1,142,018	1.9
Railroad Cars Loaded	137,004	141,927	141,488	563,532	568,533	-0.9	7,647,568	7,413,814	3.2

Source: Energy Information Administration



Volume 77 No. 4

OUTPUT FOR WEEK ENDED - Jan 24, 2009

Jan 28, 2009

The net available amount of electric energy distributed by the Total Electric Utility Industry+ for the week ended Saturday, Jan 24, 2009 was 81,621 gigawatthours (GWh), according to the Edison Electric Institute. This is equivalent to 186 on the weekly electric output index.

WEEKLY ELECTRIC OUTPUT BY GEOGRAPHIC DIVISION
(48 CONTIGUOUS STATES)

	Week Ended January 24		52 Weeks Ended January 24	
	GWh Output	% Increase Over Corresponding Week of 2008	GWh Output	% Increase Over Corresponding Period of 2008
New England	2,693	-1.6	130,937	-2.6
Mid-Atlantic	9,313	-0.7	452,370	-1.6
Central Industrial	15,196	-3.5	707,607	-2.3
West Central	6,894	-6.3	344,810	-2.4
Southeast	23,050	-3.3	1,087,805	-2.2
South Central	10,318	-15.1	597,564	-0.1
Rocky Mountain	4,790	-9.2	275,536	-1.1
Pacific Northwest	4,104	-3.2	167,080	4.3
Pacific Southwest	5,263	-7.7	291,267	0.4
Total United States	81,621	-5.6	4,054,977	-1.4

WEEKLY ELECTRIC OUTPUT IN PREVIOUS WEEKS--GWh

Week Ended	2009	Week Ended	2008	% Inc. (09/08)	52 Weeks Ended	2009	% Inc. (09/08)
Jan 03	72,665	Jan 05	79,986	-9.2	Jan 03	4,055,395	-1.3
Jan 10	77,282	Jan 12	75,302	2.6	Jan 10	4,057,375	-1.2
Jan 17	83,772	Jan 19	81,351	3.0	Jan 17	4,059,797	-1.1
Jan 24	81,621	Jan 26	86,441	-5.6	Jan 24	4,054,977	-1.4
Jan 24	315,340	Jan 26	323,080	-2.4	YEAR TO DATE, FIRST 4 WEEKS		

WEEKLY ELECTRIC OUTPUT INDEX--TOTAL U.S.*
SEASONALLY ADJUSTED 1982 = 100

Week Ended	2009	Week Ended	2008	Week Ended	2007
Jan 03	176	Jan 05	192	Jan 06	171
Jan 10	181	Jan 12	174	Jan 13	172
Jan 17	191	Jan 19	183	Jan 20	179
Jan 24	186	Jan 26	195	Jan 27	179

* Excludes Alaska and Hawaii.

+ Includes investor-owned companies, cooperatives and government-owned utilities.

Copyright © 2009 Edison Electric Institute. All rights reserved.

WEEKLY ELECTRIC OUTPUT BY GEOGRAPHIC DIVISION (48 CONTIGUOUS STATES)

	Week Ended			NMA CUMULATIVE JANUARY WEEK ONE TO			52 Weeks Ended		
	24-Jan 2009 GWh Output	26-Jan 2008 GWh Output	% Increase Over Corresponding Week of 2008	24-Jan 2009 GWh Output	26-Jan 2008 GWh Output	% Increase Over Corresponding Week of 2008	24-Jan 2009 GWh Output	26-Jan 2008 GWh Output	% Increase Over Corresponding Week of 2008
New England	2,693	2,737	-1.6%	10,679	10,534	1.4%	130,937	134,485	-2.6%
Mid-Atlantic	9,313	9,380	-0.7%	36,480	35,149	3.8%	452,370	459,788	-1.6%
Central Industrial	15,196	15,752	-3.5%	57,184	58,118	-1.6%	707,607	724,291	-2.3%
West Central	6,894	7,360	-6.3%	27,112	27,739	-2.3%	344,810	353,433	-2.4%
Southeast	23,050	23,849	-3.4%	85,499	87,948	-2.8%	1,087,805	1,112,584	-2.2%
South Central	10,318	12,147	-15.1%	41,918	45,437	-7.7%	597,564	598,066	-0.1%
Rocky Mountain	4,790	5,272	-9.1%	19,970	20,921	-4.5%	275,536	278,482	-1.1%
Pacific Northwest	4,104	4,241	-3.2%	15,659	16,255	-3.7%	167,080	160,241	4.3%
Pacific Southwest	5,263	5,703	-7.7%	20,839	20,979	-0.7%	291,267	290,246	0.4%
Total United States *	81,621	86,441	-5.6%	315,340	323,080	-2.4%	4,054,976	4,111,616	-1.4%

Notes: EEI output data are an estimate of electricity load made available for distribution derived as weekly net generation + purchases from non-utilities + net imports - exports - sales for resale. It is not meant to be a measure of electricity generation for the U.S. EEI survey data represent the majority of national distribution (large utilities, large government power projects, some independent and large municipal power projects). The remaining segment of the industry (smaller producers) is estimated. Non-utility generation is captured via direct sales to utilities.

* Excludes Alaska and Hawaii

SOURCE: Edison Electric Institute (EEI), *Weekly Electric Output Report*.

AMERICAN IRON AND STEEL INSTITUTE
 1140 Connecticut Avenue, Suite 705
 Washington, D.C. 20036

January 26, 2009

ESTIMATED WEEKLY RAW STEEL * PRODUCTION

Period	Thousand Net Tons	Percent Change from Previous Period	Percent Capability Utilization**	Production by District		
				Week Ending		
				Jan. 24	Jan. 17	
Week Ending				North East Coast	88	91
January 24, 2009	1,025	-2.0	43.1	Pgh/Youngstown	71	78
January 24, 2008	2,154	-52.5	90.3	Lake Erie	23	33
January 17, 2009	1,045	-1.6	43.8	Detroit	24	26
				Indiana/Chicago	309	307
				Midwest	104	107
				Southern	368	362
				Western	41	41
				Total	1,028	1,045
Year-to-Date+						
January 24, 2009	3,504	-52.6	42.7			
January 24, 2008	7,383	-	90.3			

*Raw steel production tonnage included in this report is estimated based on a sampling of steel producers. Therefore, this report should be used primarily to assess production trends. The AISI production report "AISI 7," produced monthly and available by subscription, provides a more accurate summary of steel production based on data supplied by companies representing approximately 75% of U.S. production capacity.

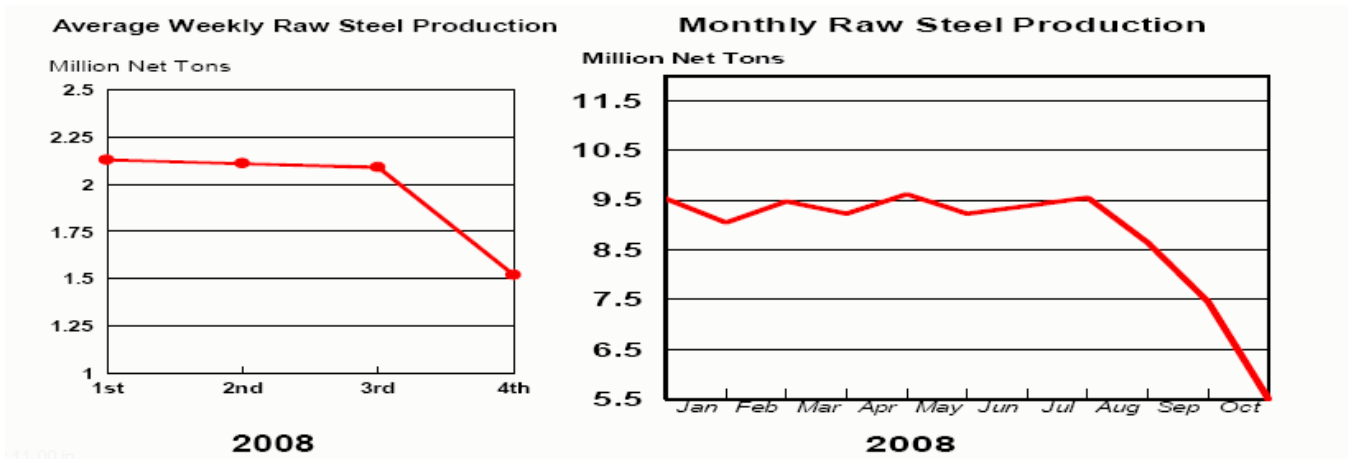
+ Includes revisions for previous months

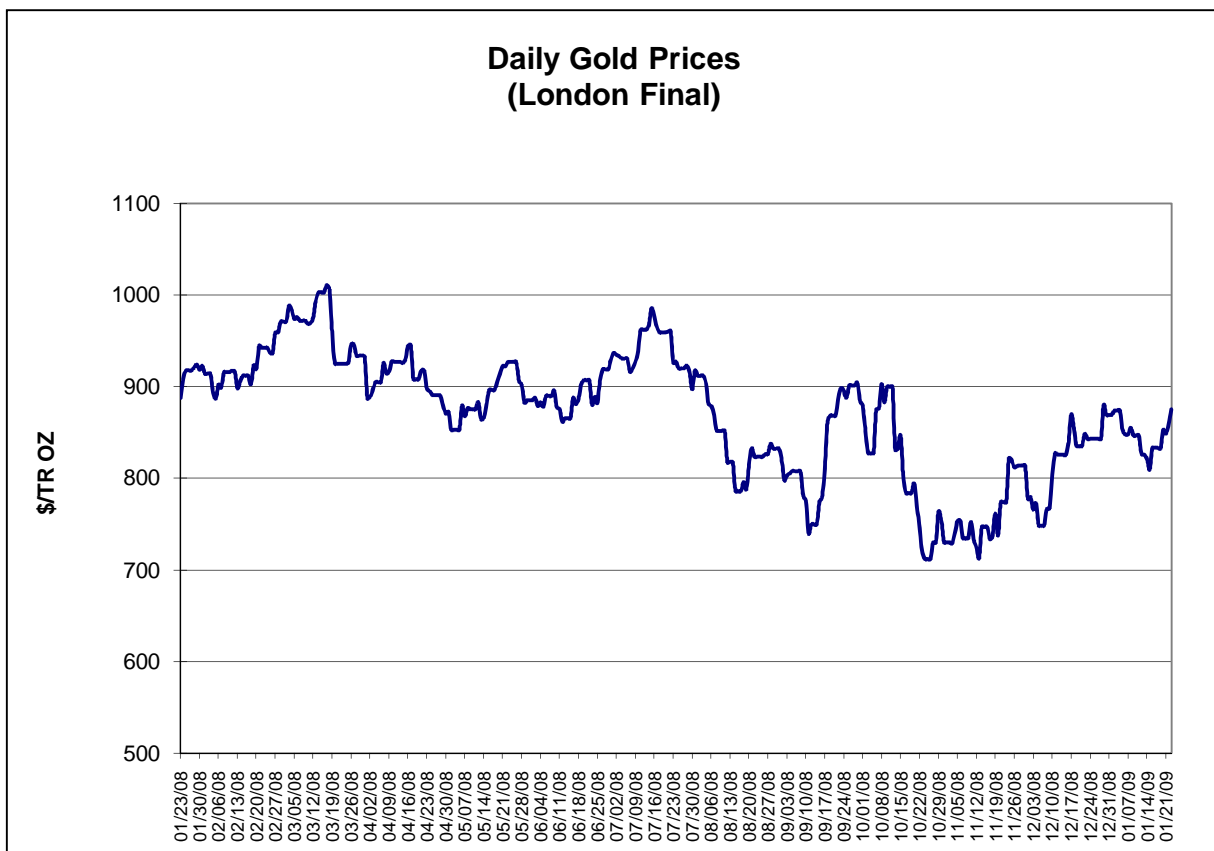
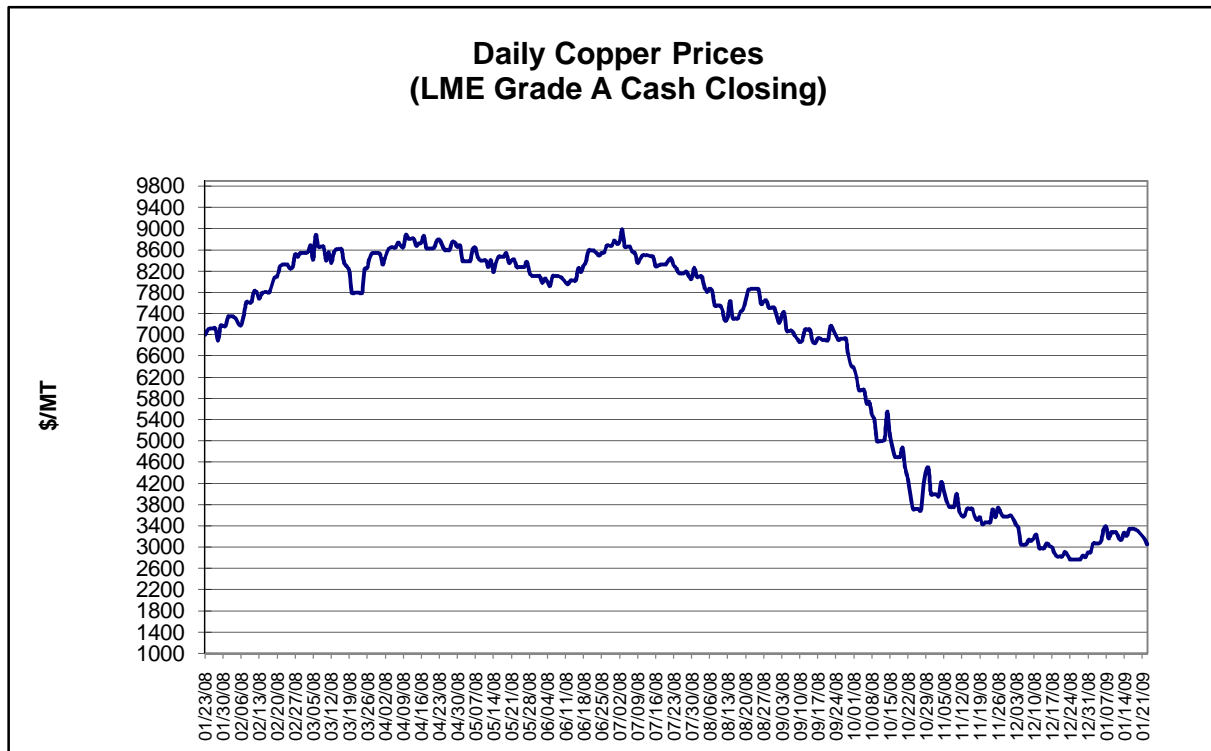
NOTE: Capability for the Third Quarter 2008 is approximately 31.4 million net tons vs 30.1 million net tons for the same period last year, and 31.0 million tons for the second quarter of 2008.

Capability -	2004 approx.	2.2 million tons/week
	2005	2.3
	2006	2.4
	2007	2.4
	2008	2.4

*Steel in the first solid state after melting suitable for further processing or sale, including ingots, steel for castings and strand or pressure cast blooms, slabs, or other product forms.

** Based on tonnage capability to produce raw steel for a sustained full order book.

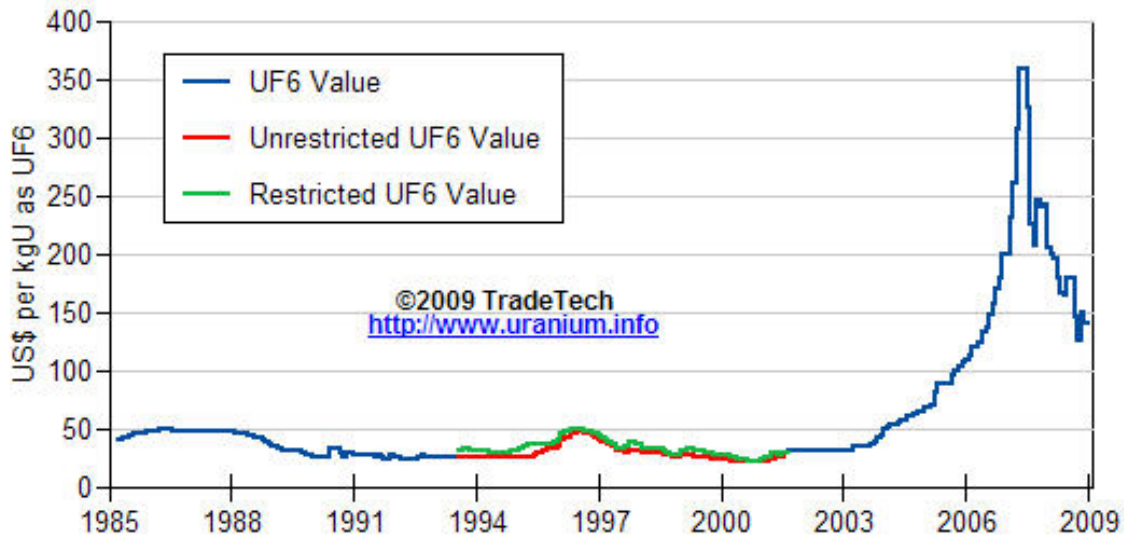




Data reflect closings on weekends and holidays.

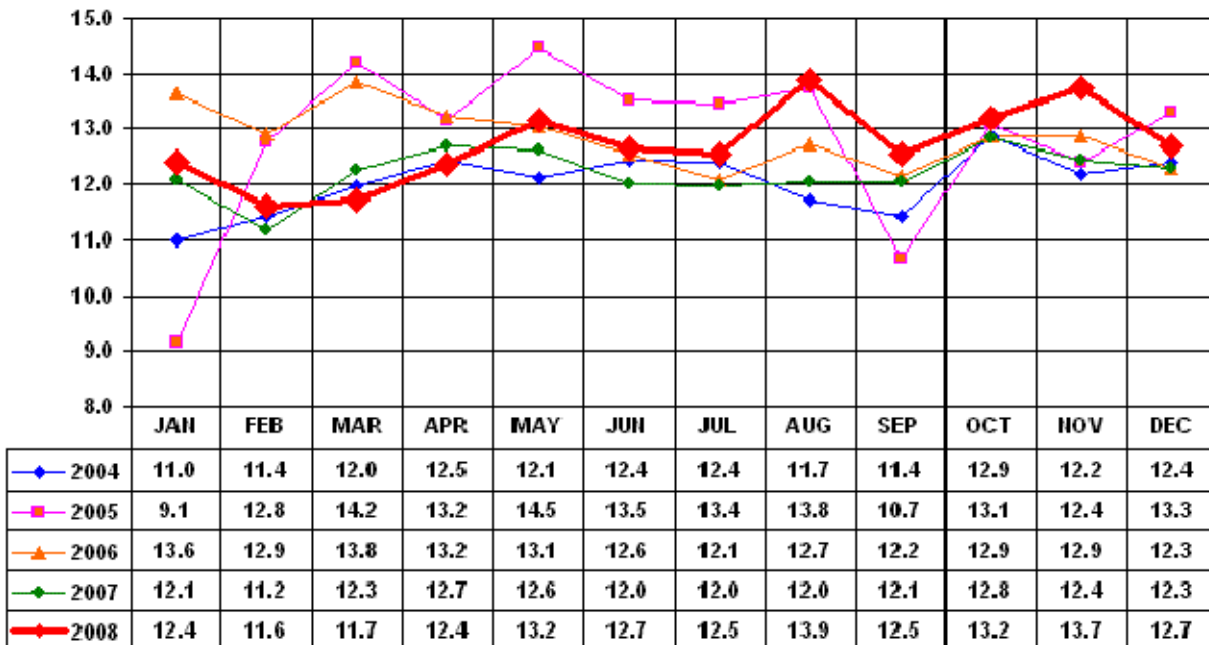
Source: Platts Metals Week

Trade Tech's Uranium (UF6) Monthly Spot Prices (US\$/kg as UF6)



Source: Trade Tech, Uranium Info Website – <http://www.uranium.info>

Coal and Coke Monthly Tonnage Indicator for Internal U.S. Waterways

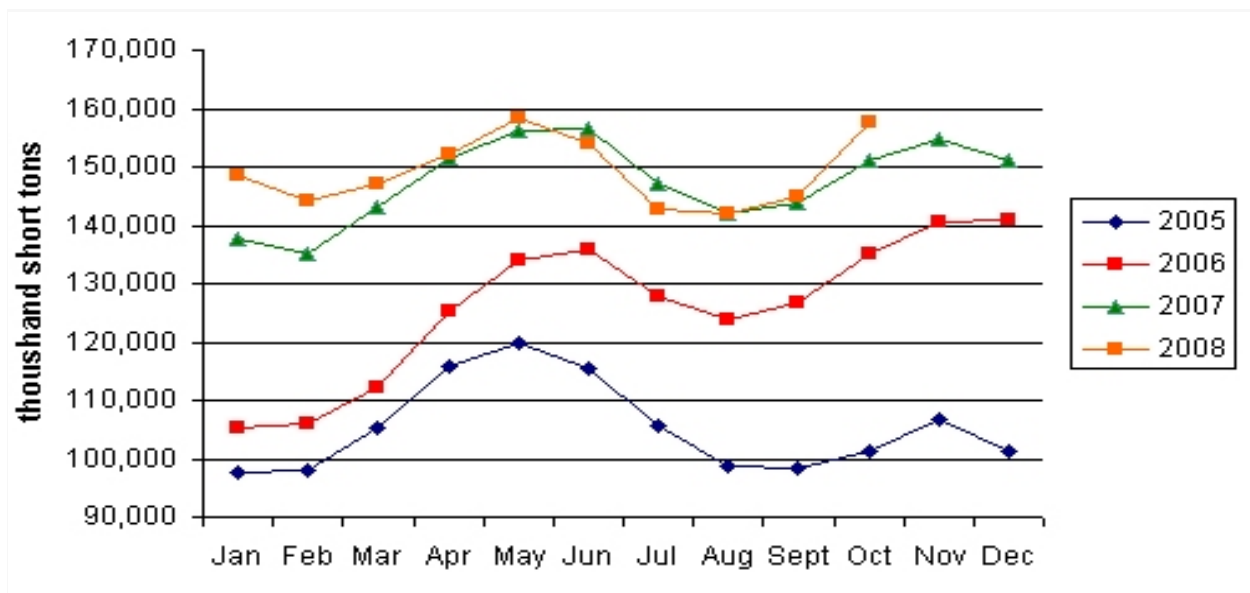


Source: U.S. Army Corps of Engineers, Waterborne Commerce Statistics Center

Average Weekly Coal Commodity Spot Prices (Dollars per Short Ton)					
Week Ended	Central Appalachia 12,500 Btu, 1.2 SO2	Northern Appalachia 13,000 Btu, <3.0 SO2	Illinois Basin 11,800 Btu, 5.0 SO2	Powder River Basin 8,800 Btu, 0.8 SO2	Uinta Basin 11,700 Btu, 0.8 SO2
12/05/08	\$89.80	\$101.50	\$78.00	\$12.50	\$73.00
12/12/08	\$81.55	\$101.50	\$78.00	\$12.50	\$73.00
12/19/08	\$81.55	\$101.50	\$78.00	\$13.00	\$73.00
1/2/09	\$80.85	\$88.75	\$78.00	\$13.00	\$73.00
1/9/09	\$76.80	\$76.00	\$78.00	\$13.00	\$73.00
1/16/09	\$66.45	\$76.00	\$60.00	\$13.00	\$73.00
1/23/09	\$66.45	\$69.00	\$60.00	\$13.00	\$73.00

Source: Energy Information Administration (from Platts *Coal Outlook*, "Weekly Price Survey")

EIA Electric Power Sector Coal Stocks



Source: Energy Information Administration, *Coal News and Markets Report*

USGS Production of Selected Mineral Commodities	2008 Year to Date - 3rd Quarter	2007 Year to Date - 3rd Quarter	Percent Change
Aluminum, secondary (000 Mt.)	729.0	708.0	3%
Cement (Mil. Mt.)	65.6	70.0	-6%
Gypsum (Mil. Mt.)	14.1	16.4	-14%
Iron Ore (Mil. Mt.)	40.9	38.6	6%
Phosphate rock (Mil. Mt.)	23.0	22.1	4%
Sand & gravel, construction (Mil. Mt.)	754.0	940.0	-20%
Soda ash (Mil. Mt.)	8.4	8.3	1%
Stone, crushed (Mil. Mt.)	1,020.0	1,220.0	-16%
Zinc (000 Mt.)	628.0	574.0	9%

Source: U.S. Geological Survey, Mineral Industry Surveys, *U.S. Production of Selected Mineral Commodities in the Third Quarter 2008, November 2008*

AAR U.S. Rail Traffic for Selected Commodities - Carloadings (000)	2008 Year to Date - Dec. 27	2007 Year to Date - Dec. 27	Percent Change
Agricultural Products	2,161	2,151	0.5%
Chemicals	1,850	1,903	-2.8%
Coal	7,466	7,215	3.5%
Forest Products	657	743	-11.6%
Metallic Ores & Metals	1,169	1,291	-9.5%
Motor Vehicles & Equipment	814	1,034	-21.3%
Non-metallic Minerals & Products	1,693	1,853	-8.6%

Source: Association of American Rainroads, *Weekly Railroad Traffic*