
National Mining Association

Weekly Statistical Summary

January 4, 2008 Edition
(Data for Week Ending December 29, 2007)

Prepared by
National Mining Association



Suite 500 East, 101 Constitution Avenue, NW
Washington, DC, 20001
Phone (202) 463-2600
Visit us at <http://www.nma.org>

NMA Weekly Statistical Summary

Vol. 45, No. 52
Dated 01/04/08

PRODUCTION, CONSUMPTION & TRADE						
	Week Ended			Cumulative Jan 1 to		
	12/29/07	12/30/06	% Chng	12/29/07	12/30/06	% Chng
EIA Coal Production (000 Tons):						
Week Ended/Year to Date	19,941	20,430	-2.4%	1,142,552	1,158,547	-1.4%
52 Weeks Ended	1,144,278	1,161,024	-1.4%			
Month Ended -- November						
	November 07/06		% Chng	Jan - Nov 07/06		% Chng
	98,244	96,526	1.8%	1,056,389	1,066,687	-1.0%
MONTH ENDED AND CUMULATIVE NUMBERS ARE PRELIMINARY AND SUBJECT TO CHANGE						
DOC Bituminous Coal Trade (000 Tons)						
Exports:	October 07/06			Jan - Oct 07/06		
			% Chng			% Chng
Metallurgical	2,575	2,297	12.1%	26,432	22,796	16.0%
Steam	2,319	1,548	49.8%	20,155	17,602	14.5%
Imports:	2,896	3,214	-9.9%	30,646	30,527	0.4%
EI Electric Output (Mil. Kwh)						
	Week Ended			Cumulative Jan 1 to		
	12/29/07	12/30/06	% Chng	12/29/07	12/30/06	% Chng
EI Electric Output (Mil. Kwh)	74,832	72,033	3.9%	4,100,612	3,988,868	2.8%
AISI Raw Steel Output (000 Tons)	2,041	1,733	17.8%	106,473	108,253	-1.6%
EIA U.S. PETROLEUM DATA						
4-Week Averages 000 Barrels per Day						
PETROLEUM SUPPLY:						
	Week Ending			Cumulative Daily Averages		
	12/28/07	12/28/06	% Chng	2007	2006	% Chng
Domestic Crude	5,106	5,164	-1.1	5,118	5,101	0.3
Net Imports (Incl. SPR)	9,722	9,540	1.9	9,974	10,091	-1.2
SPR Stocks W/D or Added	-35	0	--	-22	-11	--
Other Stocks W/D or added	559	697	--	79	24	--
Natural Gas Liquids Prod.	2,390	2,416	-1.1	2,387	2,238	6.7



NMA
THE AMERICAN RESOURCE

National Mining Association Web Site: [http:// www.nma.org](http://www.nma.org)

EIA Estimated Weekly U.S. Coal Production Overview (Thousand Short Tons)

Coal-Producing Region and State	Week Ended			Year to Date			52 Weeks Ended		
	12/29/2007	12/22/2007	12/30/2006	12/29/2007	12/29/2006	Percent Change	12/29/2007	12/30/2006	Percent Change
Alabama	311	365	261	19,118	18,977	0.7	19,119	19,020	0.5
Alaska	18	22	25	1,312	1,425	-7.9	1,312	1,425	-7.9
Arizona	119	140	123	7,838	8,201	-4.4	7,838	8,216	-4.6
Arkansas	2	2	2	80	22	259.4	80	23	253.9
Colorado	603	707	591	36,395	36,184	0.6	36,465	36,252	0.6
Illinois	541	635	550	34,011	32,664	4.1	34,037	32,702	4.1
Indiana	603	708	581	35,717	35,020	2.0	35,739	35,097	1.8
Kansas	7	9	15	439	423	3.8	439	426	3.1
Kentucky Total	1,930	2,265	1,876	115,030	120,916	-4.9	115,082	121,076	-5.0
Eastern	1,422	1,669	1,434	86,244	93,713	-8.0	86,271	93,829	-8.1
Western	508	596	442	28,786	27,203	5.8	28,810	27,247	5.7
Louisiana	76	91	93	3,109	4,096	-24.1	3,117	4,106	-24.1
Maryland	35	41	45	2,580	5,052	-48.9	2,581	5,053	-48.9
Mississippi	72	72	75	3,612	3,780	-4.4	3,618	3,791	-4.6
Missouri	4	4	4	232	394	-41.1	232	394	-41.2
Montana	739	867	701	41,956	41,644	0.7	42,048	41,731	0.8
New Mexico	395	464	441	24,312	25,843	-5.9	24,322	25,903	-6.1
North Dakota	495	581	526	29,418	30,328	-3.0	29,418	30,411	-3.3
Ohio	390	458	349	22,103	22,657	-2.4	22,117	22,708	-2.6
Oklahoma	31	37	29	1,728	1,995	-13.4	1,728	1,998	-13.5
Pennsylvania Total	1,050	1,233	1,068	65,015	66,027	-1.5	65,034	66,158	-1.7
Anthracite	27	31	30	1,554	1,535	1.3	1,554	1,538	1.1
Bituminous	1,024	1,202	1,038	63,461	64,492	-1.6	63,480	64,621	-1.8
Tennessee	41	48	41	2,587	2,803	-7.7	2,587	2,804	-7.8
Texas	714	838	738	41,839	45,342	-7.7	41,936	45,451	-7.7
Utah	372	436	445	23,512	25,981	-9.5	23,525	26,005	-9.5
Virginia	415	487	441	26,775	29,809	-10.2	26,794	29,853	-10.2
Washington	0	0	0	0	2,580	-100.0	s	2,580	-100.0
West Virginia Total	2,519	2,957	2,373	153,693	152,029	1.1	153,784	152,282	1.0
Northern	742	871	625	44,253	42,348	4.5	44,276	42,375	4.5
Southern	1,777	2,086	1,748	109,440	109,681	-0.2	109,508	109,907	-0.4
Wyoming	8,460	8,565	9,038	450,140	444,357	1.3	451,326	445,556	1.3
Appalachian Total	6,183	7,258	6,011	378,114	391,066	-3.3	378,287	391,708	-3.4
Interior Total	2,557	2,992	2,528	149,555	150,938	-0.9	149,737	151,237	-1.0
Western Total	11,201	11,782	11,890	614,884	616,542	-0.3	616,254	618,079	-0.3
East of Miss. River	7,907	9,269	7,659	480,240	489,732	-1.9	480,492	490,546	-2.0
West of Miss. River	12,034	12,763	12,770	662,312	668,815	-1.0	663,786	670,478	-1.0
Bituminous and Lignite	19,915	22,001	20,400	1,140,998	1,157,013	-1.4	1,142,724	1,159,486	-1.4
Anthracite	27	31	30	1,554	1,535	1.3	1,554	1,538	1.1
U.S. Total	19,941	22,032	20,430	1,142,552	1,158,547	-1.4	1,144,278	1,161,024	-1.4
Railroad Cars Loaded	122,168	140,141	126,415	7,404,032	7,455,357	-0.7	7,404,032	7,455,357	-0.7

Source: Energy Information Administration


WEEKLY ELECTRIC OUTPUT
Essential Energy Information from EEI's Statistics Department
Volume 75 No. 52
OUTPUT FOR WEEK ENDED - Dec 29, 2007
Jan 03, 2008

The net available amount of electric energy distributed by the Total Electric Utility Industry+ for the week ended Saturday, Dec 29, 2007 was **74,832** gigawatthours (GWh), according to the Edison Electric Institute. This is equivalent to **175** on the weekly electric output index.

WEEKLY ELECTRIC OUTPUT BY GEOGRAPHIC DIVISION

(48 CONTIGUOUS STATES)

	Week Ended December 29		52 Weeks Ended December 29	
	GWh Output	% Increase Over Corresponding Week of 2006	GWh Output	% Increase Over Corresponding Period of 2006
New England	2,477	1.1	134,446	2.0
Mid-Atlantic	8,220	2.9	458,670	3.4
Central Industrial	12,708	2.1	722,139	3.9
West Central	6,369	5.1	352,217	2.3
Southeast	19,655	3.0	1,106,658	3.2
South Central	10,938	5.9	598,137	0.0
Rocky Mountain	5,423	10.5	277,430	6.4
Pacific Northwest	3,890	7.9	159,077	5.1
Pacific Southwest	5,152	-0.4	291,839	0.0
Total United States	74,832	3.9	4,100,612	2.8

WEEKLY ELECTRIC OUTPUT IN PREVIOUS WEEKS--GWh

Week Ended	2007	Week Ended	2006	% Inc. (07/06)	52 Weeks Ended	2007	% Inc. (07/06)
Dec 08	79,689	Dec 09	81,668	-2.4	Dec 08	4,088,009	2.2
Dec 15	79,780	Dec 16	75,777	5.3	Dec 15	4,092,013	2.5
Dec 22	80,631	Dec 23	74,830	7.8	Dec 22	4,097,814	2.8
Dec 29	74,832	Dec 30	72,033	3.9	Dec 29	4,100,612	2.8
Dec 29	4,100,612	Dec 30	3,988,868	2.8	YEAR END TOTALS (52 WEEKS)		

WEEKLY ELECTRIC OUTPUT INDEX--TOTAL U.S.*
SEASONALLY ADJUSTED 1982 = 100

Week Ended	2007	Week Ended	2006	Week Ended	2005
Dec 08	184	Dec 09	192	Dec 10	186
Dec 15	180	Dec 16	173	Dec 17	185
Dec 22	180	Dec 23	170	Dec 24	191
Dec 29	175	Dec 30	169	Dec 31	167

* Excludes Alaska and Hawaii.

+ Includes investor-owned companies, cooperatives and government-owned utilities.

Copyright © 2008 Edison Electric Institute. All rights reserved.

WEEKLY ELECTRIC OUTPUT BY GEOGRAPHIC DIVISION (48 CONTIGUOUS STATES)

	Week Ended			NMA CUMULATIVE JANUARY 1 to			52 Weeks Ended		
	29-Dec	30-Dec	% Increase Over Corresponding Week of 2006	29-Dec	30-Dec	% Increase Over Corresponding Week of 2006	29-Dec	30-Dec	% Increase Over Corresponding Week of 2006
	2007	2006		2007	2006		2007	2006	
	GWh Output	GWh Output		GWh Output	GWh Output		GWh Output	GWh Output	
New England	2,477	2,451	1.1%	134,445	131,824	2.0%	134,446	131,823	2.0%
Mid-Atlantic	8,220	7,989	2.9%	458,669	443,750	3.4%	458,670	443,751	3.4%
Central Industrial	12,708	12,445	2.1%	722,138	694,884	3.9%	722,139	694,886	3.9%
West Central	6,369	6,062	5.1%	352,217	344,151	2.3%	352,217	344,150	2.3%
Southeast	19,655	19,077	3.0%	1,106,657	1,072,092	3.2%	1,106,658	1,072,090	3.2%
South Central	10,938	10,326	5.9%	598,137	598,370	0.0%	598,137	598,369	0.0%
Rocky Mountain	5,423	4,907	10.5%	277,428	260,621	6.4%	277,430	260,620	6.5%
Pacific Northwest	3,890	3,605	7.9%	159,080	151,375	5.1%	159,077	151,374	5.1%
Pacific Southwest	<u>5,152</u>	<u>5,171</u>	-0.4%	<u>291,841</u>	<u>291,803</u>	0.0%	<u>291,839</u>	<u>291,804</u>	0.0%
Total United States *	74,832	72,033	3.9%	4,100,612	3,988,870	2.8%	4,100,613	3,988,867	2.8%

Notes: EEI output data are an estimate of electricity load made available for distribution derived as weekly net generation + purchases from non-utilities + net imports - exports - sales for resale. It is not meant to be a measure of electricity generation for the U.S. EEI survey data represent the majority of national distribution (large utilities, large government power projects, some independent and large municipal power projects). The remaining segment of the industry (smaller producers) is estimated. Non-utility generation is captured via direct sales to utilities.

* Excludes Alaska and Hawaii

** Less than one-tenth of one percent

SOURCE: Edison Electric Institute (EEI), *Weekly Electric Output Report*.

AMERICAN IRON AND STEEL INSTITUTE
 1140 Connecticut Avenue, Suite 705
 Washington, D.C. 20036

December 31, 2007

ESTIMATED WEEKLY RAW STEEL* PRODUCTION

<u>Period</u>	Thousand <u>Net Tons</u>	Percent Change from Previous <u>Period</u>	Percent Capability <u>Utilization**</u>	<u>Production by District</u>		
				<u>Week Ending</u>		
				<u>Dec 29</u>	<u>Dec 22</u>	
<u>Week Ending</u>						
				North East Coast	154	143
				Pgh/Youngstown	183	170
				Lake Erie	107	101
				Detroit	119	126
				Indiana/Chicago	538	546
				Midwest	257	256
				Southern	595	656
				Western	<u>87</u>	<u>83</u>
				Total	2040	2081
<u>Year-to-Date+</u>						
Dec 29, 2007	2,041	-1.9	85.6			
Dec 29, 2006	1,733	17.7	75.0			
Dec 22, 2007	2,081	1.1	87.2			
Dec 29, 2007	106,473	-1.6	86.1			
Dec 29, 2006	108,253	-	87.5			

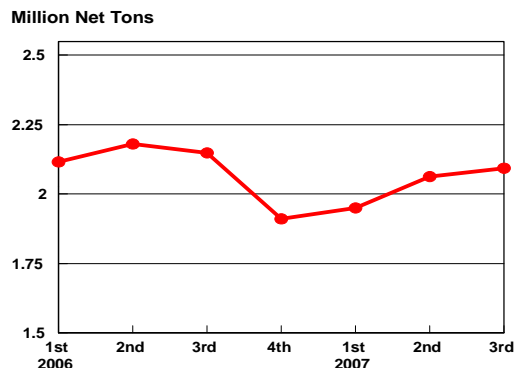
*Raw steel production tonnage included in this report is estimated based on a sampling of steel producers. Therefore, this report should be used primarily to assess production trends. The AISI production report "AIS 7," produced monthly and available by subscription, provides a more accurate summary of steel production based on data supplied by companies representing approximately 75% of U.S. production capacity.

+Includes revisions for previous months

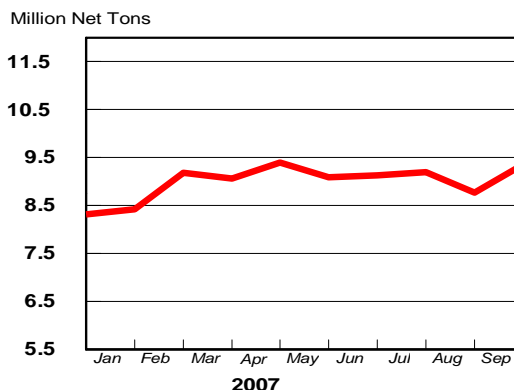
NOTE: Capability for the Fourth Quarter 2007 is approximately 31.3 million net tons vs 30.7 million net tons for the same period last year, and 30.1 million tons for the third quarter of 2007.

Capability -	2003 approx.	2.3 million tons/week
	2004	2.2
	2005	2.3
	2006	2.4
	2007	2.4

Average Weekly Raw Steel Production

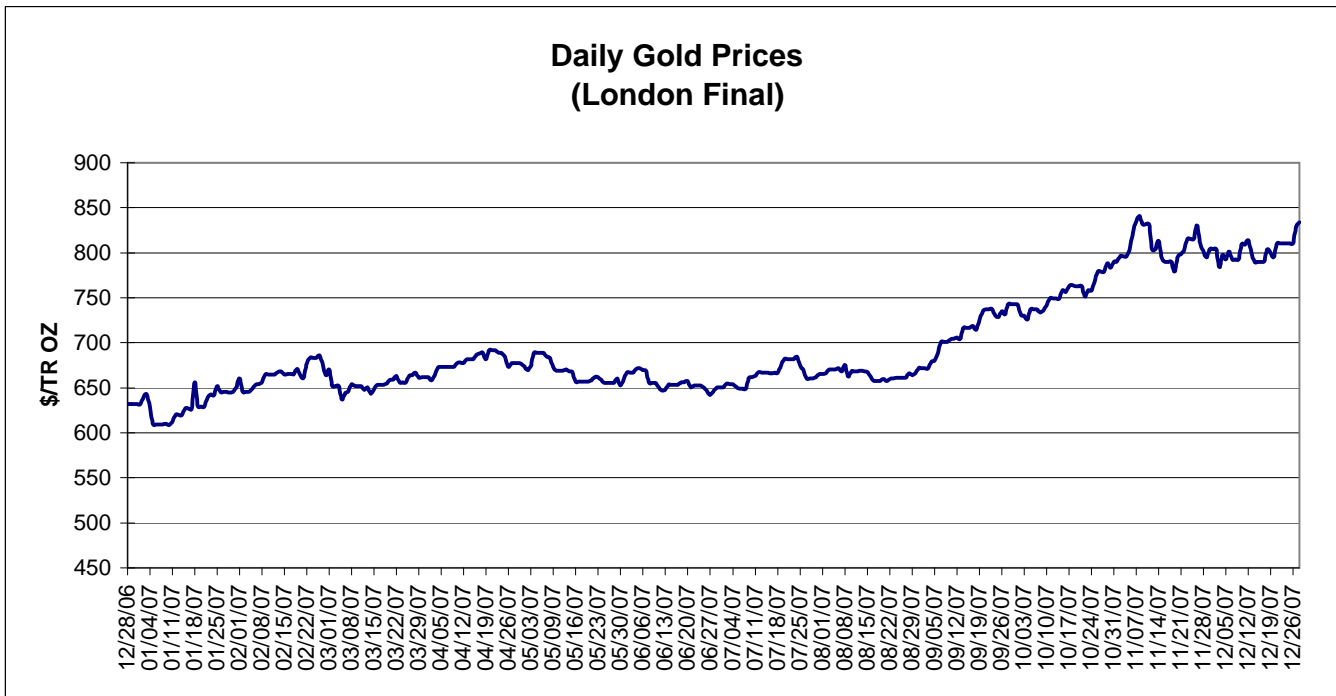
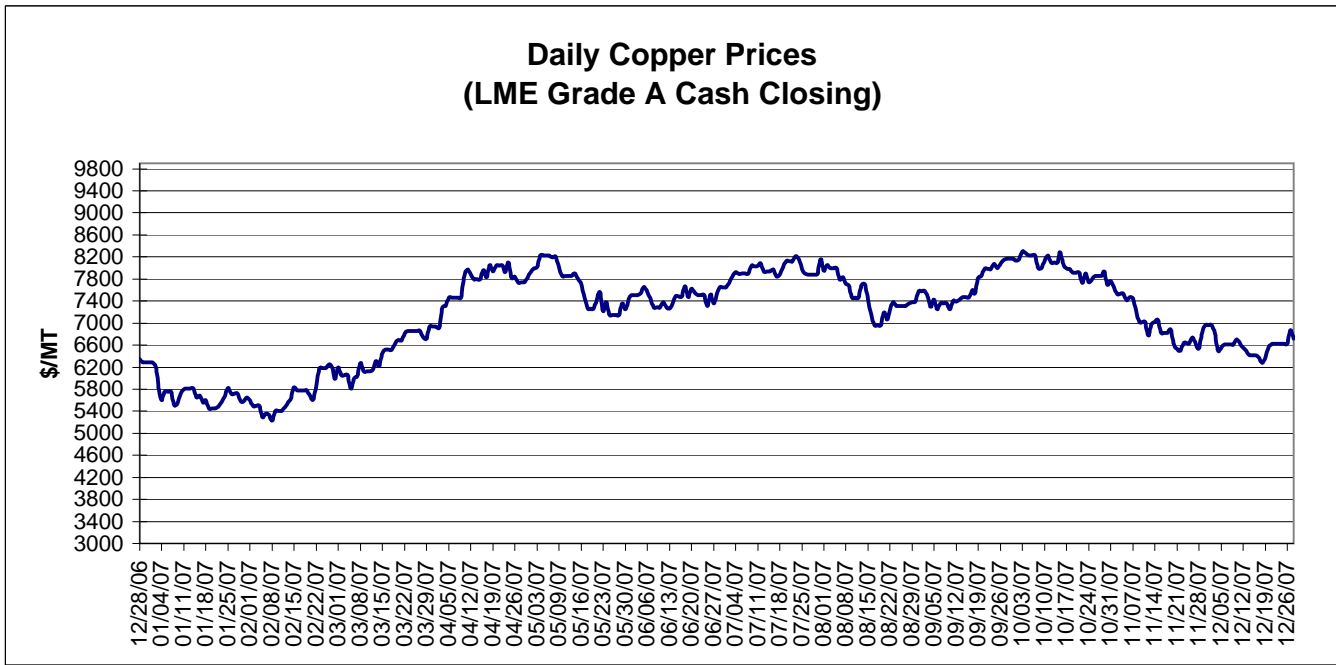


MONTHLY RAW STEEL PRODUCTION



*Steel in the first solid state after melting suitable for further processing or sale, including ingots, steel for castings and strand or pressure cast blooms, slabs, or other product forms.

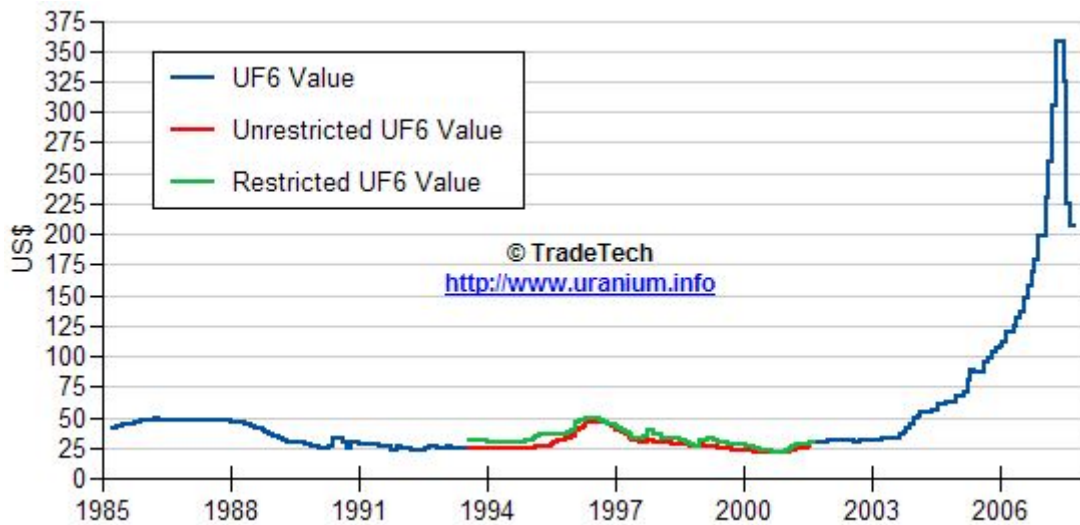
** Based on tonnage capability to produce raw steel for a sustained full order book.



Data reflect closings on weekends and holidays.

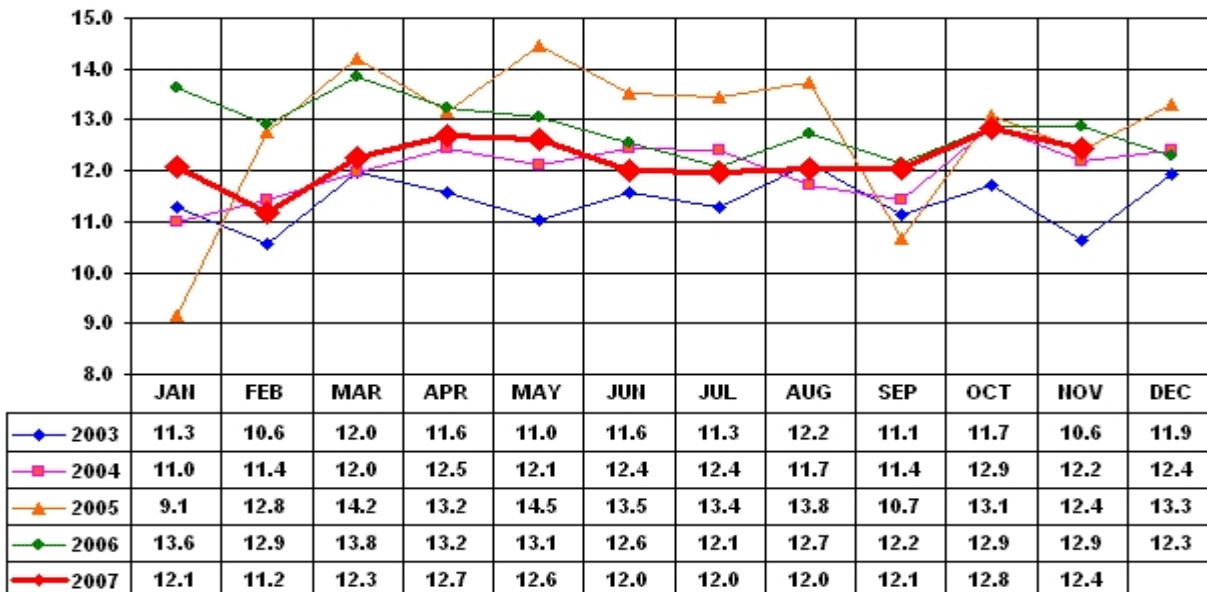
Source: Platts Metals Week

Trade Tech's Uranium (UF6) Monthly Spot Prices (US\$/kg as UF6)



Source: Trade Tech, Uranium Info Website – <http://www.uranium.info>

Coal and Coke Monthly Tonnage Indicator for Internal U.S. Waterways



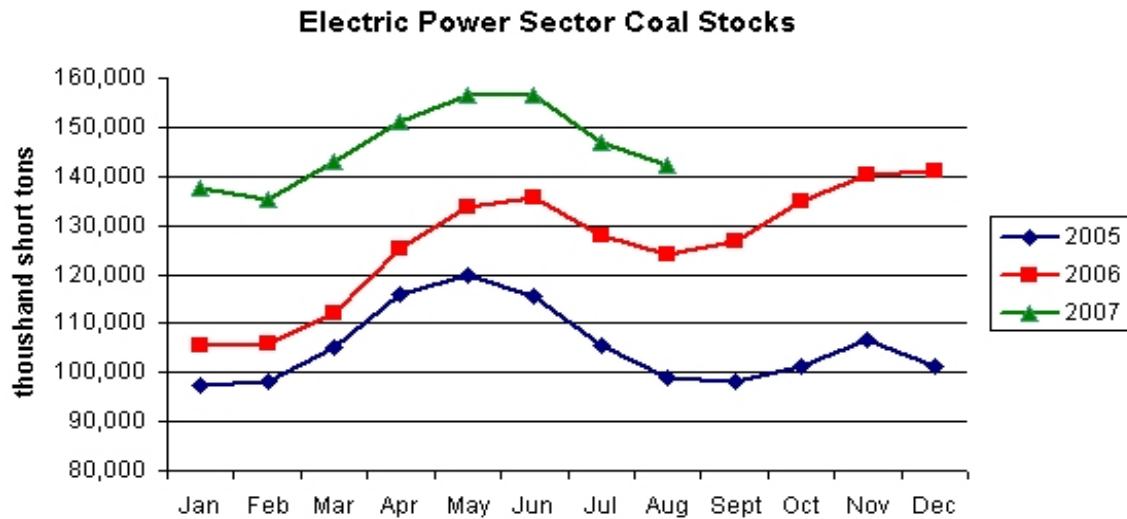
Source: U.S. Army Corps of engineers, Waterborne Commerce Statistics Center

EIA Weekly Spot Coal Prices

The following average spot coal prices appear in the graphic below, for the previous and most recent weeks:

Week Ended	Central Appalachia 12,500 Btu, 1.2 SO2	Northern Appalachia 13,000 Btu, <3.0 SO2	Illinois Basin 11,800 Btu, 5.0 SO2	Powder River Basin 8,800 Btu, 0.8 SO2	Uinta Basin 11,700 Btu, 0.8 SO2
23-Nov-07	\$52.95	\$55.25	\$33.50	\$11.05	\$24.00
30-Nov-07	\$56.80	\$55.25	\$33.50	\$11.15	\$24.00
07-Dec-07	\$57.70	\$55.25	\$33.50	\$11.50	\$24.00
14-Dec-07	\$57.70	\$55.25	\$33.50	\$11.50	\$24.00
21-Dec-07	\$57.70	\$55.25	\$33.50	\$11.50	\$24.00

Source: Energy Information Administration (from Platts *Coal Outlook*, "Weekly Price Survey")



Source: Energy Information Administration