

---

National Mining Association

# Weekly Statistical Summary

January 9, 2009 Edition  
(Data for Week Ending January 3, 2009)

Prepared by  
National Mining Association



Suite 500 East, 101 Constitution Avenue, NW  
Washington, DC, 20001  
Phone (202) 463-2600  
Visit us at <http://www.nma.org>

# NMA Weekly Statistical Summary

Vol. 47, No. 1  
Dated 01/09/09

PRODUCTION, CONSUMPTION & TRADE						
	Week Ended			* Cumulative Jan 1 to		
	01/03/09	01/05/08	% Chng	01/03/09	01/03/08	% Chng
<b>EIA Coal Production (000 Tons):</b>						
Week Ended/Year to Date	21,732	21,094	3.0%	8,260	9,242	-10.6%
52 Weeks Ended	1,162,907	1,142,962	1.7%			
* Due to leap year, 2008 cumulative reflects one extra day of tonnage.						
Month Ended -- December	December 08/07			Jan - Dec 08/07		
	99,271	93,138	6.6%	1,170,188	1,146,635	2.1%
MONTH ENDED AND CUMULATIVE NUMBERS ARE PRELIMINARY AND SUBJECT TO CHANGE						
<b>DOC Bituminous Coal Trade (000 Tons)</b>						
Exports:	Oct 08/07			Jan - Oct 08/07		
	4,494	2,575	74.5%	36,727	26,432	38.9%
Metallurgical						
Steam	3,827	2,319	65.0%	30,367	20,155	50.7%
Imports:	2,921	2,896	0.9%	28,028	30,646	-8.5%
	Week Ended			* Cumulative Jan 1 to		
	01/03/09	01/05/08	% Chng	01/03/09	01/05/08	% Chng
<b>EEl Electric Output (Mil. Kwh)</b>	72,665	79,986	-9.2%	72,665	79,986	-9.2%
<b>AISI Raw Steel Output (000 Tons)</b>	866	2,128	-59.3%	866	2,128	-59.3%
Data not available for AISI Raw Steel						
EIA U.S. PETROLEUM DATA						
4-Week Averages						
000 Barrels per Day						
PETROLEUM SUPPLY:	Week Ending			Cumulative Daily Averages		
	01/02/09	01/02/08	% Chng	2008	2007	% Chng
Domestic Crude	4,963	5,057	-1.9			
Net Imports (Incl. SPR)	9,603	9,821	-2.2			
SPR Stocks W/D or Added	0	-46	--			
Other Stocks W/D or added	-166	406	--			
Natural Gas Liquids Prod.	2,385	2,451	-2.7			
Cumulative daily petroleum averages will be shown beginning with week ending April 3, 2009 data.						



**NMA**

THE AMERICAN RESOURCE National Mining Association Web Site: [http:// www.nma.org](http://www.nma.org)

## EIA Estimated Weekly U.S. Coal Production Overview (Thousand Short Tons)

Coal-Producing Region and State	Week Ended			Year to Date			52 Weeks Ended		
	1/3/2009	12/27/2008	1/5/2008	1/3/2009	1/3/2008	Percent Change	1/3/2009	1/5/2008	Percent Change
Alabama	378	316	350	142	148	-3.8	20,645	19,449	6.1
Alaska	25	21	22	6	11	-44.5	1,360	1,309	3.9
Arizona	147	123	142	50	64	-21.5	7,967	7,957	0.1
Arkansas	1	1	1	s	s	6.3	59	82	-28.9
Colorado	652	545	566	256	244	5.0	33,585	36,295	-7.5
Illinois	566	473	474	184	226	-18.4	31,790	32,581	-2.4
Indiana	683	571	581	251	251	0.2	35,878	34,870	2.9
Kansas	5	5	5	2	2	14.4	285	417	-31.6
Kentucky Total	2,096	1,752	1,965	686	906	-24.3	118,168	115,039	2.7
Eastern	1,563	1,306	1,491	500	693	-27.8	88,902	86,907	2.3
Western	533	445	474	186	213	-12.7	29,266	28,131	4.0
Louisiana	103	78	103	40	45	-11.4	3,921	3,145	24.7
Maryland	53	44	32	15	16	-7.4	2,554	2,287	11.7
Mississippi	59	32	73	25	32	-22.1	2,720	3,554	-23.5
Missouri	6	5	4	2	1	37.5	252	235	7.2
Montana	837	700	799	339	343	-1.1	44,054	43,346	1.6
New Mexico	579	484	333	210	134	56.4	27,549	24,323	13.3
North Dakota	555	464	480	204	199	2.9	29,468	29,449	0.1
Ohio	455	380	403	172	170	1.0	25,372	22,512	12.7
Oklahoma	33	28	26	11	11	-1.2	1,465	1,640	-10.6
Pennsylvania Total	1,164	973	1,085	409	478	-14.4	64,084	64,854	-1.2
Anthracite	20	17	24	7	10	-37.0	1,514	1,559	-2.9
Bituminous	1,144	956	1,061	403	468	-13.9	62,570	63,295	-1.1
Tennessee	49	41	43	13	21	-37.5	2,432	2,638	-7.8
Texas	711	594	664	303	272	11.1	38,313	41,818	-8.4
Utah	440	368	428	134	203	-33.9	23,633	24,222	-2.4
Virginia	490	409	356	169	164	2.7	24,713	25,259	-2.2
Washington	--	--	--	--	--	--	0	0	*
West Virginia Total	2,949	2,465	2,580	1,027	1,155	-11.0	158,440	152,847	3.7
Northern	766	641	633	230	300	-23.4	40,498	41,910	-3.4
Southern	2,183	1,825	1,947	798	855	-6.7	117,942	110,938	6.3
Wyoming	8,697	8,292	9,580	3,608	4,146	-13.0	464,201	452,834	2.5
<b>Appalachian Total</b>	<b>7,101</b>	<b>5,935</b>	<b>6,340</b>	<b>2,448</b>	<b>2,845</b>	<b>-14.0</b>	<b>387,143</b>	<b>376,753</b>	<b>2.8</b>
<b>Interior Total</b>	<b>2,699</b>	<b>2,230</b>	<b>2,404</b>	<b>1,004</b>	<b>1,054</b>	<b>-4.7</b>	<b>143,948</b>	<b>146,473</b>	<b>-1.7</b>
<b>Western Total</b>	<b>11,932</b>	<b>10,996</b>	<b>12,350</b>	<b>4,807</b>	<b>5,343</b>	<b>-10.0</b>	<b>631,817</b>	<b>619,736</b>	<b>1.9</b>
<b>East of Miss. River</b>	<b>8,941</b>	<b>7,456</b>	<b>7,942</b>	<b>3,094</b>	<b>3,567</b>	<b>-13.3</b>	<b>486,797</b>	<b>475,890</b>	<b>2.3</b>
<b>West of Miss. River</b>	<b>12,791</b>	<b>11,706</b>	<b>13,152</b>	<b>5,166</b>	<b>5,675</b>	<b>-9.0</b>	<b>676,111</b>	<b>667,072</b>	<b>1.4</b>
Bituminous and Lignite	21,712	19,144	21,070	8,253	9,231	-10.6	1,161,393	1,141,403	1.8
Anthracite	20	17	24	7	10	-37.0	1,514	1,559	-2.9
<b>U.S. Total</b>	<b>21,732</b>	<b>19,161</b>	<b>21,094</b>	<b>8,260</b>	<b>9,242</b>	<b>-10.6</b>	<b>1,162,907</b>	<b>1,142,962</b>	<b>1.7</b>
Railroad Cars Loaded	138,598	113,279	134,311	138,598	134,311	3.2	7,656,856	7,406,932	3.4

Source: Energy Information Administration

## EIA Estimated Monthly U.S. Coal Production Overview (Thousand Short Tons)

Coal-Producing Region and State	Week Ended		Year to Date		Month Ended		January - December		Percent Change
	1/3/2009	1/5/2008	1/3/2009	1/3/2008	December 2008	December 2007	2008	2007	
Alabama	378	350	142	148	1,722	1,553	20,782	19,522	6.5
Alaska	25	22	6	11	117	104	1,371	1,324	3.5
Arizona	147	142	50	64	676	589	8,031	7,983	0.6
Arkansas	1	1	s	s	5	8	59	83	-28.8
Colorado	652	566	256	244	2,891	2,929	33,728	36,384	-7.3
Illinois	566	474	184	226	2,588	2,120	31,967	32,857	-2.7
Indiana	683	581	251	251	3,098	2,743	36,070	35,003	3.0
Kansas	5	5	2	2	25	31	287	420	-31.8
<b>Kentucky Total</b>	<b>2,096</b>	<b>1,965</b>	<b>686</b>	<b>906</b>	<b>9,617</b>	<b>9,009</b>	<b>118,986</b>	<b>115,530</b>	<b>3.0</b>
Eastern	1,563	1,491	500	693	7,198	6,747	89,550	87,263	2.6
Western	533	474	186	213	2,420	2,262	29,435	28,267	4.1
Louisiana	103	103	40	45	394	372	3,953	3,127	26.4
Maryland	53	32	15	16	246	159	2,565	2,301	11.5
Mississippi	59	73	25	32	190	260	2,751	3,545	-22.4
Missouri	6	4	2	1	26	19	252	236	6.9
Montana	837	799	339	343	3,692	4,016	44,278	43,390	2.0
New Mexico	579	333	210	134	2,639	1,954	27,579	24,451	12.8
North Dakota	555	480	204	199	2,539	2,367	29,636	29,606	0.1
Ohio	455	403	172	170	2,058	1,919	25,506	22,575	13.0
Oklahoma	33	26	11	11	153	124	1,474	1,648	-10.6
<b>Pennsylvania Total</b>	<b>1,164</b>	<b>1,085</b>	<b>409</b>	<b>478</b>	<b>5,323</b>	<b>4,999</b>	<b>64,517</b>	<b>65,190</b>	<b>-1.0</b>
Anthracite	20	24	7	10	92	128	1,525	1,568	-2.8
Bituminous	1,144	1,061	403	468	5,231	4,871	62,992	63,621	-1.0
Tennessee	49	43	13	21	230	214	2,451	2,654	-7.7
Texas	711	664	303	272	3,112	3,572	38,472	41,948	-8.3
Utah	440	428	134	203	2,031	2,069	23,819	24,307	-2.0
Virginia	490	356	169	164	2,232	1,642	24,820	25,462	-2.5
Washington	--	--	--	--	--	--	--	--	--
<b>West Virginia Total</b>	<b>2,949</b>	<b>2,580</b>	<b>1,027</b>	<b>1,155</b>	<b>13,443</b>	<b>11,932</b>	<b>159,378</b>	<b>153,522</b>	<b>3.8</b>
Northern	766	633	230	300	3,534	3,108	40,734	42,219	-3.5
Southern	2,183	1,947	798	855	9,909	8,824	118,644	111,303	6.6
Wyoming	8,697	9,580	3,608	4,146	40,224	38,434	467,456	453,568	3.1
<b>Appalachian Total</b>	<b>7,101</b>	<b>6,340</b>	<b>2,448</b>	<b>2,845</b>	<b>32,451</b>	<b>29,166</b>	<b>389,570</b>	<b>378,489</b>	<b>2.9</b>
<b>Interior Total</b>	<b>2,699</b>	<b>2,404</b>	<b>1,004</b>	<b>1,054</b>	<b>12,009</b>	<b>11,510</b>	<b>144,721</b>	<b>147,134</b>	<b>-1.6</b>
<b>Western Total</b>	<b>11,932</b>	<b>12,350</b>	<b>4,807</b>	<b>5,343</b>	<b>54,811</b>	<b>52,462</b>	<b>635,897</b>	<b>621,012</b>	<b>2.4</b>
<b>East of Miss. River</b>	<b>8,941</b>	<b>7,942</b>	<b>3,094</b>	<b>3,567</b>	<b>40,747</b>	<b>36,551</b>	<b>489,793</b>	<b>478,161</b>	<b>2.4</b>
<b>West of Miss. River</b>	<b>12,791</b>	<b>13,152</b>	<b>5,166</b>	<b>5,675</b>	<b>58,524</b>	<b>56,587</b>	<b>680,395</b>	<b>668,474</b>	<b>1.8</b>
Bituminous and Lignite	21,712	21,070	8,253	9,231	99,179	93,010	1,168,663	1,145,067	2.1
Anthracite	20	24	7	10	92	128	1,525	1,568	-2.8
<b>U.S. Total</b>	<b>21,732</b>	<b>21,094</b>	<b>8,260</b>	<b>9,242</b>	<b>99,271</b>	<b>93,138</b>	<b>1,170,188</b>	<b>1,146,635</b>	<b>2.1</b>
Railroad Cars Loaded	138,598	134,311	138,598	134,311	--	--	--	--	--

Source: Energy Information Administration



## WEEKLY ELECTRIC OUTPUT

Essential Energy Information from EEI's Statistics Department

Volume 77 No. 1

### OUTPUT FOR WEEK ENDED - Jan 03, 2009

Jan 07, 2009

The net available amount of electric energy distributed by the Total Electric Utility Industry+ for the week ended Saturday, Jan 03, 2009 was 72,665 gigawatthours (GWh), according to the Edison Electric Institute. This is equivalent to 176 on the weekly electric output index.

### WEEKLY ELECTRIC OUTPUT BY GEOGRAPHIC DIVISION

(48 CONTIGUOUS STATES)

	Week Ended January 03		52 Weeks Ended January 03	
	GWh Output	% Increase Over Corresponding Week of 2008	GWh Output	% Increase Over Corresponding Period of 2008
New England	2,534	-5.1	130,657	-3.0
Mid-Atlantic	8,547	-4.1	450,676	-2.0
Central Industrial	12,789	-8.7	707,328	-2.2
West Central	6,174	-6.2	345,032	-2.2
Southeast	18,809	-15.0	1,086,931	-2.1
South Central	9,678	-16.5	599,173	0.0
Rocky Mountain	5,150	-3.4	276,306	-0.6
Pacific Northwest	3,953	-2.5	167,573	5.1
Pacific Southwest	5,031	6.6	291,719	0.2
Total United States	72,665	-9.2	4,055,395	-1.3

### WEEKLY ELECTRIC OUTPUT IN PREVIOUS WEEKS--GWh

Week Ended	2009	Week Ended	2008	% Inc. (09/08)	52 Weeks Ended	2009	% Inc. (09/08)
Dec 13	79,537	Dec 15	79,780	-0.3	Dec 13	4,060,760	-0.8
Dec 20	79,709	Dec 22	80,631	-1.1	Dec 20	4,059,838	-0.9
Dec 27	77,710	Dec 29	74,832	3.8	Dec 27	4,062,716	-0.9
Jan 03	72,665	Jan 05	79,986	-9.2	Jan 03	4,055,395	-1.3
Jan 03	72,665	Jan 05	79,986	-9.2	YEAR TO DATE, FIRST WEEK		

### WEEKLY ELECTRIC OUTPUT INDEX--TOTAL U.S.\*

SEASONALLY ADJUSTED 1982 = 100

Week Ended	2009	Week Ended	2008	Week Ended	2007
Dec 13	181	Dec 15	180	Dec 16	173
Dec 20	182	Dec 22	180	Dec 23	170
Dec 27	184	Dec 29	175	Dec 30	169
Jan 03	176	Jan 05	192	Jan 06	171

\* Excludes Alaska and Hawaii.

+ Includes investor-owned companies, cooperatives and government-owned utilities.

Copyright © 2009 Edison Electric Institute. All rights reserved.

### WEEKLY ELECTRIC OUTPUT BY GEOGRAPHIC DIVISION (48 CONTIGUOUS STATES)

	Week Ended			NMA CUMULATIVE JANUARY WEEK ONE TO			52 Weeks Ended		
	3-Jan 2009 GWh Output	5-Jan 2008 GWh Output	% Increase Over Corresponding Week of 2008	3-Jan 2009 GWh Output	5-Jan 2008 GWh Output	% Increase Over Corresponding Week of 2008	3-Jan 2009 GWh Output	5-Jan 2008 GWh Output	% Increase Over Corresponding Week of 2008
<b>New England</b>	2,534	2,669	-5.1%	<b>2,534</b>	<b>2,669</b>	<b>-5.1%</b>	130,657	134,663	-3.0%
<b>Mid-Atlantic</b>	8,547	8,909	-4.1%	<b>8,547</b>	<b>8,909</b>	<b>-4.1%</b>	450,676	459,677	-2.0%
<b>Central Industrial</b>	12,789	14,001	-8.7%	<b>12,789</b>	<b>14,001</b>	<b>-8.7%</b>	707,328	723,201	-2.2%
<b>West Central</b>	6,174	6,580	-6.2%	<b>6,174</b>	<b>6,580</b>	<b>-6.2%</b>	345,032	352,676	-2.2%
<b>Southeast</b>	18,809	22,133	-15.0%	<b>18,809</b>	<b>22,133</b>	<b>-15.0%</b>	1,086,931	1,109,948	-2.1%
<b>South Central</b>	9,678	11,588	-16.5%	<b>9,678</b>	<b>11,588</b>	<b>-16.5%</b>	599,173	599,081	0.0%
<b>Rocky Mountain</b>	5,150	5,331	-3.4%	<b>5,150</b>	<b>5,331</b>	<b>-3.4%</b>	276,306	277,894	-0.6%
<b>Pacific Northwest</b>	3,953	4,056	-2.5%	<b>3,953</b>	<b>4,056</b>	<b>-2.5%</b>	167,573	159,462	5.1%
<b>Pacific Southwest</b>	5,031	4,719	6.6%	<b>5,031</b>	<b>4,719</b>	<b>6.6%</b>	291,719	291,169	0.2%
<b>Total United States *</b>	<u>72,665</u>	<u>79,986</u>	-9.2%	<b><u>72,665</u></b>	<b><u>79,986</u></b>	<b>-9.2%</b>	<u>4,055,395</u>	<u>4,107,771</u>	-1.3%

Notes: EEI output data are an estimate of electricity load made available for distribution derived as weekly net generation + purchases from non-utilities + net imports - exports - sales for resale. It is not meant to be a measure of electricity generation for the U.S. EEI survey data represent the majority of national distribution (large utilities, large government power projects, some independent and large municipal power projects). The remaining segment of the industry (smaller producers) is estimated. Non-utility generation is captured via direct sales to utilities.

\* Excludes Alaska and Hawaii

\*\* Less than one-tenth of one percent

SOURCE: Edison Electric Institute (EEI), *Weekly Electric Output Report*.

AMERICAN IRON AND STEEL INSTITUTE  
 1140 Connecticut Avenue, Suite 705  
 Washington, D.C. 20036

January 5, 2009

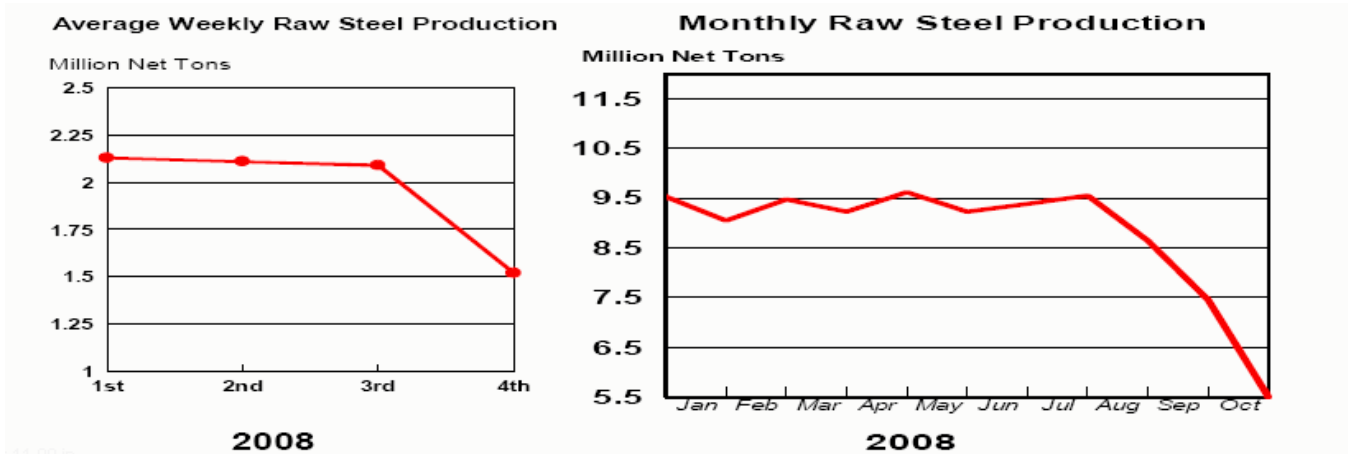
**ESTIMATED WEEKLY RAW STEEL \* PRODUCTION**

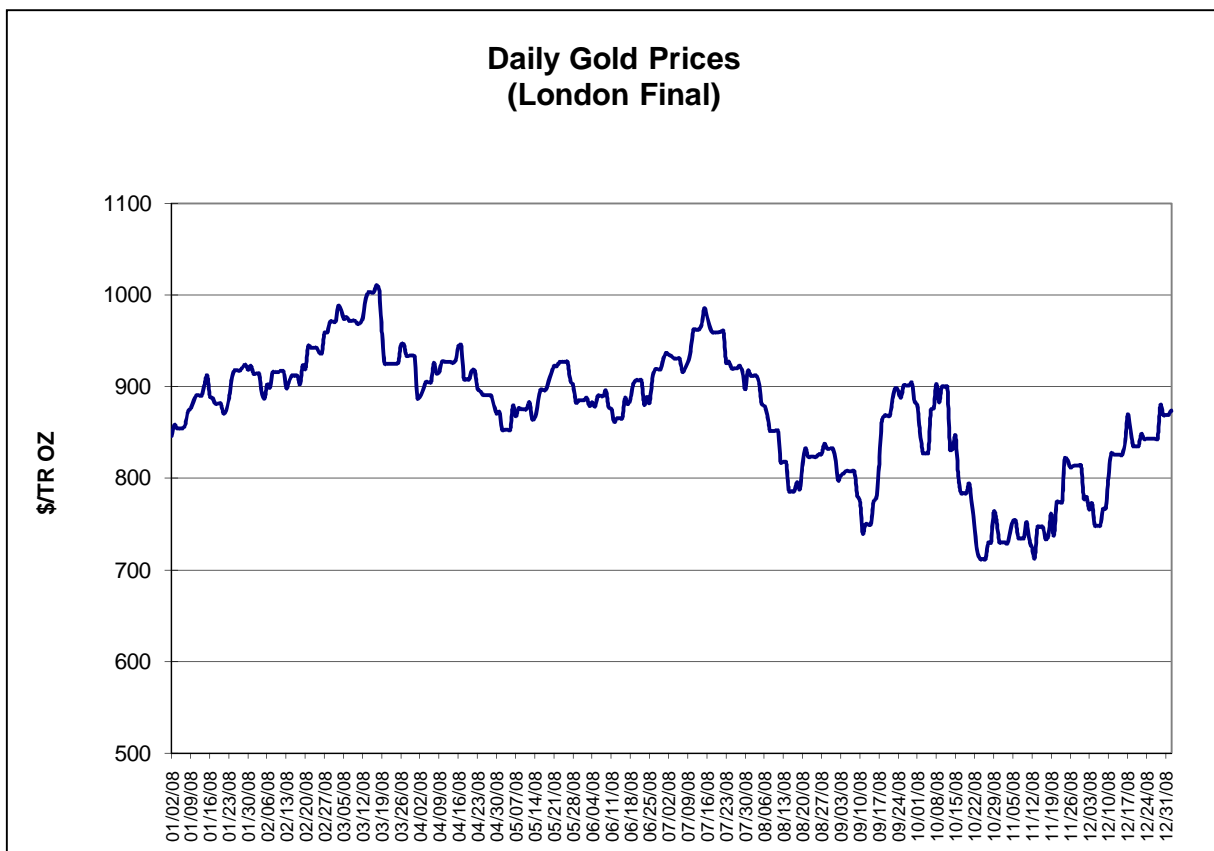
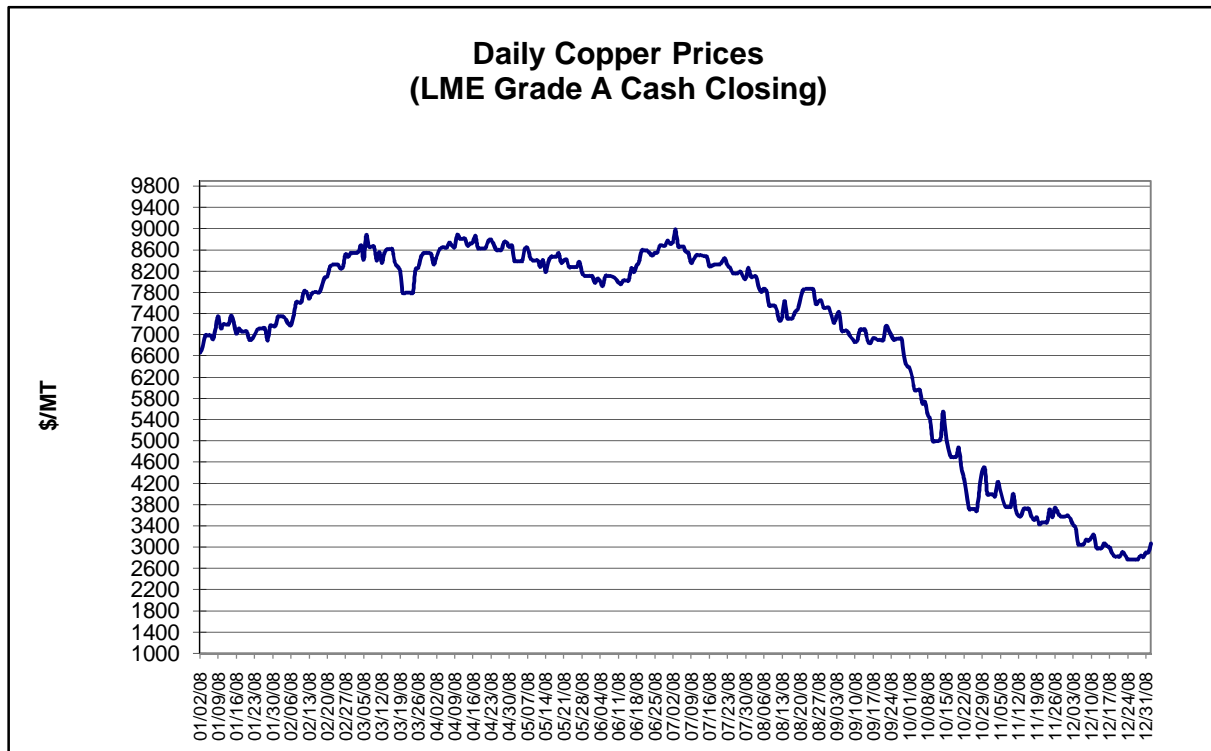
Period	Thousand Net Tons	Percent Change from Previous Period	Percent Capability Utilization**	Production by District		
				Week Ending Jan. 3	Dec. 27	
<b>Week Ending</b>				North East Coast	91	90
				Pgh/Youngstown	98	80
				Lake Erie	18	16
January 3, 2009	866	8.3	36.3	Detroit	28	28
January 3, 2008	2,128	-59.3	88.7	Indiana/Chicago	257	238
December 27, 2008	800	-21.8	33.5	Midwest	106	98
				Southern	226	215
				Western	42	35
				<b>Total</b>	<b>866</b>	<b>800</b>

\*Raw steel production tonnage included in this report is estimated based on a sampling of steel producers. Therefore, this report should be used primarily to assess production trends. The AISI production report "AIS 7," produced monthly and available by subscription, provides a more accurate summary of steel production based on data supplied by companies representing approximately 75% of U.S. production capacity.  
 + Includes revisions for previous months

NOTE: Capability for the Third Quarter 2008 is approximately 31.4 million net tons vs 30.1 million net tons for the same period last year, and 31.0 million tons for the second quarter of 2008.  
 Capability - 2004 approx. 2.2 million tons/week  
 2005 2.3  
 2006 2.4  
 2007 2.4  
 2008 2.4

\*Steel in the first solid state after melting suitable for further processing or sale, including ingots, steel for castings and strand or pressure cast blooms, slabs, or other product forms.  
 \*\* Based on tonnage capability to produce raw steel for a sustained full order book.

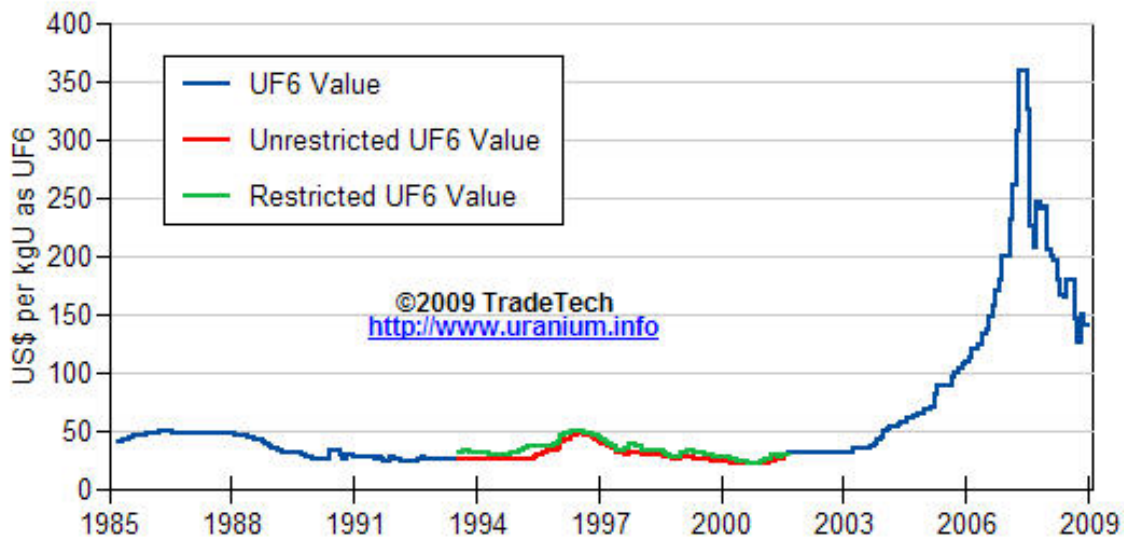




Data reflect closings on weekends and holidays.

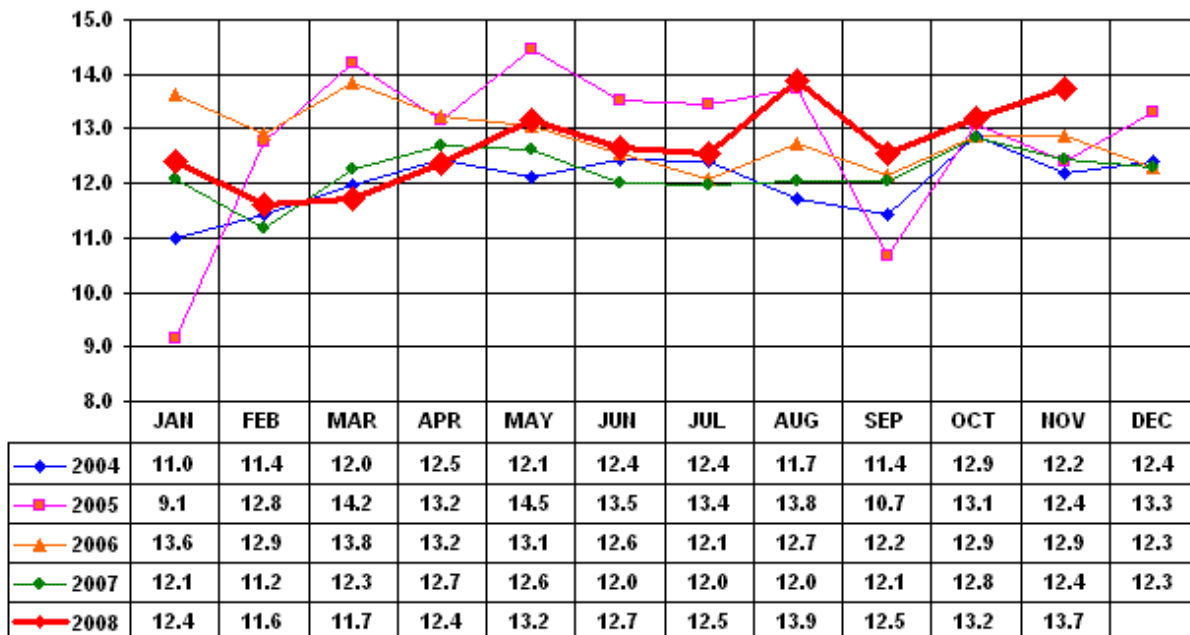
Source: Platts Metals Week

### Trade Tech's Uranium (UF6) Monthly Spot Prices (US\$/kg as UF6)



Source: Trade Tech, Uranium Info Website – <http://www.uranium.info>

### Coal and Coke Monthly Tonnage Indicator for Internal U.S. Waterways

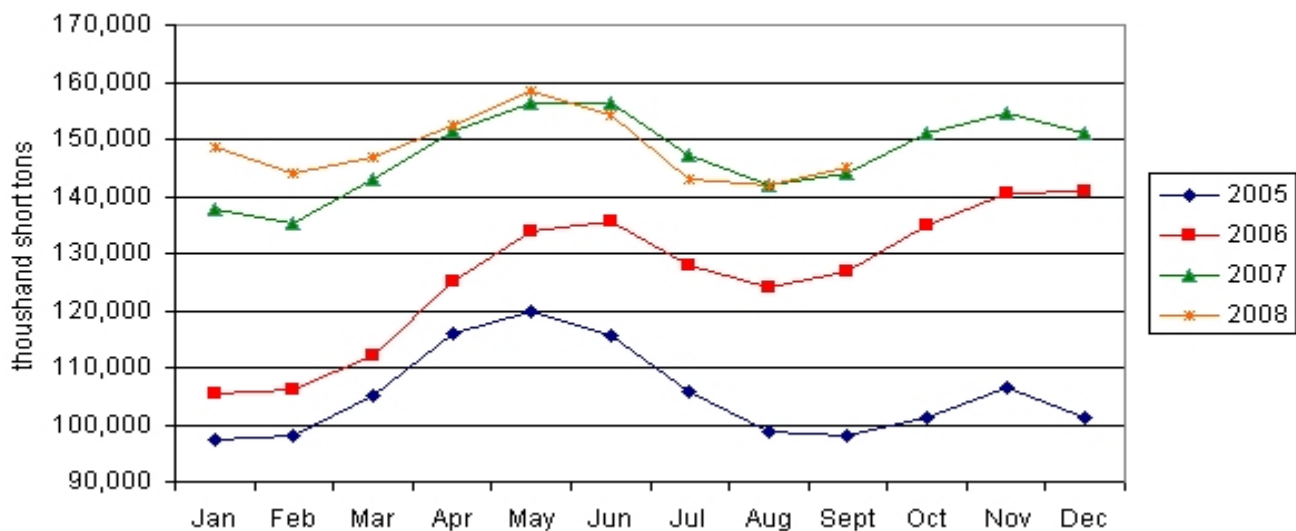


Source: U.S. Army Corps of Engineers, Waterborne Commerce Statistics Center

Average Weekly Coal Commodity Spot Prices (Dollars per Short Ton)					
Week Ended	Central Appalachia 12,500 Btu, 1.2 SO2	Northern Appalachia 13,000 Btu, <3.0 SO2	Illinois Basin 11,800 Btu, 5.0 SO2	Powder River Basin 8,800 Btu, 0.8 SO2	Uinta Basin 11,700 Btu, 0.8 SO2
07-Nov-08	\$119.25	\$111.50	\$84.00	\$14.50	\$73.00
14-Nov-08	\$111.15	\$111.50	\$84.00	\$14.50	\$73.00
21-Nov-08	\$111.15	\$111.50	\$84.00	\$14.50	\$73.00
28-Nov-08	\$111.15	\$101.50	\$83.00	\$14.50	\$73.00
05-Dec-08	\$89.80	\$101.50	\$78.00	\$12.50	\$73.00
12-Dec-08	\$81.55	\$101.50	\$78.00	\$12.50	\$73.00
19-Dec-08	\$81.55	\$101.50	\$78.00	\$13.00	\$73.00
2-Jan-09	\$80.85	\$88.75	\$78.00	\$13.00	\$73.00

Source: Energy Information Administration (from Platts *Coal Outlook*, "Weekly Price Survey")

### EIA Electric Power Sector Coal Stocks



Source: Energy Information Administration, *Coal News and Markets Report*

<b>USGS Production of Selected Mineral Commodities</b>	<b>2008 Year to Date - 3rd Quarter</b>	<b>2007 Year to Date - 3rd Quarter</b>	<b>Percent Change</b>
Aluminum, secondary (000 Mt.)	729.0	708.0	3%
Cement (Mil. Mt.)	65.6	70.0	-6%
Gypsum (Mil. Mt.)	14.1	16.4	-14%
Iron Ore (Mil. Mt.)	40.9	38.6	6%
Phosphate rock (Mil. Mt.)	23.0	22.1	4%
Sand & gravel, construction (Mil. Mt.)	754.0	940.0	-20%
Soda ash (Mil. Mt.)	8.4	8.3	1%
Stone, crushed (Mil. Mt.)	1,020.0	1,220.0	-16%
Zinc (000 Mt.)	628.0	574.0	9%

Source: U.S. Geological Survey, Mineral Industry Surveys, *U.S. Production of Selected Mineral Commodities in the Third Quarter 2008, November 2008*

<b>AAR U.S. Rail Traffic for Selected Commodities - Carloadings (000)</b>	<b>2008 Year to Date - Dec. 27</b>	<b>2007 Year to Date - Dec. 27</b>	<b>Percent Change</b>
Agricultural Products	2,161	2,151	0.5%
Chemicals	1,850	1,903	-2.8%
Coal	7,466	7,215	3.5%
Forest Products	657	743	-11.6%
Metallic Ores & Metals	1,169	1,291	-9.5%
Motor Vehicles & Equipment	814	1,034	-21.3%
Non-metallic Minerals & Products	1,693	1,853	-8.6%

Source: Association of American Rainroads, *Weekly Railroad Traffic*