

---

National Mining Association

# Weekly Statistical Summary

February 1, 2008 Edition  
(Data for Week Ending January 26, 2008)

Prepared by  
National Mining Association



Suite 500 East, 101 Constitution Avenue, NW  
Washington, DC, 20001  
Phone (202) 463-2600  
Visit us at <http://www.nma.org>

# NMA Weekly Statistical Summary

Vol. 46, No. 04  
Dated 02/01/08

PRODUCTION, CONSUMPTION & TRADE						
	Week Ended			Cumulative Jan 1 to		
	01/26/08	01/27/07	% Chng	01/26/08	01/27/07	% Chng
<b>EIA Coal Production (000 Tons):</b>						
Week Ended/Year to Date	22,497	22,679	-0.8%	83,779	84,603	-1.0%
52 Weeks Ended	1,145,656	1,160,392	-1.3%			
<b>Month Ended -- December</b>						
	<b>December 07/06</b>		<b>% Chng</b>	<b>Jan - Dec 07/06</b>		<b>% Chng</b>
	94,340	96,063	-1.8%	1,148,168	1,162,750	-1.3%
MONTH ENDED AND CUMULATIVE NUMBERS ARE PRELIMINARY AND SUBJECT TO CHANGE						
<b>DOC Bituminous Coal Trade (000 Tons)</b>						
<b>Exports:</b>						
	<b>November 07/06</b>		<b>% Chng</b>	<b>Jan - Nov 07/06</b>		<b>% Chng</b>
Metallurgical	3,096	2,556	21.1%	29,528	25,353	16.5%
Steam	3,119	2,207	41.3%	23,273	19,810	17.5%
<b>Imports:</b>						
	2,889	2,630	9.8%	33,535	33,156	1.1%
<b>EEI Electric Output (Mil. Kwh)</b>						
	<b>Week Ended</b>			<b>Cumulative Jan 1 to</b>		
	<b>01/26/08</b>	<b>01/27/07</b>	<b>% Chng</b>	<b>01/26/08</b>	<b>01/27/07</b>	<b>% Chng</b>
EEI Electric Output (Mil. Kwh)	86,441	81,048	6.7%	323,080	312,078	3.5%
AISI Raw Steel Output (000 Tons)	2,101	1,877	11.9%	8,262	7,508	10.0%
<b>EIA U.S. PETROLEUM DATA</b>						
4-Week Averages 000 Barrels per Day						
<b>PETROLEUM SUPPLY:</b>						
	<b>Week Ending</b>			<b>Cumulative Daily Averages</b>		
	<b>01/25/08</b>	<b>01/25/07</b>	<b>% Chng</b>	<b>2008</b>	<b>2007</b>	<b>% Chng</b>
Domestic Crude	5,026	5,192	-3.2	--	--	--
Net Imports (Incl. SPR)	10,076	10,090	-0.1	--	--	--
SPR Stocks W/D or Added	-63	0	--	--	--	--
Other Stocks W/D or added	121	-213	--	--	--	--
Natural Gas Liquids Prod.	2,446	2,273	7.6	--	--	--
Cumulative daily petroleum averages will be shown beginning with week ending April 4, 2008 data.						



**NMA**  
THE AMERICAN RESOURCE

National Mining Association Web Site: [http:// www.nma.org](http://www.nma.org)

## EIA Estimated Weekly U.S. Coal Production Overview (Thousand Short Tons)

Coal-Producing Region and State	Week Ended			Year to Date			52 Weeks Ended		
	1/26/2008	1/19/2008	1/27/2007	1/26/2008	1/26/2007	Percent Change	1/26/2008	1/27/2007	Percent Change
Alabama	393	393	406	1,432	1,559	-8.2	19,055	18,890	0.9
Alaska	25	25	36	89	137	-35.4	1,268	1,458	-13
Arizona	122	123	160	463	617	-24.9	7,711	8,186	-5.8
Arkansas	2	2	1	8	5	48.3	83	27	210.2
Colorado	714	714	632	2,590	2,305	12.3	36,784	36,542	0.7
Illinois	686	687	754	2,473	2,841	-13.0	33,753	33,087	2.0
Indiana	721	722	712	2,639	2,699	-2.2	35,778	35,127	1.9
Kansas	10	10	8	36	32	10.4	444	441	0.8
<b>Kentucky Total</b>	<b>2,312</b>	<b>2,315</b>	<b>2,326</b>	<b>8,445</b>	<b>8,851</b>	<b>-4.6</b>	<b>115,048</b>	<b>120,151</b>	<b>-4.2</b>
Eastern	1,688	1,690	1,732	6,180	6,617	-6.6	86,128	92,849	-7.2
Western	624	625	594	2,265	2,234	1.4	28,920	27,302	5.9
Louisiana	80	88	64	339	278	22.2	3,195	4,057	-21.2
Maryland	41	41	47	151	180	-16.5	2,559	4,799	-46.7
Mississippi	44	68	71	233	235	-0.8	3,622	3,727	-2.8
Missouri	4	4	5	16	18	-9.6	231	365	-36.8
Montana	844	845	796	3,079	2,886	6.7	42,266	41,835	1.0
New Mexico	464	464	433	1,706	1,652	3.3	24,449	25,770	-5.1
North Dakota	584	584	609	2,153	2,347	-8.2	29,332	30,344	-3.3
Ohio	471	471	442	1,721	1,673	2.9	22,228	22,508	-1.2
Oklahoma	38	38	33	138	126	9.5	1,747	1,949	-10.3
<b>Pennsylvania Total</b>	<b>1,310</b>	<b>1,311</b>	<b>1,375</b>	<b>4,766</b>	<b>5,254</b>	<b>-9.3</b>	<b>64,750</b>	<b>66,229</b>	<b>-2.2</b>
Anthracite	35	35	32	127	122	3.8	1,564	1,535	1.9
Bituminous	1,275	1,276	1,344	4,640	5,132	-9.6	63,186	64,694	-2.3
Tennessee	48	48	56	176	216	-18.2	2,557	2,785	-8.2
Texas	821	822	783	2,996	2,827	6.0	42,110	45,172	-6.8
Utah	452	453	481	1,644	1,827	-10.1	23,413	25,734	-9.0
Virginia	510	511	572	1,853	2,161	-14.2	26,551	29,603	-10.3
Washington	0	0	0	0	0	*	0	2,341	-100.0
<b>West Virginia Total</b>	<b>3,066</b>	<b>3,069</b>	<b>3,172</b>	<b>11,166</b>	<b>12,013</b>	<b>-7.1</b>	<b>153,366</b>	<b>152,251</b>	<b>0.7</b>
Northern	969	970	946	3,476	3,588	-3.1	44,309	42,478	4.3
Southern	2,097	2,099	2,226	7,690	8,425	-8.7	109,057	109,773	-0.7
Wyoming	8,734	9,003	8,704	33,468	31,861	5.0	453,354	447,015	1.4
<b>Appalachian Total</b>	<b>7,528</b>	<b>7,536</b>	<b>7,803</b>	<b>27,446</b>	<b>29,674</b>	<b>-7.5</b>	<b>377,195</b>	<b>389,914</b>	<b>-3.3</b>
<b>Interior Total</b>	<b>3,030</b>	<b>3,065</b>	<b>3,025</b>	<b>11,141</b>	<b>11,295</b>	<b>-1.4</b>	<b>149,884</b>	<b>151,253</b>	<b>-0.9</b>
<b>Western Total</b>	<b>11,938</b>	<b>12,211</b>	<b>11,851</b>	<b>45,192</b>	<b>43,633</b>	<b>3.6</b>	<b>618,577</b>	<b>619,226</b>	<b>-0.1</b>
<b>East of Miss. River</b>	<b>9,603</b>	<b>9,637</b>	<b>9,933</b>	<b>35,055</b>	<b>37,683</b>	<b>-7.0</b>	<b>479,269</b>	<b>489,156</b>	<b>-2.0</b>
<b>West of Miss. River</b>	<b>12,894</b>	<b>13,174</b>	<b>12,745</b>	<b>48,724</b>	<b>46,919</b>	<b>3.8</b>	<b>666,388</b>	<b>671,236</b>	<b>-0.7</b>
Bituminous and Lignite	22,461	22,776	22,647	83,653	84,481	-1.0	1,144,092	1,158,857	-1.3
Anthracite	35	35	32	127	122	3.8	1,564	1,535	1.9
<b>U.S. Total</b>	<b>22,497</b>	<b>22,811</b>	<b>22,679</b>	<b>83,779</b>	<b>84,603</b>	<b>-1.0</b>	<b>1,145,656</b>	<b>1,160,392</b>	<b>-1.3</b>
Railroad Cars Loaded	141,488	145,761	144,434	568,533	558,751	1.8	7,413,814	7,446,978	-0.4

Source: Energy Information Administration



**Volume 76 No. 4**

**OUTPUT FOR WEEK ENDED - Jan 26, 2008**

**Jan 30, 2008**

The net available amount of electric energy distributed by the Total Electric Utility Industry+ for the week ended Saturday, Jan 26, 2008 was 86,441 gigawatthours (GWh), according to the Edison Electric Institute. This is equivalent to 195 on the weekly electric output index.

**WEEKLY ELECTRIC OUTPUT BY GEOGRAPHIC DIVISION**  
(48 CONTIGUOUS STATES)

	Week Ended January 26		52 Weeks Ended January 26	
	GWh Output	% Increase Over Corresponding Week of 2007	GWh Output	% Increase Over Corresponding Period of 2007
New England	2,737	-3.1	134,485	1.9
Mid-Atlantic	9,380	1.9	459,788	3.5
Central Industrial	15,752	7.3	724,291	4.0
West Central	7,360	8.6	353,433	2.5
Southeast	23,849	8.2	1,112,584	3.5
South Central	12,147	6.6	598,066	-1.2
Rocky Mountain	5,272	7.9	278,482	6.0
Pacific Northwest	4,241	19.4	160,241	4.6
Pacific Southwest	5,703	0.6	290,246	-0.8
Total United States	86,441	6.7	4,111,615	2.6

**WEEKLY ELECTRIC OUTPUT IN PREVIOUS WEEKS--GWh**

Week Ended	2008	Week Ended	2007	% Inc. (08/07)	52 Weeks Ended	2008	% Inc. (08/07)
Jan 05	79,986	Jan 06	72,829	9.8	Jan 05	4,107,770	3.0
Jan 12	75,302	Jan 13	76,608	-1.7	Jan 12	4,106,463	2.9
Jan 19	81,351	Jan 20	81,592	-0.3	Jan 19	4,106,222	2.7
Jan 26	86,441	Jan 27	81,048	6.7	Jan 26	4,111,615	2.6
Jan 26	323,080	Jan 27	312,078	3.5	<b>YEAR TO DATE, FIRST 4 WEEKS</b>		

**WEEKLY ELECTRIC OUTPUT INDEX--TOTAL U.S.\***  
SEASONALLY ADJUSTED 1982 = 100

Week Ended	2008	Week Ended	2007	Week Ended	2006
Jan 05	192	Jan 06	171	Jan 07	167
Jan 12	174	Jan 13	172	Jan 14	164
Jan 19	183	Jan 20	179	Jan 21	165
Jan 26	195	Jan 27	179	Jan 28	166

\* Excludes Alaska and Hawaii.

+ Includes investor-owned companies, cooperatives and government-owned utilities.

Copyright © 2008 Edison Electric Institute. All rights reserved.

## WEEKLY ELECTRIC OUTPUT BY GEOGRAPHIC DIVISION (48 CONTIGUOUS STATES)

	Week Ended			NMA CUMULATIVE JANUARY 1 to			52 Weeks Ended		
	26-Jan 2008 GWh Output	27-Jan 2007 GWh Output	% Increase Over Corresponding Week of 2007	26-Jan 2008 GWh Output	27-Jan 2007 GWh Output	% Increase Over Corresponding Week of 2007	26-Jan 2008 GWh Output	27-Jan 2007 GWh Output	% Increase Over Corresponding Week of 2007
<b>New England</b>	2,737	2,826	-3.1%	<b>10,534</b>	<b>10,494</b>	<b>0.4%</b>	134,485	131,922	1.9%
<b>Mid-Atlantic</b>	9,380	9,206	1.9%	<b>35,149</b>	<b>34,030</b>	<b>3.3%</b>	459,788	444,219	3.5%
<b>Central Industrial</b>	15,752	14,684	7.3%	<b>58,118</b>	<b>55,966</b>	<b>3.8%</b>	724,291	696,339	4.0%
<b>West Central</b>	7,360	6,779	8.6%	<b>27,739</b>	<b>26,523</b>	<b>4.6%</b>	353,433	344,954	2.5%
<b>Southeast</b>	23,849	22,046	8.2%	<b>87,948</b>	<b>82,023</b>	<b>7.2%</b>	1,112,584	1,075,028	3.5%
<b>South Central</b>	12,147	11,396	6.6%	<b>45,437</b>	<b>45,507</b>	<b>-0.2%</b>	598,066	605,358	-1.2%
<b>Rocky Mountain</b>	5,272	4,887	7.9%	<b>20,921</b>	<b>19,871</b>	<b>5.3%</b>	278,482	262,801	6.0%
<b>Pacific Northwest</b>	4,241	3,553	19.4%	<b>16,255</b>	<b>15,092</b>	<b>7.7%</b>	160,241	153,176	4.6%
<b>Pacific Southwest</b>	<u>5,703</u>	<u>5,671</u>	0.6%	<u><b>20,979</b></u>	<u><b>22,571</b></u>	<b>-7.1%</b>	<u>290,246</u>	<u>292,663</u>	-0.8%
<b>Total United States *</b>	86,441	81,048	6.7%	<b>323,080</b>	<b>312,077</b>	<b>3.5%</b>	4,111,616	4,006,460	2.6%

**Notes:** EEI output data are an estimate of electricity load made available for distribution derived as weekly net generation + purchases from non-utilities + net imports - exports - sales for resale. It is not meant to be a measure of electricity generation for the U.S. EEI survey data represent the majority of national distribution (large utilities, large government power projects, some independent and large municipal power projects). The remaining segment of the industry (smaller producers) is estimated. Non-utility generation is captured via direct sales to utilities.

\* Excludes Alaska and Hawaii

\*\* Less than one-tenth of one percent

SOURCE: Edison Electric Institute (EEI), *Weekly Electric Output Report*.

AMERICAN IRON AND STEEL INSTITUTE  
 1140 Connecticut Avenue, Suite 705  
 Washington, D.C. 20036

January 28, 2008

**ESTIMATED WEEKLY RAW STEEL\* PRODUCTION**

<u>Period</u>	<u>Thousand Net Tons</u>	<u>Percent Change from Previous Period</u>	<u>Percent Capability Utilization**</u>	<u>Production by District</u>		
				<u>Week Ending</u>		
				<u>Jan 26</u>	<u>Jan 19</u>	
<b><u>Week Ending</u></b>				North East Coast	189	192
				Pgh/Youngstown	219	212
				Lake Erie	84	87
Jan 26, 2008	2,101	0.8	88.1	Detroit	117	123
Jan 26, 2007	1,877	11.9	78.2	Indiana/Chicago	460	470
Jan 19, 2008	2,084	1.6	87.4	Midwest	271	265
				Southern	672	647
				Western	89	88
				Total	2101	2084
<b><u>Year-to-Date+</u></b>						
Jan 26, 2008	8,262	10.0	86.6			
Jan 26, 2007	7,508	-	78.2			

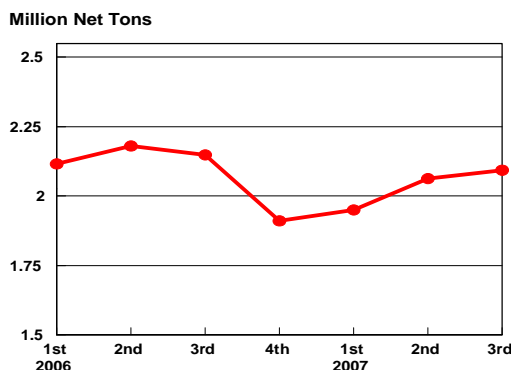
\*Raw steel production tonnage included in this report is estimated based on a sampling of steel producers. Therefore, this report should be used primarily to assess production trends. The AISI production report "AIS 7," produced monthly and available by subscription, provides a more accurate summary of steel production based on data supplied by companies representing approximately 75% of U.S. production capacity.

+Includes revisions for previous months

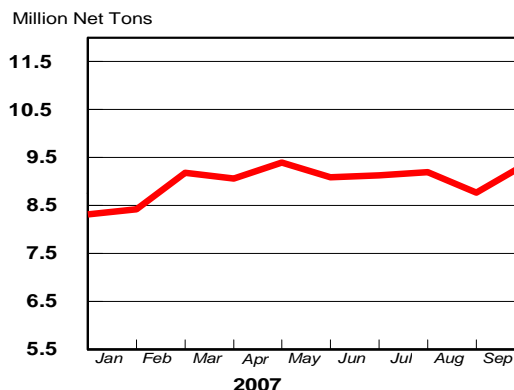
NOTE: Capability for the Fourth Quarter 2007 is approximately 31.3 million net tons vs 30.7 million net tons for the same period last year, and 30.1 million tons for the third quarter of 2007.

Capability -	2003 approx.	2.3 million tons/week
	2004	2.2
	2005	2.3
	2006	2.4
	2007	2.4

**Average Weekly Raw Steel Production**

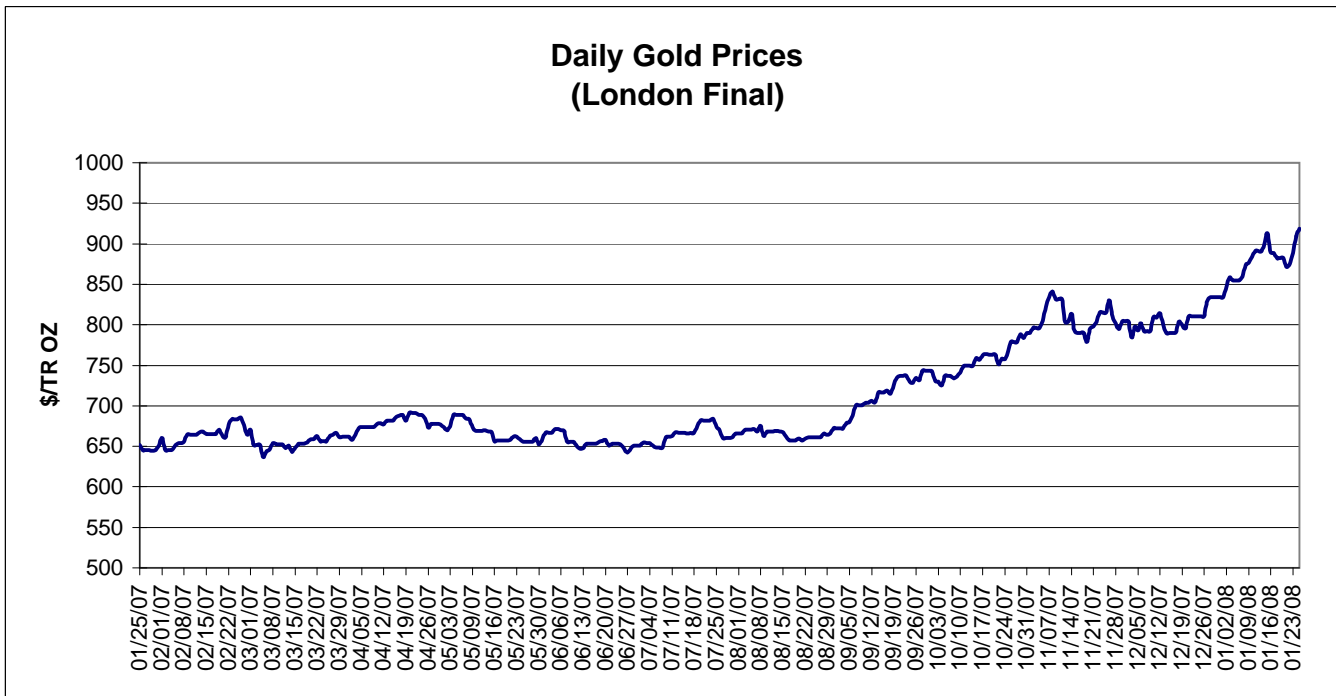
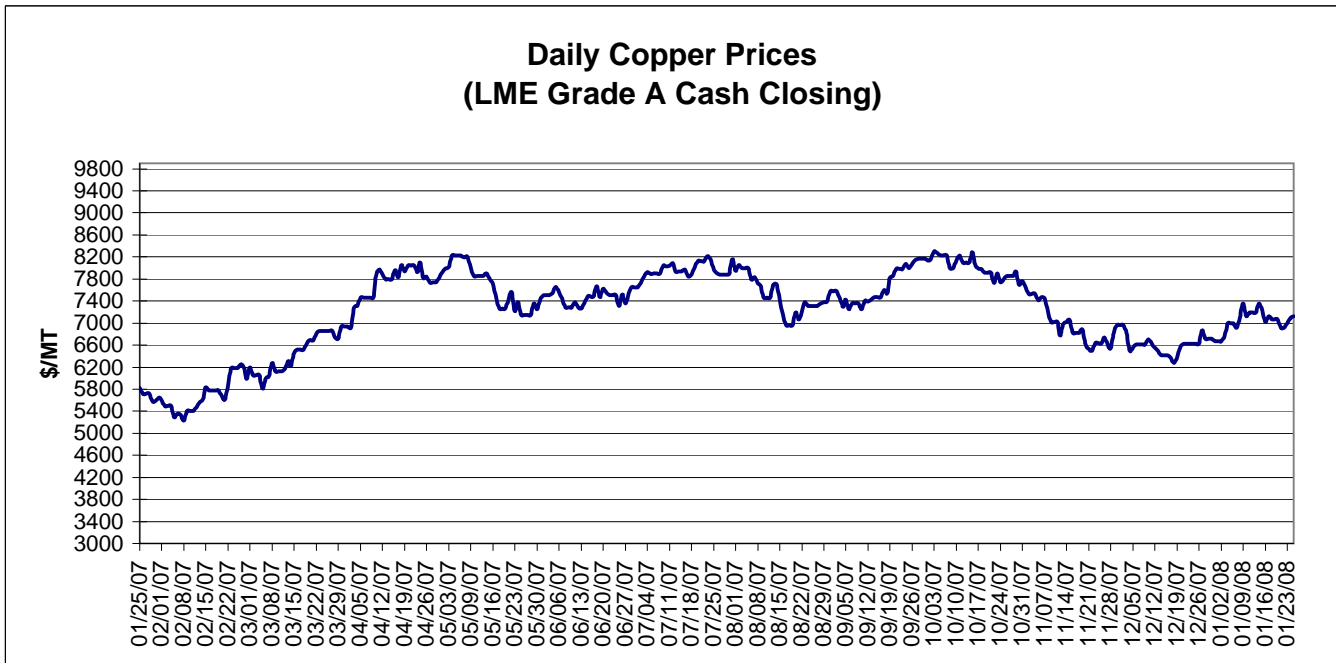


**MONTHLY RAW STEEL PRODUCTION**



\*Steel in the first solid state after melting suitable for further processing or sale, including ingots, steel for castings and strand or pressure cast blooms, slabs, or other product forms.

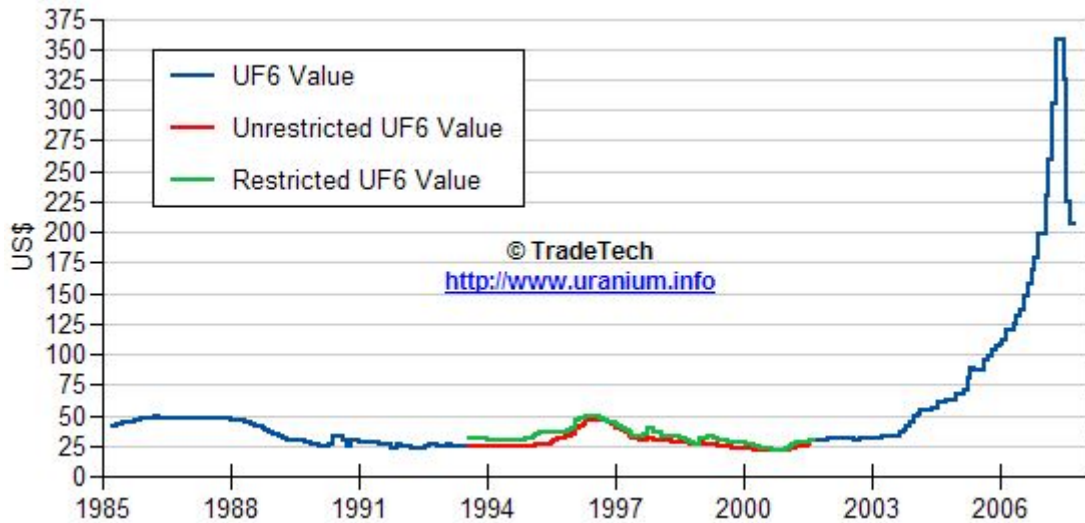
\*\* Based on tonnage capability to produce raw steel for a sustained full order book.



Data reflect closings on weekends and holidays.

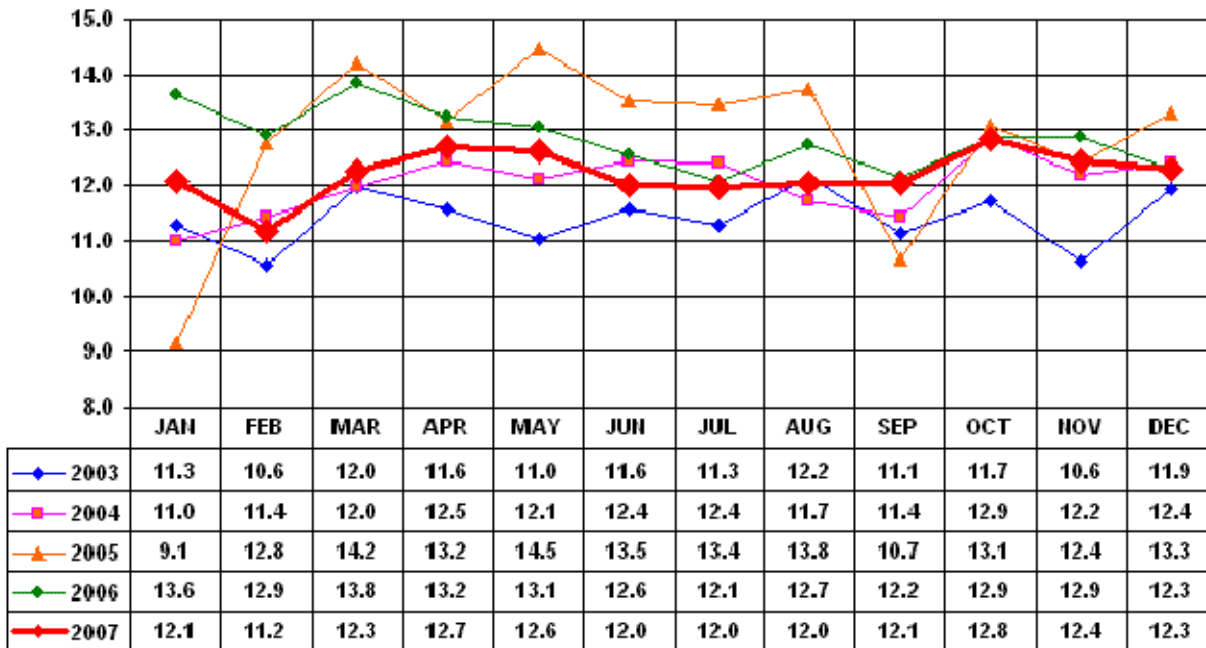
Source: Platts Metals Week

### Trade Tech's Uranium (UF6) Monthly Spot Prices (US\$/kg as UF6)



Source: Trade Tech, Uranium Info Website – <http://www.uranium.info>

### Coal and Coke Monthly Tonnage Indicator for Internal U.S. Waterways



Source: U.S. Army Corps of engineers, Waterborne Commerce Statistics Center

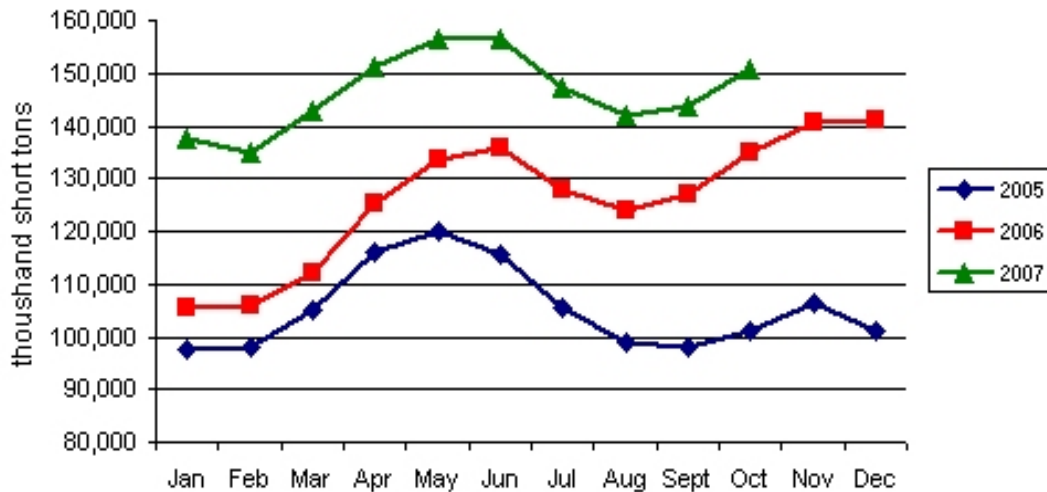
### EIA Weekly Spot Coal Prices

The following average spot coal prices appear in the graphic below, for the previous and most recent weeks:

Week Ended	Central Appalachia 12,500 Btu, 1.2 SO2	Northern Appalachia 13,000 Btu, <3.0 SO2	Illinois Basin 11,800 Btu, 5.0 SO2	Powder River Basin 8,800 Btu, 0.8 SO2	Uinta Basin 11,700 Btu, 0.8 SO2
14-Dec-07	\$57.70	\$55.25	\$33.50	\$11.50	\$24.00
21-Dec-07	\$57.70	\$55.25	\$33.50	\$11.50	\$24.00
04-Jan-08	\$58.30	\$61.75	\$34.00	\$11.60	\$24.00
11-Jan-08	\$58.30	\$61.75	\$34.00	\$11.65	\$24.00
18-Jan-08	\$58.30	\$61.75	\$34.00	\$11.85	\$33.00
25-Jan-08	\$59.90	\$63.00	\$34.00	\$12.30	\$33.00

Source: Energy Information Administration (from Platts *Coal Outlook*, "Weekly Price Survey")

### Electric Power Sector Coal Stocks



Source: Energy Information Administration