

---

National Mining Association

# Weekly Statistical Summary

February 13, 2009 Edition  
(Data for Week Ending February 7, 2009)

Prepared by  
National Mining Association



Suite 500 East, 101 Constitution Avenue, NW  
Washington, DC, 20001  
Phone (202) 463-2600  
Visit us at <http://www.nma.org>

# NMA Weekly Statistical Summary

Vol. 47, No. 6  
Dated 02/13/09

PRODUCTION, CONSUMPTION & TRADE						
	Week Ended			* Cumulative Jan 1 to		
	02/07/09	02/09/08	% Chng	02/07/09	02/07/08	% Chng
<b>EIA Coal Production (000 Tons):</b>						
Week Ended/Year to Date	21,453	22,025	-2.6%	118,421	120,626	-1.8%
52 Weeks Ended	1,162,572	1,141,464	1.8%			
<b>Month Ended -- January</b>						
	96,968	98,619	-1.7%	96,968	98,619	-1.7%
MONTH ENDED AND CUMULATIVE NUMBERS ARE PRELIMINARY AND SUBJECT TO CHANGE						
<b>DOC Bituminous Coal Trade (000 Tons)</b>						
<b>Exports:</b>	Nov 08/07		% Chng	Jan - Nov 08/07		% Chng
Metallurgical	3,636	3,096	17.4%	40,363	29,528	36.7%
Steam *	3,785	3,119	21.4%	34,152	23,273	46.7%
<b>Imports:</b>	2,988	2,889	3.4%	31,015	33,535	-7.5%
<b>EI Electric Output (Mil. Kwh)</b>						
	79,889	76,941	3.8%	476,482	481,026	-0.9%
<b>AISI Raw Steel Output (000 Tons)</b>						
	1,080	2,186	-50.6%	5,590	11,723	-52.3%
<b>EIA U.S. PETROLEUM DATA</b>						
4-Week Averages 000 Barrels per Day						
<b>PETROLEUM SUPPLY:</b>						
	Week Ending			Cumulative Daily Averages		
	02/06/09	02/06/08	% Chng	2008	2007	% Chng
Domestic Crude	5,165	5,097	1.3			
Net Imports (Incl. SPR)	9,788	9,916	-1.3			
SPR Stocks W/D or Added	-70	-40	--			
Other Stocks W/D or added	-864	-305	--			
Natural Gas Liquids Prod.	2,009	2,138	-6.0			

Cumulative daily petroleum averages will be shown beginning with week ending April 3, 2009 data. \* Excludes lignite & anthracite



**NMA**

THE AMERICAN RESOURCE National Mining Association Web Site: [http:// www.nma.org](http://www.nma.org)

## EIA Estimated Weekly U.S. Coal Production Overview (Thousand Short Tons)

Coal-Producing Region and State	Week Ended			Year to Date			52 Weeks Ended		
	2/7/2009	1/31/2009	2/9/2008	2/7/2009	2/7/2008	Percent Change	2/7/2009	2/9/2008	Percent Change
Alabama	397	410	432	2,184	2,370	-7.8	20,508	19,603	4.6
Alaska	24	25	29	130	159	-18.0	1,336	1,280	4.4
Arizona	161	166	144	877	810	8.2	8,069	7,888	2.3
Arkansas	1	1	1	6	6	-5.5	58	81	-28.3
Colorado	647	670	630	3,587	3,406	5.3	33,743	36,336	-7.1
Illinois	568	588	595	3,111	3,226	-3.6	31,718	31,768	-0.2
Indiana	677	700	667	3,736	3,657	2.1	36,002	34,819	3.4
Kansas	5	5	6	28	33	-16.3	280	406	-30.9
Kentucky Total	2,068	2,140	2,291	11,332	12,555	-9.7	117,272	114,890	2.1
Eastern	1,549	1,603	1,729	8,476	9,496	-10.7	88,168	86,877	1.5
Western	518	537	562	2,855	3,059	-6.6	29,104	28,013	3.9
Louisiana	61	74	82	455	434	5.0	3,954	3,186	24.1
Maryland	46	48	40	253	218	16.4	2,593	2,253	15.1
Mississippi	56	97	52	337	338	-0.3	2,736	3,538	-22.7
Missouri	6	6	4	30	22	37.8	260	232	12.0
Montana	820	848	863	4,559	4,676	-2.5	43,926	43,746	0.4
New Mexico	550	569	352	3,041	1,940	56.8	28,605	23,949	19.4
North Dakota	533	551	537	2,946	2,971	-0.9	29,503	29,135	1.3
Ohio	451	467	465	2,494	2,546	-2.0	25,351	22,658	11.9
Oklahoma	31	32	30	172	165	4.0	1,475	1,629	-9.5
Pennsylvania Total	1,202	1,243	1,313	6,595	7,181	-8.2	63,655	64,627	-1.5
Anthracite	21	21	30	113	161	-29.4	1,472	1,550	-5.0
Bituminous	1,181	1,222	1,283	6,482	7,021	-7.7	62,183	63,077	-1.4
Tennessee	46	48	48	250	266	-6.0	2,425	2,603	-6.8
Texas	741	767	711	4,118	3,845	7.1	38,548	41,515	-7.1
Utah	431	446	502	2,355	2,744	-14.2	23,322	24,371	-4.3
Virginia	464	480	434	2,557	2,365	8.1	24,916	24,598	1.3
West Virginia Total	2,887	2,987	3,026	15,888	16,545	-4.0	158,055	152,456	3.7
Northern	778	805	789	4,234	4,272	-0.9	40,525	41,305	-1.9
Southern	2,109	2,182	2,237	11,654	12,274	-5.0	117,530	111,151	5.7
Wyoming	8,583	8,060	8,771	47,383	48,149	-1.6	464,261	453,895	2.3
<b>Appalachian Total</b>	<b>7,041</b>	<b>7,287</b>	<b>7,486</b>	<b>38,696</b>	<b>40,986</b>	<b>-5.6</b>	<b>385,673</b>	<b>375,675</b>	<b>2.7</b>
<b>Interior Total</b>	<b>2,664</b>	<b>2,808</b>	<b>2,710</b>	<b>14,847</b>	<b>14,785</b>	<b>0.4</b>	<b>144,134</b>	<b>145,188</b>	<b>-0.7</b>
<b>Western Total</b>	<b>11,748</b>	<b>11,335</b>	<b>11,829</b>	<b>64,877</b>	<b>64,855</b>	<b>*</b>	<b>632,765</b>	<b>620,601</b>	<b>2.0</b>
<b>East of Miss. River</b>	<b>8,861</b>	<b>9,209</b>	<b>9,362</b>	<b>48,735</b>	<b>51,266</b>	<b>-4.9</b>	<b>485,233</b>	<b>473,814</b>	<b>2.4</b>
<b>West of Miss. River</b>	<b>12,593</b>	<b>12,221</b>	<b>12,663</b>	<b>69,686</b>	<b>69,359</b>	<b>0.5</b>	<b>677,340</b>	<b>667,650</b>	<b>1.5</b>
Bituminous and Lignite	21,433	21,409	21,996	118,308	120,465	-1.8	1,161,101	1,139,914	1.9
Anthracite	21	21	30	113	161	-29.4	1,472	1,550	-5.0
<b>U.S. Total</b>	<b>21,453</b>	<b>21,430</b>	<b>22,025</b>	<b>118,421</b>	<b>120,626</b>	<b>-1.8</b>	<b>1,162,572</b>	<b>1,141,464</b>	<b>1.8</b>
Railroad Cars Loaded	134,071	132,854	143,386	830,457	854,947	-2.9	7,628,079	7,421,111	2.8

Source: Energy Information Administration

## EIA Estimated Monthly U.S. Coal Production Overview (Thousand Short Tons)

Coal-Producing Region and State	Week Ended		Year To Date		Month Ended		January - January		Percent Change
	1/31/2009	2/2/2008	1/31/2009	1/31/2008	January 2009	January 2008	2009	2008	
Alabama	410	434	1,787	1,937	1,787	1,937	1,787	1,937	-7.7
Alaska	25	29	106	129	106	129	106	129	-18.1
Arizona	166	145	716	666	716	666	716	666	7.5
Arkansas	1	1	5	5	5	5	5	5	-5.4
Colorado	670	632	2,940	2,775	2,940	2,775	2,940	2,775	5.9
Illinois	588	598	2,542	2,630	2,542	2,630	2,542	2,630	-3.3
Indiana	700	670	3,059	2,990	3,059	2,990	3,059	2,990	2.3
Kansas	5	6	23	27	23	27	23	27	-15.8
<b>Kentucky Total</b>	<b>2,140</b>	<b>2,300</b>	<b>9,264</b>	<b>10,262</b>	<b>9,264</b>	<b>10,262</b>	<b>9,264</b>	<b>10,262</b>	<b>-9.7</b>
Eastern	1,603	1,736	6,927	7,766	6,927	7,766	6,927	7,766	-10.8
Western	537	564	2,337	2,496	2,337	2,496	2,337	2,496	-6.4
Louisiana	74	65	395	356	395	356	395	356	10.9
Maryland	48	40	207	178	207	178	207	178	16.4
Mississippi	97	59	281	284	281	284	281	284	-1.1
Missouri	6	4	25	18	25	18	25	18	37.8
Montana	848	867	3,739	3,812	3,739	3,812	3,739	3,812	-1.9
New Mexico	569	354	2,491	1,587	2,491	1,587	2,491	1,587	56.9
North Dakota	551	539	2,413	2,434	2,413	2,434	2,413	2,434	-0.8
Ohio	467	467	2,043	2,080	2,043	2,080	2,043	2,080	-1.8
Oklahoma	32	30	141	135	141	135	141	135	4.0
<b>Pennsylvania Total</b>	<b>1,243</b>	<b>1,318</b>	<b>5,393</b>	<b>5,867</b>	<b>5,393</b>	<b>5,867</b>	<b>5,393</b>	<b>5,867</b>	<b>-8.1</b>
Anthracite	21	30	93	131	93	131	93	131	-29.3
Bituminous	1,222	1,289	5,301	5,736	5,301	5,736	5,301	5,736	-7.6
Tennessee	48	49	204	217	204	217	204	217	-6.2
Texas	767	713	3,377	3,134	3,377	3,134	3,377	3,134	7.8
Utah	446	505	1,923	2,241	1,923	2,241	1,923	2,241	-14.2
Virginia	480	435	2,093	1,931	2,093	1,931	2,093	1,931	8.4
<b>West Virginia Total</b>	<b>2,987</b>	<b>3,038</b>	<b>13,001</b>	<b>13,517</b>	<b>13,001</b>	<b>13,517</b>	<b>13,001</b>	<b>13,517</b>	<b>-3.8</b>
Northern	805	793	3,456	3,481	3,456	3,481	3,456	3,481	-0.7
Southern	2,182	2,246	9,545	10,035	9,545	10,035	9,545	10,035	-4.9
Wyoming	8,060	8,672	38,800	39,405	38,800	39,405	38,800	39,405	-1.5
<b>Appalachian Total</b>	<b>7,287</b>	<b>7,517</b>	<b>31,655</b>	<b>33,493</b>	<b>31,655</b>	<b>33,493</b>	<b>31,655</b>	<b>33,493</b>	<b>-5.5</b>
<b>Interior Total</b>	<b>2,808</b>	<b>2,711</b>	<b>12,183</b>	<b>12,075</b>	<b>12,183</b>	<b>12,075</b>	<b>12,183</b>	<b>12,075</b>	<b>0.9</b>
<b>Western Total</b>	<b>11,335</b>	<b>11,742</b>	<b>53,129</b>	<b>53,050</b>	<b>53,129</b>	<b>53,050</b>	<b>53,129</b>	<b>53,050</b>	<b>0.1</b>
<b>East of Miss. River</b>	<b>9,209</b>	<b>9,408</b>	<b>39,875</b>	<b>41,894</b>	<b>39,875</b>	<b>41,894</b>	<b>39,875</b>	<b>41,894</b>	<b>-4.8</b>
<b>West of Miss. River</b>	<b>12,221</b>	<b>12,562</b>	<b>57,093</b>	<b>56,725</b>	<b>57,093</b>	<b>56,725</b>	<b>57,093</b>	<b>56,725</b>	<b>0.6</b>
Bituminous and Lignite	21,409	21,940	96,875	98,488	96,875	98,488	96,875	98,488	-1.6
Anthracite	21	30	93	131	93	131	93	131	-29.3
<b>U.S. Total</b>	<b>21,430</b>	<b>21,970</b>	<b>96,968</b>	<b>98,619</b>	<b>96,968</b>	<b>98,619</b>	<b>96,968</b>	<b>98,619</b>	<b>-1.7</b>
Railroad Cars Loaded	132,854	143,028	696,386	711,561	--	--	--	--	--

Source: Energy Information Administration



Volume 77 No. 6

**OUTPUT FOR WEEK ENDED - Feb 07, 2009**

Feb 11, 2009

The net available amount of electric energy distributed by the Total Electric Utility Industry+ for the week ended Saturday, Feb 07, 2009 was 79,889 gigawatthours (GWh), according to the Edison Electric Institute. This is equivalent to 181 on the weekly electric output index.

**WEEKLY ELECTRIC OUTPUT BY GEOGRAPHIC DIVISION**

(48 CONTIGUOUS STATES)

	Week Ended February 07		52 Weeks Ended February 07	
	GWh Output	% Increase Over Corresponding Week of 2008	GWh Output	% Increase Over Corresponding Period of 2008
New England	2,671	4.0	131,105	-2.2
Mid-Atlantic	9,106	8.0	453,572	-1.0
Central Industrial	14,647	2.3	707,996	-1.9
West Central	6,722	-2.0	344,705	-2.3
Southeast	23,199	14.8	1,090,180	-1.6
South Central	9,991	-1.2	597,846	0.2
Rocky Mountain	4,734	-7.2	275,159	-1.3
Pacific Northwest	3,682	-6.8	166,673	3.3
Pacific Southwest	5,137	-4.7	290,936	0.2
Total United States	79,889	3.8	4,058,172	-1.1

**WEEKLY ELECTRIC OUTPUT IN PREVIOUS WEEKS--GWh**

Week Ended	2009	Week Ended	2008	% Inc. (09/08)	52 Weeks Ended	2009	% Inc. (09/08)
Jan 17	83,772	Jan 19	81,351	3.0	Jan 17	4,059,797	-1.1
Jan 24	81,621	Jan 26	86,441	-5.6	Jan 24	4,054,977	-1.4
Jan 31	81,253	Feb 02	81,005	0.3	Jan 31	4,055,225	-1.3
Feb 07	79,889	Feb 09	76,941	3.8	Feb 07	4,058,172	-1.1
Feb 07	476,482	Feb 09	481,026	-0.9	YEAR TO DATE, FIRST 6 WEEKS		

**WEEKLY ELECTRIC OUTPUT INDEX--TOTAL U.S.\***

SEASONALLY ADJUSTED 1982 = 100

Week Ended	2009	Week Ended	2008	Week Ended	2007
Jan 17	191	Jan 19	183	Jan 20	179
Jan 24	186	Jan 26	195	Jan 27	179
Jan 31	182	Feb 02	187	Feb 03	190
Feb 07	181	Feb 09	180	Feb 10	195

\* Excludes Alaska and Hawaii.

+ Includes investor-owned companies, cooperatives and government-owned utilities.

Copyright © 2009 Edison Electric Institute. All rights reserved.

**WEEKLY ELECTRIC OUTPUT BY GEOGRAPHIC DIVISION  
(48 CONTIGUOUS STATES)**

	Week Ended			NMA CUMULATIVE JANUARY WEEK ONE TO			52 Weeks Ended		
	7-Feb 2009 GWh Output	9-Feb 2008 GWh Output	% Increase Over Corresponding Week of 2008	7-Feb 2009 GWh Output	9-Feb 2008 GWh Output	% Increase Over Corresponding Week of 2008	7-Feb 2009 GWh Output	9-Feb 2008 GWh Output	% Increase Over Corresponding Week of 2008
<b>New England</b>	2,671	2,569	4.0%	<b>16,057</b>	<b>15,744</b>	<b>2.0%</b>	131,105	134,066	-2.2%
<b>Mid-Atlantic</b>	9,106	8,433	8.0%	<b>54,965</b>	<b>52,432</b>	<b>4.8%</b>	453,572	457,945	-1.0%
<b>Central Industrial</b>	14,647	14,312	2.3%	<b>87,051</b>	<b>87,596</b>	<b>-0.6%</b>	707,996	721,944	-1.9%
<b>West Central</b>	6,722	6,862	-2.0%	<b>40,938</b>	<b>41,670</b>	<b>-1.8%</b>	344,705	352,851	-2.3%
<b>Southeast</b>	23,199	20,214	14.8%	<b>129,980</b>	<b>130,054</b>	<b>-0.1%</b>	1,090,180	1,107,898	-1.6%
<b>South Central</b>	9,991	10,111	-1.2%	<b>63,051</b>	<b>66,289</b>	<b>-4.9%</b>	597,846	596,774	0.2%
<b>Rocky Mountain</b>	4,734	5,100	-7.2%	<b>29,735</b>	<b>31,063</b>	<b>-4.3%</b>	275,159	278,921	-1.3%
<b>Pacific Northwest</b>	3,682	3,950	-6.8%	<b>23,466</b>	<b>24,469</b>	<b>-4.1%</b>	166,673	161,358	3.3%
<b>Pacific Southwest</b>	5,137	5,390	-4.7%	<b>31,239</b>	<b>31,709</b>	<b>-1.5%</b>	290,936	290,281	0.2%
<b>Total United States *</b>	79,889	76,941	3.8%	<b>476,482</b>	<b>481,026</b>	<b>-0.9%</b>	4,058,172	4,102,038	-1.1%

Notes: EEI output data are an estimate of electricity load made available for distribution derived as weekly net generation + purchases from non-utilities + net imports - exports - sales for resale. It is not meant to be a measure of electricity generation for the U.S. EEI survey data represent the majority of national distribution (large utilities, large government power projects, some independent and large municipal power projects). The remaining segment of the industry (smaller producers) is estimated. Non-utility generation is captured via direct sales to utilities.

\* Excludes Alaska and Hawaii

SOURCE: Edison Electric Institute (EEI), *Weekly Electric Output Report*.

AMERICAN IRON AND STEEL INSTITUTE  
 1140 Connecticut Avenue, Suite 705  
 Washington, D.C. 20036

February 9, 2009

**ESTIMATED WEEKLY RAW STEEL \* PRODUCTION**

Period	Thousand Net Tons	Percent Change from Previous Period	Percent Capability Utilization**	Production by District		
				Week Ending		
				Feb. 7	Jan. 31	
<b><u>Week Ending</u></b>				North East Coast	89	87
				Pgh/Youngstown	85	77
February 7, 2009	1,080	-7.4	45.3	Lake Erie	23	21
February 7, 2008	2,186	-50.6	91.6	Detroit	24	23
January 31, 2009	1,006	-1.9	42.2	Indiana/Chicago	340	322
				Midwest	103	102
<b><u>Year-to-Date+</u></b>				Southern	375	337
February 7, 2009	5,590	-52.4	43.1	Western	41	37
February 7, 2008	11,723	-	90.9	Total	1,080	1,006

\*Raw steel production tonnage included in this report is estimated based on a sampling of steel producers. Therefore, this report should be used primarily to assess production trends. The AISI production report "AIS 7," produced monthly and available by subscription, provides a more accurate summary of steel production based on data supplied by companies representing approximately 75% of U.S. production capacity.

+ Includes revisions for previous months

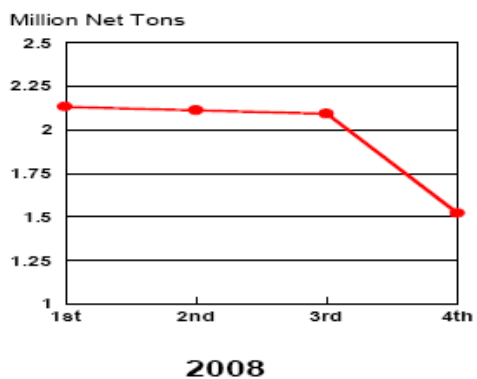
NOTE: Capability for the Third Quarter 2008 is approximately 31.4 million net tons vs 30.1 million net tons for the same period last year, and 31.0 million tons for the second quarter of 2008.

Capability -	2004 approx.	2.2 million tons/week
	2005	2.3
	2006	2.4
	2007	2.4
	2008	2.4

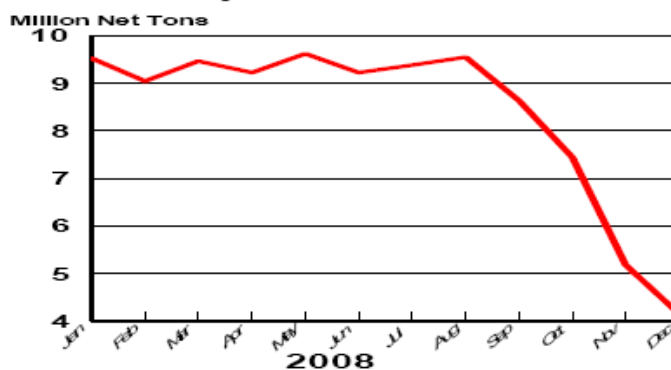
\*Steel in the first solid state after melting suitable for further processing or sale, including ingots, steel for castings and strand or pressure cast blooms, slabs, or other product forms.

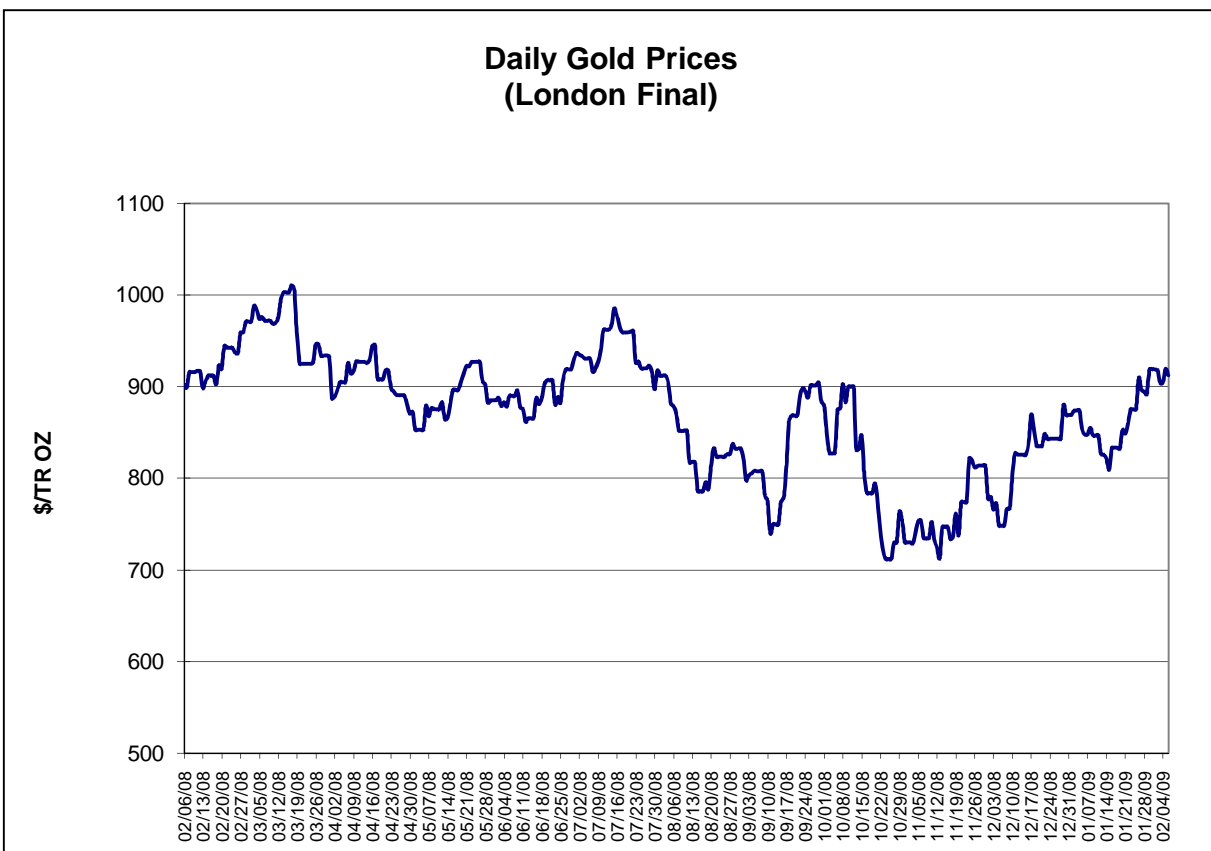
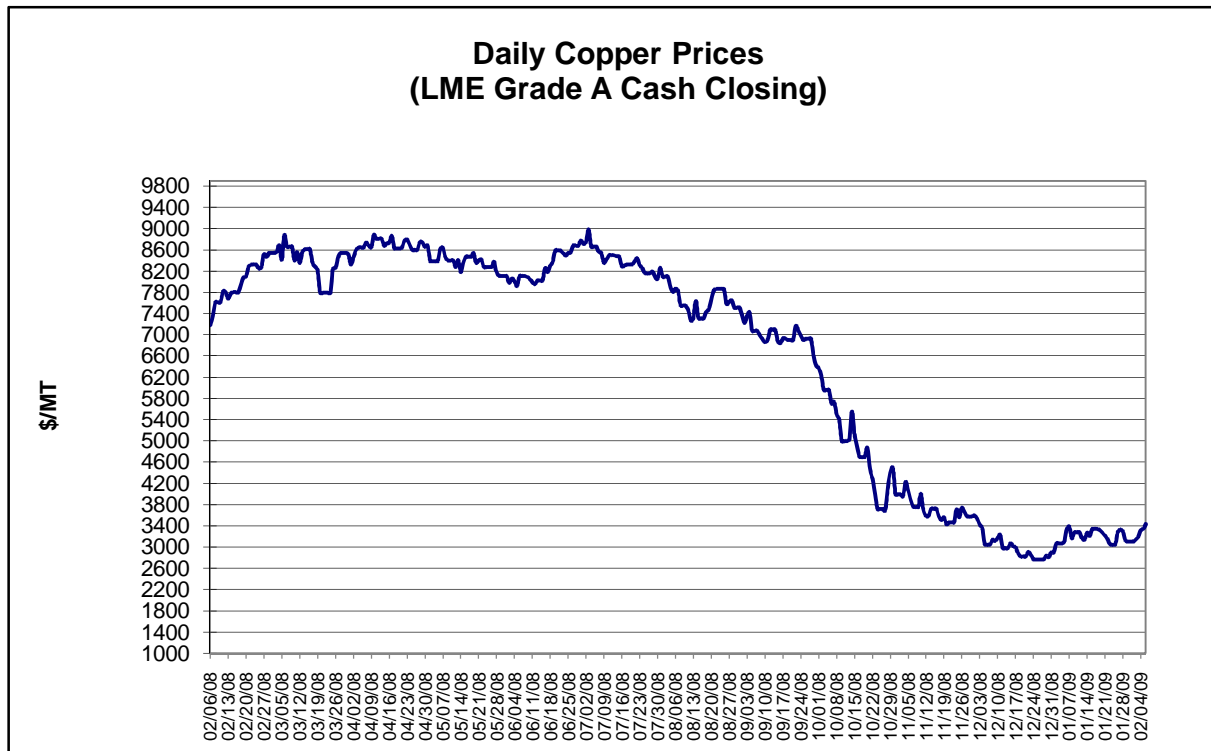
\*\* Based on tonnage capability to produce raw steel for a sustained full order book.

**Average Weekly Raw Steel Production**



**Monthly Raw Steel Production**

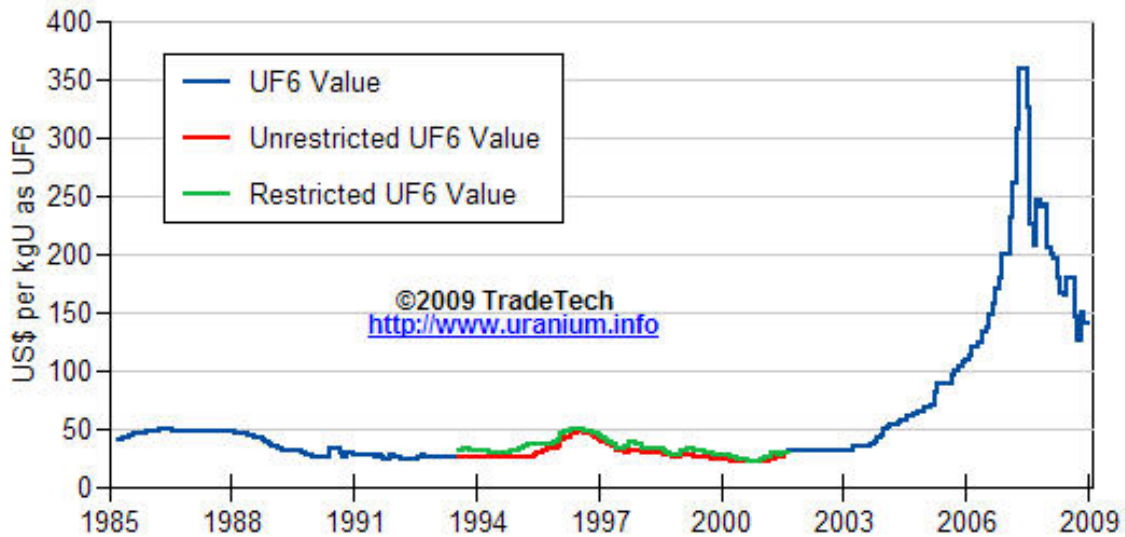




Data reflect closings on weekends and holidays.

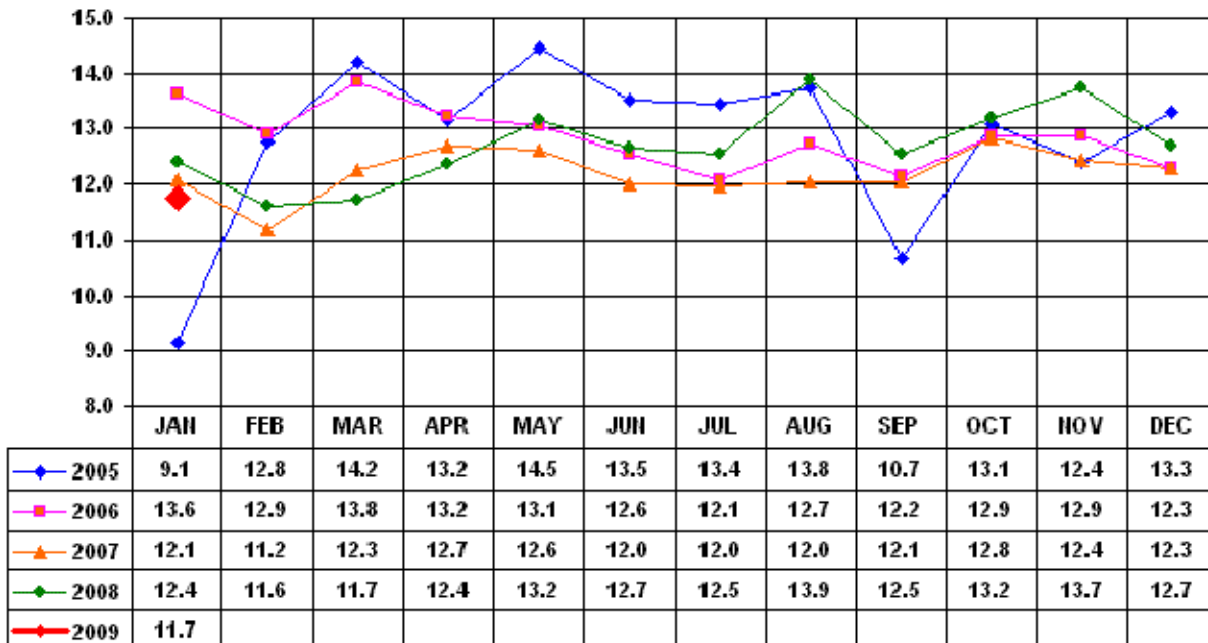
Source: Platts Metals Week

### Trade Tech's Uranium (UF6) Monthly Spot Prices (US\$/kg as UF6)



Source: Trade Tech, Uranium Info Website – <http://www.uranium.info>

### Coal and Coke Monthly Tonnage Indicator for Internal U.S. Waterways

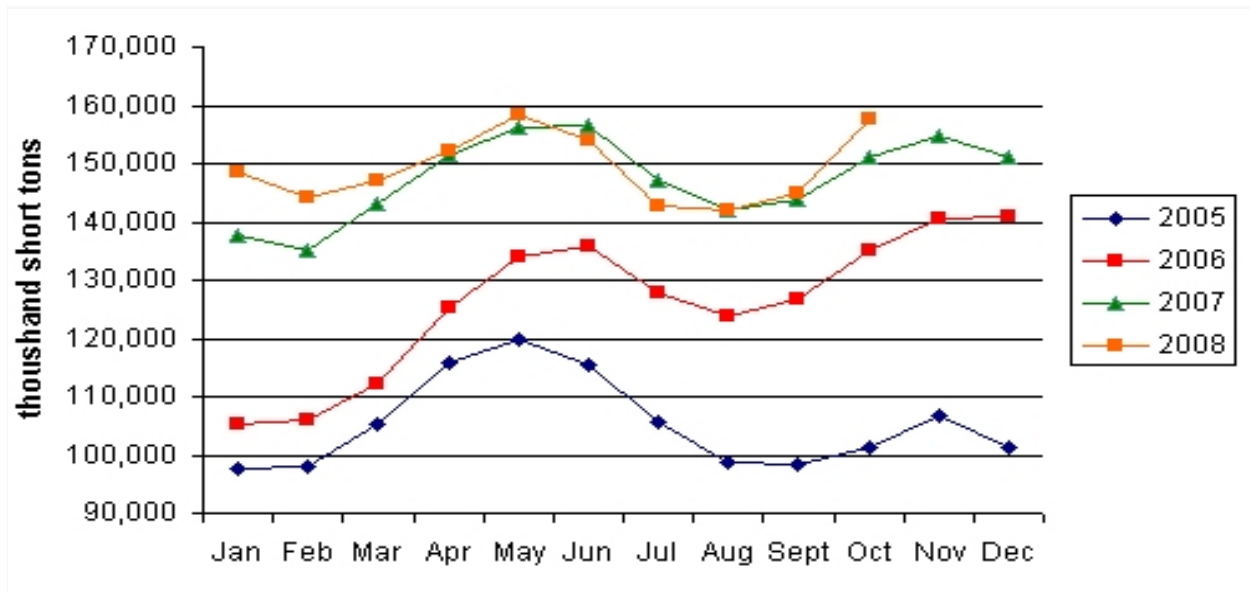


Source: U.S. Army Corps of Engineers, Waterborne Commerce Statistics Center

Average Weekly Coal Commodity Spot Prices (Dollars per Short Ton)					
Week Ended	Central Appalachia 12,500 Btu, 1.2 SO2	Northern Appalachia 13,000 Btu, <3.0 SO2	Illinois Basin 11,800 Btu, 5.0 SO2	Powder River Basin 8,800 Btu, 0.8 SO2	Uinta Basin 11,700 Btu, 0.8 SO2
12/19/08	\$81.55	\$101.50	\$78.00	\$13.00	\$73.00
1/2/09	\$80.85	\$88.75	\$78.00	\$13.00	\$73.00
1/9/09	\$76.80	\$76.00	\$78.00	\$13.00	\$73.00
1/16/09	\$66.45	\$76.00	\$60.00	\$13.00	\$73.00
1/23/09	\$66.45	\$69.00	\$60.00	\$13.00	\$73.00
1/30/09	\$66.45	\$69.00	\$55.00	\$13.00	\$73.00
2/06/09	\$66.45	\$66.00	\$55.00	\$13.00	\$73.00

Source: Energy Information Administration (from Platts *Coal Outlook*, "Weekly Price Survey")

### EIA Electric Power Sector Coal Stocks



Source: Energy Information Administration, *Coal News and Markets Report*

<b>USGS Production of Selected Mineral Commodities</b>	<b>2008 Year to Date - 3rd Quarter</b>	<b>2007 Year to Date - 3rd Quarter</b>	<b>Percent Change</b>
Aluminum, secondary (000 Mt.)	729.0	708.0	3%
Cement (Mil. Mt.)	65.6	70.0	-6%
Gypsum (Mil. Mt.)	14.1	16.4	-14%
Iron Ore (Mil. Mt.)	40.9	38.6	6%
Phosphate rock (Mil. Mt.)	23.0	22.1	4%
Sand & gravel, construction (Mil. Mt.)	754.0	940.0	-20%
Soda ash (Mil. Mt.)	8.4	8.3	1%
Stone, crushed (Mil. Mt.)	1,020.0	1,220.0	-16%
Zinc (000 Mt.)	628.0	574.0	9%

Source: U.S. Geological Survey, Mineral Industry Surveys, *U.S. Production of Selected Mineral Commodities in the Third Quarter 2008, November 2008*