
National Mining Association

Weekly Statistical Summary

February 15, 2008 Edition
(Data for Week Ending February 9, 2008)

Prepared by
National Mining Association



Suite 500 East, 101 Constitution Avenue, NW
Washington, DC, 20001
Phone (202) 463-2600
Visit us at <http://www.nma.org>

NMA Weekly Statistical Summary

Vol. 46, No. 06
Dated 02/15/08

PRODUCTION, CONSUMPTION & TRADE						
	Week Ended			Cumulative Jan 1 to		
	02/09/08	02/10/07	% Chng	02/09/08	02/10/07	% Chng
EIA Coal Production (000 Tons):						
Week Ended/Year to Date	22,500	22,023	2.2%	128,722	129,036	-0.2%
52 Weeks Ended	1,146,238	1,158,009	-1.0%			
Month Ended -- January						
	January 08/07		% Chng	Jan - Jan 08/07		% Chng
	100,712	99,361	1.4%	100,712	99,361	1.4%
MONTH ENDED AND CUMULATIVE NUMBERS ARE PRELIMINARY AND SUBJECT TO CHANGE						
DOC Bituminous Coal Trade (000 Tons)						
Exports:						
	November 07/06		% Chng	Jan - Nov 07/06		% Chng
Metallurgical	3,096	2,556	21.1%	29,528	25,353	16.5%
Steam	3,119	2,207	41.3%	23,273	19,810	17.5%
Imports:						
	2,889	2,630	9.8%	33,535	33,156	1.1%
EEI Electric Output (Mil. Kwh)						
	Week Ended			Cumulative Jan 1 to		
	02/09/08	02/10/07	% Chng	02/09/08	02/10/07	% Chng
	76,941	84,063	-8.5%	481,026	479,600	0.3%
AISI Raw Steel Output (000 Tons)						
	2,118	2,126	-0.4%	12,514	11,511	8.7%
EIA U.S. PETROLEUM DATA						
4-Week Averages 000 Barrels per Day						
PETROLEUM SUPPLY:						
	Week Ending			Cumulative Daily Averages		
	02/08/08	02/08/07	% Chng	2008	2007	% Chng
Domestic Crude	5,024	5,184	-3.1	--	--	--
Net Imports (Incl. SPR)	10,090	9,893	2.0	--	--	--
SPR Stocks W/D or Added	-10	0	--	--	--	--
Other Stocks W/D or added	-499	-226	--	--	--	--
Natural Gas Liquids Prod.	2,561	2,242	14.2	--	--	--

Cumulative daily petroleum averages will be shown beginning with week ending April 4, 2008 data.



NMA
THE AMERICAN RESOURCE

National Mining Association Web Site: [http:// www.nma.org](http://www.nma.org)

EIA Estimated Weekly U.S. Coal Production Overview (Thousand Short Tons)

Coal-Producing Region and State	Week Ended			Year to Date			Percent Change	52 Weeks Ended		Percent Change
	2/9/2008	2/2/2008	2/10/2007	2/9/2008	2/9/2007	2/9/2008		2/10/2007		
Alabama	389	391	402	2,212	2,361	-6.3	19,034	18,833	1.1	
Alaska	25	25	35	138	208	-33.6	1,247	1,477	-15.6	
Arizona	121	122	159	706	933	-24.4	7,638	8,179	-6.6	
Arkansas	2	2	1	12	8	50.7	85	29	193.1	
Colorado	706	709	625	4,005	3,554	12.7	36,952	36,709	0.7	
Illinois	679	682	746	3,833	4,330	-11.5	33,625	33,297	1.0	
Indiana	713	716	705	4,069	4,105	-0.9	35,802	35,165	1.8	
Kansas	10	10	8	55	49	13.0	447	448	-0.1	
Kentucky Total	2,289	2,298	2,302	13,032	13,445	-3.1	115,042	119,754	-3.9	
Eastern	1,671	1,678	1,715	9,529	10,038	-5.1	86,057	92,416	-6.9	
Western	618	620	588	3,503	3,407	2.8	28,985	27,339	6.0	
Louisiana	91	72	88	502	386	29.8	3,246	4,083	-20.5	
Maryland	41	41	47	233	273	-14.9	2,548	4,669	-45.4	
Mississippi	50	57	70	341	352	-3.1	3,614	3,714	-2.7	
Missouri	4	4	5	25	27	-8.1	231	351	-34.2	
Montana	835	839	788	4,754	4,460	6.6	42,368	41,935	1.0	
New Mexico	459	461	429	2,625	2,507	4.7	24,513	25,712	-4.7	
North Dakota	578	580	603	3,311	3,550	-6.7	29,287	30,325	-3.4	
Ohio	466	468	438	2,655	2,547	4.3	22,289	22,412	-0.6	
Oklahoma	37	37	32	212	190	11.5	1,757	1,925	-8.7	
Pennsylvania Total	1,297	1,302	1,361	7,365	7,970	-7.6	64,633	66,306	-2.5	
Anthracite	35	35	31	196	185	6.3	1,571	1,535	2.4	
Bituminous	1,262	1,267	1,330	7,169	7,786	-7.9	63,062	64,771	-2.6	
Tennessee	48	48	55	272	326	-16.6	2,543	2,778	-8.5	
Texas	813	816	775	4,625	4,375	5.7	42,192	45,020	-6.3	
Utah	448	449	476	2,541	2,776	-8.5	23,361	25,607	-8.8	
Virginia	505	507	566	2,865	3,290	-12.9	26,434	29,500	-10.4	
Washington	--	--	--	--	--	--	0	2,221	-100.0	
West Virginia Total	3,035	3,047	3,140	17,248	18,278	-5.6	153,185	152,319	0.6	
Northern	959	963	936	5,398	5,456	-1.1	44,364	42,553	4.3	
Southern	2,076	2,084	2,204	11,850	12,822	-7.6	108,821	109,766	-0.9	
Wyoming	8,859	8,759	8,166	51,086	48,736	4.8	454,167	445,242	2.0	
Appalachian Total	7,451	7,482	7,723	42,380	45,084	-6.0	376,721	389,233	-3.2	
Interior Total	3,018	3,017	3,019	17,176	17,229	-0.3	149,984	151,369	-0.9	
Western Total	12,031	11,944	11,281	69,167	66,724	3.7	619,533	617,407	0.3	
East of Miss. River	9,512	9,558	9,832	54,125	57,278	-5.5	478,747	488,747	-2.0	
West of Miss. River	12,988	12,885	12,191	74,597	71,759	4.0	667,491	669,262	-0.3	
Bituminous and Lignite	22,465	22,408	21,991	128,526	128,852	-0.3	1,144,666	1,156,474	-1.0	
Anthracite	35	35	31	196	185	6.3	1,571	1,535	2.4	
U.S. Total	22,500	22,443	22,023	128,722	129,036	-0.2	1,146,238	1,158,009	-1.0	
Railroad Cars Loaded	143,386	143,028	137,965	854,947	837,868	2.0	7,421,111	7,436,592	-0.2	

Source: Energy Information Administration



Volume 76 No. 6

OUTPUT FOR WEEK ENDED - Feb 09, 2008

Feb 13, 2008

The net available amount of electric energy distributed by the Total Electric Utility Industry+ for the week ended Saturday, **Feb 09, 2008** was **76,941** gigawatthours (GWh), according to the Edison Electric Institute. This is equivalent to **180** on the weekly electric output index.

WEEKLY ELECTRIC OUTPUT BY GEOGRAPHIC DIVISION
(48 CONTIGUOUS STATES)

	Week Ended February 09		52 Weeks Ended February 09	
	GWh Output	% Increase Over Corresponding Week of 2007	GWh Output	% Increase Over Corresponding Period of 2007
New England	2,569	-11.1	134,066	1.3
Mid-Atlantic	8,433	-15.3	457,945	2.6
Central Industrial	14,312	-12.9	721,944	3.0
West Central	6,862	-6.7	352,851	1.9
Southeast	20,214	-14.3	1,107,898	2.5
South Central	10,111	-3.2	596,774	-1.9
Rocky Mountain	5,100	7.8	278,921	5.9
Pacific Northwest	3,950	16.1	161,358	4.9
Pacific Southwest	5,390	2.1	290,281	-0.9
Total United States	76,941	-8.5	4,102,038	1.9

WEEKLY ELECTRIC OUTPUT IN PREVIOUS WEEKS--GWh

Week Ended	2008	Week Ended	2007	% Inc. (08/07)	52 Weeks Ended	2008	% Inc. (08/07)
Jan 19	81,351	Jan 20	81,592	-0.3	Jan 19	4,106,222	2.7
Jan 26	86,441	Jan 27	81,048	6.7	Jan 26	4,111,615	2.6
Feb 02	81,005	Feb 03	83,459	-2.9	Feb 02	4,109,161	2.3
Feb 09	76,941	Feb 10	84,063	-8.5	Feb 09	4,102,038	1.9
Feb 09	481,026	Feb 10	479,600	0.3	YEAR TO DATE, FIRST 6 WEEKS		

WEEKLY ELECTRIC OUTPUT INDEX--TOTAL U.S.*
SEASONALLY ADJUSTED 1982 = 100

Week Ended	2008	Week Ended	2007	Week Ended	2006
Jan 19	183	Jan 20	179	Jan 21	165
Jan 26	195	Jan 27	179	Jan 28	166
Feb 02	187	Feb 03	190	Feb 04	169
Feb 09	180	Feb 10	195	Feb 11	178

* Excludes Alaska and Hawaii.

+ Includes investor-owned companies, cooperatives and government-owned utilities.

Copyright © 2008 Edison Electric Institute. All rights reserved.

WEEKLY ELECTRIC OUTPUT BY GEOGRAPHIC DIVISION (48 CONTIGUOUS STATES)

	Week Ended			NMA CUMULATIVE JANUARY 1 to			52 Weeks Ended		
	9-Feb 2008 GWh Output	10-Feb 2007 GWh Output	% Increase Over Corresponding Week of 2007	9-Feb 2008 GWh Output	10-Feb 2007 GWh Output	% Increase Over Corresponding Week of 2007	9-Feb 2008 GWh Output	10-Feb 2007 GWh Output	% Increase Over Corresponding Week of 2007
New England	2,569	2,889	-11.1%	15,744	16,123	-2.4%	134,066	132,406	1.3%
Mid-Atlantic	8,433	9,956	-15.3%	52,432	53,155	-1.4%	457,945	446,492	2.6%
Central Industrial	14,312	16,428	-12.9%	87,596	87,791	-0.2%	721,944	700,759	3.0%
West Central	6,862	7,357	-6.7%	41,670	41,036	1.5%	352,851	346,285	1.9%
Southeast	20,214	23,575	-14.3%	130,054	128,815	1.0%	1,107,898	1,080,929	2.5%
South Central	10,111	10,444	-3.2%	66,289	67,650	-2.0%	596,774	608,271	-1.9%
Rocky Mountain	5,100	4,732	7.8%	31,063	29,574	5.0%	278,921	263,353	5.9%
Pacific Northwest	3,950	3,402	16.1%	24,469	22,189	10.3%	161,358	153,872	4.9%
Pacific Southwest	<u>5,390</u>	<u>5,280</u>	2.1%	<u>31,709</u>	<u>33,266</u>	-4.7%	<u>290,281</u>	<u>292,786</u>	-0.9%
Total United States *	76,941	84,063	-8.5%	481,026	479,599	0.3%	4,102,038	4,025,153	1.9%

Notes: EEI output data are an estimate of electricity load made available for distribution derived as weekly net generation + purchases from non-utilities + net imports - exports - sales for resale. It is not meant to be a measure of electricity generation for the U.S. EEI survey data represent the majority of national distribution (large utilities, large government power projects, some independent and large municipal power projects). The remaining segment of the industry (smaller producers) is estimated. Non-utility generation is captured via direct sales to utilities.

* Excludes Alaska and Hawaii

** Less than one-tenth of one percent

SOURCE: Edison Electric Institute (EEI), *Weekly Electric Output Report*.

AMERICAN IRON AND STEEL INSTITUTE
 1140 Connecticut Avenue, Suite 705
 Washington, D.C. 20036

February 11, 2008

ESTIMATED WEEKLY RAW STEEL* PRODUCTION

<u>Period</u>	<u>Thousand Net Tons</u>	<u>Percent Change from Previous Period</u>	<u>Percent Capability Utilization**</u>	<u>Production by District</u>	
				<u>Week Ending</u>	
				<u>Feb 9</u>	<u>Feb 2</u>
<u>Week Ending</u>					
Feb 9, 2008	2,118	-0.7	88.8	196	195
Feb 9, 2007	2,126	-0.3	89.5	217	221
Feb 2, 2008	2,134	1.5	89.5	73	89
				100	101
				515	493
				267	268
				659	675
				<u>91</u>	<u>92</u>
				2118	2134
<u>Year-to-Date+</u>					
Feb 9, 2008	12,514	8.7	87.4		
Feb 9, 2007	11,511	-	87.0		

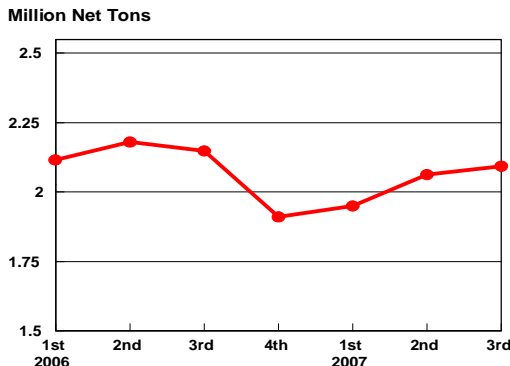
*Raw steel production tonnage included in this report is estimated based on a sampling of steel producers. Therefore, this report should be used primarily to assess production trends. The AISI production report "AIS 7," produced monthly and available by subscription, provides a more accurate summary of steel production based on data supplied by companies representing approximately 75% of U.S. production capacity.

+Includes revisions for previous months

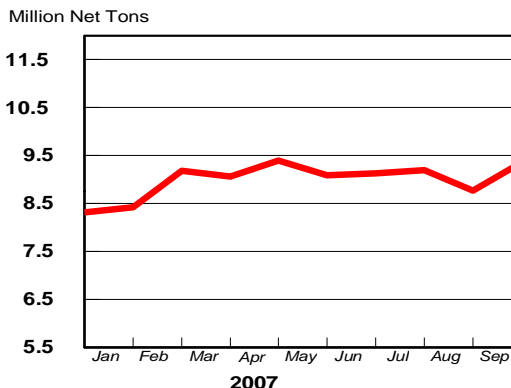
NOTE: Capability for the Fourth Quarter 2007 is approximately 31.3 million net tons vs 30.7 million net tons for the same period last year, and 30.1 million tons for the third quarter of 2007.

Capability -	2003 approx.	2.3 million tons/week
	2004	2.2
	2005	2.3
	2006	2.4
	2007	2.4

Average Weekly Raw Steel Production

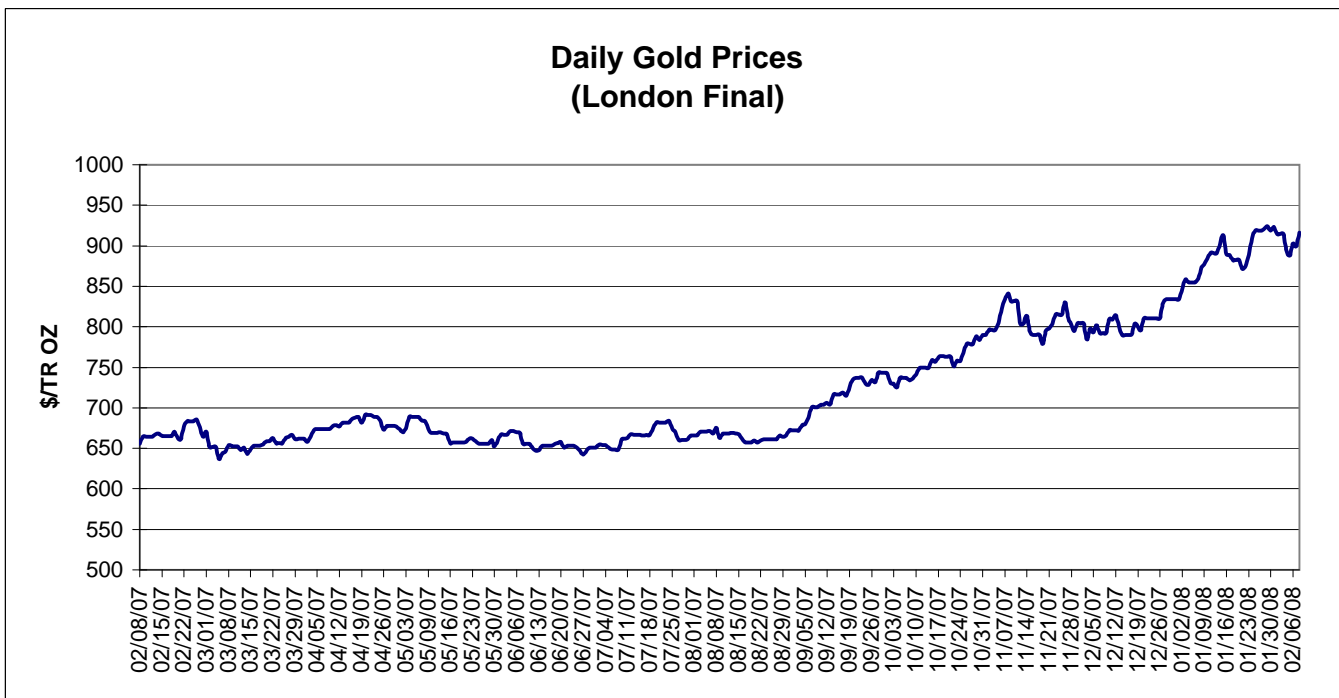
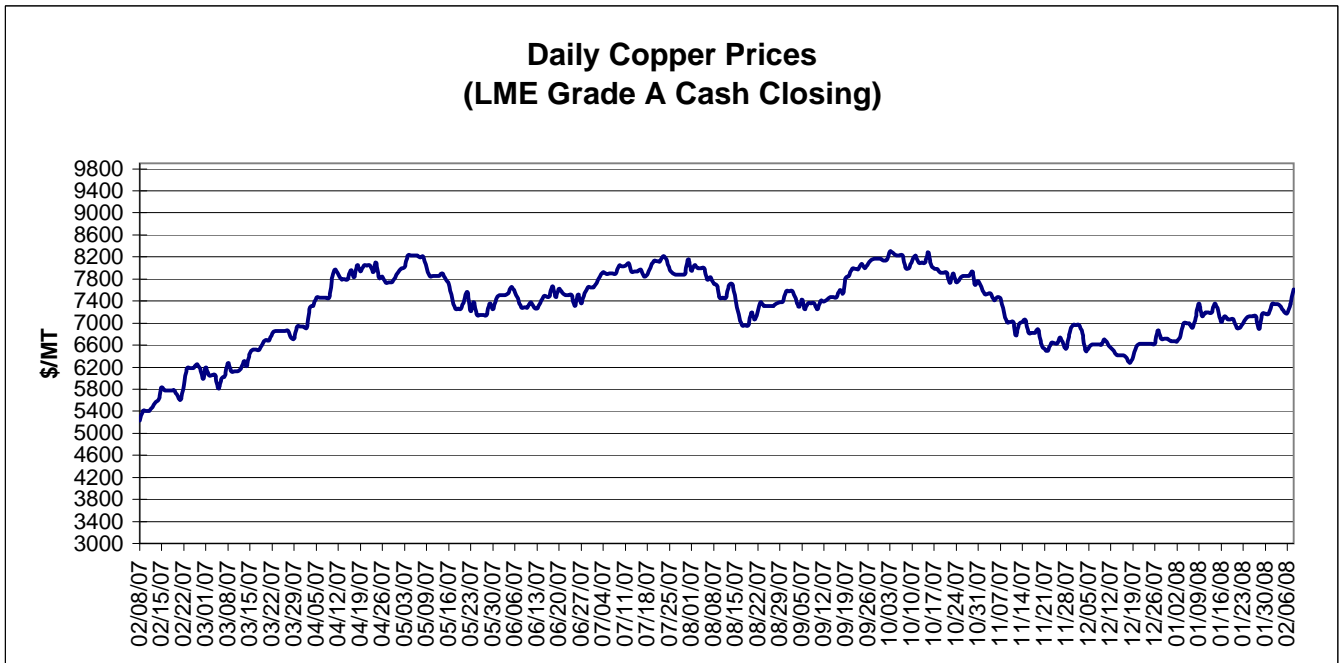


MONTHLY RAW STEEL PRODUCTION



*Steel in the first solid state after melting suitable for further processing or sale, including ingots, steel for castings and strand or pressure cast blooms, slabs, or other product forms.

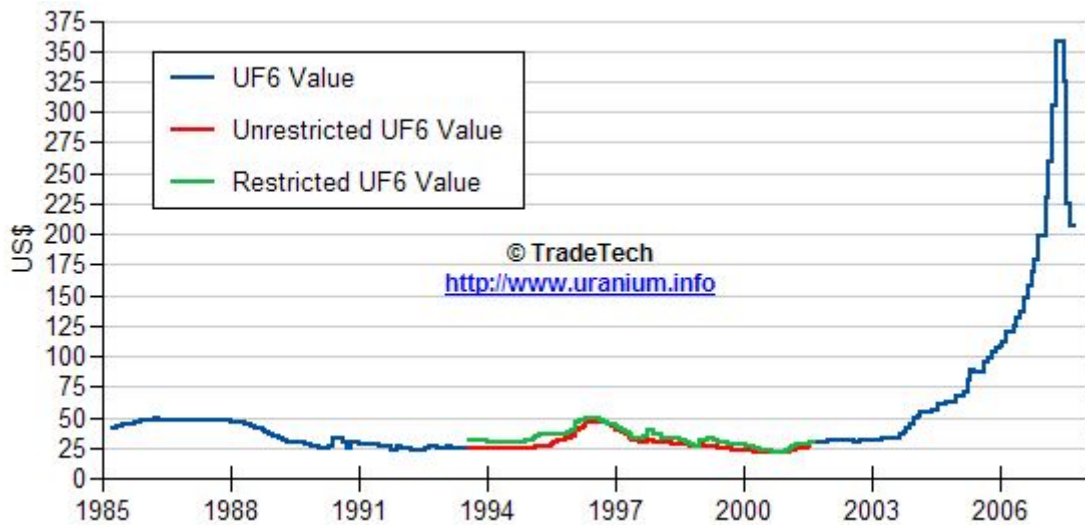
** Based on tonnage capability to produce raw steel for a sustained full order book.



Data reflect closings on weekends and holidays.

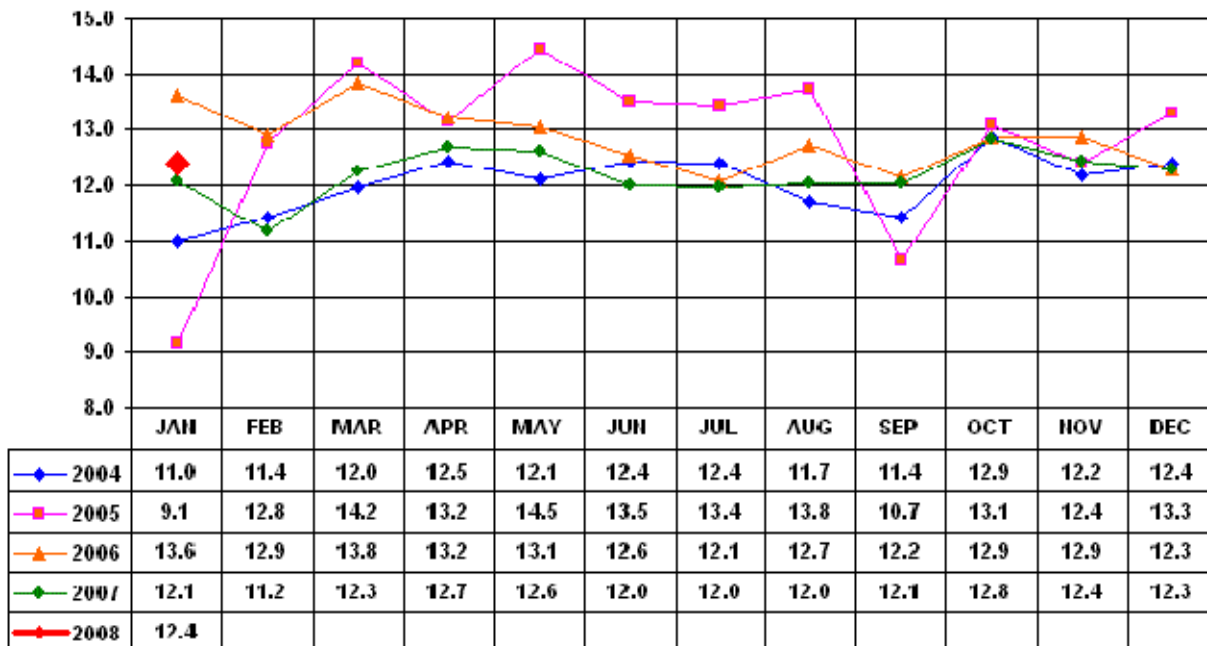
Source: Platts Metals Week

Trade Tech's Uranium (UF6) Monthly Spot Prices (US\$/kg as UF6)



Source: Trade Tech, Uranium Info Website – <http://www.uranium.info>

Coal and Coke Monthly Tonnage Indicator for Internal U.S. Waterways



Source: U.S. Army Corps of engineers, Waterborne Commerce Statistics Center

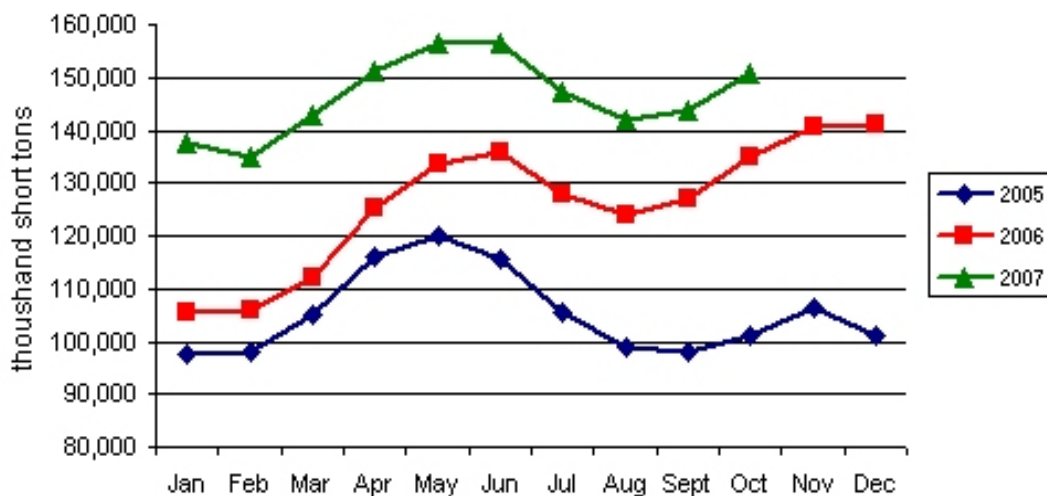
EIA Weekly Spot Coal Prices

The following average spot coal prices appear in the graphic below, for the previous and most recent weeks:

Week Ended	Central Appalachia 12,500 Btu, 1.2 SO2	Northern Appalachia 13,000 Btu, <3.0 SO2	Illinois Basin 11,800 Btu, 5.0 SO2	Powder River Basin 8,800 Btu, 0.8 SO2	Uinta Basin 11,700 Btu, 0.8 SO2
04-Jan-08	\$58.30	\$61.75	\$34.00	\$11.60	\$24.00
11-Jan-08	\$58.30	\$61.75	\$34.00	\$11.65	\$24.00
18-Jan-08	\$58.30	\$61.75	\$34.00	\$11.85	\$33.00
25-Jan-08	\$59.90	\$63.00	\$34.00	\$12.30	\$33.00
01-Feb-08	\$59.90	\$63.00	\$36.00	\$12.55	\$33.00
08-Feb-08	\$59.90	\$70.00	\$36.00	\$13.10	\$33.00

Source: Energy Information Administration (from Platts *Coal Outlook*, "Weekly Price Survey")

Electric Power Sector Coal Stocks



Source: Energy Information Administration