
National Mining Association

Weekly Statistical Summary

February 20, 2009 Edition
(Data for Week Ending February 14, 2009)

Prepared by
National Mining Association



Suite 500 East, 101 Constitution Avenue, NW
Washington, DC, 20001
Phone (202) 463-2600
Visit us at <http://www.nma.org>

NMA Weekly Statistical Summary

Vol. 47, No. 7
Dated 02/20/09

PRODUCTION, CONSUMPTION & TRADE						
	Week Ended			* Cumulative Jan 1 to		
	02/14/09	02/16/08	% Chng	02/14/09	02/14/08	% Chng
EIA Coal Production (000 Tons):						
Week Ended/Year to Date	22,573	22,338	1.1%	140,994	142,900	-1.3%
52 Weeks Ended	1,162,807	1,142,341	1.8%			
Month Ended -- January						
	January 09/08		% Chng	Jan - Jan 09/08		% Chng
	96,968	98,619	-1.7%	96,968	98,619	-1.7%
MONTH ENDED AND CUMULATIVE NUMBERS ARE PRELIMINARY AND SUBJECT TO CHANGE						
DOC Bituminous Coal Trade (000 Tons)						
Exports:	Dec 08/07		% Chng	Jan - Dec 08/07		% Chng
	Metallurgical	2,257	2,753	-18.0%	42,620	32,280
Steam *	4,317	3,095	39.5%	38,469	26,368	45.9%
Imports:	3,192	2,811	13.6%	34,208	36,347	-5.9%
EI Electric Output (Mil. Kwh)						
	Week Ended			* Cumulative Jan 1 to		
	02/14/09	02/16/08	% Chng	02/14/09	02/16/08	% Chng
EI Electric Output (Mil. Kwh)	71,694	79,368	-9.7%	548,176	560,394	-2.2%
AISI Raw Steel Output (000 Tons)	1,083	2,186	-50.5%	6,673	13,909	-52.0%
EIA U.S. PETROLEUM DATA						
4-Week Averages 000 Barrels per Day						
PETROLEUM SUPPLY:						
	Week Ending			Cumulative Daily Averages		
	02/13/09	02/13/08	% Chng	2008	2007	% Chng
Domestic Crude	5,233	5,102	2.6			
Net Imports (Incl. SPR)	9,519	9,816	-3.0			
SPR Stocks W/D or Added	-67	-33	--			
Other Stocks W/D or added	-642	-266	--			
Natural Gas Liquids Prod.	2,064	2,159	-4.4			

Cumulative daily petroleum averages will be shown beginning with week ending April 3, 2009 data. * Excludes lignite & anthracite



NMA

THE AMERICAN RESOURCE National Mining Association Web Site: [http:// www.nma.org](http://www.nma.org)

EIA Estimated Weekly U.S. Coal Production Overview (Thousand Short Tons)

Coal-Producing Region and State	Week Ended			Year to Date		Percent Change	52 Weeks Ended		Percent Change
	2/14/2009	2/7/2009	2/16/2008	2/14/2009	2/14/2008		2/14/2009	2/16/2008	
Alabama	413	397	446	2,596	2,813	-7.7	20,474	19,662	4.1
Alaska	25	24	30	155	189	-17.8	1,331	1,277	4.3
Arizona	167	161	149	1,044	958	9.0	8,087	7,885	2.6
Arkansas	1	1	1	7	7	-5.3	58	81	-28.2
Colorado	673	647	650	4,260	4,051	5.2	33,767	36,386	-7.2
Illinois	591	568	614	3,702	3,836	-3.5	31,695	31,652	0.1
Indiana	704	677	688	4,440	4,341	2.3	36,017	34,854	3.3
Kansas	5	5	6	33	39	-16.4	279	404	-30.9
Kentucky Total	2,152	2,068	2,364	13,483	14,904	-9.5	117,060	115,015	1.8
Eastern	1,612	1,549	1,784	10,089	11,269	-10.5	87,996	86,987	1.2
Western	539	518	580	3,395	3,635	-6.6	29,063	28,028	3.7
Louisiana	92	61	81	547	515	6.2	3,964	3,191	24.2
Maryland	48	46	41	302	258	16.7	2,600	2,249	15.6
Mississippi	56	56	52	393	390	0.8	2,740	3,516	-22.1
Missouri	6	6	4	36	26	38.1	261	232	12.9
Montana	853	820	891	5,412	5,559	-2.7	43,888	43,880	*
New Mexico	572	550	363	3,613	2,301	57.0	28,814	23,901	20.6
North Dakota	554	533	554	3,500	3,522	-0.6	29,502	29,111	1.3
Ohio	469	451	480	2,963	3,022	-2.0	25,341	22,717	11.6
Oklahoma	32	31	31	204	196	4.3	1,476	1,629	-9.4
Pennsylvania Total	1,250	1,202	1,355	7,845	8,528	-8.0	63,550	64,671	-1.7
Anthracite	22	21	30	135	191	-29.3	1,463	1,550	-5.6
Bituminous	1,229	1,181	1,325	7,710	8,337	-7.5	62,087	63,121	-1.6
Tennessee	48	46	50	298	315	-5.6	2,423	2,600	-6.8
Texas	771	741	733	4,889	4,572	6.9	38,585	41,504	-7.0
Utah	449	431	519	2,804	3,259	-14.0	23,252	24,433	-4.8
Virginia	483	464	448	3,039	2,809	8.2	24,952	24,500	1.8
West Virginia Total	3,004	2,887	3,123	18,891	19,647	-3.8	157,936	152,583	3.5
Northern	809	778	815	5,043	5,081	-0.7	40,519	41,241	-1.8
Southern	2,194	2,109	2,308	13,848	14,566	-4.9	117,416	111,341	5.5
Wyoming	9,155	8,583	8,664	56,538	56,842	-0.5	464,752	454,409	2.3
Appalachian Total	7,326	7,041	7,727	46,023	48,662	-5.4	385,272	375,968	2.5
Interior Total	2,798	2,664	2,791	17,646	17,557	0.5	144,141	145,091	-0.7
Western Total	12,448	11,748	11,820	77,326	76,681	0.8	633,394	621,282	1.9
East of Miss. River	9,218	8,861	9,662	57,953	60,863	-4.8	484,789	474,018	2.3
West of Miss. River	13,356	12,593	12,677	83,041	82,036	1.2	678,018	668,323	1.5
Bituminous and Lignite	22,551	21,433	22,308	140,859	142,709	-1.3	1,161,344	1,140,791	1.8
Anthracite	22	21	30	135	191	-29.3	1,463	1,550	-5.6
U.S. Total	22,573	21,453	22,338	140,994	142,900	-1.3	1,162,807	1,142,341	1.8
Railroad Cars Loaded	145,999	134,071	146,088	976,456	1,001,035	-2.5	7,627,990	7,434,123	2.6

Source: Energy Information Administration



WEEKLY ELECTRIC OUTPUT

Essential Energy Information from EEI's Statistics Department

Volume 77 No. 7

OUTPUT FOR WEEK ENDED - Feb 14, 2009

Feb 18, 2009

The net available amount of electric energy distributed by the Total Electric Utility Industry* for the week ended Saturday, Feb 14, 2009 was 71,694 gigawatthours (GWh), according to the Edison Electric Institute. This is equivalent to 163 on the weekly electric output index.

WEEKLY ELECTRIC OUTPUT BY GEOGRAPHIC DIVISION

(48 CONTIGUOUS STATES)

	Week Ended February 14		52 Weeks Ended February 14	
	GWh Output	% Increase Over Corresponding Week of 2008	GWh Output	% Increase Over Corresponding Period of 2008
New England	2,468	-8.2	130,886	-2.3
Mid-Atlantic	8,185	-11.1	452,545	-1.1
Central Industrial	13,180	-13.8	705,889	-2.2
West Central	6,384	-11.2	343,899	-2.6
Southeast	17,955	-13.1	1,087,478	-1.7
South Central	9,515	-8.9	596,912	0.3
Rocky Mountain	5,005	0.4	275,180	-1.4
Pacific Northwest	3,722	2.4	166,759	3.1
Pacific Southwest	5,280	0.3	290,950	0.2
Total United States	71,694	-9.7	4,050,498	-1.2

WEEKLY ELECTRIC OUTPUT IN PREVIOUS WEEKS--GWh

Week Ended	2009	Week Ended	2008	% Inc. (09/08)	52 Weeks Ended	2009	% Inc. (09/08)
Jan 24	81,621	Jan 26	86,441	-5.6	Jan 24	4,054,977	-1.4
Jan 31	81,253	Feb 02	81,005	0.3	Jan 31	4,055,225	-1.3
Feb 07	79,889	Feb 09	76,941	3.8	Feb 07	4,058,172	-1.1
Feb 14	71,694	Feb 16	79,368	-9.7	Feb 14	4,050,498	-1.2
Feb 14	548,176	Feb 16	560,394	-2.2	YEAR TO DATE, FIRST 7 WEEKS		

WEEKLY ELECTRIC OUTPUT INDEX--TOTAL U.S.*

SEASONALLY ADJUSTED 1982 = 100

Week Ended	2009	Week Ended	2008	Week Ended	2007
Jan 24	186	Jan 26	195	Jan 27	179
Jan 31	182	Feb 02	187	Feb 03	190
Feb 07	181	Feb 09	180	Feb 10	195
Feb 14	163	Feb 16	186	Feb 17	194

* Excludes Alaska and Hawaii.

+ Includes investor-owned companies, cooperatives and government-owned utilities.

Copyright © 2009 Edison Electric Institute. All rights reserved.

**WEEKLY ELECTRIC OUTPUT BY GEOGRAPHIC DIVISION
(48 CONTIGUOUS STATES)**

	Week Ended			NMA CUMULATIVE JANUARY WEEK ONE TO			52 Weeks Ended		
	14-Feb 2009 GWh Output	16-Feb 2008 GWh Output	% Increase Over Corresponding Week of 2008	14-Feb 2009 GWh Output	16-Feb 2008 GWh Output	% Increase Over Corresponding Week of 2008	14-Feb 2009 GWh Output	16-Feb 2008 GWh Output	% Increase Over Corresponding Week of 2008
New England	2,468	2,687	-8.2%	18,525	18,431	0.5%	130,886	133,922	-2.3%
Mid-Atlantic	8,185	9,213	-11.2%	63,150	61,645	2.4%	452,545	457,503	-1.1%
Central Industrial	13,180	15,287	-13.8%	100,231	102,883	-2.6%	705,889	721,705	-2.2%
West Central	6,384	7,190	-11.2%	47,322	48,860	-3.1%	343,899	352,931	-2.6%
Southeast	17,955	20,657	-13.1%	147,935	150,711	-1.8%	1,087,478	1,106,185	-1.7%
South Central	9,515	10,449	-8.9%	72,566	76,738	-5.4%	596,912	595,065	0.3%
Rocky Mountain	5,005	4,983	0.4%	34,740	36,046	-3.6%	275,180	279,167	-1.4%
Pacific Northwest	3,722	3,636	2.4%	27,188	28,105	-3.3%	166,759	161,782	3.1%
Pacific Southwest	5,280	5,266	0.3%	36,519	36,975	-1.2%	290,950	290,261	0.2%
Total United States *	71,694	79,368	-9.7%	548,176	560,394	-2.2%	4,050,498	4,098,521	-1.2%

Notes: EEI output data are an estimate of electricity load made available for distribution derived as weekly net generation + purchases from non-utilities + net imports - exports - sales for resale. It is not meant to be a measure of electricity generation for the U.S. EEI survey data represent the majority of national distribution (large utilities, large government power projects, some independent and large municipal power projects). The remaining segment of the industry (smaller producers) is estimated. Non-utility generation is captured via direct sales to utilities.

* Excludes Alaska and Hawaii

SOURCE: Edison Electric Institute (EEI), *Weekly Electric Output Report*.

AMERICAN IRON AND STEEL INSTITUTE
 1140 Connecticut Avenue, Suite 705
 Washington, D.C. 20036

February 16, 2009

ESTIMATED WEEKLY RAW STEEL * PRODUCTION

Period	Thousand Net Tons	Percent Change from Previous Period	Percent Capability Utilization**	Production by District		
				Week Ending Feb. 14	Week Ending Feb. 7	
<u>Week Ending</u>				North East Coast	90	89
				Pgh/Youngstown	84	85
February 14, 2009	1,083	0.3	45.4	Lake Erie	15	23
February 14, 2008	2,186	-50.5	91.6	Detroit	24	24
February 7, 2009	1,080	7.4	45.3	Indiana/Chicago	341	340
				Midwest	105	103
				Southern	384	375
				Western	40	41
				Total	1,083	1,080
<u>Year-to-Date+</u>						
February 14, 2009	6,673	-52.1	44.1			
February 14, 2008	13,909	-	90.9			

*Raw steel production tonnage included in this report is estimated based on a sampling of steel producers. Therefore, this report should be used primarily to assess production trends. The AISI production report "AIS 7," produced monthly and available by subscription, provides a more accurate summary of steel production based on data supplied by companies representing approximately 75% of U.S. production capacity.

+ Includes revisions for previous months

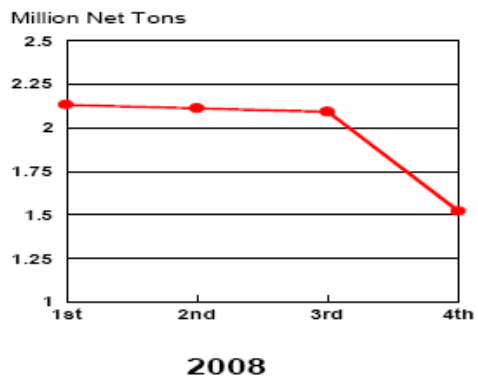
NOTE: Capability for the Third Quarter 2008 is approximately 31.4 million net tons vs 30.3 million net tons for the same period last year, and 31.4 million tons for the Third quarter of 2008.

Capability -	2004 approx.	2.2 million tons/week
	2005	2.3
	2006	2.4
	2007	2.4
	2008	2.4

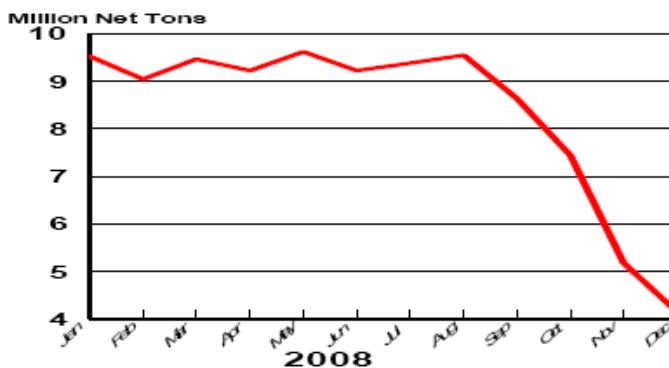
*Steel in the first solid state after melting suitable for further processing or sale, including ingots, steel for castings and strand or pressure cast blooms, slabs, or other product forms.

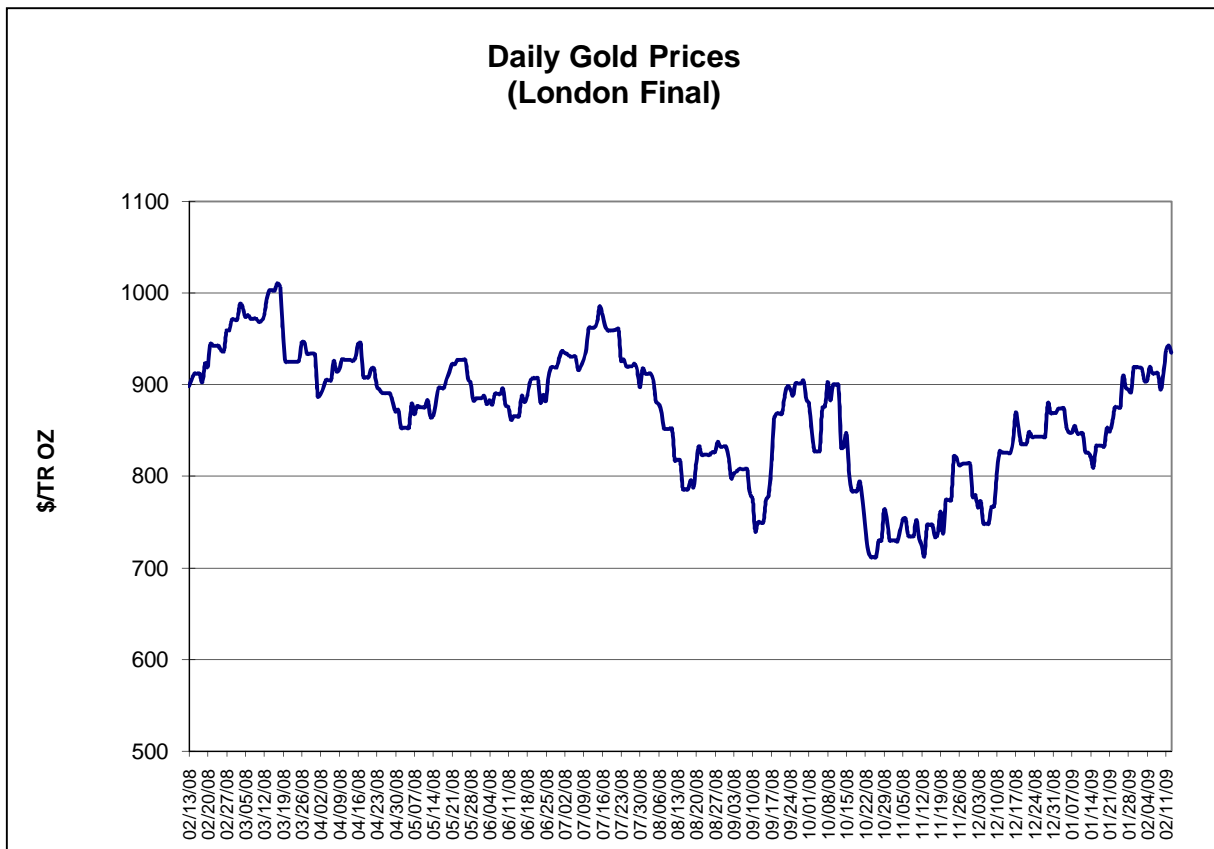
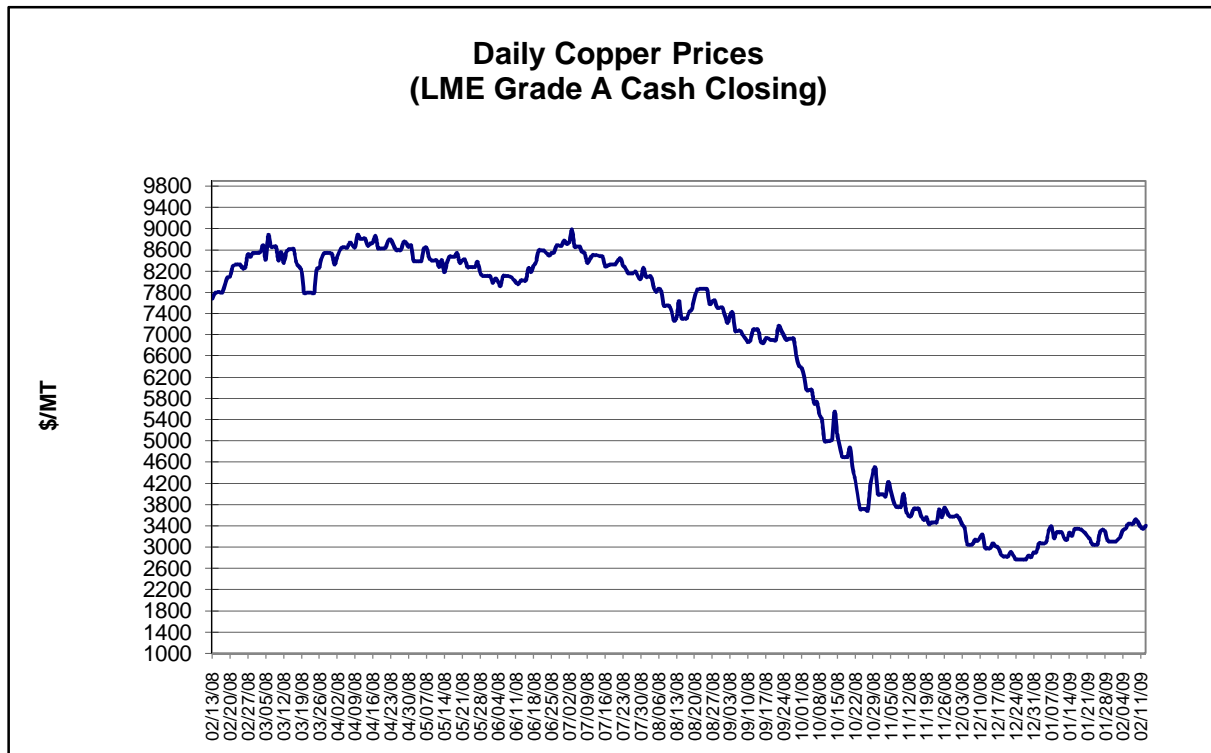
** Based on tonnage capability to produce raw steel for a sustained full order book.

Average Weekly Raw Steel Production



Monthly Raw Steel Production

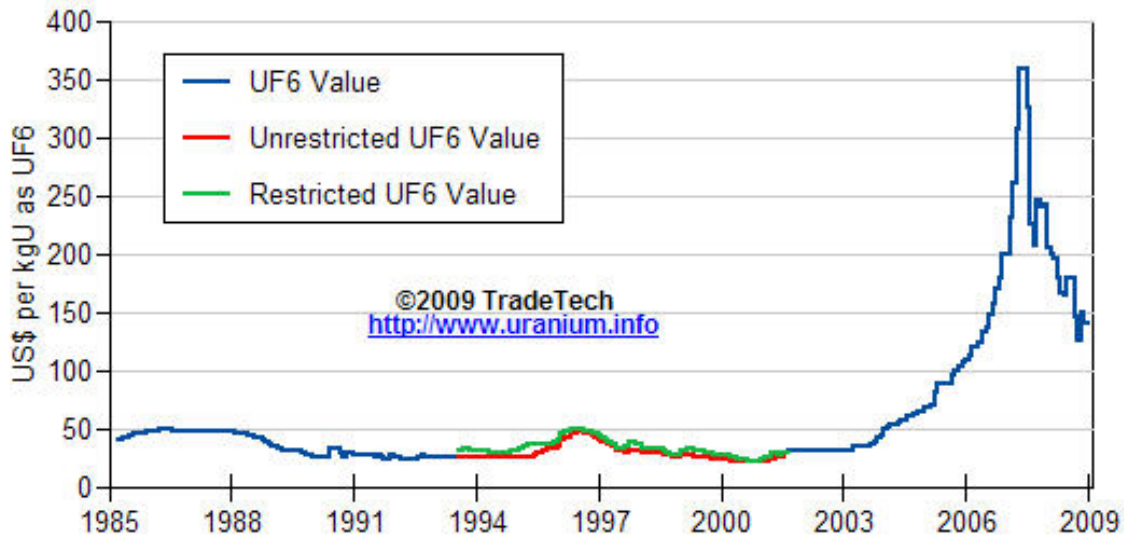




Data reflect closings on weekends and holidays.

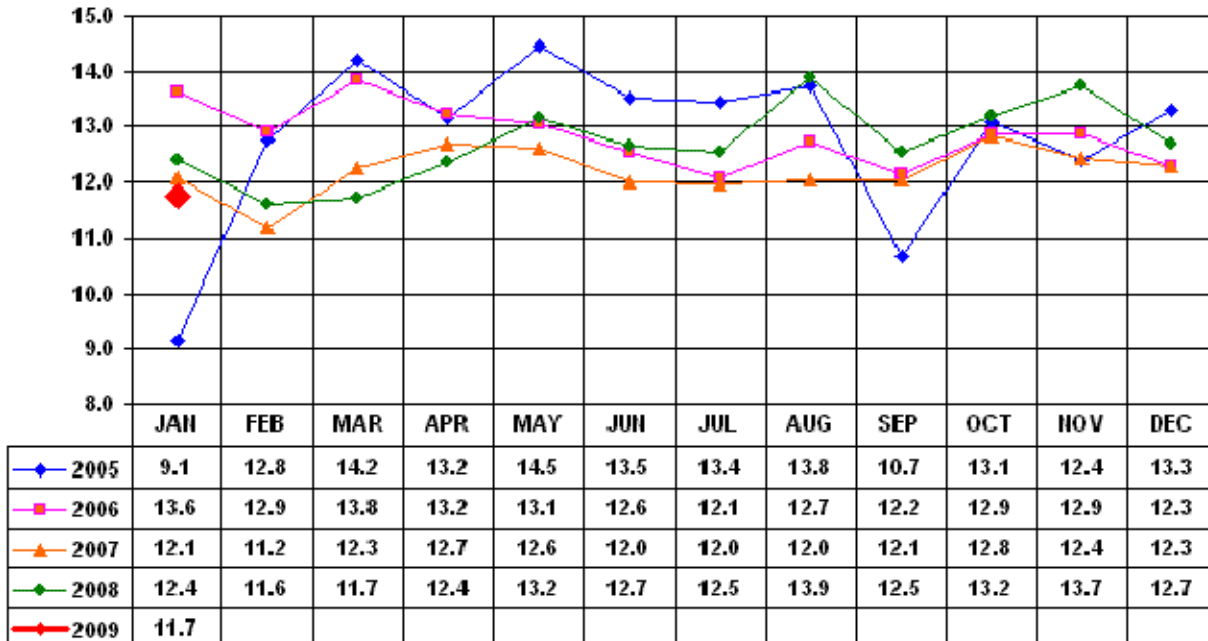
Source: Platts Metals Week

Trade Tech's Uranium (UF6) Monthly Spot Prices (US\$/kg as UF6)



Source: Trade Tech, Uranium Info Website – <http://www.uranium.info>

Coal and Coke Monthly Tonnage Indicator for Internal U.S. Waterways

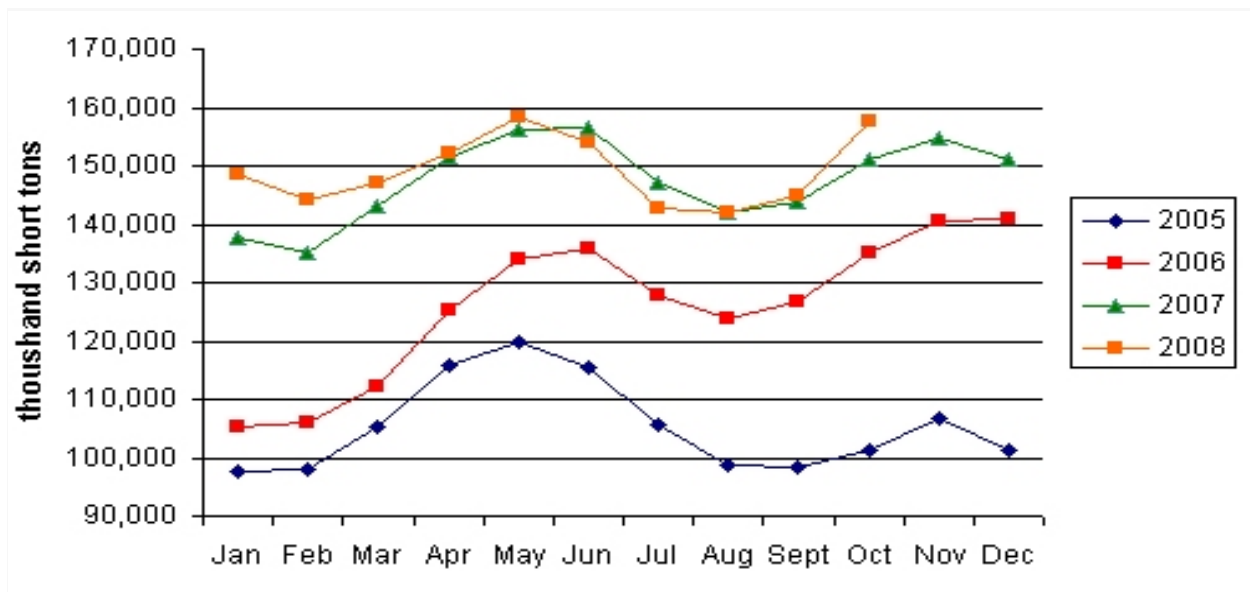


Source: U.S. Army Corps of Engineers, Waterborne Commerce Statistics Center

Average Weekly Coal Commodity Spot Prices (Dollars per Short Ton)					
Week Ended	Central Appalachia 12,500 Btu, 1.2 SO2	Northern Appalachia 13,000 Btu, <3.0 SO2	Illinois Basin 11,800 Btu, 5.0 SO2	Powder River Basin 8,800 Btu, 0.8 SO2	Uinta Basin 11,700 Btu, 0.8 SO2
1/2/09	\$80.85	\$88.75	\$78.00	\$13.00	\$73.00
1/9/09	\$76.80	\$76.00	\$78.00	\$13.00	\$73.00
1/16/09	\$66.45	\$76.00	\$60.00	\$13.00	\$73.00
1/23/09	\$66.45	\$69.00	\$60.00	\$13.00	\$73.00
1/30/09	\$66.45	\$69.00	\$55.00	\$13.00	\$73.00
2/06/09	\$66.45	\$66.00	\$55.00	\$13.00	\$73.00
2/13/09	\$68.20	\$66.00	\$55.00	\$13.00	\$73.00

Source: Energy Information Administration (from Platts *Coal Outlook*, "Weekly Price Survey")

EIA Electric Power Sector Coal Stocks



Source: Energy Information Administration, *Coal News and Markets Report*

USGS Production of Selected Mineral Commodities	2008 Year to Date - 4th Quarter	2007 Year to Date - 4th Quarter	Percent Change
Aluminum, secondary (000 Mt.)	981.0	924.0	6%
Cement (Mil. Mt.)	84.9	92.3	-8%
Gypsum (Mil. Mt.)	18.1	21.4	-15%
Iron Ore (Mil. Mt.)	53.0	52.0	2%
Phosphate rock (Mil. Mt.)	30.0	29.7	1%
Sand & gravel, construction (Mil. Mt.)	1,040.0	1,230.0	-15%
Soda ash (Mil. Mt.)	11.3	11.1	2%
Stone, crushed (Mil. Mt.)	1,340.0	1,600.0	-16%
Zinc (000 Mt.)	842.0	769.0	9%

Source: U.S. Geological Survey, Mineral Industry Surveys, *U.S. Production of Selected Mineral Commodities in the Fourth Quarter 2008, February 2008*