
National Mining Association

Weekly Statistical Summary

February 22, 2008 Edition
(Data for Week Ending February 16, 2008)

Prepared by
National Mining Association



Suite 500 East, 101 Constitution Avenue, NW
Washington, DC, 20001
Phone (202) 463-2600
Visit us at <http://www.nma.org>

NMA Weekly Statistical Summary

Vol. 46, No. 07
Dated 02/22/08

PRODUCTION, CONSUMPTION & TRADE						
	Week Ended			Cumulative Jan 1 to		
	02/16/08	02/17/07	% Chng	02/16/08	02/17/07	% Chng
EIA Coal Production (000 Tons):						
Week Ended/Year to Date	22,824	21,371	6.8%	151,546	150,443	0.7%
52 Weeks Ended	1,147,690	1,157,832	-0.9%			
Month Ended -- January						
	January 08/07		% Chng	Jan - Jan 08/07		% Chng
	100,712	99,361	1.4%	100,712	99,361	1.4%
MONTH ENDED AND CUMULATIVE NUMBERS ARE PRELIMINARY AND SUBJECT TO CHANGE						
DOC Bituminous Coal Trade (000 Tons)						
Exports:						
	December 07/06		% Chng	Jan - Dec 07/06		% Chng
Metallurgical	2,753	2,255	22.1%	32,280	27,607	16.9%
Steam	3,095	1,897	63.2%	26,368	21,707	21.5%
Imports:						
	2,889	2,630	9.8%	36,347	36,246	0.3%
Week Ended						
	02/16/08	02/17/07	% Chng	Cumulative Jan 1 to		
				02/16/08	02/17/07	% Chng
EEl Electric Output (Mil. Kwh)	79,368	82,886	-4.2%	560,394	562,486	-0.4%
AISI Raw Steel Output (000 Tons)	2,144	2,126	0.8%	14,658	13,637	7.5%
EIA U.S. PETROLEUM DATA						
4-Week Averages 000 Barrels per Day						
Week Ending						
	02/15/08	02/15/07	% Chng	Cumulative Daily Averages		
				2008	2007	% Chng
PETROLEUM SUPPLY:						
Domestic Crude	5,022	5,172	-2.9	--	--	--
Net Imports (Incl. SPR)	10,076	9,604	4.9	--	--	--
SPR Stocks W/D or Added	-8	0	--	--	--	--
Other Stocks W/D or added	-567	-84	--	--	--	--
Natural Gas Liquids Prod.	2,609	2,235	16.7	--	--	--
Cumulative daily petroleum averages will be shown beginning with week ending April 4, 2008 data.						



NMA
THE AMERICAN RESOURCE

National Mining Association Web Site: [http:// www.nma.org](http://www.nma.org)

EIA Estimated Weekly U.S. Coal Production Overview (Thousand Short Tons)

Coal-Producing Region and State	Week Ended			Year to Date		Percent Change	52 Weeks Ended		Percent Change
	2/16/2008	2/9/2008	2/17/2007	2/16/2008	2/16/2007		2/16/2008	2/17/2007	
Alabama	402	389	386	2,613	2,747	-4.9	19,049	18,823	1.2
Alaska	25	25	34	163	242	-32.4	1,239	1,487	-16.7
Arizona	125	121	152	831	1,085	-23.4	7,611	8,190	-7.1
Arkansas	2	2	1	14	9	52.8	86	30	186.1
Colorado	729	706	600	4,734	4,156	13.9	37,081	36,810	0.7
Illinois	701	679	716	4,534	5,047	-10.2	33,610	33,422	0.6
Indiana	736	713	677	4,805	4,783	0.5	35,862	35,209	1.9
Kansas	10	10	8	65	57	14.9	449	451	-0.5
Kentucky Total	2,362	2,289	2,210	15,394	15,656	-1.7	115,195	119,659	-3.7
Eastern	1,725	1,671	1,645	11,254	11,684	-3.7	86,136	92,281	-6.7
Western	638	618	564	4,140	3,972	4.2	29,059	27,378	6.1
Louisiana	89	91	76	591	464	27.3	3,259	4,103	-20.6
Maryland	42	41	45	275	318	-13.6	2,545	4,611	-44.8
Mississippi	50	50	74	391	425	-8.0	3,590	3,722	-3.6
Missouri	4	4	4	29	31	-6.7	231	344	-33.0
Montana	862	835	757	5,616	5,220	7.6	42,474	42,011	1.1
New Mexico	474	459	412	3,099	2,919	6.2	24,575	25,701	-4.4
North Dakota	596	578	579	3,908	4,129	-5.3	29,304	30,339	-3.4
Ohio	481	466	420	3,136	2,967	5.7	22,350	22,385	-0.2
Oklahoma	38	37	31	251	221	13.2	1,765	1,915	-7.8
Pennsylvania Total	1,339	1,297	1,307	8,704	9,278	-6.2	64,665	66,394	-2.6
Anthracite	36	35	30	232	215	8.1	1,577	1,536	2.7
Bituminous	1,303	1,262	1,276	8,472	9,063	-6.5	63,088	64,858	-2.7
Tennessee	49	48	53	321	380	-15.3	2,539	2,776	-8.6
Texas	839	813	744	5,464	5,123	6.7	42,288	44,979	-6.0
Utah	462	448	456	3,003	3,233	-7.1	23,366	25,566	-8.6
Virginia	521	505	543	3,386	3,834	-11.7	26,412	29,474	-10.4
Washington	--	--	--	--	--	--	0	2,166	-100.0
West Virginia Total	3,132	3,035	3,013	20,380	21,296	-4.3	153,304	152,471	0.5
Northern	990	959	899	6,388	6,355	0.5	44,455	42,623	4.3
Southern	2,142	2,076	2,115	13,992	14,940	-6.3	108,849	109,847	-0.9
Wyoming	8,751	8,859	8,074	59,837	56,821	5.3	454,844	444,794	2.3
Appalachian Total	7,691	7,451	7,412	50,070	52,503	-4.6	377,000	389,214	-3.1
Interior Total	3,108	3,018	2,896	20,285	20,133	0.8	150,197	151,553	-0.9
Western Total	12,025	12,031	11,063	81,191	77,806	4.4	620,494	617,064	0.6
East of Miss. River	9,816	9,512	9,443	63,941	66,731	-4.2	479,120	488,946	-2.0
West of Miss. River	13,008	12,988	11,929	87,605	83,712	4.7	668,570	668,886	*
Bituminous and Lignite	22,788	22,465	21,341	151,314	150,228	0.7	1,146,113	1,156,296	-0.9
Anthracite	36	35	30	232	215	8.1	1,577	1,536	2.7
U.S. Total	22,824	22,500	21,371	151,546	150,443	0.7	1,147,690	1,157,832	-0.9
Railroad Cars Loaded	146,088	143,386	133,076	1,001,035	970,944	3.1	7,434,123	7,437,124	*

Source: Energy Information Administration



WEEKLY ELECTRIC OUTPUT

Essential Energy Information from EII's Statistics Department

Volume 76 No. 7

OUTPUT FOR WEEK ENDED - Feb 16, 2008

Feb 20, 2008

The net available amount of electric energy distributed by the Total Electric Utility Industry* for the week ended Saturday, **Feb 16, 2008** was **79,368** gigawatthours (GWh), according to the Edison Electric Institute. This is equivalent to **186** on the weekly electric output index.

WEEKLY ELECTRIC OUTPUT BY GEOGRAPHIC DIVISION

(48 CONTIGUOUS STATES)

	Week Ended February 16		52 Weeks Ended February 16	
	GWh Output	% Increase Over Corresponding Week of 2007	GWh Output	% Increase Over Corresponding Period of 2007
New England	2,687	-5.1	133,922	1.0
Mid-Atlantic	9,213	-4.6	457,503	2.2
Central Industrial	15,287	-1.5	721,705	2.8
West Central	7,190	1.1	352,931	1.8
Southeast	20,657	-7.7	1,106,185	2.2
South Central	10,449	-14.1	595,065	-2.4
Rocky Mountain	4,983	5.2	279,167	6.0
Pacific Northwest	3,636	13.2	161,782	5.2
Pacific Southwest	5,266	-0.4	290,261	-0.8
Total United States	79,368	-4.2	4,098,521	1.7

WEEKLY ELECTRIC OUTPUT IN PREVIOUS WEEKS--GWh

Week Ended	2008	Week Ended	2007	% Inc. (08/07)	52 Weeks Ended	2008	% Inc. (08/07)
Jan 26	86,441	Jan 27	81,048	6.7	Jan 26	4,111,615	2.6
Feb 02	81,005	Feb 03	83,459	-2.9	Feb 02	4,109,161	2.3
Feb 09	76,941	Feb 10	84,063	-8.5	Feb 09	4,102,039	1.9
Feb 16	79,368	Feb 17	82,886	-4.2	Feb 16	4,098,521	1.7
Feb 16	560,394	Feb 17	562,486	-0.4	YEAR TO DATE, FIRST 7 WEEKS		

WEEKLY ELECTRIC OUTPUT INDEX--TOTAL U.S.*

SEASONALLY ADJUSTED 1982 = 100

Week Ended	2008	Week Ended	2007	Week Ended	2006
Jan 26	195	Jan 27	179	Jan 28	166
Feb 02	187	Feb 03	190	Feb 04	169
Feb 09	180	Feb 10	195	Feb 11	178
Feb 16	186	Feb 17	194	Feb 18	182

* Excludes Alaska and Hawaii.

+ Includes investor-owned companies, cooperatives and government-owned utilities.

Copyright © 2008 Edison Electric Institute. All rights reserved.

WEEKLY ELECTRIC OUTPUT BY GEOGRAPHIC DIVISION (48 CONTIGUOUS STATES)

	Week Ended			NMA CUMULATIVE JANUARY 1 to			52 Weeks Ended		
	16-Feb 2008 GWh Output	17-Feb 2007 GWh Output	% Increase Over Corresponding Week of 2007	16-Feb 2008 GWh Output	17-Feb 2007 GWh Output	% Increase Over Corresponding Week of 2007	16-Feb 2008 GWh Output	17-Feb 2007 GWh Output	% Increase Over Corresponding Week of 2007
New England	2,687	2,832	-5.1%	18,431	18,955	-2.8%	133,922	132,637	1.0%
Mid-Atlantic	9,213	9,655	-4.6%	61,645	62,810	-1.9%	457,503	447,558	2.2%
Central Industrial	15,287	15,526	-1.5%	102,883	103,317	-0.4%	721,705	702,108	2.8%
West Central	7,190	7,110	1.1%	48,860	48,146	1.5%	352,931	346,624	1.8%
Southeast	20,657	22,370	-7.7%	150,711	151,185	-0.3%	1,106,185	1,082,537	2.2%
South Central	10,449	12,158	-14.1%	76,738	79,808	-3.8%	595,065	609,838	-2.4%
Rocky Mountain	4,983	4,737	5.2%	36,046	34,311	5.1%	279,167	263,408	6.0%
Pacific Northwest	3,636	3,212	13.2%	28,105	25,401	10.6%	161,782	153,779	5.2%
Pacific Southwest	<u>5,266</u>	<u>5,286</u>	-0.4%	<u>36,975</u>	<u>38,552</u>	-4.1%	<u>290,261</u>	<u>292,730</u>	-0.8%
Total United States *	79,368	82,886	-4.2%	560,394	562,485	-0.4%	4,098,521	4,031,219	1.7%

Notes: EEI output data are an estimate of electricity load made available for distribution derived as weekly net generation + purchases from non-utilities + net imports - exports - sales for resale. It is not meant to be a measure of electricity generation for the U.S. EEI survey data represent the majority of national distribution (large utilities, large government power projects, some independent and large municipal power projects). The remaining segment of the industry (smaller producers) is estimated. Non-utility generation is captured via direct sales to utilities.

* Excludes Alaska and Hawaii

** Less than one-tenth of one percent

SOURCE: Edison Electric Institute (EEI), *Weekly Electric Output Report*.

AMERICAN IRON AND STEEL INSTITUTE
 1140 Connecticut Avenue, Suite 705
 Washington, D.C. 20036

February 18, 2008

ESTIMATED WEEKLY RAW STEEL* PRODUCTION

<u>Period</u>	<u>Thousand Net Tons</u>	<u>Percent Change from Previous Period</u>	<u>Percent Capability Utilization**</u>	<u>Production by District</u>		
				<u>Week Ending</u>		
				<u>Feb 16</u>	<u>Feb 9</u>	
<u>Week Ending</u>				North East Coast	191	196
				Pgh/Youngstown	221	217
				Lake Erie	74	73
				Detroit	97	100
				Indiana/Chicago	523	515
				Midwest	265	267
				Southern	681	659
				Western	<u>92</u>	<u>91</u>
				Total	2144	2118
<u>Year-to-Date+</u>						
Feb 16, 2008	2,144	1.2	89.9			
Feb 16, 2007	2,126	0.8	89.5			
Feb 9, 2008	2,118	-0.7	88.8			
Feb 16, 2008	14,658	7.4	87.8			
Feb 16, 2007	13,637	-	87.0			

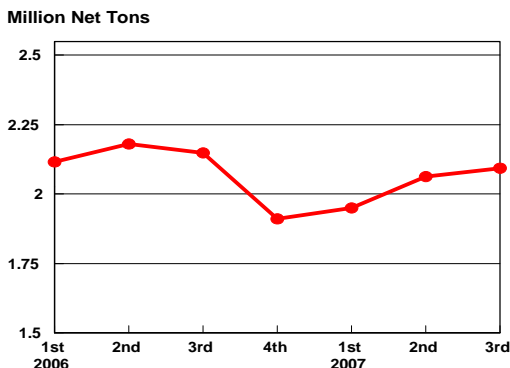
*Raw steel production tonnage included in this report is estimated based on a sampling of steel producers. Therefore, this report should be used primarily to assess production trends. The AISI production report "AIS 7," produced monthly and available by subscription, provides a more accurate summary of steel production based on data supplied by companies representing approximately 75% of U.S. production capacity.

+Includes revisions for previous months

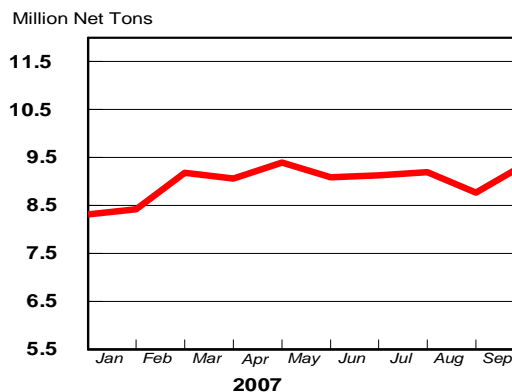
NOTE: Capability for the Fourth Quarter 2007 is approximately 31.3 million net tons vs 30.7 million net tons for the same period last year, and 30.1 million tons for the third quarter of 2007.

Capability -	2003 approx.	2.3 million tons/week
	2004	2.2
	2005	2.3
	2006	2.4
	2007	2.4

Average Weekly Raw Steel Production

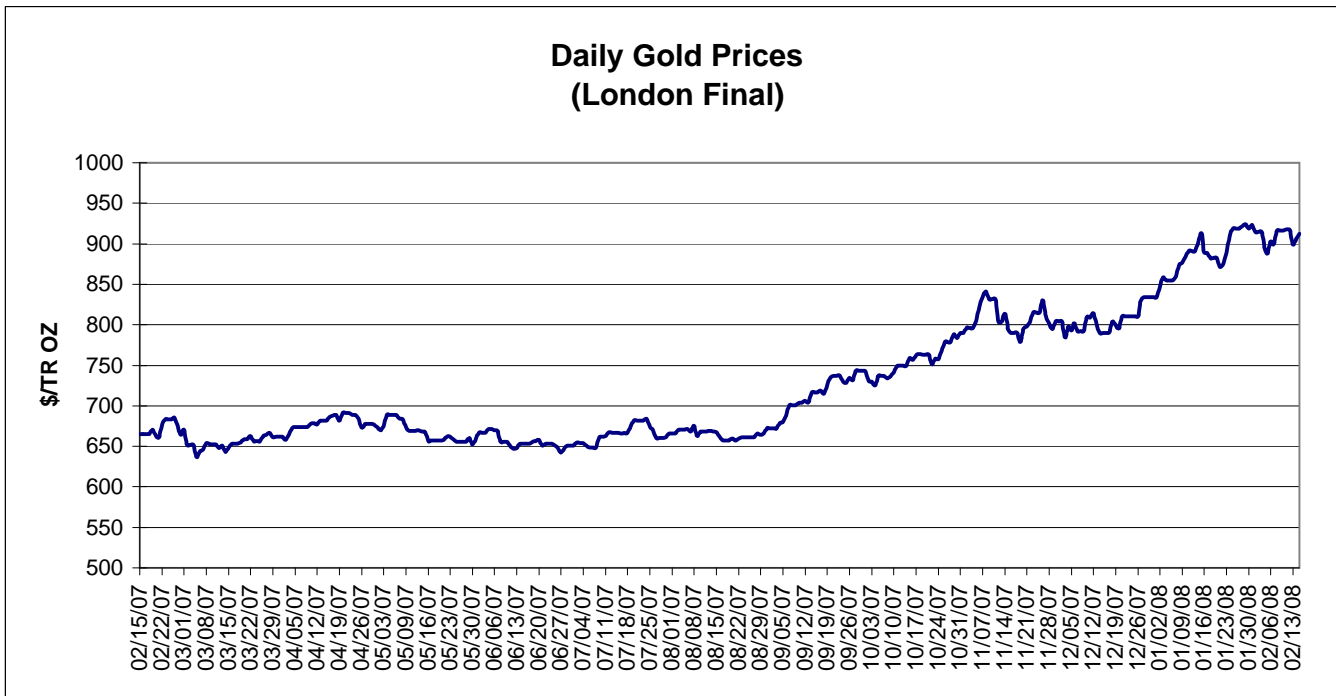
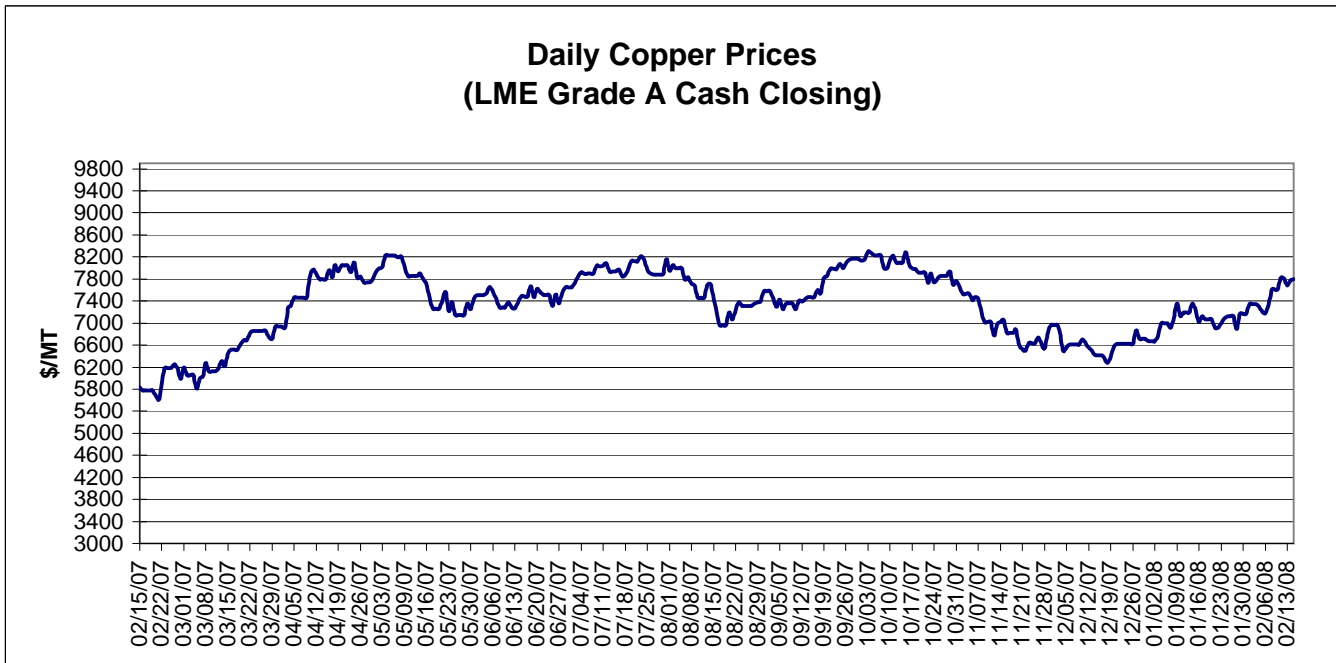


MONTHLY RAW STEEL PRODUCTION



*Steel in the first solid state after melting suitable for further processing or sale, including ingots, steel for castings and strand or pressure cast blooms, slabs, or other product forms.

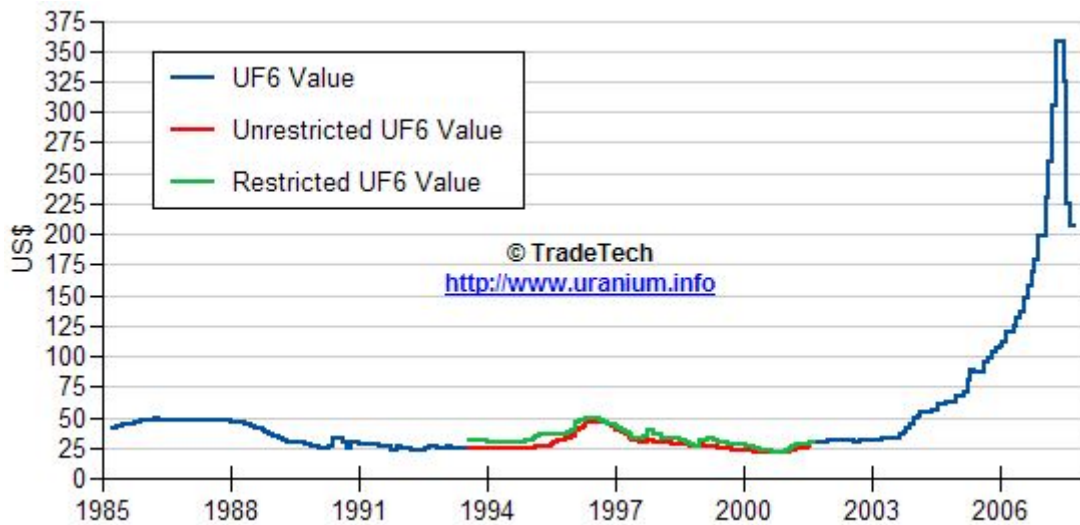
** Based on tonnage capability to produce raw steel for a sustained full order book.



Data reflect closings on weekends and holidays.

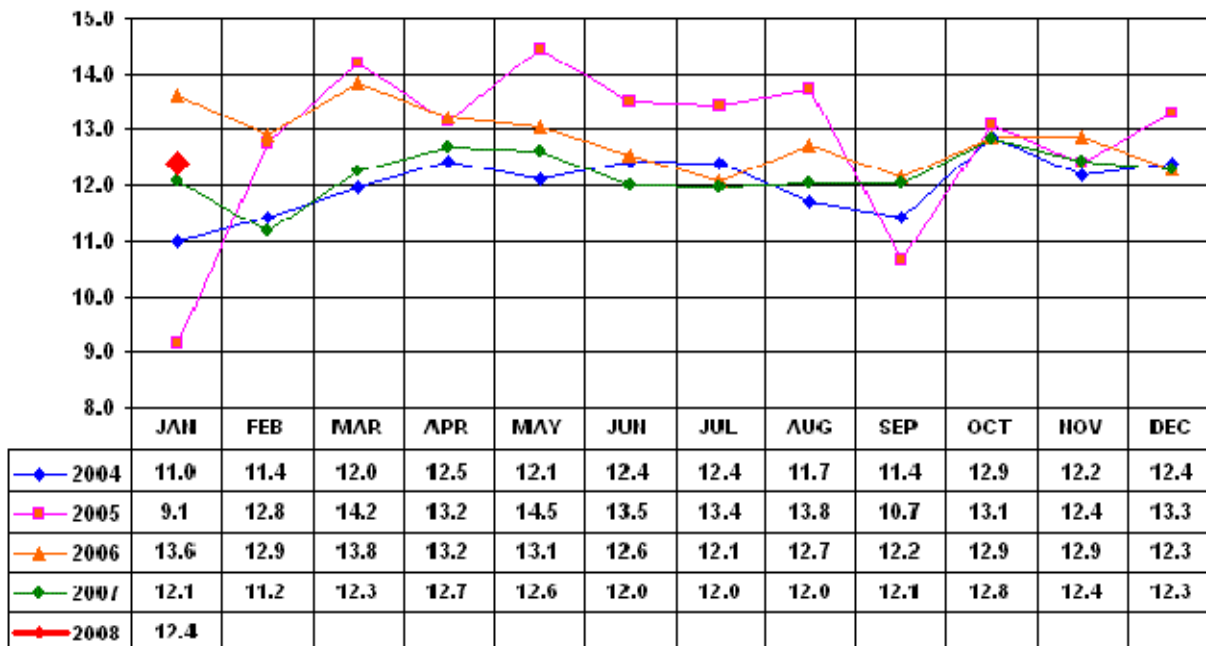
Source: Platts Metals Week

Trade Tech's Uranium (UF6) Monthly Spot Prices (US\$/kg as UF6)



Source: Trade Tech, Uranium Info Website – <http://www.uranium.info>

Coal and Coke Monthly Tonnage Indicator for Internal U.S. Waterways



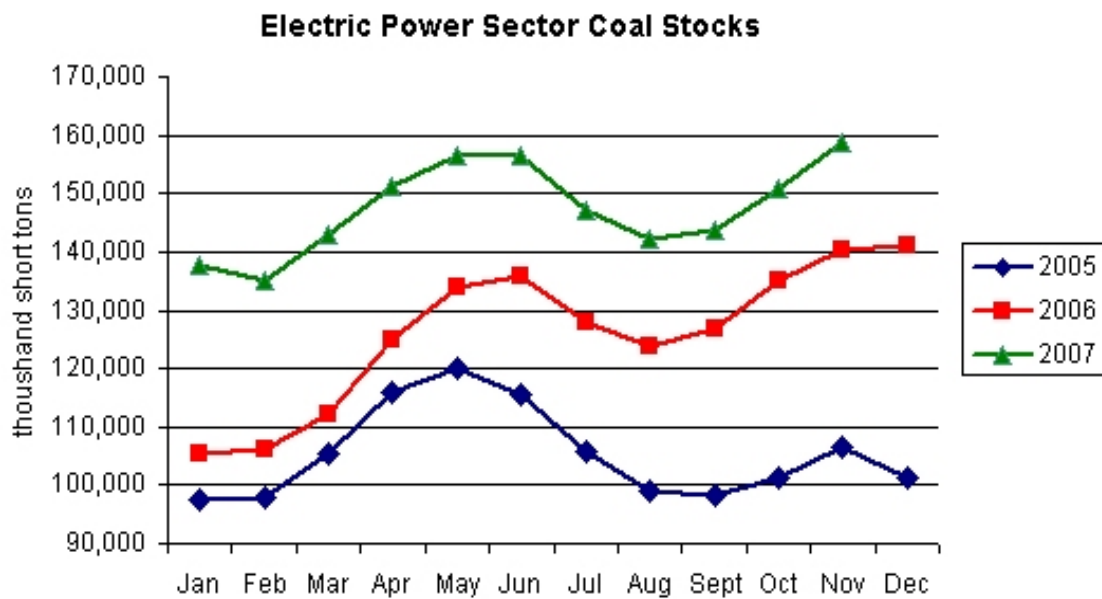
Source: U.S. Army Corps of engineers, Waterborne Commerce Statistics Center

EIA Weekly Spot Coal Prices

The following average spot coal prices appear in the graphic below, for the previous and most recent weeks:

Week Ended	Central Appalachia 12,500 Btu, 1.2 SO ₂	Northern Appalachia 13,000 Btu, <3.0 SO ₂	Illinois Basin 11,800 Btu, 5.0 SO ₂	Powder River Basin 8,800 Btu, 0.8 SO ₂	Uinta Basin 11,700 Btu, 0.8 SO ₂
11-Jan-08	\$58.30	\$61.75	\$34.00	\$11.65	\$24.00
18-Jan-08	\$58.30	\$61.75	\$34.00	\$11.85	\$33.00
25-Jan-08	\$59.90	\$63.00	\$34.00	\$12.30	\$33.00
01-Feb-08	\$59.90	\$63.00	\$36.00	\$12.55	\$33.00
08-Feb-08	\$59.90	\$70.00	\$36.00	\$13.10	\$33.00
15-Feb-08	\$66.95	\$70.00	\$46.80	\$13.10	\$33.00

Source: Energy Information Administration (from Platts *Coal Outlook*, "Weekly Price Survey")



Source: Energy Information Administration