
National Mining Association

Weekly Statistical Summary

February 29, 2008 Edition
(Data for Week Ending February 23, 2008)

Prepared by
National Mining Association



Suite 500 East, 101 Constitution Avenue, NW
Washington, DC, 20001
Phone (202) 463-2600
Visit us at <http://www.nma.org>

NMA Weekly Statistical Summary

Vol. 46, No. 08
Dated 02/29/08

PRODUCTION, CONSUMPTION & TRADE						
	Week Ended			Cumulative Jan 1 to		
	02/23/08	02/24/07	% Chng	02/23/08	02/24/07	% Chng
EIA Coal Production (000 Tons):						
Week Ended/Year to Date	23,229	22,429	3.6%	174,775	172,800	1.1%
52 Weeks Ended	1,148,491	1,158,636	-0.9%			
Month Ended -- January						
	January 08/07		% Chng	Jan - Jan 08/07		% Chng
	100,712	99,361	1.4%	100,712	99,361	1.4%
MONTH ENDED AND CUMULATIVE NUMBERS ARE PRELIMINARY AND SUBJECT TO CHANGE						
DOC Bituminous Coal Trade (000 Tons)						
Exports:	December 07/06			Jan - Dec 07/06		
			% Chng			% Chng
Metallurgical	2,753	2,255	22.1%	32,280	27,607	16.9%
Steam	3,095	1,897	63.2%	26,368	21,707	21.5%
Imports:	2,889	2,630	9.8%	36,347	36,246	0.3%
EI Electric Output (Mil. Kwh)						
	Week Ended			Cumulative Jan 1 to		
	02/23/08	02/24/07	% Chng	02/23/08	02/24/07	% Chng
	78,367	76,705	2.2%	638,761	639,191	-0.1%
AISI Raw Steel Output (000 Tons)						
	2,158	2,126	1.5%	16,816	15,763	6.7%
EIA U.S. PETROLEUM DATA						
4-Week Averages 000 Barrels per Day						
PETROLEUM SUPPLY:						
	Week Ending			Cumulative Daily Averages		
	02/22/08	02/22/07	% Chng	2008	2007	% Chng
Domestic Crude	5,034	5,159	-2.4	--	--	--
Net Imports (Incl. SPR)	10,052	9,314	7.9	--	--	--
SPR Stocks W/D or Added	-16	0	--	--	--	--
Other Stocks W/D or added	-556	59	--	--	--	--
Natural Gas Liquids Prod.	2,657	2,227	19.3	--	--	--

Cumulative daily petroleum averages will be shown beginning with week ending April 4, 2008 data.



NMA
THE AMERICAN RESOURCE

National Mining Association Web Site: [http:// www.nma.org](http://www.nma.org)

EIA Estimated Weekly U.S. Coal Production Overview (Thousand Short Tons)

Coal-Producing Region and State	Week Ended			Year to Date		Percent Change	52 Weeks Ended		Percent Change
	2/23/2008	2/16/2008	2/24/2007	2/23/2008	2/23/2007		2/23/2008	2/24/2007	
Alabama	388	402	407	3,001	3,154	-4.8	19,030	18,823	1.1
Alaska	25	25	36	188	278	-32.3	1,227	1,499	-18.1
Arizona	121	125	161	952	1,246	-23.6	7,571	8,202	-7.7
Arkansas	2	2	1	16	10	52.7	86	31	178.5
Colorado	704	729	634	5,439	4,786	13.6	37,151	36,930	0.6
Illinois	677	701	756	5,211	5,801	-10.2	33,531	33,571	-0.1
Indiana	712	736	714	5,517	5,496	0.4	35,859	35,274	1.7
Kansas	10	10	8	75	65	15.0	450	455	-1.0
Kentucky Total	2,282	2,362	2,333	17,677	17,987	-1.7	115,144	119,623	-3.7
Eastern	1,666	1,725	1,737	12,920	13,420	-3.7	86,065	92,188	-6.6
Western	616	638	596	4,756	4,566	4.2	29,079	27,435	6.0
Louisiana	85	89	80	676	544	24.3	3,264	4,132	-21.0
Maryland	41	42	47	316	365	-13.6	2,539	4,552	-44.2
Mississippi	50	50	65	442	491	-10.1	3,575	3,721	-3.9
Missouri	4	4	5	34	36	-6.7	230	337	-31.7
Montana	833	862	799	6,449	6,014	7.2	42,508	42,111	0.9
New Mexico	458	474	435	3,557	3,353	6.1	24,599	25,702	-4.3
North Dakota	576	596	611	4,484	4,740	-5.4	29,269	30,370	-3.6
Ohio	465	481	444	3,601	3,410	5.6	22,371	22,368	*
Oklahoma	37	38	33	288	254	13.2	1,769	1,906	-7.2
Pennsylvania Total	1,293	1,339	1,380	9,997	10,656	-6.2	64,579	66,521	-2.9
Anthracite	35	36	32	267	247	8.2	1,580	1,538	2.7
Bituminous	1,259	1,303	1,348	9,730	10,410	-6.5	62,999	64,983	-3.1
Tennessee	48	49	56	369	436	-15.3	2,530	2,776	-8.9
Texas	811	839	786	6,275	5,903	6.3	42,313	44,958	-5.9
Utah	446	462	482	3,449	3,715	-7.1	23,331	25,538	-8.6
Virginia	503	521	573	3,890	4,406	-11.7	26,343	29,463	-10.6
Washington	--	--	--	--	--	--	0	2,109	-100.0
West Virginia Total	3,027	3,132	3,182	23,407	24,472	-4.4	153,149	152,711	0.3
Northern	956	990	949	7,345	7,303	0.6	44,463	42,721	4.1
Southern	2,070	2,142	2,233	16,062	17,169	-6.4	108,686	109,989	-1.2
Wyoming	9,631	8,751	8,402	69,468	65,181	6.6	456,074	444,954	2.5
Appalachian Total	7,431	7,691	7,826	57,501	60,320	-4.7	376,604	389,402	-3.3
Interior Total	3,004	3,108	3,044	23,289	23,168	0.5	150,157	151,820	-1.1
Western Total	12,794	12,025	11,558	93,985	89,313	5.2	621,730	617,414	0.7
East of Miss. River	9,486	9,816	9,957	73,427	76,675	-4.2	478,649	489,403	-2.2
West of Miss. River	13,743	13,008	12,471	101,348	96,126	5.4	669,842	669,234	0.1
Bituminous and Lignite	23,194	22,788	22,397	174,509	172,554	1.1	1,146,911	1,157,099	-0.9
Anthracite	35	36	32	267	247	8.2	1,580	1,538	2.7
U.S. Total	23,229	22,824	22,429	174,775	172,800	1.1	1,148,491	1,158,636	-0.9
Railroad Cars Loaded	149,959	146,088	143,133	1,150,994	1,114,077	3.3	7,440,949	7,442,419	*

Source: Energy Information Administration



Volume 76 No. 8

OUTPUT FOR WEEK ENDED - Feb 23, 2008

Feb 27, 2008

The net available amount of electric energy distributed by the Total Electric Utility Industry+ for the week ended Saturday, **Feb 23, 2008** was **78,367** gigawatthours (GWh), according to the Edison Electric Institute. This is equivalent to **188** on the weekly electric output index.

WEEKLY ELECTRIC OUTPUT BY GEOGRAPHIC DIVISION
(48 CONTIGUOUS STATES)

	Week Ended February 23		52 Weeks Ended February 23	
	GWh Output	% Increase Over Corresponding Week of 2007	GWh Output	% Increase Over Corresponding Period of 2007
New England	2,605	-2.4	133,858	0.9
Mid-Atlantic	8,942	-1.0	457,411	2.1
Central Industrial	14,897	2.4	722,059	2.8
West Central	7,103	7.0	353,393	2.0
Southeast	20,650	-1.3	1,105,923	2.1
South Central	10,367	7.2	595,758	-2.2
Rocky Mountain	5,005	6.1	279,454	6.1
Pacific Northwest	3,576	11.9	162,163	5.7
Pacific Southwest	5,222	-1.8	290,164	-0.9
Total United States	78,367	2.2	4,100,183	1.7

WEEKLY ELECTRIC OUTPUT IN PREVIOUS WEEKS--GWh

Week Ended	2008	Week Ended	2007	% Inc. (08/07)	52 Weeks Ended	2008	% Inc. (08/07)
Feb 02	81,005	Feb 03	83,459	-2.9	Feb 02	4,109,161	2.3
Feb 09	76,941	Feb 10	84,063	-8.5	Feb 09	4,102,039	1.9
Feb 16	79,368	Feb 17	82,886	-4.2	Feb 16	4,098,521	1.7
Feb 23	78,367	Feb 24	76,705	2.2	Feb 23	4,100,183	1.7
Feb 23	638,761	Feb 24	639,191	-0.1	YEAR TO DATE, FIRST 8 WEEKS		

WEEKLY ELECTRIC OUTPUT INDEX--TOTAL U.S.*
SEASONALLY ADJUSTED 1982 = 100

Week Ended	2008	Week Ended	2007	Week Ended	2006
Feb 02	187	Feb 03	190	Feb 04	169
Feb 09	180	Feb 10	195	Feb 11	178
Feb 16	186	Feb 17	194	Feb 18	182
Feb 23	188	Feb 24	185	Feb 25	184

* Excludes Alaska and Hawaii.

+ Includes investor-owned companies, cooperatives and government-owned utilities.

Copyright © 2008 Edison Electric Institute. All rights reserved.

WEEKLY ELECTRIC OUTPUT BY GEOGRAPHIC DIVISION (48 CONTIGUOUS STATES)

	Week Ended			NMA CUMULATIVE JANUARY 1 to			52 Weeks Ended		
	23-Feb 2008 GWh Output	24-Feb 2007 GWh Output	% Increase Over Corresponding Week of 2007	23-Feb 2008 GWh Output	24-Feb 2007 GWh Output	% Increase Over Corresponding Week of 2007	23-Feb 2008 GWh Output	24-Feb 2007 GWh Output	% Increase Over Corresponding Week of 2007
New England	2,605	2,669	-2.4%	21,036	21,624	-2.7%	133,858	132,666	0.9%
Mid-Atlantic	8,942	9,034	-1.0%	70,587	71,844	-1.7%	457,411	447,793	2.1%
Central Industrial	14,897	14,543	2.4%	117,780	117,860	-0.1%	722,059	702,645	2.8%
West Central	7,103	6,641	7.0%	55,963	54,787	2.1%	353,393	346,540	2.0%
Southeast	20,650	20,912	-1.3%	171,361	172,097	-0.4%	1,105,923	1,083,182	2.1%
South Central	10,367	9,674	7.2%	87,105	89,482	-2.7%	595,758	608,859	-2.2%
Rocky Mountain	5,005	4,718	6.1%	41,051	39,029	5.2%	279,454	263,429	6.1%
Pacific Northwest	3,576	3,195	11.9%	31,681	28,596	10.8%	162,163	153,413	5.7%
Pacific Southwest	<u>5,222</u>	<u>5,319</u>	-1.8%	<u>42,197</u>	<u>43,871</u>	-3.8%	<u>290,164</u>	<u>292,765</u>	-0.9%
Total United States *	78,367	76,705	2.2%	638,761	639,190	-0.1%	4,100,183	4,031,292	1.7%

Notes: EEI output data are an estimate of electricity load made available for distribution derived as weekly net generation + purchases from non-utilities + net imports - exports - sales for resale. It is not meant to be a measure of electricity generation for the U.S. EEI survey data represent the majority of national distribution (large utilities, large government power projects, some independent and large municipal power projects). The remaining segment of the industry (smaller producers) is estimated. Non-utility generation is captured via direct sales to utilities.

* Excludes Alaska and Hawaii

** Less than one-tenth of one percent

SOURCE: Edison Electric Institute (EEI), *Weekly Electric Output Report*.

AMERICAN IRON AND STEEL INSTITUTE
 1140 Connecticut Avenue, Suite 705
 Washington, D.C. 20036

February 25, 2008

ESTIMATED WEEKLY RAW STEEL* PRODUCTION

<u>Period</u>	<u>Thousand Net Tons</u>	<u>Percent Change from Previous Period</u>	<u>Percent Capability Utilization**</u>	<u>Production by District</u>		
				<u>Week Ending Feb 25</u>	<u>Feb 16</u>	
<u>Week Ending</u>				North East Coast	188	191
				Pgh/Youngstown	217	221
				Lake Erie	70	74
				Detroit	104	97
				Indiana/Chicago	529	523
				Midwest	268	265
				Southern	689	681
				Western	<u>93</u>	<u>92</u>
				Total	2158	2144
<u>Year-to-Date+</u>						
Feb 23, 2008	2,158	0.6	90.5			
Feb 23, 2007	2,126	1.5	89.5			
Feb 16, 2008	2,144	1.2	89.9			
Feb 23, 2008	16,816	6.6	87.9			
Feb 23, 2007	15,763	-	87.0			

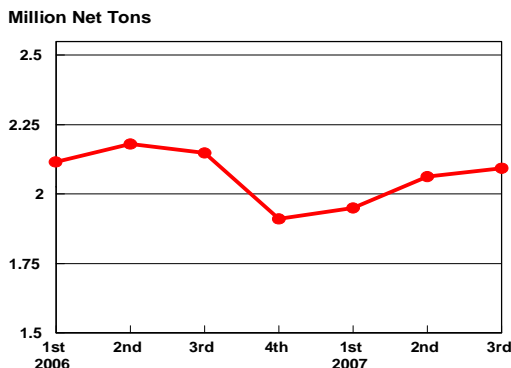
*Raw steel production tonnage included in this report is estimated based on a sampling of steel producers. Therefore, this report should be used primarily to assess production trends. The AISI production report "AIS 7," produced monthly and available by subscription, provides a more accurate summary of steel production based on data supplied by companies representing approximately 75% of U.S. production capacity.

+Includes revisions for previous months

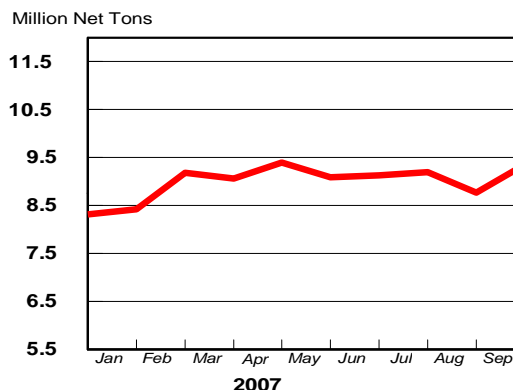
NOTE: Capability for the Fourth Quarter 2007 is approximately 31.3 million net tons vs 30.7 million net tons for the same period last year, and 30.1 million tons for the third quarter of 2007.

Capability -	2003 approx.	2.3 million tons/week
	2004	2.2
	2005	2.3
	2006	2.4
	2007	2.4

Average Weekly Raw Steel Production

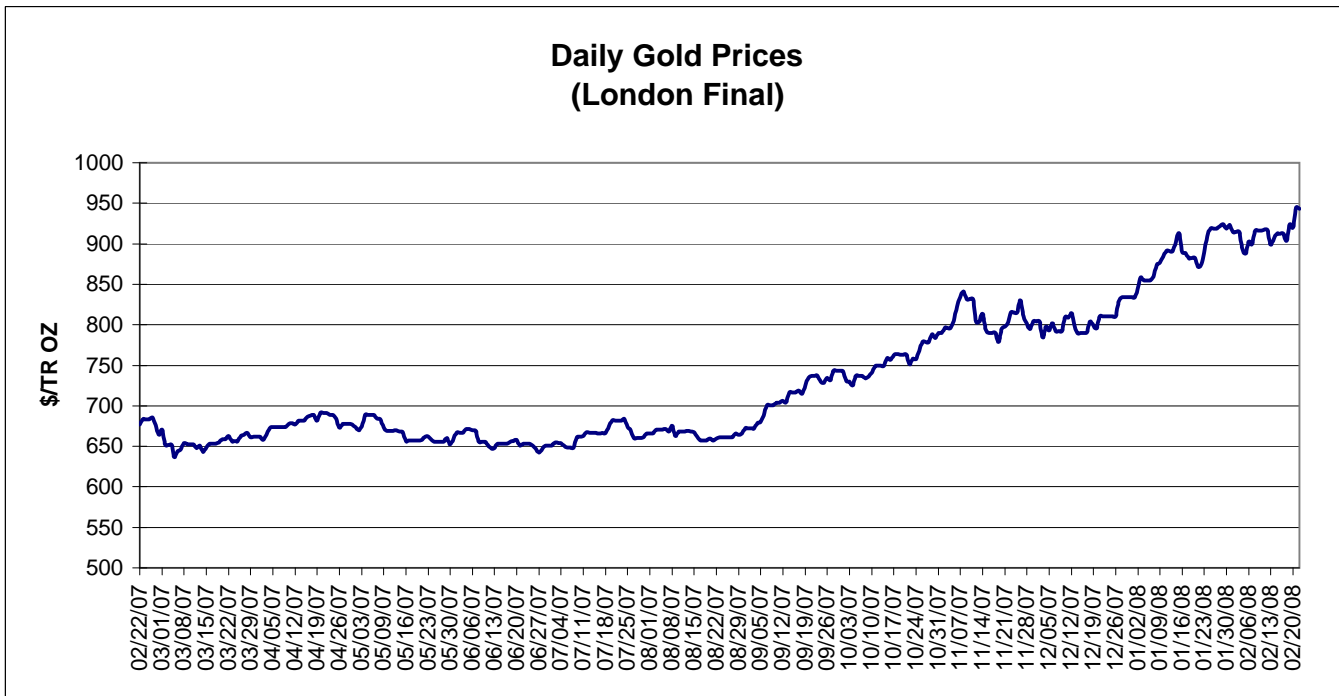
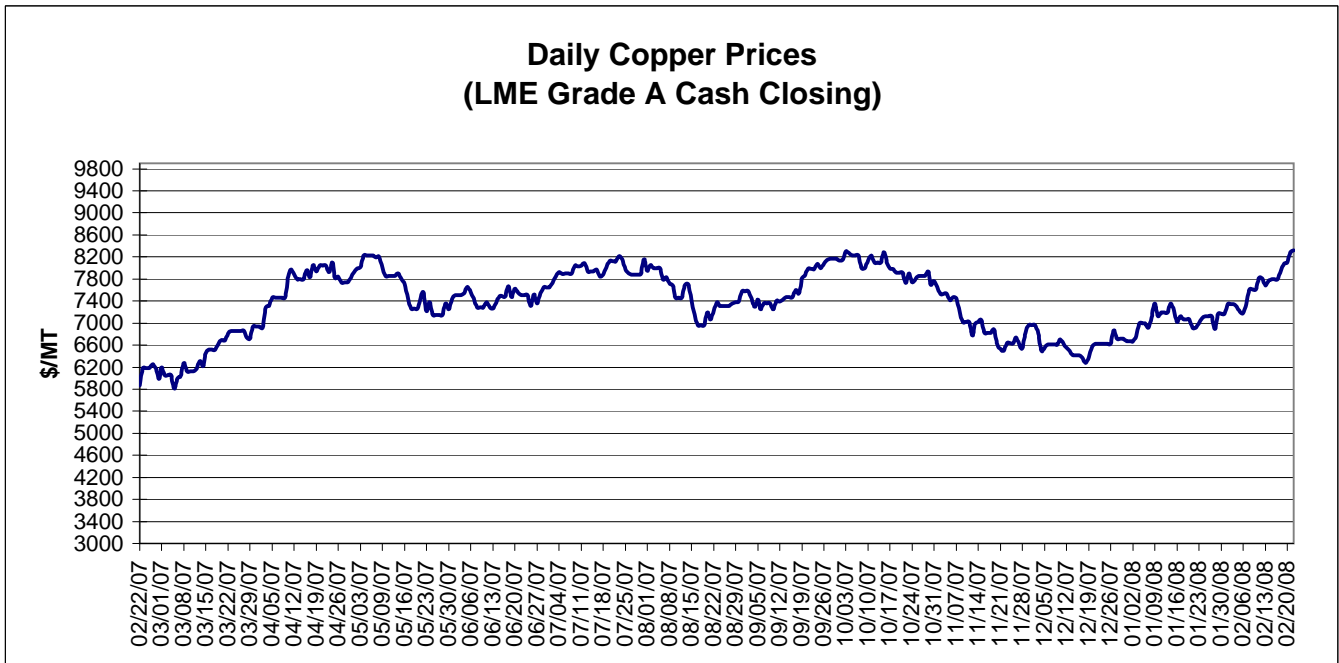


MONTHLY RAW STEEL PRODUCTION



*Steel in the first solid state after melting suitable for further processing or sale, including ingots, steel for castings and strand or pressure cast blooms, slabs, or other product forms.

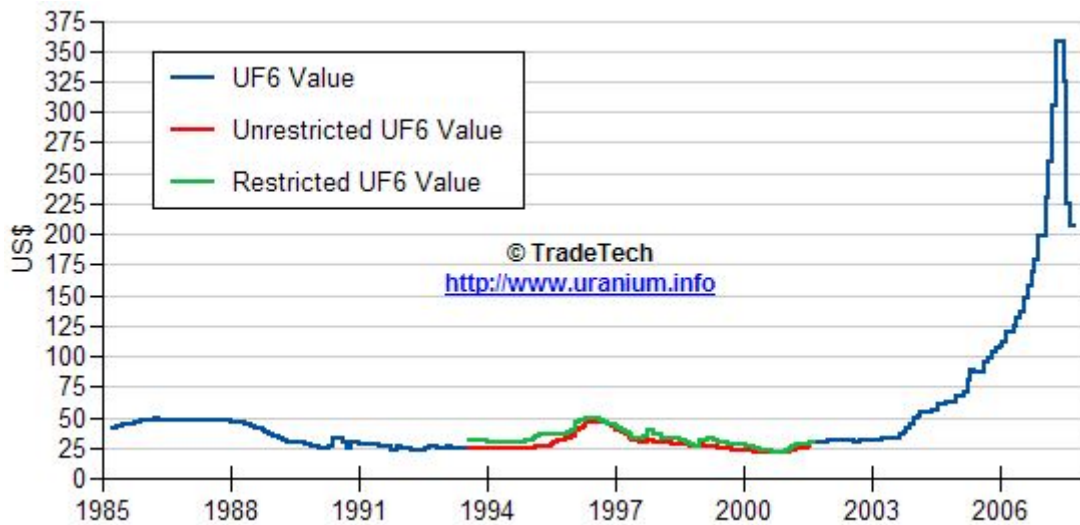
** Based on tonnage capability to produce raw steel for a sustained full order book.



Data reflect closings on weekends and holidays.

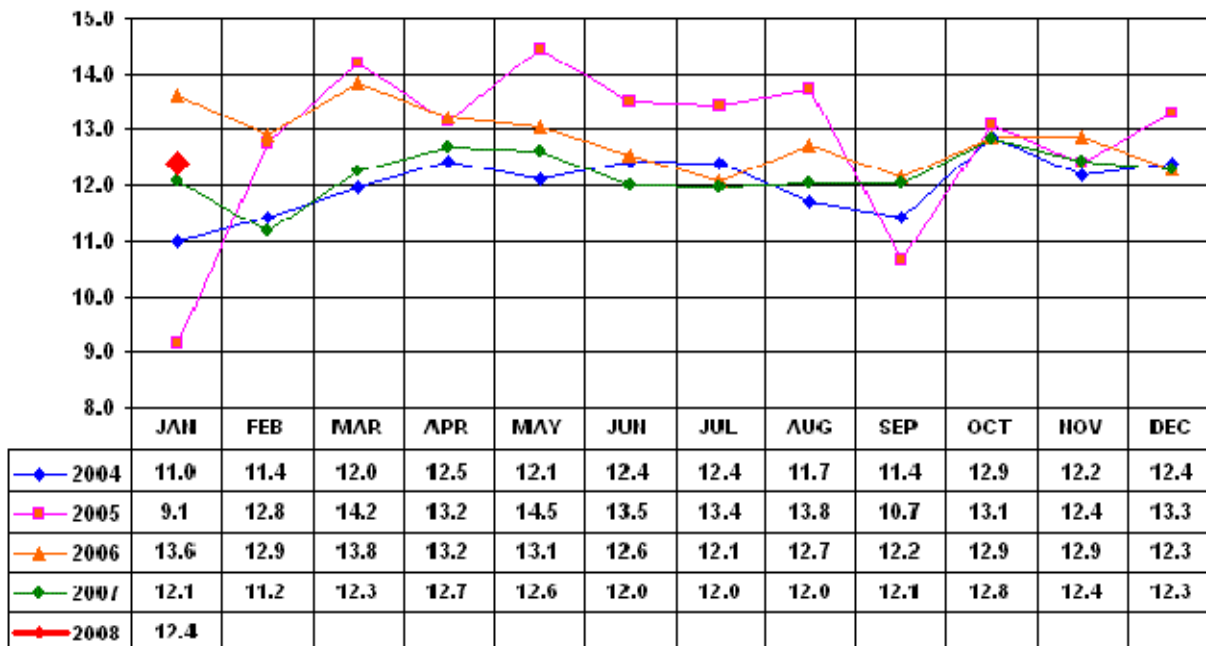
Source: Platts Metals Week

Trade Tech's Uranium (UF6) Monthly Spot Prices (US\$/kg as UF6)



Source: Trade Tech, Uranium Info Website – <http://www.uranium.info>

Coal and Coke Monthly Tonnage Indicator for Internal U.S. Waterways



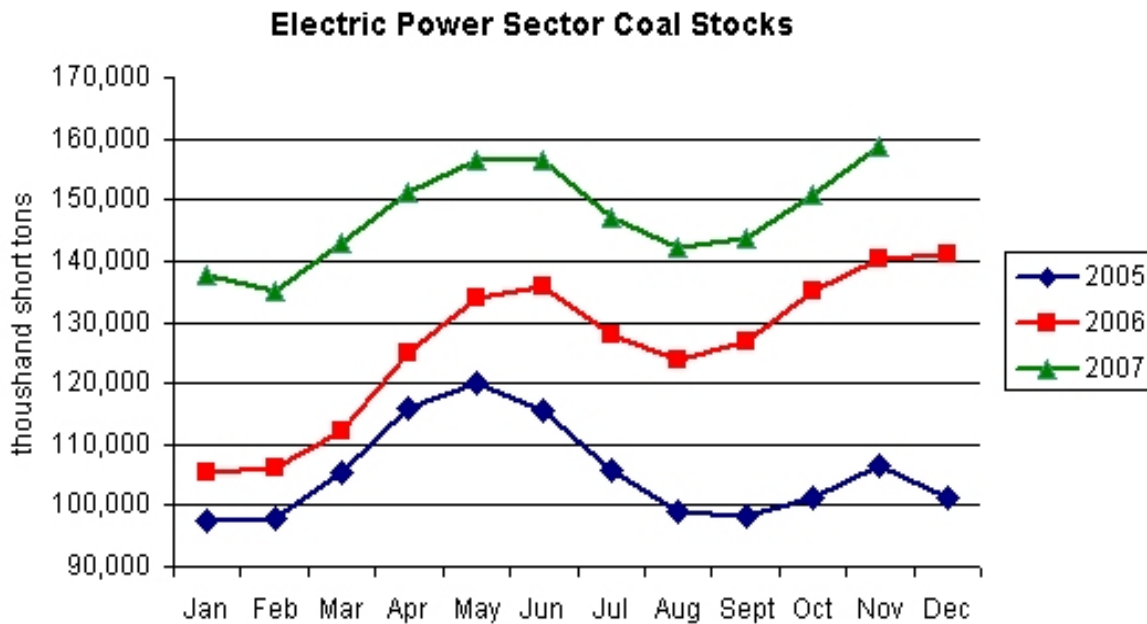
Source: U.S. Army Corps of engineers, Waterborne Commerce Statistics Center

EIA Weekly Spot Coal Prices

The following average spot coal prices appear in the graphic below, for the previous and most recent weeks:

Week Ended	Central Appalachia 12,500 Btu, 1.2 SO2	Northern Appalachia 13,000 Btu, <3.0 SO2	Illinois Basin 11,800 Btu, 5.0 SO2	Powder River Basin 8,800 Btu, 0.8 SO2	Uinta Basin 11,700 Btu, 0.8 SO2
18-Jan-08	\$58.30	\$61.75	\$34.00	\$11.85	\$33.00
25-Jan-08	\$59.90	\$63.00	\$34.00	\$12.30	\$33.00
01-Feb-08	\$59.90	\$63.00	\$36.00	\$12.55	\$33.00
08-Feb-08	\$59.90	\$70.00	\$36.00	\$13.10	\$33.00
15-Feb-08	\$66.95	\$70.00	\$46.80	\$13.10	\$33.00
22-Feb-08	\$84.30	\$70.00	\$46.80	\$13.10	\$33.00

Source: Energy Information Administration (from Platts *Coal Outlook*, "Weekly Price Survey")



Source: Energy Information Administration