

---

National Mining Association

# Weekly Statistical Summary

February 6, 2009 Edition  
(Data for Week Ending January 31, 2009)

Prepared by  
National Mining Association



Suite 500 East, 101 Constitution Avenue, NW  
Washington, DC, 20001  
Phone (202) 463-2600  
Visit us at <http://www.nma.org>

# NMA Weekly Statistical Summary

Vol. 47, No. 5  
Dated 02/06/09

PRODUCTION, CONSUMPTION & TRADE						
	Week Ended			* Cumulative Jan 1 to		
	01/31/09	02/02/08	% Chng	01/31/09	01/31/08	% Chng
<b>EIA Coal Production (000 Tons):</b>						
Week Ended/Year to Date	21,430	21,970	-2.5%	96,968	98,619	-1.7%
52 Weeks Ended	1,153,144	1,141,553	1.0%			
<b>MONTH ENDED AND CUMULATIVE NUMBERS ARE PRELIMINARY AND SUBJECT TO CHANGE</b>						
<b>DOC Bituminous Coal Trade (000 Tons)</b>						
<b>Exports:</b>	<b>Nov 08/07</b>		<b>% Chng</b>	<b>Jan - Nov 08/07</b>		<b>% Chng</b>
Metallurgical	3,636	3,096	17.4%	40,363	29,528	36.7%
Steam	3,785	3,119	21.4%	34,152	23,273	46.7%
<b>Imports:</b>	2,988	2,889	3.4%	31,015	33,535	-7.5%
<b>EI Electric Output (Mil. Kwh)</b>						
	81,253	81,005	0.3%	396,593	404,085	-1.9%
<b>AISI Raw Steel Output (000 Tons)</b>						
	1,006	2,154	-53.3%	4,510	9,537	-52.7%
<b>EIA U.S. PETROLEUM DATA</b>						
4-Week Averages 000 Barrels per Day						
<b>PETROLEUM SUPPLY:</b>						
	<b>Week Ending</b>			<b>Cumulative Daily Averages</b>		
	<b>01/30/09</b>	<b>01/30/08</b>	<b>% Chng</b>	<b>2008</b>	<b>2007</b>	<b>% Chng</b>
Domestic Crude	5,062	5,093	-0.6			
Net Imports (Incl. SPR)	9,807	9,988	-1.8			
SPR Stocks W/D or Added	-61	-45	--			
Other Stocks W/D or added	737	-133	-3.4			
Natural Gas Liquids Prod.	2,009	2,123	-5.4			

Cumulative daily petroleum averages will be shown beginning with week ending April 3, 2009 data.



**NMA**

THE AMERICAN RESOURCE National Mining Association Web Site: [http:// www.nma.org](http://www.nma.org)

## EIA Estimated Weekly U.S. Coal Production Overview (Thousand Short Tons)

Coal-Producing Region and State	Week Ended			Year to Date			52 Weeks Ended		
	1/31/2009	1/24/2009	2/2/2008	1/31/2009	1/31/2008	Percent Change	1/31/2009	2/2/2008	Percent Change
Alabama	410	399	434	1,787	1,937	-7.7	20,544	19,575	4.9
Alaska	25	24	29	106	129	-18.1	1,341	1,286	4.3
Arizona	166	162	145	716	666	7.5	8,052	7,903	1.9
Arkansas	1	1	1	5	5	-5.4	58	81	-28.4
Colorado	670	651	632	2,940	2,775	5.9	33,726	36,332	-7.2
Illinois	588	572	598	2,542	2,630	-3.3	31,745	31,934	-0.6
Indiana	700	681	670	3,059	2,990	2.3	35,992	34,833	3.3
Kansas	5	5	6	23	27	-15.8	281	408	-31.0
<b>Kentucky Total</b>	<b>2,140</b>	<b>2,082</b>	<b>2,300</b>	<b>9,264</b>	<b>10,262</b>	<b>-9.7</b>	<b>117,495</b>	<b>114,934</b>	<b>2.2</b>
Eastern	1,603	1,560	1,736	6,927	7,766	-10.8	88,348	86,893	1.7
Western	537	522	564	2,337	2,496	-6.4	29,148	28,040	3.9
Louisiana	74	96	65	395	356	10.9	3,975	3,192	24.5
Maryland	48	47	40	207	178	16.4	2,586	2,260	14.4
Mississippi	97	60	59	281	284	-1.1	2,732	3,556	-23.2
Missouri	6	6	4	25	18	37.8	258	233	11.1
Montana	848	825	867	3,739	3,812	-1.9	43,969	43,671	0.7
New Mexico	569	554	354	2,491	1,587	56.9	28,408	24,026	18.2
North Dakota	551	536	539	2,413	2,434	-0.8	29,507	29,201	1.0
Ohio	467	454	467	2,043	2,080	-1.8	25,365	22,632	12.1
Oklahoma	32	31	30	141	135	4.0	1,473	1,631	-9.7
<b>Pennsylvania Total</b>	<b>1,243</b>	<b>1,210</b>	<b>1,318</b>	<b>5,393</b>	<b>5,867</b>	<b>-8.1</b>	<b>63,766</b>	<b>64,680</b>	<b>-1.4</b>
Anthracite	21	21	30	93	131	-29.3	1,481	1,552	-4.6
Bituminous	1,222	1,189	1,289	5,301	5,736	-7.6	62,286	63,128	-1.3
Tennessee	48	46	49	204	217	-6.2	2,428	2,611	-7.0
Texas	767	746	713	3,377	3,134	7.8	38,517	41,580	-7.4
Utah	446	434	505	1,923	2,241	-14.2	23,393	24,344	-3.9
Virginia	480	467	435	2,093	1,931	8.4	24,886	24,732	0.6
<b>West Virginia Total</b>	<b>2,987</b>	<b>2,906</b>	<b>3,038</b>	<b>13,001</b>	<b>13,517</b>	<b>-3.8</b>	<b>158,195</b>	<b>152,552</b>	<b>3.7</b>
Northern	805	783	793	3,456	3,481	-0.7	40,536	41,430	-2.2
Southern	2,182	2,123	2,246	9,545	10,035	-4.9	117,658	111,122	5.9
Wyoming	8,060	8,895	8,672	38,800	39,405	-1.5	464,449	453,367	2.4
<b>Appalachian Total</b>	<b>7,287</b>	<b>7,089</b>	<b>7,517</b>	<b>31,655</b>	<b>33,493</b>	<b>-5.5</b>	<b>386,118</b>	<b>375,934</b>	<b>2.7</b>
<b>Interior Total</b>	<b>2,808</b>	<b>2,721</b>	<b>2,711</b>	<b>12,183</b>	<b>12,075</b>	<b>0.9</b>	<b>144,180</b>	<b>145,489</b>	<b>-0.9</b>
<b>Western Total</b>	<b>11,335</b>	<b>12,082</b>	<b>11,742</b>	<b>53,129</b>	<b>53,050</b>	<b>0.1</b>	<b>632,846</b>	<b>620,130</b>	<b>2.1</b>
<b>East of Miss. River</b>	<b>9,209</b>	<b>8,924</b>	<b>9,408</b>	<b>39,875</b>	<b>41,894</b>	<b>-4.8</b>	<b>485,734</b>	<b>474,298</b>	<b>2.4</b>
<b>West of Miss. River</b>	<b>12,221</b>	<b>12,967</b>	<b>12,562</b>	<b>57,093</b>	<b>56,725</b>	<b>0.6</b>	<b>677,410</b>	<b>667,255</b>	<b>1.5</b>
Bituminous and Lignite	21,409	21,870	21,940	96,875	98,488	-1.6	1,161,664	1,140,001	1.9
Anthracite	21	21	30	93	131	-29.3	1,481	1,552	-4.6
<b>U.S. Total</b>	<b>21,430</b>	<b>21,891</b>	<b>21,970</b>	<b>96,968</b>	<b>98,619</b>	<b>-1.7</b>	<b>1,163,144</b>	<b>1,141,553</b>	<b>1.9</b>
Railroad Cars Loaded	132,854	137,004	143,028	696,386	711,561	-2.1	7,637,394	7,415,690	3.0

**Source: Energy Information Administration**



## WEEKLY ELECTRIC OUTPUT

Essential Energy Information from EEI's Statistics Department

Volume 77 No. 5

### OUTPUT FOR WEEK ENDED - Jan 31, 2009

Feb 04, 2009

The net available amount of electric energy distributed by the Total Electric Utility Industry\* for the week ended Saturday, Jan 31, 2009 was 81,253 gigawatthours (GWh), according to the Edison Electric Institute. This is equivalent to 182 on the weekly electric output index.

### WEEKLY ELECTRIC OUTPUT BY GEOGRAPHIC DIVISION

(48 CONTIGUOUS STATES)

	Week Ended January 31		52 Weeks Ended January 31	
	GWh Output	% Increase Over Corresponding Week of 2008	GWh Output	% Increase Over Corresponding Period of 2008
New England	2,707	2.5	131,003	-2.5
Mid-Atlantic	9,379	6.0	452,899	-1.4
Central Industrial	15,220	0.4	707,661	-2.3
West Central	7,104	0.5	344,845	-2.4
Southeast	21,282	-2.8	1,087,195	-2.2
South Central	11,142	3.7	597,966	0.1
Rocky Mountain	5,031	-0.2	275,524	-1.1
Pacific Northwest	4,125	-3.3	166,941	3.8
Pacific Southwest	5,263	-1.4	291,190	0.4
Total United States	81,253	0.3	4,055,224	-1.3

### WEEKLY ELECTRIC OUTPUT IN PREVIOUS WEEKS--GWh

Week Ended	2009	Week Ended	2008	% Inc. (09/08)	52 Weeks Ended	2009	% Inc. (09/08)
Jan 10	77,282	Jan 12	75,302	2.6	Jan 10	4,057,375	-1.2
Jan 17	83,772	Jan 19	81,351	3.0	Jan 17	4,059,797	-1.1
Jan 24	81,621	Jan 26	86,441	-5.6	Jan 24	4,054,977	-1.4
Jan 31	81,253	Feb 02	81,005	0.3	Jan 31	4,055,224	-1.3
Jan 31	396,593	Feb 02	404,085	-1.9	YEAR TO DATE, FIRST 5 WEEKS		

### WEEKLY ELECTRIC OUTPUT INDEX--TOTAL U.S.\*

SEASONALLY ADJUSTED 1982 = 100

Week Ended	2009	Week Ended	2008	Week Ended	2007
Jan 10	181	Jan 12	174	Jan 13	172
Jan 17	191	Jan 19	183	Jan 20	179
Jan 24	186	Jan 26	195	Jan 27	179
Jan 31	182	Feb 02	187	Feb 03	190

\* Excludes Alaska and Hawaii.

+ Includes investor-owned companies, cooperatives and government-owned utilities.

Copyright © 2009 Edison Electric Institute. All rights reserved.

**WEEKLY ELECTRIC OUTPUT BY GEOGRAPHIC DIVISION  
(48 CONTIGUOUS STATES)**

	Week Ended			NMA CUMULATIVE JANUARY WEEK ONE TO			52 Weeks Ended		
	31-Jan 2009 GWh Output	2-Feb 2008 GWh Output	% Increase Over Corresponding Week of 2008	31-Jan 2009 GWh Output	2-Feb 2008 GWh Output	% Increase Over Corresponding Week of 2008	31-Jan 2009 GWh Output	2-Feb 2008 GWh Output	% Increase Over Corresponding Week of 2008
<b>New England</b>	2,707	2,641	2.5%	<b>13,386</b>	<b>13,175</b>	<b>1.6%</b>	131,003	134,386	-2.5%
<b>Mid-Atlantic</b>	9,379	8,850	6.0%	<b>45,859</b>	<b>43,999</b>	<b>4.2%</b>	452,899	459,469	-1.4%
<b>Central Industrial</b>	15,220	15,166	0.4%	<b>72,404</b>	<b>73,284</b>	<b>-1.2%</b>	707,661	724,060	-2.3%
<b>West Central</b>	7,104	7,069	0.5%	<b>34,216</b>	<b>34,808</b>	<b>-1.7%</b>	344,845	353,346	-2.4%
<b>Southeast</b>	21,282	21,892	-2.8%	<b>106,781</b>	<b>109,840</b>	<b>-2.8%</b>	1,087,195	1,111,259	-2.2%
<b>South Central</b>	11,142	10,741	3.7%	<b>53,060</b>	<b>56,178</b>	<b>-5.6%</b>	597,966	597,107	0.1%
<b>Rocky Mountain</b>	5,031	5,042	-0.2%	<b>25,001</b>	<b>25,963</b>	<b>-3.7%</b>	275,524	278,553	-1.1%
<b>Pacific Northwest</b>	4,125	4,264	-3.3%	<b>19,784</b>	<b>20,519</b>	<b>-3.6%</b>	166,941	160,810	3.8%
<b>Pacific Southwest</b>	5,263	5,340	-1.4%	<b>26,102</b>	<b>26,319</b>	<b>-0.8%</b>	291,190	290,171	0.4%
<b>Total United States *</b>	81,253	81,005	0.3%	<b>396,593</b>	<b>404,085</b>	<b>-1.9%</b>	4,055,224	4,109,161	-1.3%

Notes: EEI output data are an estimate of electricity load made available for distribution derived as weekly net generation + purchases from non-utilities + net imports - exports - sales for resale. It is not meant to be a measure of electricity generation for the U.S. EEI survey data represent the majority of national distribution (large utilities, large government power projects, some independent and large municipal power projects). The remaining segment of the industry (smaller producers) is estimated. Non-utility generation is captured via direct sales to utilities.

\* Excludes Alaska and Hawaii

SOURCE: Edison Electric Institute (EEI), *Weekly Electric Output Report*.

AMERICAN IRON AND STEEL INSTITUTE  
 1140 Connecticut Avenue, Suite 705  
 Washington, D.C. 20036

February 2, 2009

**ESTIMATED WEEKLY RAW STEEL \* PRODUCTION**

Period	Thousand Net Tons	Percent Change from Previous Period	Percent Capability Utilization**	Production by District		
				Week Ending		
				Jan. 31	Jan. 24	
<b>Week Ending</b>						
				North East Coast	87	88
				Pgh/Youngstown	77	71
January 31, 2009	1,006	-1.9	42.2	Lake Erie	21	23
January 31, 2008	2,154	-53.3	90.3	Detroit	23	24
January 24, 2009	1,025	-2.0	43.1	Indiana/Chicago	322	309
				Midwest	102	104
<b>Year-to-Date+</b>				Southern	337	368
				Western	37	41
January 31, 2009	4,510	-52.8	42.6	Total	1,006	1,028
January 31, 2008	9,537	-	90.3			

\*Raw steel production tonnage included in this report is estimated based on a sampling of steel producers. Therefore, this report should be used primarily to assess production trends. The AISI production report "AIS 7," produced monthly and available by subscription, provides a more accurate summary of steel production based on data supplied by companies representing approximately 75% of U.S. production capacity.

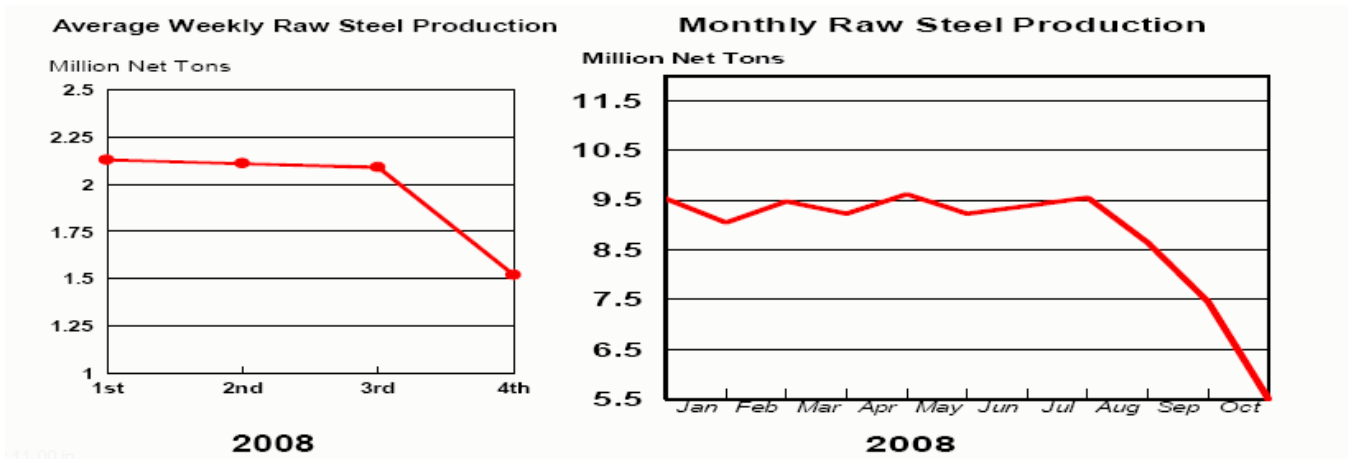
+ Includes revisions for previous months

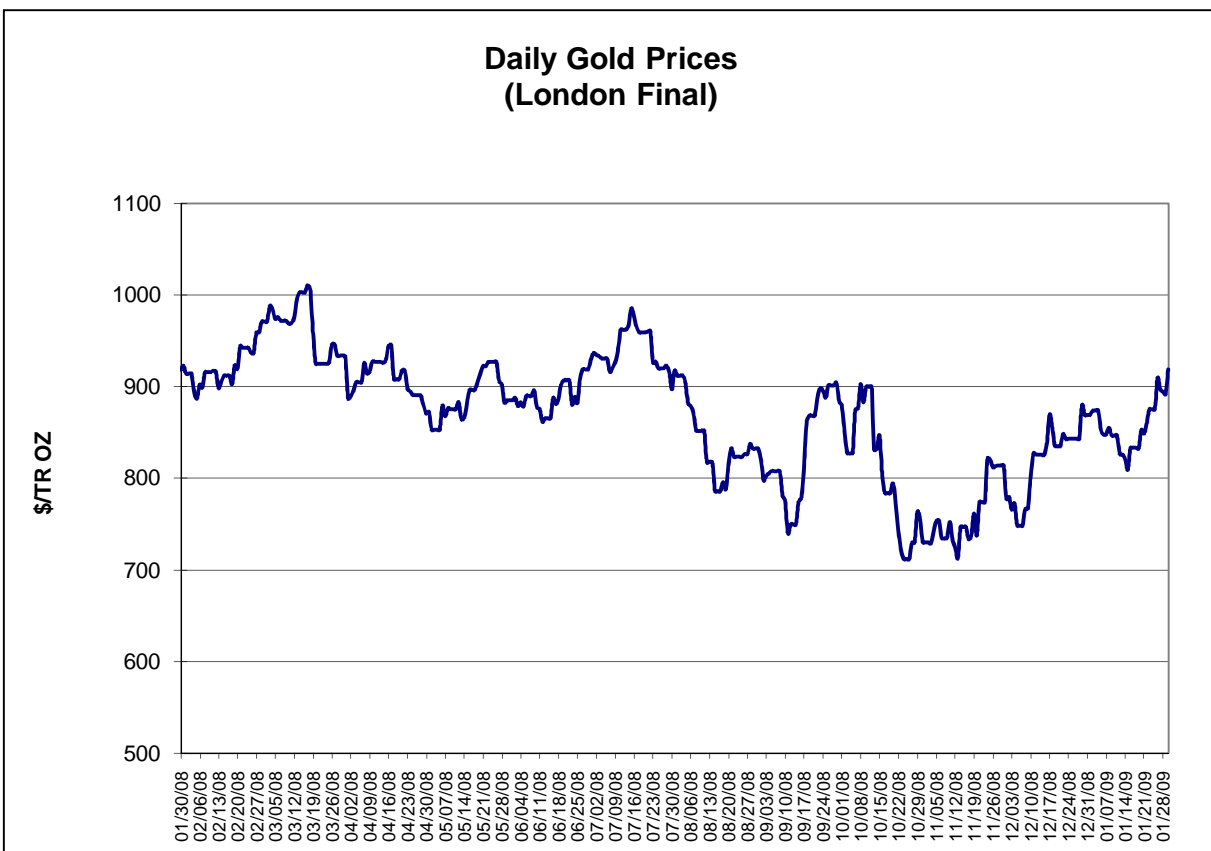
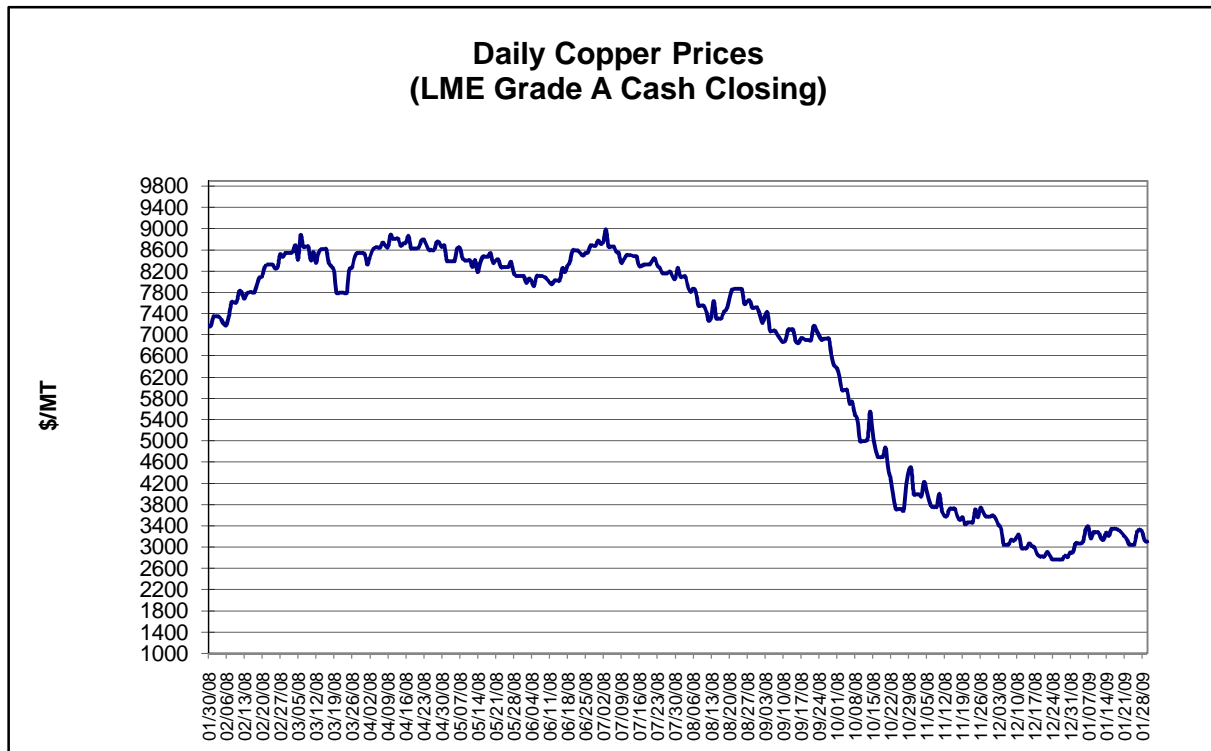
NOTE: Capability for the Third Quarter 2008 is approximately 31.4 million net tons vs 30.1 million net tons for the same period last year, and 31.0 million tons for the second quarter of 2008.

Capability -	2004 approx.	2.2 million tons/week
	2005	2.3
	2006	2.4
	2007	2.4
	2008	2.4

\*Steel in the first solid state after melting suitable for further processing or sale, including ingots, steel for castings and strand or pressure cast blooms, slabs, or other product forms.

\*\* Based on tonnage capability to produce raw steel for a sustained full order book.

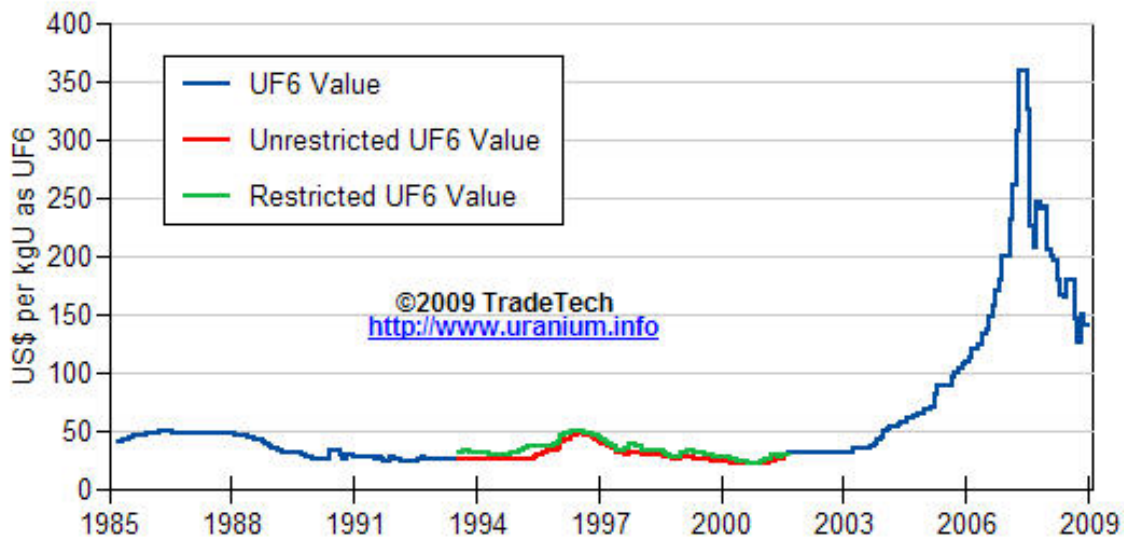




Data reflect closings on weekends and holidays.

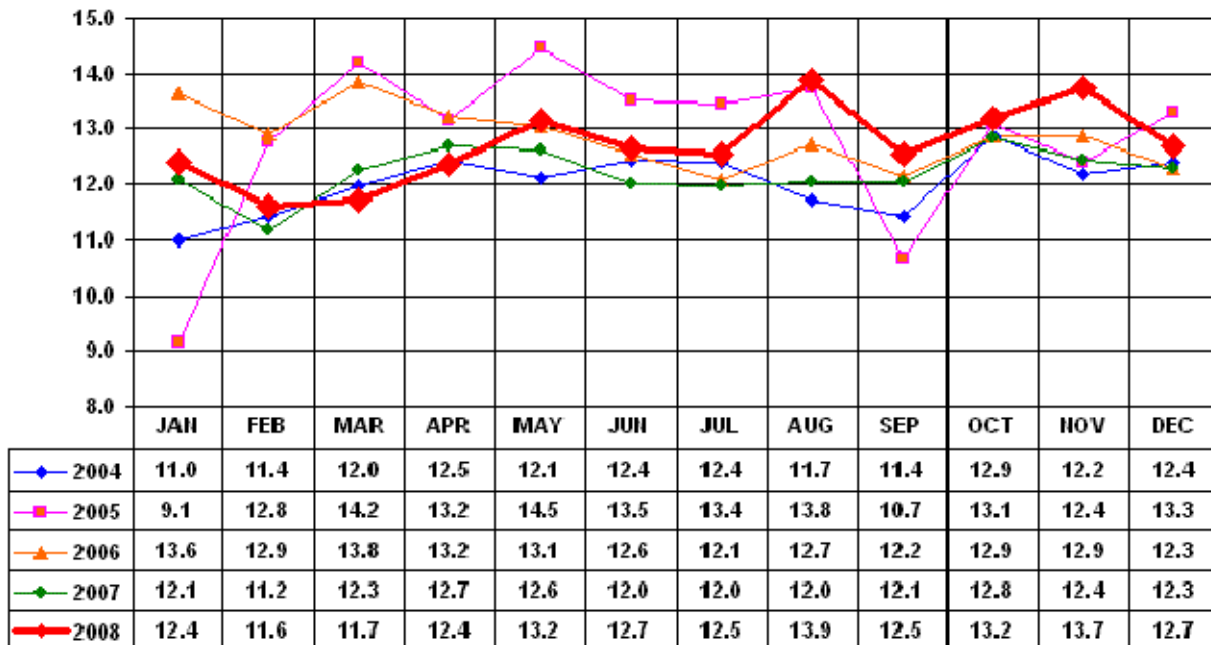
Source: Platts Metals Week

### Trade Tech's Uranium (UF6) Monthly Spot Prices (US\$/kg as UF6)



Source: Trade Tech, Uranium Info Website – <http://www.uranium.info>

### Coal and Coke Monthly Tonnage Indicator for Internal U.S. Waterways

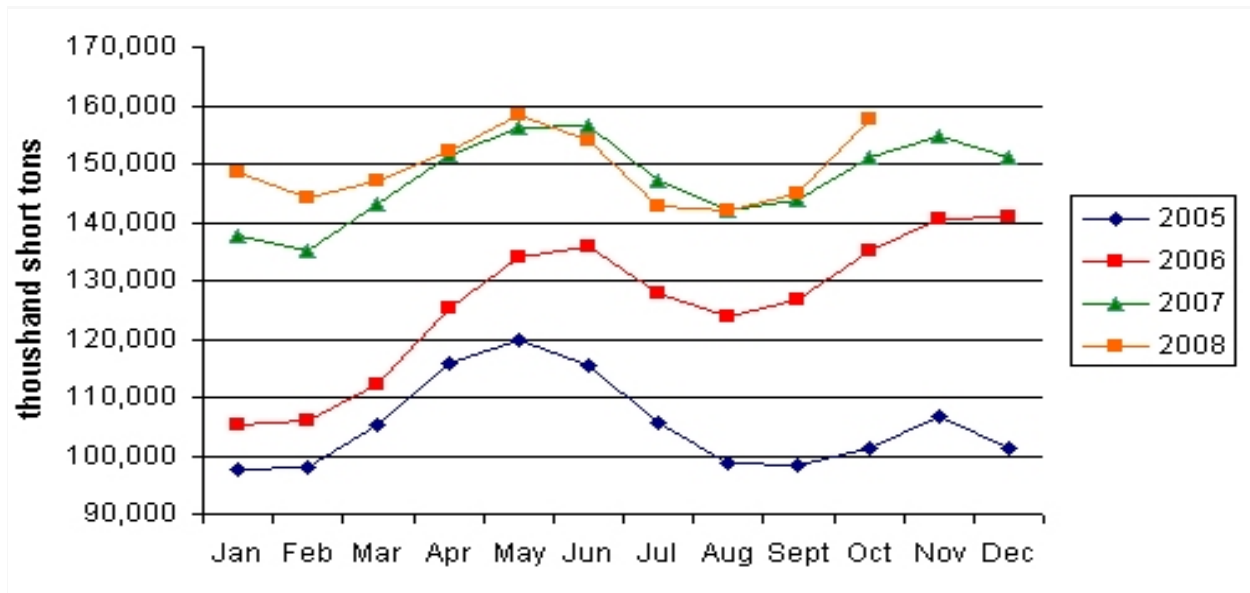


Source: U.S. Army Corps of Engineers, Waterborne Commerce Statistics Center

Average Weekly Coal Commodity Spot Prices (Dollars per Short Ton)					
Week Ended	Central Appalachia 12,500 Btu, 1.2 SO2	Northern Appalachia 13,000 Btu, <3.0 SO2	Illinois Basin 11,800 Btu, 5.0 SO2	Powder River Basin 8,800 Btu, 0.8 SO2	Uinta Basin 11,700 Btu, 0.8 SO2
12/05/08	\$89.80	\$101.50	\$78.00	\$12.50	\$73.00
12/12/08	\$81.55	\$101.50	\$78.00	\$12.50	\$73.00
12/19/08	\$81.55	\$101.50	\$78.00	\$13.00	\$73.00
1/2/09	\$80.85	\$88.75	\$78.00	\$13.00	\$73.00
1/9/09	\$76.80	\$76.00	\$78.00	\$13.00	\$73.00
1/16/09	\$66.45	\$76.00	\$60.00	\$13.00	\$73.00
1/23/09	\$66.45	\$69.00	\$60.00	\$13.00	\$73.00
1/30/09	\$66.45	\$69.00	\$55.00	\$13.00	\$73.00

Source: Energy Information Administration (from Platts *Coal Outlook*, "Weekly Price Survey")

### EIA Electric Power Sector Coal Stocks



Source: Energy Information Administration, *Coal News and Markets Report*

<b>USGS Production of Selected Mineral Commodities</b>	<b>2008 Year to Date - 3rd Quarter</b>	<b>2007 Year to Date - 3rd Quarter</b>	<b>Percent Change</b>
Aluminum, secondary (000 Mt.)	729.0	708.0	3%
Cement (Mil. Mt.)	65.6	70.0	-6%
Gypsum (Mil. Mt.)	14.1	16.4	-14%
Iron Ore (Mil. Mt.)	40.9	38.6	6%
Phosphate rock (Mil. Mt.)	23.0	22.1	4%
Sand & gravel, construction (Mil. Mt.)	754.0	940.0	-20%
Soda ash (Mil. Mt.)	8.4	8.3	1%
Stone, crushed (Mil. Mt.)	1,020.0	1,220.0	-16%
Zinc (000 Mt.)	628.0	574.0	9%

Source: U.S. Geological Survey, Mineral Industry Surveys, *U.S. Production of Selected Mineral Commodities in the Third Quarter 2008*, November 2008