
National Mining Association

Weekly Statistical Summary

February 8, 2008 Edition
(Data for Week Ending February 2, 2008)

Prepared by
National Mining Association



Suite 500 East, 101 Constitution Avenue, NW
Washington, DC, 20001
Phone (202) 463-2600
Visit us at <http://www.nma.org>

NMA Weekly Statistical Summary

Vol. 46, No. 05
Dated 02/08/08

PRODUCTION, CONSUMPTION & TRADE						
	Week Ended			Cumulative Jan 1 to		
	02/02/08	02/03/07	% Chng	02/02/08	02/03/07	% Chng
EIA Coal Production (000 Tons):						
Week Ended/Year to Date	22,443	22,339	0.5%	106,223	106,965	-0.7%
52 Weeks Ended	1,145,761	1,158,694	-1.1%			
Month Ended -- January						
	January 08/07		% Chng	Jan - Jan 08/07		% Chng
	100,712	99,361	1.4%	100,712	99,361	1.4%
MONTH ENDED AND CUMULATIVE NUMBERS ARE PRELIMINARY AND SUBJECT TO CHANGE						
DOC Bituminous Coal Trade (000 Tons)						
Exports:						
	November 07/06		% Chng	Jan - Nov 07/06		% Chng
Metallurgical	3,096	2,556	21.1%	29,528	25,353	16.5%
Steam	3,119	2,207	41.3%	23,273	19,810	17.5%
Imports:						
	2,889	2,630	9.8%	33,535	33,156	1.1%
Week Ended						
	02/02/08	02/03/07	% Chng	Cumulative Jan 1 to		
				02/02/08	02/03/07	% Chng
EEl Electric Output (Mil. Kwh)	81,005	83,459	-2.9%	404,085	395,537	2.2%
AISI Raw Steel Output (000 Tons)	2,134	1,877	13.7%	10,396	9,385	10.8%
EIA U.S. PETROLEUM DATA						
4-Week Averages 000 Barrels per Day						
Week Ending						
	02/01/08	02/01/07	% Chng	Cumulative Daily Averages		
				2008	2007	% Chng
PETROLEUM SUPPLY:						
Domestic Crude	5,017	5,196	-3.4	--	--	--
Net Imports (Incl. SPR)	10,253	10,183	0.7	--	--	--
SPR Stocks W/D or Added	-61	0	--	--	--	--
Other Stocks W/D or added	-613	-368	--	--	--	--
Natural Gas Liquids Prod.	2,512	2,250	11.6	--	--	--

Cumulative daily petroleum averages will be shown beginning with week ending April 4, 2008 data.



NMA
THE AMERICAN RESOURCE

National Mining Association Web Site: [http:// www.nma.org](http://www.nma.org)

EIA Estimated Weekly U.S. Coal Production Overview (Thousand Short Tons)

Coal-Producing Region and State	Week Ended			Year To Date			52 Weeks Ended		
	2/2/2008	1/26/2008	2/3/2007	2/2/2008	2/2/2007	Percent Change	2/2/2008	2/3/2007	Percent Change
Alabama	391	393	400	1,823	1,959	-7.0	19,046	18,844	1.1
Alaska	25	25	35	114	173	-34.2	1,258	1,467	-14.2
Arizona	122	122	158	585	775	-24.5	7,675	8,171	-6.1
Arkansas	2	2	1	10	6	49.8	84	28	201.5
Colorado	709	714	622	3,299	2,929	12.7	36,871	36,603	0.7
Illinois	682	686	742	3,154	3,584	-12.0	33,692	33,165	1.6
Indiana	716	721	702	3,355	3,400	-1.3	35,793	35,118	1.9
Kansas	10	10	8	45	41	12.1	446	444	0.4
Kentucky Total	2,298	2,312	2,291	10,743	11,143	-3.6	115,056	119,850	-4.0
Eastern	1,678	1,688	1,706	7,858	8,323	-5.6	86,100	92,554	-7.0
Western	620	624	585	2,885	2,819	2.3	28,955	27,297	6.1
Louisiana	72	80	23	411	305	34.8	3,244	4,041	-19.7
Maryland	41	41	46	192	227	-15.5	2,553	4,729	-46.0
Mississippi	57	44	47	291	284	2.3	3,633	3,710	-2.1
Missouri	4	4	5	20	22	-8.6	231	358	-35.5
Montana	839	844	784	3,918	3,672	6.7	42,321	41,855	1.1
New Mexico	461	464	427	2,167	2,079	4.2	24,483	25,722	-4.8
North Dakota	580	584	600	2,734	2,947	-7.2	29,312	30,309	-3.3
Ohio	468	471	436	2,189	2,109	3.8	22,260	22,440	-0.8
Oklahoma	37	38	32	175	158	10.8	1,752	1,935	-9.4
Pennsylvania Total	1,302	1,310	1,355	6,068	6,609	-8.2	64,698	66,213	-2.3
Anthracite	35	35	31	161	153	5.4	1,568	1,533	2.3
Bituminous	1,267	1,275	1,323	5,907	6,456	-8.5	63,130	64,679	-2.4
Tennessee	48	48	55	224	271	-17.2	2,550	2,779	-8.2
Texas	816	821	771	3,812	3,600	5.9	42,155	45,061	-6.5
Utah	449	452	473	2,093	2,301	-9.0	23,389	25,648	-8.8
Virginia	507	510	563	2,360	2,724	-13.4	26,495	29,526	-10.3
Washington	--	--	--	--	--	--	0	2,279	-100.0
West Virginia Total	3,047	3,066	3,124	14,213	15,139	-6.1	153,290	152,157	0.7
Northern	963	969	932	4,439	4,520	-1.8	44,341	42,478	4.4
Southern	2,084	2,097	2,193	9,774	10,619	-8.0	108,949	109,679	-0.7
Wyoming	8,759	8,734	8,639	42,227	40,509	4.2	453,474	446,240	1.6
Appalachian Total	7,482	7,528	7,684	34,928	37,361	-6.5	376,993	389,243	-3.1
Interior Total	3,017	3,030	2,916	14,159	14,220	-0.4	149,986	151,156	-0.8
Western Total	11,944	11,938	11,739	57,136	55,383	3.2	618,783	618,295	0.1
East of Miss. River	9,558	9,603	9,759	44,613	47,449	-6.0	479,067	488,532	-1.9
West of Miss. River	12,885	12,894	12,579	61,609	59,515	3.5	666,694	670,162	-0.5
Bituminous and Lignite	22,408	22,461	22,307	106,061	106,812	-0.7	1,144,193	1,157,160	-1.1
Anthracite	35	35	31	161	153	5.4	1,568	1,533	2.3
U.S. Total	22,443	22,497	22,339	106,223	106,965	-0.7	1,145,761	1,158,694	-1.1
Railroad Cars Loaded	143,028	141,488	141,152	711,561	699,903	1.7	7,415,690	7,439,160	-0.3

Source: Energy Information Administration

EIA Estimated Weekly and Monthly U.S. Coal Production Overview (Thousand Short Tons)

Coal-Producing Region and State	Week Ended		Year to Date		Month Ended		January - January		Percent Change
	2/2/2008	2/3/2007	2/2/2008	2/2/2007	January 2008	January 2007	2008	2007	
Alabama	391	400	1,823	1,959	1,743	1,801	1,743	1,801	-3.2
Alaska	25	35	114	173	109	159	109	159	-31.5
Arizona	122	158	585	775	560	712	560	712	-21.2
Arkansas	2	1	10	6	9	6	9	6	56.2
Colorado	709	622	3,299	2,929	3,112	2,732	3,112	2,732	13.9
Illinois	682	742	3,154	3,584	3,001	3,311	3,001	3,311	-9.4
Indiana	716	702	3,355	3,400	3,198	3,138	3,198	3,138	1.9
Kansas	10	8	45	41	44	37	44	37	16.8
Kentucky Total	2,298	2,291	10,743	11,143	10,251	10,269	10,251	10,269	-0.2
Eastern	1,678	1,706	7,858	8,323	7,507	7,662	7,507	7,662	-2.0
Western	620	585	2,885	2,819	2,744	2,607	2,744	2,607	5.3
Louisiana	72	23	411	305	392	297	392	297	31.8
Maryland	41	46	192	227	183	209	183	209	-12.1
Mississippi	57	47	291	284	276	269	276	269	2.3
Missouri	4	5	20	22	20	21	20	21	-4.7
Montana	839	784	3,918	3,672	3,690	3,434	3,690	3,434	7.5
New Mexico	461	427	2,167	2,079	2,069	1,915	2,069	1,915	8.1
North Dakota	580	600	2,734	2,947	2,618	2,707	2,618	2,707	-3.3
Ohio	468	436	2,189	2,109	2,086	1,947	2,086	1,947	7.1
Oklahoma	37	32	175	158	168	145	168	145	15.5
Pennsylvania Total	1,302	1,355	6,068	6,609	5,795	6,085	5,795	6,085	-4.8
Anthracite	35	31	161	153	154	141	154	141	9.6
Bituminous	1,267	1,323	5,907	6,456	5,641	5,944	5,641	5,944	-5.1
Tennessee	48	55	224	271	215	249	215	249	-13.7
Texas	816	771	3,812	3,600	3,585	3,372	3,585	3,372	6.3
Utah	449	473	2,093	2,301	1,997	2,121	1,997	2,121	-5.8
Virginia	507	563	2,360	2,724	2,248	2,515	2,248	2,515	-10.6
Washington	--	--	--	--	--	--	--	--	--
West Virginia Total	3,047	3,124	14,213	15,139	13,544	13,972	13,544	13,972	-3.1
Northern	963	932	4,439	4,520	4,230	4,169	4,230	4,169	1.5
Southern	2,084	2,193	9,774	10,619	9,314	9,803	9,314	9,803	-5.0
Wyoming	8,759	8,639	42,227	40,509	39,801	37,940	39,801	37,940	4.9
Appalachian Total	7,482	7,684	34,928	37,361	33,321	34,440	33,321	34,440	-3.3
Interior Total	3,017	2,916	14,159	14,220	13,436	13,204	13,436	13,204	1.8
Western Total	11,944	11,739	57,136	55,383	53,956	51,718	53,956	51,718	4.3
East of Miss. River	9,558	9,759	44,613	47,449	42,539	43,766	42,539	43,766	-2.8
West of Miss. River	12,885	12,579	61,609	59,515	58,173	55,596	58,173	55,596	4.6
Bituminous and Lignite	22,408	22,307	106,061	106,812	100,558	99,221	100,558	99,221	1.3
Anthracite	35	31	161	153	154	141	154	141	9.6
U.S. Total	22,443	22,339	106,223	106,965	100,712	99,361	100,712	99,361	1.4
Railroad Cars Loaded	143,028	141,152	711,561	699,903	--	--	--	--	--

Source: Energy Information Administration



WEEKLY ELECTRIC OUTPUT

Essential Energy Information from EEI's Statistics Department

Volume 76 No. 5

OUTPUT FOR WEEK ENDED - Feb 02, 2008

Feb 06, 2008

The net available amount of electric energy distributed by the Total Electric Utility Industry+ for the week ended Saturday, Feb 02, 2008 was 81,005 gigawatthours (GWh), according to the Edison Electric Institute. This is equivalent to 187 on the weekly electric output index.

WEEKLY ELECTRIC OUTPUT BY GEOGRAPHIC DIVISION

(48 CONTIGUOUS STATES)

	Week Ended February 02		52 Weeks Ended February 02	
	GWh Output	% Increase Over Corresponding Week of 2007	GWh Output	% Increase Over Corresponding Period of 2007
New England	2,641	-3.6	134,386	1.7
Mid-Atlantic	8,850	-3.5	459,469	3.2
Central Industrial	15,166	-1.5	724,060	3.7
West Central	7,069	-1.2	353,346	2.2
Southeast	21,892	-5.7	1,111,259	3.0
South Central	10,741	-8.2	597,107	-1.7
Rocky Mountain	5,042	1.4	278,553	5.8
Pacific Northwest	4,264	15.4	160,810	4.7
Pacific Southwest	5,340	-1.4	290,171	-0.9
Total United States	81,005	-2.9	4,109,161	2.3

WEEKLY ELECTRIC OUTPUT IN PREVIOUS WEEKS--GWh

Week Ended	2008	Week Ended	2007	% Inc. (08/07)	52 Weeks Ended	2008	% Inc. (08/07)
Jan 12	75,302	Jan 13	76,608	-1.7	Jan 12	4,106,463	2.9
Jan 19	81,351	Jan 20	81,592	-0.3	Jan 19	4,106,222	2.7
Jan 26	86,441	Jan 27	81,048	6.7	Jan 26	4,111,615	2.6
Feb 02	81,005	Feb 03	83,459	-2.9	Feb 02	4,109,161	2.3
Feb 02	404,085	Feb 03	395,537	2.2	YEAR TO DATE, FIRST 5 WEEKS		

WEEKLY ELECTRIC OUTPUT INDEX--TOTAL U.S.*

SEASONALLY ADJUSTED 1982 = 100

Week Ended	2008	Week Ended	2007	Week Ended	2006
Jan 12	174	Jan 13	172	Jan 14	164
Jan 19	183	Jan 20	179	Jan 21	165
Jan 26	195	Jan 27	179	Jan 28	166
Feb 02	187	Feb 03	190	Feb 04	169

* Excludes Alaska and Hawaii.

+ Includes investor-owned companies, cooperatives and government-owned utilities.

Copyright © 2008 Edison Electric Institute. All rights reserved.

WEEKLY ELECTRIC OUTPUT BY GEOGRAPHIC DIVISION (48 CONTIGUOUS STATES)

	Week Ended			NMA CUMULATIVE JANUARY 1 to			52 Weeks Ended		
	2-Feb 2008 GWh Output	3-Feb 2007 GWh Output	% Increase Over Corresponding Week of 2007	2-Feb 2008 GWh Output	3-Feb 2007 GWh Output	% Increase Over Corresponding Week of 2007	2-Feb 2008 GWh Output	3-Feb 2007 GWh Output	% Increase Over Corresponding Week of 2007
New England	2,641	2,740	-3.6%	13,175	13,234	-0.4%	134,386	132,134	1.7%
Mid-Atlantic	8,850	9,169	-3.5%	43,999	43,199	1.9%	459,469	445,266	3.2%
Central Industrial	15,166	15,397	-1.5%	73,284	71,363	2.7%	724,060	698,445	3.7%
West Central	7,069	7,156	-1.2%	34,808	33,679	3.4%	353,346	345,611	2.2%
Southeast	21,892	23,217	-5.7%	109,840	105,240	4.4%	1,111,259	1,078,724	3.0%
South Central	10,741	11,699	-8.2%	56,178	57,206	-1.8%	597,107	607,716	-1.7%
Rocky Mountain	5,042	4,971	1.4%	25,963	24,842	4.5%	278,553	263,252	5.8%
Pacific Northwest	4,264	3,695	15.4%	20,519	18,787	9.2%	160,810	153,595	4.7%
Pacific Southwest	<u>5,340</u>	<u>5,415</u>	-1.4%	<u>26,319</u>	<u>27,986</u>	-6.0%	<u>290,171</u>	<u>292,773</u>	-0.9%
Total United States *	81,005	83,459	-2.9%	404,085	395,536	2.2%	4,109,161	4,017,516	2.3%

Notes: EEI output data are an estimate of electricity load made available for distribution derived as weekly net generation + purchases from non-utilities + net imports - exports - sales for resale. It is not meant to be a measure of electricity generation for the U.S. EEI survey data represent the majority of national distribution (large utilities, large government power projects, some independent and large municipal power projects). The remaining segment of the industry (smaller producers) is estimated. Non-utility generation is captured via direct sales to utilities.

* Excludes Alaska and Hawaii

** Less than one-tenth of one percent

SOURCE: Edison Electric Institute (EEI), *Weekly Electric Output Report*.

AMERICAN IRON AND STEEL INSTITUTE
 1140 Connecticut Avenue, Suite 705
 Washington, D.C. 20036

February 4, 2008

ESTIMATED WEEKLY RAW STEEL* PRODUCTION

<u>Period</u>	<u>Thousand Net Tons</u>	<u>Percent Change from Previous Period</u>	<u>Percent Capability Utilization**</u>	<u>Production by District</u>		
				<u>Week Ending Feb 2</u>	<u>Jan 26</u>	
<u>Week Ending</u>				North East Coast	195	189
				Pgh/Youngstown	221	219
				Lake Erie	89	84
				Detroit	101	117
				Indiana/Chicago	493	460
				Midwest	268	271
				Southern	675	672
				Western	<u>92</u>	<u>89</u>
				Total	2134	2101
<u>Year-to-Date+</u>						
Feb 2, 2008	2,134	1.5	89.5			
Feb 2, 2007	1,877	13.6	78.2			
Jan 26, 2008	2,101	0.8	88.1			
Feb 2, 2008	10,396	10.7	86.6			
Feb 2, 2007	9,385	-	78.2			

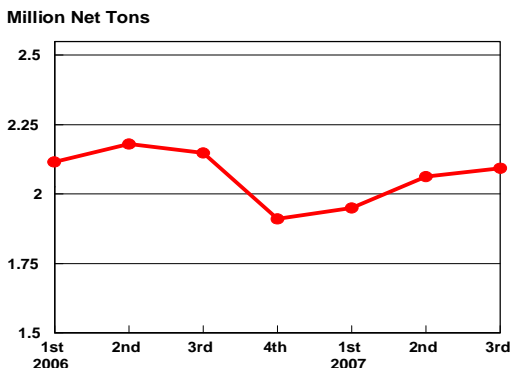
*Raw steel production tonnage included in this report is estimated based on a sampling of steel producers. Therefore, this report should be used primarily to assess production trends. The AISI production report "AIS 7," produced monthly and available by subscription, provides a more accurate summary of steel production based on data supplied by companies representing approximately 75% of U.S. production capacity.

+Includes revisions for previous months

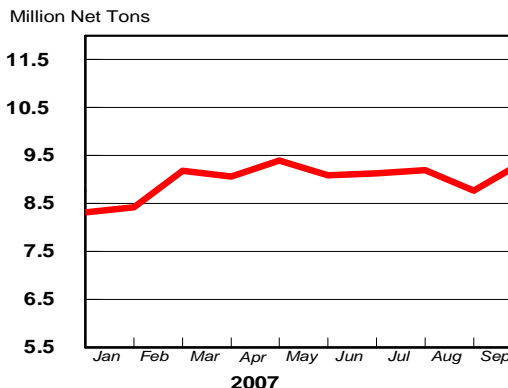
NOTE: Capability for the Fourth Quarter 2007 is approximately 31.3 million net tons vs 30.7 million net tons for the same period last year, and 30.1 million tons for the third quarter of 2007.

Capability -	2003 approx.	2.3 million tons/week
	2004	2.2
	2005	2.3
	2006	2.4
	2007	2.4

Average Weekly Raw Steel Production

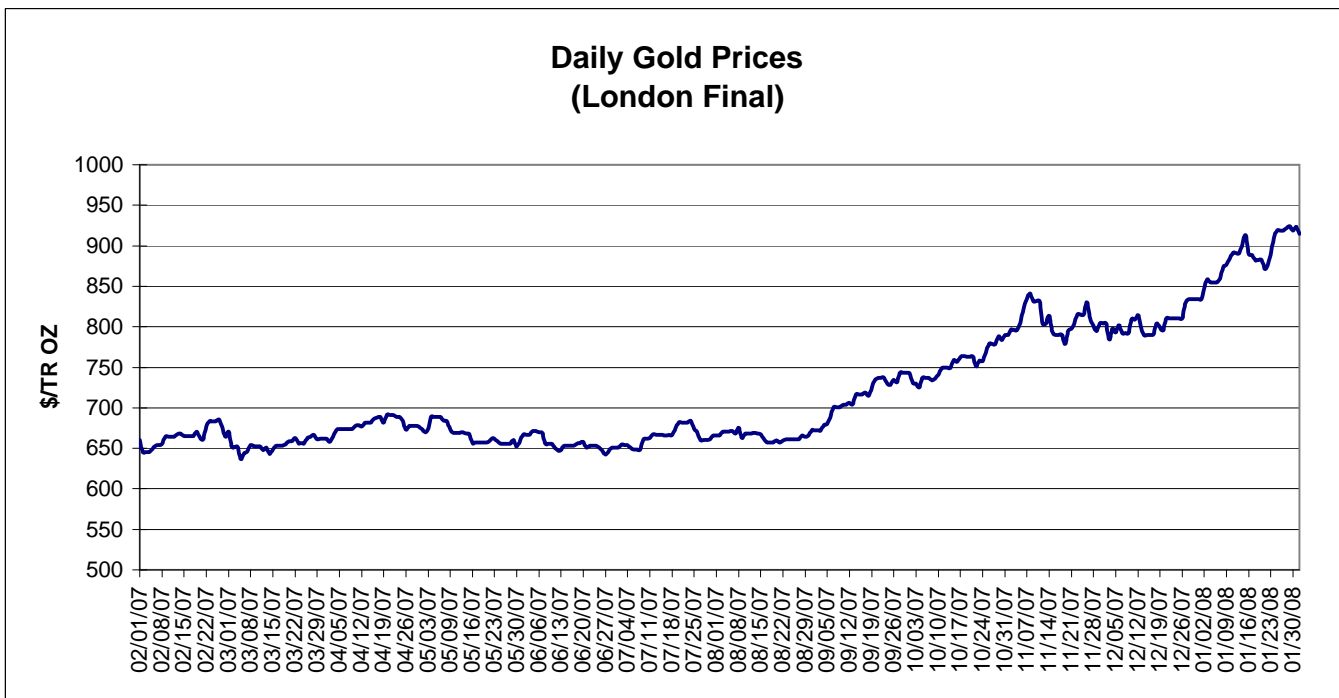
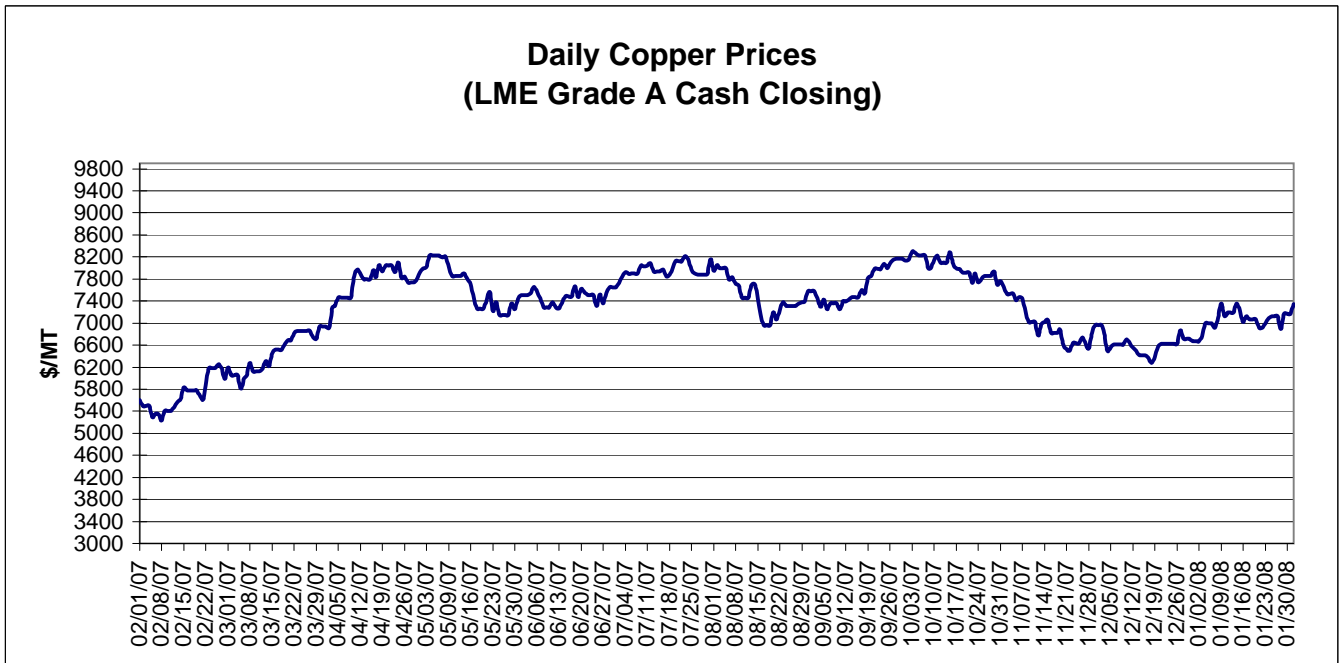


MONTHLY RAW STEEL PRODUCTION



*Steel in the first solid state after melting suitable for further processing or sale, including ingots, steel for castings and strand or pressure cast blooms, slabs, or other product forms.

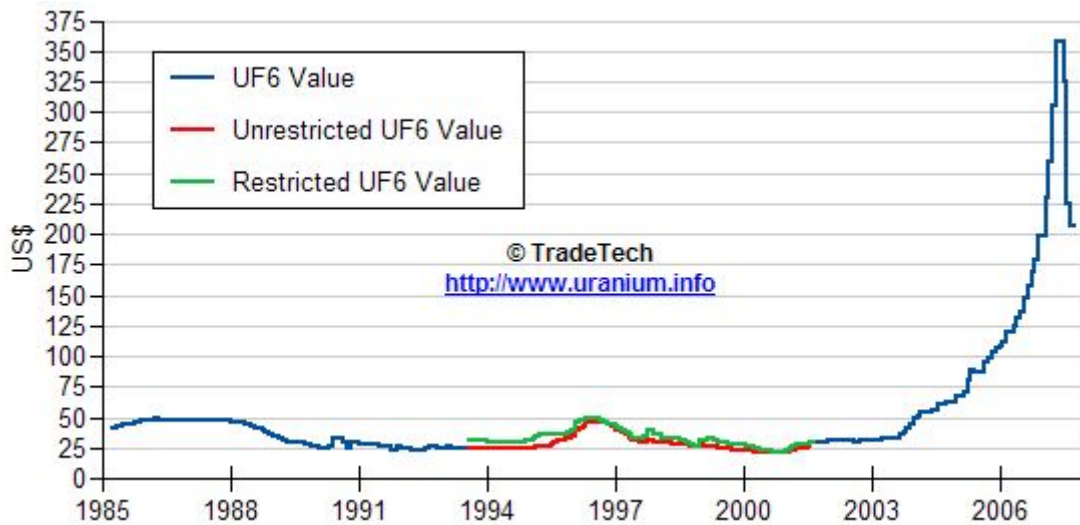
** Based on tonnage capability to produce raw steel for a sustained full order book.



Data reflect closings on weekends and holidays.

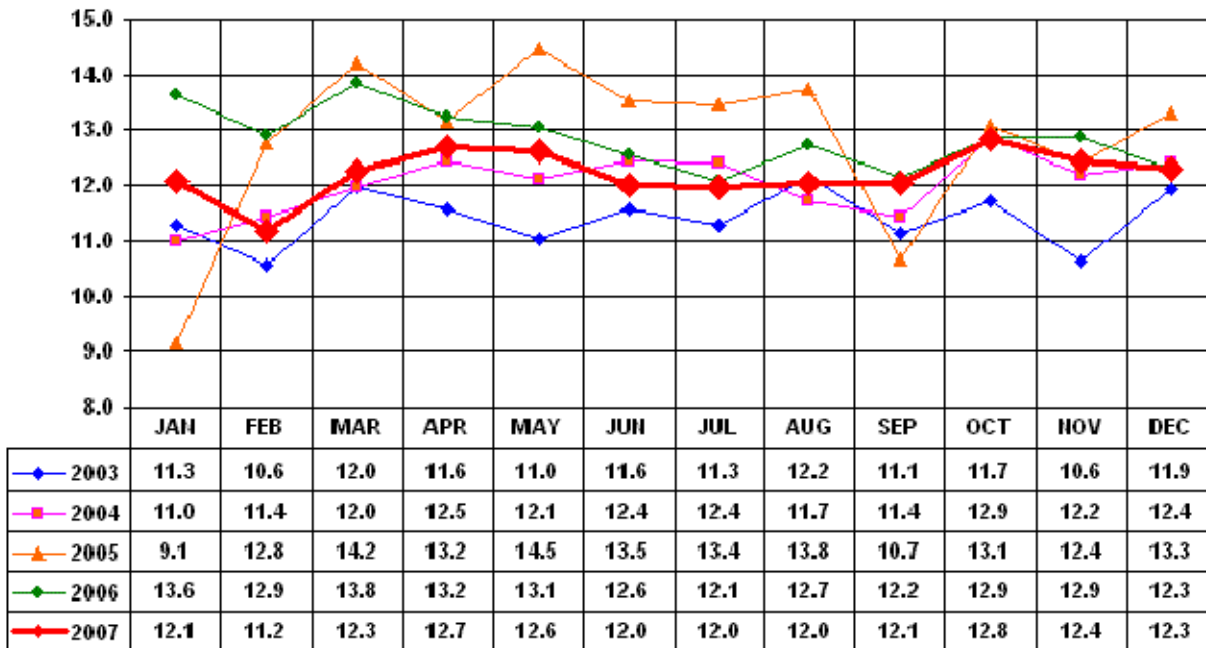
Source: Platts Metals Week

Trade Tech's Uranium (UF6) Monthly Spot Prices (US\$/kg as UF6)



Source: Trade Tech, Uranium Info Website – <http://www.uranium.info>

Coal and Coke Monthly Tonnage Indicator for Internal U.S. Waterways



Source: U.S. Army Corps of engineers, Waterborne Commerce Statistics Center

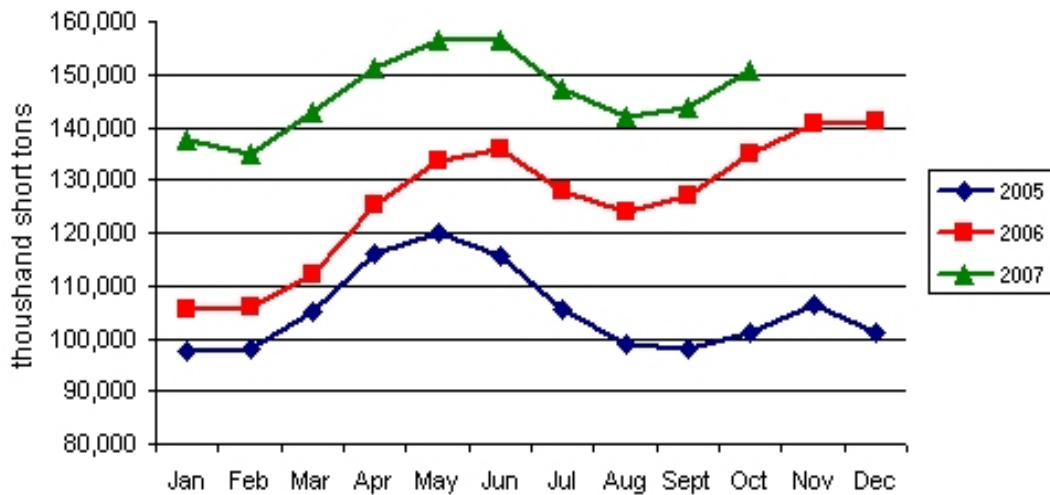
EIA Weekly Spot Coal Prices

The following average spot coal prices appear in the graphic below, for the previous and most recent weeks:

Week Ended	Central Appalachia 12,500 Btu, 1.2 SO2	Northern Appalachia 13,000 Btu, <3.0 SO2	Illinois Basin 11,800 Btu, 5.0 SO2	Powder River Basin 8,800 Btu, 0.8 SO2	Uinta Basin 11,700 Btu, 0.8 SO2
21-Dec-07	\$57.70	\$55.25	\$33.50	\$11.50	\$24.00
04-Jan-08	\$58.30	\$61.75	\$34.00	\$11.60	\$24.00
11-Jan-08	\$58.30	\$61.75	\$34.00	\$11.65	\$24.00
18-Jan-08	\$58.30	\$61.75	\$34.00	\$11.85	\$33.00
25-Jan-08	\$59.90	\$63.00	\$34.00	\$12.30	\$33.00
01-Feb-08	\$59.90	\$63.00	\$36.00	\$12.55	\$33.00

Source: Energy Information Administration (from Platts *Coal Outlook*, "Weekly Price Survey")

Electric Power Sector Coal Stocks



Source: Energy Information Administration