
National Mining Association

Weekly Statistical Summary

March 13, 2009 Edition
(Data for Week Ending March 7, 2009)

Prepared by
National Mining Association



Suite 500 East, 101 Constitution Avenue, NW
Washington, DC, 20001
Phone (202) 463-2600
Visit us at <http://www.nma.org>

NMA Weekly Statistical Summary

Vol. 47, No. 10
Dated 03/13/09

PRODUCTION, CONSUMPTION & TRADE						
	Week Ended			* Cumulative Jan 1 to		
	03/07/09	03/08/08	% Chng	03/07/09	03/07/08	% Chng
EIA Coal Production (000 Tons):						
Week Ended/Year to Date	22,549	22,135	1.9%	209,131	214,342	-2.4%
52 Weeks Ended	1,164,586	1,142,139	2.0%			
Month Ended -- February						
	February 09/08		% Chng	Jan - Feb 09/08		% Chng
	89,614	93,555	-4.2%	186,582	192,173	-2.9%
MONTH ENDED AND CUMULATIVE NUMBERS ARE PRELIMINARY AND SUBJECT TO CHANGE						
DOC Bituminous Coal Trade (000 Tons)						
Exports:	Dec 08/07		% Chng	Jan - Dec 08/07		% Chng
	2,257	2,753	-18.0%	42,620	32,280	32.0%
Metallurgical						
Steam *	4,317	3,095	39.5%	38,469	26,368	45.9%
Imports:	3,192	2,811	13.6%	34,208	36,347	-5.9%
EI Electric Output (Mil. Kwh)						
	Week Ended			* Cumulative Jan 1 to		
	03/07/09	03/08/08	% Chng	03/07/09	03/08/08	% Chng
EI Electric Output (Mil. Kwh)	74,365	75,181	-1.1%	771,409	790,586	-2.4%
AISI Raw Steel Output (000 Tons)	1,038	2,140	-51.5%	9,689	20,421	-52.6%
EIA U.S. PETROLEUM DATA						
4-Week Averages 000 Barrels per Day						
PETROLEUM SUPPLY:	Week Ending			Cumulative Daily Averages		
	03/06/09	03/06/08	% Chng	2008	2007	% Chng
Domestic Crude	5,349	5,118	4.5			
Net Imports (Incl. SPR)	8,899	9,580	-7.1			
SPR Stocks W/D or Added	-66	-22	--			
Other Stocks W/D or added	-20	-211	--			
Natural Gas Liquids Prod.	2,118	2,208	-4.1			

Cumulative daily petroleum averages will be shown beginning with week ending April 3, 2009 data. * Excludes lignite & anthracite



NMA

THE AMERICAN RESOURCE National Mining Association Web Site: [http:// www.nma.org](http://www.nma.org)

EIA Estimated Weekly U.S. Coal Production Overview (Thousand Short Tons)

Coal-Producing Region and State	Week Ended			Year to Date			52 Weeks Ended		
	3/7/2009	2/28/2009	3/8/2008	3/7/2009	3/7/2008	Percent Change	3/7/2009	3/8/2008	Percent Change
Alabama	415	426	434	3,865	4,218	-8.4	20,801	19,750	5.3
Alaska	25	26	29	232	284	-18.3	1,425	1,258	13.2
Arizona	168	173	145	1,558	1,426	9.2	8,156	7,842	4.0
Arkansas	1	1	1	10	11	-5.9	69	81	-14.9
Colorado	677	696	632	6,330	6,073	4.2	32,219	36,404	-11.5
Illinois	594	611	597	5,521	5,762	-4.2	32,855	31,151	5.5
Indiana	708	728	670	6,605	6,502	1.6	36,386	34,816	4.5
Kansas	5	5	6	48	59	-17.4	219	397	-44.8
Kentucky Total	2,162	2,224	2,300	20,098	22,334	-10.0	118,020	114,898	2.7
Eastern	1,620	1,666	1,736	15,045	16,882	-10.9	88,348	86,948	1.6
Western	542	558	564	5,053	5,453	-7.3	29,672	27,950	6.2
Louisiana	68	89	65	769	770	-0.2	3,835	3,249	18.1
Maryland	48	50	40	450	387	16.1	2,869	2,229	28.7
Mississippi	80	81	52	638	564	13.0	2,909	3,445	-15.6
Missouri	6	6	4	54	39	37.3	262	230	13.8
Montana	857	882	867	8,034	8,326	-3.5	44,389	44,112	0.6
New Mexico	575	591	354	5,372	3,443	56.0	27,566	23,670	16.5
North Dakota	557	573	539	5,203	5,270	-1.3	29,561	28,914	2.2
Ohio	472	485	467	4,406	4,527	-2.7	26,125	22,800	14.6
Oklahoma	33	34	30	304	294	3.6	1,366	1,622	-15.8
Pennsylvania Total	1,256	1,292	1,318	11,689	12,790	-8.6	64,223	64,517	-0.5
Anthracite	22	22	30	201	287	-29.8	1,626	1,544	5.3
Bituminous	1,235	1,270	1,289	11,488	12,503	-8.1	62,596	62,973	-0.6
Tennessee	48	49	49	445	472	-5.9	2,309	2,579	-10.4
Texas	775	797	713	7,259	6,848	6.0	39,336	41,312	-4.8
Utah	451	464	504	4,184	4,889	-14.4	23,648	24,517	-3.5
Virginia	485	499	435	4,523	4,213	7.4	24,912	24,093	3.4
West Virginia Total	3,018	3,104	3,038	28,125	29,451	-4.5	156,594	152,309	2.8
Northern	813	836	793	7,531	7,640	-1.4	40,792	40,865	-0.2
Southern	2,205	2,268	2,246	20,594	21,811	-5.6	115,802	111,444	3.9
Wyoming	9,066	8,891	8,845	83,411	85,387	-2.3	464,534	455,944	1.9
Appalachian Total	7,362	7,572	7,517	68,546	72,941	-6.0	386,180	375,225	2.9
Interior Total	2,812	2,909	2,703	26,261	26,302	-0.2	146,909	144,252	1.8
Western Total	12,375	12,295	11,915	114,323	115,099	-0.7	631,497	622,662	1.4
East of Miss. River	9,286	9,550	9,400	86,362	91,222	-5.3	488,002	472,588	3.3
West of Miss. River	13,263	13,227	12,735	122,768	123,120	-0.3	676,584	669,551	1.1
Bituminous and Lignite	22,527	22,754	22,106	208,929	214,055	-2.4	1,162,960	1,140,595	2.0
Anthracite	22	22	30	201	287	-29.8	1,626	1,544	5.3
U.S. Total	22,549	22,777	22,135	209,131	214,342	-2.4	1,164,586	1,142,139	2.0
Railroad Cars Loaded	144,776	146,888	145,939	1,414,639	1,447,655	-2.3	7,619,553	7,448,008	2.3

Source: Energy Information Administration



Volume 77 No. 10

OUTPUT FOR WEEK ENDED - Mar 07, 2009

Mar 11, 2009

The net available amount of electric energy distributed by the Total Electric Utility Industry+ for the week ended Saturday, Mar 07, 2009 was 74,365 gigawatthours (GWh), according to the Edison Electric Institute. This is equivalent to 186 on the weekly electric output index.

WEEKLY ELECTRIC OUTPUT BY GEOGRAPHIC DIVISION
(48 CONTIGUOUS STATES)

	Week Ended March 07		52 Weeks Ended March 07	
	GWh Output	% Increase Over Corresponding Week of 2008	GWh Output	% Increase Over Corresponding Period of 2008
New England	2,532	1.0	130,644	-2.2
Mid-Atlantic	8,768	3.6	452,670	-0.9
Central Industrial	13,541	-3.5	703,452	-2.7
West Central	6,417	-5.0	342,822	-3.1
Southeast	20,496	3.0	1,085,967	-2.0
South Central	9,914	-6.6	595,415	-0.3
Rocky Mountain	4,235	-3.4	274,977	-1.6
Pacific Northwest	3,378	-0.9	166,825	2.7
Pacific Southwest	5,084	-0.7	290,767	0.4
Total United States	74,365	-1.1	4,043,539	-1.5

WEEKLY ELECTRIC OUTPUT IN PREVIOUS WEEKS--GWh

Week Ended	2009	Week Ended	2008	% Inc. (09/08)	52 Weeks Ended	2009	% Inc. (09/08)
Feb 14	71,694	Feb 16	79,368	-9.7	Feb 14	4,050,498	-1.2
Feb 21	75,058	Feb 23	78,367	-4.2	Feb 21	4,047,189	-1.3
Feb 28	73,810	Mar 01	76,644	-3.7	Feb 28	4,044,355	-1.4
Mar 07	74,365	Mar 08	75,181	-1.1	Mar 07	4,043,539	-1.5
Mar 07	771,409	Mar 08	790,586	-2.4	YEAR TO DATE, FIRST 10 WEEKS		

WEEKLY ELECTRIC OUTPUT INDEX--TOTAL U.S.*
SEASONALLY ADJUSTED 1982 = 100

Week Ended	2009	Week Ended	2008	Week Ended	2007
Feb 14	163	Feb 16	186	Feb 17	194
Feb 21	175	Feb 23	188	Feb 24	185
Feb 28	182	Mar 01	187	Mar 03	179
Mar 07	186	Mar 08	187	Mar 10	184

* Excludes Alaska and Hawaii.

+ Includes investor-owned companies, cooperatives and government-owned utilities.

Copyright © 2009 Edison Electric Institute. All rights reserved.

**WEEKLY ELECTRIC OUTPUT BY GEOGRAPHIC DIVISION
(48 CONTIGUOUS STATES)**

	Week Ended			NMA CUMULATIVE JANUARY WEEK ONE TO			52 Weeks Ended		
	7-Mar 2009 GWh Output	8-Mar 2008 GWh Output	% Increase Over Corresponding Week of 2008	7-Mar 2009 GWh Output	8-Mar 2008 GWh Output	% Increase Over Corresponding Week of 2008	7-Mar 2009 GWh Output	8-Mar 2008 GWh Output	% Increase Over Corresponding Week of 2008
New England	2,532	2,507	1.0%	26,029	26,176	-0.6%	130,644	133,637	-2.2%
Mid-Atlantic	8,768	8,462	3.6%	89,185	87,554	1.9%	452,670	456,651	-0.9%
Central Industrial	13,541	14,025	-3.5%	141,474	146,563	-3.5%	703,452	722,760	-2.7%
West Central	6,417	6,757	-5.0%	66,886	69,502	-3.8%	342,822	353,813	-3.1%
Southeast	20,496	19,905	3.0%	208,170	212,456	-2.0%	1,085,967	1,107,662	-2.0%
South Central	9,914	10,613	-6.6%	102,101	107,771	-5.3%	595,415	597,189	-0.3%
Rocky Mountain	4,235	4,384	-3.4%	48,097	49,607	-3.0%	274,977	279,488	-1.6%
Pacific Northwest	3,378	3,407	-0.9%	37,597	38,447	-2.2%	166,825	162,398	2.7%
Pacific Southwest	5,084	5,121	-0.7%	51,870	52,510	-1.2%	290,767	289,644	0.4%
Total United States *	74,365	75,181	-1.1%	771,409	790,586	-2.4%	4,043,539	4,103,242	-1.5%

Notes: EEI output data are an estimate of electricity load made available for distribution derived as weekly net generation + purchases from non-utilities + net imports - exports - sales for resale. It is not meant to be a measure of electricity generation for the U.S. EEI survey data represent the majority of national distribution (large utilities, large government power projects, some independent and large municipal power projects). The remaining segment of the industry (smaller producers) is estimated. Non-utility generation is captured via direct sales to utilities.

* Excludes Alaska and Hawaii

SOURCE: Edison Electric Institute (EEI), *Weekly Electric Output Report*.

AMERICAN IRON AND STEEL INSTITUTE
 1140 Connecticut Avenue, Suite 705
 Washington, D.C. 20036

March 9, 2009

ESTIMATED WEEKLY RAW STEEL * PRODUCTION

Period	Thousand Net Tons	Percent Change from Previous Period	Percent Capability Utilization**	Production by District		
				Week Ending		
				Mar. 7	Feb. 28	
<u>Week Ending</u>				North East Coast	74	70
				Pgh/Youngstown	92	91
March 7, 2009	1,038	6.0	43.5	Lake Erie	9	9
March 7, 2008	2,140	-51.5	89.7	Detroit	39	38
February 28, 2009	980	-1.8	41.1	Indiana/Chicago	329	298
				Midwest	99	100
<u>Year-to-Date+</u>				Southern	346	322
March 7, 2009	9,689	-52.6	43.4	Western	50	52
March 7, 2008	20,421	-	90.5	Total	1,038	980

*Raw steel production tonnage included in this report is estimated based on a sampling of steel producers. Therefore, this report should be used primarily to assess production trends. The AISI production report "AIS 7," produced monthly and available by subscription, provides a more accurate summary of steel production based on data supplied by companies representing approximately 75% of U.S. production capacity.

+ Includes revisions for previous months

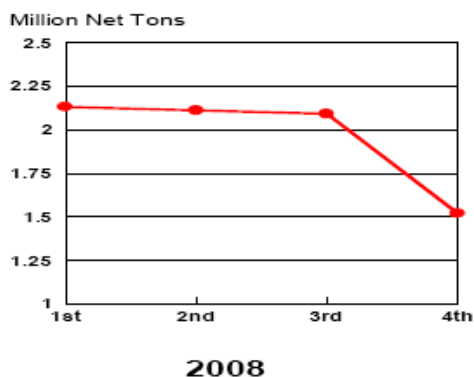
NOTE: Capability for the Third Quarter 2008 is approximately 31.4 million net tons vs 31.3 million net tons for the same period last year, and 31.4 million tons for the Third quarter of 2008.

Capability -	2004 approx.	2.2 million tons/week
	2005	2.3
	2006	2.4
	2007	2.4
	2008	2.4

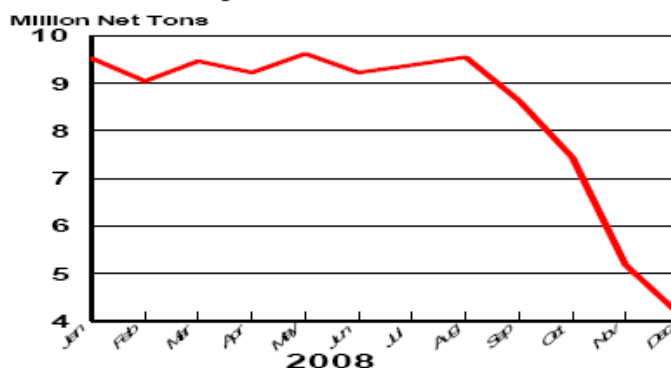
*Steel in the first solid state after melting suitable for further processing or sale, including ingots, steel for castings and strand or pressure cast blooms, slabs, or other product forms.

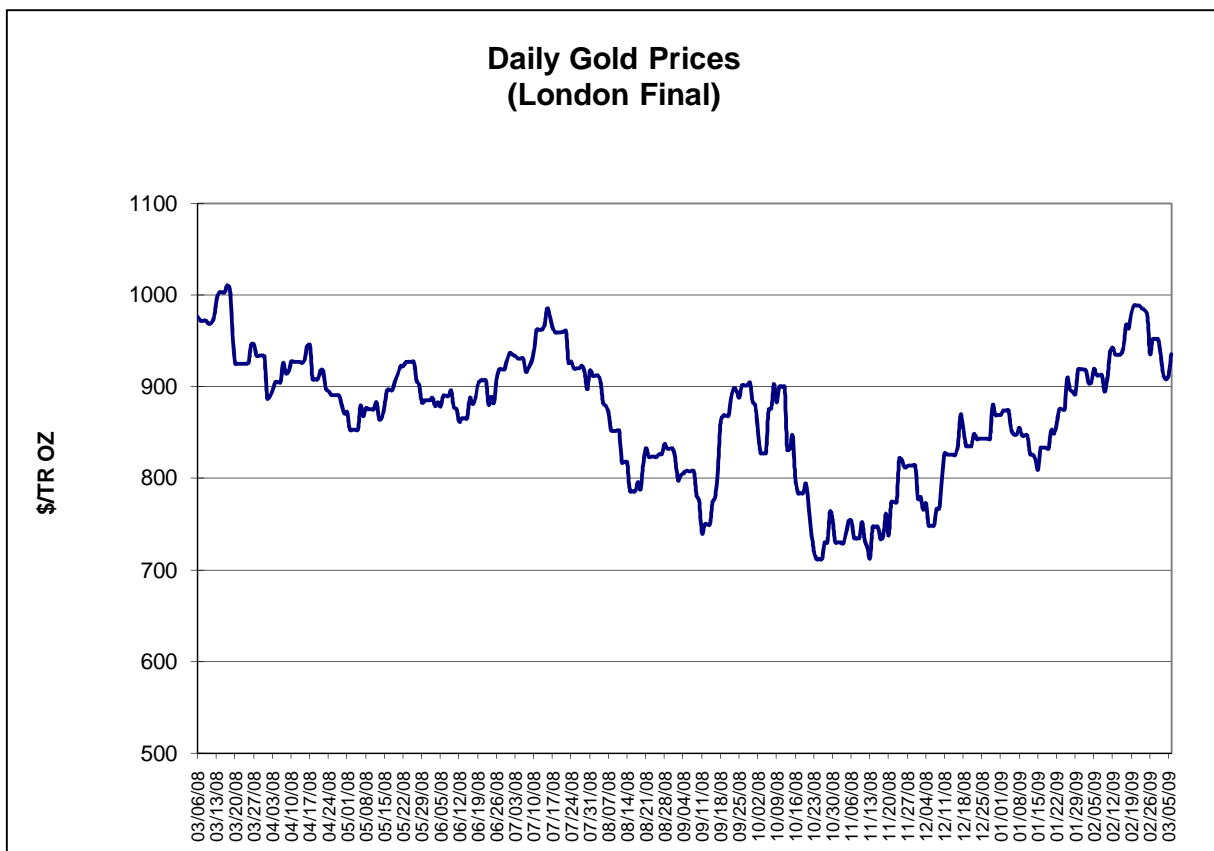
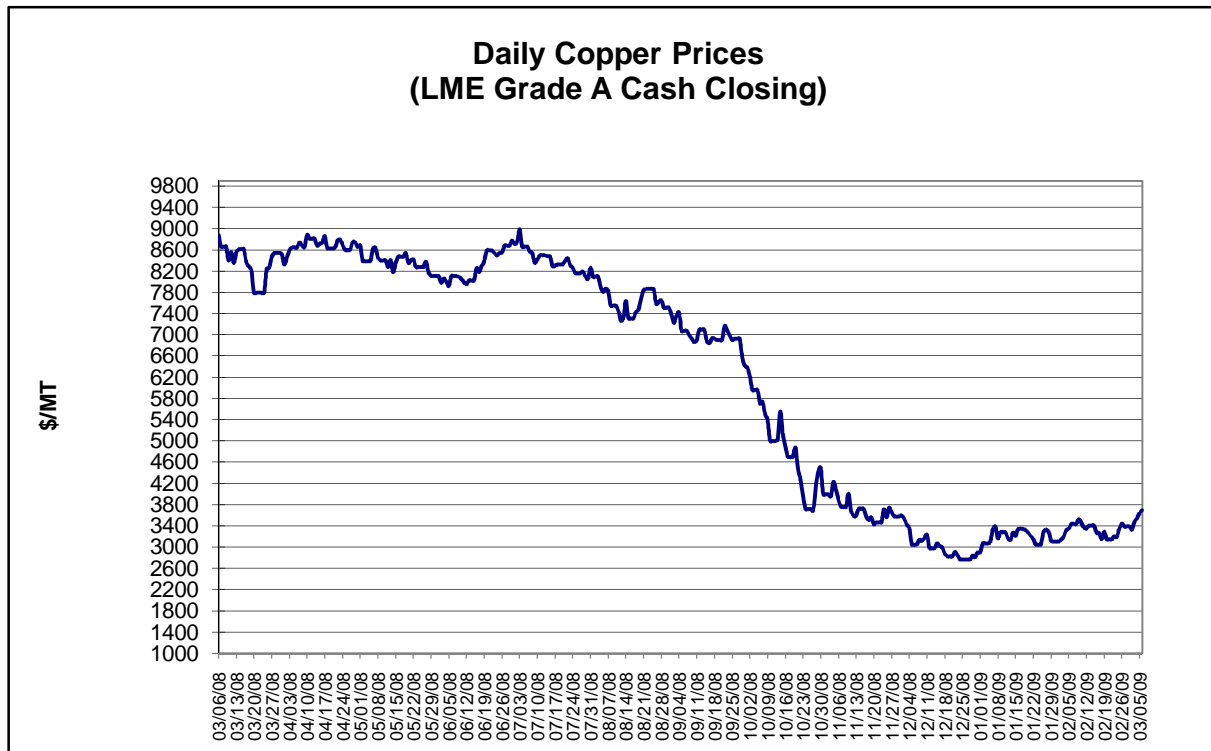
** Based on tonnage capability to produce raw steel for a sustained full order book.

Average Weekly Raw Steel Production



Monthly Raw Steel Production

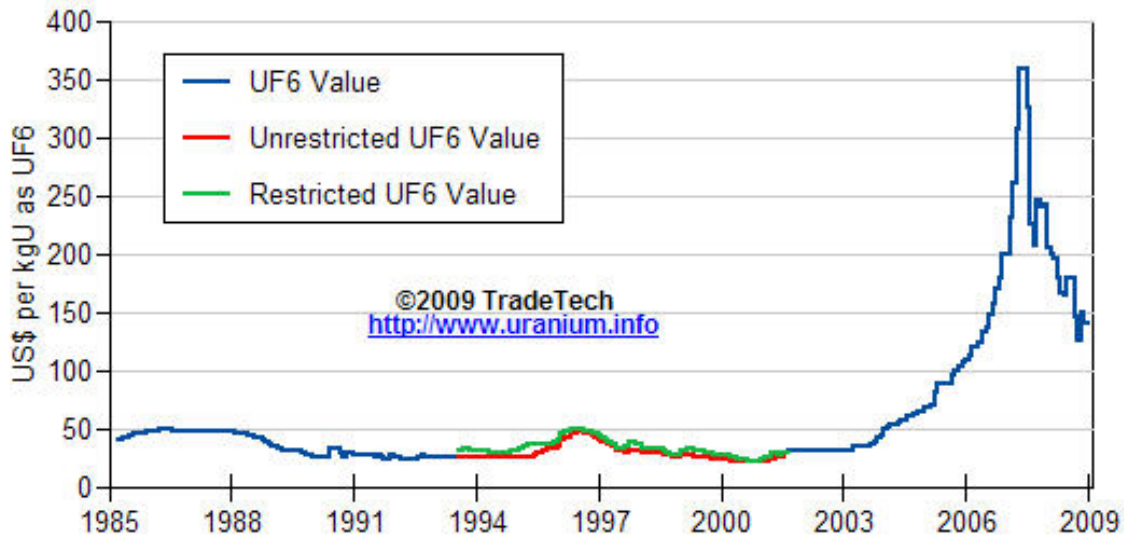




Data reflect closings on weekends and holidays.

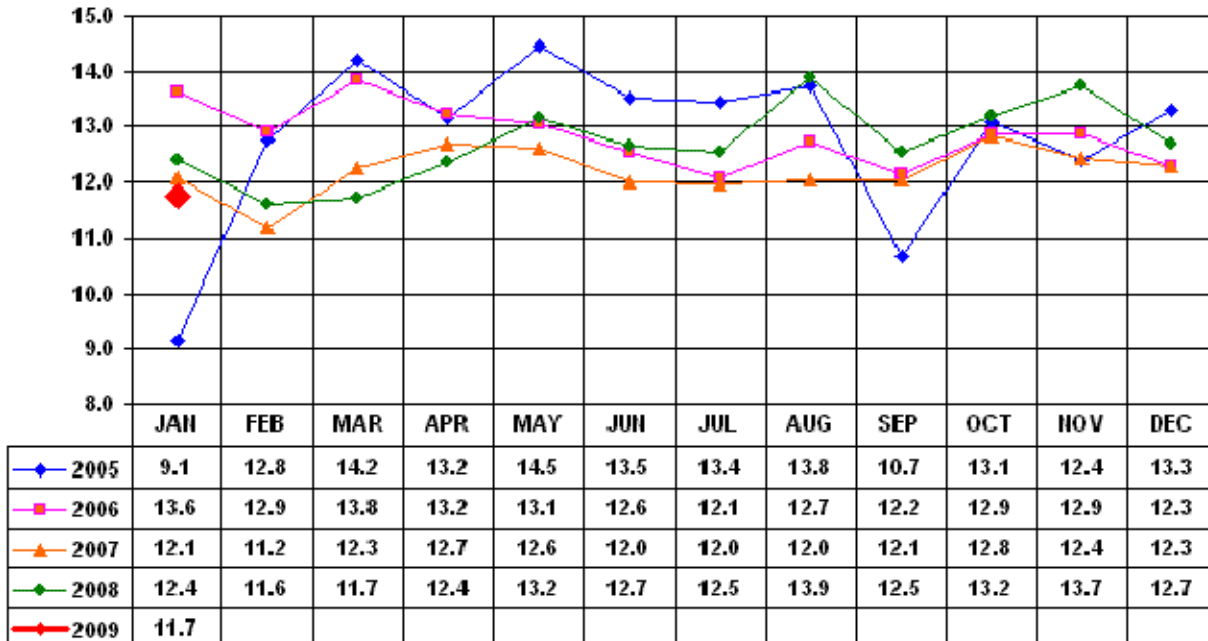
Source: Platts Metals Week

Trade Tech's Uranium (UF6) Monthly Spot Prices (US\$/kg as UF6)



Source: Trade Tech, Uranium Info Website – <http://www.uranium.info>

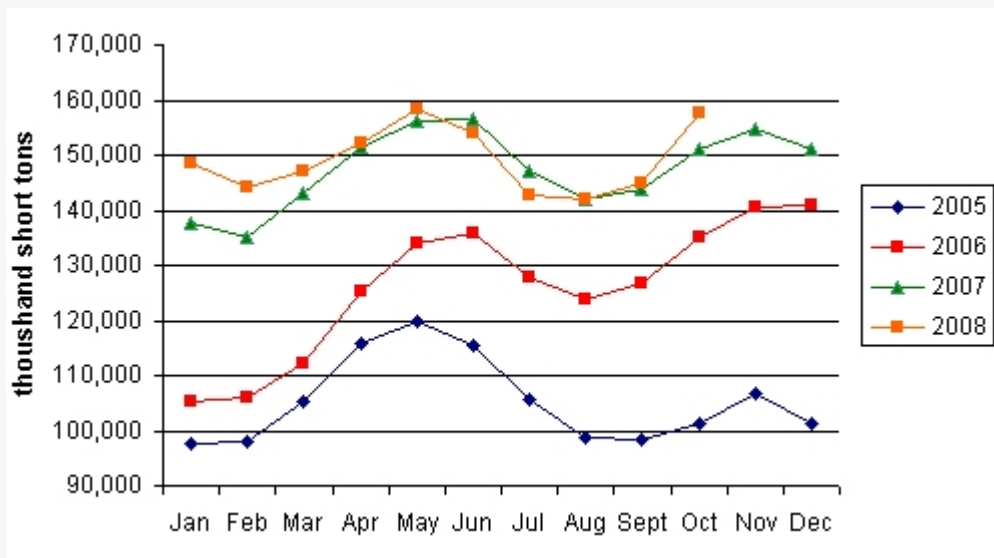
Coal and Coke Monthly Tonnage Indicator for Internal U.S. Waterways



Source: U.S. Army Corps of Engineers, Waterborne Commerce Statistics Center

Average Weekly Coal Commodity Spot Prices (Dollars per Short Ton)					
Week Ended	Central Appalachia 12,500 Btu, 1.2 SO2	Northern Appalachia 13,000 Btu, <3.0 SO2	Illinois Basin 11,800 Btu, 5.0 SO2	Powder River Basin 8,800 Btu, 0.8 SO2	Uinta Basin 11,700 Btu, 0.8 SO2
1/16/09	\$66.45	\$76.00	\$60.00	\$13.00	\$73.00
1/23/09	\$66.45	\$69.00	\$60.00	\$13.00	\$73.00
1/30/09	\$66.45	\$69.00	\$55.00	\$13.00	\$73.00
2/06/09	\$66.45	\$66.00	\$55.00	\$13.00	\$73.00
2/13/09	\$68.20	\$66.00	\$55.00	\$13.00	\$73.00
2/20/09	\$68.20	\$66.00	\$55.00	\$13.00	\$73.00
2/27/09	\$68.20	\$66.00	\$55.00	\$13.00	\$73.00
3/6/09	\$68.20	\$58.00	\$55.00	\$13.00	\$73.00

Electric Power Sector Coal Stocks
(Thousand Short Tons)



Source: Energy Information Administration, *Coal News and Markets Report*

USGS Production of Selected Mineral Commodities	2008 Year to Date - 4th Quarter	2007 Year to Date - 4th Quarter	Percent Change
Aluminum, secondary (000 Mt.)	981.0	924.0	6%
Cement (Mil. Mt.)	84.9	92.3	-8%
Gypsum (Mil. Mt.)	18.1	21.4	-15%
Iron Ore (Mil. Mt.)	53.0	52.0	2%
Phosphate rock (Mil. Mt.)	30.0	29.7	1%
Sand & gravel, construction (Mil. Mt.)	1,040.0	1,230.0	-15%
Soda ash (Mil. Mt.)	11.3	11.1	2%
Stone, crushed (Mil. Mt.)	1,340.0	1,600.0	-16%
Zinc (000 Mt.)	842.0	769.0	9%

Source: U.S. Geological Survey, Mineral Industry Surveys, *U.S. Production of Selected Mineral Commodities in the Fourth Quarter 2008, February 2008*