
National Mining Association

Weekly Statistical Summary

March 14, 2008 Edition
(Data for Week Ending March 8, 2008)

Prepared by
National Mining Association



Suite 500 East, 101 Constitution Avenue, NW
Washington, DC, 20001
Phone (202) 463-2600
Visit us at <http://www.nma.org>

NMA Weekly Statistical Summary

Vol. 46, No. 10
Dated 03/14/08

PRODUCTION, CONSUMPTION & TRADE						
	Week Ended			* Cumulative Jan 1 to		
	03/08/08	03/10/07	% Chng	03/08/08	03/08/08	% Chng
EIA Coal Production (000 Tons):						
Week Ended/Year to Date	22,610	22,805	-0.9%	220,649	214,848	2.7%
52 Weeks Ended	1,145,801	1,160,363	-1.3%			
* Due to leap year, 2008 cumulative reflects one extra day of tonnage.						
Month Ended -- February	February 08/07		% Chng	Jan - Feb 08/07		% Chng
	95,567	88,209	8.3%	196,280	187,570	4.6%
MONTH ENDED AND CUMULATIVE NUMBERS ARE PRELIMINARY AND SUBJECT TO CHANGE						
DOC Bituminous Coal Trade (000 Tons)						
Exports:	December 07/06		% Chng	Jan - Dec 07/06		% Chng
Metallurgical	2,753	2,255	22.1%	32,280	27,607	16.9%
Steam	3,095	1,897	63.2%	26,368	21,707	21.5%
Imports:	2,889	2,630	9.8%	36,347	36,246	0.3%
	Week Ended			* Cumulative Jan 1 to		
	03/08/08	03/10/07	% Chng	03/08/08	03/10/07	% Chng
EEl Electric Output (Mil. Kwh)	75,181	74,786	0.5%	790,586	787,956	0.3%
AISI Raw Steel Output (000 Tons)	2,113	2,073	1.9%	21,082	19,962	5.6%
EIA U.S. PETROLEUM DATA						
4-Week Averages						
000 Barrels per Day						
PETROLEUM SUPPLY:	Week Ending			Cumulative Daily Averages		
	03/07/08	03/07/07	% Chng	2008	2007	% Chng
Domestic Crude	5,057	5,154	-1.9	--	--	--
Net Imports (Incl. SPR)	9,985	9,297	7.4	--	--	--
SPR Stocks W/D or Added	-17	0	--	--	--	--
Other Stocks W/D or added	-377	62	--	--	--	--
Natural Gas Liquids Prod.	2,611	2,265	15.3	--	--	--
Cumulative daily petroleum averages will be shown beginning with week ending April 4, 2008 data.						



NMA

THE AMERICAN RESOURCE

National Mining Association Web Site: [http:// www.nma.org](http://www.nma.org)

EIA Estimated Weekly U.S. Coal Production Overview (Thousand Short Tons)

Coal-Producing Region and State	Week Ended			Year to Date		Percent Change	52 Weeks Ended		Percent Change
	3/8/2008	3/1/2008	3/10/2007	3/8/2008	3/8/2007		3/8/2008	3/10/2007	
Alabama	391	407	417	3,799	3,907	-2.8	19,322	18,803	2.8
Alaska	25	26	36	238	342	-30.3	1,213	1,519	-20.2
Arizona	122	127	164	1,200	1,535	-21.8	7,615	8,202	-7.1
Arkansas	2	2	1	20	13	56.8	90	33	171.0
Colorado	709	738	646	6,886	5,950	15.7	37,149	37,120	0.1
Illinois	682	709	777	6,602	7,235	-8.7	31,728	33,873	-6.3
Indiana	716	745	703	6,978	6,557	6.4	35,270	35,100	0.5
Kansas	10	10	9	95	80	18.2	433	462	-6.3
Kentucky Total	2,298	2,391	2,407	22,366	22,480	-0.5	114,591	119,600	-4.2
Eastern	1,678	1,746	1,800	16,344	16,833	-2.9	86,109	92,107	-6.5
Western	620	645	607	6,022	5,647	6.6	28,482	27,494	3.6
Louisiana	71	109	16	856	651	31.6	3,263	4,074	-19.9
Maryland	41	43	48	399	451	-11.4	2,234	4,425	-49.5
Mississippi	51	60	88	552	647	-14.6	3,428	3,774	-9.2
Missouri	4	5	5	43	44	-4.2	233	323	-27.7
Montana	839	873	814	8,161	7,486	9.0	43,843	42,239	3.8
New Mexico	461	479	443	4,497	4,137	8.7	24,717	25,659	-3.7
North Dakota	580	604	623	5,668	5,837	-2.9	29,312	30,373	-3.5
Ohio	468	487	453	4,556	4,219	8.0	22,795	22,295	2.2
Oklahoma	37	39	33	364	313	16.3	1,692	1,883	-10.1
Pennsylvania Total	1,302	1,355	1,410	12,654	13,187	-4.0	64,363	66,693	-3.5
Anthracite	35	36	32	338	304	11.3	1,585	1,539	3.0
Bituminous	1,267	1,319	1,378	12,316	12,883	-4.4	62,778	65,155	-3.6
Tennessee	48	50	57	467	537	-13.0	2,563	2,770	-7.5
Texas	816	850	801	7,941	7,354	8.0	42,313	44,835	-5.6
Utah	449	468	491	4,367	4,585	-4.8	23,983	25,429	-5.7
Virginia	507	528	587	4,924	5,468	-9.9	24,710	29,406	-16.0
Washington	--	--	--	--	--	--	0	1,989	-100.0
West Virginia Total	3,047	3,171	3,224	29,625	30,056	-1.4	152,127	152,718	-0.4
Northern	963	1,002	947	9,310	8,838	5.3	42,228	42,647	-1.0
Southern	2,084	2,169	2,276	20,315	21,218	-4.3	109,899	110,071	-0.2
Wyoming	8,934	8,989	8,552	87,391	81,777	6.9	456,813	446,765	2.2
Appalachian Total	7,482	7,786	7,996	72,768	74,657	-2.5	374,223	389,218	-3.9
Interior Total	3,010	3,175	3,040	29,473	28,541	3.3	146,933	151,851	-3.2
Western Total	12,119	12,303	11,768	118,407	111,650	6.1	624,645	619,295	0.9
East of Miss. River	9,551	9,946	10,171	92,923	94,742	-1.9	473,131	489,458	-3.3
West of Miss. River	13,060	13,317	12,634	127,725	120,105	6.3	672,670	670,905	0.3
Bituminous and Lignite	22,575	23,227	22,772	220,311	214,544	2.7	1,144,216	1,158,824	-1.3
Anthracite	35	36	32	338	304	11.3	1,585	1,539	3.0
U.S. Total	22,610	23,263	22,805	220,649	214,848	2.7	1,145,801	1,160,363	-1.3
Railroad Cars Loaded	145,939	150,722	145,814	1,447,655	1,403,679	3.1	7,448,008	7,449,555	*

Source: Energy Information Administration



Volume 76 No. 10

OUTPUT FOR WEEK ENDED - Mar 08, 2008

Mar 12, 2008

The net available amount of electric energy distributed by the Total Electric Utility Industry+ for the week ended Saturday, Mar 08, 2008 was 75,181 gigawatthours (GWh), according to the Edison Electric Institute. This is equivalent to 187 on the weekly electric output index.

WEEKLY ELECTRIC OUTPUT BY GEOGRAPHIC DIVISION
(48 CONTIGUOUS STATES)

	Week Ended March 08		52 Weeks Ended March 08	
	GWh Output	% Increase Over Corresponding Week of 2007	GWh Output	% Increase Over Corresponding Period of 2007
New England	2,507	-9.5	133,637	0.7
Mid-Atlantic	8,462	-7.7	456,651	1.8
Central Industrial	14,025	-0.2	722,760	2.6
West Central	6,757	2.0	353,813	2.0
Southeast	19,905	0.7	1,107,662	2.2
South Central	10,613	9.5	597,189	-1.9
Rocky Mountain	4,384	2.4	279,488	6.2
Pacific Northwest	3,407	9.7	162,398	5.7
Pacific Southwest	5,121	-3.9	289,644	-1.1
Total United States	75,181	0.5	4,103,242	1.7

WEEKLY ELECTRIC OUTPUT IN PREVIOUS WEEKS--GWh

Week Ended	2008	Week Ended	2007	% Inc. (08/07)	52 Weeks Ended	2008	% Inc. (08/07)
Feb 16	79,368	Feb 17	82,886	-4.2	Feb 16	4,098,521	1.7
Feb 23	78,367	Feb 24	76,705	2.2	Feb 23	4,100,183	1.7
Mar 01	76,644	Mar 03	73,979	3.6	Mar 01	4,102,848	1.8
Mar 08	75,181	Mar 10	74,786	0.5	Mar 08	4,103,242	1.7
Mar 08	790,586	Mar 10	787,956	0.3	YEAR TO DATE, FIRST 10 WEEKS		

WEEKLY ELECTRIC OUTPUT INDEX--TOTAL U.S.*
SEASONALLY ADJUSTED 1982 = 100

Week Ended	2008	Week Ended	2007	Week Ended	2006
Feb 16	186	Feb 17	194	Feb 18	182
Feb 23	188	Feb 24	185	Feb 25	184
Mar 01	187	Mar 03	179	Mar 04	176
Mar 08	187	Mar 10	184	Mar 11	174

* Excludes Alaska and Hawaii

+ Includes investor-owned companies, cooperatives and government-owned utilities.

Copyright © 2008 Edison Electric Institute. All rights reserved.

WEEKLY ELECTRIC OUTPUT BY GEOGRAPHIC DIVISION (48 CONTIGUOUS STATES)

	Week Ended			NMA CUMULATIVE JANUARY WEEK ONE TO			52 Weeks Ended		
	8-Mar 2008 GWh Output	10-Mar 2007 GWh Output	% Increase Over Corresponding Week of 2007	8-Mar 2008 GWh Output	10-Mar 2007 GWh Output	% Increase Over Corresponding Week of 2007	8-Mar 2008 GWh Output	10-Mar 2007 GWh Output	% Increase Over Corresponding Week of 2007
New England	2,507	2,771	-9.5%	26,176	26,985	-3.0%	133,637	132,767	0.7%
Mid-Atlantic	8,462	9,172	-7.7%	87,554	89,571	-2.3%	456,651	448,609	1.8%
Central Industrial	14,025	14,056	-0.2%	146,563	145,943	0.4%	722,760	704,109	2.6%
West Central	6,757	6,622	2.0%	69,502	67,906	2.4%	353,813	346,772	2.0%
Southeast	19,905	19,762	0.7%	212,456	211,453	0.5%	1,107,662	1,084,312	2.2%
South Central	10,613	9,688	9.5%	107,771	108,716	-0.9%	597,189	609,063	-1.9%
Rocky Mountain	4,384	4,282	2.4%	49,607	47,550	4.3%	279,488	263,169	6.2%
Pacific Northwest	3,407	3,105	9.7%	38,447	35,128	9.4%	162,398	153,657	5.7%
Pacific Southwest	5,121	5,328	-3.9%	52,510	54,703	-4.0%	289,644	292,970	-1.1%
Total United States *	75,181	74,786	0.5%	790,586	787,955	0.3%	4,103,242	4,035,428	1.7%

Notes: EEI output data are an estimate of electricity load made available for distribution derived as weekly net generation + purchases from non-utilities + net imports - exports - sales for resale. It is not meant to be a measure of electricity generation for the U.S. EEI survey data represent the majority of national distribution (large utilities, large government power projects, some independent and large municipal power projects). The remaining segment of the industry (smaller producers) is estimated. Non-utility generation is captured via direct sales to utilities.

Note:

* Excludes Alaska and Hawaii

** Less than one-tenth of one percent

SOURCE: Edison Electric Institute (EEI), *Weekly Electric Output Report*.

AMERICAN IRON AND STEEL INSTITUTE
 1140 Connecticut Avenue, Suite 705
 Washington, D.C. 20036

March 10, 2008

ESTIMATED WEEKLY RAW STEEL* PRODUCTION

<u>Period</u>	<u>Thousand Net Tons</u>	<u>Percent Change from Previous Period</u>	<u>Percent Capability Utilization**</u>	<u>Production by District</u>		
				<u>Week Ending</u>		
				<u>Mar 8</u>	<u>Mar 1</u>	
<u>Week Ending</u>				North East Coast	192	181
				Pgh/Youngstown	223	219
Mar 8, 2008	2,113	-1.8	88.6	Lake Erie	81	83
Mar 8, 2007	2,073	1.9	86.3	Detroit	101	116
Mar 1, 2008	2,153	-0.2	90.3	Indiana/Chicago	497	511
				Midwest	266	272
<u>Year-to-Date+</u>				Southern	663	679
Mar 8, 2008	21,082	5.6	88.4	Western	<u>90</u>	<u>92</u>
Mar 8, 2007	19,962	-	83.0	Total	2113	2153

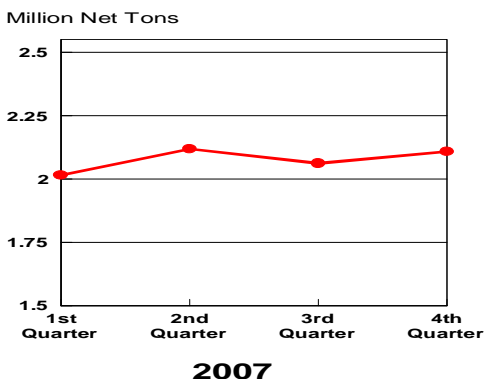
*Raw steel production tonnage included in this report is estimated based on a sampling of steel producers. Therefore, this report should be used primarily to assess production trends. The AISI production report "AIS 7," produced monthly and available by subscription, provides a more accurate summary of steel production based on data supplied by companies representing approximately 75% of U.S. production capacity.

+Includes revisions for previous months

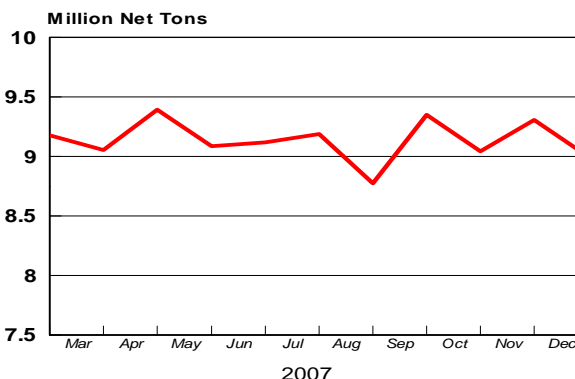
NOTE: Capacity for the Fourth Quarter 2007 is approximately 31.3 million net tons vs 30.7 million net tons for the same period last year, and 30.1 million tons for the third quarter of 2007.

Capacity -	2003 approx.	2.3 million tons/week
	2004	2.2
	2005	2.3
	2006	2.4
	2007	2.4

Average Weekly Raw Steel Production

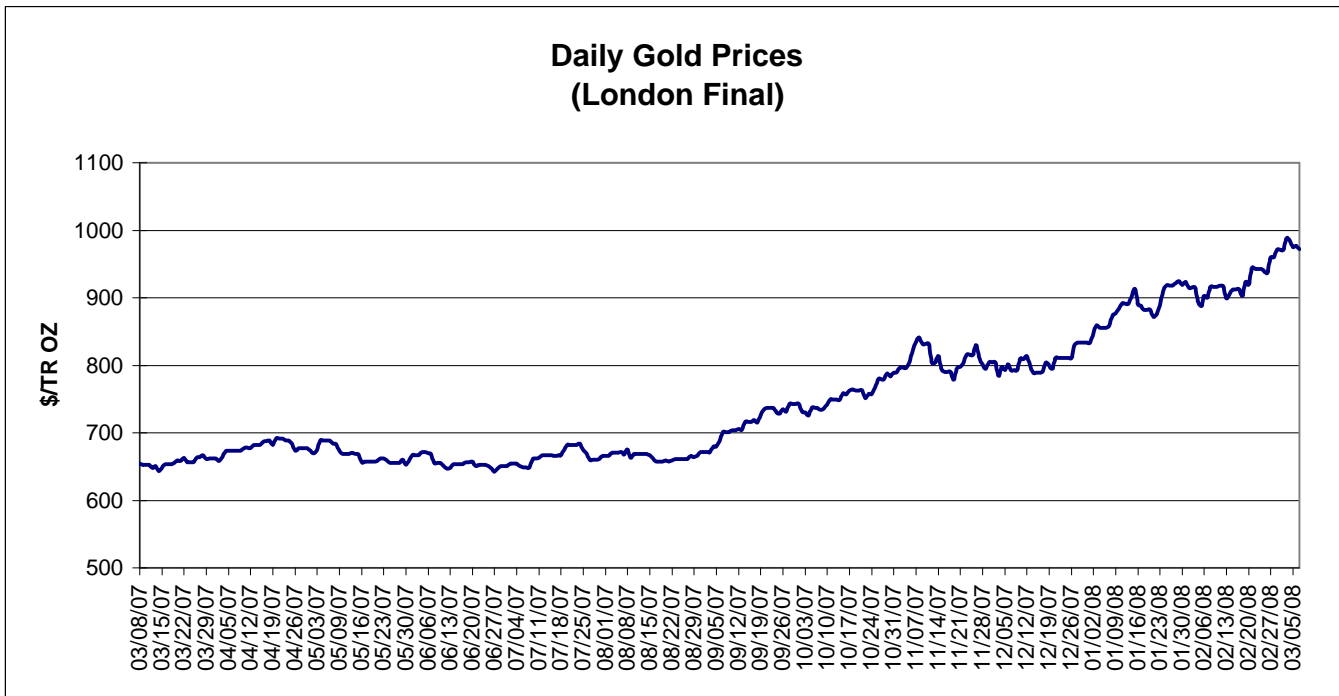
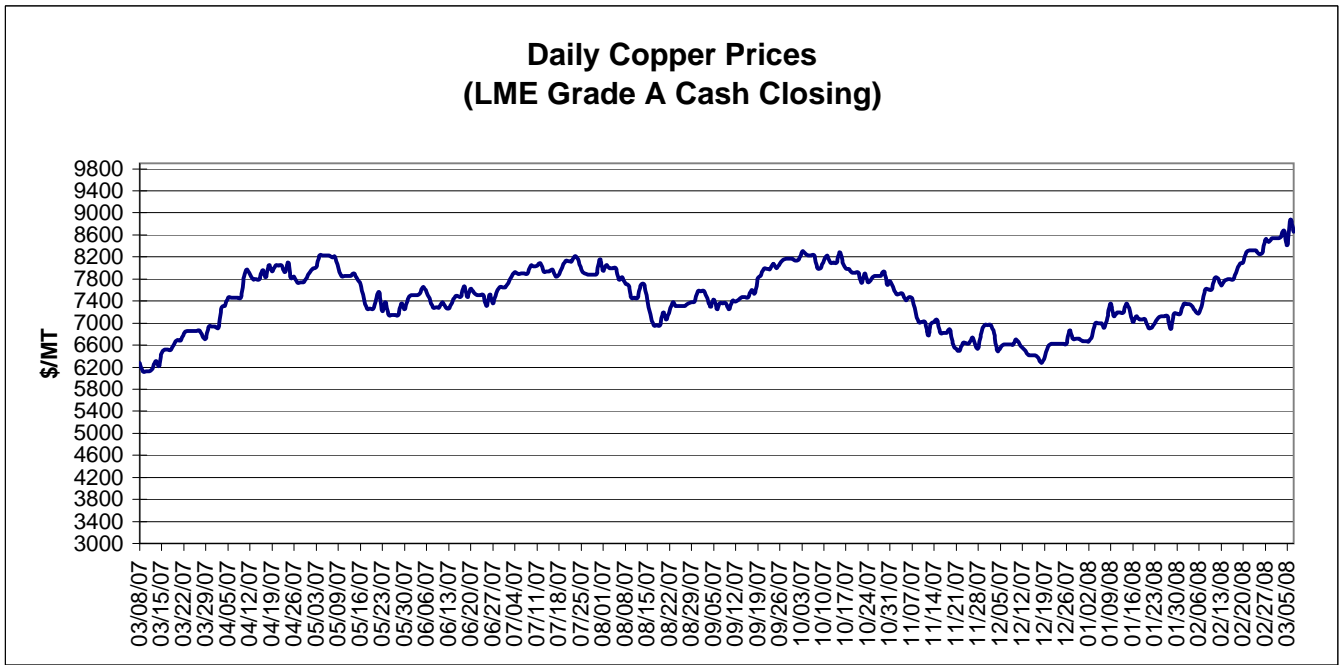


MONTHLY RAW STEEL PRODUCTION



*Steel in the first solid state after melting suitable for further processing or sale, including ingots, steel for castings and strand or pressure cast blooms, slabs, or other product forms.

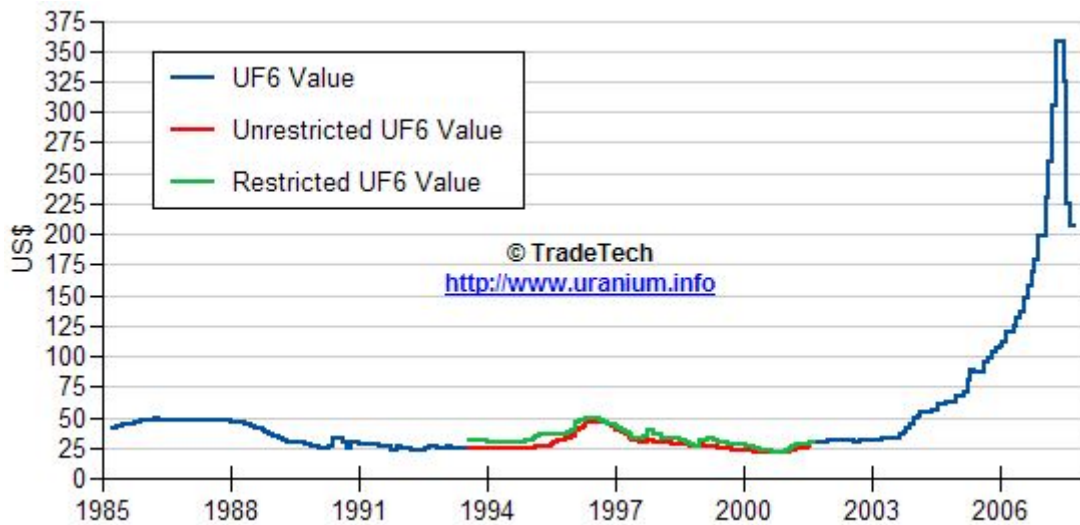
** Based on tonnage capability to produce raw steel for a sustained full order book.



Data reflect closings on weekends and holidays.

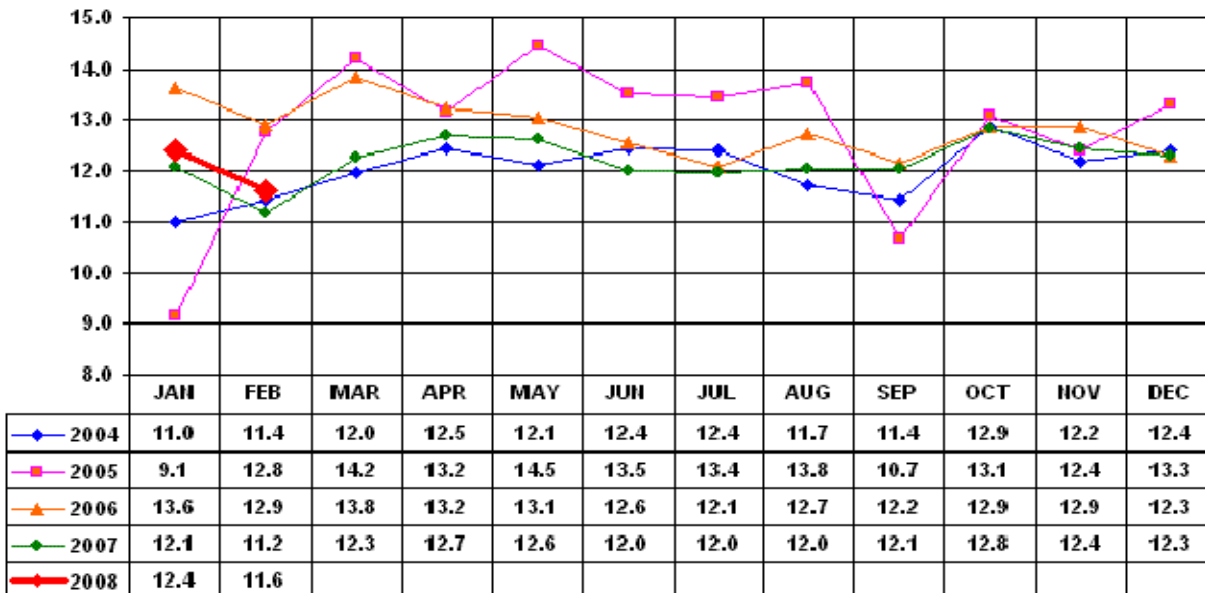
Source: Platts Metals Week

Trade Tech's Uranium (UF6) Monthly Spot Prices (US\$/kg as UF6)



Source: Trade Tech, Uranium Info Website – <http://www.uranium.info>

Coal and Coke Monthly Tonnage Indicator for Internal U.S. Waterways



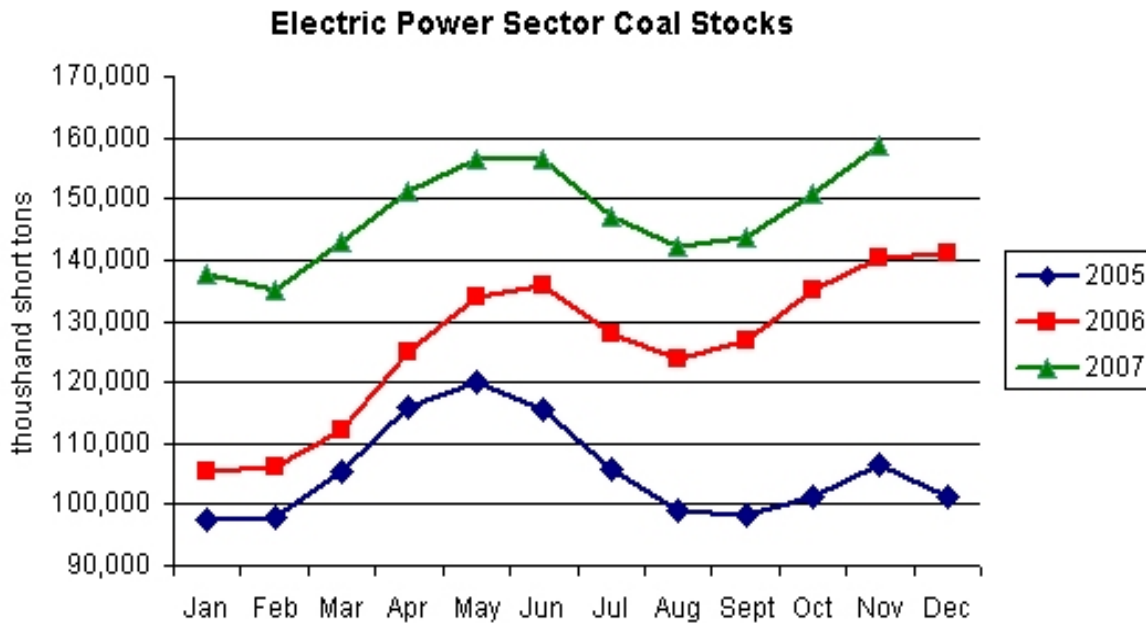
Source: U.S. Army Corps of engineers, Waterborne Commerce Statistics Center

EIA Weekly Spot Coal Prices

The following average spot coal prices appear in the graphic below, for the previous and most recent weeks:

Week Ended	Central Appalachia 12,500 Btu, 1.2 SO2	Northern Appalachia 13,000 Btu, <3.0 SO2	Illinois Basin 11,800 Btu, 5.0 SO2	Powder River Basin 8,800 Btu, 0.8 SO2	Uinta Basin 11,700 Btu, 0.8 SO2
01-Feb-08	\$59.90	\$63.00	\$36.00	\$12.55	\$33.00
08-Feb-08	\$59.90	\$70.00	\$36.00	\$13.10	\$33.00
15-Feb-08	\$66.95	\$70.00	\$46.80	\$13.10	\$33.00
22-Feb-08	\$84.30	\$70.00	\$46.80	\$13.10	\$33.00
29-Feb-08	\$84.30	\$78.00	\$46.80	\$14.05	\$40.00
07-Mar-08	\$84.30	\$80.00	\$46.80	\$14.35	\$40.00

Source: Energy Information Administration (from Platts *Coal Outlook*, "Weekly Price Survey")



Source: Energy Information Administration