

---

National Mining Association

# Weekly Statistical Summary

March 21, 2008 Edition  
(Data for Week Ending March 15, 2008)

Prepared by  
National Mining Association



Suite 500 East, 101 Constitution Avenue, NW  
Washington, DC, 20001  
Phone (202) 463-2600  
Visit us at <http://www.nma.org>

# NMA Weekly Statistical Summary

Vol. 46, No. 11  
Dated 03/21/08

PRODUCTION, CONSUMPTION & TRADE						
	Week Ended			* Cumulative Jan 1 to		
	03/15/08	03/17/07	% Chng	03/15/08	03/15/07	% Chng
<b>EIA Coal Production (000 Tons):</b>						
Week Ended/Year to Date	22,665	22,765	-0.4%	243,314	237,615	2.4%
52 Weeks Ended	1,145,701	1,161,198	-1.3%			
* Due to leap year, 2008 cumulative reflects one extra day of tonnage.						
Month Ended -- February	February 08/07		% Chng	Jan - Feb 08/07		% Chng
	95,567	88,209	8.3%	196,280	187,570	4.6%
MONTH ENDED AND CUMULATIVE NUMBERS ARE PRELIMINARY AND SUBJECT TO CHANGE						
<b>DOC Bituminous Coal Trade (000 Tons)</b>						
Exports:	January 08/07		% Chng	Jan - Jan 08/07		% Chng
Metallurgical	2,673	2,076	28.8%	2,673	2,076	28.8%
Steam	2,222	2,230	-0.4%	2,222	2,230	-0.4%
Imports:	2,381	2,844	-16.3%	2,381	2,844	-16.3%
EII Electric Output (Mil. Kwh)						
	Week Ended			* Cumulative Jan 1 to		
	03/15/08	03/17/07	% Chng	03/15/08	03/17/07	% Chng
EII Electric Output (Mil. Kwh)	72,894	70,517	3.4%	863,480	858,472	0.6%
AISI Raw Steel Output (000 Tons)	2,086	2,073	0.6%	23,168	22,035	5.1%
EIA U.S. PETROLEUM DATA						
4-Week Averages 000 Barrels per Day						
PETROLEUM SUPPLY:	Week Ending			Cumulative Daily Averages		
	03/14/08	03/14/07	% Chng	2008	2007	% Chng
Domestic Crude	5,074	5,162	-1.7	--	--	--
Net Imports (Incl. SPR)	9,827	9,615	2.2	--	--	--
SPR Stocks W/D or Added	-41	0	--	--	--	--
Other Stocks W/D or added	-232	-100	--	--	--	--
Natural Gas Liquids Prod.	2,564	2,318	10.6	--	--	--
Cumulative daily petroleum averages will be shown beginning with week ending April 4, 2008 data.						



**NMA**  
THE AMERICAN RESOURCE

National Mining Association Web Site: [http:// www.nma.org](http://www.nma.org)

### EIA Estimated Weekly U.S. Coal Production Overview (Thousand Short Tons)

Coal-Producing Region and State	Week Ended			Year to Date		Percent Change	52 Weeks Ended		Percent Change
	3/15/2008	3/8/2008	3/17/2007	3/15/2008	3/15/2007		3/15/2008	3/17/2007	
Alabama	393	391	413	4,191	4,321	-3.0	19,302	18,792	2.7
Alaska	25	25	36	263	378	-30.4	1,202	1,530	-21.4
Arizona	122	122	162	1,322	1,697	-22.1	7,576	8,205	-7.7
Arkansas	2	2	1	22	14	56.4	90	34	164.6
Colorado	713	709	639	7,598	6,591	15.3	37,223	37,224	*
Illinois	685	682	769	7,288	8,005	-9.0	31,645	34,010	-7.0
Indiana	720	716	695	7,698	7,254	6.1	35,295	35,119	0.5
Kansas	10	10	8	105	89	18.0	435	466	-6.7
<b>Kentucky Total</b>	<b>2,310</b>	<b>2,298</b>	<b>2,381</b>	<b>24,676</b>	<b>24,867</b>	<b>-0.8</b>	<b>114,519</b>	<b>119,516</b>	<b>-4.2</b>
Eastern	1,686	1,678	1,781	18,031	18,618	-3.2	86,014	91,983	-6.5
Western	623	620	600	6,645	6,249	6.3	28,505	27,533	3.5
Louisiana	69	71	16	925	667	38.6	3,315	4,010	-17.3
Maryland	41	41	48	441	498	-11.6	2,227	4,362	-48.9
Mississippi	34	51	62	586	715	-18.1	3,400	3,788	-10.2
Missouri	4	4	5	47	49	-4.5	233	315	-26.1
Montana	843	839	805	9,004	8,294	8.6	43,881	42,317	3.7
New Mexico	463	461	438	4,960	4,576	8.4	24,742	25,645	-3.5
North Dakota	583	580	616	6,251	6,455	-3.2	29,279	30,384	-3.6
Ohio	470	468	448	5,026	4,667	7.7	22,818	22,264	2.5
Oklahoma	38	37	33	402	346	16.0	1,697	1,872	-9.4
<b>Pennsylvania Total</b>	<b>1,309</b>	<b>1,302</b>	<b>1,395</b>	<b>13,963</b>	<b>14,586</b>	<b>-4.3</b>	<b>64,277</b>	<b>66,784</b>	<b>-3.8</b>
Anthracite	35	35	32	373	336	11.1	1,588	1,540	3.1
Bituminous	1,274	1,267	1,363	13,590	14,250	-4.6	62,689	65,245	-3.9
Tennessee	48	48	57	515	593	-13.2	2,555	2,769	-7.7
Texas	821	816	792	8,762	8,149	7.5	42,341	44,787	-5.5
Utah	452	449	486	4,818	5,072	-5.0	23,949	25,383	-5.7
Virginia	510	507	580	5,434	6,049	-10.2	24,639	29,378	-16.1
Washington	--	--	--	--	--	--	0	1,930	-100.0
<b>West Virginia Total</b>	<b>3,063</b>	<b>3,047</b>	<b>3,189</b>	<b>32,688</b>	<b>33,252</b>	<b>-1.7</b>	<b>152,001</b>	<b>152,845</b>	<b>-0.6</b>
Northern	968	963	937	10,278	9,778	5.1	42,259	42,699	-1.0
Southern	2,095	2,084	2,251	22,410	23,474	-4.5	109,742	110,147	-0.4
Wyoming	8,939	8,934	8,692	96,330	90,430	6.5	457,060	447,467	2.1
<b>Appalachian Total</b>	<b>7,520</b>	<b>7,482</b>	<b>7,909</b>	<b>80,288</b>	<b>82,585</b>	<b>-2.8</b>	<b>373,833</b>	<b>389,178</b>	<b>-3.9</b>
<b>Interior Total</b>	<b>3,005</b>	<b>3,010</b>	<b>2,982</b>	<b>32,479</b>	<b>31,537</b>	<b>3.0</b>	<b>146,956</b>	<b>151,935</b>	<b>-3.3</b>
<b>Western Total</b>	<b>12,140</b>	<b>12,119</b>	<b>11,873</b>	<b>130,547</b>	<b>123,492</b>	<b>5.7</b>	<b>624,912</b>	<b>620,085</b>	<b>0.8</b>
<b>East of Miss. River</b>	<b>9,582</b>	<b>9,551</b>	<b>10,036</b>	<b>102,506</b>	<b>104,809</b>	<b>-2.2</b>	<b>472,678</b>	<b>489,627</b>	<b>-3.5</b>
<b>West of Miss. River</b>	<b>13,083</b>	<b>13,060</b>	<b>12,729</b>	<b>140,808</b>	<b>132,806</b>	<b>6.0</b>	<b>673,024</b>	<b>671,570</b>	<b>0.2</b>
Bituminous and Lignite	22,630	22,575	22,732	242,941	237,279	2.4	1,144,114	1,159,658	-1.3
Anthracite	35	35	32	373	336	11.1	1,588	1,540	3.1
<b>U.S. Total</b>	<b>22,665</b>	<b>22,610</b>	<b>22,765</b>	<b>243,314</b>	<b>237,615</b>	<b>2.4</b>	<b>1,145,701</b>	<b>1,161,198</b>	<b>-1.3</b>
Railroad Cars Loaded	146,875	145,939	147,456	1,594,530	1,551,135	2.8	7,447,427	7,459,837	-0.2

Source: Energy Information Administration



Volume 76 No. 11

**OUTPUT FOR WEEK ENDED - Mar 15, 2008**

Mar 19, 2008

The net available amount of electric energy distributed by the Total Electric Utility Industry+ for the week ended Saturday, Mar 15, 2008 was 72,894 gigawatthours (GWh), according to the Edison Electric Institute. This is equivalent to 182 on the weekly electric output index.

**WEEKLY ELECTRIC OUTPUT BY GEOGRAPHIC DIVISION**  
(48 CONTIGUOUS STATES)

	Week Ended March 15		52 Weeks Ended March 15	
	GWh Output	% Increase Over Corresponding Week of 2007	GWh Output	% Increase Over Corresponding Period of 2007
New England	2,496	1.5	133,674	0.7
Mid-Atlantic	8,265	0.6	456,703	1.8
Central Industrial	13,609	5.5	723,473	2.7
West Central	6,454	4.7	354,103	2.2
Southeast	19,281	3.4	1,108,302	2.2
South Central	10,087	4.6	597,633	-1.9
Rocky Mountain	4,289	-1.7	279,415	6.2
Pacific Northwest	3,273	10.5	162,707	6.1
Pacific Southwest	5,140	-0.7	289,610	-1.1
Total United States	72,894	3.4	4,105,620	1.7

**WEEKLY ELECTRIC OUTPUT IN PREVIOUS WEEKS--GWh**

Week Ended	2008	Week Ended	2007	% Inc. (08/07)	52 Weeks Ended	2008	% Inc. (08/07)
Feb 23	78,367	Feb 24	76,705	2.2	Feb 23	4,100,183	1.7
Mar 01	76,644	Mar 03	73,979	3.6	Mar 01	4,102,848	1.8
Mar 08	75,181	Mar 10	74,786	0.5	Mar 08	4,103,243	1.7
Mar 15	72,894	Mar 17	70,517	3.4	Mar 15	4,105,620	1.7
Mar 15	863,480	Mar 17	858,472	0.6	YEAR TO DATE, FIRST 11 WEEKS		

**WEEKLY ELECTRIC OUTPUT INDEX--TOTAL U.S.\***  
**SEASONALLY ADJUSTED 1982 = 100**

Week Ended	2008	Week Ended	2007	Week Ended	2006
Feb 23	188	Feb 24	185	Feb 25	184
Mar 01	187	Mar 03	179	Mar 04	176
Mar 08	187	Mar 10	184	Mar 11	174
Mar 15	182	Mar 17	175	Mar 18	174

\* Excludes Alaska and Hawaii.

+ Includes investor-owned companies, cooperatives and government-owned utilities.

Copyright © 2008 Edison Electric Institute. All rights reserved.

## WEEKLY ELECTRIC OUTPUT BY GEOGRAPHIC DIVISION (48 CONTIGUOUS STATES)

	Week Ended			NMA CUMULATIVE JANUARY WEEK ONE TO			52 Weeks Ended		
	15-Mar 2008 GWh Output	17-Mar 2007 GWh Output	% Increase Over Corresponding Week of 2007	15-Mar 2008 GWh Output	17-Mar 2007 GWh Output	% Increase Over Corresponding Week of 2007	15-Mar 2008 GWh Output	17-Mar 2007 GWh Output	% Increase Over Corresponding Week of 2007
<b>New England</b>	2,496	2,459	1.5%	<b>28,672</b>	<b>29,444</b>	<b>-2.6%</b>	133,674	132,773	0.7%
<b>Mid-Atlantic</b>	8,265	8,213	0.6%	<b>95,819</b>	<b>97,784</b>	<b>-2.0%</b>	456,703	448,833	1.8%
<b>Central Industrial</b>	13,609	12,896	5.5%	<b>160,172</b>	<b>158,839</b>	<b>0.8%</b>	723,473	704,266	2.7%
<b>West Central</b>	6,454	6,164	4.7%	<b>75,956</b>	<b>74,070</b>	<b>2.5%</b>	354,103	346,647	2.2%
<b>Southeast</b>	19,281	18,642	3.4%	<b>231,737</b>	<b>230,095</b>	<b>0.7%</b>	1,108,302	1,084,418	2.2%
<b>South Central</b>	10,087	9,643	4.6%	<b>117,858</b>	<b>118,359</b>	<b>-0.4%</b>	597,633	609,294	-1.9%
<b>Rocky Mountain</b>	4,289	4,362	-1.7%	<b>53,896</b>	<b>51,912</b>	<b>3.8%</b>	279,415	263,154	6.2%
<b>Pacific Northwest</b>	3,273	2,963	10.5%	<b>41,720</b>	<b>38,091</b>	<b>9.5%</b>	162,707	153,392	6.1%
<b>Pacific Southwest</b>	5,140	5,175	-0.7%	<b>57,650</b>	<b>59,878</b>	<b>-3.7%</b>	289,610	292,828	-1.1%
<b>Total United States *</b>	72,894	70,517	3.4%	<b>863,480</b>	<b>858,472</b>	<b>0.6%</b>	4,105,620	4,035,605	1.7%

**Notes:** EEI output data are an estimate of electricity load made available for distribution derived as weekly net generation + purchases from non-utilities + net imports - exports - sales for resale. It is not meant to be a measure of electricity generation for the U.S. EEI survey data represent the majority of national distribution (large utilities, large government power projects, some independent and large municipal power projects). The remaining segment of the industry (smaller producers) is estimated. Non-utility generation is captured via direct sales to utilities.

**Note:**

\* Excludes Alaska and Hawaii

\*\* Less than one-tenth of one percent

SOURCE: Edison Electric Institute (EEI), *Weekly Electric Output Report*.

AMERICAN IRON AND STEEL INSTITUTE  
 1140 Connecticut Avenue, Suite 705  
 Washington, D.C. 20036

March 17, 2008

**ESTIMATED WEEKLY RAW STEEL\* PRODUCTION**

<u>Period</u>	<u>Thousand Net Tons</u>	<u>Percent Change from Previous Period</u>	<u>Percent Capability Utilization**</u>	<u>Production by District</u>		
				<u>Week Ending</u>		
				<u>Mar 15</u>	<u>Mar 8</u>	
<b><u>Week Ending</u></b>				North East Coast	196	192
				Pgh/Youngstown	219	223
				Lake Erie	82	81
Mar 15, 2008	2,086	-1.2	87.5	Detroit	110	101
Mar 15, 2007	2,073	0.6	86.3	Indiana/Chicago	478	497
Mar 8, 2008	2,113	-1.8	88.6	Midwest	262	266
				Southern	648	663
<b><u>Year-to-Date+</u></b>				Western	91	90
Mar 15, 2008	23,168	5.1	88.3	Total	2086	2113
Mar 15, 2007	22,035	-	83.0			

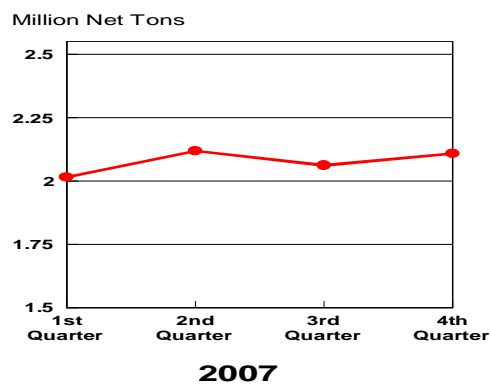
\*Raw steel production tonnage included in this report is estimated based on a sampling of steel producers. Therefore, this report should be used primarily to assess production trends. The AISI production report "AIS 7," produced monthly and available by subscription, provides a more accurate summary of steel production based on data supplied by companies representing approximately 75% of U.S. production capacity.

+Includes revisions for previous months

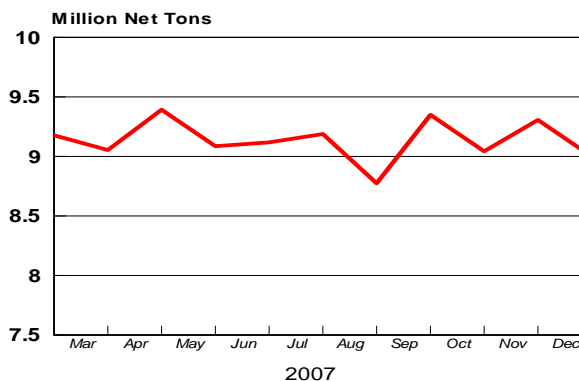
NOTE: Capacity for the Fourth Quarter 2007 is approximately 31.3 million net tons vs 30.7 million net tons for the same period last year, and 30.1 million tons for the third quarter of 2007.

Capacity -	2003 approx.	2.3 million tons/week
	2004	2.2
	2005	2.3
	2006	2.4
	2007	2.4

**Average Weekly Raw Steel Production**

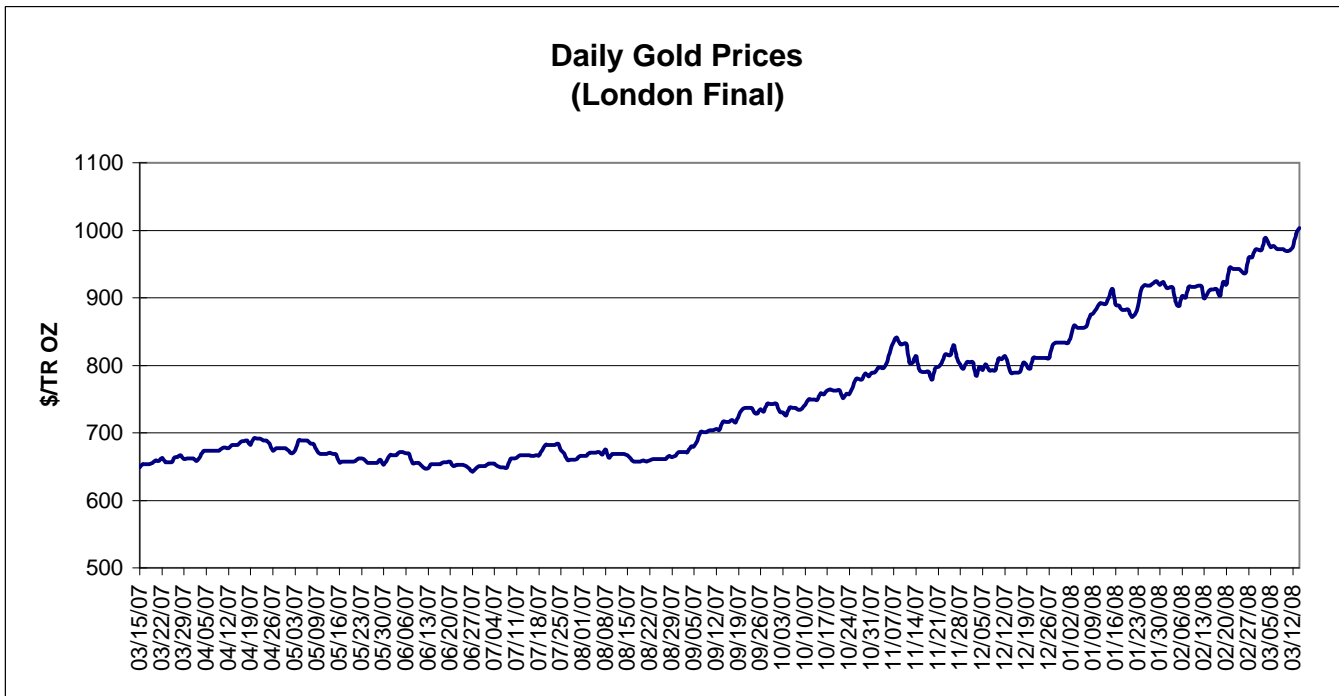
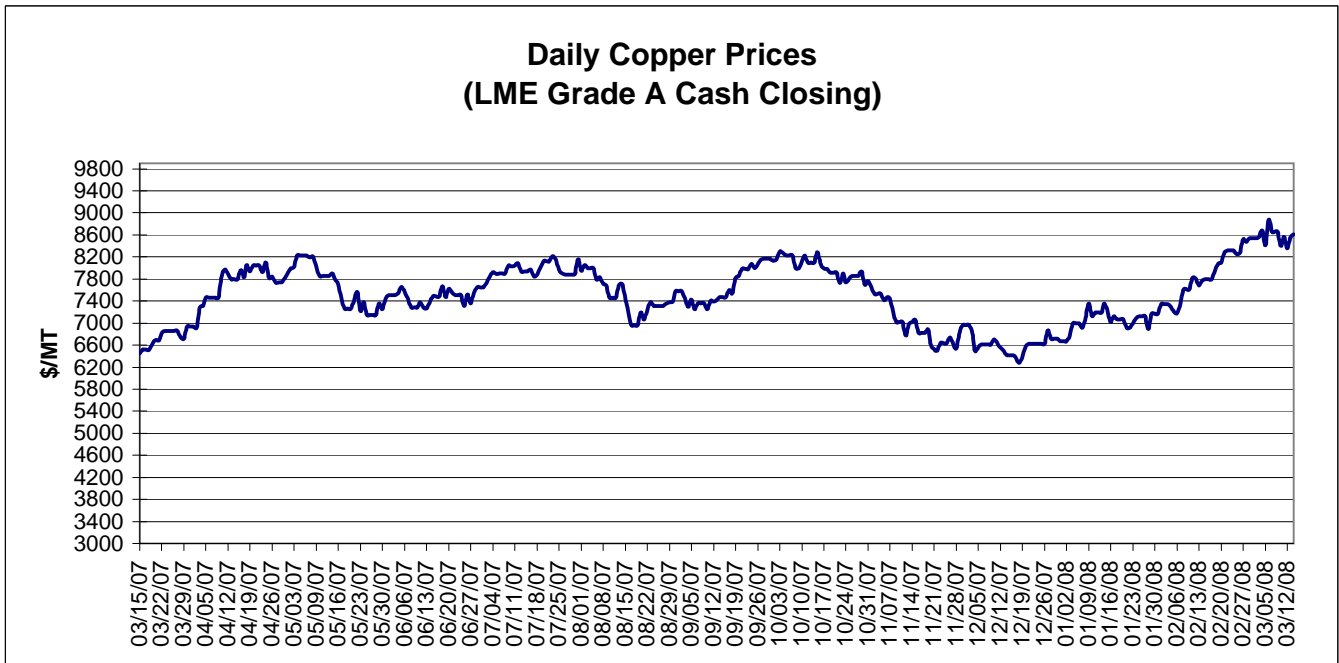


**MONTHLY RAW STEEL PRODUCTION**



\*Steel in the first solid state after melting suitable for further processing or sale, including ingots, steel for castings and strand or pressure cast blooms, slabs, or other product forms.

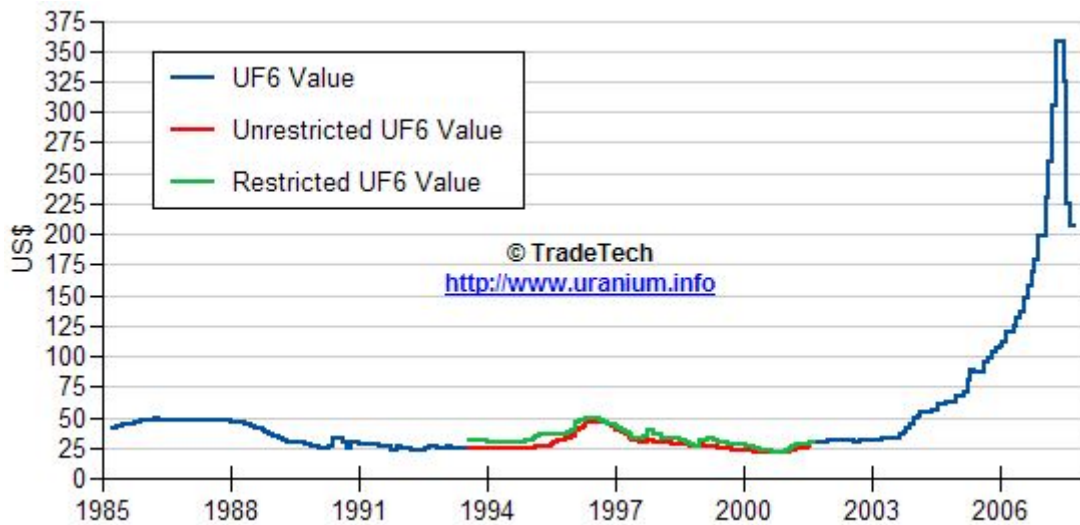
\*\* Based on tonnage capability to produce raw steel for a sustained full order book.



Data reflect closings on weekends and holidays.

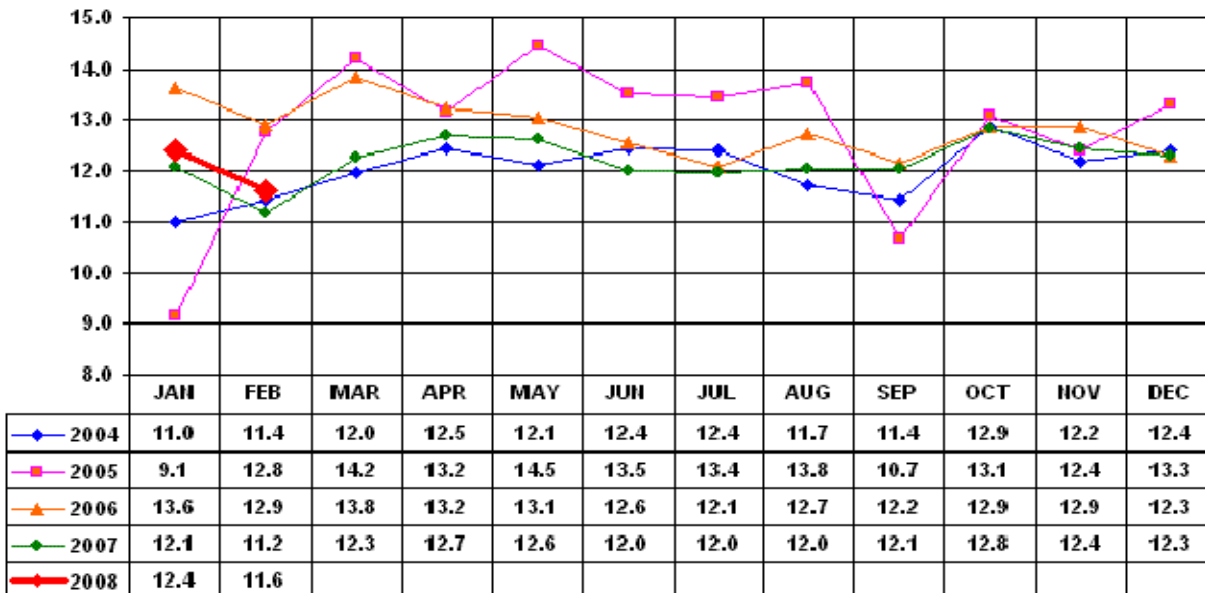
Source: Platts Metals Week

### Trade Tech's Uranium (UF6) Monthly Spot Prices (US\$/kg as UF6)



Source: Trade Tech, Uranium Info Website – <http://www.uranium.info>

### Coal and Coke Monthly Tonnage Indicator for Internal U.S. Waterways



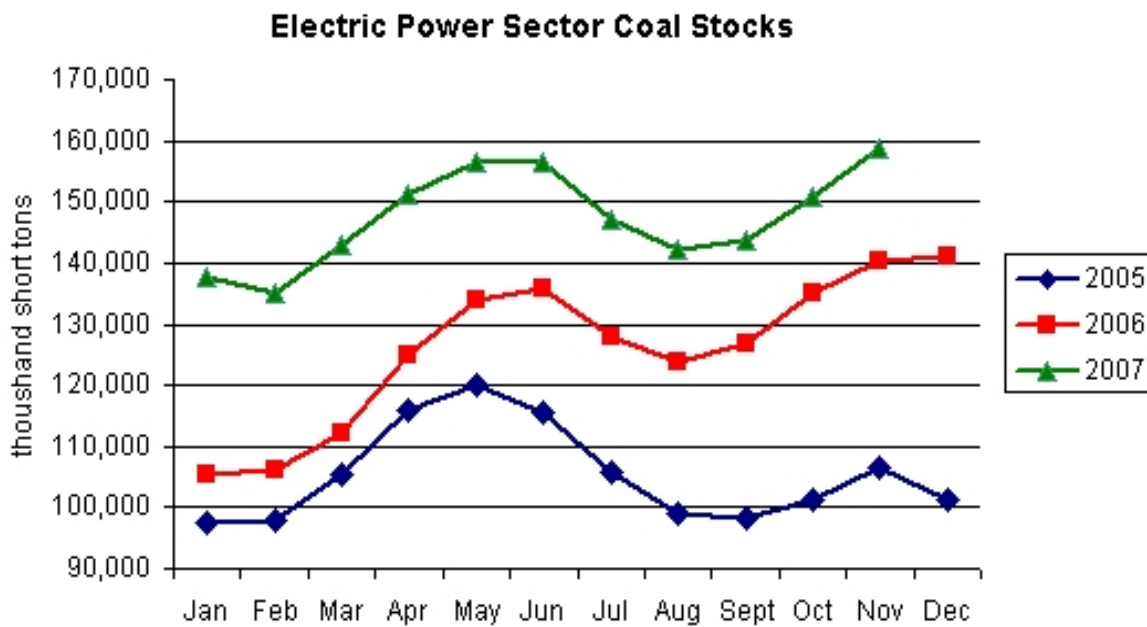
Source: U.S. Army Corps of engineers, Waterborne Commerce Statistics Center

### EIA Weekly Spot Coal Prices

The following average spot coal prices appear in the graphic below, for the previous and most recent weeks: (Dollars per Short Ton)

Week Ended	Central Appalachia 12,500 Btu, 1.2 SO2	Northern Appalachia 13,000 Btu, <3.0 SO2	Illinois Basin 11,800 Btu, 5.0 SO2	Powder River Basin 8,800 Btu, 0.8 SO2	Uinta Basin 11,700 Btu, 0.8 SO2
08-Feb-08	\$59.90	\$70.00	\$36.00	\$13.10	\$33.00
15-Feb-08	\$66.95	\$70.00	\$46.80	\$13.10	\$33.00
22-Feb-08	\$84.30	\$70.00	\$46.80	\$13.10	\$33.00
29-Feb-08	\$84.30	\$78.00	\$46.80	\$14.05	\$40.00
07-Mar-08	\$84.30	\$80.00	\$46.80	\$14.35	\$40.00
14-Mar-08	\$84.30	\$80.00	\$52.00	\$14.05	\$40.00

Source: Energy Information Administration (from Platts *Coal Outlook*, "Weekly Price Survey")



Source: Energy Information Administration