
National Mining Association

Weekly Statistical Summary

March 28, 2008 Edition
(Data for Week Ending March 22, 2008)

Prepared by
National Mining Association



Suite 500 East, 101 Constitution Avenue, NW
Washington, DC, 20001
Phone (202) 463-2600
Visit us at <http://www.nma.org>

NMA Weekly Statistical Summary

Vol. 46, No. 12
Dated 03/28/08

PRODUCTION, CONSUMPTION & TRADE						
	Week Ended			* Cumulative Jan 1 to		
	03/22/08	03/24/07	% Chng	03/22/08	03/22/08	% Chng
EIA Coal Production (000 Tons):						
Week Ended/Year to Date	23,207	23,050	0.7%	266,522	260,601	2.3%
52 Weeks Ended	1,145,858	1,161,514	-1.3%			
* Due to leap year, 2008 cumulative reflects one extra day of tonnage.						
Month Ended -- February	February 08/07		% Chng	Jan - Feb 08/07		% Chng
	95,567	88,209	8.3%	196,280	187,570	4.6%
MONTH ENDED AND CUMULATIVE NUMBERS ARE PRELIMINARY AND SUBJECT TO CHANGE						
DOC Bituminous Coal Trade (000 Tons)						
Exports:	January 08/07		% Chng	Jan - Jan 08/07		% Chng
Metallurgical	2,673	2,076	28.8%	2,673	2,076	28.8%
Steam	2,222	2,230	-0.4%	2,222	2,230	-0.4%
Imports:	2,381	2,844	-16.3%	2,381	2,844	-16.3%
EII Electric Output (Mil. Kwh)						
	Week Ended			* Cumulative Jan 1 to		
	03/22/08	03/24/07	% Chng	03/22/08	03/24/07	% Chng
EII Electric Output (Mil. Kwh)	71,691	70,855	1.2%	935,171	929,327	0.6%
AISI Raw Steel Output (000 Tons)	2,118	2,073	2.2%	24,707	23,515	5.1%
EIA U.S. PETROLEUM DATA						
4-Week Averages						
000 Barrels per Day						
PETROLEUM SUPPLY:	Week Ending			Cumulative Daily Averages		
	03/21/08	03/21/07	% Chng	2008	2007	% Chng
Domestic Crude	5,088	5,169	-1.6	--	--	--
Net Imports (Incl. SPR)	9,562	9,933	-3.7	--	--	--
SPR Stocks W/D or Added	-33	0	--	--	--	--
Other Stocks W/D or added	-119	-261	--	--	--	--
Natural Gas Liquids Prod.	2,518	2,371	6.2	--	--	--
Cumulative daily petroleum averages will be shown beginning with week ending April 4, 2008 data.						



NMA

THE AMERICAN RESOURCE

National Mining Association Web Site: [http:// www.nma.org](http://www.nma.org)

EIA Estimated Weekly U.S. Coal Production Overview (Thousand Short Tons)

Coal-Producing Region and State	Week Ended			Year to Date			52 Weeks Ended		
	3/22/2008	3/15/2008	3/24/2007	3/22/2008	3/22/2007	Percent Change	3/22/2008	3/24/2007	Percent Change
Alabama	399	393	421	4,590	4,740	-3.2	19,280	18,773	2.7
Alaska	25	25	37	288	415	-30.4	1,190	1,540	-22.7
Arizona	124	122	165	1,446	1,861	-22.3	7,535	8,201	-8.1
Arkansas	2	2	1	24	15	56.1	91	35	158.6
Colorado	724	713	652	8,323	7,239	15.0	37,296	37,321	-0.1
Illinois	696	685	784	7,984	8,786	-9.1	31,557	34,139	-7.6
Indiana	732	720	710	8,430	7,961	5.9	35,317	35,126	0.5
Kansas	10	10	9	115	97	17.8	436	470	-7.2
Kentucky Total	2,347	2,310	2,430	27,023	27,287	-1.0	114,436	119,384	-4.1
Eastern	1,714	1,686	1,818	19,744	20,428	-3.3	85,911	91,822	-6.4
Western	634	623	613	7,279	6,859	6.1	28,526	27,562	3.5
Louisiana	117	69	16	1,042	683	52.4	3,416	3,958	-13.7
Maryland	42	41	49	483	547	-11.7	2,221	4,296	-48.3
Mississippi	82	34	44	668	764	-12.6	3,437	3,750	-8.3
Missouri	4	4	5	51	54	-4.7	233	308	-24.4
Montana	857	843	822	9,861	9,111	8.2	43,916	42,382	3.6
New Mexico	471	463	447	5,431	5,021	8.2	24,766	25,623	-3.3
North Dakota	593	583	629	6,844	7,081	-3.4	29,243	30,385	-3.8
Ohio	478	470	457	5,504	5,122	7.5	22,839	22,224	2.8
Oklahoma	38	38	34	440	380	15.8	1,701	1,860	-8.6
Pennsylvania Total	1,330	1,309	1,424	15,293	16,003	-4.4	64,183	66,854	-4.0
Anthracite	36	35	33	409	369	10.9	1,591	1,540	3.3
Bituminous	1,294	1,274	1,391	14,884	15,635	-4.8	62,592	65,313	-4.2
Tennessee	49	48	58	564	651	-13.3	2,546	2,766	-7.9
Texas	834	821	808	9,595	8,952	7.2	42,367	44,723	-5.3
Utah	459	452	496	5,277	5,566	-5.2	23,912	25,327	-5.6
Virginia	518	510	592	5,952	6,639	-10.4	24,565	29,338	-16.3
Washington	--	--	--	--	--	--	0	1,868	-100.0
West Virginia Total	3,112	3,063	3,254	35,800	36,492	-1.9	151,859	152,918	-0.7
Northern	984	968	957	11,261	10,730	5.0	42,286	42,735	-1.0
Southern	2,129	2,095	2,298	24,539	25,762	-4.7	109,573	110,183	-0.6
Wyoming	9,164	8,939	8,707	105,494	99,133	6.4	457,517	447,946	2.1
Appalachian Total	7,642	7,520	8,073	87,930	90,623	-3.0	373,402	388,990	-4.0
Interior Total	3,149	3,005	3,024	35,627	34,552	3.1	147,081	151,931	-3.2
Western Total	12,417	12,140	11,954	142,964	135,427	5.6	625,375	620,594	0.8
East of Miss. River	9,785	9,582	10,223	112,291	114,992	-2.3	472,239	489,566	-3.5
West of Miss. River	13,422	13,083	12,827	154,231	145,609	5.9	673,619	671,948	0.2
Bituminous and Lignite	23,172	22,630	23,018	266,113	260,233	2.3	1,144,268	1,159,974	-1.4
Anthracite	36	35	33	409	369	10.9	1,591	1,540	3.3
U.S. Total	23,207	22,665	23,050	266,522	260,601	2.3	1,145,858	1,161,514	-1.3
Railroad Cars Loaded	151,937	146,875	149,634	1,746,467	1,700,769	2.7	7,449,730	7,459,856	-0.1

Source: Energy Information Administration



WEEKLY ELECTRIC OUTPUT

Essential Energy Information from E.E.I.'s Statistics Department

Volume 76 No. 12

OUTPUT FOR WEEK ENDED - Mar 22, 2008

Mar 26, 2008

The net available amount of electric energy distributed by the Total Electric Utility Industry+ for the week ended Saturday, Mar 22, 2008 was 71,691 gigawatthours (GWh), according to the Edison Electric Institute. This is equivalent to 182 on the weekly electric output index.

WEEKLY ELECTRIC OUTPUT BY GEOGRAPHIC DIVISION

(48 CONTIGUOUS STATES)

	Week Ended March 22		52 Weeks Ended March 22	
	GWh Output	% Increase Over Corresponding Week of 2007	GWh Output	% Increase Over Corresponding Period of 2007
New England	2,486	0.1	133,677	0.7
Mid-Atlantic	8,083	-2.7	456,482	1.7
Central Industrial	13,072	1.9	723,721	2.8
West Central	6,279	2.8	354,271	2.3
Southeast	19,037	1.0	1,108,488	2.3
South Central	9,867	2.3	597,851	-1.9
Rocky Mountain	4,495	2.3	279,519	6.2
Pacific Northwest	3,354	14.9	163,143	6.4
Pacific Southwest	5,018	-5.8	289,304	-1.2
Total United States	71,691	1.2	4,106,456	1.8

WEEKLY ELECTRIC OUTPUT IN PREVIOUS WEEKS--GWh

Week Ended	2008	Week Ended	2007	% Inc. (08/07)	52 Weeks Ended	2008	% Inc. (08/07)
Mar 01	76,644	Mar 03	73,979	3.6	Mar 01	4,102,848	1.8
Mar 08	75,181	Mar 10	74,786	0.5	Mar 08	4,103,243	1.7
Mar 15	72,894	Mar 17	70,517	3.4	Mar 15	4,105,620	1.7
Mar 22	71,691	Mar 24	70,855	1.2	Mar 22	4,106,456	1.8
Mar 22	935,171	Mar 24	929,327	0.6	YEAR TO DATE, FIRST 12 WEEKS		

WEEKLY ELECTRIC OUTPUT INDEX--TOTAL U.S.*

SEASONALLY ADJUSTED 1982 = 100

Week Ended	2008	Week Ended	2007	Week Ended	2006
Mar 01	187	Mar 03	179	Mar 04	176
Mar 08	187	Mar 10	184	Mar 11	174
Mar 15	182	Mar 17	175	Mar 18	174
Mar 22	182	Mar 24	180	Mar 25	183

* Excludes Alaska and Hawaii.

+ Includes investor-owned companies, cooperatives and government-owned utilities.

Copyright © 2008 Edison Electric Institute. All rights reserved.

WEEKLY ELECTRIC OUTPUT BY GEOGRAPHIC DIVISION (48 CONTIGUOUS STATES)

	Week Ended			NMA CUMULATIVE JANUARY WEEK ONE TO			52 Weeks Ended		
	22-Mar 2008 GWh Output	24-Mar 2007 GWh Output	% Increase Over Corresponding Week of 2007	22-Mar 2008 GWh Output	24-Mar 2007 GWh Output	% Increase Over Corresponding Week of 2007	22-Mar 2008 GWh Output	24-Mar 2007 GWh Output	% Increase Over Corresponding Week of 2007
New England	2,486	2,483	0.1%	31,158	31,927	-2.4%	133,677	132,769	0.7%
Mid-Atlantic	8,083	8,304	-2.7%	103,902	106,088	-2.1%	456,482	448,812	1.7%
Central Industrial	13,072	12,824	1.9%	173,244	171,663	0.9%	723,721	703,948	2.8%
West Central	6,279	6,111	2.7%	82,235	80,181	2.6%	354,271	346,425	2.3%
Southeast	19,037	18,851	1.0%	250,774	248,946	0.7%	1,108,488	1,083,298	2.3%
South Central	9,867	9,648	2.3%	127,725	128,007	-0.2%	597,851	609,235	-1.9%
Rocky Mountain	4,495	4,392	2.3%	58,391	56,304	3.7%	279,519	263,190	6.2%
Pacific Northwest	3,354	2,918	14.9%	45,074	41,009	9.9%	163,143	153,393	6.4%
Pacific Southwest	5,018	5,324	-5.7%	62,668	65,202	-3.9%	289,304	292,944	-1.2%
Total United States *	71,691	70,855	1.2%	935,171	929,327	0.6%	4,106,456	4,034,014	1.8%

Notes: EEI output data are an estimate of electricity load made available for distribution derived as weekly net generation + purchases from non-utilities + net imports - exports - sales for resale. It is not meant to be a measure of electricity generation for the U.S. EEI survey data represent the majority of national distribution (large utilities, large government power projects, some independent and large municipal power projects). The remaining segment of the industry (smaller producers) is estimated. Non-utility generation is captured via direct sales to utilities.

* Excludes Alaska and Hawaii

** Less than one-tenth of one percent

SOURCE: Edison Electric Institute (EEI), *Weekly Electric Output Report*.

AMERICAN IRON AND STEEL INSTITUTE
 1140 Connecticut Avenue, Suite 705
 Washington, D.C. 20036

March 24, 2008

ESTIMATED WEEKLY RAW STEEL* PRODUCTION

<u>Period</u>	<u>Thousand Net Tons</u>	<u>Percent Change from Previous Period</u>	<u>Percent Capability Utilization**</u>	<u>Production by District</u>		
				<u>Week Ending</u>		
				<u>Mar 22</u>	<u>Mar 15</u>	
<u>Week Ending</u>				North East Coast	184	196
				Pgh/Youngstown	218	219
Mar 22, 2008	2,118	1.5	88.8	Lake Erie	83	82
Mar 22, 2007	2,073	2.1	86.3	Detroit	115	110
Mar 15, 2008	2,086	-1.2	87.5	Indiana/Chicago	506	478
				Midwest	271	262
<u>Year-to-Date+</u>				Southern	652	648
Mar 22, 2008	24,707	5.0	88.4	Western	89	91
Mar 22, 2007	23,515	-	83.0	Total	2118	2086

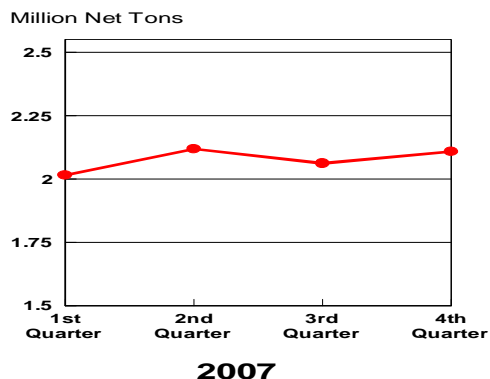
*Raw steel production tonnage included in this report is estimated based on a sampling of steel producers. Therefore, this report should be used primarily to assess production trends. The AISI production report "AIS 7," produced monthly and available by subscription, provides a more accurate summary of steel production based on data supplied by companies representing approximately 75% of U.S. production capacity.

+Includes revisions for previous months

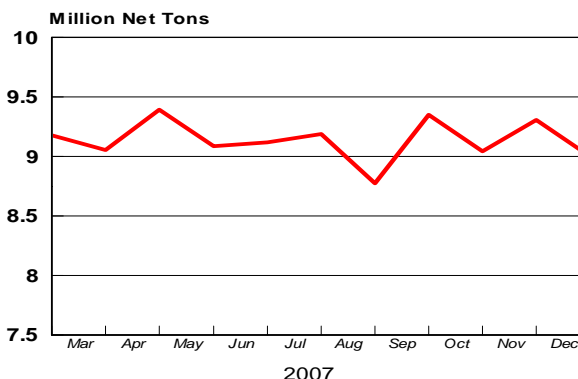
NOTE: Capability for the Fourth Quarter 2007 is approximately 31.3 million net tons vs 30.7 million net tons for the same period last year, and 30.1 million tons for the third quarter of 2007.

Capability -	2003 approx.	2.3 million tons/week
	2004	2.2
	2005	2.3
	2006	2.4
	2007	2.4

Average Weekly Raw Steel Production

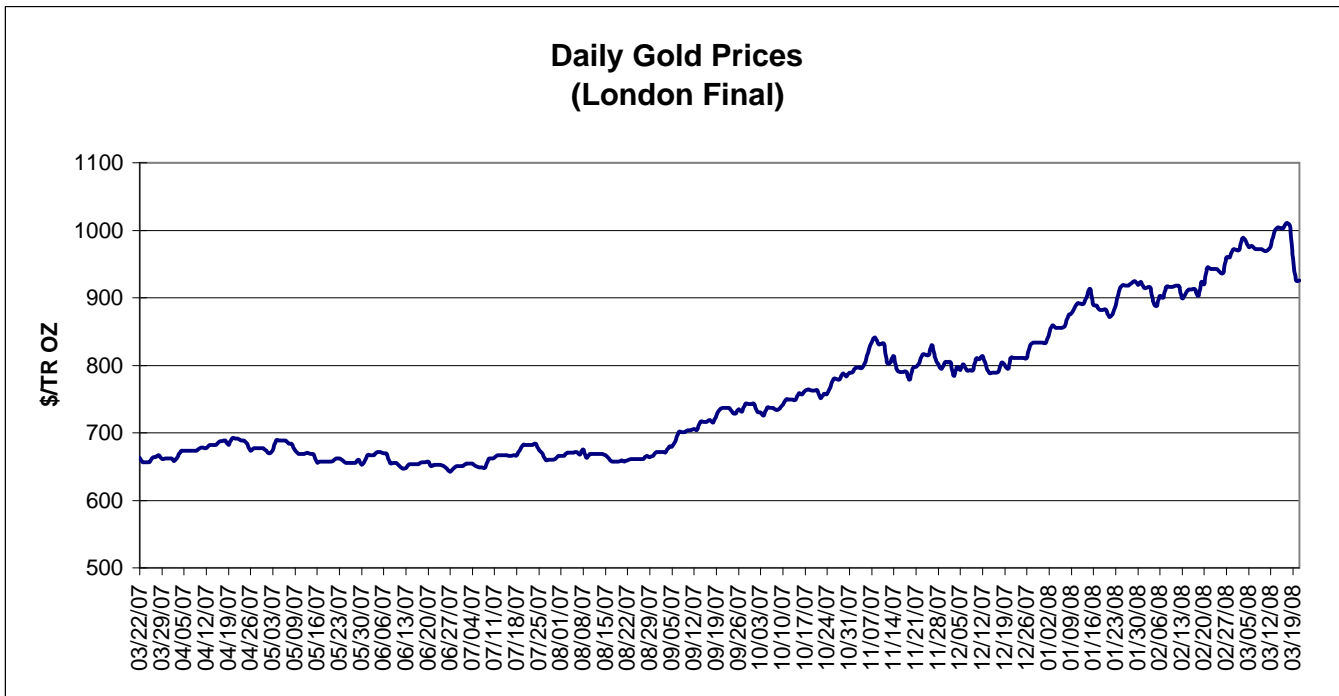
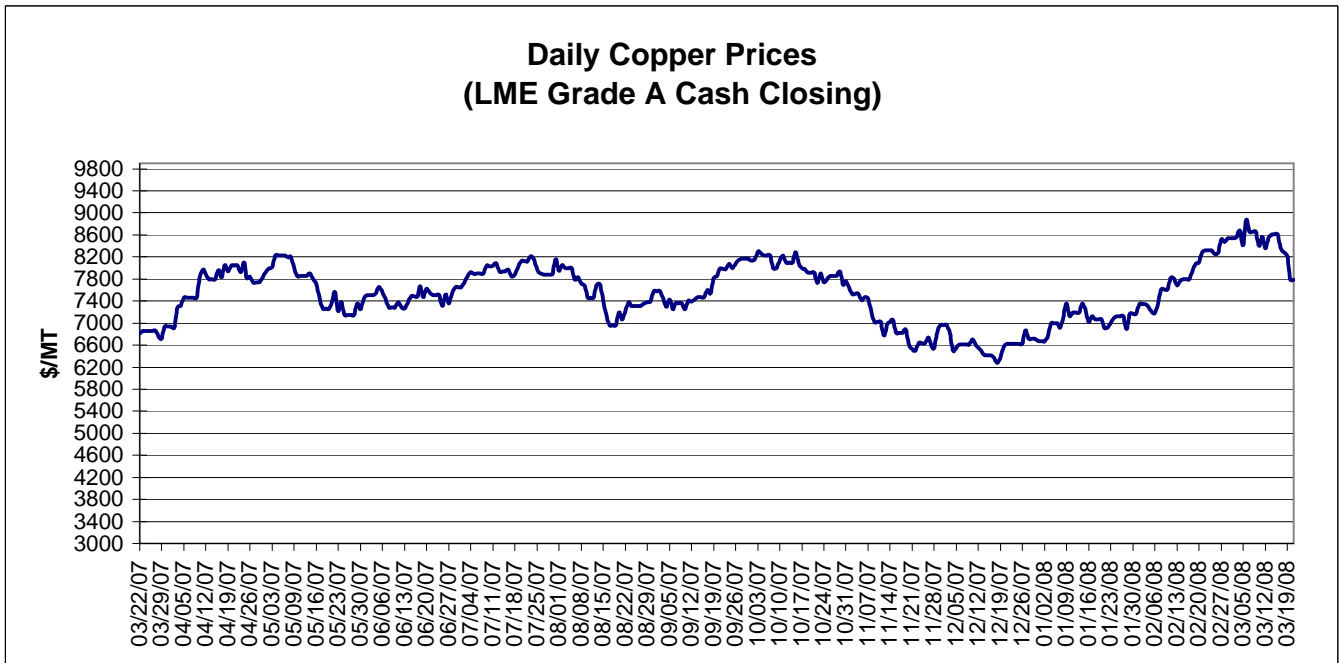


MONTHLY RAW STEEL PRODUCTION



*Steel in the first solid state after melting suitable for further processing or sale, including ingots, steel for castings and strand or pressure cast blooms, slabs, or other product forms.

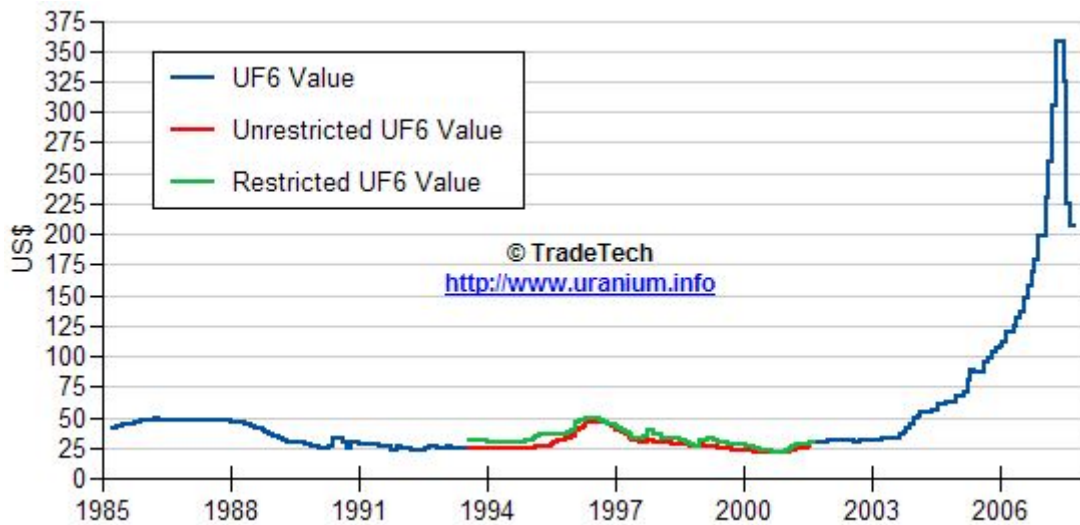
** Based on tonnage capability to produce raw steel for a sustained full order book.



Data reflect closings on weekends and holidays.

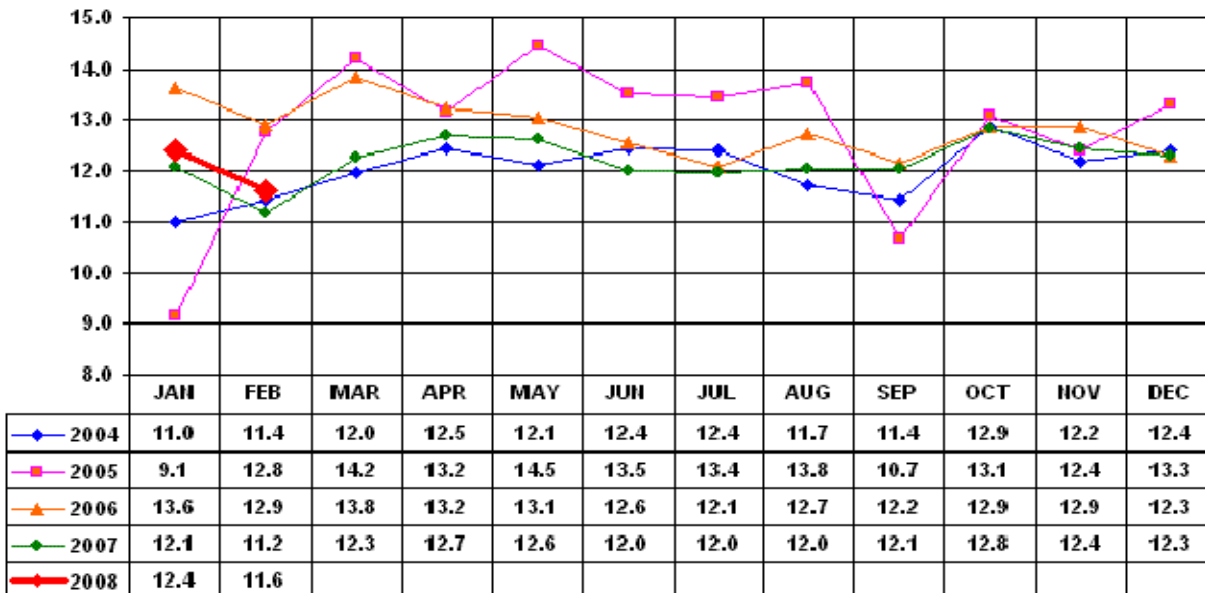
Source: Platts Metals Week

Trade Tech's Uranium (UF6) Monthly Spot Prices (US\$/kg as UF6)



Source: Trade Tech, Uranium Info Website – <http://www.uranium.info>

Coal and Coke Monthly Tonnage Indicator for Internal U.S. Waterways



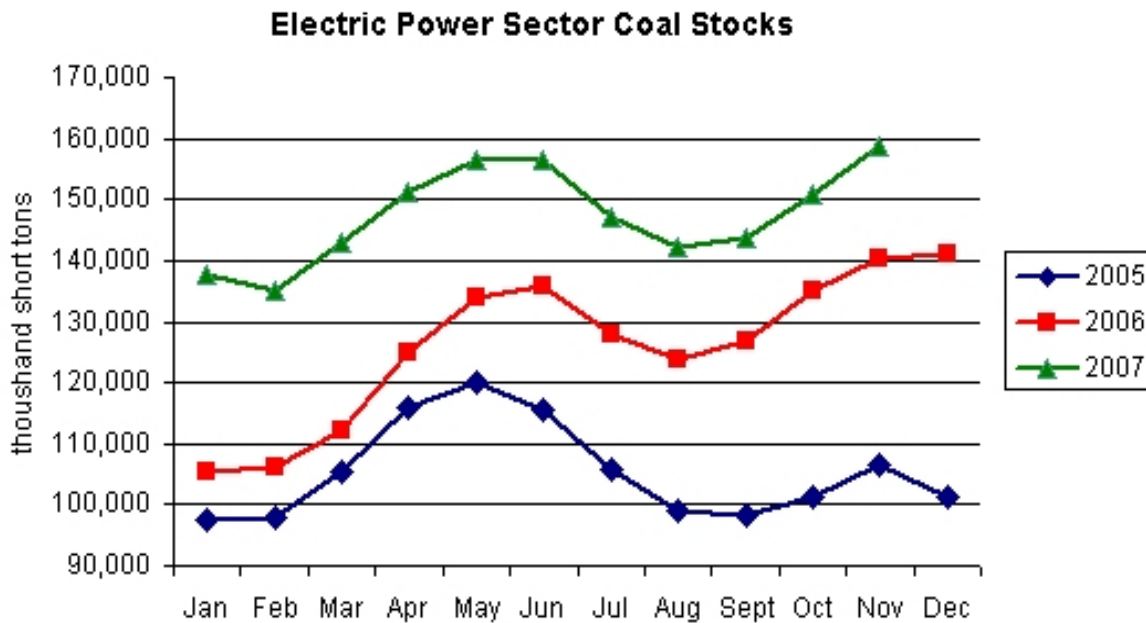
Source: U.S. Army Corps of engineers, Waterborne Commerce Statistics Center

EIA Weekly Spot Coal Prices

The following average spot coal prices appear in the graphic below, for the previous and most recent weeks:
(Dollars per Short Ton)

Week Ended	Central Appalachia 12,500 Btu, 1.2 SO2	Northern Appalachia 13,000 Btu, <3.0 SO2	Illinois Basin 11,800 Btu, 5.0 SO2	Powder River Basin 8,800 Btu, 0.8 SO2	Uinta Basin 11,700 Btu, 0.8 SO2
15-Feb-08	\$66.95	\$70.00	\$46.80	\$13.10	\$33.00
22-Feb-08	\$84.30	\$70.00	\$46.80	\$13.10	\$33.00
29-Feb-08	\$84.30	\$78.00	\$46.80	\$14.05	\$40.00
07-Mar-08	\$84.30	\$80.00	\$46.80	\$14.35	\$40.00
14-Mar-08	\$84.30	\$80.00	\$52.00	\$14.05	\$40.00
20-Mar-08	\$84.35	\$80.00	\$52.00	\$14.20	\$40.00

Source: Energy Information Administration (from Platts *Coal Outlook*, "Weekly Price Survey")



Source: Energy Information Administration