
National Mining Association

Weekly Statistical Summary

March 6, 2009 Edition
(Data for Week Ending February 28, 2009)

Prepared by
National Mining Association



Suite 500 East, 101 Constitution Avenue, NW
Washington, DC, 20001
Phone (202) 463-2600
Visit us at <http://www.nma.org>

NMA Weekly Statistical Summary

Vol. 47, No. 9
Dated 03/06/09

PRODUCTION, CONSUMPTION & TRADE						
	Week Ended			* Cumulative Jan 1 to		
	02/28/09	03/01/08	% Chng	02/28/09	02/28/08	% Chng
EIA Coal Production (000 Tons):						
Week Ended/Year to Date	22,777	22,769	0.0%	186,582	192,173	-2.9%
52 Weeks Ended	1,162,877	1,142,820	1.8%			
Month Ended -- February						
	February 09/08		% Chng	Jan - Feb 09/08		% Chng
	89,614	93,555	-4.2%	186,582	192,173	-2.9%
MONTH ENDED AND CUMULATIVE NUMBERS ARE PRELIMINARY AND SUBJECT TO CHANGE						
DOC Bituminous Coal Trade (000 Tons)						
Exports:	Dec 08/07		% Chng	Jan - Dec 08/07		% Chng
Metallurgical	2,257	2,753	-18.0%	42,620	32,280	32.0%
Steam *	4,317	3,095	39.5%	38,469	26,368	45.9%
Imports:	3,192	2,811	13.6%	34,208	36,347	-5.9%
EI Electric Output (Mil. Kwh)						
	Week Ended			* Cumulative Jan 1 to		
	02/28/09	03/01/08	% Chng	02/28/09	03/01/08	% Chng
EI Electric Output (Mil. Kwh)	73,810	76,644	-3.7%	697,044	715,405	-2.6%
AISI Raw Steel Output (000 Tons)	980	2,186	-55.2%	8,651	18,281	-52.7%
EIA U.S. PETROLEUM DATA						
4-Week Averages 000 Barrels per Day						
PETROLEUM SUPPLY:						
	Week Ending			Cumulative Daily Averages		
	02/27/09	02/27/08	% Chng	2008	2007	% Chng
Domestic Crude	5,331	5,112	4.3			
Net Imports (Incl. SPR)	9,032	9,615	-6.1			
SPR Stocks W/D or Added	-50	-18	--			
Other Stocks W/D or added	-162	-187	--			
Natural Gas Liquids Prod.	2,173	2,201	-1.3			

Cumulative daily petroleum averages will be shown beginning with week ending April 3, 2009 data. * Excludes lignite & anthracite



NMA

THE AMERICAN RESOURCE National Mining Association Web Site: [http:// www.nma.org](http://www.nma.org)

EIA Estimated Weekly U.S. Coal Production Overview (Thousand Short Tons)

Coal-Producing Region and State	Week Ended			Year to Date			52 Weeks Ended		
	2/28/2009	2/21/2009	3/1/2008	2/28/2009	2/28/2008	Percent Change	2/28/2009	3/1/2008	Percent Change
Alabama	426	427	452	3,450	3,784	-8.8	20,445	19,734	3.6
Alaska	26	26	31	207	255	-18.8	1,323	1,265	4.5
Arizona	173	173	150	1,390	1,282	8.4	8,139	7,861	3.5
Arkansas	1	1	1	9	10	-6.4	58	81	-27.9
Colorado	696	697	658	5,654	5,438	4.0	33,874	36,417	-7.0
Illinois	611	613	622	4,926	5,164	-4.6	31,704	31,339	1.2
Indiana	728	729	697	5,897	5,832	1.1	36,113	34,849	3.6
Kansas	5	5	6	43	53	-17.8	278	399	-30.5
Kentucky Total	2,224	2,229	2,394	17,936	20,032	-10.5	116,834	115,008	1.6
Eastern	1,666	1,670	1,806	13,425	15,145	-11.4	87,802	87,014	0.9
Western	558	559	587	4,511	4,887	-7.7	29,032	27,994	3.7
Louisiana	89	65	99	701	702	-0.2	3,942	3,200	23.2
Maryland	50	50	41	401	348	15.5	2,618	2,237	17.1
Mississippi	81	84	62	558	511	9.2	2,792	3,481	-19.8
Missouri	6	6	4	48	35	36.6	265	231	15.0
Montana	882	883	902	7,177	7,456	-3.7	43,891	44,060	-0.4
New Mexico	591	593	368	4,797	3,090	55.3	29,279	23,760	23.2
North Dakota	573	574	561	4,646	4,730	-1.8	29,552	28,997	1.9
Ohio	485	486	486	3,934	4,060	-3.1	25,363	22,786	11.3
Oklahoma	34	34	31	272	264	3.1	1,482	1,625	-8.8
Pennsylvania Total	1,292	1,295	1,372	10,433	11,471	-9.1	63,456	64,609	-1.8
Anthracite	22	22	31	180	257	-30.2	1,447	1,547	-6.5
Bituminous	1,270	1,273	1,341	10,253	11,214	-8.6	62,009	63,062	-1.7
Tennessee	49	50	50	397	424	-6.4	2,424	2,587	-6.3
Texas	797	799	742	6,484	6,131	5.8	38,730	41,399	-6.4
Utah	464	465	525	3,733	4,384	-14.9	23,155	24,504	-5.5
Virginia	499	500	453	4,038	3,777	6.9	25,065	24,245	3.4
West Virginia Total	3,104	3,111	3,162	25,107	26,408	-4.9	157,972	152,494	3.6
Northern	836	838	825	6,718	6,846	-1.9	40,582	41,017	-1.1
Southern	2,268	2,273	2,337	18,389	19,562	-6.0	117,390	111,478	5.3
Wyoming	8,891	8,916	8,900	74,345	76,535	-2.9	464,124	455,651	1.9
Appalachian Total	7,572	7,589	7,822	61,184	65,417	-6.5	385,145	375,707	2.5
Interior Total	2,909	2,895	2,852	23,450	23,587	-0.6	144,395	144,599	-0.1
Western Total	12,295	12,327	12,095	101,948	103,169	-1.2	633,337	622,515	1.7
East of Miss. River	9,550	9,574	9,790	77,076	81,810	-5.8	484,786	473,370	2.4
West of Miss. River	13,227	13,237	12,979	109,505	110,363	-0.8	678,092	669,450	1.3
Bituminous and Lignite	22,754	22,789	22,738	186,402	191,916	-2.9	1,161,430	1,141,273	1.8
Anthracite	22	22	31	180	257	-30.2	1,447	1,547	-6.5
U.S. Total	22,777	22,811	22,769	186,582	192,173	-2.9	1,162,877	1,142,820	1.8
Railroad Cars Loaded	146,888	146,519	150,722	1,269,863	1,301,716	-2.4	7,620,716	7,447,883	2.3

Source: Energy Information Administration

EIA Estimated Monthly U.S. Coal Production Overview (Thousand Short Tons)

Coal-Producing Region and State	Week Ended		Year to Date		Month Ended		January - February		Percent Change
	2/28/2009	3/1/2008	2/28/2009	2/28/2008	February 2009	February 2008	2009	2008	
Alabama	426	452	3,450	3,784	1,663	1,847	3,450	3,784	-8.8
Alaska	26	31	207	255	101	125	207	255	-18.8
Arizona	173	150	1,390	1,282	673	616	1,390	1,282	8.4
Arkansas	1	1	9	10	4	5	9	10	-6.4
Colorado	696	658	5,654	5,438	2,714	2,663	5,654	5,438	4.0
Illinois	611	622	4,926	5,164	2,384	2,533	4,926	5,164	-4.6
Indiana	728	697	5,897	5,832	2,838	2,842	5,897	5,832	1.1
Kansas	5	6	43	53	21	26	43	53	-17.8
Kentucky Total	2,224	2,394	17,936	20,032	8,672	9,770	17,936	20,032	-10.5
Eastern	1,666	1,806	13,425	15,145	6,498	7,379	13,425	15,145	-11.4
Western	558	587	4,511	4,887	2,174	2,391	4,511	4,887	-7.7
Louisiana	89	99	701	702	306	346	701	702	-0.2
Maryland	50	41	401	348	194	169	401	348	15.5
Mississippi	81	62	558	511	277	227	558	511	9.2
Missouri	6	4	48	35	23	17	48	35	36.6
Montana	882	902	7,177	7,456	3,438	3,644	7,177	7,456	-3.7
New Mexico	591	368	4,797	3,090	2,306	1,502	4,797	3,090	55.3
North Dakota	573	561	4,646	4,730	2,233	2,297	4,646	4,730	-1.8
Ohio	485	486	3,934	4,060	1,891	1,980	3,934	4,060	-3.1
Oklahoma	34	31	272	264	131	128	272	264	3.1
Pennsylvania Total	1,292	1,372	10,433	11,471	5,039	5,603	10,433	11,471	-9.1
Anthracite	22	31	180	257	87	126	180	257	-30.2
Bituminous	1,270	1,341	10,253	11,214	4,952	5,477	10,253	11,214	-8.6
Tennessee	49	50	397	424	193	207	397	424	-6.4
Texas	797	742	6,484	6,131	3,108	2,997	6,484	6,131	5.8
Utah	464	525	3,733	4,384	1,809	2,143	3,733	4,384	-14.9
Virginia	499	453	4,038	3,777	1,945	1,847	4,038	3,777	6.9
West Virginia Total	3,104	3,162	25,107	26,408	12,106	12,892	25,107	26,408	-4.9
Northern	836	825	6,718	6,846	3,262	3,365	6,718	6,846	-1.9
Southern	2,268	2,337	18,389	19,562	8,844	9,527	18,389	19,562	-6.0
Wyoming	8,891	8,900	74,345	76,535	35,545	37,130	74,345	76,535	-2.9
Appalachian Total	7,572	7,822	61,184	65,417	29,529	31,924	61,184	65,417	-6.5
Interior Total	2,909	2,852	23,450	23,587	11,266	11,512	23,450	23,587	-0.6
Western Total	12,295	12,095	101,948	103,169	48,819	50,119	101,948	103,169	-1.2
East of Miss. River	9,550	9,790	77,076	81,810	37,202	39,917	77,076	81,810	-5.8
West of Miss. River	13,227	12,979	109,505	110,363	52,412	53,638	109,505	110,363	-0.8
Bituminous and Lignite	22,754	22,738	186,402	191,916	89,527	93,428	186,402	191,916	-2.9
Anthracite	22	31	180	257	87	126	180	257	-30.2
U.S. Total	22,777	22,769	186,582	192,173	89,614	93,555	186,582	192,173	-2.9
Railroad Cars Loaded	146,888	150,722	1,269,863	1,301,716	--	--	--	--	--

Source: Energy Information Administration



Volume 77 No. 9

OUTPUT FOR WEEK ENDED - Feb 28, 2009

Mar 04, 2009

The net available amount of electric energy distributed by the Total Electric Utility Industry+ for the week ended Saturday, Feb 28, 2009 was 73,810 gigawatthours (GWh), according to the Edison Electric Institute. This is equivalent to 182 on the weekly electric output index.

WEEKLY ELECTRIC OUTPUT BY GEOGRAPHIC DIVISION
(48 CONTIGUOUS STATES)

	Week Ended February 28		52 Weeks Ended February 28	
	GWh Output	% Increase Over Corresponding Week of 2008	GWh Output	% Increase Over Corresponding Period of 2008
New England	2,488	-5.5	130,620	-2.5
Mid-Atlantic	8,628	1.4	452,364	-1.1
Central Industrial	13,837	-6.2	703,936	-2.6
West Central	6,562	-3.2	343,162	-3.0
Southeast	19,697	-7.0	1,085,376	-2.0
South Central	9,835	-2.2	596,114	0.0
Rocky Mountain	4,208	0.9	275,126	-1.5
Pacific Northwest	3,460	3.0	166,854	2.9
Pacific Southwest	5,095	-1.9	290,803	0.3
Total United States	73,810	-3.7	4,044,355	-1.4

WEEKLY ELECTRIC OUTPUT IN PREVIOUS WEEKS--GWh

Week Ended	2009	Week Ended	2008	% Inc. (09/08)	52 Weeks Ended	2009	% Inc. (09/08)
Feb 07	79,889	Feb 09	76,941	3.8	Feb 07	4,058,172	-1.1
Feb 14	71,694	Feb 16	79,368	-9.7	Feb 14	4,050,498	-1.2
Feb 21	75,058	Feb 23	78,367	-4.2	Feb 21	4,047,189	-1.3
Feb 28	73,810	Mar 01	76,644	-3.7	Feb 28	4,044,355	-1.4
Feb 28	697,044	Mar 01	715,405	-2.6	YEAR TO DATE, FIRST 9 WEEKS		

WEEKLY ELECTRIC OUTPUT INDEX--TOTAL U.S.*
SEASONALLY ADJUSTED 1982 = 100

Week Ended	2009	Week Ended	2008	Week Ended	2007
Feb 07	181	Feb 09	180	Feb 10	195
Feb 14	163	Feb 16	186	Feb 17	194
Feb 21	175	Feb 23	188	Feb 24	185
Feb 28	182	Mar 01	187	Mar 03	179

* Excludes Alaska and Hawaii.

+ Includes investor-owned companies, cooperatives and government-owned utilities.

Copyright © 2009 Edison Electric Institute. All rights reserved.

WEEKLY ELECTRIC OUTPUT BY GEOGRAPHIC DIVISION (48 CONTIGUOUS STATES)

	Week Ended			NMA CUMULATIVE JANUARY WEEK ONE TO			52 Weeks Ended		
	28-Feb 2009 GWh Output	1-Mar 2008 GWh Output	% Increase Over Corresponding Week of 2008	28-Feb 2009 GWh Output	1-Mar 2008 GWh Output	% Increase Over Corresponding Week of 2008	28-Feb 2009 GWh Output	1-Mar 2008 GWh Output	% Increase Over Corresponding Week of 2008
New England	2,488	2,633	-5.5%	23,497	23,669	-0.7%	130,620	133,901	-2.5%
Mid-Atlantic	8,628	8,505	1.4%	80,417	79,092	1.7%	452,364	457,361	-1.1%
Central Industrial	13,837	14,758	-6.2%	127,933	132,538	-3.5%	703,936	722,791	-2.6%
West Central	6,562	6,782	-3.2%	60,469	62,745	-3.6%	343,162	353,677	-3.0%
Southeast	19,697	21,190	-7.0%	187,674	192,551	-2.5%	1,085,376	1,107,519	-2.0%
South Central	9,835	10,053	-2.2%	92,187	97,158	-5.1%	596,114	596,264	0.0%
Rocky Mountain	4,208	4,172	0.9%	43,862	45,223	-3.0%	275,126	279,387	-1.5%
Pacific Northwest	3,460	3,359	3.0%	34,219	35,040	-2.3%	166,854	162,096	2.9%
Pacific Southwest	5,095	5,192	-1.9%	46,786	47,389	-1.3%	290,803	289,852	0.3%
Total United States *	73,810	76,644	-3.7%	697,044	715,405	-2.6%	4,044,355	4,102,848	-1.4%

Notes: EEI output data are an estimate of electricity load made available for distribution derived as weekly net generation + purchases from non-utilities + net imports - exports - sales for resale. It is not meant to be a measure of electricity generation for the U.S. EEI survey data represent the majority of national distribution (large utilities, large government power projects, some independent and large municipal power projects). The remaining segment of the industry (smaller producers) is estimated. Non-utility generation is captured via direct sales to utilities.

* Excludes Alaska and Hawaii

SOURCE: Edison Electric Institute (EEI), *Weekly Electric Output Report*.

AMERICAN IRON AND STEEL INSTITUTE
 1140 Connecticut Avenue, Suite 705
 Washington, D.C. 20036

March 2, 2009

ESTIMATED WEEKLY RAW STEEL * PRODUCTION

Period	Thousand Net Tons	Percent Change from Previous Period	Percent Capability Utilization**	Production by District		
				Week Ending Feb. 28	Week Ending Feb. 21	
<u>Week Ending</u>				North East Coast	70	88
				Pgh/Youngstown	91	78
				Lake Erie	9	14
February 28, 2009	980	-1.8	41.1	Detroit	38	23
February 28, 2008	2,186	-55.2	91.6	Indiana/Chicago	298	309
February 21, 2009	998	-7.9	41.8	Midwest	100	99
				Southern	322	350
				Western	52	37
				Total	980	998
<u>Year-to-Date+</u>						
February 28, 2009	8,651	-52.7	43.4			
February 28, 2008	18,281	-	90.9			

*Raw steel production tonnage included in this report is estimated based on a sampling of steel producers. Therefore, this report should be used primarily to assess production trends. The AISI production report "AIS 7," produced monthly and available by subscription, provides a more accurate summary of steel production based on data supplied by companies representing approximately 75% of U.S. production capacity.

+ Includes revisions for previous months

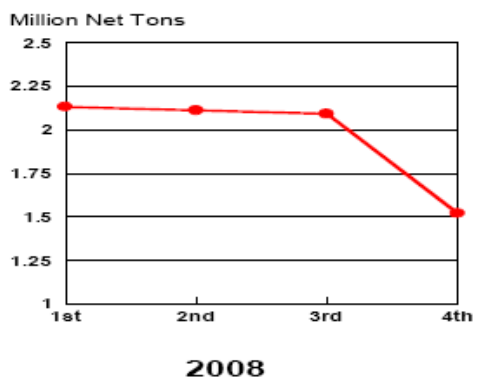
NOTE: Capability for the Third Quarter 2008 is approximately 31.4 million net tons vs 31.3 million net tons for the same period last year, and 31.4 million tons for the Third quarter of 2008.

Capability -	2004 approx.	2.2 million tons/week
	2005	2.3
	2006	2.4
	2007	2.4
	2008	2.4

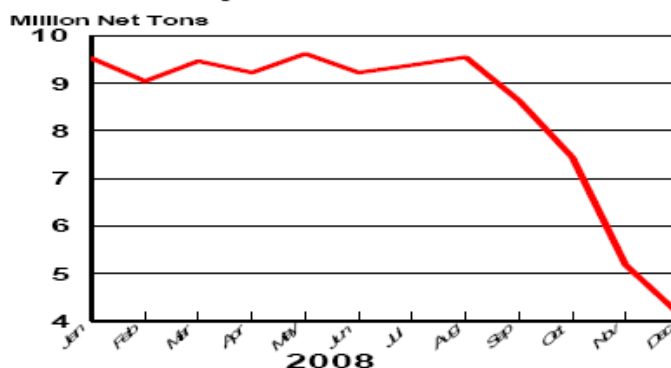
*Steel in the first solid state after melting suitable for further processing or sale, including ingots, steel for castings and strand or pressure cast blooms, slabs, or other product forms.

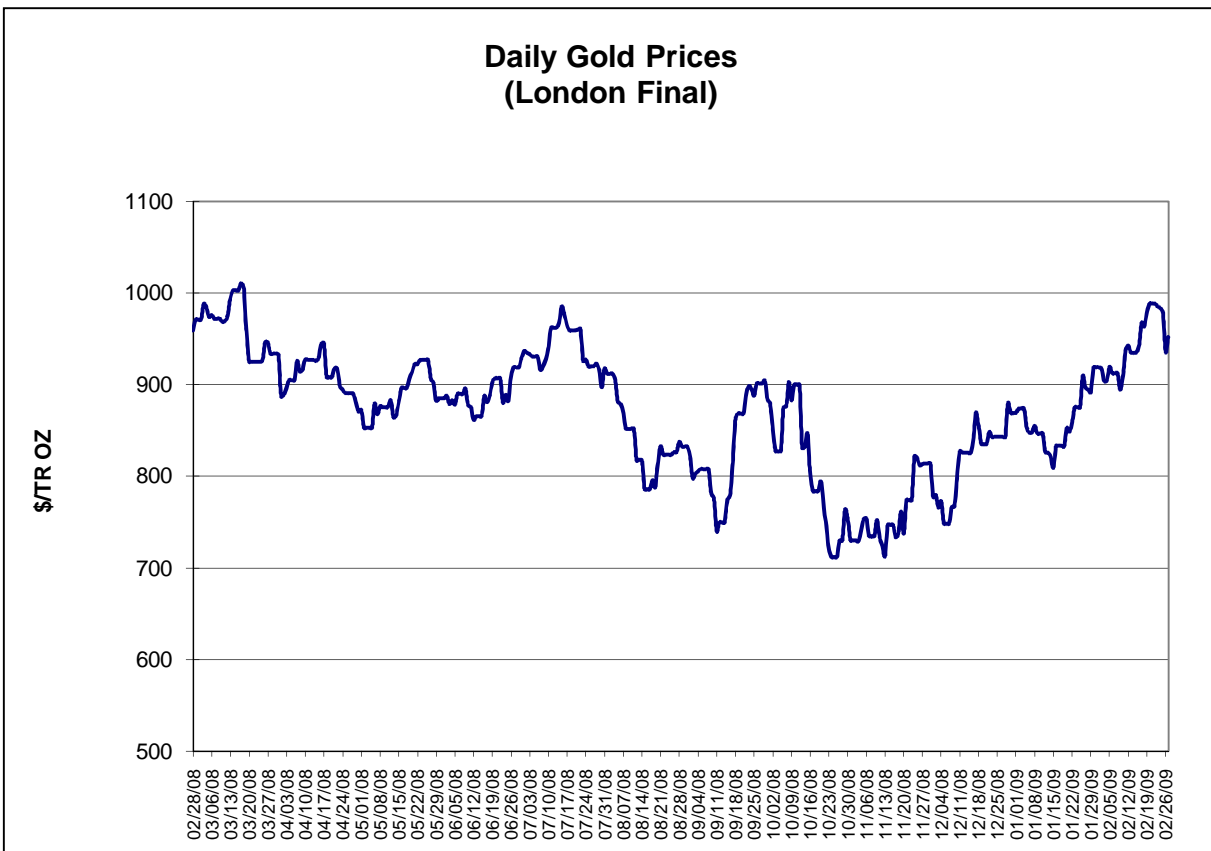
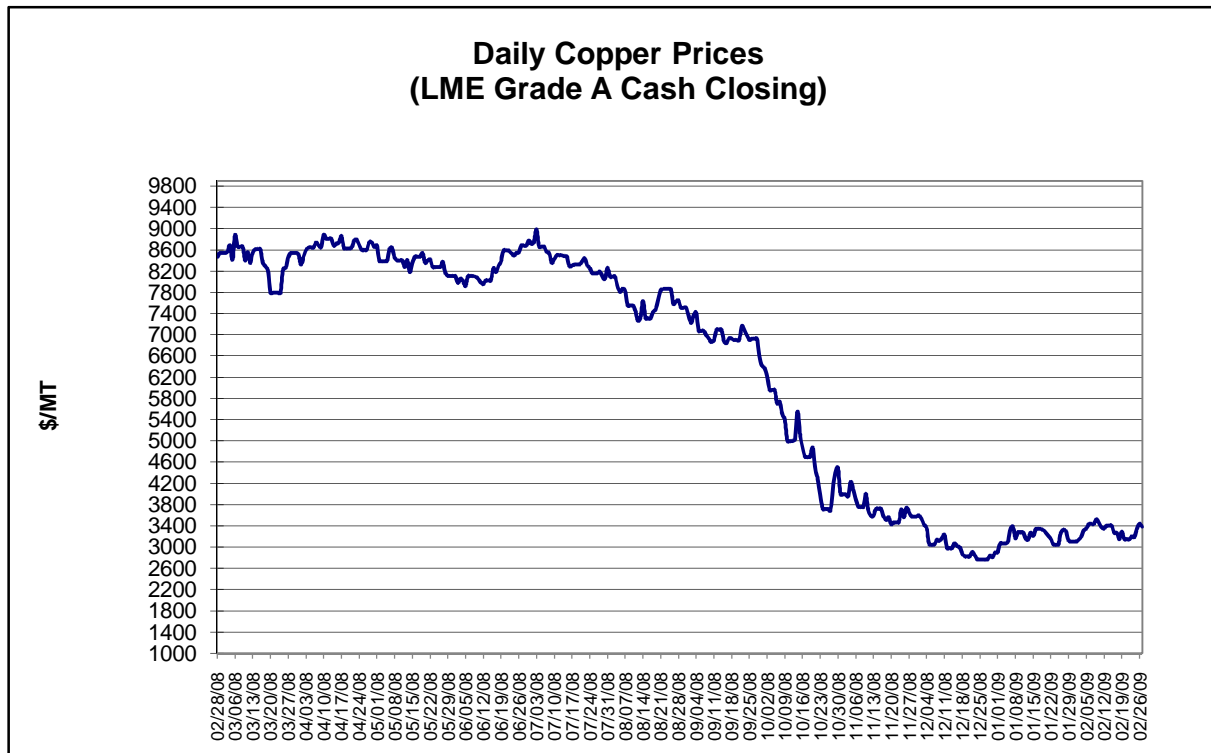
** Based on tonnage capability to produce raw steel for a sustained full order book.

Average Weekly Raw Steel Production



Monthly Raw Steel Production

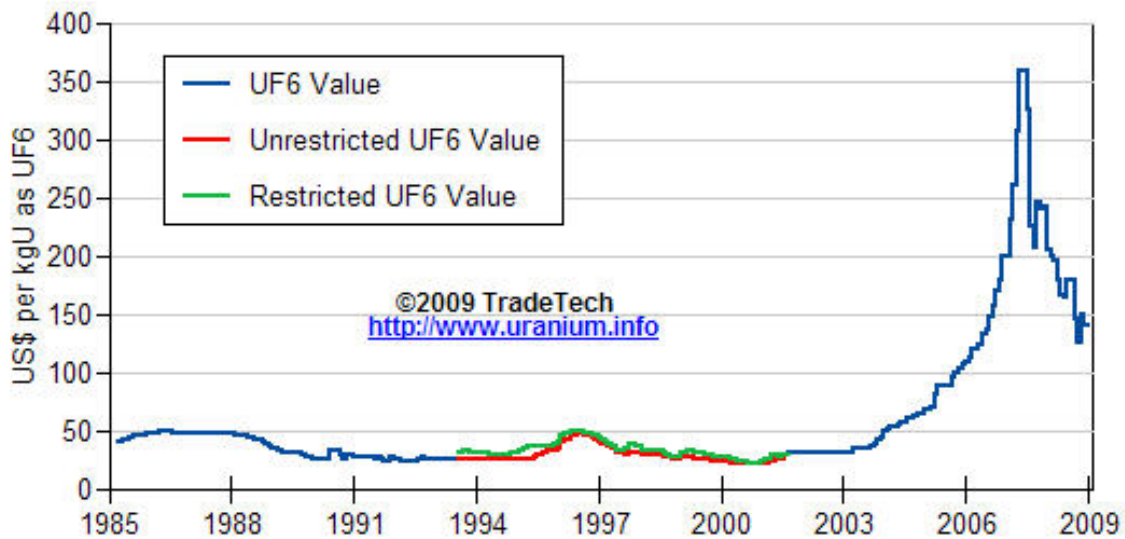




Data reflect closings on weekends and holidays.

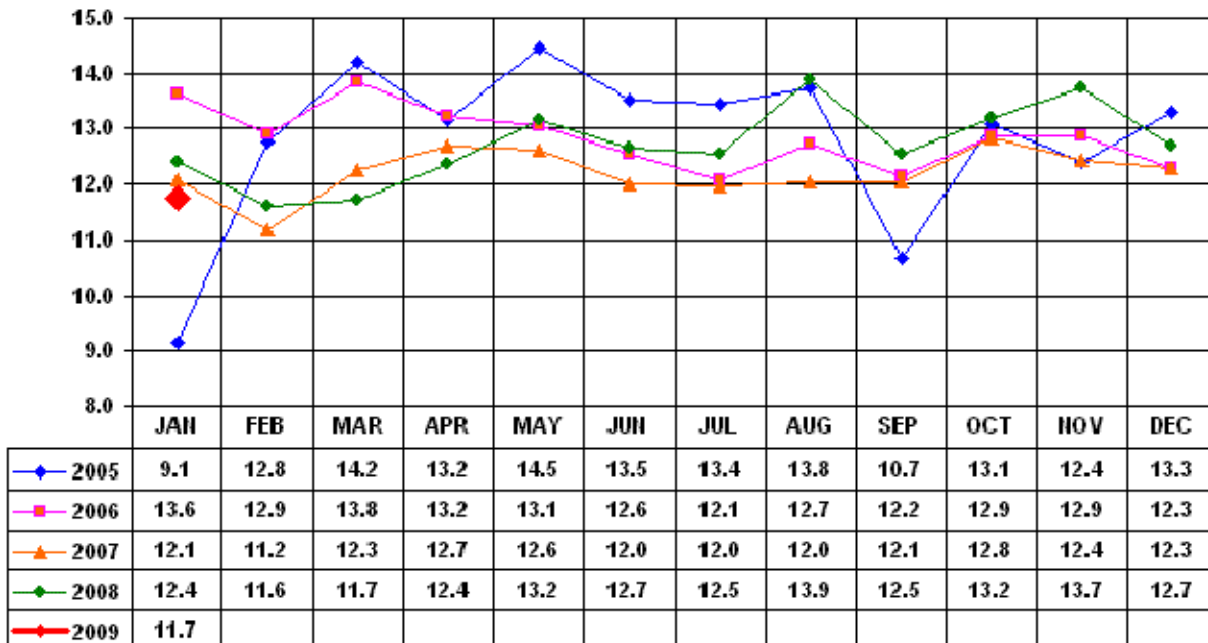
Source: Platts Metals Week

Trade Tech's Uranium (UF6) Monthly Spot Prices (US\$/kg as UF6)



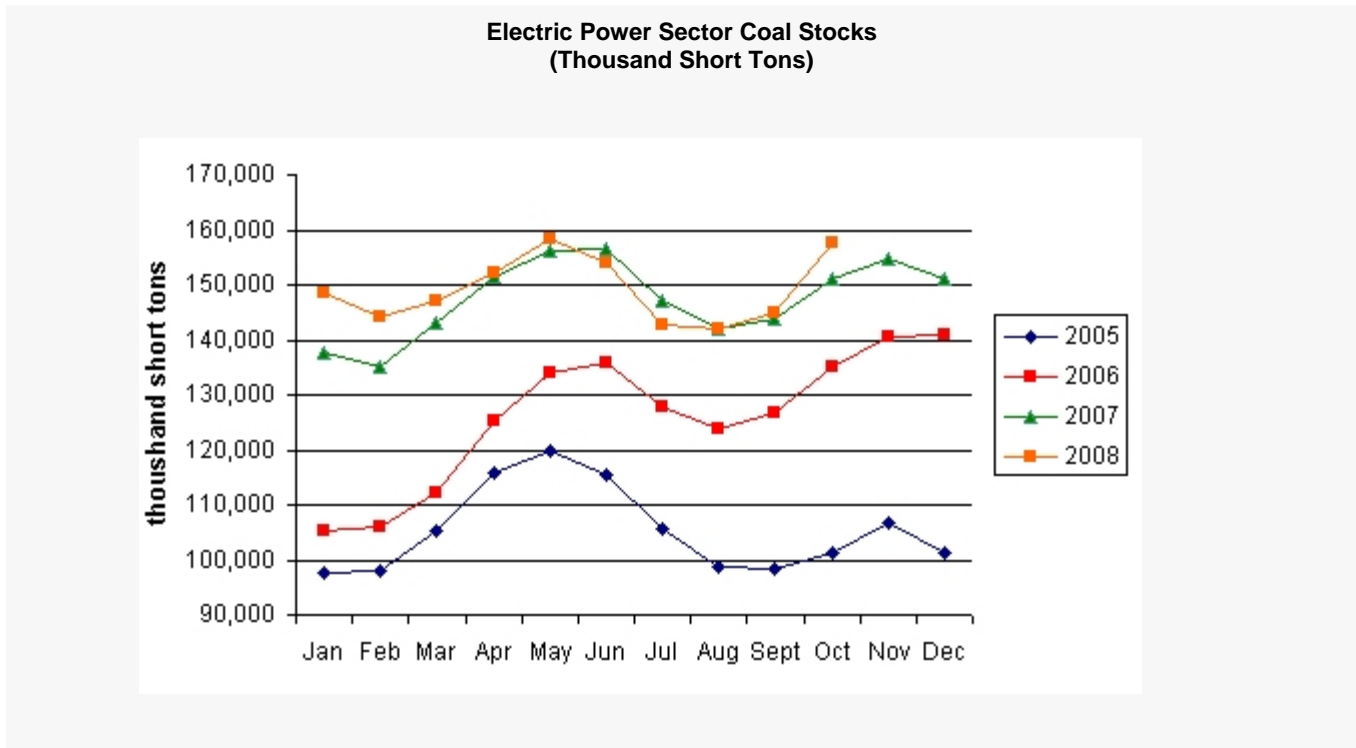
Source: Trade Tech, Uranium Info Website – <http://www.uranium.info>

Coal and Coke Monthly Tonnage Indicator for Internal U.S. Waterways



Source: U.S. Army Corps of Engineers, Waterborne Commerce Statistics Center

Average Weekly Coal Commodity Spot Prices (Dollars per Short Ton)					
Week Ended	Central Appalachia 12,500 Btu, 1.2 SO ₂	Northern Appalachia 13,000 Btu, <3.0 SO ₂	Illinois Basin 11,800 Btu, 5.0 SO ₂	Powder River Basin 8,800 Btu, 0.8 SO ₂	Uinta Basin 11,700 Btu, 0.8 SO ₂
1/16/09	\$66.45	\$76.00	\$60.00	\$13.00	\$73.00
1/23/09	\$66.45	\$69.00	\$60.00	\$13.00	\$73.00
1/30/09	\$66.45	\$69.00	\$55.00	\$13.00	\$73.00
2/06/09	\$66.45	\$66.00	\$55.00	\$13.00	\$73.00
2/13/09	\$68.20	\$66.00	\$55.00	\$13.00	\$73.00
2/20/09	\$68.20	\$66.00	\$55.00	\$13.00	\$73.00
2/27/09	\$68.20	\$66.00	\$55.00	\$13.00	\$73.00



Source: Energy Information Administration, *Coal News and Markets Report*

USGS Production of Selected Mineral Commodities	2008 Year to Date - 4th Quarter	2007 Year to Date - 4th Quarter	Percent Change
Aluminum, secondary (000 Mt.)	981.0	924.0	6%
Cement (Mil. Mt.)	84.9	92.3	-8%
Gypsum (Mil. Mt.)	18.1	21.4	-15%
Iron Ore (Mil. Mt.)	53.0	52.0	2%
Phosphate rock (Mil. Mt.)	30.0	29.7	1%
Sand & gravel, construction (Mil. Mt.)	1,040.0	1,230.0	-15%
Soda ash (Mil. Mt.)	11.3	11.1	2%
Stone, crushed (Mil. Mt.)	1,340.0	1,600.0	-16%
Zinc (000 Mt.)	842.0	769.0	9%

Source: U.S. Geological Survey, Mineral Industry Surveys, *U.S. Production of Selected Mineral Commodities in the Fourth Quarter 2008, February 2008*